

j5create JUA210 USB Display Adaptor Instruction Manual



Do **NOT** plug the j5create USB display adapter into the computer until the driver is completely installed.

Contents

1 USB Display Adapter

1.1 JUA210/JUA230/JUA250

1.1.1 Quick Installation Guide

1.1.2 TECHNICAL SUPPORT

1.1.3 ■ Windows Driver

Installation

1.1.4 ■ Mac Driver Installation

1.1.5 ■ System Requirements

1.1.6 ■ Limited Warranty

2 Documents / Resources

2.1 References

3 Related Posts

USB Display Adapter

JUA210/JUA230/JUA250



STOP!

If you have any problems with this product please contact our technical support team before returning it to the store.

TECHNICAL SUPPORT

Customer Service: **888-988-0488**

Technical Support: **888-689-4088**

Email: service@j5create.com

Live Chat: www.j5create.com/livechat

Support Ticket: tickets.j5create.com



Do **NOT** plug the j5create USB display adapter into the computer until the driver is completely installed.

- Thank you for purchasing the **j5create USB display adapter!** This adapter acts as an external graphics card for your MAC or PC. It allows you to add an additional display through your USB port.

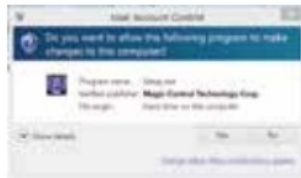
■ Windows Driver Installation

- Driver will automatically install on Win 10 / 8.1 / 8 / 7 (Requires Internet access)

Step 1



Step 2



Step 3



Step 1.

If you have internet access it is **highly recommended** that you download the **latest driver** from www.j5create.com under **Support & Services** —scroll down to the product's driver you are installing and download the latest driver for your operating system. (Note: If possible run as an administrator)

If you do not have internet access insert the Driver CD into your computer's CD-ROM drive. (The setup program should launch automatically) If not, go to **my computer** and click on your optical drive and manually run the setup CD by double-clicking on **Setup.exe**. (the prompt may take a minute to appear).

Step 2.

Follow the prompts to install the driver. (You may have to click on **My Computer > downloads** and choose **j5UsbDisplayAdapter** to begin installation) .

Step 3.

Once the driver has been installed choose **Yes** and click **Finish** to restart your computer and complete driver installation. Once your computer has **restarted**, connect the j5create USB Display Adapter to your display first and **then to your computer**. Now you are ready to use your j5create USB Display Adapter!

(*****Note for XP:** Once you have connected your j5create USB Display Adapter to your display and your computer,

you will then need to **restart** your computer. Once your computer has restarted you will be ready to use your j5create USB Display Adapter.)

Step 4. Display Settings

“Windows: Right click on the icon  on the lower right-hand side of the toolbar to open display settings. If your driver automatically installed, you will see a different icon 

■ Mac Driver Installation

Step 1



Step 2



Step 3



Step 1.

If you have internet access it is **highly recommended** that you download the **latest driver** from www.j5create.com under **Support & Services** —scroll down to the product’s driver you are installing and download the latest driver for your operating system. (Note: If you have trouble downloading this driver your security settings may need to be adjusted to allow for “downloading from anywhere”)

If you do not have internet access insert the Driver CD into your computer’s CD-ROM drive. Click on **Finder**, under **Devices** choose **j5create**. Click on the **mac-install** folder and open the **dmg** file.


Step 2.

Choose the correct operating system for your system and follow the prompts to install the driver. (You may have to click on **Finder > downloads** and choose **j5UsbDisplayAdapter** to begin installation).

Step 3.

Once initial installation has completed, click **Restart** to finish installing the software. After your computer has restarted, connect the j5create USB Display Adapter to your **display first** and **then to your computer**. Now you are ready to use your j5create USB Display Adapter!

Step 4. Display Settings

Go to () and then **System Preferences**. Choose the **Display** or **Arrangement** tab to adjust.

■ System Requirements

- Microsoft Windows 10 / 8.1 / 8 / 7 / XP (32-bit or 64-bit)
- Mac OS X 10.6 – 10.11 Compatible
- Available USB 2.0 port
- Minimum System Requirements
CPU : Intel 2 Dual Core 1.8 GHz / RAM : 2 GB
 - * Windows XP user: “Windows Media Player” is recommended
 - * Windows XP & MAC USB 2.0 for “office applications only” is recommended.
- Driver will automatically install on Win 10 / 8.1 / 8 / 7 (Requires Internet access)

■ Limited Warranty

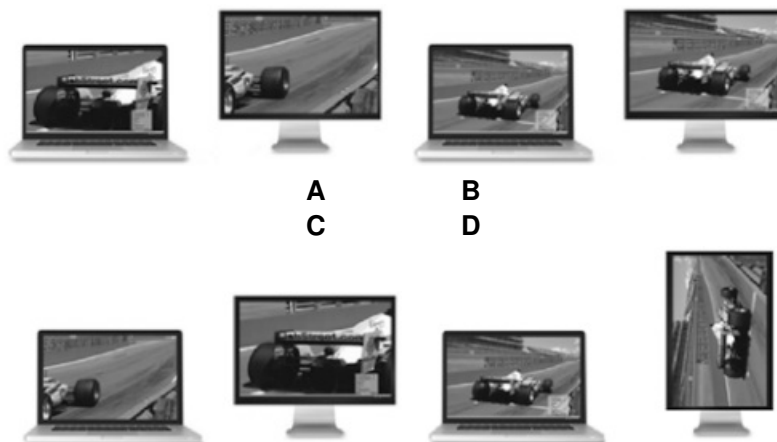
j5create offers a limited 1-year warranty. User's wear & tear damage is not included.

The user shall call or email j5create customer service with the defect information of the product and obtain a return authorization number. Users are responsible for one way return freight cost and we will take care of one way freight back. In order to obtain a return authorization number, users should have the following information handy when calling or emailing the service team:

- (i) a copy of the original purchase invoice to verify your warranty
- (ii) a product serial number
- (iii) a description of the problem
- (iv) customer's name, address, and telephone number

j5create does not warrant that the operation of the product will be uninterrupted or error-free. j5create is not responsible for damage arising from failure to follow instructions relating to the product's use. This warranty does not apply to: (a) consumable parts, unless damage has occurred due to a defect in materials or workmanship; (b) cosmetic damage, including but not limited to scratches, dents, and broken plastic on ports; (c) damage caused by use with non-j5create products; (d) damage caused by natural disasters (flood, fire, earthquake, lightning strike, typhoon etc.); (e) damage caused by human misuse (lost, accident, abuse, misuse or other external causes); (f) damage caused by operating the product outside the permitted or intended uses described by j5create; (g) damage caused by service (including upgrades and expansions) performed by anyone who is not a representative of j5create or a j5create Authorized Service Provider; (h) a product or part that has been modified to alter functionality or capability without the written permission of j5create; or (i) if any j5create serial number on the product has been removed or defaced. If such a situation occurs, j5create will calculate the cost of materials and repair for your reference. This warranty is given by j5create in lieu of any other warranties expressed or implied.

Copyright© 2016 j5create. All rights reserved. All trade names are registered trademarks of their respective owners. Features and specifications are subject to change without notice. Product may not be exactly as shown in the diagrams.



- A : Extended Mode
- B: Mirror Mode
- C : Primary Mode
- D: Display Rotation
- * Not Supported on Mac



[j5create JUA210 USB Display Adaptor](#) [pdf] Instruction Manual
JUA210 USB Display Adaptor, JUA210, USB Display Adaptor, Display Adaptor, Adaptor

References

- [User Manual](#)

Manuals+. Privacy Policy

This website is an independent publication and is neither affiliated with nor endorsed by any of the trademark owners. The "Bluetooth®" word mark and logos are registered trademarks owned by Bluetooth SIG, Inc. The "Wi-Fi®" word mark and logos are registered trademarks owned by the Wi-Fi Alliance. Any use of these marks on this website does not imply any affiliation with or endorsement.