

j5create JUA210 USB Display Adapter Instruction Manual



Contents

- 1 USB DISPLAY ADAPTER**
 - 1.1 QUICK INSTALLATION GUIDE**
 - 1.1.1 GETTING STARTED – Windows**
 - 1.1.2 Installation – MAC**
 - 1.1.2.1 DEVICE HARDWARE INSTALLATION**
 - 1.1.2.2 Required Environment**
 - 1.1.3 TECHNICAL SUPPORT**
- 2 Documents / Resources**
 - 2.1 References**
- 3 Related Posts**

USB DISPLAY ADAPTER

QUICK INSTALLATION GUIDE

JUA210/JUA230/JUA250



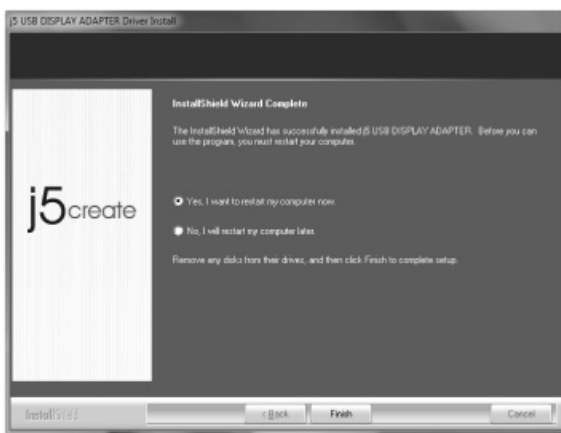
GETTING STARTED – Windows

1. Insert the Driver CD into the drive; the setup program should launch automatically.
 - Make sure that the USB Display Adapter is NOT connected to your host computer.

* Driver download is available at www.j5create.com in "support>download" area.



2. Executing the Setup.exe application will launch the following screen. Click "Next" to continue.



3. When the installation is complete, select "Yes, I want to restart my computer now" and click "Finish" to restart.



Installation – MAC

1. Insert the Driver CD into the CD-ROM drive and the installation page will be launched.

- Make sure that the USB Display Adapter is NOT connected to your host computer.

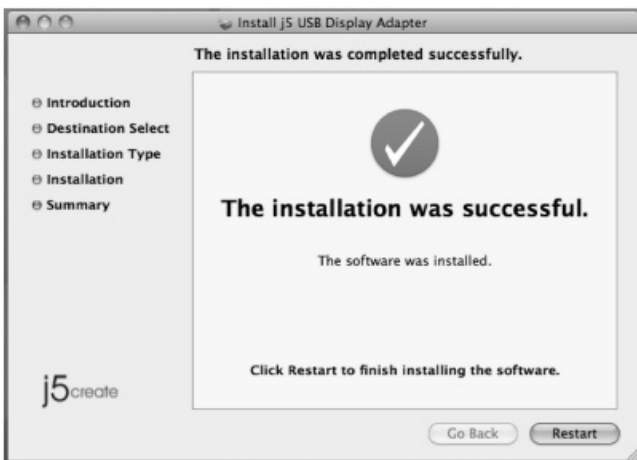
* Driver download is available at www.j5create.com in "support >download" area.



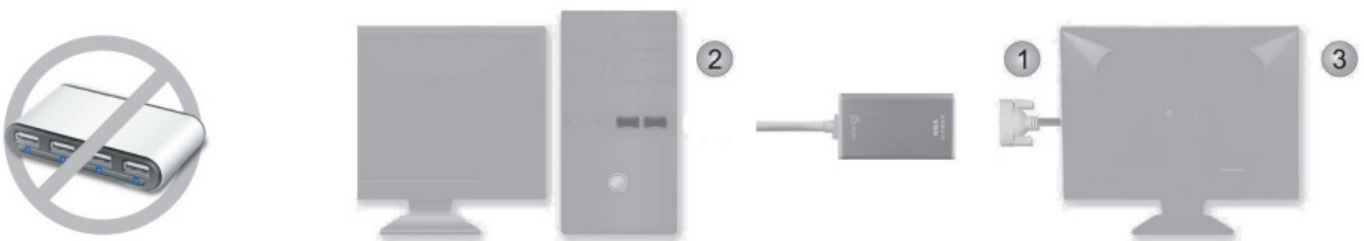
2. Click “Continue” to proceed



3. Type your password then click “OK”. It will take few minutes to process.



4. Click “Restart” to complete



DEVICE HARDWARE INSTALLATION

1. After the computer has rebooted, connect the external display device to the VGA/DVI/HDMI connector of the USB Display Adapter.
2. Connect the USB Display Adapter into a USB port on the host computer.

3. Software processing will take a few minutes. After the software processing is complete you will be ready to use the USB Display Adapter.

*** Multi-USB Display Adapter Installation**

If you are going to install more USB Display Adapters, please repeat the hardware installation and then reboot the computer.



Display Orientation

Turn the connected display device

* This function is not available on MAC



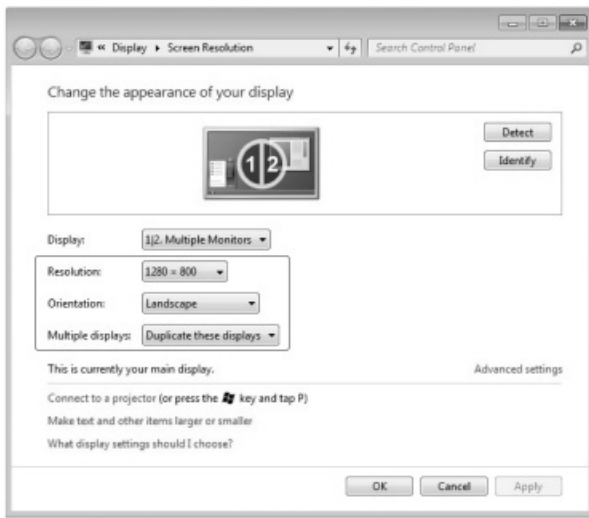
Extended mode



Mirror mode

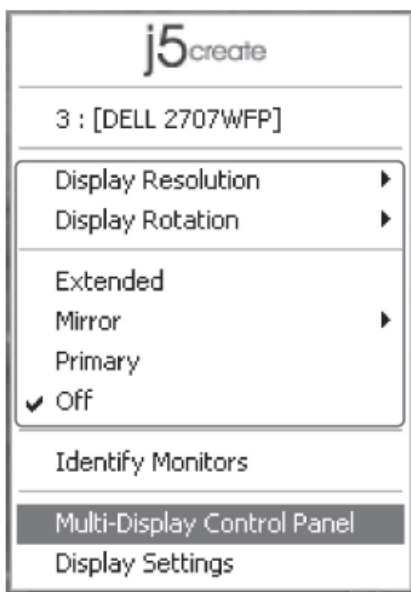


Primary mode



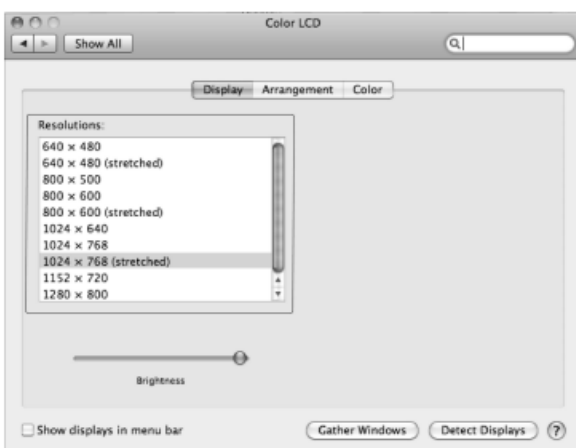
Display Setting on Windows 7

Right click on the desktop and go to “Screen Resolution”



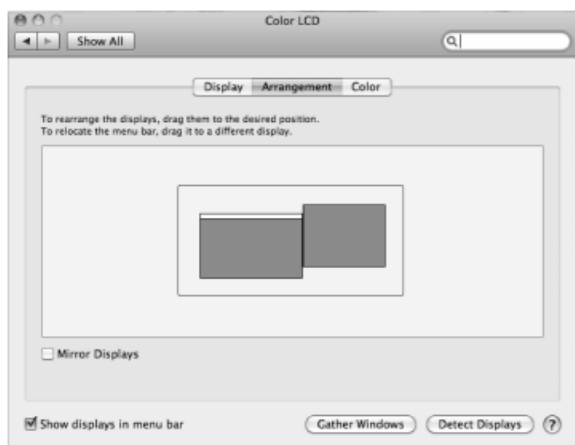
Display Setting on Windows XP

Right click on the icon (j5) on the lower right-hand side of the toolbar



Display Setting on MAC.

Go to (🍏) and then “System Preferences”.
Choose the “Display” or “Arrangement” tab to adjust.



For complete instructions on Functions please refer to the User Manual.

Required Environment

- Microsoft Windows 7, vista, XP(32-bit or 64-bit)
- Mac OS X v10.6 (Snow Leopard) / v10.7 (Lion)
- Available USB 2.0 port

QTY	1~2 dongles	3~4 dongles
CPU	Intel Dual Core 1.8 GHz	Intel Quad core 2.4 GHz
RAM	2 GB	4 GB
USB	Independent power supply was required when using the USB HUB to connect multiple dongles.	

- This device is prioritized for `Office Application` not for `Home Entertainment`.
- Regulatory Compliance : FCC / CE / C-Tick / VCCI

STOP !!

If you have any issues using this product, please try the instructions below before returning this product to the store.

1. The User Manual

Contains detailed instructions and a troubleshooting section, many common issues can be easily resolved by reading the user manual.

2. Online Support

Please visit the j5 create website (www.j5create.com) to find the latest software for your device. If you still experience issues, you can submit a trouble ticket through j5 web support. Your ticket will be handled within 24 hours. We stand behind our products and it is our goal to provide you world class support.

3. Telephone Support

Please call us @ 888-689-4088 and one of our support technicians will be very happy to assist you.



TECHNICAL SUPPORT

Toll free number: 888-689-4088
Business Hours: Mon. - Fri. 10:00 a.m - 6:00 p.m E.S.T
Email: service@j5create.com

Disclaimer

Information in this document is subject to change without notice.

Documents / Resources

	j5create JUA210 USB Display Adapter [pdf] Instruction Manual JUA210 USB Display Adapter, JUA210, USB Display Adapter, Display Adapter, Adapter
	j5create JUA210 USB Display Adapter [pdf] Installation Guide JUA210 USB Display Adapter, JUA210, USB Display Adapter, Display Adapter, Adapter

References

- [j5create International](#)
- [j5create International](#)
- [User Manual](#)

[Manuals+](#), [Privacy Policy](#)

This website is an independent publication and is neither affiliated with nor endorsed by any of the trademark owners. The "Bluetooth®" word mark and logos are registered trademarks owned by Bluetooth SIG, Inc. The "Wi-Fi®" word mark and logos are registered trademarks owned by the Wi-Fi Alliance. Any use of these marks on this website does not imply any affiliation with or endorsement.