



j5create JUA170 USB Display Adapter User Guide

[Home](#) » [j5Create](#) » j5create JUA170 USB Display Adapter User Guide 

Contents

- [1 j5create JUA170 USB Display Adapter](#)
- [2 Product Information](#)
- [3 Product Usage Instructions](#)
- [4 GETTING STARTED Windows](#)
- [5 DEVICE HARDWARE INSTALLATION](#)
- [6 Display Orientation](#)
- [7 Documents / Resources](#)
 - [7.1 References](#)

j5create®

j5create JUA170 USB Display Adapter



Product Information

Product Name	USB Display Adapter – JUA170 / 190
Manufacturer	j5create

Product Usage Instructions

1. Getting Started – Windows:

1. Insert the Driver CD into the CD drive of your host computer. Alternatively, you can download the driver from the j5create website (www.j5create.com) under support > download.

2. Device Hardware Installation:

1. After the computer has rebooted, connect the external display device to the VGA/DVI/HDMI connector of the USB DisplayAdapter.
2. Connect the USB Display Adapter into a USB port on the host computer.
3. Software processing will take a few minutes. Once it has been completed, restart your computer. After your computer has restarted, you will be ready to use the USB Display Adapter.

3. Multi-USB Display Adapter Installation:

1. If you are installing additional USB Display Adapters, repeat steps 1 & 2 of Device Hardware Installation.
2. After the software processing is complete, reboot the computer.

4. Display Orientation:

- Rotate the display on the connected device using the USB Display Adapter.

5. Mirror Mode:

- Enable mirror mode to display the same content on multiple connected devices.

6. System Requirements:

- CPU: Intel/AMD Dual Core 1.5 GHz or Intel/AMD Quad-core 2.4 GHz
- RAM: 512 MB or 2 GB
- USB: 1-2 dongles or 3-4 dongles
- An independent power supply is required when using the USB HUB to connect multiple dongles.

7. Display Settings:

- Right-click on the desktop and go to Screen Resolution to adjust the display settings.

8. Troubleshooting and Support:

1. Refer to the User Manual for detailed instructions and troubleshooting tips.
2. Visit the j5create website (www.j5create.com) for online support and to download the latest software.
3. If you still experience issues, submit a trouble ticket through j5create web support. Your ticket will be handled within 24 hours.

USB Display Adapter JUA170 / 190

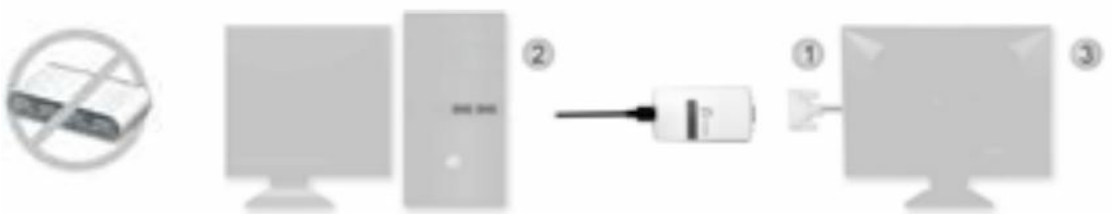


GETTING STARTED Windows

1. Insert the Driver CD into the drive; the setup program should launch automatically.
 - Make sure that the USB Display Adapter is NOT connected to your host computer.
 - To download the driver go to www.j5create.com under “support>download”
2. Executing the Setup.exe application will launch the screen above. Click “Next” to continue



3. When the installation is complete, select “Yes, I want to restart my computer now” and click “Finish” to restart.



DEVICE HARDWARE INSTALLATION

1. After the computer has rebooted, connect the external display device to the VGA/DVI/HDMI connector of the USB Display Adapter.
2. Connect the USB Display Adapter into a USB port on the host computer.
3. Software processing will take a few minutes. Once it has been completed, restart your computer. After your computer has restarted you will be ready to use the USB Display Adapter.

Multi-USB Display Adapter Installation

When installing additional USB Display Adapters, please repeat steps 1 & 2. After the software processing is complete, reboot the computer.

Display Orientation

- Rotate the display on the connected device



- Extended mode



- Mirror mode

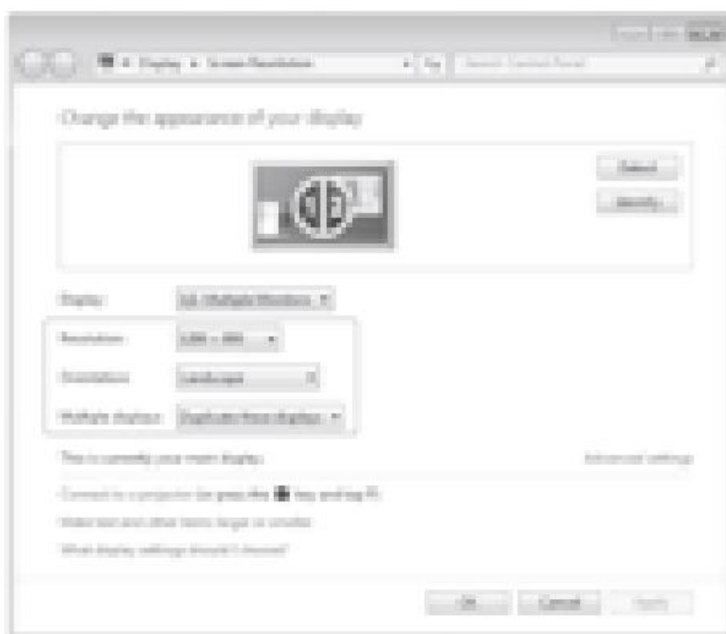


- Primary mode





Display Settings

Right-click on the desktop and go to “Screen Resolution”



USB Display / Super Utility

Right-click on the icon () () on the lower right-hand side of the computer

System Requirements

- Microsoft Windows 10 / 8.1 / 8 / 7 / Vista / XP (32-bit or 64-bit)
- Available USB 2.0 port

QTY	1~2 dongles	3~4 dongles
CPU	Intel/AMD Dual Core 1.5 GHz	Intel/AMD Quad core 2.4 GHz
RAM	512 MB	2 GB
USB	An independent power supply is required when using the USB HUB to connect multiple dongles.	

- This device is designed for “Office Applications” not for “Home Entertainment”.

STOP!! If you have any problems with this product please contact our technical support team before returning it to the store.

The User Manual

Contains detailed instructions and a troubleshooting section, many common issues can be easily resolved by reading the user manual

Online Support

Please visit the j5create website (www.j5create.com) to find the latest software for your device. If you still experience issues, you can submit a trouble ticket through j5create web support. Your ticket will be handled within 24 hours. We stand behind our products and it is our goal to provide you with world-class support.

Telephone Support

Please call us @ +1-888-988-0488 and one of our support technicians will be very happy to assist you.


TECHNICAL SUPPORT

- **Toll-free number:** +1-888-988-0488
- **Business Hours:** Mon. – Frei. 10.00-19.00 U.S.A-E.S.T
- **Email:** service@j5create.com

Disclaimer

Information in this document is subject to change without notice.

Documents / Resources

	j5create JUA170 USB Display Adapter [pdf] User Guide JUA170, JUA190, JUA170 USB Display Adapter, USB Display Adapter, Display Adapter, Adapter
---	---

References

- j5 [j5create International](#)
- ^{MH} [Search - Manual-Hub.com](#)
- j5 [j5create International](#)