



j5create JSPAC4430 Matter Enabled Smart Plug Power Strip Installation Guide

[Home](#) » [j5Create](#) » j5create JSPAC4430 Matter Enabled Smart Plug Power Strip Installation Guide 

j5create JSPAC4430 Matter Enabled Smart Plug Power Strip



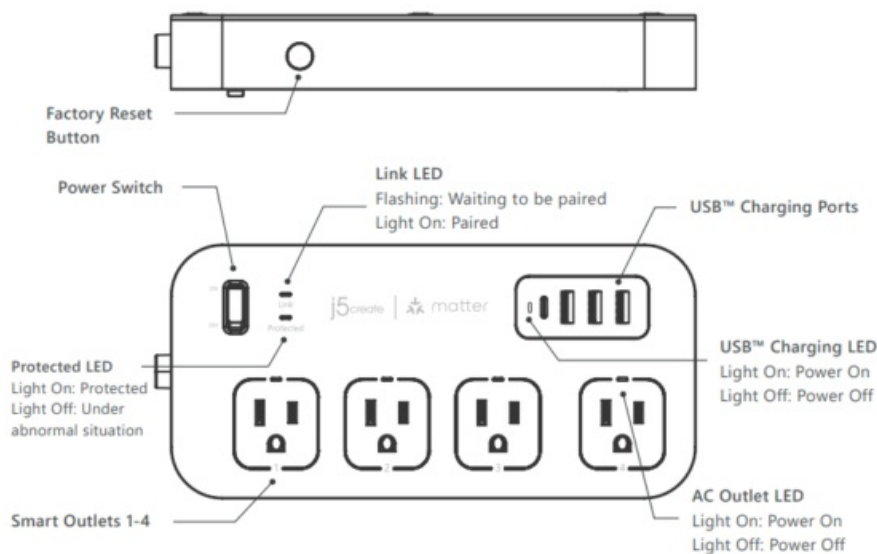
STOP!

If you have any problems with this product, please contact our technical support team for assistance

Contents

- [1 Product Description](#)
- [2 Features](#)
- [3 Set Up Your Smart Power Strip](#)
- [4 Add to Apple® HomeKit® via Matter](#)
- [5 Add to Google Home™ via Matter](#)
- [6 Having Trouble Setting Up via Matter?](#)
- [7 Wall-Mount Installation Guide](#)
- [8 FCC Information](#)
- [9 LIMITED WARRANTY](#)
- [10 ISED Statement](#)
- [11 LIMITATION OF WARRANTY](#)
- [12 Restricted Substance Content Labeling Statement](#)
- [13 TECHNICAL SUPPORT](#)
- [14 Documents / Resources](#)
 - [14.1 References](#)
- [15 Related Posts](#)

Product Description



Features

- Matter certified for compatibility with multiple smart home platforms.
- Remote control with voice support for Apple® Home Pod®, Google Home™, Amazon Alexa®, and Samsung® SmartThings™.
- Power and charge multiple devices at once with 4 AC outlets and a 30W 4-port USB™ GaN charging station (one USB-C® and three USB™ Type-A).
- US standard 4.9ft/1.5m AC cord with a joule rating of 500J
- Rated input: ~125Vac / 60Hz, with a rated current of 15A Max
- Power Distribution:

USB-C® 1	Type-A 1	Type-A 2	Type-A 3	Total Output
30W				30W
	18W			18W
		5V 2A (10W)		10W
			5V 2A (10W)	10W
20W	A1 or A2 or A3: 5V 2A (10W)			30W
	A1+A2 or A1+A3 or A2+A3: 5V 2A (10W)			10W
20W	A1+A2 or A1+A3 or A2+A3: 5V 2A (10W)			30W
	A1+A2+A3: 5V 2A (10W)			10W
20W	A1+A2+A3: 5V 2A (10W)			30W

Set Up Your Smart Power Strip

Before You Start: As a Matter-certified device, you'll need a Matter controller (e.g. Home Pod mini®, Google® Nest Mini™, Echo Dot™) and a smart home app from the same ecosystem for remote control. Here's how to set it up with popular ecosystems like Alexa®, Apple®, and Google® via Matter

Add to Alexa® via Matter

1. Check Compatibility:

A. Alexa® App version: 2023.15 or later

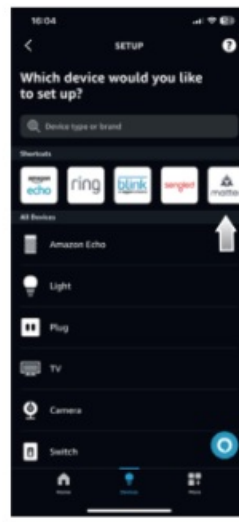
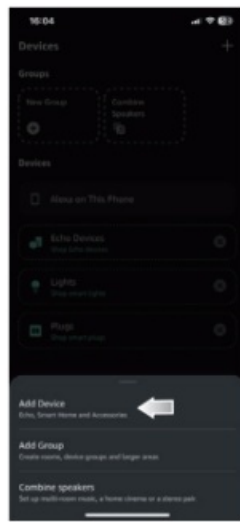
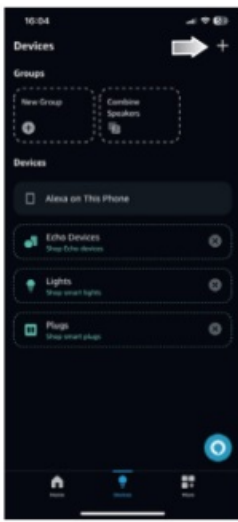
B. Matter-supported devices:

Device	Version
Echo™/Echo Dot™	5th Gen: Echo Dot™, Echo Dot™ (Gen 5 with Clock) 4th Gen: Echo™, Echo Dot™, Echo Dot™ (Gen 4 with Clock) 3rd Gen: Echo™, Echo Dot™, Echo Dot™ (Gen 3 with Clock)
Echo Show™	3rd Gen: Echo Show™ 10, Echo Show™ 15 2nd Gen: Echo Show™ 8, Echo Show™ 5 1st Gen: Echo Show™, Echo Show™ 8

2. Connect the JSPAC4430 to the power source, switch on the Power Switch, then press and hold the Factory Reset Button for about 5 seconds until the Link LED starts flashing. Pairing mode will then start and remain active for five minutes.

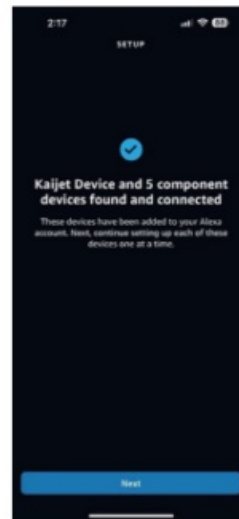
3. Launch the Alexa® app

A. Go to the Devices page, Tap “+”, tap “Add Device”, then choose “Matter”



B. Tap “Yes” for confirming devices have a Matter logo, then tap “Scan QR code” and scan the setup QR code (on the bottom of JSPAC4430). Now simply wait for the app to complete setup.

* In some cases, a Wi-Fi® connection setup page may appear, please choose a Wi-Fi® connection and follow the instructions in the app to complete setup.



Add to Apple® HomeKit® via Matter

1. Check Compatibility:

A. iOS® system: 16.6 or later.

B. Matter-supported devices: Home Pod®, Home Pod® 2, Home Pod mini®, Apple TV® 4K 2021 (or later).

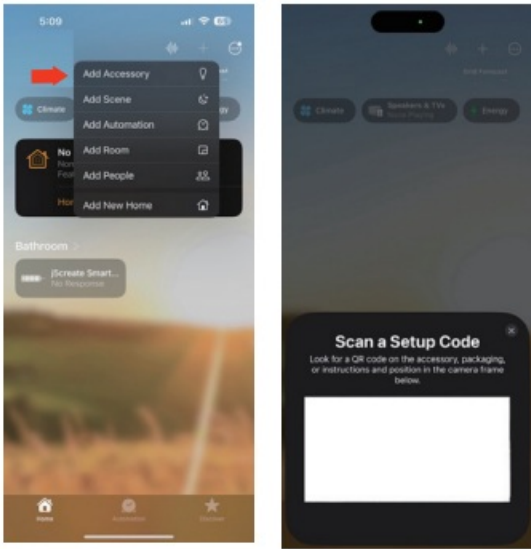
* It's recommended to update your iOS® devices to the latest version to ensure better Matter compatibility.

2. Connect the JSPAC4430 to the power source, switch on the Power Switch, then press and hold the Factory Reset Button for about 5 seconds until the Link LED starts flashing. (Pairing mode will then start and remain active for five minutes.)

3. Launch the Home App.

A. Tap “+” and then tap “Add Accessory”.

Then scan the setup QR code (on the bottom of JSPAC4430). Now simply wait for the app to complete setup.



B. Wait for Home app to add the device and follow the instructions in the app to complete setup.

Add to Google Home™ via Matter

1. Check Compatibility:

A. Google Home™ App is required on your smart phone (Android™: 3.3.1.4 or later. iOS®: 3.3.104 or later.)

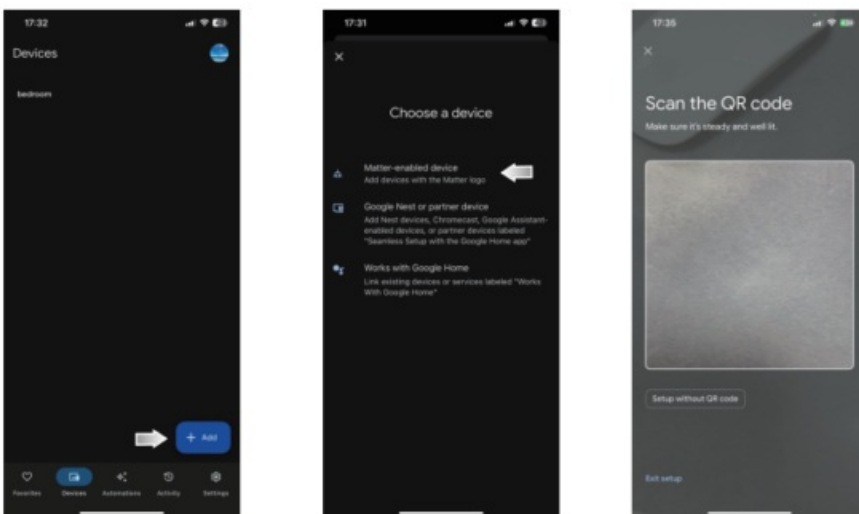
B. Matter-supported devices: Nest Audio™ Nest Hub™ Nest Hub™ (2nd gen) Nest Hub Max™ Nest Mini™ Nest™ WiFi® Pro.

* It's recommended to update your Google Home™ devices to the latest version to ensure better Matter compatibility.

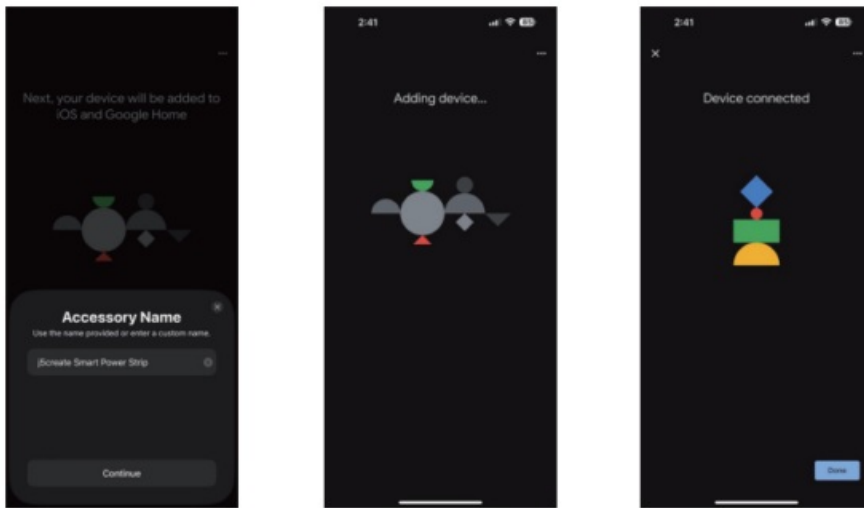
2. Connect the JSPAC4430 to the power source, switch on the Power Switch, then press and hold the Factory Reset Button for about 5 seconds until the Link LED starts flashing. (Pairing mode will then start and remain active for five minutes.)

3. Launch the Google Home™ App.

A. Go to the Devices page, tap “+ Add”, then choose “Matter-enabled device”. Scan the setup QR code (on the bottom of JSPAC4430)



B. Wait for the Google Home™ app to add the device and follow the instructions in the app to complete setup

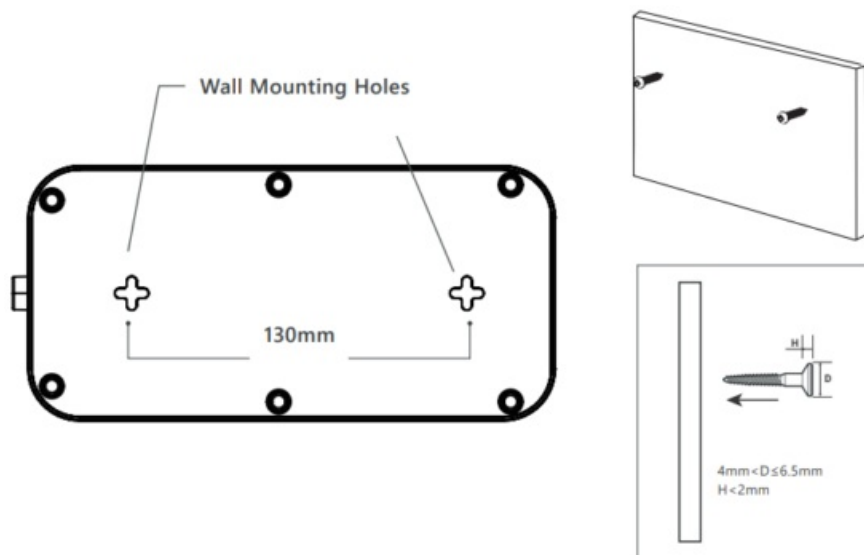


Having Trouble Setting Up via Matter?

Please check the following to resolve most setup issues:

1. Ensure that your smart home controller and app are updated to support Matter.
2. If connected to a 5 GHz network switch to a 2.4 GHz Wi-Fi® network with internet access during setup.
(Matter devices support 2.4 GHz Wi-Fi® connection only)
3. Restart your Matter controller and smartphone, then factory reset the JSPAC4430.

Wall-Mount Installation Guide



FCC Information

This equipment has been tested and found to comply with the limits for a Class B digital device, pursuant to part 15 of the FCC Rules. These limits are designed to provide reasonable protection against harmful interference in a residential installation. This equipment generates, uses and can radiate radio frequency energy and, if not installed and used in accordance with the instructions, may cause harmful interference to radio communications. However, there is no guarantee that interference will not occur in a particular installation. If this equipment does cause harmful interference to radio or television reception, which can be determined by turning the equipment off and on, the user is encouraged to try to correct the interference by one or more of the following measures:

- Reorient or relocate the receiving antenna.
- Increase the separation between the equipment and receiver.
- Connect the equipment into an outlet on a circuit different from that to which the receiver is connected.
- Consult the dealer or an experienced radio/TV technician for help.

This device complies with part 15 of the FCC Rules. Operation is subject to the following two conditions: (1) This device may not cause harmful interference, and (2) this device must accept any interference received, including interference that may cause undesired operation.

Changes or modifications not expressly approved by the party responsible for compliance could void the user's authority to operate this device.

LIMITED WARRANTY

j5create offers a limited 2-year warranty. User's wear & tear damage is not included. The user shall call or email j5create customer service with the defect information of the product and obtain a return authorization number. Users are responsible for one-way return freight cost and we will take care of one-way freight back. In order to obtain a return authorization number, users should have the following information handy when calling or emailing the service team:

- (i) a copy of the original purchase invoice to verify your warranty
- (ii) a product serial number
- (iii) a description of the problem
- (iv) customer's name, address, and telephone number

j5create does not warrant that the operation of the product will be uninterrupted or error-free. j5create is not responsible for damage arising from failure to follow instructions relating to the product's use. This warranty does not apply to: (a) consumable parts, unless damage has occurred due to a defect in materials or workmanship; (b) cosmetic damage, including but not limited to scratches, dents, and broken plastic on ports; (c) damage caused by use with non-j5create products; (d) damage caused by natural disasters; (e) damage caused by human misuse (lost, accident, abuse, misuse or other external causes); (f) damage caused by operating the product outside the permitted or intended uses described by j5create; (g) damage caused by service (including upgrades and expansions) performed by anyone who is not a representative of j5create or a j5create Authorized Service Provider; (h) a product or part that has been modified to alter functionality or capability without the written permission of j5create; or (i) if any j5create serial number on the product has been removed or defaced. If such a situation occurs, j5create will calculate the cost of materials and repair for your reference. This warranty is given by j5create in lieu of any other warranties expressed or implied.

FCC Radiation Exposure Statement:

This equipment complies with FCC radiation exposure limits set forth for an uncontrolled environment. This equipment should be installed and operated with minimum distance 20cm between the radiator & your body.

ISED Statement

This device complies with Industry Canada licence-exempt RSS standard(s).
Operation is subject to the following two conditions:

1. This device may not cause interference, and
2. This device must accept any interference, including interference that may cause undesired operation of the device.

Radiation Exposure Statement

This equipment complies with Canada radiation exposure limits set forth for an uncontrolled environment.
This equipment should be installed and operated with minimum distance 20cm between the radiator & your body.
CAN ICES-003(B) / NMB-003(B)

LIMITATION OF WARRANTY

THIS WARRANTY GIVES YOU SPECIFIC LEGAL RIGHTS, AND YOU MAY HAVE OTHER RIGHTS THAT VARY FROM STATE TO STATE (OR BY COUNTRY OR PROVINCE). OTHER THAN AS PERMITTED BY LAW, J5CREATE DOES NOT EXCLUDE, LIMIT OR SUSPEND OTHER RIGHTS YOU MAY HAVE, INCLUDING THOSE THAT MAY ARISE FROM THE NONCONFORMITY OF A SALES CONTRACT. FOR A FULL UNDERSTANDING OF YOUR RIGHTS YOU SHOULD CONSULT THE LAWS OF YOUR COUNTRY, PROVINCE OR STATE. TO THE EXTENT NOT PROHIBITED BY LAW IN YOUR STATE, PROVINCE, JURISDICTION OR COUNTRY, THIS WARRANTY AND THE REMEDIES SET FORTH ARE EXCLUSIVE AND IN LIEU OF ALL OTHER WARRANTIES, REMEDIES AND CONDITIONS, WHETHER ORAL, WRITTEN, STATUTORY, EXPRESS OR IMPLIED.

J5CREATE'S RESPONSIBILITY FOR MALFUNCTIONS AND DEFECTS IN HARDWARE AND/OR SOFTWARE IS LIMITED TO REPAIR OR REPLACEMENT AS SET FORTH IN THIS WARRANTY. J5CREATE'S LIABILITY DOES NOT EXTEND BEYOND THE REMEDIES PROVIDED FOR IN THIS LIMITED WARRANTY, AND J5CREATE DOES NOT ACCEPT LIABILITY FOR CONSEQUENTIAL OR INCIDENTAL DAMAGES, FOR THIRD-PARTY CLAIMS AGAINST YOU FOR DAMAGES, FOR PRODUCTS NOT BEING AVAILABLE FOR USE, OR FOR LOST OR DAMAGED DATA OR SOFTWARE. J5CREATE DOES NOT WARRANT THAT THE OPERATION OF ANY J5CREATE PRODUCT WILL BE UNINTERRUPTED OR ERROR FREE.

J5CREATE'S LIABILITY IN ANY SITUATION WILL BE NO MORE THAN THE AMOUNT YOU PAID FOR THE SPECIFIC PRODUCT THAT IS THE SUBJECT OF A CLAIM. THIS IS THE MAXIMUM AMOUNT FOR WHICH WE ARE RESPONSIBLE.

EXCEPT FOR THE EXPRESS WARRANTIES CONTAINED IN THIS WARRANTY AND TO THE EXTENT NOT PROHIBITED BY LAW, J5CREATE DISCLAIMS ALL OTHER WARRANTIES AND CONDITIONS, EXPRESS OR IMPLIED, STATUTORY OR OTHERWISE, INCLUDING WITHOUT LIMITATION, WARRANTIES OF MERCHANTABILITY, MERCHANTABLE QUALITY AND FITNESS FOR A PARTICULAR PURPOSE AND WARRANTIES AND CONDITIONS AGAINST HIDDEN OR LATENT DEFECTS. SOME STATES, PROVINCES, JURISDICTIONS OR COUNTRIES DO NOT ALLOW DISCLAIMERS OF IMPLIED WARRANTIES AND CONDITIONS, SO THIS DISCLAIMER MAY NOT APPLY TO YOU.

TO THE EXTENT SUCH WARRANTIES AND CONDITIONS CANNOT BE DISCLAIMED UNDER THE LAWS OF THE UNITED STATES, CANADA (AND ITS PROVINCES) OR OTHERWISE, J5CREATE LIMITS THE DURATION AND REMEDIES OF SUCH WARRANTIES AND CONDITIONS TO THE DURATION OF THIS EXPRESS LIMITED WARRANTY AND, AT J5CREATE'S OPTION, REPAIR OR REPLACEMENT SERVICES. SOME STATES, PROVINCES, JURISDICTIONS OR COUNTRIES MAY NOT ALLOW LIMITATIONS ON HOW LONG AN IMPLIED WARRANTY OR CONDITION MAY LAST, SO THE LIMITATION DESCRIBED ABOVE MAY NOT APPLY TO YOU.

NO WARRANTIES OR CONDITIONS, WHETHER EXPRESS OR IMPLIED, WILL APPLY AFTER THE LIMITED WARRANTY PERIOD HAS EXPIRED. SOME STATES, PROVINCES, JURISDICTIONS OR COUNTRIES DO NOT ALLOW LIMITATIONS ON HOW LONG AN IMPLIED WARRANTY OR CONDITION LASTS, SO THIS LIMITATION MAY NOT APPLY TO YOU.

WARRANTY SUPPORT ONLY APPLIES WHEN THE COVERED PRODUCT IS LOCATED WITHIN THE COUNTRY IN WHICH J5CREATE ORIGINALLY SOLD THE SYSTEM, AS REFLECTED IN J5CREATE'S RECORDS. IF YOU NEED SUPPORT FOR THE PRODUCT OUTSIDE OF THE COUNTRY OF ORIGIN (FOR EXAMPLE, WHILE TRAVELING, OR IF THE SYSTEM HAS BEEN RELOCATED TO A NEW COUNTRY), THEN J5CREATE MAY OFFER YOU OTHER SUPPORT OPTIONS FOR AN ADDITIONAL CHARGE.

Restricted Substance Content Labeling Statement

Declaration of the Presence Condition of the Restricted Substances Marking

Equipment name: 4-socket 4-port fast charging smart extension cable Type designation (Type): JSPAC4430						
Unit	Restricted substances and its chemical symbols					
	Lead (Pb)	Mercury (Hg)	Cadmium (Cd)	Hexavalent chromium (Cr+6)	Polybrominated biphenyls (PBB)	Polybrominated diphenyl ethers (PBDE)
shell	○	○	○	○	○	○
PCB	○	○	○	○	○	○
transformer	○	○	○	○	○	○
Other metals	—	○	○	○	○	○
<p>Note 1 “Exceeding 0.1 wt %” and “exceeding 0.01 wt %” indicate that the percentage content of the restricted substance exceeds the reference percentage value of presence condition.</p> <p>Note 2 “○” indicates that the percentage content of the restricted substance does not exceed the percentage of reference value of presence.</p> <p>Note 3 The “—” indicates that the restricted substance corresponds to the exemption.</p>						

Rating / rated / rated capacity: 125V~ 60Hz 15A 1875W max

DC Output / DC output / DC power:

USB-C: PD 5.0V 3.0A(15.0W), 9.0V 3.0A(27.0W), 12.0V 2.5A(30.0W Max) / PPS 5.0-11.0V 2.75A

USB-A1: 5.0V 3.0A(15.0W), 9.0V 2.0A(18.0W), 12.0V 1.5A(18.0W Max)

USB-A2/A3: 5.0V 2.0A(10.0W Max)

USB-C + A1/A2/A3: PD 20.0W/PPS 19.8W + 5.0V 2.0A(10.0W)

USB-A1+A2/A3 or A2+A3: 5.0V 2.0A(10.0W)

USB-C+(A1+A2/A3) or C+(A2+A3): PD 20.0W/PPS 19.8W + (5.0V 2.0A(10.0W))

USB-A1+A2+A3: 5.0V 2.0A(10.0W)

USB-C+(A1+A2+A3): PD 20.0W/PPS 19.8W + (5.0V 2.0A(10.0W))

Total DC Output/DC total output/DC total output: 30.0W Max

Operating temperature / operating temperature / action temperature: 0 – 35°C

Altitude / altitude / altitude: <2000

Wireless specification / Wireless specification: Wireless 2.4G, Bluetooth 5.1

Operating frequency / operating frequency

BLE: 2402MHz – 2480MHz (6dBm)

Apple, HomeKit, Siri, AppleTV, Home Pod, and Home mini are trademarks of Apple Inc., its affiliates or its respective owners, registered or used in many jurisdictions worldwide. Google Home, Nest, Nest mini, Nest Audio, Nest Hub, and Nest Hub Max are trademarks of Google LLC, its affiliates or its respective owners, registered or used in many jurisdictions worldwide. Amazon Alexa, Echo, Echo Dot, Echo Studio, and Echo Show are trademarks of Amazon Services LLC, its affiliates or its respective owners, registered or used in many jurisdictions worldwide. Wi-Fi is a trademark of Wi-Fi Alliance, its affiliates or its respective owners, registered or used in many jurisdictions worldwide. Samsung and SmartThings are trademarks of Samsung Electronics Co., Ltd., its affiliates or its respective owners, registered or used in many jurisdictions worldwide. USB and USB-C are trademarks of USB Implementers Forum, Inc., its affiliates or its respective owners, registered or used in many jurisdictions worldwide. Other trademarks and trade names may be used in this document to refer to either the entities claiming the marks

and/or names or their products and are the property of their respective owners. All company, product and service names used are for identification purposes only. Use of these names, logos, and brands does not imply endorsement. We disclaim any interest in the marks of others.

TECHNICAL SUPPORT

Customer Service : [888-988-0488](tel:888-988-0488)

Technical Support : [888-689-4088](tel:888-689-4088)

Email : service@j5create.com

Service Hours : Mon. – Fri. 10:00 – 18:00 E.S.T

For more information, please visit our website at <http://www.j5create.com>

Copyright© 2024 j5create. All rights reserved. All trade names are registered trademarks of their respective owners.

Features and specifications are subject to change without notice. Product may not be exactly as shown in the diagrams.



202410-V2




Documents / Resources



[j5create JSPAC4430 Matter Enabled Smart Plug Power Strip](#) [pdf] Installation Guide
2AD37JSPAC4430, JSPAC4430 Matter Enabled Smart Plug Power Strip, JSPAC4430, Matter Enabled Smart Plug Power Strip, Enabled Smart Plug Power Strip, Smart Plug Power Strip, Plug Power Strip, Power Strip, Strip

References

- j5 [j5create International](#)
-  [ãŠă•ă„ă^ă.ă – new-jp-j5create](#)
- [User Manual](#)

[Manuals+](#), [Privacy Policy](#)

This website is an independent publication and is neither affiliated with nor endorsed by any of the trademark owners. The "Bluetooth®" word mark and logos are registered trademarks owned by Bluetooth SIG, Inc. The "Wi-Fi®" word mark and logos are registered trademarks owned by the Wi-Fi Alliance. Any use of these marks on this website does not imply any affiliation with or endorsement.