

j5create JCH462 Wormhole Switch Display Sharing Hub User Manual

[Home](#) » [j5Create](#) » j5create JCH462 Wormhole Switch Display Sharing Hub User Manual 



Contents

- [1 Features](#)
- [2 System Requirements](#)
- [3 Driver Installation Guide](#)
 - [3.1 STEP 1](#)
 - [3.2 Step 2](#)
 - [3.3 Step 3](#)
- [4 Function Description](#)
 - [4.1 Display Sharing](#)
 - [4.1.1 Extend Mode](#)
 - [4.1.2 Duplicate Mode](#)
 - [4.1.3 Touch Control Sharing](#)
 - [4.1.4 Keyboard/Mouse, Date, and Clipboard Sharing](#)
 - [4.1.5 Documents / Resources](#)
 - [4.1.5.1 References](#)

Features

- Share screen, files, keyboard, mouse, and clipboard between two Windows® computers
- Supports Duplicate and Extend modes in Virtual 2nd Display
 - Movable and resizable Picture-in-Picture window when using Duplicate mode
 - Share files easily by Drag & Drop across screen/PIP window or Copy & Paste
- Drop across screen/PIP window or Copy & Paste
 - Supports virtual multi-touch, Windows® gesture function and stylus pen when used with a tablet
 - The screen will automatically rotate and resize with the rotation of Windows® tablet when using Extended mode
 - Provides 2 USB™ Type-A and 1 USB-C® ports to connect peripherals.
- Equipped with a two USB™ Type-A 5Gbps and one USB-C® 5Gbps ports for connecting peripherals (only works with PC1 host)

System Requirements

Windows®

- OS: Windows® 11 / 10
- Available USB-C® port, USB™ 3.2 is recommended
- Hard disk capacity: at least 100MB
- CPU – 8th Generation Intel® Core™ i5 Processors, 4 Cores or greater
- RAM – 8GB or greater

Driver Installation Guide

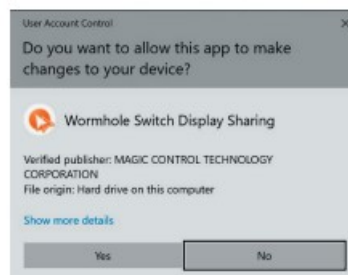
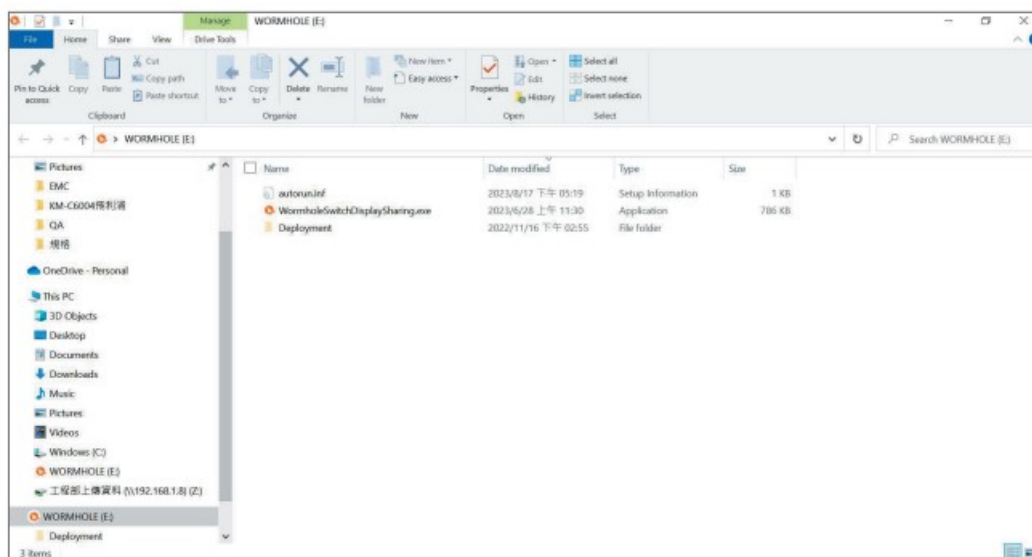
STEP 1

Please connect the JCH462 to both computers you want to use.



****The computer that connects with the shorter cable of JCH462 will be the main host and will utilize USB™ ports on the JCH462.****

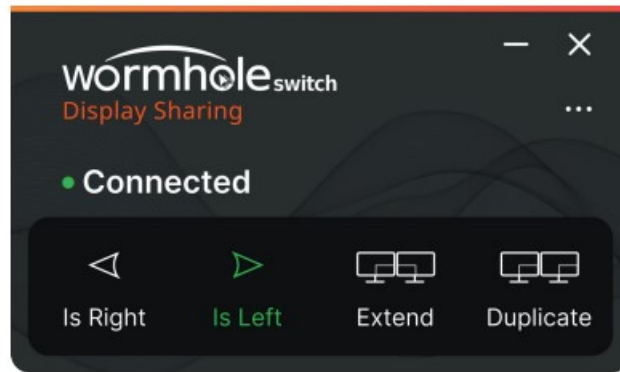
Step 2



Click “Yes”.

Step 3

After installing the driver, a control bar will appear to the right corner of both screens. The control bar allows you to control display and data sharing between two computers.

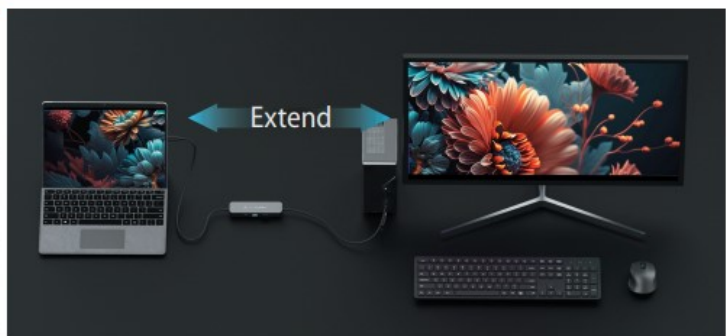
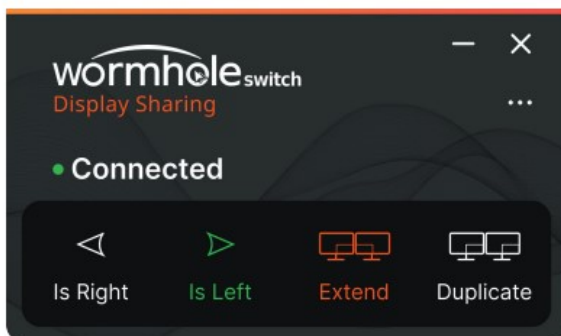


Function Description

Display Sharing

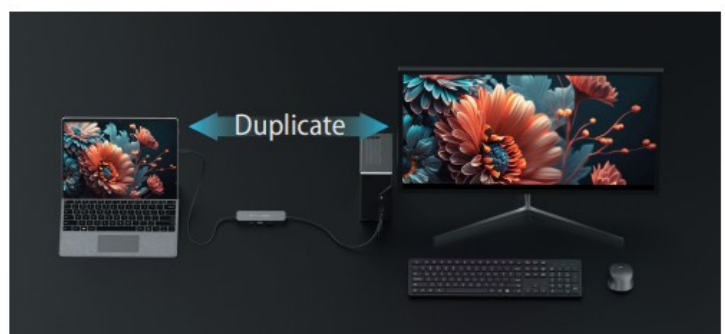
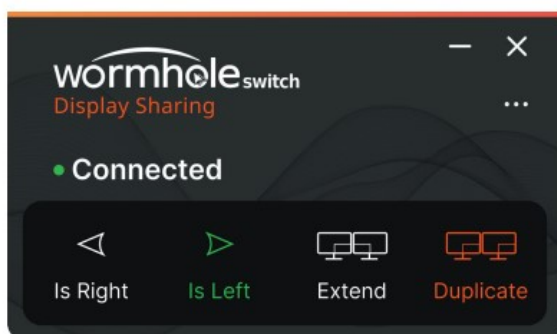
Extend Mode

- This feature allows the attached computer to work as an extended display.



Duplicate Mode

- This feature allows the attached computer to mirror the display of main host computer (PC1).



- In Duplicate Mode, the screen of the secondary computer (PC2) can be turned into a resizable Picture-in-Picture window.



Touch Control Sharing

- If the secondary computer (PC2) has a touch screen, you can use the touch panel to control the attached computer in Duplicated Mode or the display area extended to the touch screen in Extended Mode.




Keyboard/Mouse, Date, and Clipboard Sharing

- Allows you control both computers with a single keyboard and mouse.
- Share files easily by dragging & dropping across the screen or in PIP.
- Easily edit, copy, or paste clipboard content bi-directionally between two computers.



Windows is a trademark of Microsoft Corp., its affiliates or its respective owners, registered or used in many jurisdictions worldwide. macOS is a trademark of Apple Inc., its affiliates or its respective owners, registered or used in many jurisdictions worldwide. Other trademarks and trade names may be used in this document to refer to either the entities claiming the marks and/or names or their products and are the property of their respective owners. All company, product and service names used are for identification purposes only. Use of these names, logos, and brands does not imply endorsement. We disclaim any interest in the marks of others.

Documents / Resources

	<p>j5create JCH462 Wormhole Switch Display Sharing Hub [pdf] User Manual JCH462 Wormhole Switch Display Sharing Hub, JCH462, Wormhole Switch Display Sharing Hub, Switch Display Sharing Hub, Display Sharing Hub, Sharing Hub, Hub</p>
---	---

References

- [User Manual](#)