



j5create JCE133G USB-C to Gigabit Ethernet Adapter Installation Guide

[Home](#) » [j5Create](#) » j5create JCE133G USB-C to Gigabit Ethernet Adapter Installation Guide 

Contents

- [1 j5create JCE133G USB-C to Gigabit Ethernet Adapter](#)
- [2 Product Information](#)
- [3 Product Usage Instructions](#)
- [4 Driver Installation for Windows](#)
- [5 Driver Installation for Mac](#)
- [6 LIMITED WARRANTY](#)
- [7 Documents / Resources](#)
 - [7.1 References](#)



j5create JCE133G USB-C to Gigabit Ethernet Adapter



Product Information

- Product Model: JCE133G
- Language: English
- Manufacturer: Kaijet Technology International B.V.
- Phone Number: +31-(0)6-2880 2882
- Address: Zomerdoorn 20, 3068 MZ Rotterdam, Netherlands
- Email: service@j5create.com

Product Usage Instructions

Step 1

1. Download the latest driver from the official website at www.j5create.com.
2. Once the driver is downloaded, extract it.
3. Go to the driver folder and click on setup.exe to install the driver.

Step 2

Install the driver as prompted:

- When any message is displayed, click Next until the driver is installed completely.
- Once installation is completed, close the driver installation window.

Note: If you want to confirm if the installation is correct:

1. Go to Device Manager.
2. Click on the network adapter option to confirm.
3. If the device name of Realtek USBTM GbE Family Controller is displayed, the external network adapter is installed correctly.

If you have any problems with this product, please contact our the technical support team for assistance:

- Customer Service: 888-988-0488
- Technical Support: 888-689-4088
- Email: service@j5create.com
- Service Hours: Mon. – Fri. 10:00 – 18:00 E.S.T

Native driver support, no additional driver needed in Windows® 10/macOS® 10.6 later/Chrome OS™

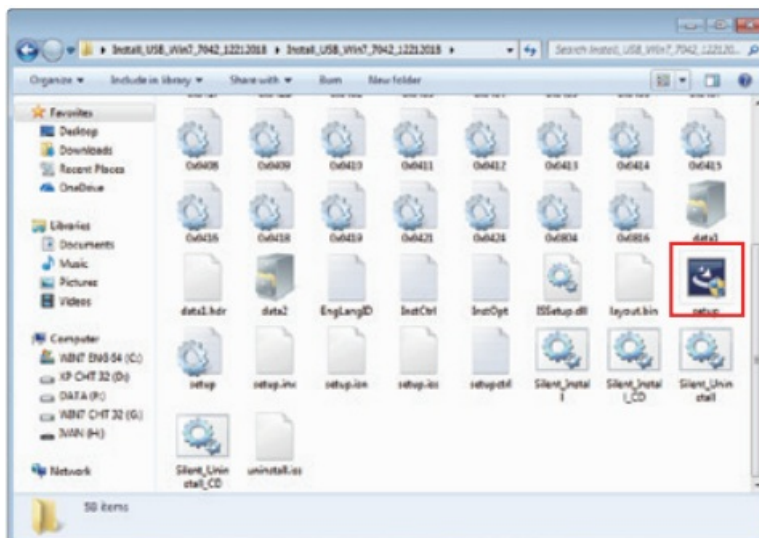
Driver Installation for Windows

Before installation, do not inset the external j5create USBTM network adapter to the USB-C® port on your PC except those running Windows® 10. You need to install the driver first. Once the installation is completed, you can simply insert the external USBTM network adapter to use it without rebooting your PC.

1. Step 1

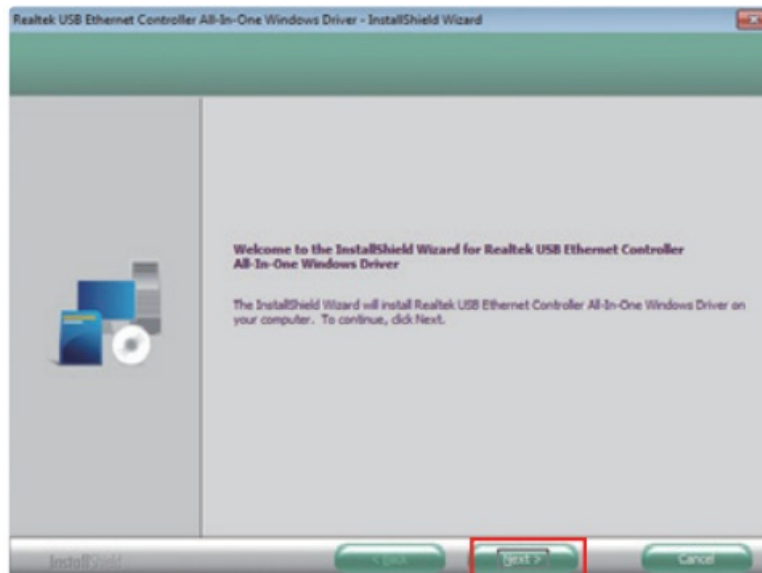
If you have an Internet connection, the driver will be installed automati-cally on your Windows® 10 PC when the external network adapter is inserted. For systems running Windows® 7/8.1, go to the Support and Service page at www.j5create.com and download the driver.

Once the driver is downloaded, extract it, go to the driver folder and click setup.exe to install it.



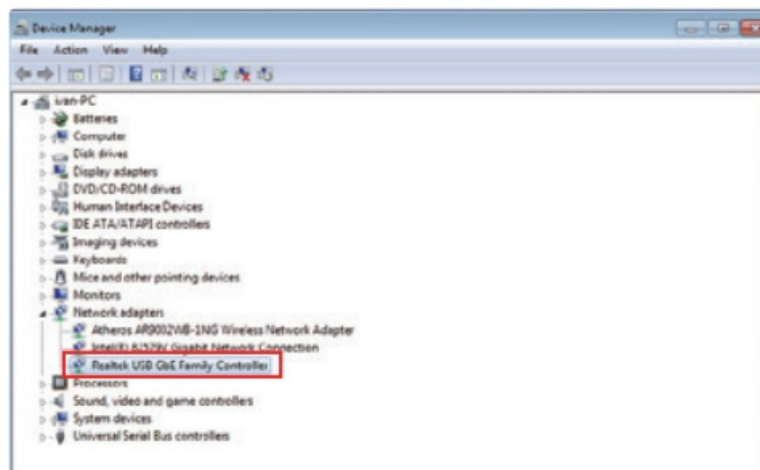
2. Step 2

Install the driver as prompted. When any message is displayed, click “Next” until the driver is installed completely. Once installation is completed, close the driver installation window.



3. Step 3

A reboot is not necessary after installation. Connect the external USBTM network adapter to the USBTM Port / USB-C® port on your PC. The system will start recognition and installation of the inserted adapter. The recognition process may take a while. Once the recognition is completed, you can use your external j5create USB-C® network adapter.



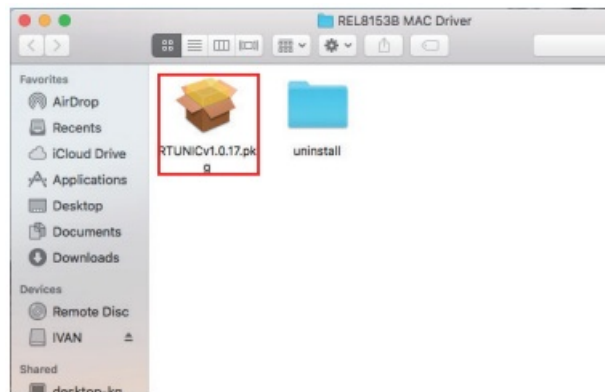
Note: If you want to confirm if the installation is correct, go to Device Manager and click the network adapter option to confirm. If the device name of “Realtek USBTM GbE Family Controller” is displayed, the external network adapter is installed correctly.

Driver Installation for Mac

For Mac® (ver. 10.6 or later) users, you can use the external USBTM network adapter directly by simply inserting it. If your Mac® cannot recognize the inserted external USBTM network adapter correctly, refer to the manual installation procedure below.

1. Step 1

Download the latest driver from our official site at www.j5create.com. Once the driver is downloaded, extract it, go to the driver folder and click RTUNICv1.0.17.pkg to install it.



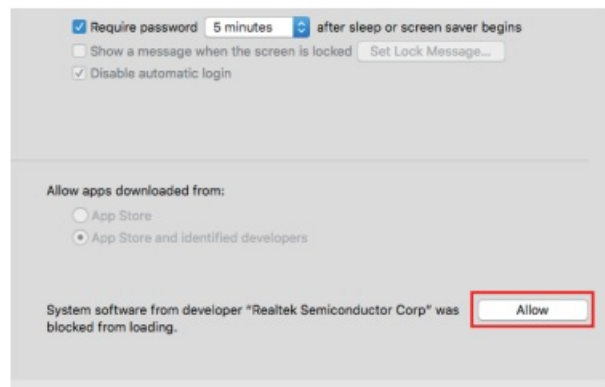
2. Step 2

If the message “System Extension Blocked” is displayed during drive installation, click “Open Security Preferences” and click “Allow” to start the installation.



3. Step 3

Once installation is complete the please restart your Mac®. When rebooted, you can simply use the external USBTM network adapter by inserting it into the USB-C® port.



Note: If you want to confirm if the installation is correct, connect the networking cable and external USB network adapter, and then insert the adapter to the USBTM Port / USB-C® port on your Mac®. Click System Preferences → then click Network Options to confirm if the “USBTM 10/100/1000” device is set to Connect by Default. This setting indicates that the device can be operated normally.

If you have any problems with this product please contact our technical support team for assistance.

TECHNICAL SUPPORT

- Customer Service: 888-988-0488
- Technical Support: 888-689-4088
- Email: service@j5create.com
- Service Hours: Mon. – Fri. 10:00 – 18:00 E.S.T

LIMITED WARRANTY

j5create offers a limited 2-year warranty. User's wear & tear damage is not included. The user shall call or email j5create customer service with the defect information of the product and obtain a return authorization number. Users are responsible for one-way return freight cost and we will take care of one-way freight back. In order to obtain a return authorization number, users should have the following information handy when calling or emailing the service team:

1. a copy of the original purchase invoice to verify your warranty
2. a product serial number
3. a description of the problem
4. customer's name, address, and telephone number

j5create does not warrant that the operation of the product will be uninterrupted or error-free. j5create is not responsible for damage arising from failure to follow instructions relating to the product's use. This warranty does not apply to: (a) consumable parts, unless damage has occurred due to a defect in materials or workmanship; (b) cosmetic damage, including but not limited to scratches, dents, and broken plastic on ports; (c) damage caused by use with non-j5create products; (d) damage caused by natural disasters; (e) damage caused by human misuse (lost, accident, abuse, misuse or other external causes); (f) damage caused by operating the product outside the permitted or intended uses described by j5create; (g) damage caused by service (including upgrades and expansions) performed by anyone who is not a representative of j5create or a j5create Authorized Service Provider; (h) a product or part that has been modified to alter functionality or capability without the written permission of j5create; or (i) if any j5create serial number on the product has been removed or defaced. If such a situation occurs, j5create will calculate the cost of materials and repair for your reference. This warranty is given by j5create in lieu of any other warranties expressed or implied.

LIMITATION OF WARRANTY

THIS WARRANTY GIVES YOU SPECIFIC LEGAL RIGHTS, AND YOU MAY HAVE OTHER RIGHTS THAT VARY FROM STATE TO STATE (OR BY COUNTRY OR PROVINCE). OTHER THAN AS PERMITTED BY LAW, J5CREATE DOES NOT EXCLUDE, LIMIT OR SUSPEND OTHER RIGHTS YOU MAY HAVE, INCLUDING THOSE THAT MAY ARISE FROM THE NONCONFORMITY OF A SALES CONTRACT. FOR A FULL UNDERSTANDING OF YOUR RIGHTS YOU SHOULD CONSULT THE LAWS OF YOUR COUNTRY, PROVINCE OR STATE. TO THE EXTENT NOT PROHIBITED BY LAW IN YOUR STATE, PROVINCE, JURISDICTION OR COUNTRY, THIS WARRANTY AND THE REMEDIES SET FORTH ARE EXCLUSIVE AND IN LIEU OF ALL OTHER WARRANTIES, REMEDIES AND CONDITIONS, WHETHER ORAL, WRITTEN, STATUTORY, EXPRESS OR IMPLIED.

J5CREATE'S RESPONSIBILITY FOR MALFUNCTIONS AND DEFECTS IN HARDWARE AND/OR SOFTWARE IS LIMITED TO REPAIR OR REPLACEMENT AS SET FORTH IN THIS WARRANTY. J5CREATE'S LIABILITY DOES NOT EXTEND BEYOND THE REMEDIES PROVIDED FOR IN THIS LIMITED WARRANTY, AND J5CREATE DOES NOT ACCEPT LIABILITY FOR CONSEQUENTIAL OR INCIDENTAL DAMAGES, FOR THIRD-PARTY CLAIMS AGAINST YOU FOR DAMAGES, FOR PRODUCTS NOT BEING AVAILABLE FOR USE, OR FOR LOST OR DAMAGED DATA OR SOFTWARE. J5CREATE DOES NOT WARRANT THAT THE OPERATION OF ANY J5CREATE PRODUCT WILL BE UNINTERRUPTED OR ERROR-FREE.

J5CREATE'S LIABILITY IN ANY SITUATION WILL BE NO MORE THAN THE AMOUNT YOU PAID FOR THE SPECIFIC PRODUCT THAT IS THE SUBJECT OF A CLAIM. THIS IS THE MAXIMUM AMOUNT FOR WHICH WE ARE RESPONSIBLE. EXCEPT FOR THE EXPRESS WARRANTIES CONTAINED IN THIS WARRANTY AND TO THE EXTENT NOT PROHIBITED BY LAW, J5CREATE DISCLAIMS ALL OTHER WARRANTIES AND CONDITIONS, EXPRESS OR IMPLIED, STATUTORY OR OTHERWISE, INCLUDING WITHOUT LIMITATION, WARRANTIES OF MERCHANTABILITY, MERCHANTABLE QUALITY AND FITNESS FOR A PARTICULAR PURPOSE AND WARRANTIES AND CONDITIONS AGAINST HIDDEN OR LATENT DEFECTS. SOME STATES, PROVINCES, JURISDICTIONS OR COUNTRIES DO NOT ALLOW DISCLAIMERS OF IMPLIED WARRANTIES AND CONDITIONS, SO THIS DISCLAIMER MAY NOT APPLY TO YOU.


TO THE EXTENT SUCH WARRANTIES AND CONDITIONS CANNOT BE DISCLAIMED UNDER THE LAWS OF THE UNITED STATES, CANADA (AND ITS PROVINCES) OR OTHERWISE, J5CREATE LIMITS THE DURATION AND REMEDIES OF SUCH WARRANTIES AND CONDITIONS TO THE DURATION OF THIS EXPRESS LIMITED WARRANTY AND, AT J5CREATE'S OPTION, REPAIR OR REPLACEMENT SERVICES. SOME STATES, PROVINCES, JURISDICTIONS OR COUNTRIES MAY NOT ALLOW LIMITATIONS ON HOW LONG AN IMPLIED WARRANTY OR CONDITION MAY LAST, SO THE LIMITATION DESCRIBED ABOVE MAY NOT APPLY TO YOU. NO WARRANTIES OR CONDITIONS, WHETHER EXPRESS OR IMPLIED, WILL APPLY AFTER THE LIMITED WARRANTY PERIOD HAS EXPIRED. SOME STATES, PROVINCES, JURISDICTIONS OR COUNTRIES DO NOT ALLOW LIMITATIONS ON HOW LONG AN IMPLIED WARRANTY OR CONDITION LASTS, SO THIS LIMITATION MAY NOT APPLY TO YOU.

WARRANTY SUPPORT ONLY APPLIES WHEN THE COVERED PRODUCT IS LOCATED WITHIN THE COUNTRY IN WHICH J5CREATE ORIGINALLY SOLD THE SYSTEM, AS REFLECTED IN J5CREATE'S RECORDS. IF YOU NEED SUPPORT FOR THE PRODUCT OUTSIDE OF THE COUNTRY OF ORIGIN (FOR EXAMPLE, WHILE TRAVELING, OR IF THE SYSTEM HAS BEEN RELOCATED TO A NEW COUNTRY), THEN J5CREATE MAY OFFER YOU OTHER SUPPORT OPTIONS FOR AN ADDITIONAL CHARGE.

For more information please visit our website at <http://www.j5create.com>

Copyright© 2022 j5create. All rights reserved. All trade names are registered trademarks of their respective owners. Features and specifications are subject to change without notice. Product may not be exactly as shown in the diagrams.

Documents / Resources

	j5create JCE133G USB-C to Gigabit Ethernet Adapter [pdf] Installation Guide JCE133G USB-C to Gigabit Ethernet Adapter, JCE133G, USB-C to Gigabit Ethernet Adapter, Ethernet Adapter, Adapter
---	---

References

- [j5create.com](http://www.j5create.com)
- j5 [j5create International](#)
- [j5 新產品 – new-jp-j5create](#)