



# J BURROWS MK300 Wireless Keyboard and Mouse Instruction Manual

[Home](#) » [J.burrows](#) » J BURROWS MK300 Wireless Keyboard and Mouse Instruction Manual 

## Contents

- [1 J BURROWS MK300 Wireless Keyboard and Mouse](#)
- [2 Contents](#)
- [3 Functions](#)
- [4 Mouse Parts](#)
- [5 Installation Guide – 2.4GHz Connectivity](#)
- [6 Indicator Light](#)
- [7 Specifications](#)
- [8 Documents / Resources](#)
- [9 Related Posts](#)

# J.BURROWS

## J BURROWS MK300 Wireless Keyboard and Mouse




## Contents

1. Keyboard
2. Mouse
3. USB-A / USB-C receiver
4. Instruction manual
5. Quick start guide
6. Charging cable



## Functions

The shortcut keys are shortcuts to various functions on your device. They are located on the top row of the keyboard.

Key	Function			
	Windows	iOS	Android	Mac
 	Mute	Mute	Mute	Mute
 	Volume down	Volume down	Volume down	Volume down
 	Volume up	Volume up	Volume up	Volume up
 	Previous track	Previous track	Previous track	Previous track
 	Play/Pause	Play/Pause	Play/Pause	Play/Pause
 	Next track	Next track	Next track	Next track
 	Brightness down	Brightness down	Brightness down	Brightness down
 	Brightness up	Brightness up	Brightness up	Brightness up
 	Select all	Select all	Select all	Select all
 	Copy	Copy	Copy	Copy
 	Paste	Paste	Paste	Paste
 	Cut	Cut	Cut	Cut
 	Search	Search	Search	Search
	Home page	Home page	Home page	N/A
	2.4GHz	2.4GHz	2.4GHz	2.4GHz
	BT1	BT1	BT1	BT1
	BT2	BT2	BT2	BT2

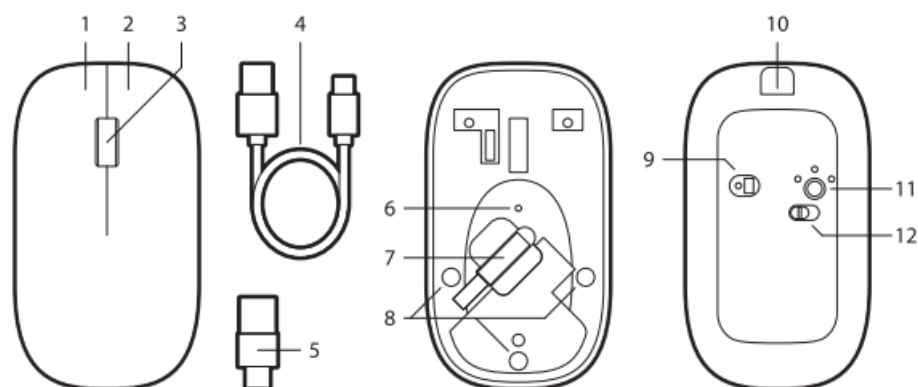
## Note

- Press FN + to lock the multimedia function. The F-keys will no longer function.
- The multimedia keys may vary depending on the versions of Windows, Android, iOS and MacOS.

## Mouse Parts

1. Left button
2. Right button
3. Scroll wheel
4. Charging cable
5. USB-A / USB-C receiver

6. Indicator light
7. Receiver compartment
8. Magnetic closure
9. Optical sensor
10. Charging port
11. Mode button
12. On/Off switch



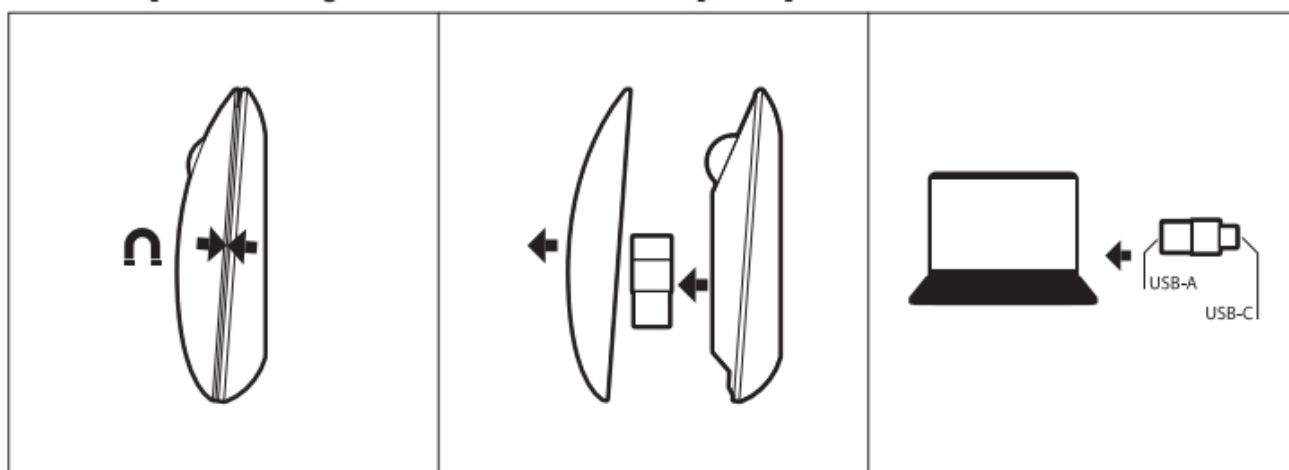
### Note

Press left button and scroll wheel together for more than three seconds to modify the DPI/mouse sensitivity

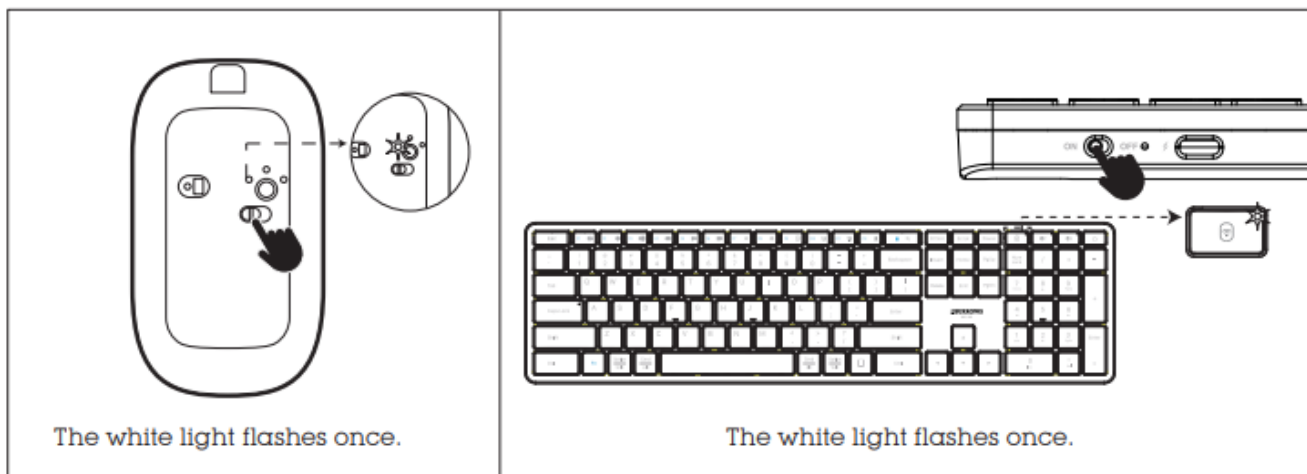
### Installation Guide – 2.4GHz Connectivity



- Remove the magnetic top cover and retrieve USB receiver from the mouse. Reattach the top cover. Plug the USB receiver in the computer port

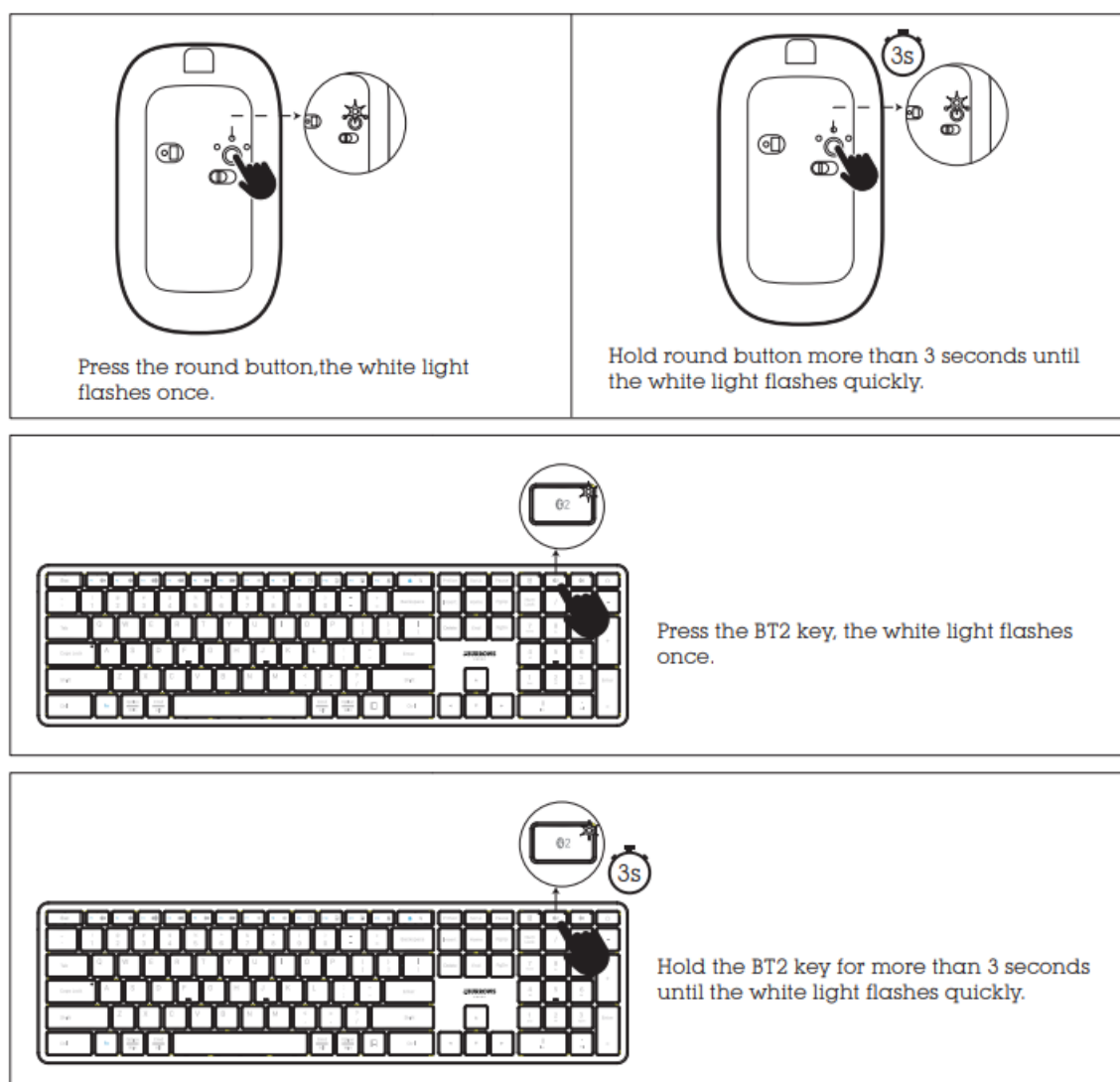


- Turn on the power switch of the keyboard and mouse.



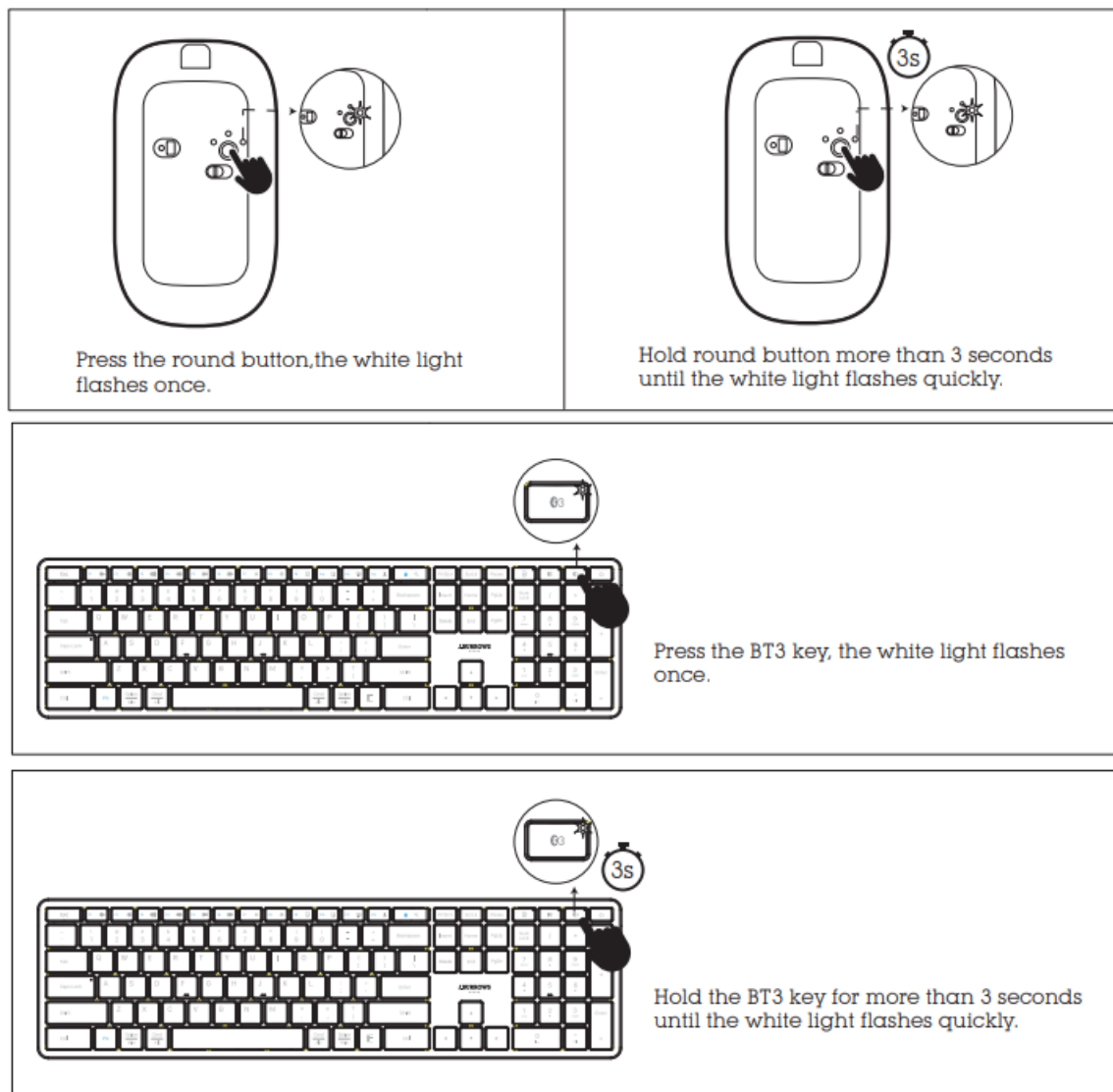
## Installation Guide – Bluetooth Connectivity

### • Connecting to bluetooth device 1



- Now it is in Bluetooth pairing mode. Go to Bluetooth setting on your device and select Elite MK300 for keyboard, MK300 Mouse for mouse. Follow the onscreen instructions to complete the pairing. The light will turn off once Bluetooth pairing is successful

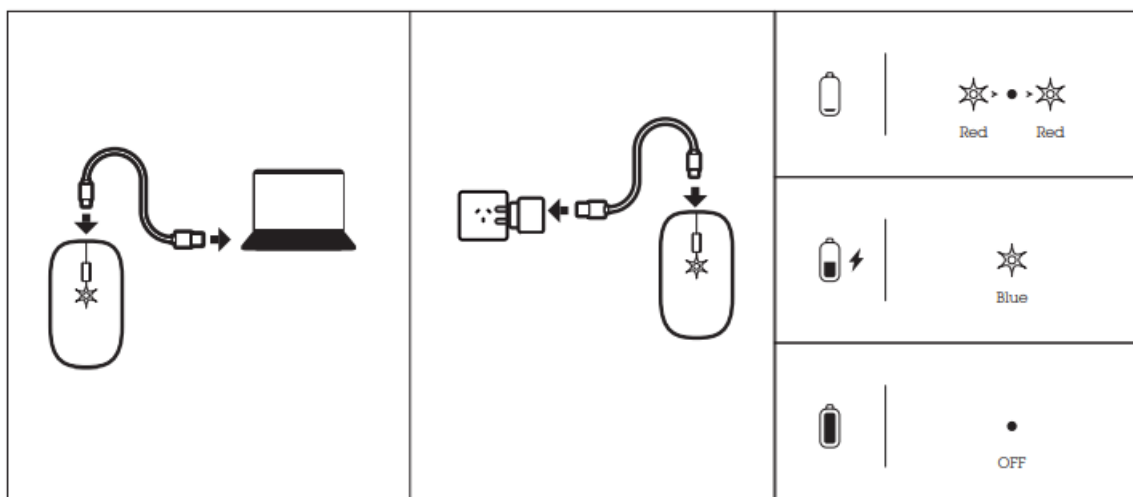
### • Connecting to bluetooth device 2



- Now it is in Bluetooth pairing mode. Go to Bluetooth setting on your device and select Elite MK300 for keyboard, MK300 Mouse for mouse. Follow the onscreen instructions to complete the pairing. The light will turn off once Bluetooth pairing is successful

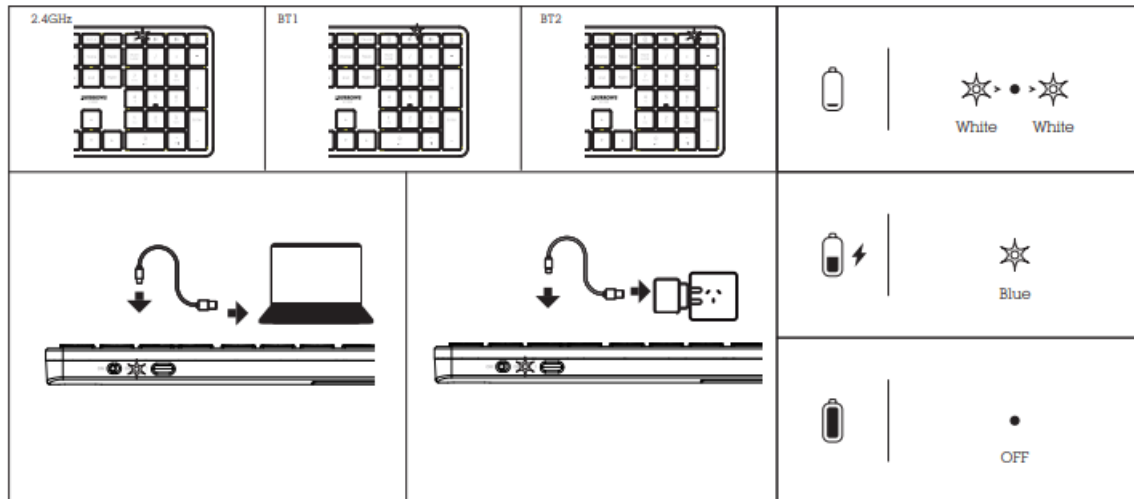
## Indicator Light

- Red LED light will flash when power is low.
- Blue LED light will be on when charging.
- LED light will be off when fully charged. Full charging time is approximately 4 hours.



- The white LED light on the mode keys flash alternately when keyboard has low power.

- The blue LED light near the charging port will be on when charging.
- The light will be off when fully charged. Full charging time is approximately 4 hours.



### Note

Fully charge your Elite MK300 before first use. Before charging, make sure the wireless keyboard and mouse are turned off

## Specifications

- Product Model: Elite MK300
- Officeworks Product Code: JB130C880
- Working Frequency: 2.4GHz
- Keyboard: 3 device connectivity: 2.4GHz x1, Bluetooth 4.2 x 2 Rechargeable battery: Lithium 300mAh Dimensions: 434 x 119 x 21 mm Rating: 3.7V 5mA
- Mouse: 3 device connectivity: 2.4GHz x1, Bluetooth 4.2 x 2 Receiver: USB-A / USB Type-C® DPI: 1000 / 1600 / 2400 Rechargeable battery: Lithium 300mAh Dimensions: 108 x 61 x 31 mm Rating: 3.7V 10mA
- System Requirements: Windows® 10 or later, Mac OS 10.10 or later Android™ 10 or later, or iOS system


Windows is a trademark of the Microsoft Corporation in the United States and other countries. Mac and MacOS are trademarks of Apple Inc., registered in the U.S. and other countries. The Bluetooth® word mark and logos are registered trademarks owned by Bluetooth SIG, Inc. and any use of such marks by Officeworks Ltd is under license. Android is a trademark of Google LLC. IOS is a trademark or registered trademark of Cisco in the U.S. and other countries and is used under license.

### Product Warranty-valid for Australian customers only

Officeworks Ltd warrants that this product will be free from defects and work as intended for 8 years from the date of purchase by the original customer. If the product has any defects or does not work as specified during the Warranty Period, Officeworks will, at its election and at its expense, repair or replace the product. This warranty does not apply: to cosmetic damage; to damage caused by consumables used in connection with the product (such as batteries); where the product has not been used in accordance with all provided instructions; to damage arising from fair wear and tear; where the product has not been subject to reasonable use; where the product has not been intentionally or negligently damaged and/or; if the customer has attempted to repair the product. To make a claim under this warranty, please return your product with your receipt or proof of purchase to your nearest Officeworks store or contact 1300 633 423. the Australian Consumer Law. You are entitled to a replacement or refund for a major failure and compensation for any other reasonably foreseeable loss or damage. You are also entitled to have the goods repaired or replaced if the goods fail to be of acceptable quality and the failure does not amount to a major failure. This warranty is provided in addition to any rights you may be entitled

to under the Competition & Consumer Act 2010. Our goods come with guarantees that cannot be excluded under the Australian Consumer Law. You are entitled to a replacement or refund for a major failure and compensation for any other reasonably foreseeable loss or damage. You are also entitled to have the goods repaired or replaced if the goods fail to be of acceptable quality and the failure does not amount to a major failure.

Documents / Resources

	<p><a href="#">J BURROWS MK300 Wireless Keyboard and Mouse</a> [pdf] Instruction Manual MK300 Wireless Keyboard and Mouse, MK300, Wireless Keyboard and Mouse</p>
---	---

[Manuals+.](#)