

IXTECH IX-THI02 Fingerprint Door Lock Set Instruction Manual

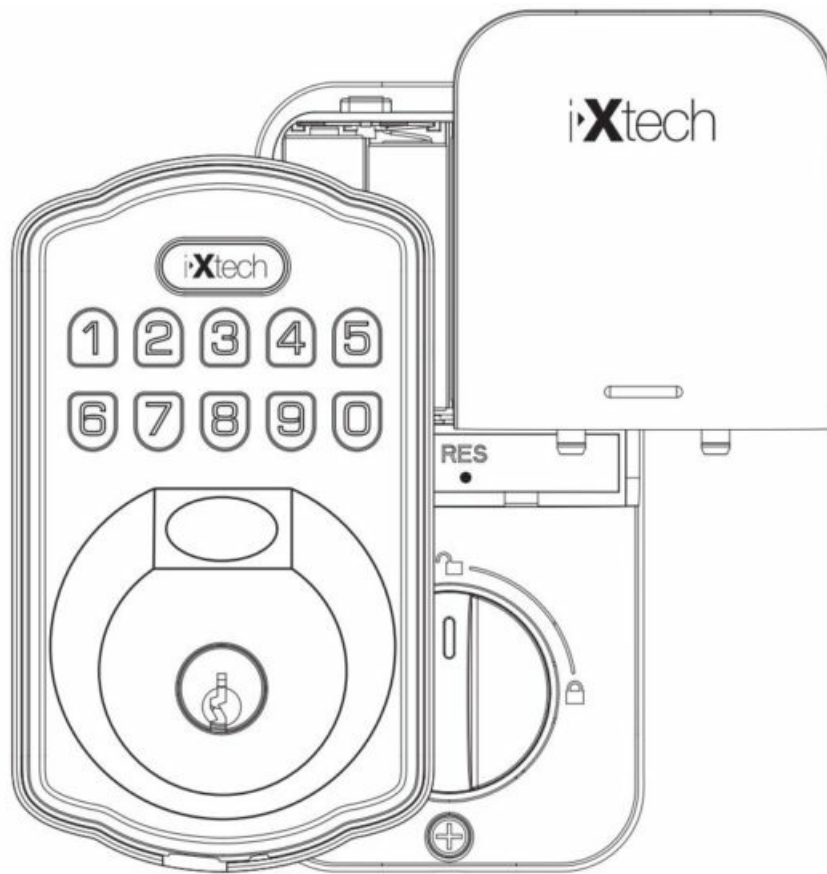
[Home](#) » [IXTECH](#) » IXTECH IX-THI02 Fingerprint Door Lock Set Instruction Manual 



Contents

- 1 IXTECH IX-THI02 Fingerprint Door Lock Set Instruction Manual
- 2 2. Choose faceplate
- 3 3. Install latch
- 4 4. Install handle set
- 5 1 . Prepare the door and check dimensions
- 6 2. Choose faceplate
- 7 3. Install latch and deadbolt
 - 7.1 4. Install exterior assembly
- 8 5 Install interior assembly
- 9 6. Detect left/right hand door installation
- 10 Information and safety warnings
- 11 Parts Illustration
- 12 Definitions
- 13 How to use?
- 14 Factory default settings
- 15 Troubleshooting
- 16 Quick set up
- 17 Documents / Resources
 - 17.1 References

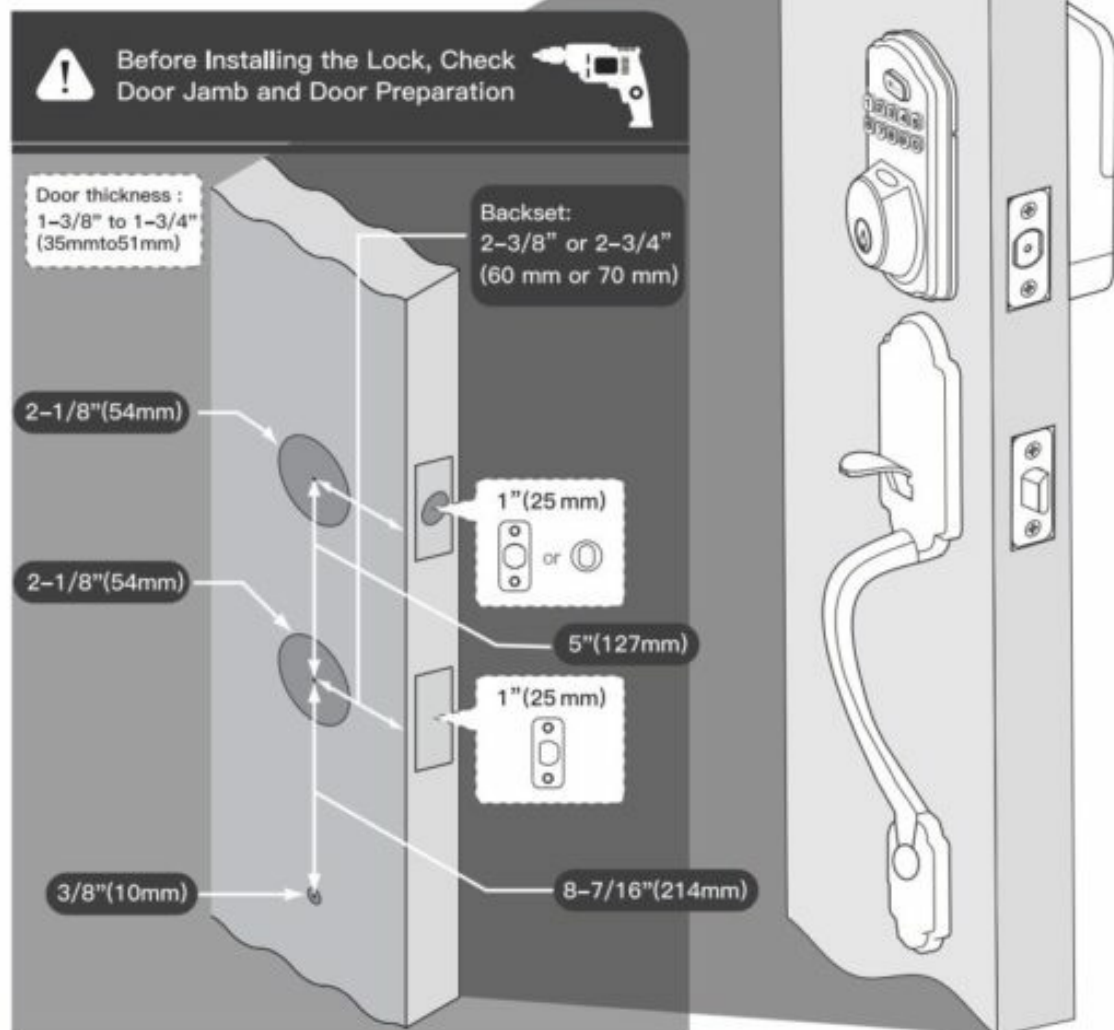
IXTECH IX-THI02 Fingerprint Door Lock Set Instruction Manual



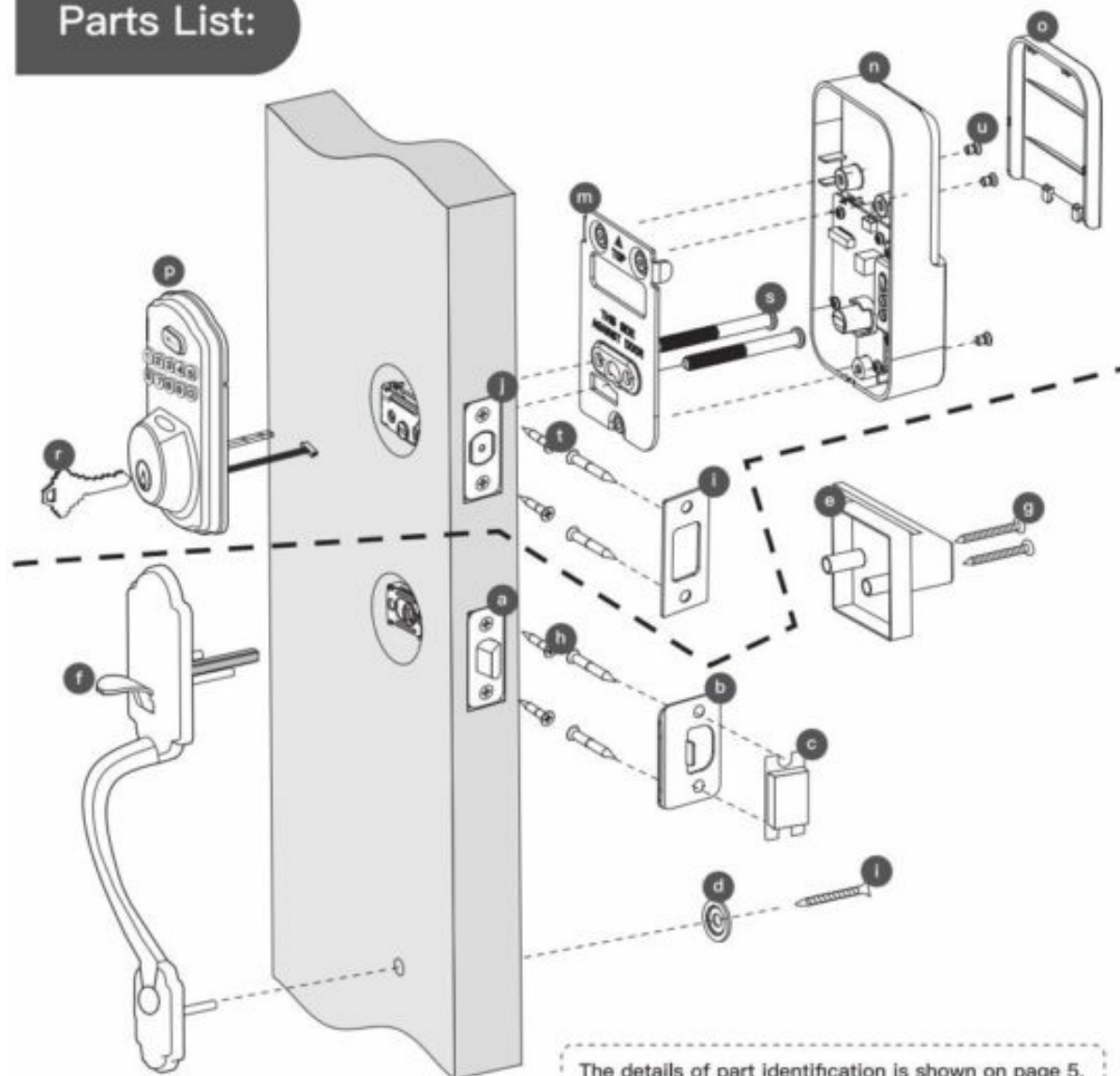
IX-THI02

iXtech

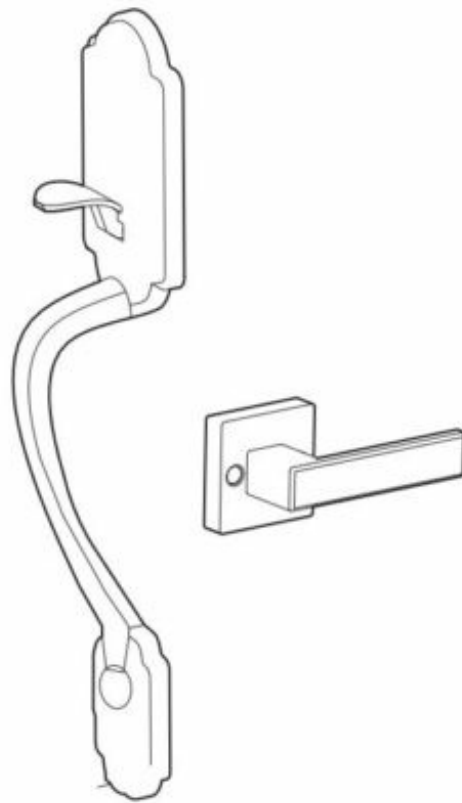
Installation Instructions

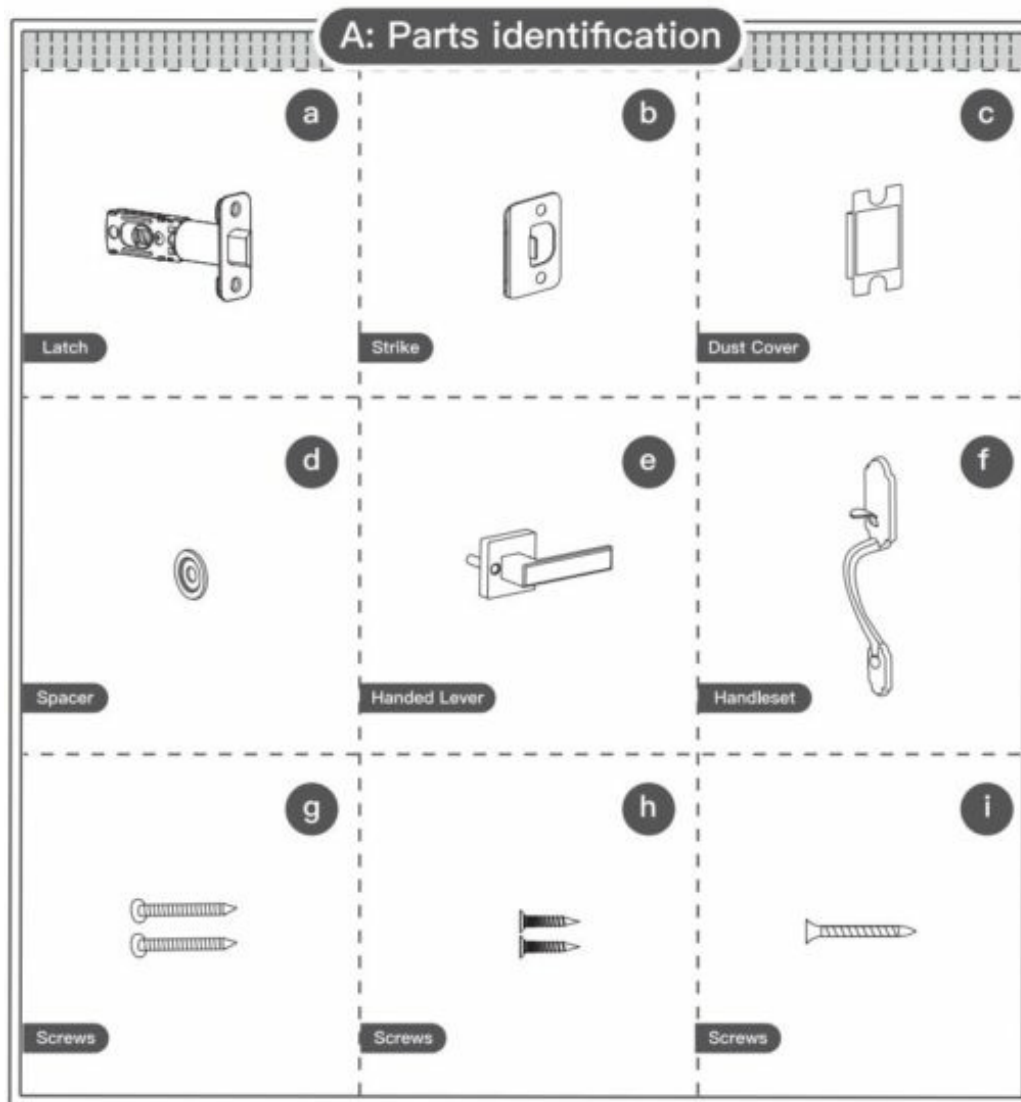


Parts List:

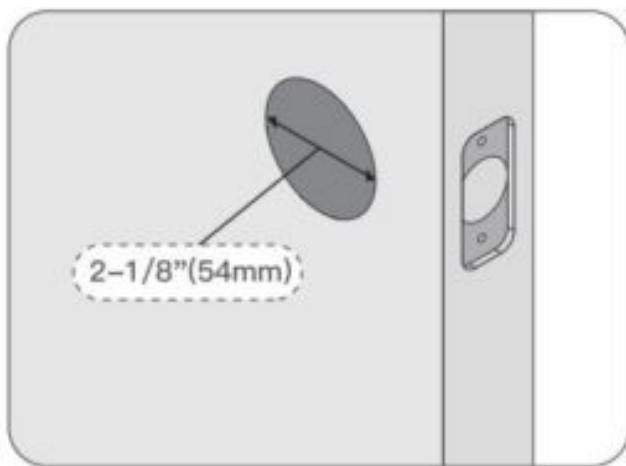


PART A

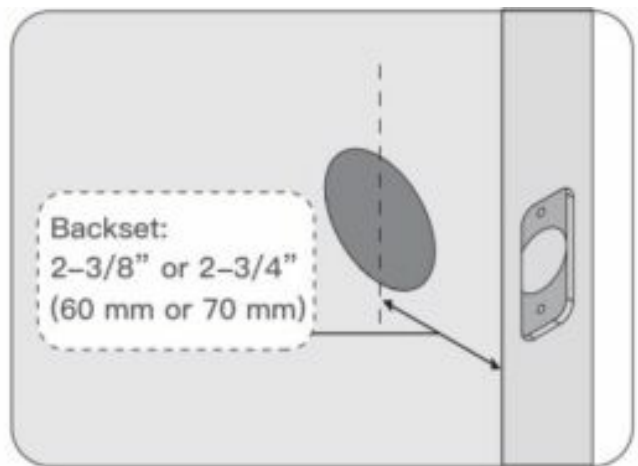




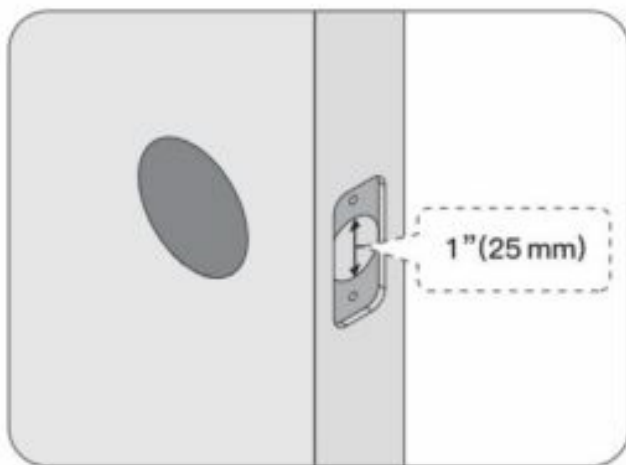
1. Prepare the door and check dimensions



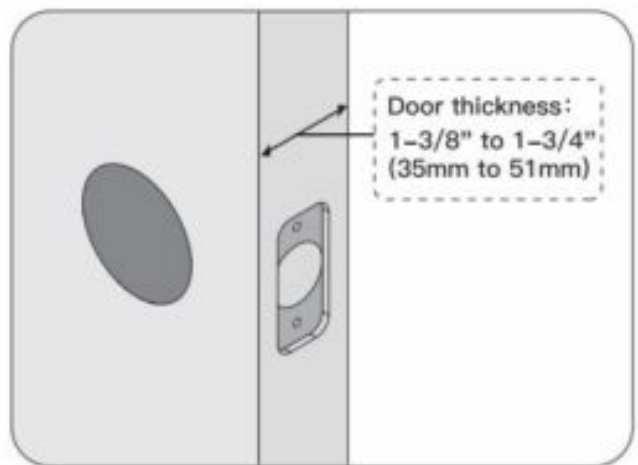
Measure to confirm that the hole in the door is 2-1/8"(54mm).



Measure to confirm that the backset is either 2-3/8" or 2-3/4" (60 or 70mm).

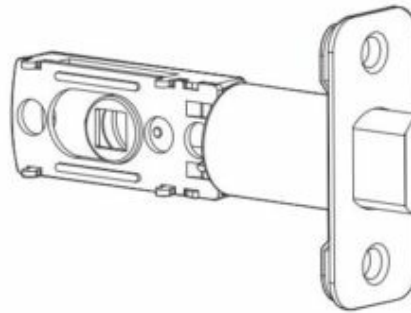


Measure to confirm that the hole in the door is 1"(25mm).



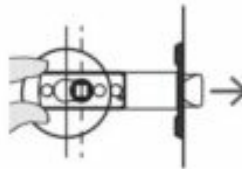
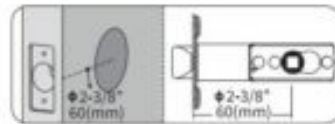
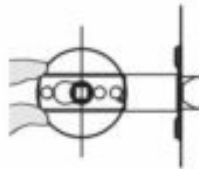
Measure to confirm that door thickness is between 1-3/8" and 1-3/4" (35 to 51mm)

2. Choose faceplate



a

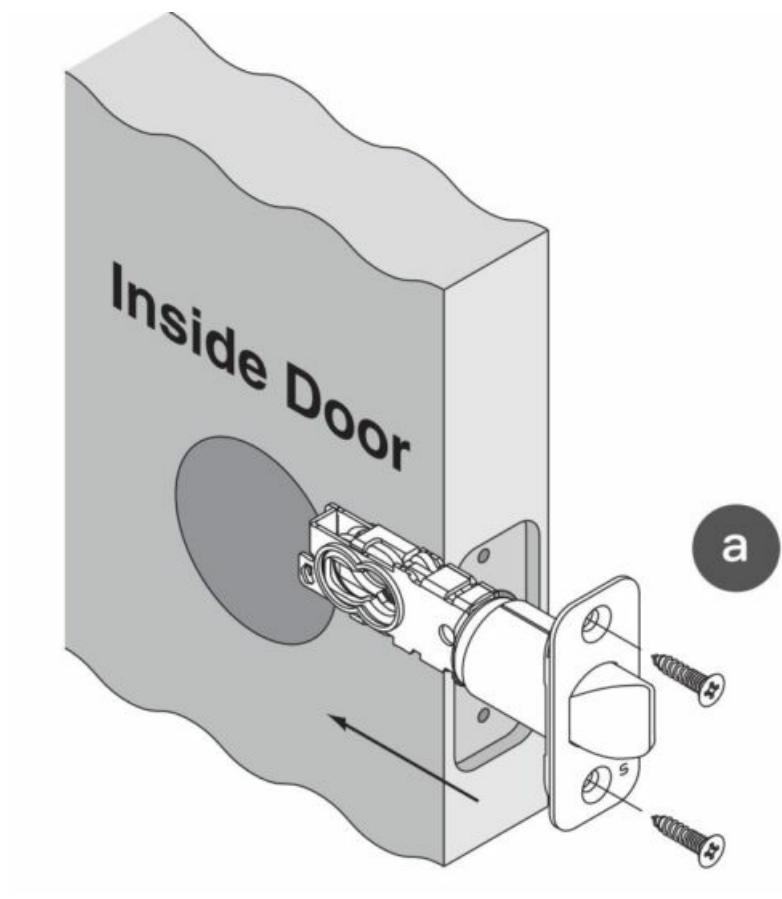
Is the slotted hole centered in the door hole?



Bolt ships with backset in 2-3/8" (60mm) position. If required, turn the bolt case and pull to extend to 2-3/4" (70mm) backset position.

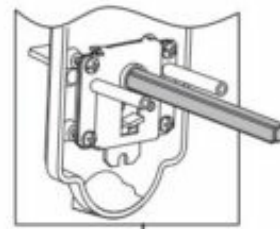
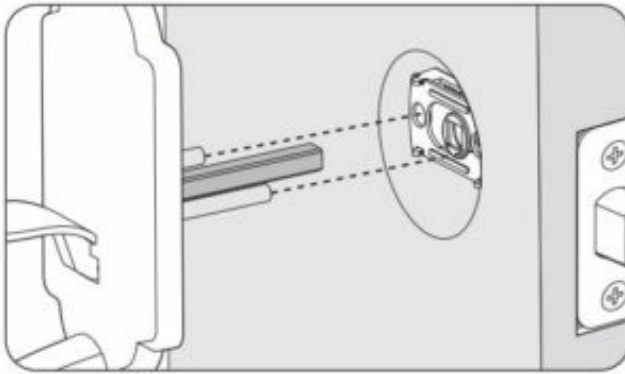


3. Install latch

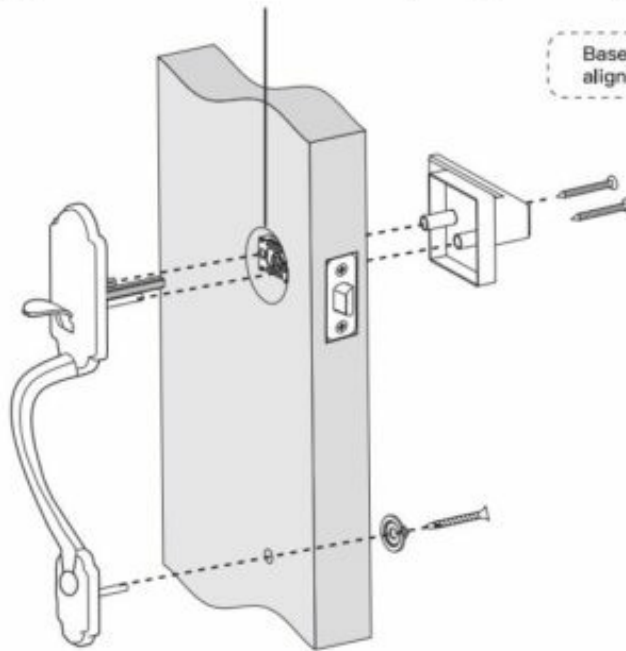


4. Install handle set

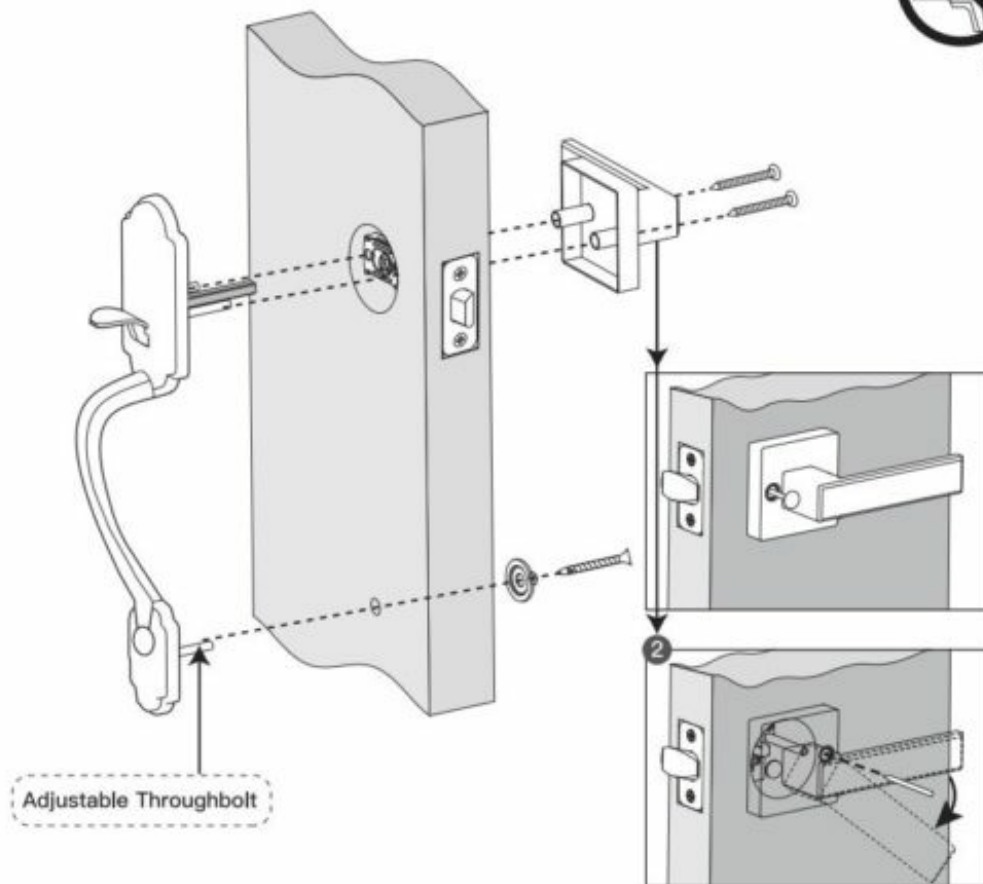
4. Install handleset



Base of spindle must be rotated
aligning to the hole.



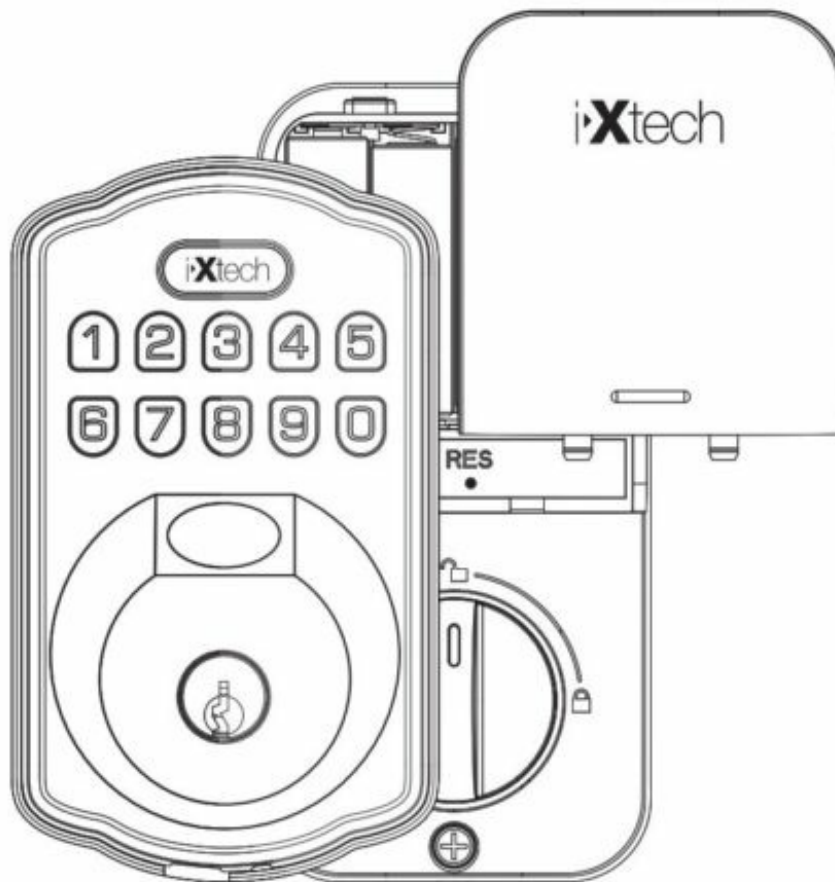
. Install lever



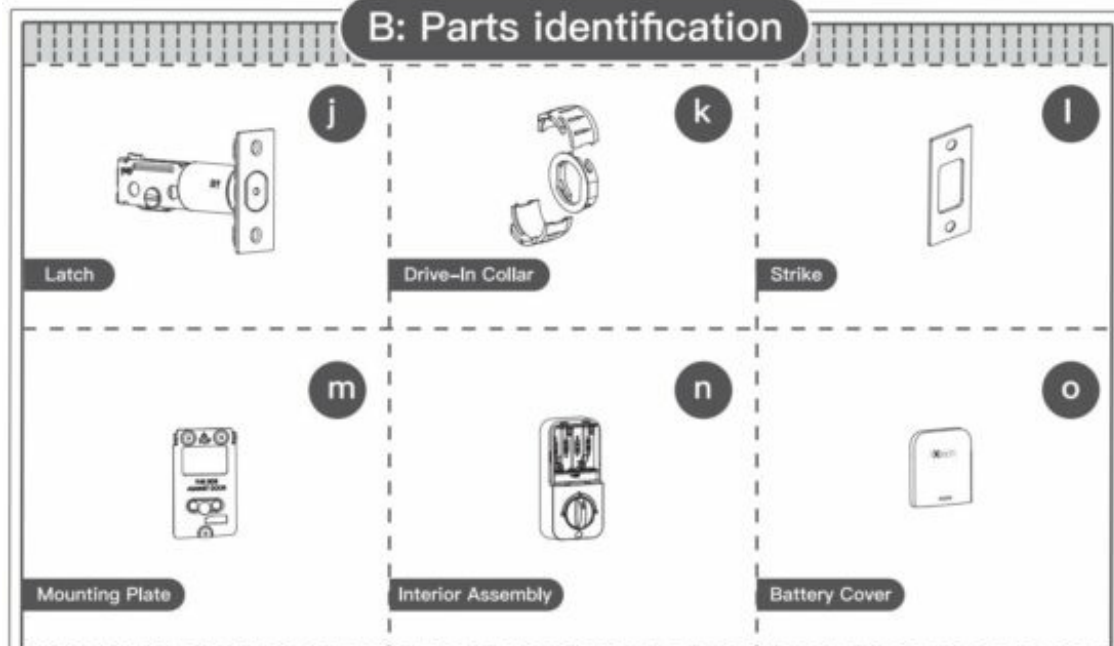
Test the lock after Installation.

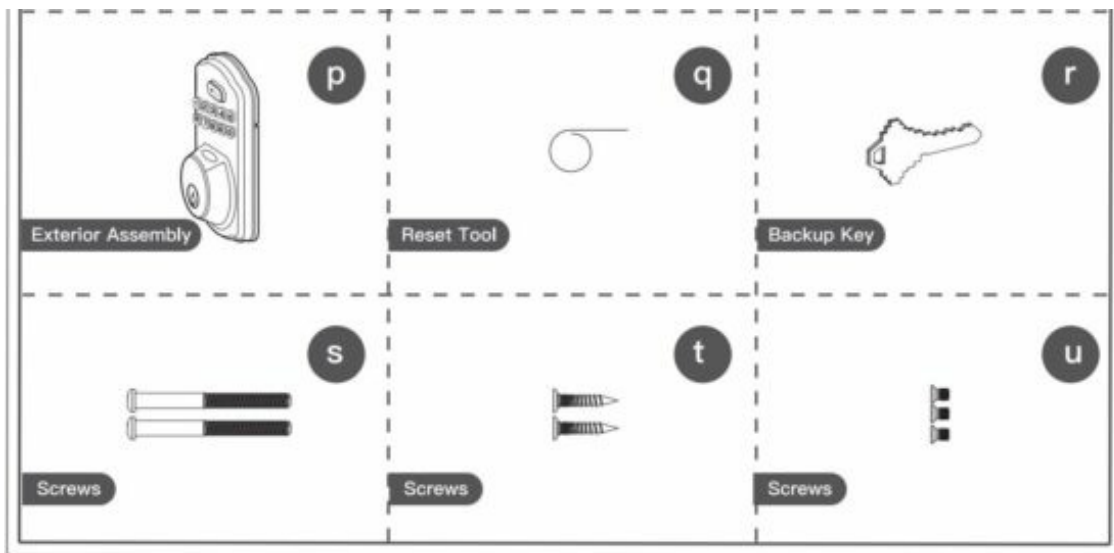
Keep the door opened, retract the latch by pressing knob from outside and pushing the lever from Inside of the door to test If the lock works smoothly.

PART B

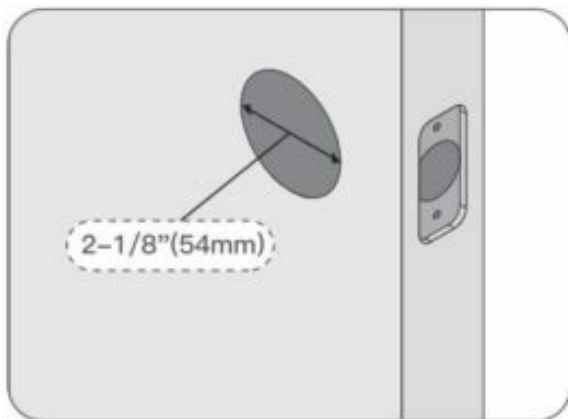


B: Parts identification

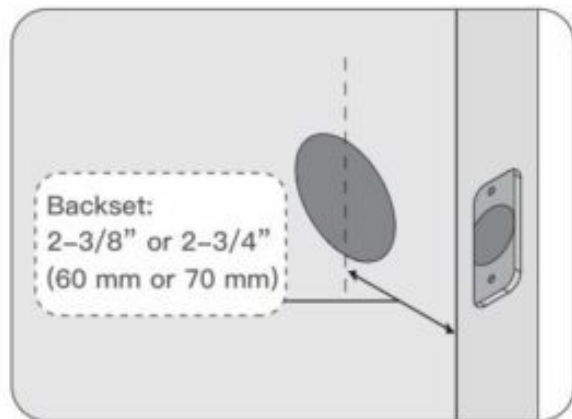




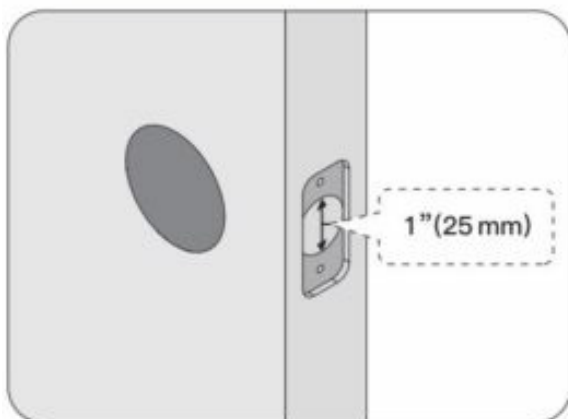
1 . Prepare the door and check dimensions



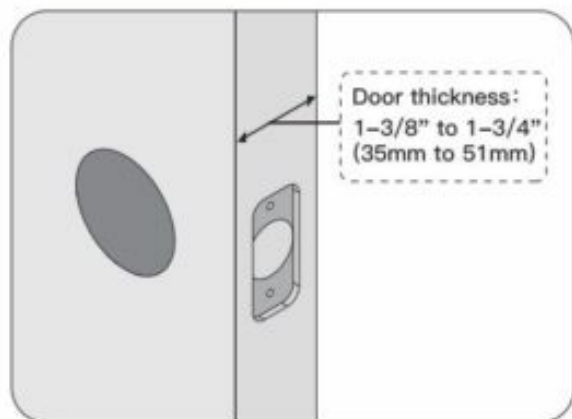
Measure to confirm that the hole in the door is 2-1/8" (54mm).



Measure to confirm that the backset is either 2-3/8" or 2-3/4" (60 or 70mm).

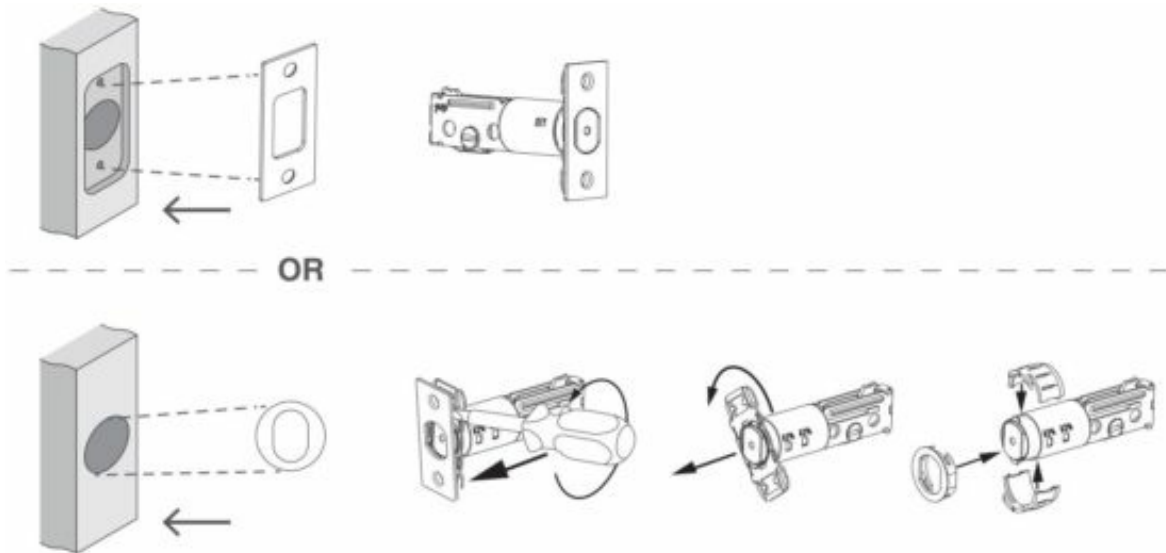


Measure to confirm that the hole in the door is 1" (25mm).

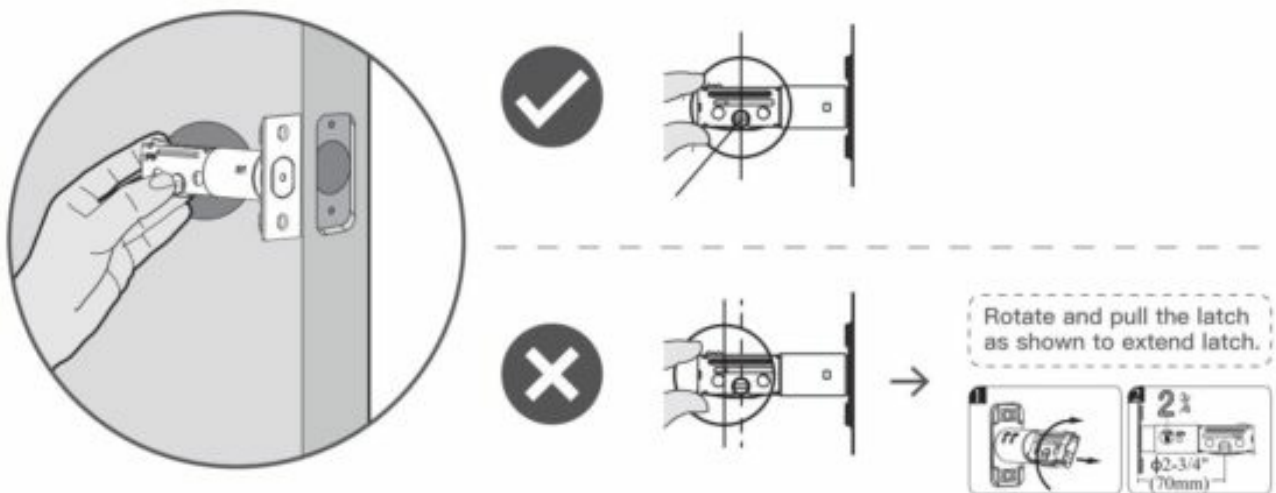


Measure to confirm that door thickness is between 1-3/8" and 1-3/4" (35 to 51mm).

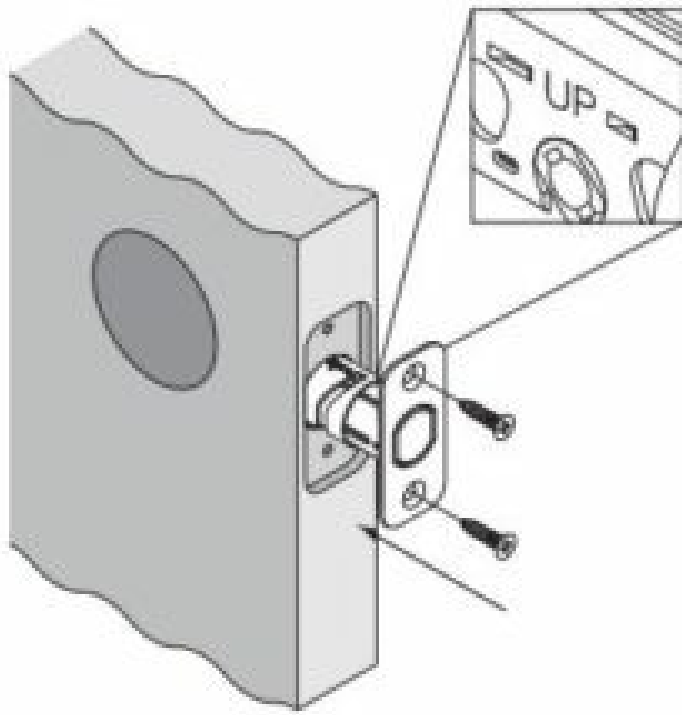
2. Choose faceplate



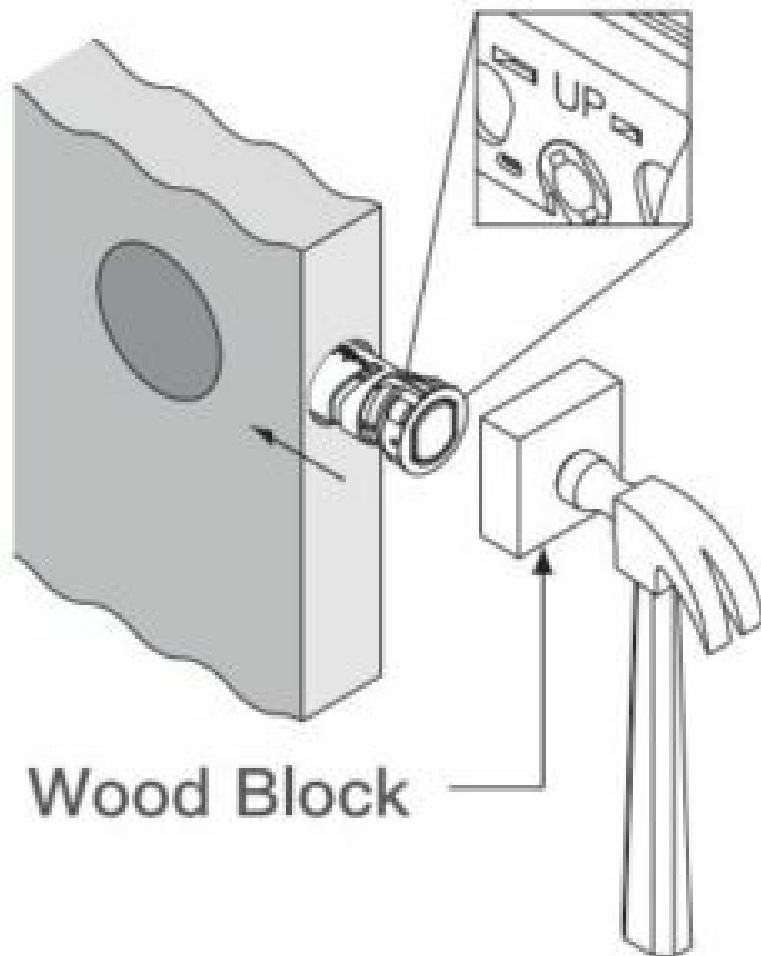
Is the slotted hole centered in the door hole ?



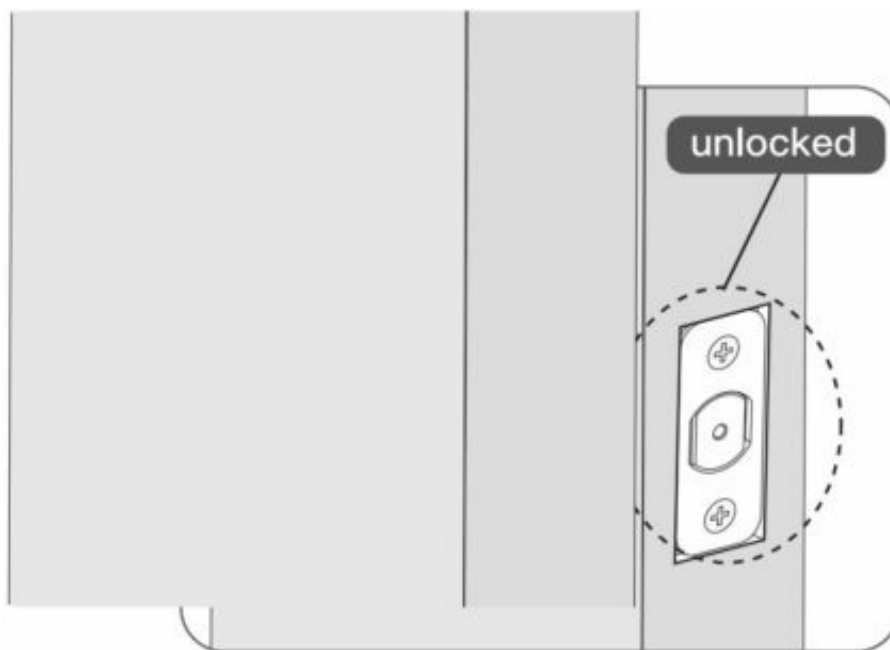
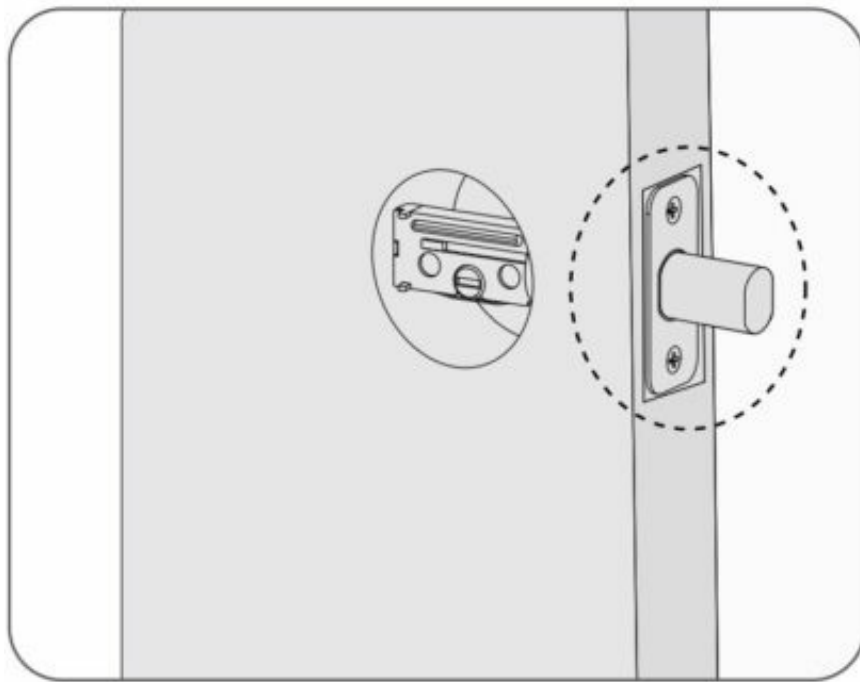
3. Install latch and deadbolt



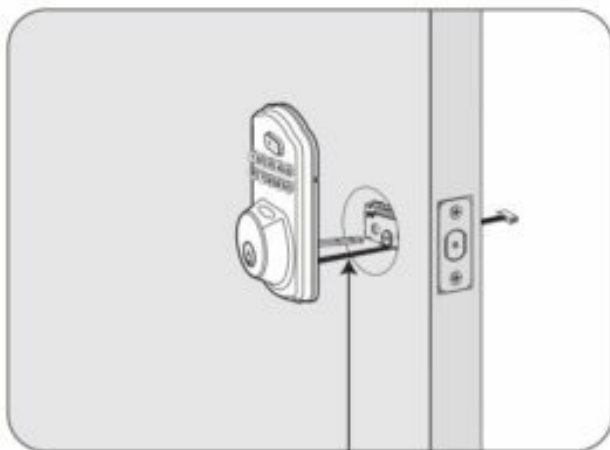
OR



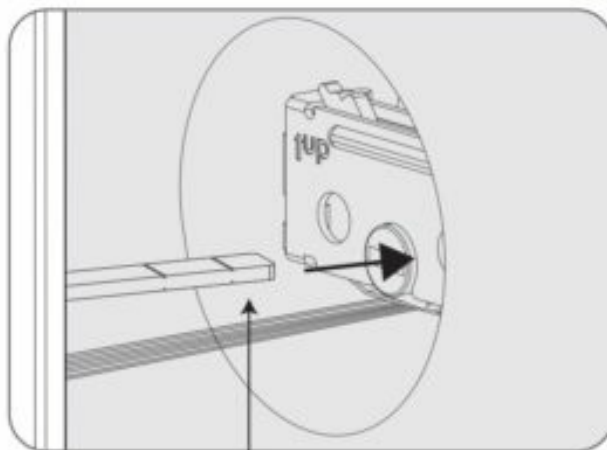
IMPORTANT: Keep the latch In unlocked position before installation.



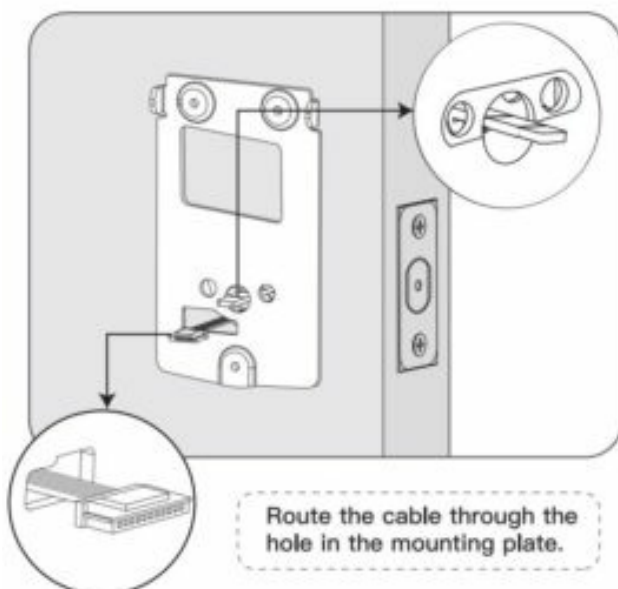
4. Install exterior assembly



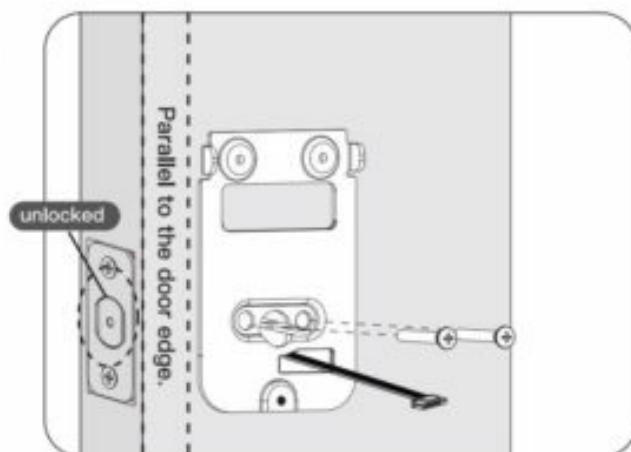
Route the cable below the latch.



IMPORTANT: Bolt must be in unlock position.
Note horizontal orientation of torque blade.



Route the cable through the hole in the mounting plate.

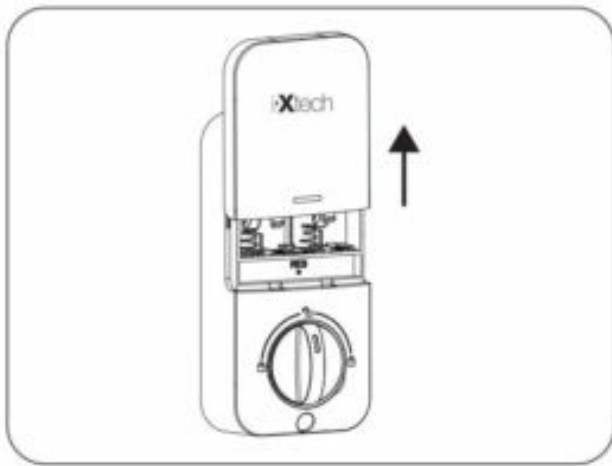


Secure the mounting plate with the supplied screws.

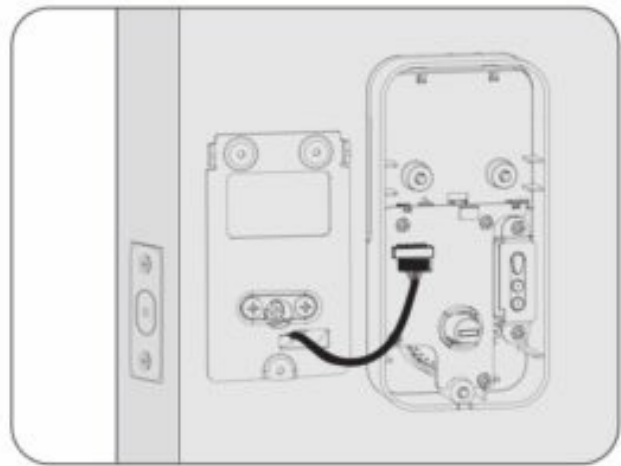
5 Install interior assembly



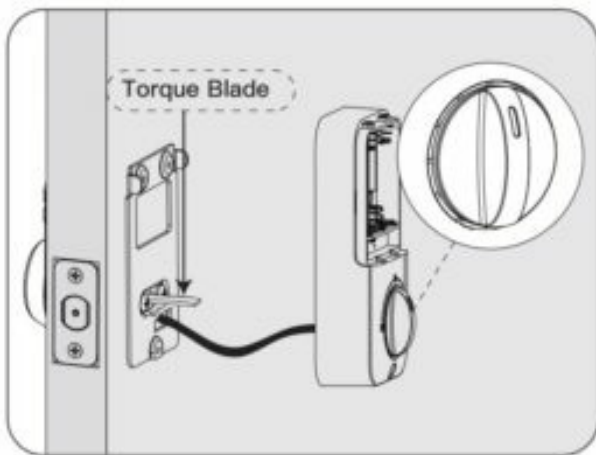
Do not load batteries until lock is completely installed.



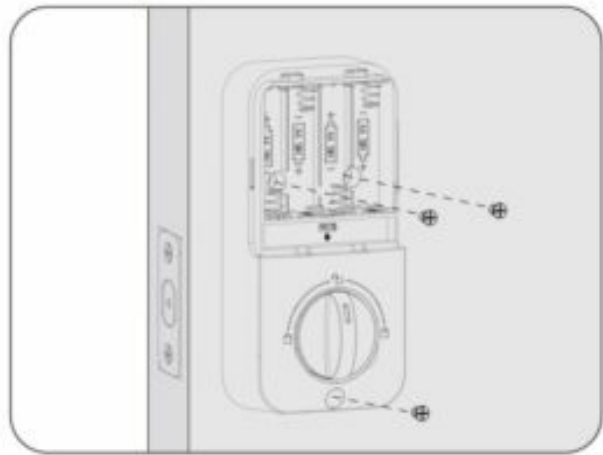
Remove the battery cover.



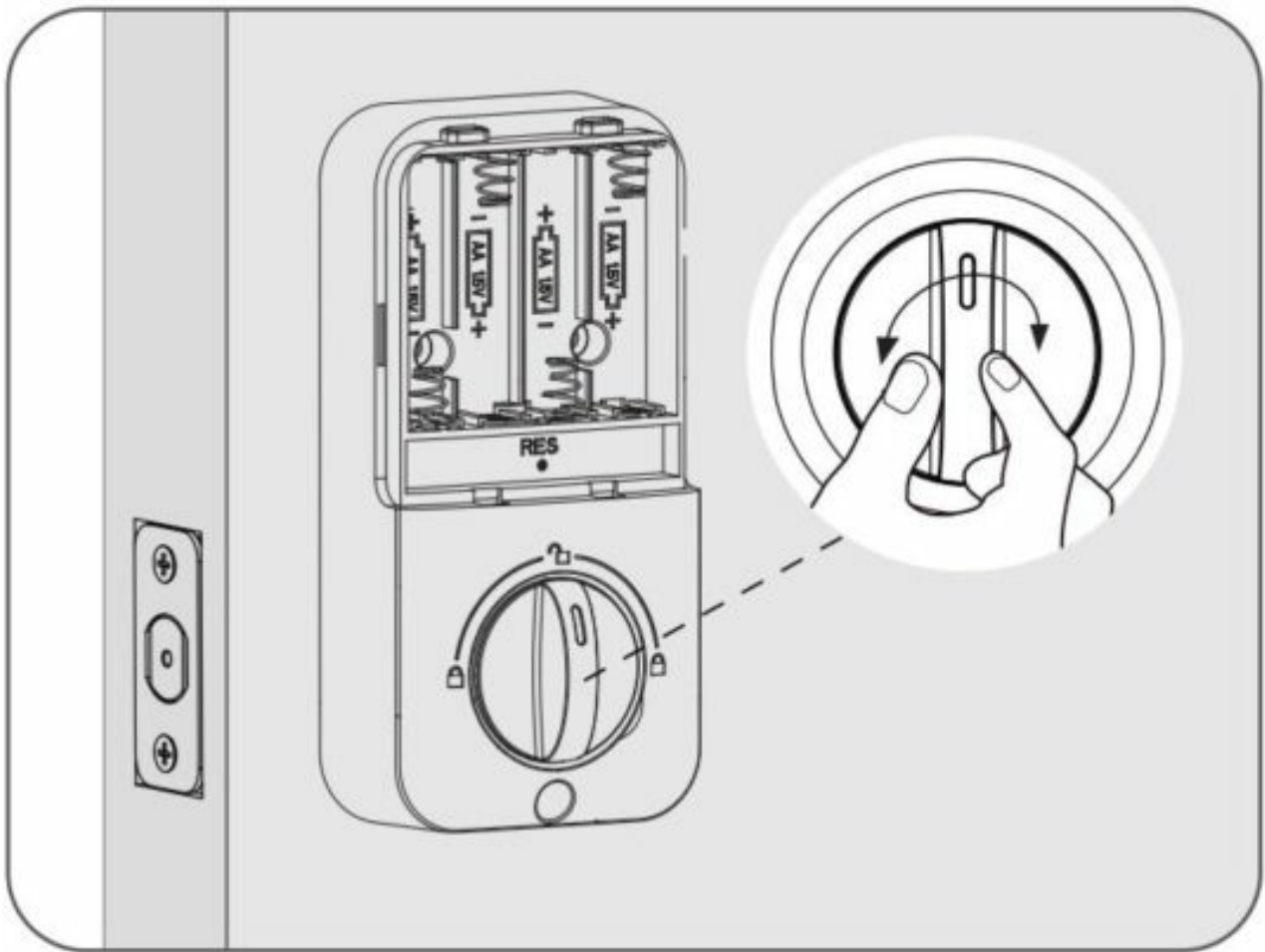
Connect the cable and ensure tight cable connection.



Rotate the Thumb turn in vertical position and insert the horizontal orientation of torque blade into the inside escutcheon.



Secure the interior assembly with the supplied screws.

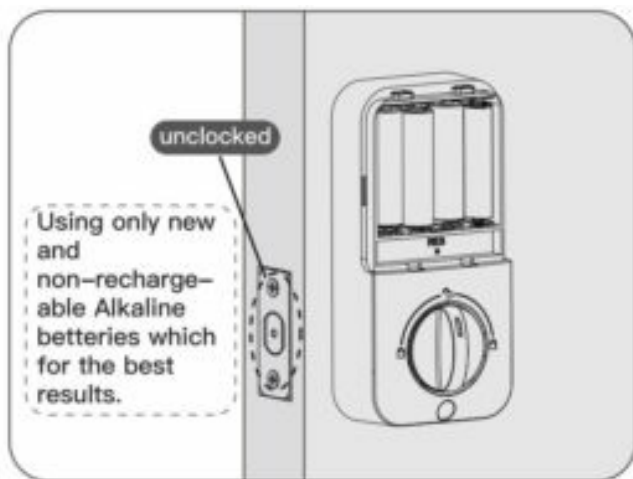


Test the lock by rotating the thumb turn to see if the bolt can be extended and retracted smoothly.

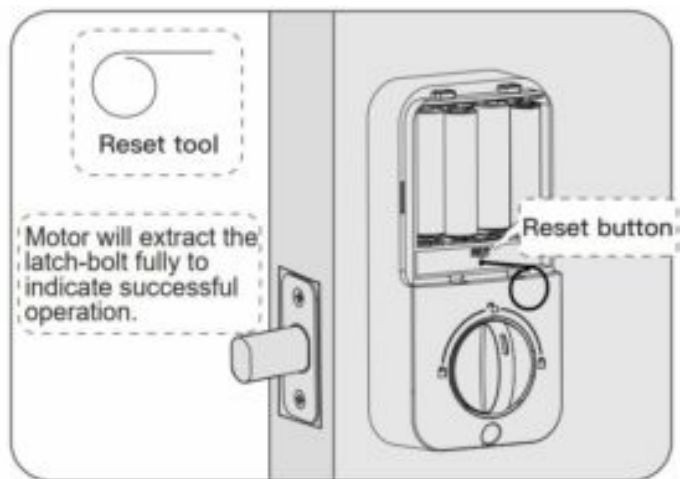
6. Detect left/right hand door installation



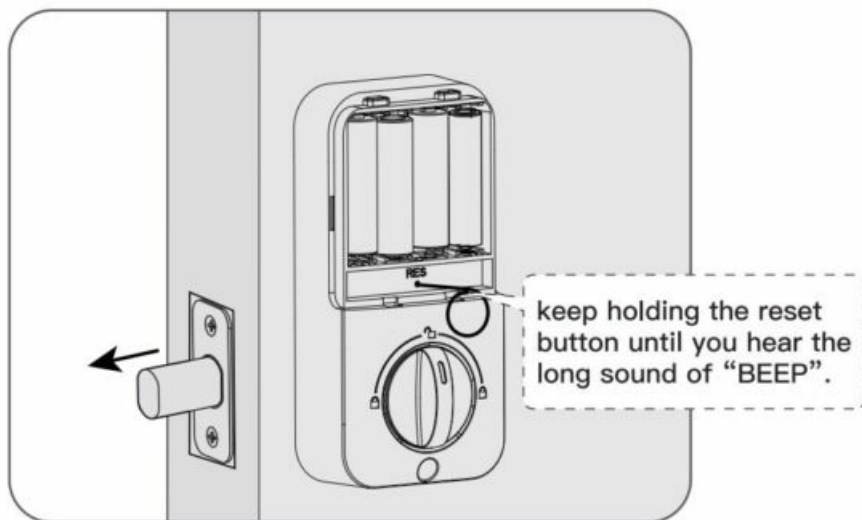
IMPORTANT: This step is required and crucial for the lock after installation!



While the door is open and unlock, load 4XAA batteries into the interior assembly.

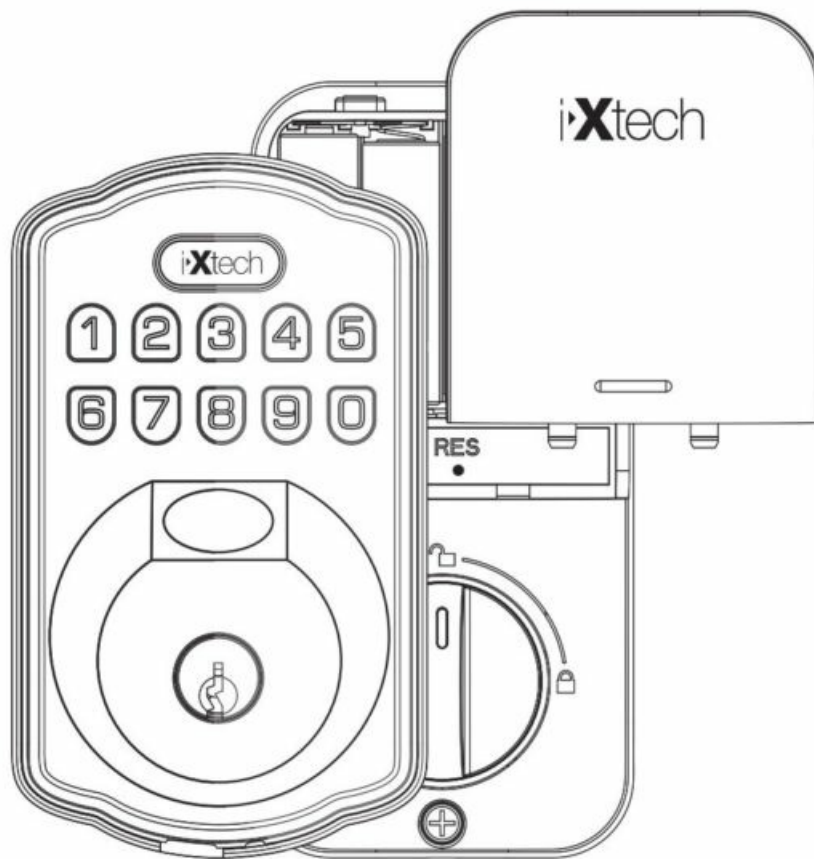


Press and hold the reset button on the interior assembly for 3 seconds, until you hear BEEP sound



Load the last battery and keep holding the reset button for 3 seconds, until you hear the long sound of "BEEP", the latch bolt will extend to learn the orientation of the door.

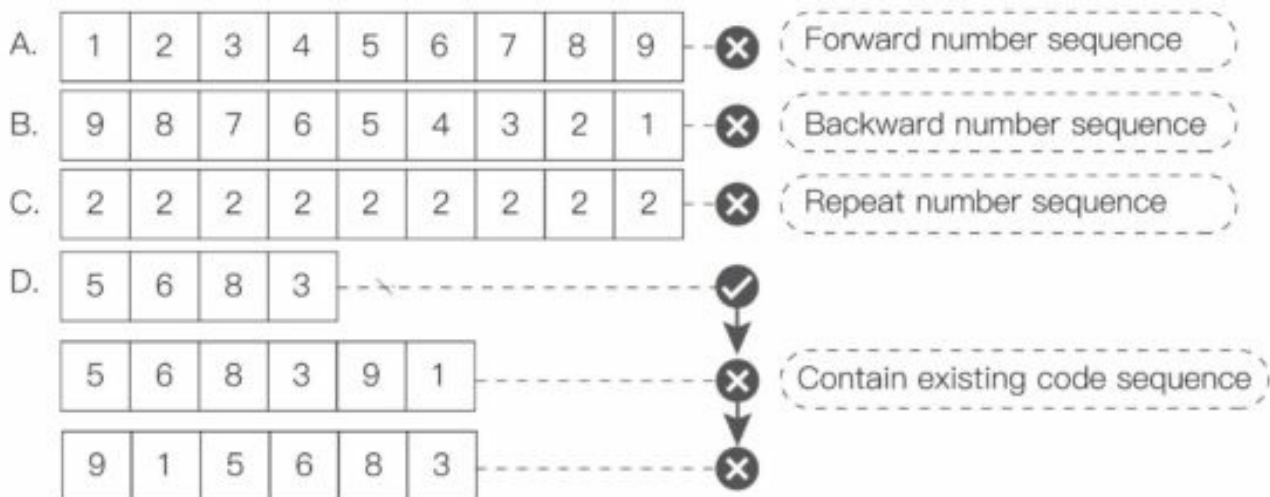
Programming Instructions



Information and safety warnings

Do not load batteries until lock is completely installed.

- Protect your user codes and master code.
 - Restrict access to your lock's interior assembly and routinely check your settings to ensure they have not been altered without your knowledge.
 - This lock set is designed to provide the highest standard of product quality and performance. Care should be taken to ensure a long lasting finish. When cleaning is required use a soft and damp cloth. Using lacquer thinner, caustic soaps, abrasive cleaners or polishes could damage the coating and result in tarnishing.
1. Master PIN Code (4M 0 digits): The default master pin code is "12345678", it's required that you change it to a code of your own before programming.
 2. User PIN Code (410 digits): A total of 20 user codes (and one temporary one—time user code) may be programmed.
 3. Both master and user PIN codes don't support the following combination of numbers.



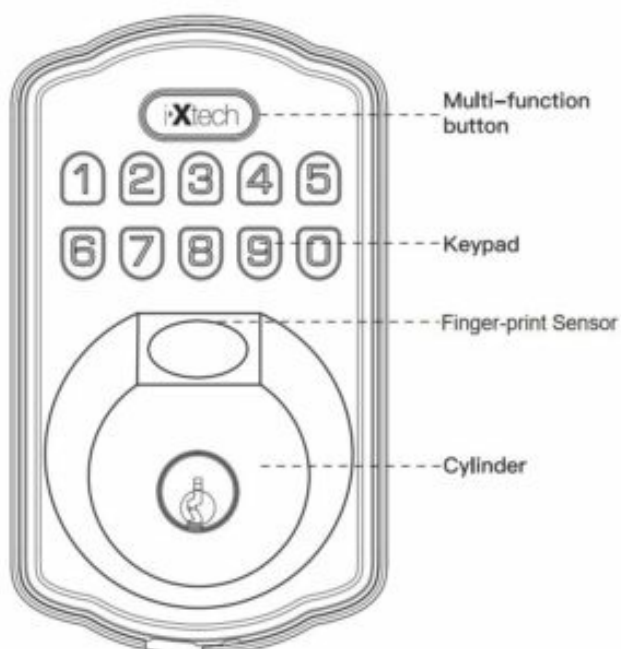
Parts Illustration



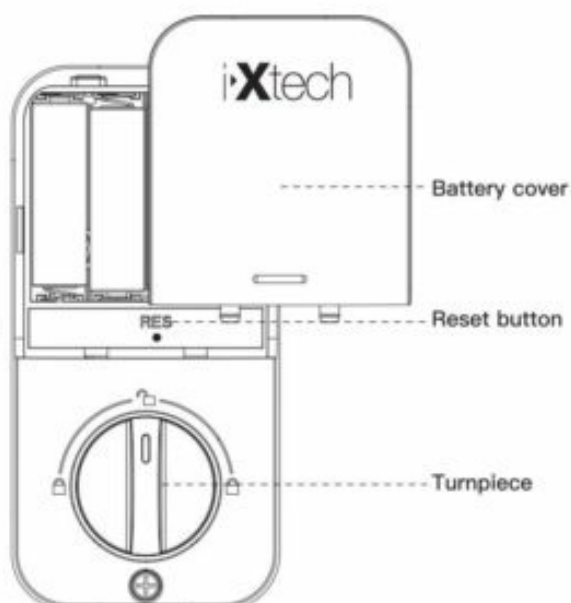
The default master code is 12345678. It's required that you change it to a code of your own before programming.

ITEM	SPECIFICATIONS	REMARKS
Battery (Using only new and non-rechagerable Alkaline batteries which for the best results.)	AA alkaline battery x4 (Operation voltage:4.6~6.0V)	Last up to one year (10 times open/close per day)

Exterior assembly



Interior assembly



Definitions

Master code:

Required for programming and feature settings, Master code can be used to unlock the door under vacation mode. The default master code needs to be changed before programming. (Property owner/ manager should keep this information confidential.)

Auto lock:

Automatically locks the deadbolt 30 seconds after unlocking. This feature is off by default. You can set the Auto lock delay between 10 and 99 seconds.

Wrong entry limit:

After 10 unsuccessful attempts at entering a valid PIN code, the unit will shut down for 3 minutes.

Silent mode:

The beep sounds when pressing keypad can be muted.
But you will still hear low battery and system alerts.

Vacation mode:

This is a security feature for you when you are leaving your home for vacation or long trip. Enabling vacation mode will restrict all user codes until master code is entered on keypad. If the lock is unlocked by thumb turn, the lock will sound an alarm.

One time user code:

This code can only be used once and is automatically deleted when used.

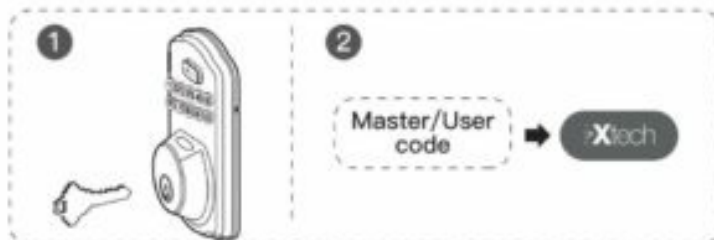
Unlock with fake code:

User can prevent PIN code exposure to strangers by entering random digits before or after PIN code.

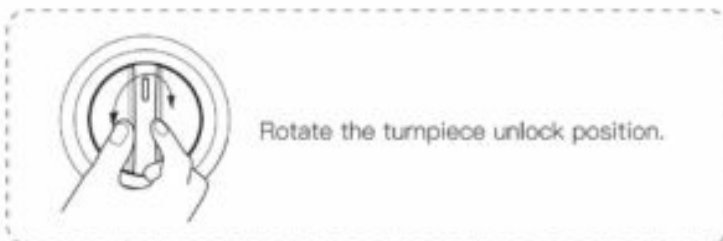


How to use?

Unlock the door from outside



Unlock the door from inside



Lock the door from outside

Auto re-lock mode

In auto re-lock mode, the bolt will extend out automatically in 30 seconds after unlocking.

Manual mode

Press any of the buttons on keypad for 2 seconds.



Lock the door from inside

Auto re-lock mode

In auto re-lock mode, the device will be automatically.

Manual mode

Rotate the turnpiece to lock position.



Factory default settings

SETTINGS	FACTORY DEFAULT
Master code	12345678
Auto lock	Disabled
Silent mode	Disabled
Wrong code entry limit	10 times
Shutdown time	3 mins
Vacation mode	Disabled

Restore factory default settings



This procedure will delete all user codes which associated with the lock.

1. Keep the door open and unlocked.
2. Press and hold the Reset-Button (e.g. with the Reset-Tool) for 3 seconds.
3. Beep sound and motor extract the Latch-bolt to indicate successful operation.

Troubleshooting

• The turnpiece can't rotate or operate the lock?

Remove and re-install the lock, making sure that the turnpiece is in vertical position.

• The lock can't be locked or unlocked by keypad?

Make sure that the codes are not disabled. If needed, restore the lock's default settings.

• The keypad doesn't respond when touched (no lights are visible and no beeping is heard)?

Make sure the cables are properly connected, and make sure the batteries are new installed correctly.

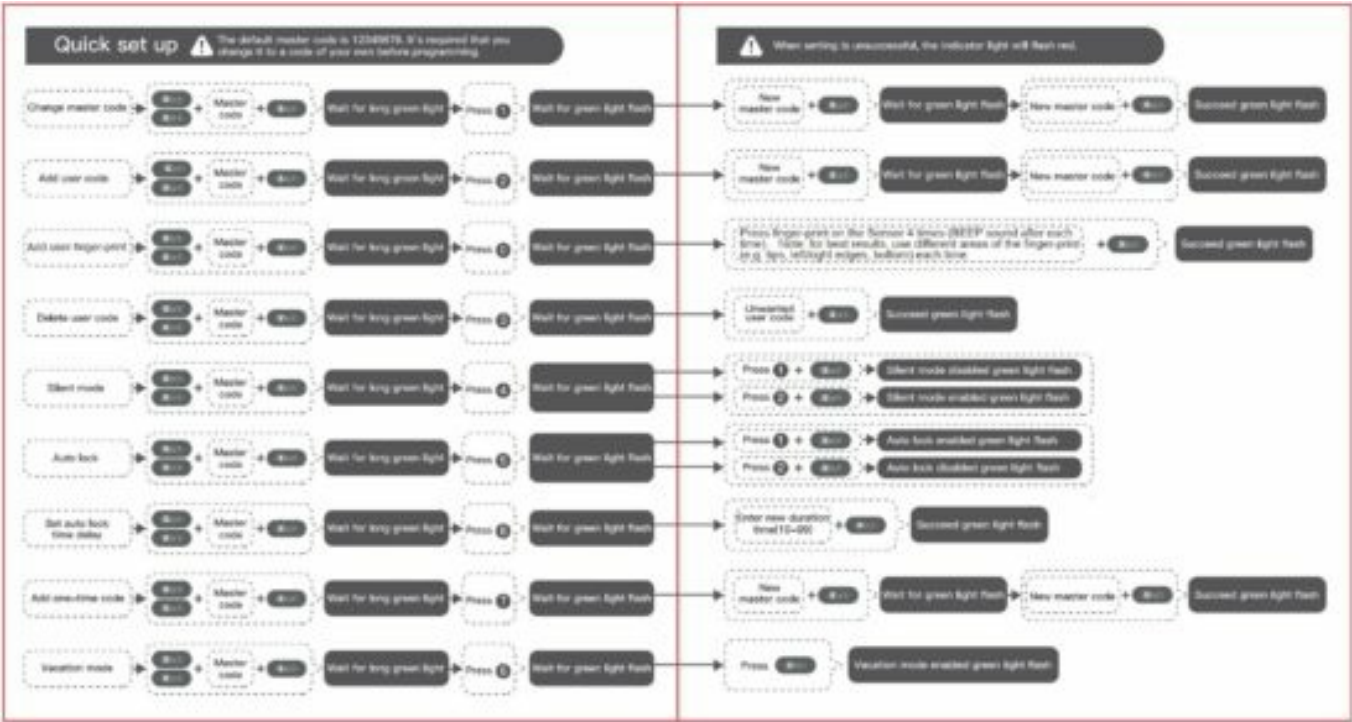
- After the installation of batteries, there is no response when you press any button and no beeps are heard.
- Check the cable connection and the polarity of the batteries. Also make sure the batteries are not dead.

Forget your master codes?

Perform a reset in order to erase all passcodes. Once the reset is complete, all passcodes will be erased and the master code will return to the default value(1 2345678).


Quick set up

The default master code is 12345678. It's required that you change it to a code of your own before programming.



Read More About This Manual & Download PDF:

Documents / Resources

	<p>IXTECH IX-THI02 Fingerprint Door Lock Set [pdf] Instruction Manual</p> <p>IX-THI02 Fingerprint Door Lock Set, IX-THI02, Fingerprint Door Lock Set, Door Lock Set, Lock Set</p>
---	---

References

- [User Manual](#)

[Manuals+](#), [Privacy Policy](#)