



iWILLINK UL-Listed 12 Port Patch Panel Installation Guide

[Home](#) » [iWILLINK](#) » iWILLINK UL-Listed 12 Port Patch Panel Installation Guide 

Contents

- [1 iWILLINK UL-Listed 12 Port Patch Panel](#)
- [2 Product Information](#)
- [3 Product Usage Instructions](#)
- [4 INSTALLATION INSTRUCTION](#)
- [5 Documents / Resources](#)
 - [5.1 References](#)
- [6 Related Posts](#)



iWILLINK UL-Listed 12 Port Patch Panel



Product Information

- The 12 Port Patch Panel is a device used for organizing and managing network cables. It is designed to be wall-mounted using the included snap-on 89D brackets and mounting screws. The patch panel allows for easy cable management and ensures efficient connectivity in your network setup.

Specifications

- **Port Count:** 12
- **Mounting:** Wall-mounted

Product Usage Instructions

Step 1: Unpack and Prepare

- Open the package and take out the patch panel.

Step 2: Mount the Patch Panel

- Attach the snap-on 89D brackets to the wall using the provided mounting screws. Ensure that the brackets are securely fastened.

Step 3: Prepare the Cable

- Cut the cable jacket to expose the wires. Remove the cable jacket completely.

Step 4: Separate and Arrange the Wires

- Separate the individual wires and arrange them neatly.

Step 5: Connect the Wires

- Push each wire into the appropriate IDC (Insulation Displacement Connector) slot according to the T568A or T568B color code. Ensure that each wire is fully inserted.

Step 6: Secure and Trim the Wires

- Use an impact tool to firmly press down on the wires, ensuring a secure connection. Cut off any excess wire length using wire cutters.

Step 7: Check the Connections

- Double-check all the wire connections to ensure they are properly seated in the IDC slots.

Step 8: Cable Management

- Use the provided cable ties to organize and manage the cables for a clean and organized setup.

Step 9: Finalize Installation

- The installed patch panel should now be securely fastened to the 89D brackets. Ensure that all connections are secure and tidy. Your installation is now complete.

FAQ

Q: Can I use this patch panel for both T568A and T568B wiring standards?

- **A:** Yes, the patch panel supports both T568A and T568B color coding standards. You can choose the appropriate standard based on your network requirements.

Q: Are the mounting screws included in the package?

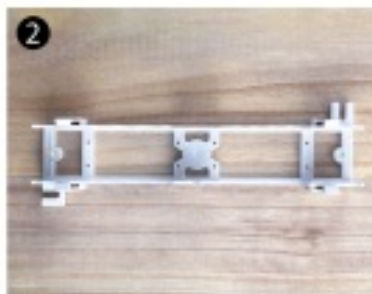
- **A:** Yes, the package includes the necessary snap-on 89D brackets and mounting screws for wall installation.

Q: Can I use this patch panel for outdoor installations?

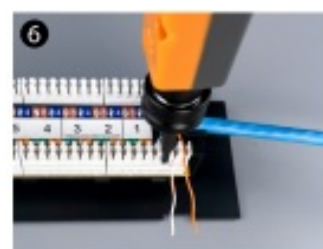
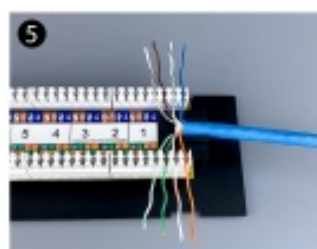
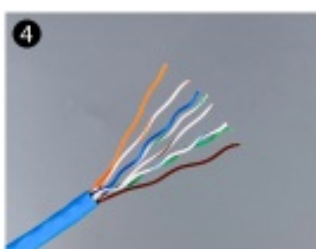
- **A:** No, this patch panel is designed for indoor use only. It is not suitable for outdoor installations as it is not weatherproof.

INSTALLATION INSTRUCTION

1. Open the package, take out the patch panel.
2. Wall mount the panel with the included snap-on 89D brackets and mounting screws.
3. Cut the cable jacket, remove the cable jacket.

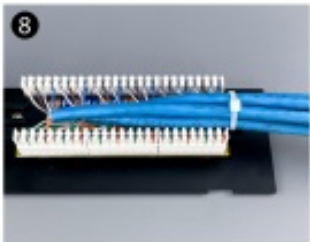
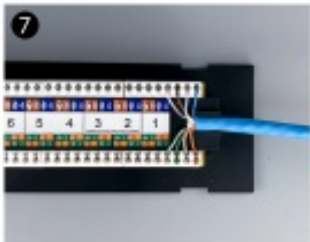


4. Separate the wires, arrange the wires.
5. Push the wires into the IDC according to T568A/T568B color code.
6. Impact and fix the wires, cut off the excess wires.



7. Check the wires.

- 8. Use the cable ties for easy cable management.
- 9. The installed patch panel is fastened to the 89D brackets, the installation is complete.



Documents / Resources

| | |
|--|---|
| | <p>iWILLINK UL-Listed 12 Port Patch Panel [pdf] Installation Guide</p> <p>UL-Listed 12 Port Patch Panel, UL-Listed, 12 Port Patch Panel, Port Patch Panel, Patch Panel, Panel</p> |
|--|---|

References

- [User Manual](#)