



[Home](#) » [iWFCam](#) » **iWFCam IP Camera App User Guide** 



Contents [[hide](#)]

- [1 Download the APP](#)
- [2 Set up remote Wi-Fi](#)
- [3 Frequently Asked Questions](#)
- [4 Documents / Resources](#)
 - [4.1 References](#)

Download the APP

Download iWFCam from App Store for IOS devices or from Google's Play Store for Android devices. For easy installation, please scan the QR code to download and install iWFCam. If your android device cannot access Google's Play Store, please scan this QR code and select download APK directly.



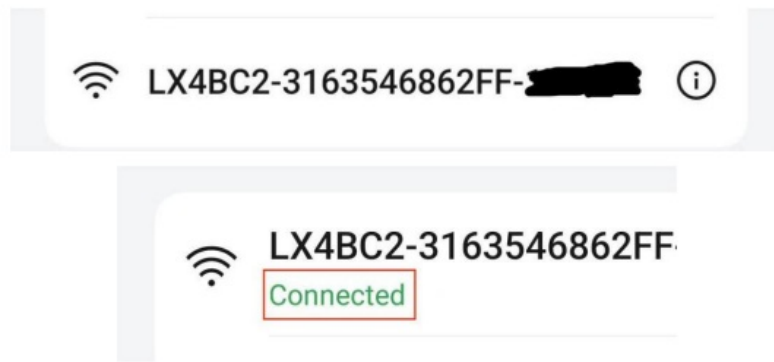
Download the QR code

<http://www.iWFCam.com/app/iWFCam.html>

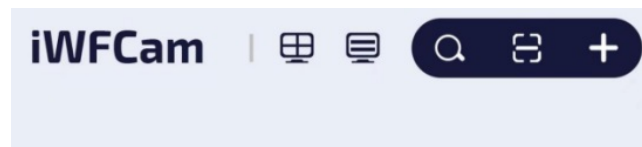
Turn on the camera ON/OFF Switch to ON

Then turn on the phone settings  Open Wi-Fi connection

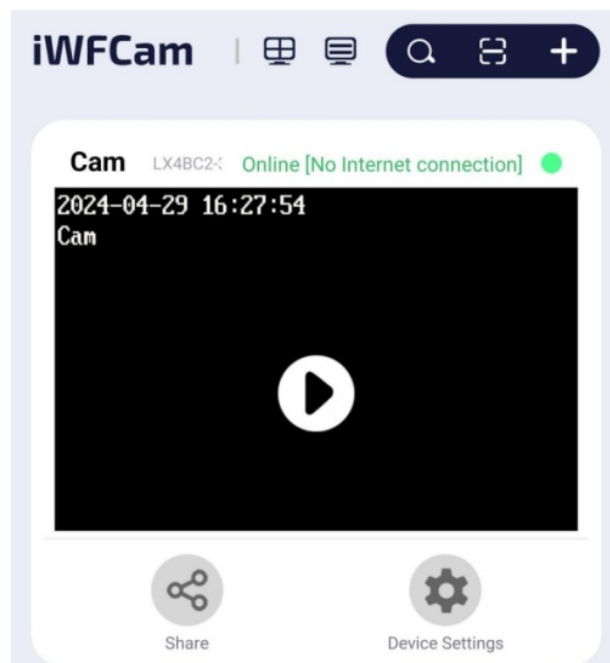
connection



Open the Camera App  iWFCam



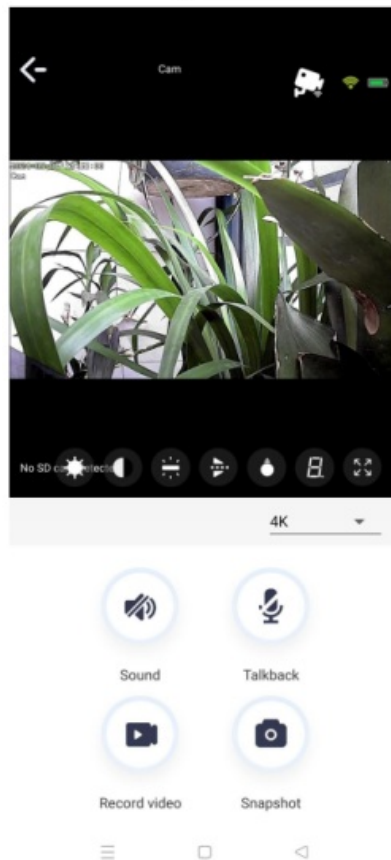
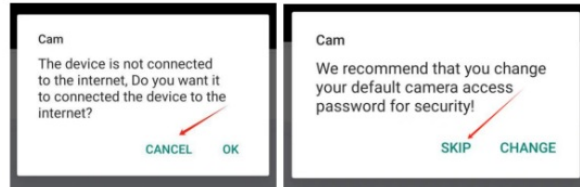
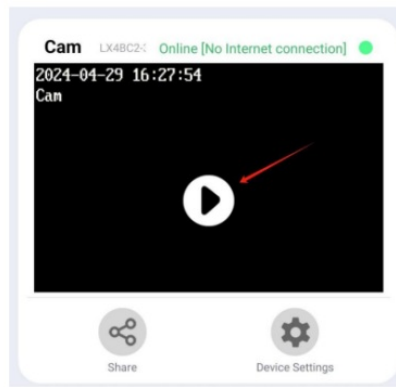
The app will automatically find the camera; Figure



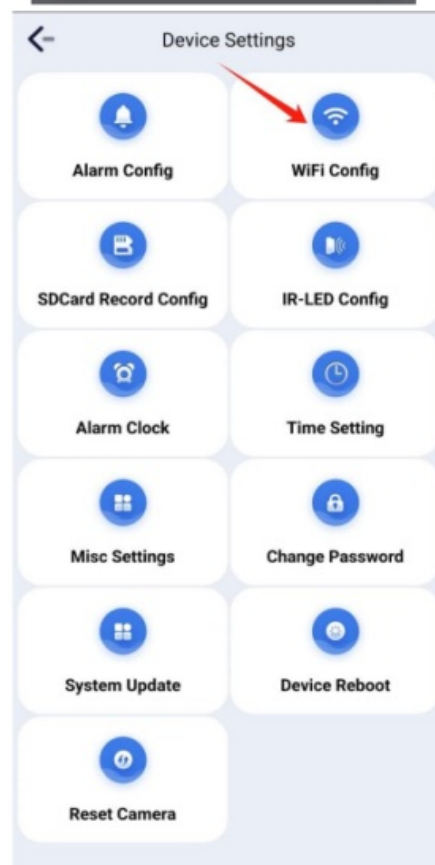
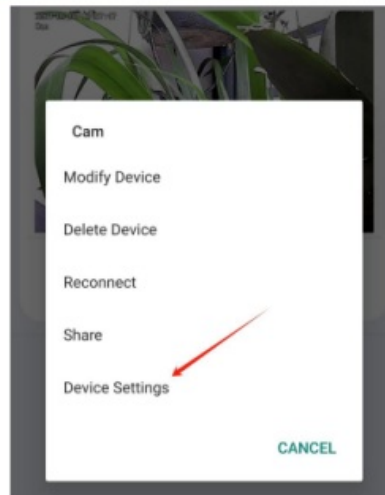
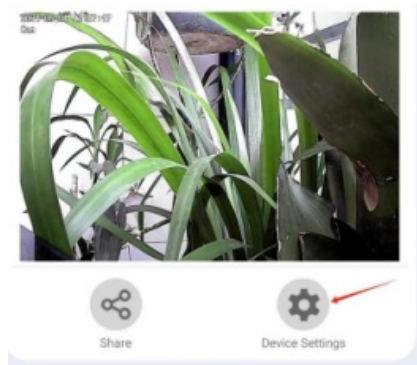
If the camera is not automatically found, click to find the camera

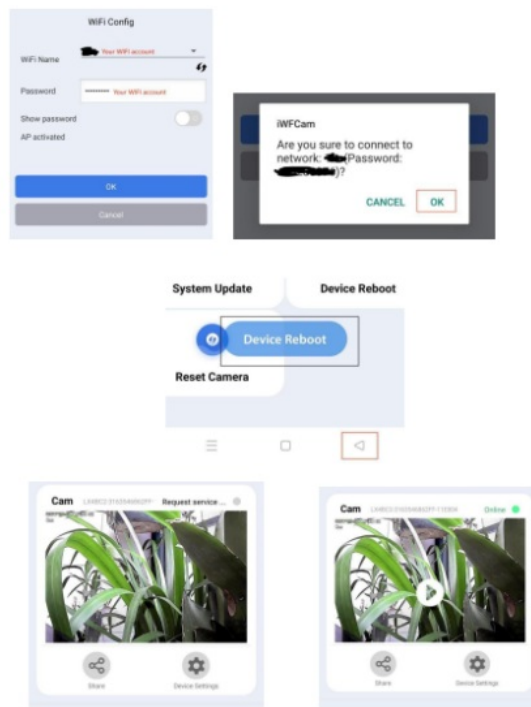


Watch the camera screen as shown in the Picture



Set up remote Wi-Fi





At this point, the camera can now be viewed remotely!

*Tips

What are preset positions?

Preset positions are IP camera's memorized P/T positions. Once you set a preset position, you do not need to pan the camera to your preferred position. You simply press the preset button that corresponds to the preset you want to see and the camera will move to that position automatically.


Frequently Asked Questions

, and its default password is N/A, which means you just leave it blank. If you forget your username or password, you can reset the camera to factory settings to get the default username and password. " image-3="" headline-4="p" question-4="4. Why can't I get live video in web browser? " answer-4="Please download and install plug-in before getting live video. If there is still no live video, check whether or not the plug-in is enabled in your web browser? " image-4="" headline-5="p" question-5="5. How can I reset the camera to factory settings? " answer-5="Please long press the reset button under or on the camera for about 3 to 5 seconds until the camera's indicator is off. Please make sure the power supply is connected when you are doing it. " image-5="" headline-6="p" question-6="6. Why can't the camera record videos? " answer-6="Please make sure you are running the web browser as an administrator. Right click the web browser and select Run as Administrator to run as an administrator. For android app, please insert a TF card into

the camera before recording? " image-6="" headline-7="p" question-7="7. Why is the image blurry? " answer-7="Remove the protective film on the lens and rotate the lens of the camera to get a clear image. " image-7="" headline-8="p" question-8="8. How can I improve it when the live video appears in black screen but showing no image? " answer-8="Triple click the app name on the title bar of live video page to switch to software decode mode. By default the app decodes images through hardware decoder for its high efficiency of decoding. Users can switch between the state of software decode mode and hardware decode mode by triple-clicking the app name. " image-8="" headline-9="p" question-9="9. Why is there no sound when recording? " answer-9="The Z16 camera does not have a built-in speaker or recording function. This version is a silent version and does not have the sound recording function. It is a home security monitoring device. " image-9="" count="10" html="true" css_class=""]





Documents / Resources

	iWFCam IP Camera App [pdf] User Guide IP Camera App, Camera App
---	--

References

- [User Manual](#)

 iWFCam  Camera App, IP Camera App,

Leave a comment

Your email address will not be published. Required fields are marked *

Comment *

Name

Email

Website

☐ Save my name, email, and website in this browser for the next time I comment.

Post Comment

Search:

e.g. whirlpool wrf535swhz

Search

[Manuals+](#) | [Upload](#) | [Deep Search](#) | [Privacy Policy](#) | [@manuals.plus](#) | [YouTube](#)

This website is an independent publication and is neither affiliated with nor endorsed by any of the trademark owners. The "Bluetooth®" word mark and logos are registered trademarks owned by Bluetooth SIG, Inc. The "Wi-Fi®" word mark and logos are registered trademarks owned by the Wi-Fi Alliance. Any use of these marks on this website does not imply any affiliation with or endorsement.