




# iVIEW 1786AIO All-In-One Laptop Computer User Manual

[Home](#) » [iVIEW](#) » iVIEW 1786AIO All-In-One Laptop Computer User Manual 

## Contents

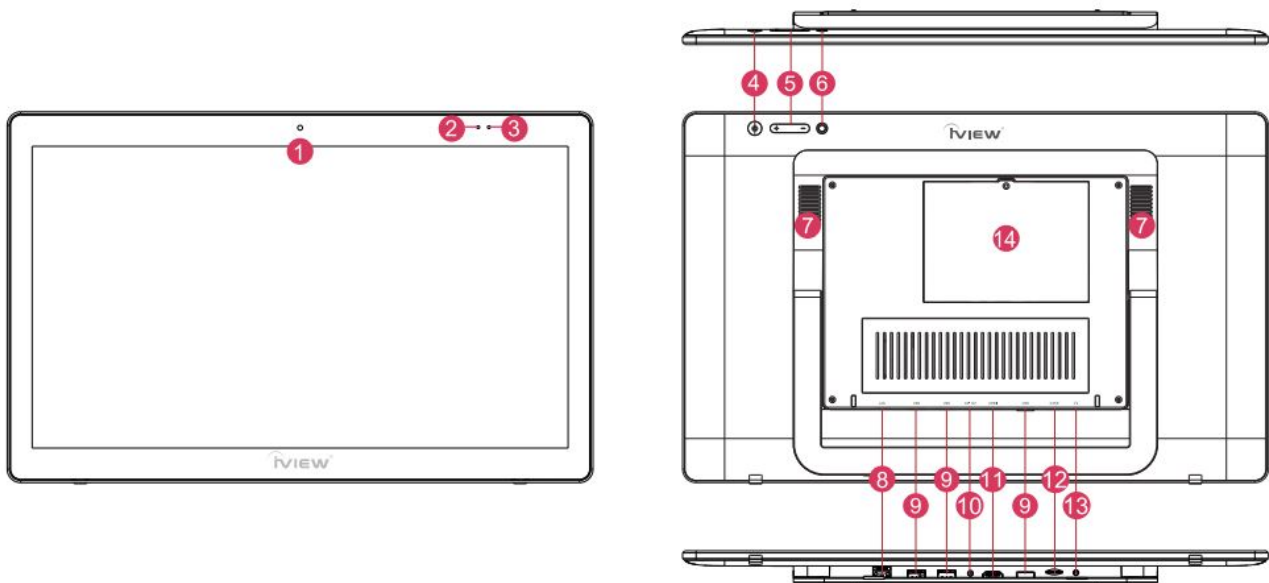
- [1 iVIEW 1786AIO All-In-One Laptop Computer](#)
- [2 Product Overview](#)
- [3 Keyboard & Mouse Setup](#)
- [4 System Setup](#)
- [5 Desktop Functions](#)
- [6 Additional Functions](#)
- [7 Storage Expansion](#)
- [8 Product Features](#)
- [9 Accessories](#)
- [10 FCC Warning Statement](#)
- [11 Documents / Resources](#)
- [12 Related Posts](#)



## iVIEW 1786AIO All-In-One Laptop Computer



### Product Overview



### VIEWPC:

1. Main Camera.
2. Charging Indicator.
3. Power Indicator.
4. Power Button: Press and hold to power on I off. Tap it briefly to enter and wake from sleep mode.
5. Volume-/ Volume+: Lower I raise Volume.
6. Reset Button.
7. Speakers.
8. RJ-45 Port: For Ethernet LAN.

9. USB 3.0 Port (3 in total).
10. 12V DC-in Charge Port.
11. HDMI: HDMI video output.
12. Micro SD Card Reader: Supports Micro SD and Micro SDHC format.
13. Earphone Jack: 3.5mm standard earphone jack can transmit the audio signals of laptop to earphone.
14. HDD Compartment: Supports 2.5" SATA or 2.5" SSD Internal Hard Drives.

## Keyboard & Mouse Setup

Before powering on your device, follow the instructions below to set up your wireless keyboard and mouse. The wireless receiver has been inserted to the USB port of device. If not, open battery cover on the mouse and remove the wireless receiver. You can find it located next to the battery compartment, shown in the picture below:



- Insert the receiver in any of the device's USB Ports (shown in Section 1 ).

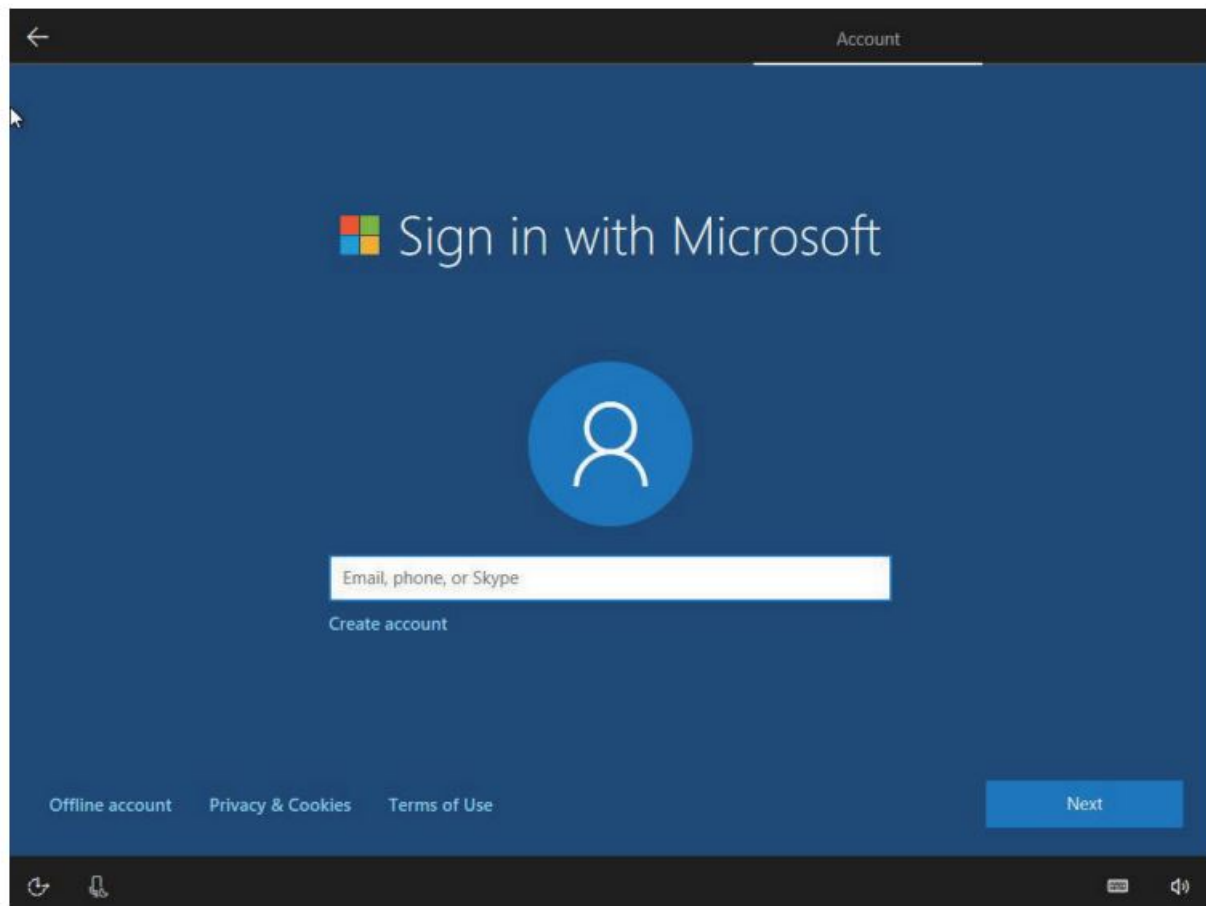


- Insert batteries into the mouse and keyboard respectively, and re-attach battery covers. Battery sizes are as follows:
  - Keyboard = 2 AAA Batteries
  - Mouse = 2 AAA Batteries (Make sure the switch on bottom is on.)
  - You can set the mouse response speed by pressing the DPI button: Quick (1200DPI, default), Slow (B00DPI).

## System Setup

Windows will automatically help you set up your internet connection and system preferences.

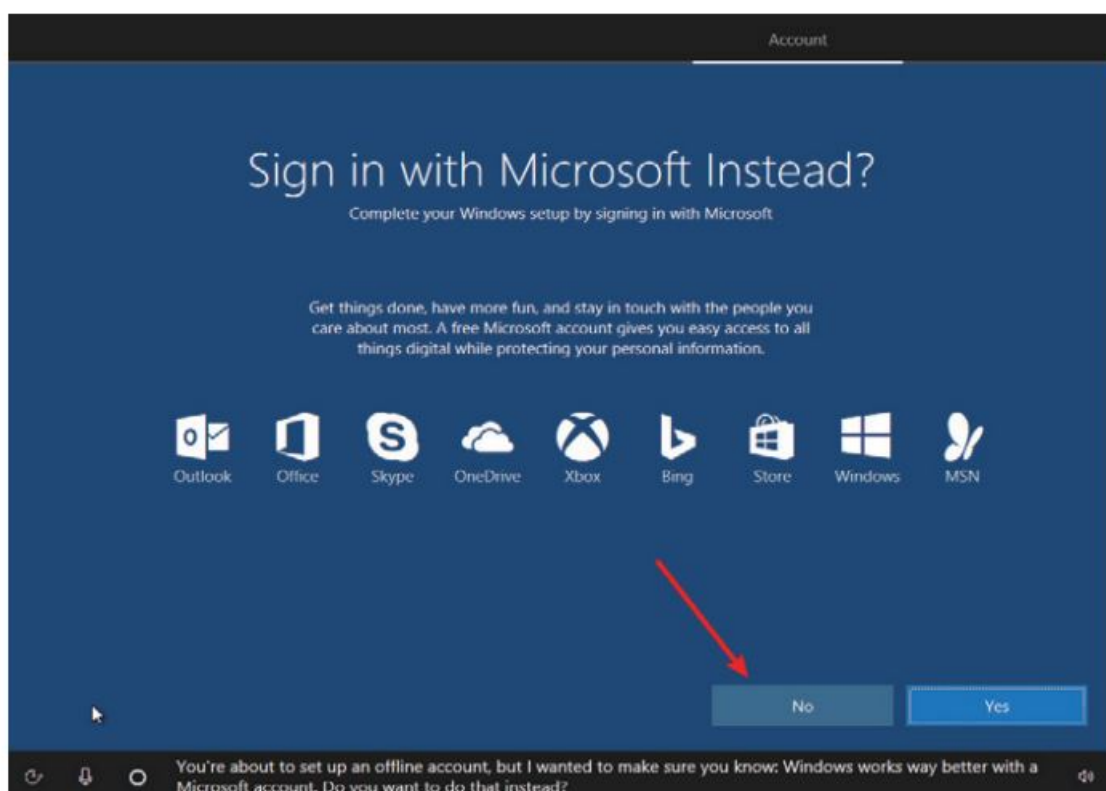
## Account Setup



Once your network is set up, you'll be asked to set up an account. You can add an existing Microsoft account, or you can create one.

If you do not wish to create a Microsoft account at this time, you can select OFFLINE ACCOUNT near the bottom left-hand corner.

(**NOTE:** Some features, like the Microsoft store, will only be available using a Microsoft account.)



When creating an offline account, you'll be prompted with the screen above. Just select NO, and you'll be able to

set up an offline user name and password.

## Desktop Functions

### Windows Start Menu

You can access the Windows Start Menu by clicking on the Windows Icon in the bottom-left corner of the screen, or by pressing the **Windows** key on your keyboard. Some apps and functions will only be available using a Microsoft Account.



### Basic Touch Screen Commands

- Slide to the right from the left side of the screen to open Task View.
- Slide to the left from the right side of the screen to open the action center.

Task View



Action Center



- To zoom out on an image or web page, place two fingers on the screen and pinch inwards.
- To zoom in on an image or web page, place two fingers on the screen and pinch outwards.



Zoom Out



Zoom In



- In any menu or page, place finger and slide downwards to scroll to the top of the menu or page.
- Tap on an App or File with your finger and slide sideways to move that file. Remove finger to place file in new location.

Scroll up



Drag & Drop



- In any menu or page, place finger and slide upwards to scroll to the bottom the menu or page.
- Place your finger on an app or anywhere on the screen and hold for 2 seconds, then release. Just like a right-click on a mouse, this will open a context menu.

Scroll Down



Context Menu



## Personalization

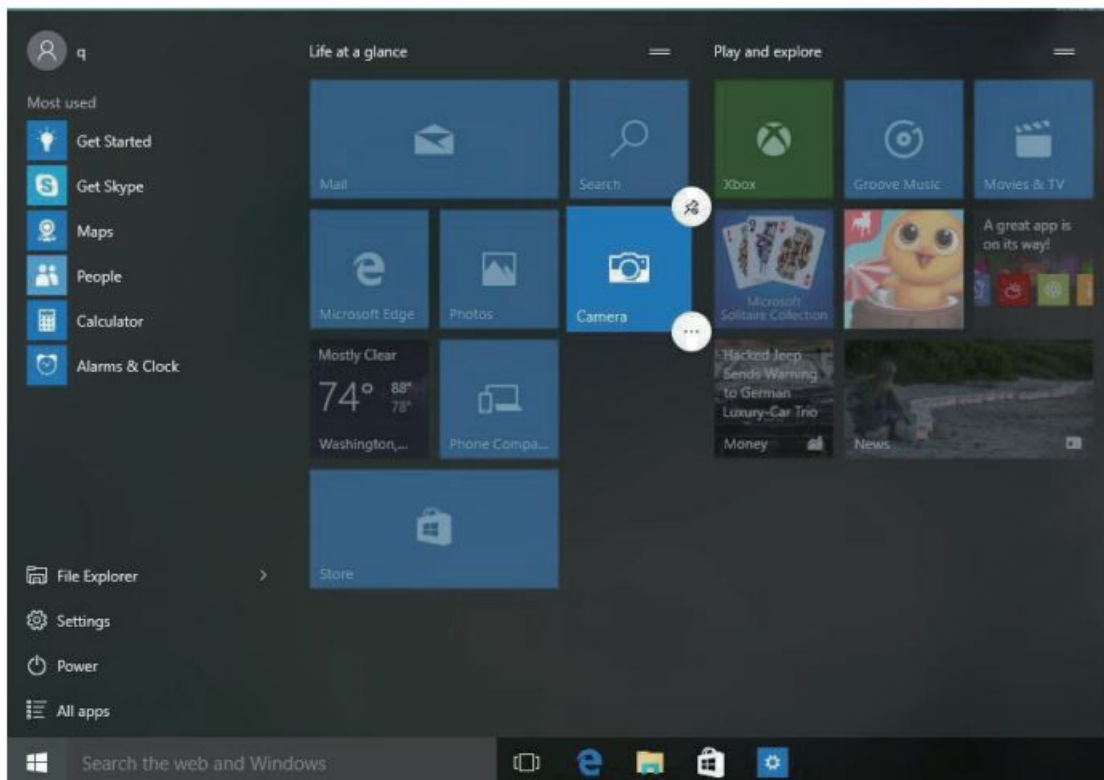
- Your device comes with an assortment of pre-installed applications. You can view them all in the start menu, under "All Apps". You can also pin your favorite applications to the start menu or the taskbar for quick access.



- If you would like to pin apps to the start menu, right-click, or tap & hold on an application until a menu pops up. From there, you can select “Pin to Start” or select the “More” option if you would like to pin the application to the taskbar.

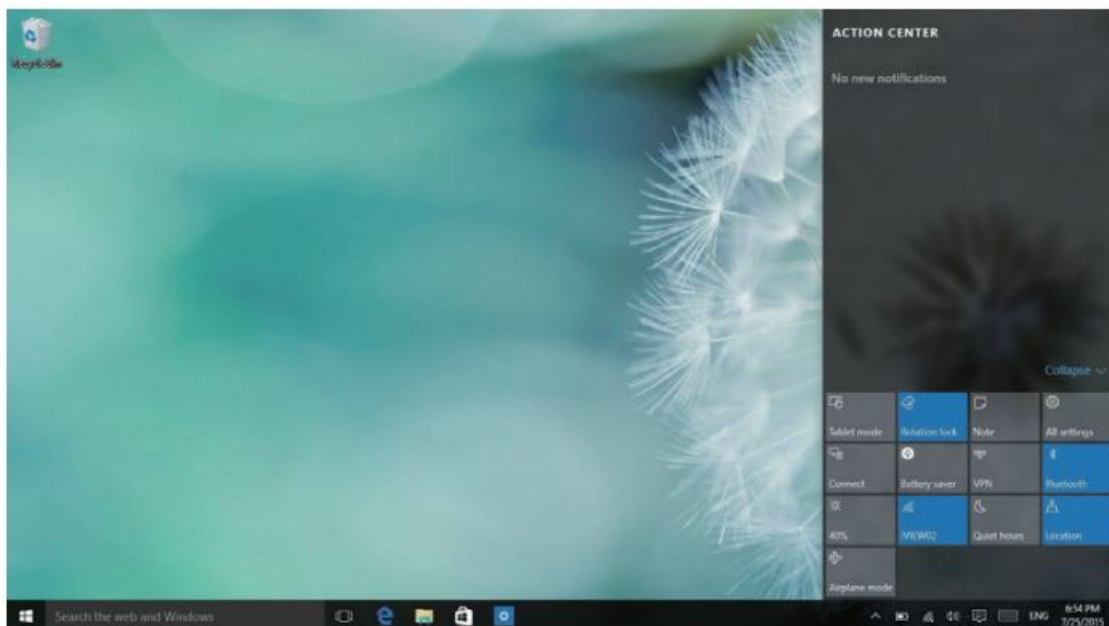


- You can also unpin apps that you don't use, by right-clicking and selecting “Unpin”. If you're using the touch screen, tap and hold the pinned application for about one second, click 0 to unpin it from the Start Menu or Taskbar. You can also click D for additional options.



## Action center

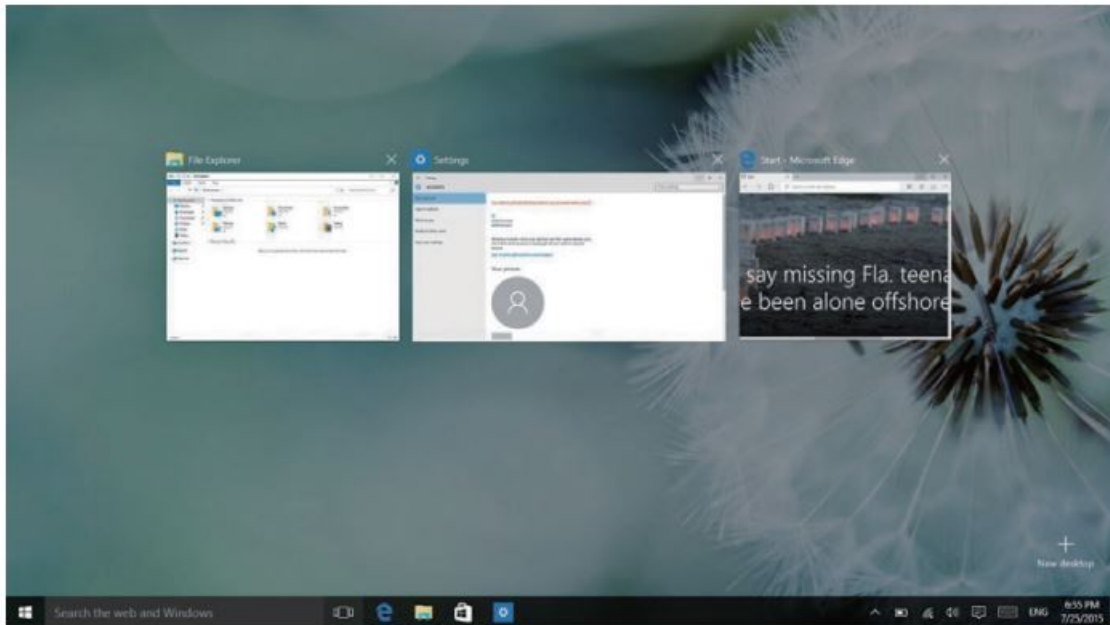
From the right side of the screen, place and slide your finger to the left to open the Action Center. Here, you are able to monitor your device's status, access settings, connect to a Bluetooth device, etc.



## Task View

From the left side of the screen, place and slide your finger to the right to open Task View. This will display all applications currently running on your device. Click on an application to close it.



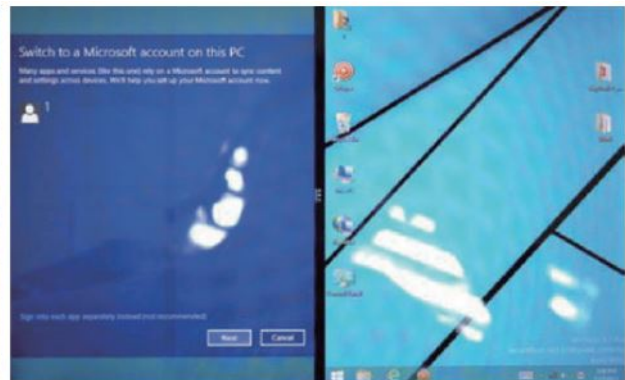


## Split-Screen

If you want to split-screen two applications at the same time, open the two apps you want to use, making sure one of them is full screen. Tap and hold to drag an app to the left side of the screen (Figure 1) to dock it. Select the second app to open on the right side. In (Figure 2), you can press and slide the bar in the center to partition screen space between the two apps.



(Figure 1)



(Figure 2)

## Additional Functions

### Sleep, Restart and Shut Down

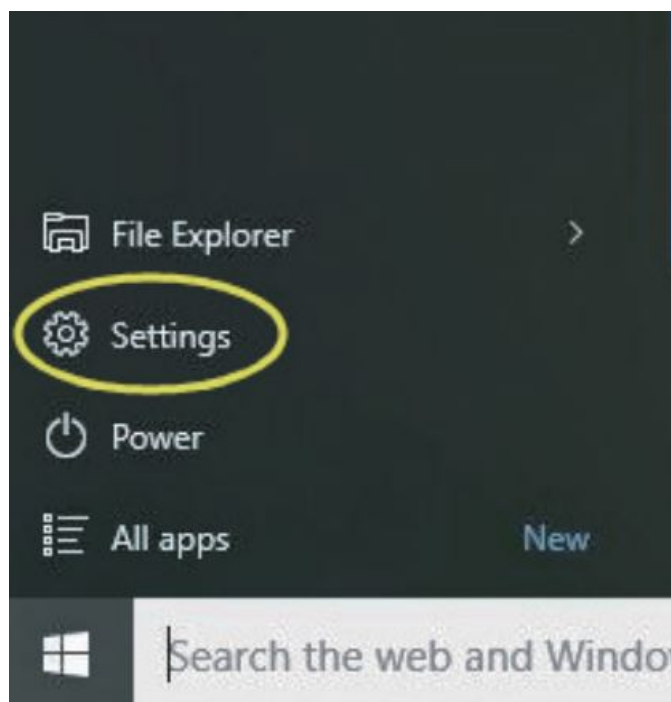


- Forced Reset/ Shutdown

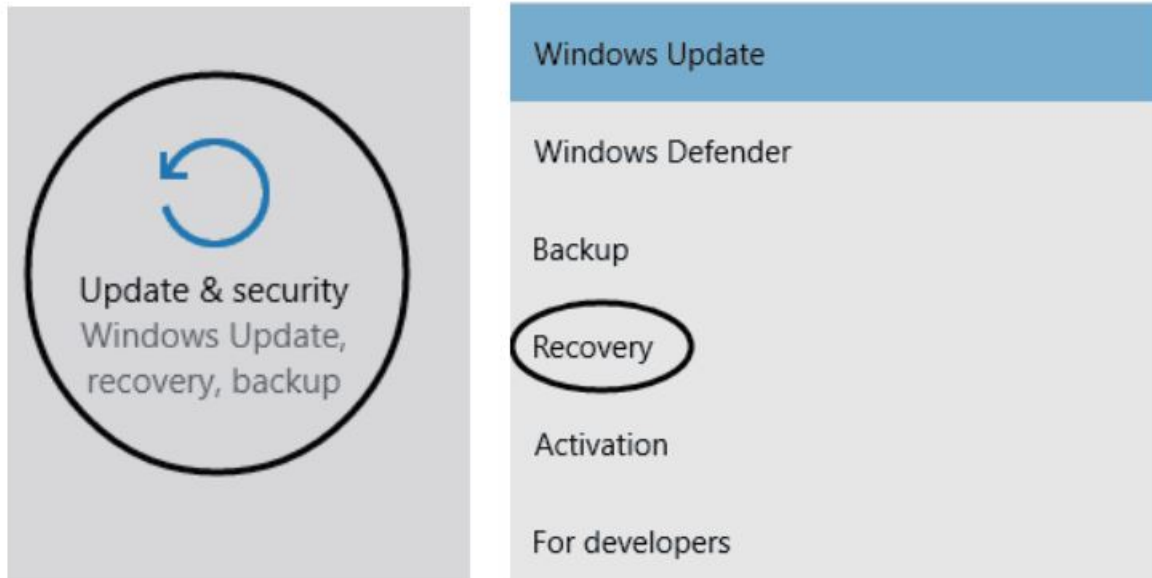
If the tablet freezes, you can press and hold the Power button for 8-12 seconds. The tablet will shutdown automatically.

## Recovery

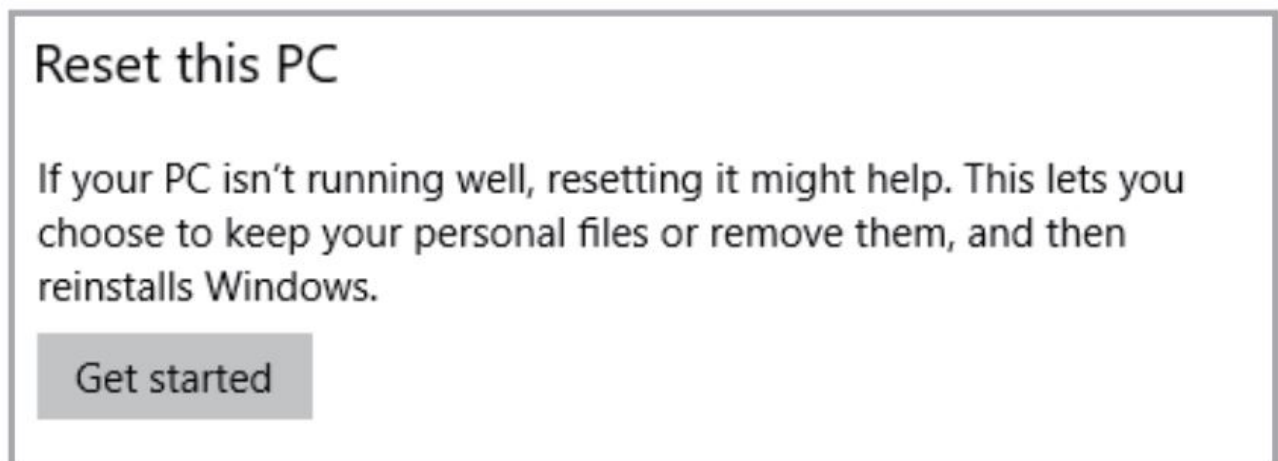
- When your device is not performing well, you can perform a Windows Reset.  
(**NOTE:** This WILL erase all your data and revert back to factory settings)
- First, click on the start icon, or press the #; key on your keyboard. This will bring up the start menu. Select SETTINGS.



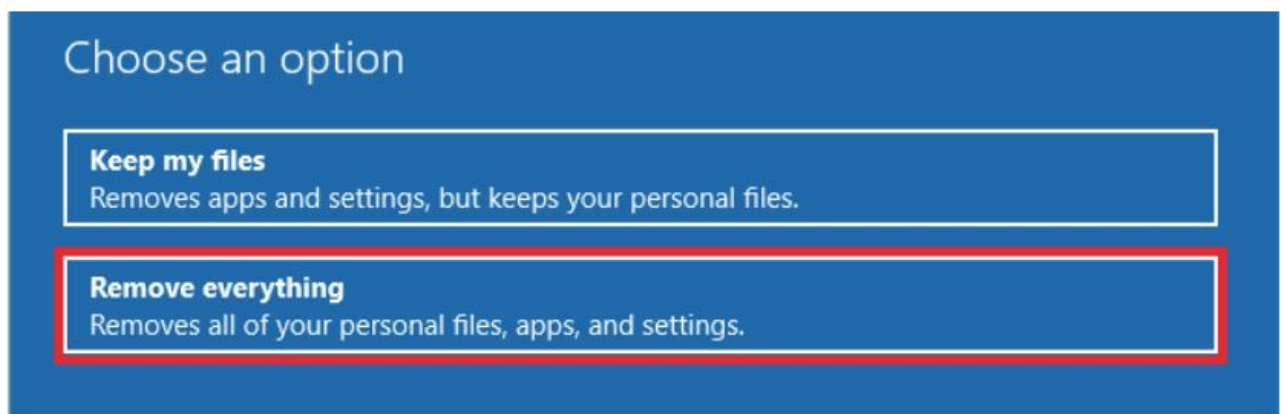
- You'll then be brought to the SETTINGS Window. At the bottom, select UPDATE AND SECURITY, followed by RECOVERY.



- Select the Get Started Button underneath RESET THIS PC.



- You will be prompted TWICE. First, select, REMOVE EVERYTHING.



- When Prompted again, select JUST REMOVE MY FILES. Do you want to clean the drives, too?

## Do you want to clean the drives, too?

### Just remove my files

This is quicker, but less secure. Use this if you're keeping the PC.

### Remove files and clean the drive

This might take a few hours, but will make it harder for someone to recover your removed files. Use this if you're recycling the PC.

- Make sure your device is plugged in, and select RESET. The reset process will take roughly an hour.

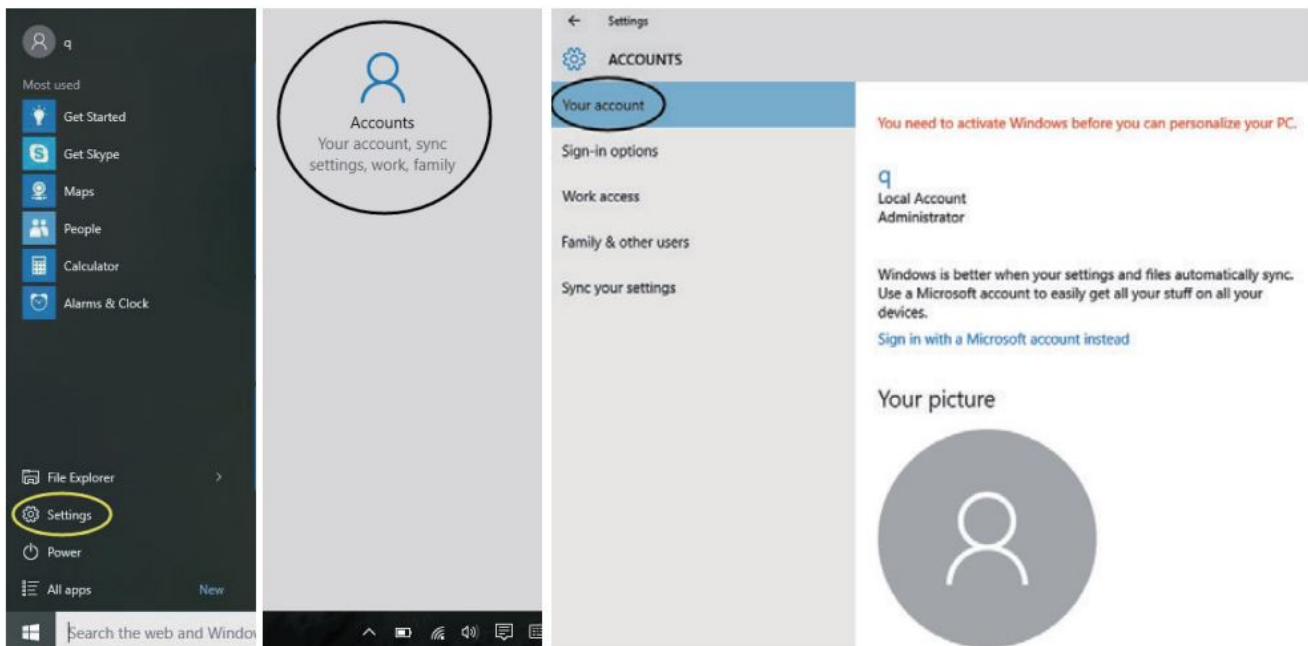
## Bluetooth

- Turn on Bluetooth by opening the action center and tapping on the Bluetooth Icon. To pair a device, tap and hold the Bluetooth icon until the option "Go to Settings" pops up. Select ii. Your device will automatically look for devices to pair.
- Sending Files: To send files, click on the Bluetooth O icon on the lower right corner of the desktop. Click "Send a File" and follow the instructions provided by Windows.
- Receiving Files: To receive files, click on the Bluetooth O icon on the lower right corner of the desktop. Click "Receive a File" and Windows will scan for Bluetooth connections.

## Account Options:

Open the Start Menu by clicking on the Windows icon at the bottom-left corner of the screen. Select "Settings" followed by "Accounts." On the right side of the window, you can create an offline account or set up a Microsoft Account for your device. Under "Sign-In Options", you can change your password or add additional verification methods (PIN number, picture, etc.)

You can also select "Family & Other Users" to add additional users to your device.



## Storage Expansion

The device comes with 64GB of internal storage. However, you can use one or both of the following methods to further expand the storage of your device.

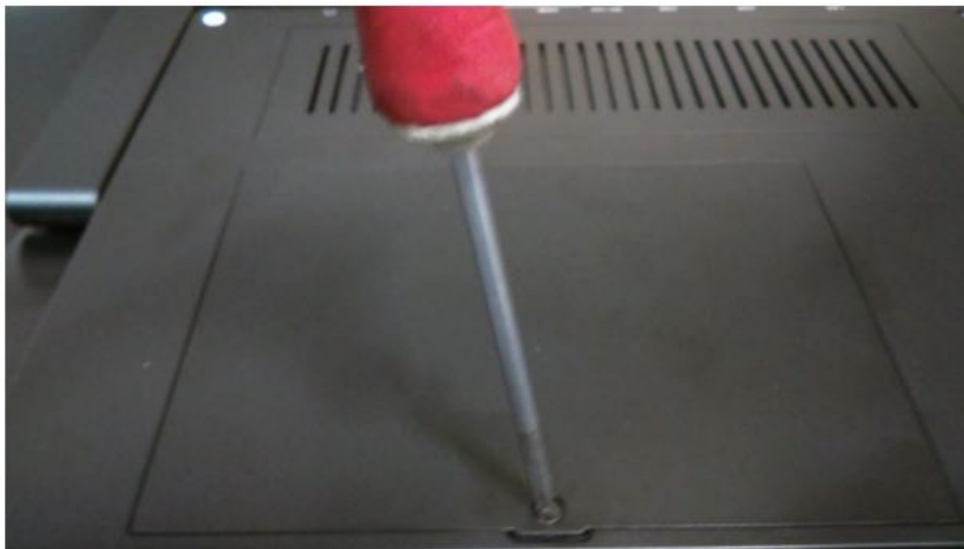
### **Micro SD Card**

You can expand your device's storage space by inserting a Micro SD Card into the CARD slot of your device. Make sure to firmly push the SD Card into the slot until it clicks. The device supports Micro SD cards up to 128GB.



### **Internal Hard Drive**

Your device comes with a hard drive port in the back of the device (shown in Section 1 ). Before installing a hard drive, make sure your device is powered off and unscrew the cover, using a Phillips screwdriver. Once the screw is removed, the lid can pop open. Insert a 2.5 inch hard drive or SSD drive into the compartment and slide it into the connector. Once connected, re-attach and screw-in lid.







## Product Features

- Screen: 17.3" Touch Screen, 1920 x 1080 IPS High Resolution
- Processor: Intel® Celeron® Processor N4120, Quad Core, 1.1 GHz, up to 2.6GHz
- OS: Windows 10 Pro
- Memory: 4GB
- Storage: 64GB
- Wireless Connection: WIFI 802.11 ac/a/b/g/n (2.4GHz & 5GHz)
- Build in Bluetooth 4.0
- Camera: 2.0MP
- Support Skype Video Call
- Support 1080P Full HD Video
- I/O Port : USB 3.0 x 3 / HDD x 1 / RJ45 x 1 / HDMI x 1
- Card Slot: Micro SD Card (Max: 128GB)
- Audio Output: Stereo Speaker (40 2.0W) x 2 / 3.5MM Stereo Headphone Jack
- Windows Store, Office Work, Internet Browser, Calendar, Calculator, E-mail, etc.
- Picture Viewing, Music / Video Playback, Games, etc.
- Supports Multi Languages
- Battery: Built in 2,600 mAh / 7.4V Li-ion, Rechargeable
- Power Source: 12V = 3A

## Accessories

Below items are included in your package:

- All-in-One PC
- Power Adapter
- User Manual

- Wireless Keyboard
- Wireless Mouse
- Handbag

## FCC Warning Statement

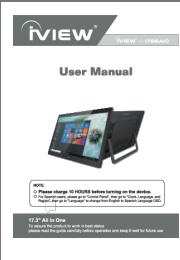
Changes or modifications not expressly approved by the party responsible for compliance could void the user’s authority to operate the equipment. This equipment has been tested and found to comply with the limits for a Class B digital device, pursuant to Part 15 of the FCC Rules. These limits are designed to provide reasonable protection against harmful interference in a residential installation. This equipment generates uses and can radiate radio frequency energy and, if not installed and used in accordance with the instructions, may cause harmful interference to radio communications. However, there is no guarantee that interference will not occur in a particular installation. If this equipment does cause harmful interference to radio or television reception, which can be determined by turning the equipment off and on, the user is encouraged to try to correct the interference by one or more of the following measures:

- Reorient or relocate the receiving antenna.
- Increase the separation between the equipment and receiver.
- Connect the equipment into an outlet on a circuit different from that to which the receiver is connected.
- Consult the dealer or an experienced radio/TV technician for help.

## FCC Radiation Exposure Statement

The antennas used for this transmitter must be installed to provide a separation distance of at least 20 cm from all persons and must not be co-located for operating in conjunction with any other antenna or transmitter.

## Documents / Resources

	<div> <div> <a href="#">iVIEW 1786AIO All-In-One Laptop Computer</a> [pdf] User Manual           </div> <div>             1786AIO, 2AAWC-1786AIO, 2AAWC1786AIO, 1786AIO All-In-One Laptop Computer, All-In-On e Laptop Computer           </div> </div>
-------------------------------------------------------------------------------------	---------------------------------------------------------------------------------------------------------------------------------------------------------------------------------------------------------------------------------------------------------