



IULOCK IU-20 Remote Code Function User Guide

[Home](#) » [IULOCK](#) » IULOCK IU-20 Remote Code Function User Guide 

IULOCK

IULOCK Remote Code
User Guide
V1.02

Contents

- [1 What is the remote code](#)
- [2 Getting Started](#)
- [3 Get remote code](#)
- [4 Troubleshooting](#)
- [5 Documents / Resources](#)
 - [5.1 References](#)

What is the remote code

All locks come from IULOCK support the remote code function (IU-20,IU-12,IU-30..), It does not require APP. No network connection is required for locks. You can visit iulock website and activate your lock according to the website prompts, You can generate the code you want to control, You can control the number of times for unlocking. (From 1 to 50 times) It can also control the code validity period (From 1 hour to 2 years).

Getting Started

Step 1

<https://mylock.iulock.com>

The image shows a mobile app interface for 'iULOCK smart door lock'. At the top, the status bar shows the time 15:34 and signal strength. The app header is dark blue with the word 'Welcome' in white, followed by 'iULOCK smart door lock' in a smaller font. A user profile icon is in the top right. The main content area has a white background. It features a 'SIGN IN / REGISTER' section with a sub-header 'Register or Sign in to your account'. Below this are two input fields: 'Your email' and 'Password'. A blue 'Log in' button is positioned below the password field. To the right of the button is a small icon of two people. Below the sign-in section is a 'Lost Password' section with the sub-header 'Forgot Password' and an icon of a person with a question mark. At the bottom of the app interface, there are three icons: a padlock, an eye, and a house. Below these icons is a browser address bar showing 'AA mylock.iulock.com' and a refresh icon. The bottom of the screen shows a standard mobile OS navigation bar with back, forward, and other navigation icons.

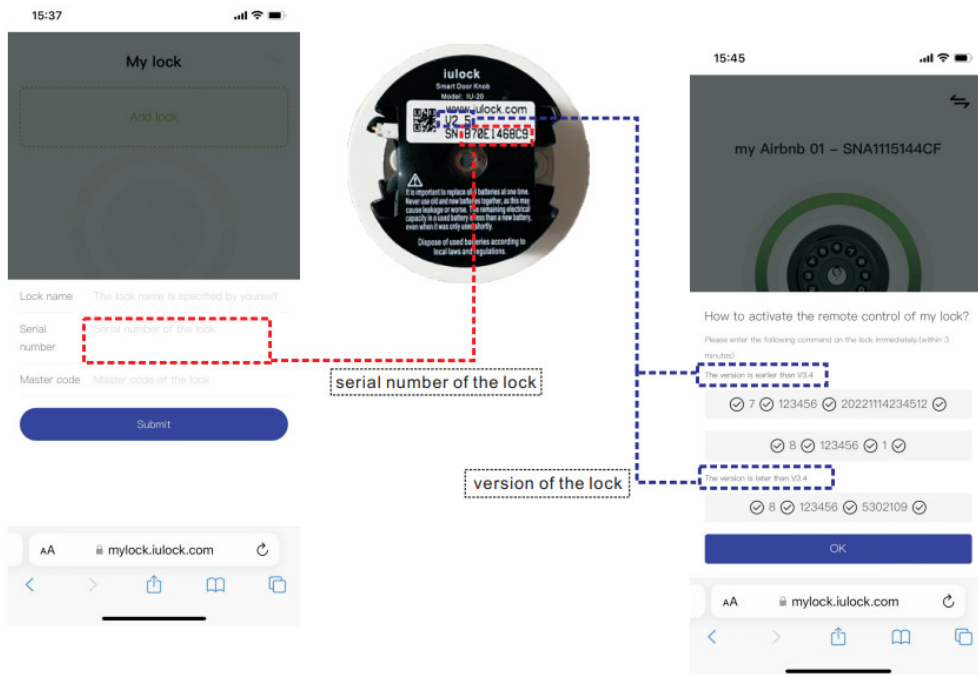
Step 2 Register your account

This image is identical to the one above, showing the mobile app interface for 'iULOCK smart door lock'. It displays the 'Welcome' screen with the 'SIGN IN / REGISTER' section, including email and password input fields, a 'Log in' button, and a 'Lost Password' link. The browser address bar at the bottom shows 'mylock.iulock.com'.

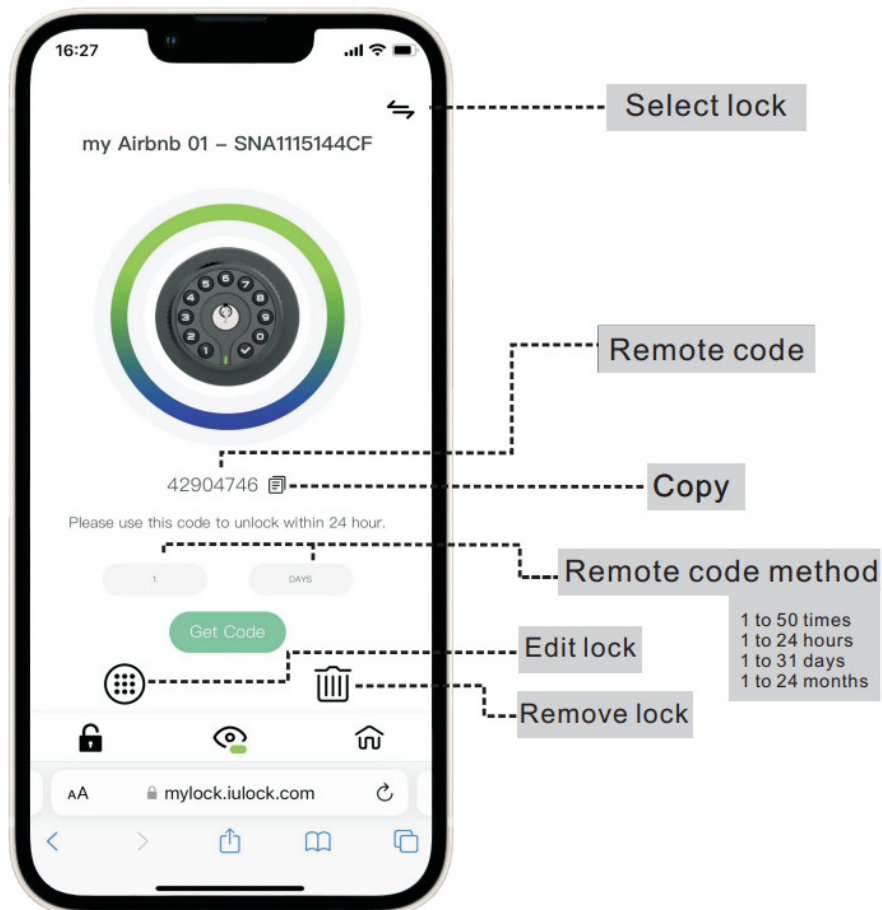
Step 3 Add your lock



Step 4 Activate your lock



Get remote code



Troubleshooting

Q: Do I need to reactivate after I reset the lock?

A: Yes, For safety reasons. The remote code is disabled by default. The remote function must be reactivated after the lock is reset or the lock is powered on again.

Q: Why the lock does not accept the code?

A: Please try activating again. Sometimes it may not activate at once.

Q: Must the master code be the same as master code of my lock?


A: Yes , must same. if you change the master code of your lock, you must edit the master code of website lock .

Q: Can I add many locks?

A: Yes ,you can.

IULOCK

Documents / Resources

	<p>IULOCK IU-20 Remote Code Function [pdf] User Guide</p> <p>IU-20 Remote Code Function, IU-20, Remote Code Function, Code Function, Function</p>
---	---

References

- [iuLock - Smart Lock](#)