



## ITSU IS0181 Aroma Diffuser User Manual

[Home](#) » [ITSU](#) » ITSU IS0181 Aroma Diffuser User Manual 

### Contents

- [1 ITSU IS0181 Aroma Diffuser](#)
- [2 FUNCTION](#)
- [3 SPECIFICATION](#)
- [4 INSTALLATION](#)
- [5 MAINTENANCE](#)
- [6 TROUBLESHOOTING](#)
- [7 Documents / Resources](#)
- [8 Related Posts](#)

# ITSU

**ITSU IS0181 Aroma Diffuser**



### WARNING

This appliance can be used by children aged from 8 years and above and persons with reduced physical, sensory or mental capabilities or lack of experience and knowledge if they have been given supervision or instruction concerning use of the appliance in a safe way and understand the hazards involved. Children shall not play with the appliance. Cleaning and user maintenance shall not be made by children without supervision. It must only be supplied at safety extra low voltage corresponding to the marking on the appliance. Unplug the appliance during fill-ing and cleaning.

- Do not empty water from the side which air-vent located.
- Do not lean the aroma diffuser during operation.

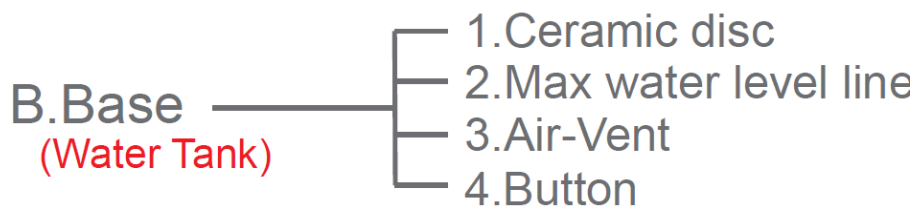


### FUNCTION

With innovative and unique design, this Aroma Diffuser combines the soul of both orient and western cultures with new fashion and modern science. By breaking up the mixture of water and essential oil into millions of micro-particles, a stream of air entirely diffuses activated ingredients of blended essential oil, which could be easily absorbed by body and stay long in the room. Under the richly enhanced effect as aromatherapy, your nerve would be eased gradually and your skin would be moisturized at the same time.

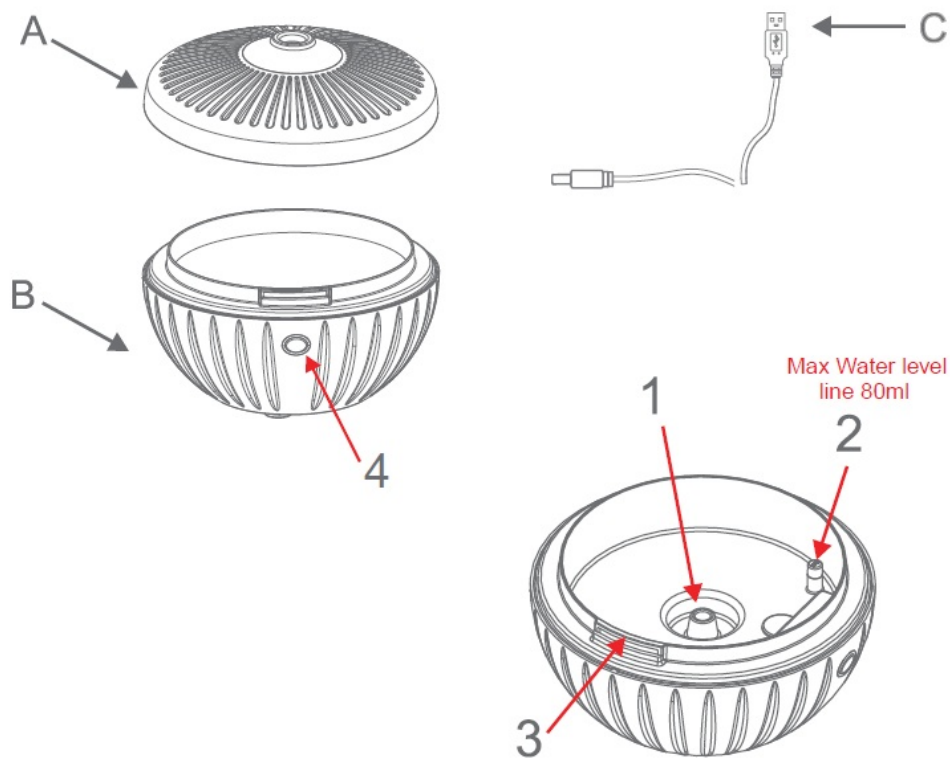
### SPECIFICATION

- Product name: Aroma Diffuser
- Product Size: 117MM, H82MM
- Input Voltage: DC 5V/1A
- Power: 5W
- Water Load: 80mL
- A. Top Cover



- C. USB Line

Pressing time		
	<b>Mist</b>	<b>Light</b>
<b>Once</b>	<b>On</b>	<b>Changing</b>
<b>Twice</b>	<b>On</b>	<b>color choose</b>
<b>Three times</b>	<b>On</b>	<b>Off</b>
<b>Four times</b>	<b>Off</b>	<b>Off</b>

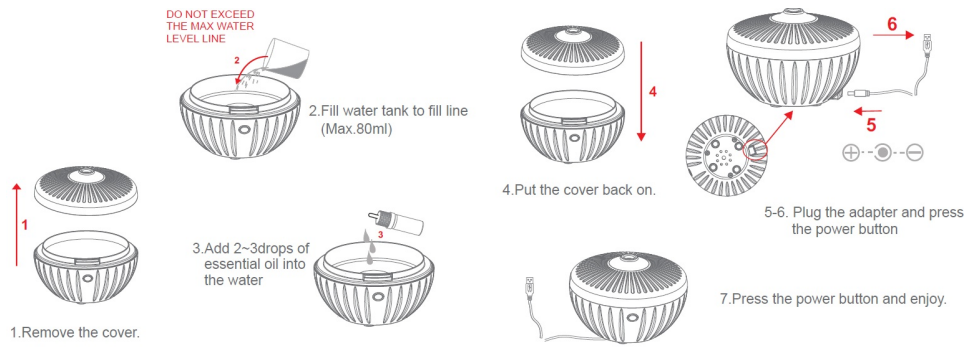


## INSTALLATION

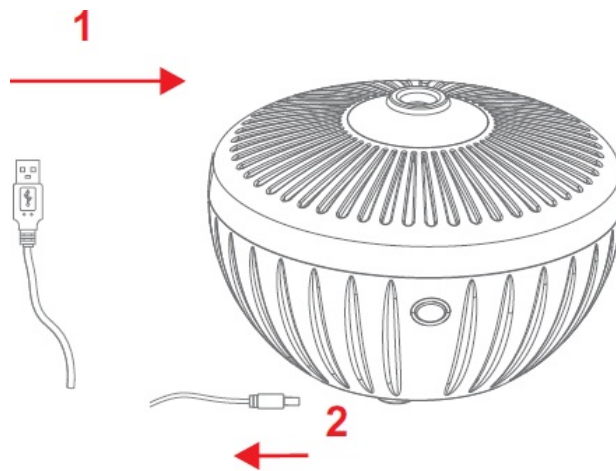
### Important Notes Before Use:

- A. Place the unit on an even surface, Its suggested to put on tap water, pure water or mineral water in normal temperature(no demineralized water).Corrosive liquid is not suitable to this unit.
- B. Fill water (80ml) into the water tank.
- C. Water-soluble essential oil is recommended. Be careful, some essential oils are corrosive so they can affect your item. Please contact your local dealer for further information.
- D. When the product is tripped during opeartion , liquid may then flow into the internal space of the unit. Unplug

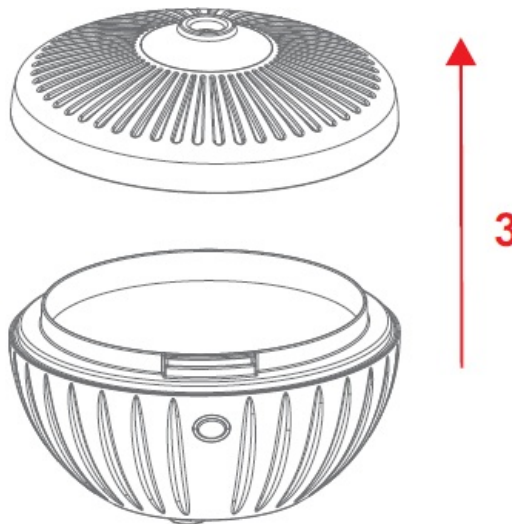
the power and empty all water, keep the unit standing still in a ventilated place for 3 days .If there s anything wrong when you reuse, contact your local dealer for help.



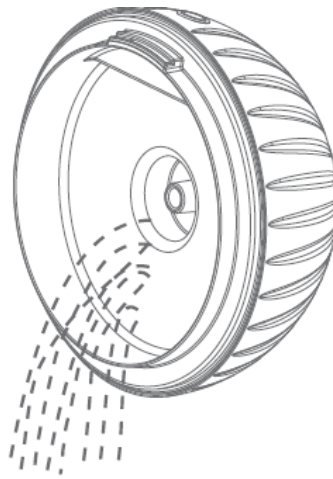
## MAITENANCE



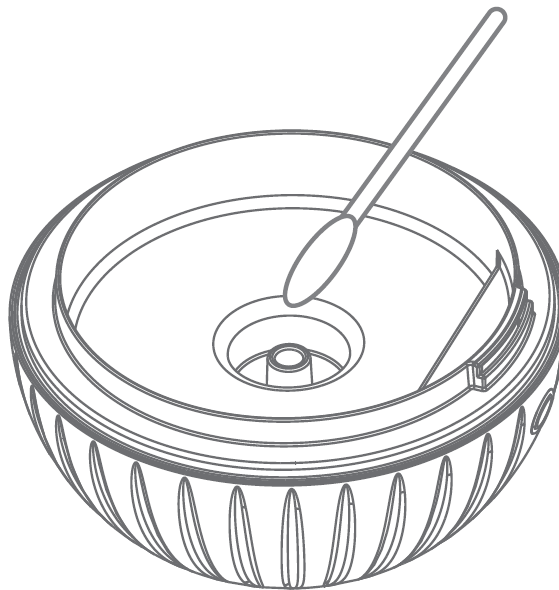
- Power off the unit and then pull out the plug.



- Take the cover off.



- Empty water from the back of the tank carefully without allowing water to flow into the air vent.
- Use a clean swab or cloth to clean the unit is recommended at least once every 3 days.



- Keep it clean and dry if you don't use it for long time.

## TROUBLESHOOTING

Symptom	Possible Cause	Solution
<b>No Mist</b>	Power supply is not connected	Plug in the power cord and press the on/off button.
	Insufficient water	Add water
	Water tank overfilled exceeding 80ml	Pour out some water
	The cover is blocked by water drops or sundries	Clean with a swab to keep ventilated
	The ceramic disc may go bad after 3,000 hours of usage	Replace the ceramic disc.

## Documents / Resources

ITSU



## [ITSU IS0181 Aroma Diffuser](#) [pdf] User Manual

IS0181 Aroma Diffuser, IS0181, IS0181 Diffuser, Aroma Diffuser, Diffuser