

## itsensor RS485 Software User Guide

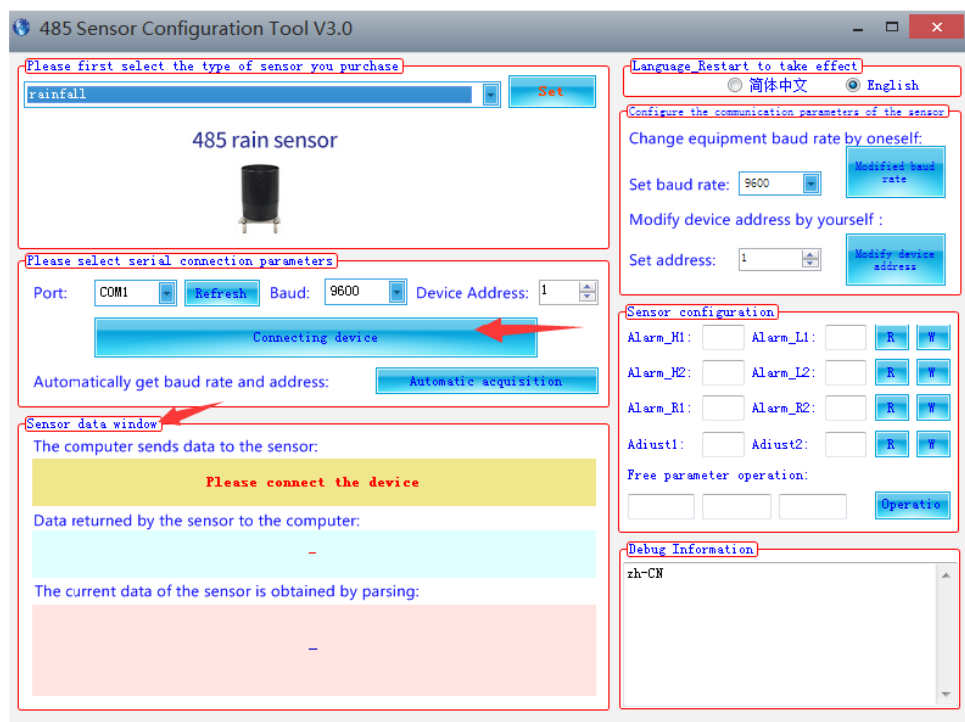
[Home](#) » [itsensor](#) » itsensor RS485 Software User Guide 

### Contents

- 1 itsensor RS485 Software
- 2 How to use RS485 software
  - 2.1 Operation Steps on RS485 software
- 3 Documents / Resources
- 4 Related Posts



### itsensor RS485 Software



## How to use RS485 software

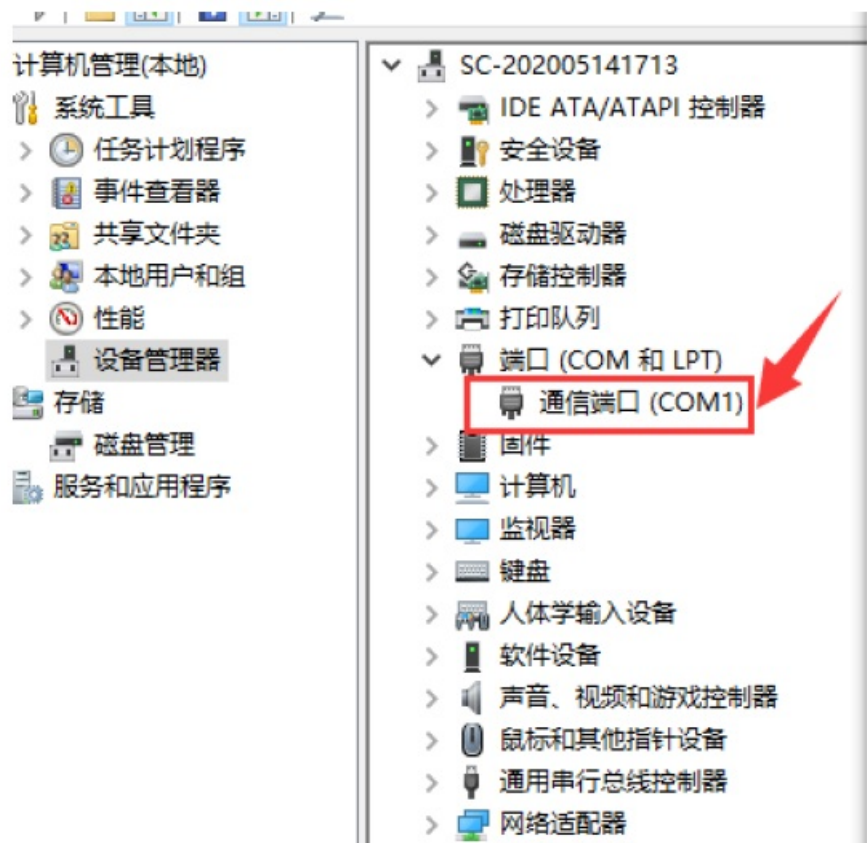
1. Connect RS485 sensors to Computer with RS485/USB interface
2. Install "Driver" in user computer.

### Operation Steps on RS485 software

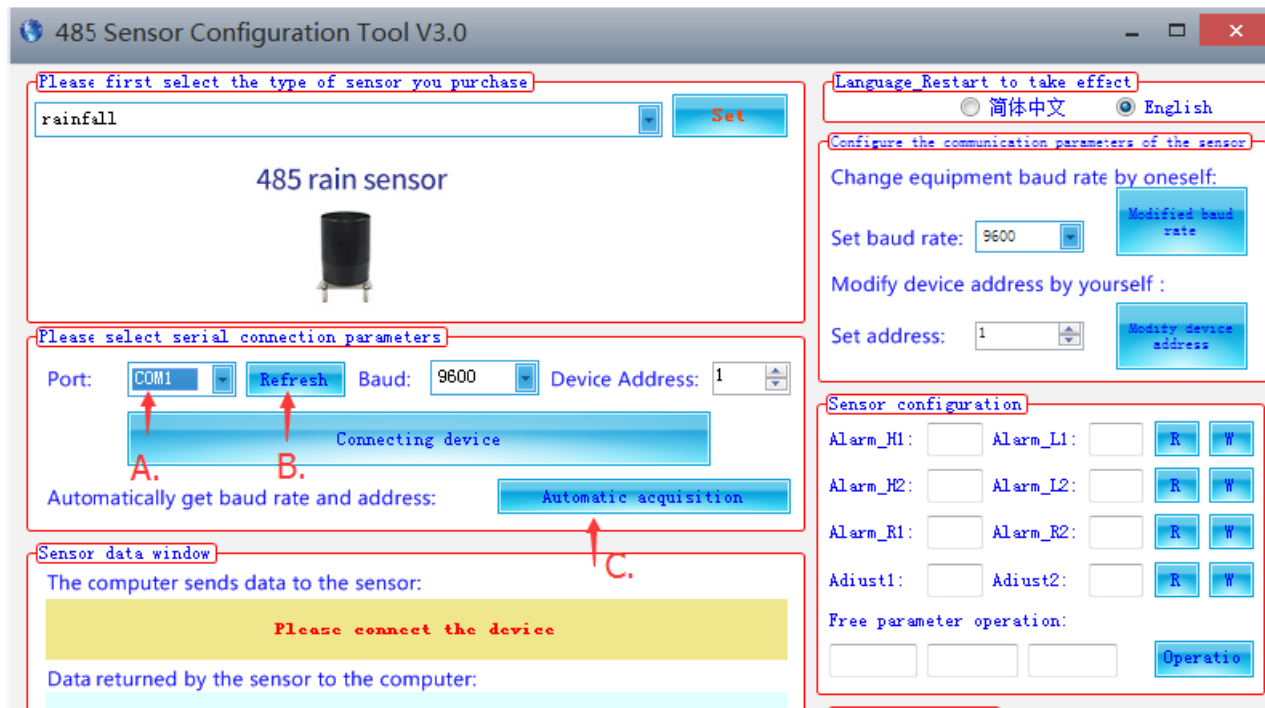
1. Click and open the software
2. Click "advanced settings" at right top of the page and change language to English



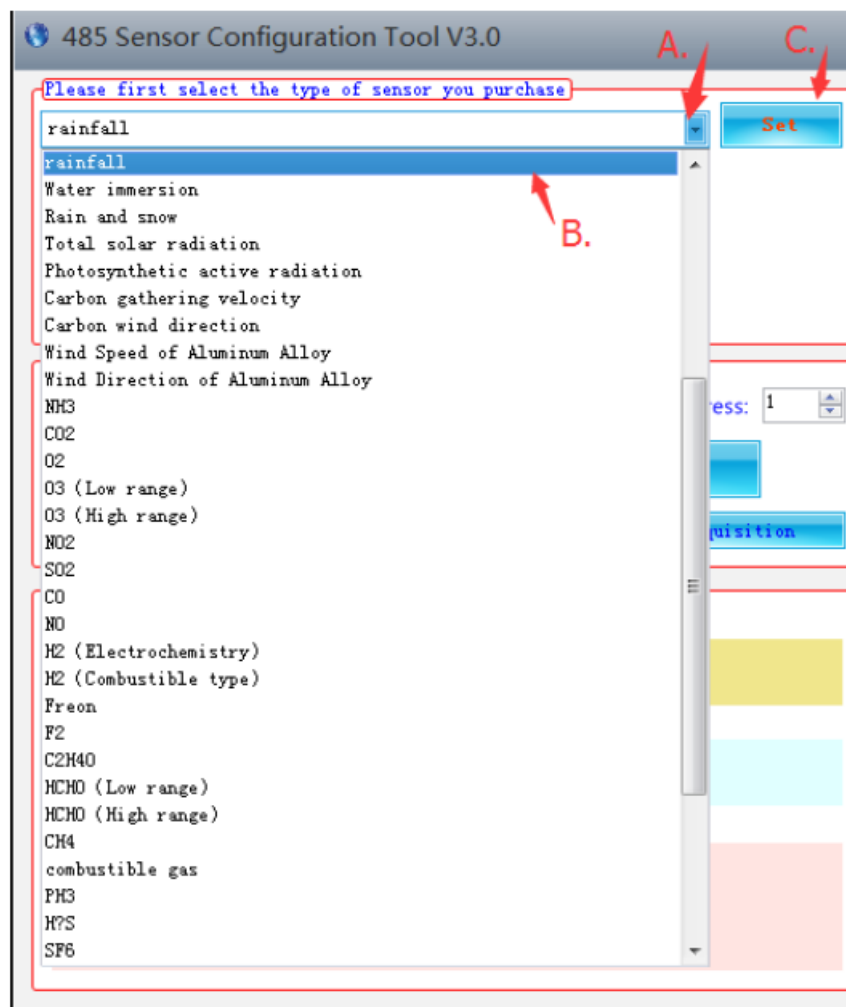
3. Right-click on the computer to open the "device manager", Select the port at the port "COM #"

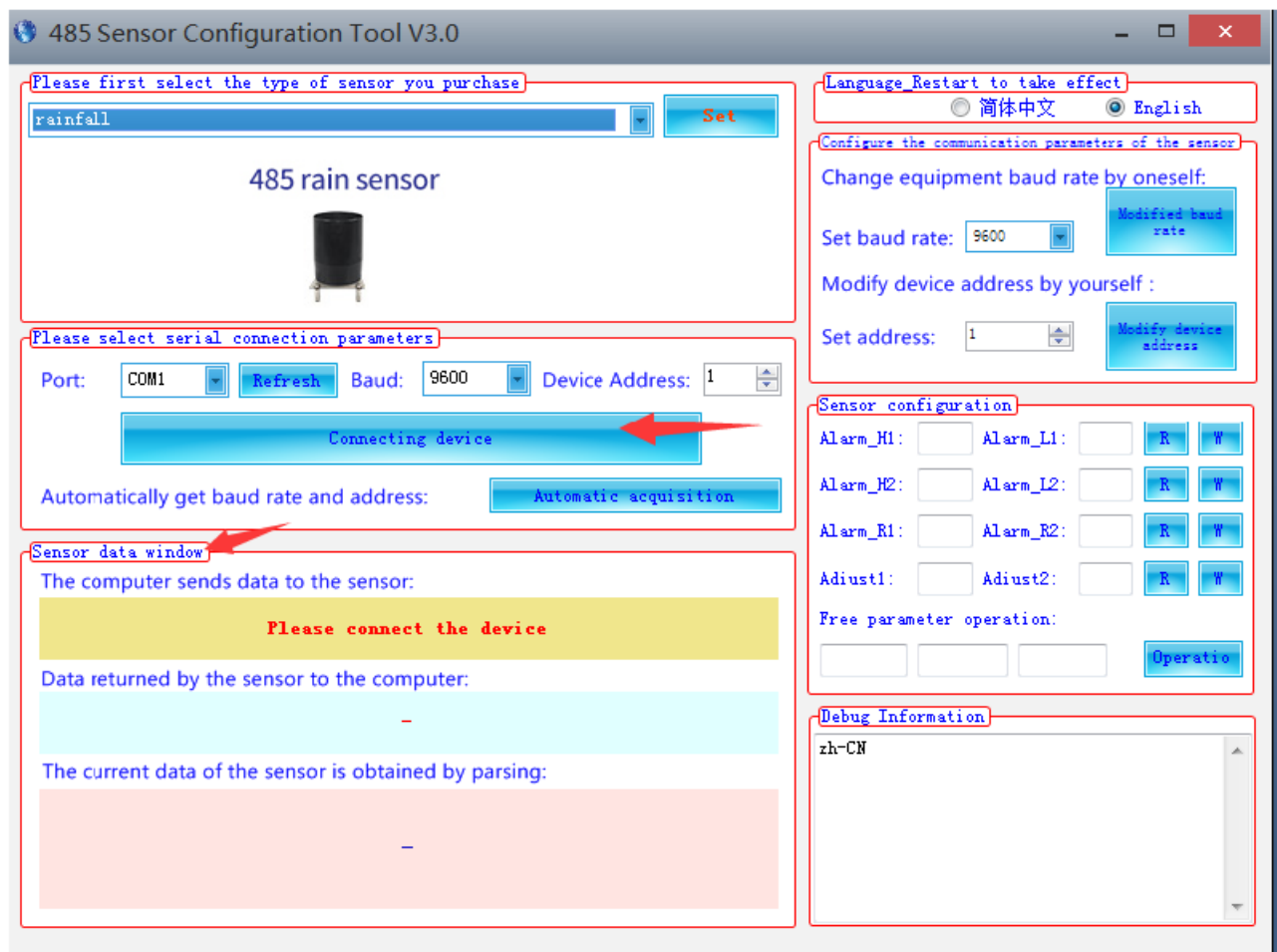


4. Per below Picture: Put the “COM #” into A, and click B to refresh, then click C.



5. Per below picture: Select Product Name in the list below by A to B and click C to set, and then click “connecting device”.





6. Then if the sensor is well connected, the user can see the data status on the “Sensor data window”

## Documents / Resources

	<p><a href="#">itsensor RS485 Software [pdf] User Guide</a> RS485 Software, RS485, Software</p>
---	---