



ITRONICS ITRONCAM Smart Battery AI Camera User Manual

[Home](#) » [ITRONICS](#) » ITRONICS ITRONCAM Smart Battery AI Camera User Manual 

ITRONICS ITRONCAM Smart Battery AI Camera User Manual



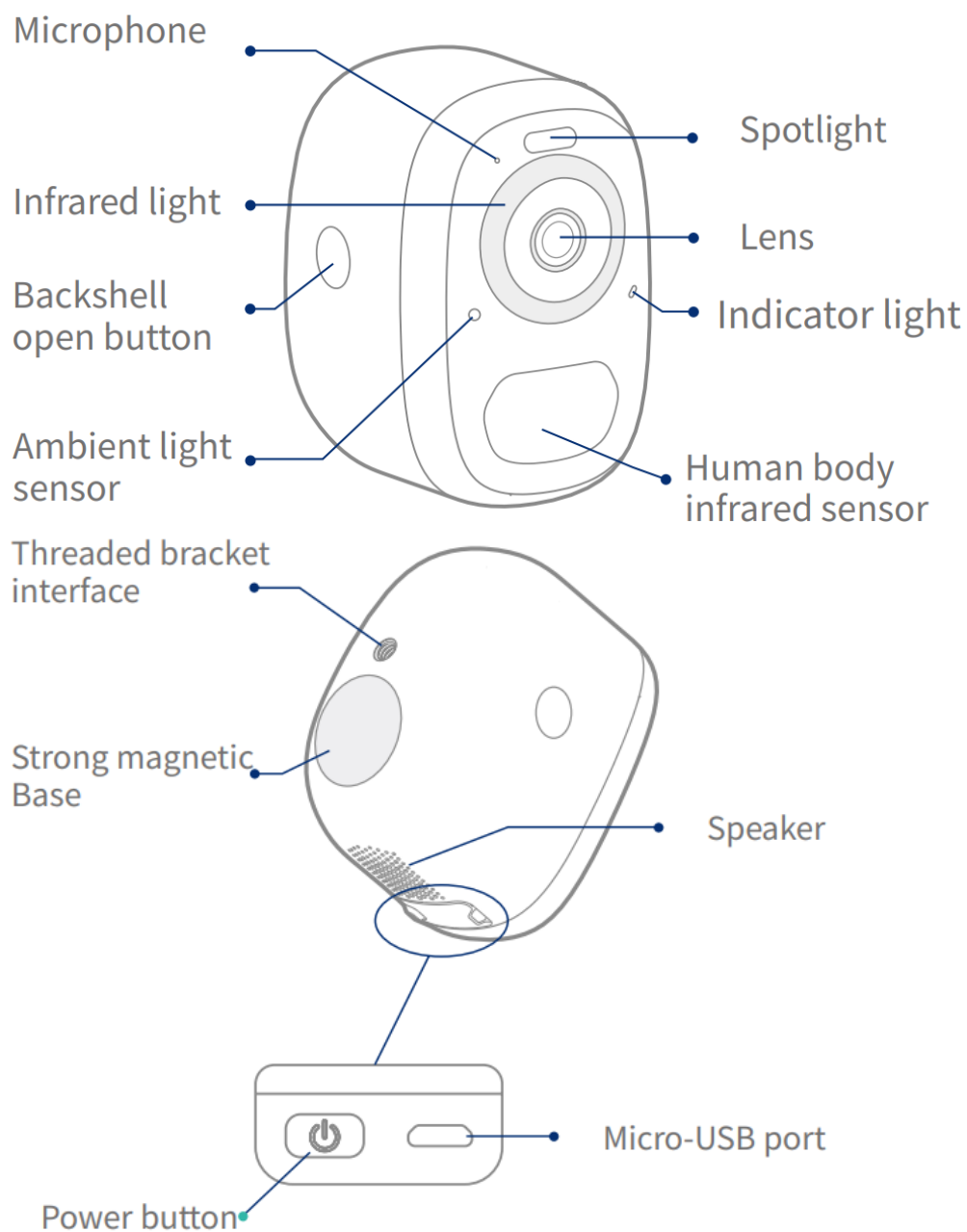
Contents

- 1 Packing list
- 2 Product appearance
- 3 Solar Panel Connection to Camera
- 4 Quick start
- 5 Power on/off and network configuration
- 6 Set up the camera
- 7 Install the camera
- 8 Share the camera
- 9 Charge the camera
- 10 Indicator light status
- 11 Product specification
- 12 Firmware upgrade
- 13 ISED Statement
- 14 FAQ
- 15 1.Q:Camera permission management: How to invite family and friends to use my camera together?
- 16 2.Q:Why doesn't the Wi-Fi name appear when I connect to Wi-Fi?
- 17 3. Q:Will the camera show red lights when night vision is activated?
- 18 4.Q:What are the requirements for Wi-Fi?
- 19 5.Q:How far should the camera be placed from the router?
- 20 6.Q:What is the maximum length of recording time?
- 21 7.Q:How to quickly view videos by category?
- 22 8.Q: What should I do when the device malfunctions?
 - 22.1 FCC warning
 - 22.2 Documents / Resources
 - 22.2.1 References
 - 22.3 Related Posts

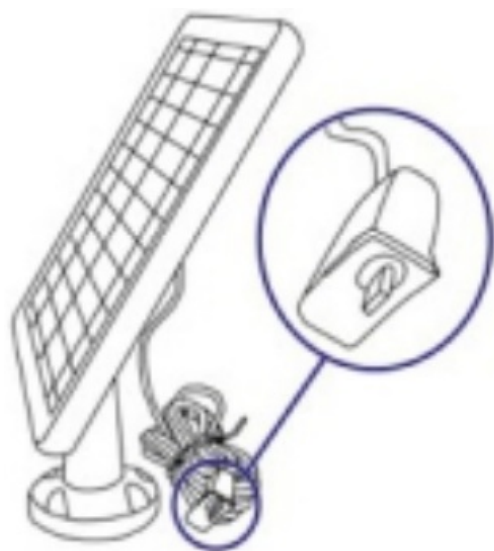
Packing list

- 1 x Battery Powered iTron Camera
- 1 x Magnetic Bracket
- 1 x Standard Bracket
- 1 x Micro USB Cable
- 1 x 3M Adhesive Pad
- 1 x Pack of Screws
- 1 x Quick Start Manual

Product appearance

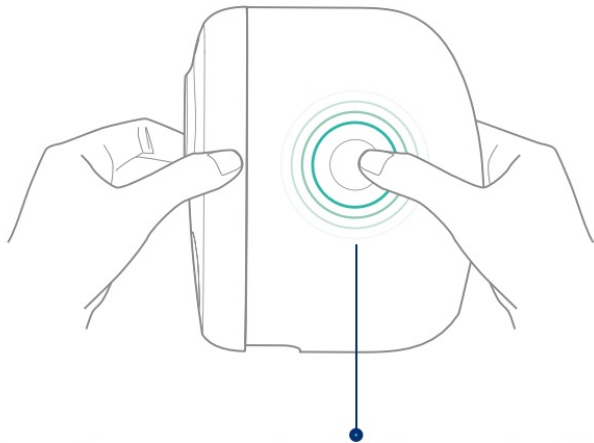


Solar Panel Connection to Camera

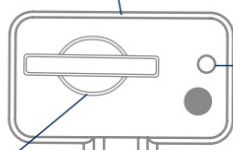
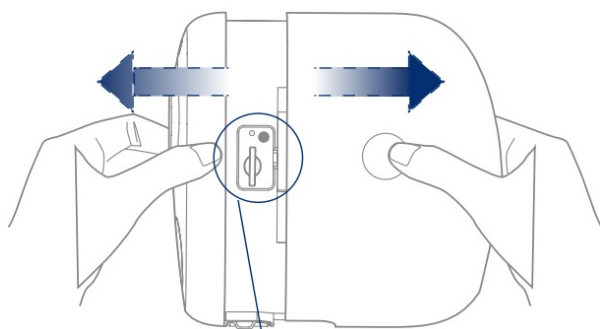


Insert the micro-USB plug into the micro-USB port on the camera. Ensure area is sealed with white weather proof

rubber bung (Optional Accessory).



Press buttons on both sides, and pull out the back cover.



Reboot hole

Micro-SD card slot

Quick start

The wireless smart battery camera supports battery- powered supply and AC-powered supply.

Download and install the App

The wireless smart battery camera supports Android and iOS App. To download the mobile application, go to Apple Store or google Play store and Search iTronCAM, download and install for free. And follow the instruction to complete the user registration.



Android

Download



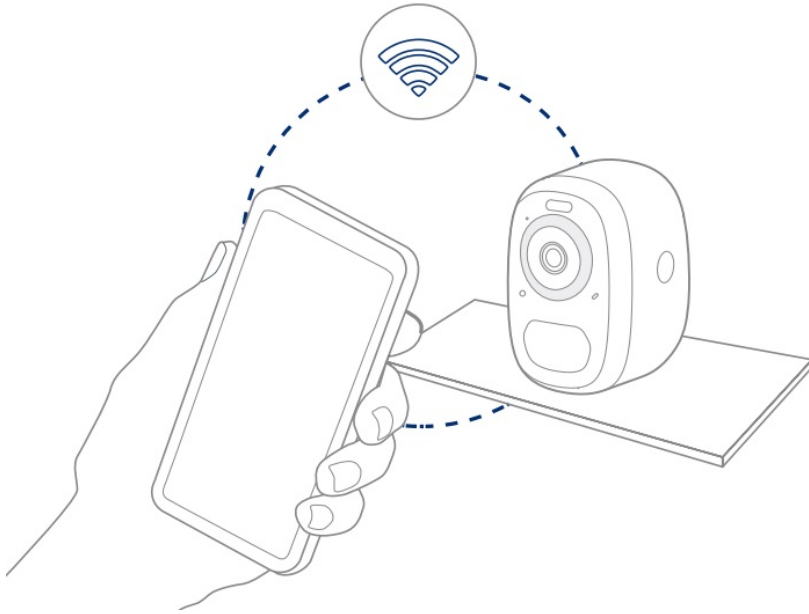
App Store

Download

Add the device

Sign in to App, connect to Wi-Fi and add the device according to the prompts (please bring the device close to the

router when configuring).



Power on/off and network configuration

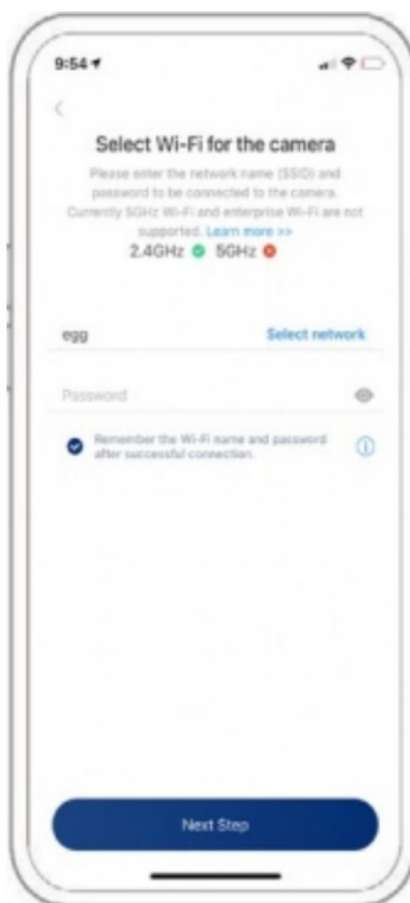
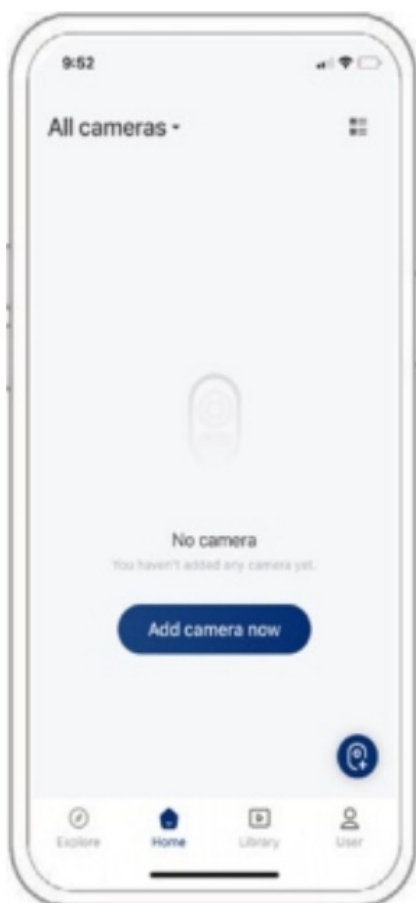
- Long press the power button for 3s to power on/off the device.
- Double click the power button to enter the network configuration mode after the prompt tone.



When connecting the camera for the first time, use the App and follow the instruction to configure the camera network.

Set up the camera

1. Click the “Add Camera Now” in the App and enter the Wi-Fi network name and password that you want the camera to connect.

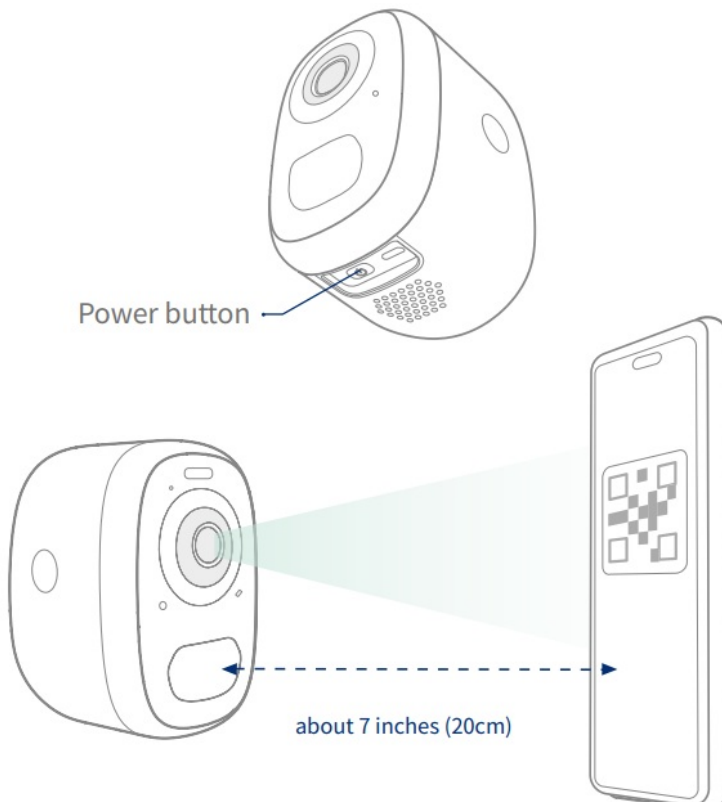


To ensure a longer distance connection, the camera only supports the 2.4Ghz Wi-Fi with stronger wall penetration capability and does not support Wi-Fi for enterprise- level authentication currently. Please ensure that the entered Wi-Fi meets the requirements. After completion, click “Continue” to generate the QR code for pairing the camera.



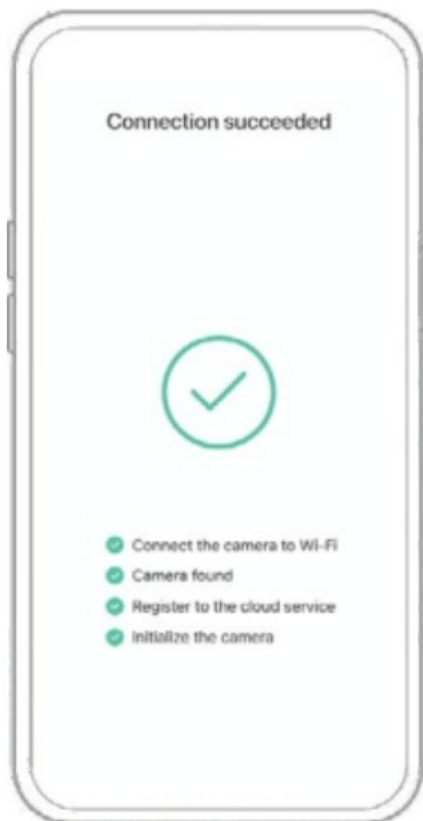


2. After pressing the camera switch for 3 seconds, the camera will turn on. At this moment, target the camera at the QR code of the mobile App, with a distance of about 20cm (about 7 inches) until the camera emits a "Di" sound, which represents the scanning is succeeded and the pairing is started.



3. After a while, the camera will give out a prompt sound of a successful connection. At this moment, please set the name for the device on the App and select the location you want to place the device. Click "Continue" to

complete the pairing.



Possible problems with pairing:

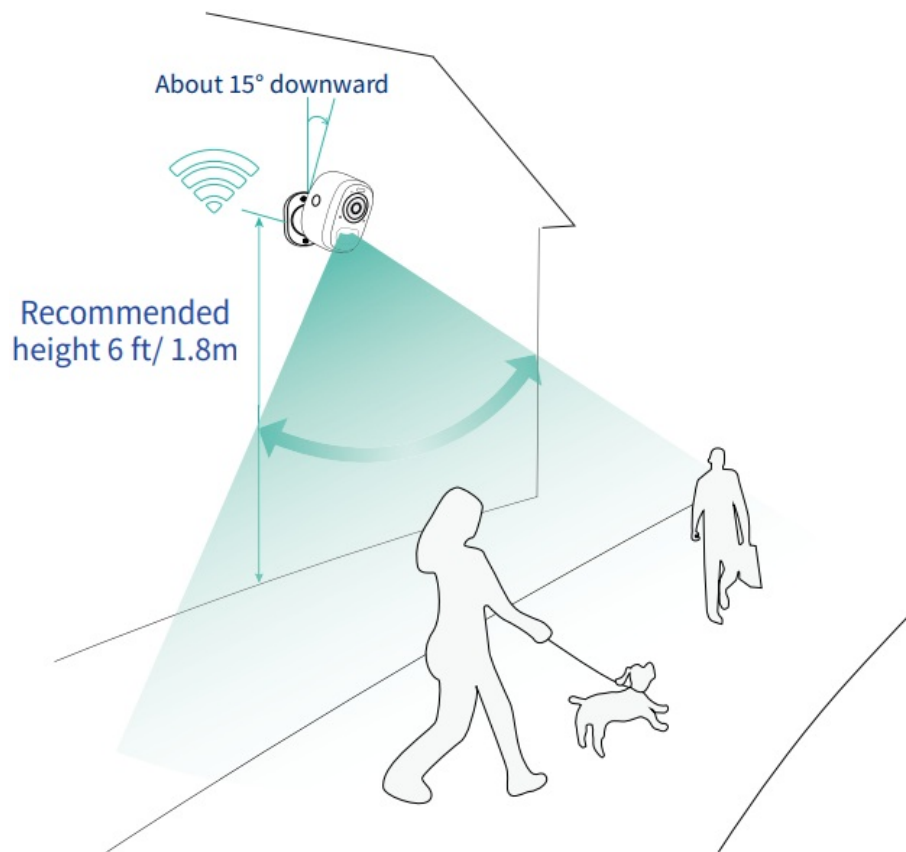
- When you hear the “Wi-Fi Password Error”, please check whether the Wi-Fi password you entered in the App is correct;
- When you hear the “Authentication error”, please ensure that your Wi-Fi network is not an enterprise- level network, and the device supports only the network with the security level below WPA-2;
- When you hear the “Wi-Fi not found”, please check whether you have selected or entered the correct Wi-Fi name, and place the device near the Wi-Fi router and ensure that the router is powered on. Please note that 5Ghz Wi-Fi cannot be searched by the device;
- When you hear the “Retrieving IP timeout” it indicates that the number of devices connected to the router may have exceeded limits of your router. Please remove some of the connected devices that are not used and restart the router; you may need to contact the router administrator;
- When you hear the “Cloud service connection fail” please check whether your router is connected to the internet. You could try to temporarily turn off the firewall to reconnect.

Install the camera

You can place the camera on a shelf or other surfaces to use, or you can install it on a wall.

Select a good spot for your camera

Install the camera in a position where its view is not blocked and ensure that it is within the coverage of the Wi-Fi network. The PIR infrared sensor is more sensitive to movements across the camera’s field of view than movements toward or away from the camera.



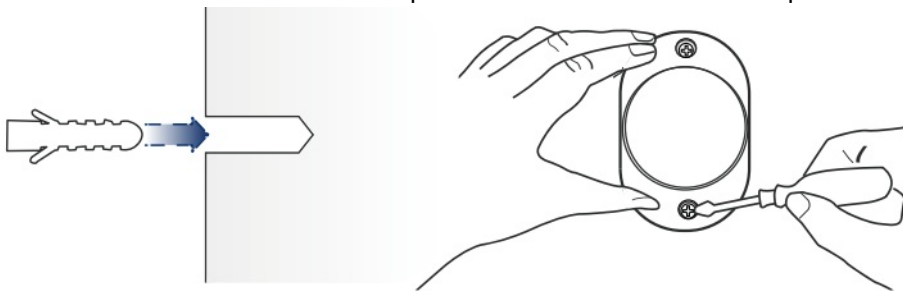
Install the bracket

3M adhesive fixing:

Remove the protective film on one side of the 3M adhesive and stick it to the mounting surface of the bracket. Then remove the protective film on the other side to fix the mounting bracket in the installation position. (The installation surface must be clean, smooth, and dry. It is not suitable for uneven wood, leather, or stucco walls). Please press and hold the bracket in the installation position for 3 minutes to achieve the best adhesion.

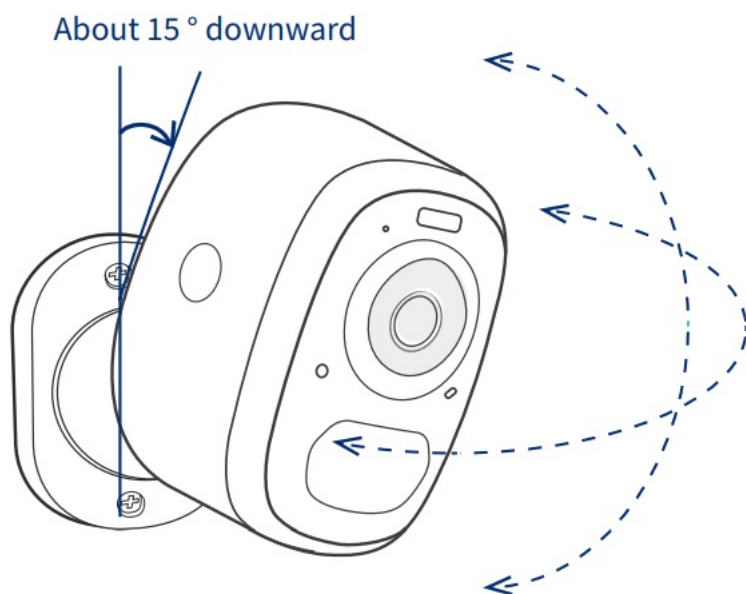
Screw fixing:

Use the drilling tool to punch holes in the wall according to the hole distance of the base. It is recommended to mark the holes on the wall with a pencil before drilling. Screw the expansion nut into the holes on the wall, and then connect the bracket to the expansion nut with screws to complete the fixing.



Adjust the angle

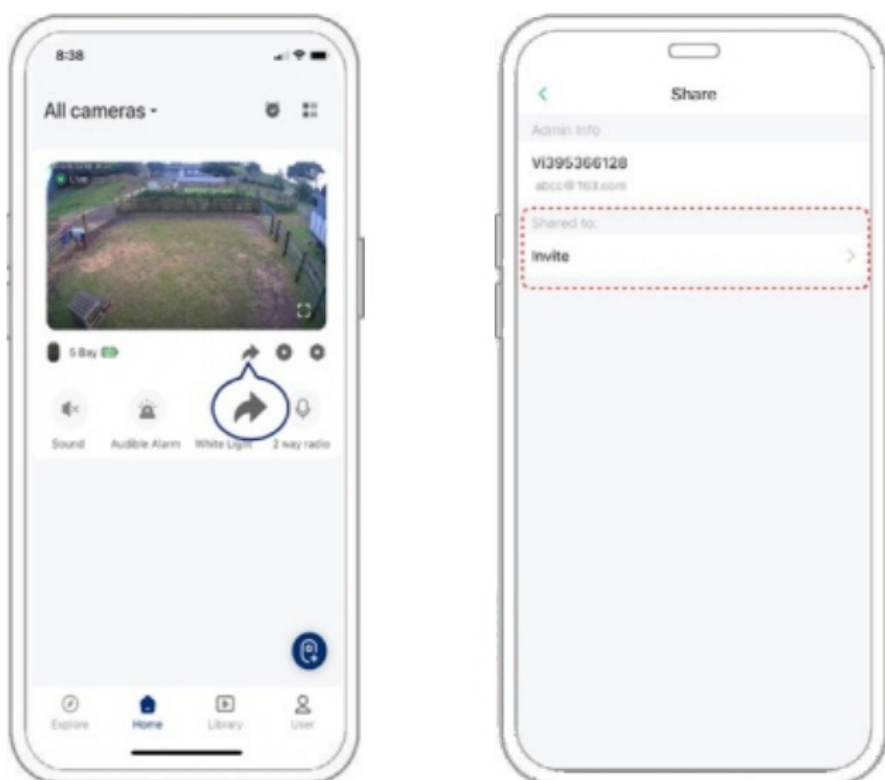
Attach the camera to the magnetic bracket, the best angle is about 15 degrees downward, then adjust the surveillance angle.



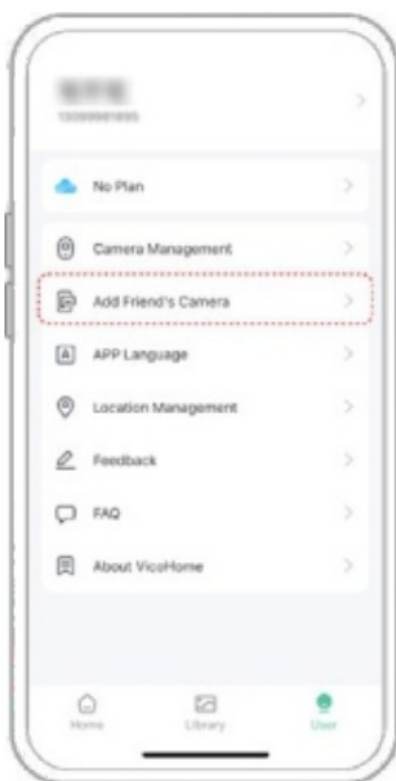
Share the camera

When you need to view the camera with other family members or friends, you can use this function. Only the administrator can share and set the device. Other members can only view the live or playback from the device.

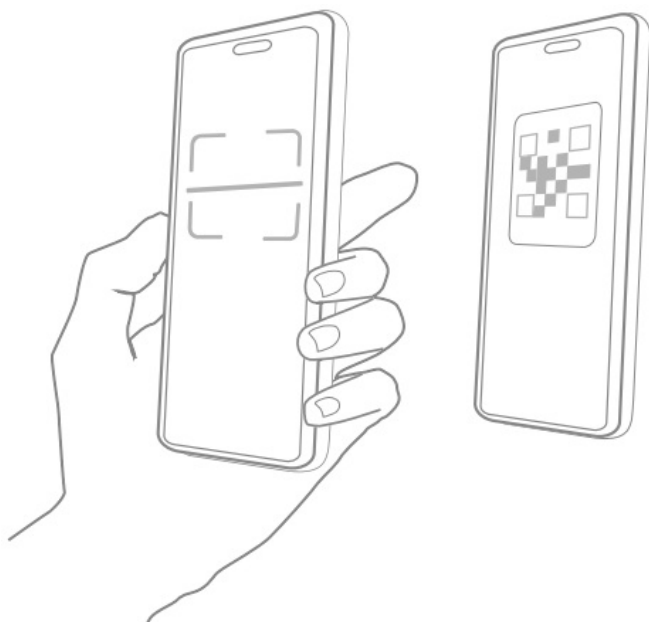
1. Find the camera you want to share on the App homepage or camera setting page. Find the button and enter the sharing page



2. Click “Invite”, and a QR code will be generated for sharing.
3. For the members you need to share with, find “Add Friend’s Camera” in the “User” page to enter the scanning page.



4. Scan the QR code on your mobile phone, and you will receive the confirmation notification after success. The sharing will be completed after you agree.



Charge the camera

App will remind you to charge your camera when the battery is low. Please use the Micro USB cable to plug into the 5V/1.5A charging adaptor to charge the camera. During charging, the camera indicator light is solid yellow, and when the camera is fully charged, the indicator light will turn into solid green. It will take 10 hours to fully

charge the camera.

If a solar panel is connected permanently to the camera, recharging is not required.

Indicator light status

Mode	Status
Working mode	Blue
Sleep mode	Off
Charging mode	Yellow
Fully charged mode	Green

Product specification

Item	Specification
Camera lens	Field of view: 123°
Image resolution	Max. 2560 x 1440
Video bit rate	Adaptive
Storage media	Micro SD card (Up to 128GB)
Battery capacity	5200mAh
Adaptor requirement	5V/1.5A
Size	84 x62 x96(mm)

Firmware upgrade

When you connect your camera through the App, it will prompt you for latest firmware upgrade. You can also manually check the firmware upgrade in the settings of the App.



Please make sure that your camera is fully charged or connected to the power adaptor before upgrading the firmware. Do not disconnect power supply during the upgrade

ISED Statement

This device contains licence-exempt transmitter(s) /receiver(s) that comply with Innovation, Science and Economic Development Canada's licence-exempt RSS(s). Operation is subject to the following two conditions:

1. This device may not cause interference.
2. This device must accept any interference, including interference that may cause undesired operation of the device.
 - (a) The digital apparatus complies with Canadian CAN ICES -3 (B)/NMB-3(B).
 - (b). This device meets the exemption from the routine evaluation limits in section 2.5 of RSS 102 and

compliance with RSS 102 RF exposure, users can obtain Canadian Information on RF exposure and compliance.

This equipment complies with Canada radiation exposure limits set forth for an uncontrolled environment. This equipment should be installed and operated with minimum distance 20cm between the radiator & your body.

FAQ

1.Q:Camera permission management: How to invite family and friends to use my camera together?

2.Q:Why doesn't the Wi-Fi name appear when I connect to Wi-Fi?

3. Q:Will the camera show red lights when night vision is activated?

A: The built-in infrared lamp beads make the camera only show some dim red lights when night vision is activated, but the image quality is still clear under low light environment.

4.Q:What are the requirements for Wi-Fi?

A: Please use a 2.4GHz wireless network. The device does not support the 5GHz wireless network. Meanwhile, please set the Wi-Fi authentication method to WPA2-PSK or other lower level of security method. A password is required.

5.Q:How far should the camera be placed from the router?

A: After testing, the Wi-Fi connection distance can normally reach up to 150 meters in the open area. However, the actual situation depends on the strength of Wi-Fi and its surrounding environment (thick walls, electromagnetic devices, large metal objects will all cause interference to the Wi-Fi signals). If the camera connection signal is weak or unstable, please place the camera as close to the router as possible. Wi-Fi repeaters can be used to extend range.

6.Q:What is the maximum length of recording time?

7.Q:How to quickly view videos by category?

8.Q: What should I do when the device malfunctions?

A: Long press the power bottom to restart the camera. If there is no response, you can open the back shell of

the camera, and then open the rubber plug on the side. Press the reset button with a pointed object to reset power, then long press the power button to restart the camera.

FCC warning

FCC ID: 2BAQT-ITRONCAM

This device complies with part 15 of the FCC Rules. Operation is subject to the following two conditions:

1. this device may not cause harmful interference.
2. this device must accept any interference received, including interference that may cause undesired operation. Any changes or modifications not expressly approved by the party responsible for compliance could void the user's authority to operate the equipment.

NOTE: This equipment has been tested and found to comply with the limits for a Class B digital device, pursuant to Part 15 of the FCC Rules. These limits are designed to provide reasonable protection against harmful interference in a residential installation. This equipment generates, uses and can radiate radio frequency energy and, if not installed and used in accordance with the instructions, may cause harmful interference to radio communications. However, there is no guarantee that interference will not occur in a particular installation.

If this equipment does cause harmful interference to radio or television reception, which can be determined by turning the equipment off and on, the user is encouraged to try to correct the interference by one or more of the following measures:


- Reorient or relocate the receiving antenna.
- Increase the separation between the equipment and receiver.
- Connect the equipment into an outlet on a circuit different from that to which the receiver is connected. –
- Consult the dealer or an experienced radio/TV technician for help.

To maintain compliance with FCC's RF Exposure guidelines, this equipment should be installed and operated with minimum distance between 20cm the radiator your body: Use only the supplied antenna.

www.iTronCAM.com

New Zealand



 <p>ITRONCAM Smart Battery AI Camera Instruction Manual</p>	<p>ITRONICS ITRONCAM Smart Battery AI Camera [pdf] User Manual ITRONCAM Smart Battery AI Camera, ITRONCAM, Smart Battery AI Camera, Battery AI Camera, AI Camera, Camera</p>
------------------------------------------------------------------------------------------------------------------------------------------------------	--------------------------------------------------------------------------------------------------------------------------------------------------------------------------------------------------

References

- [iTron Mobile Application – Download the iTron Mobile Application](#)
- [iTronCam Smart Security Camera – Introducing our revolutionary security camera system with direct-to-cloud recording.](#)
- [User Manual](#)