



iTOONER ND7008 IPC Split Screen Decoder User Manual

[Home](#) » [iTOONER](#) » iTOONER ND7008 IPC Split Screen Decoder User Manual 

iTOONER

IPC Split Screen Decoder
ND7008 & ND7016 Product Manual
Compatible with Hikvision,Dahua IPC Split screen



Decoding Channels:

© ND7008

Decoding 9 channels

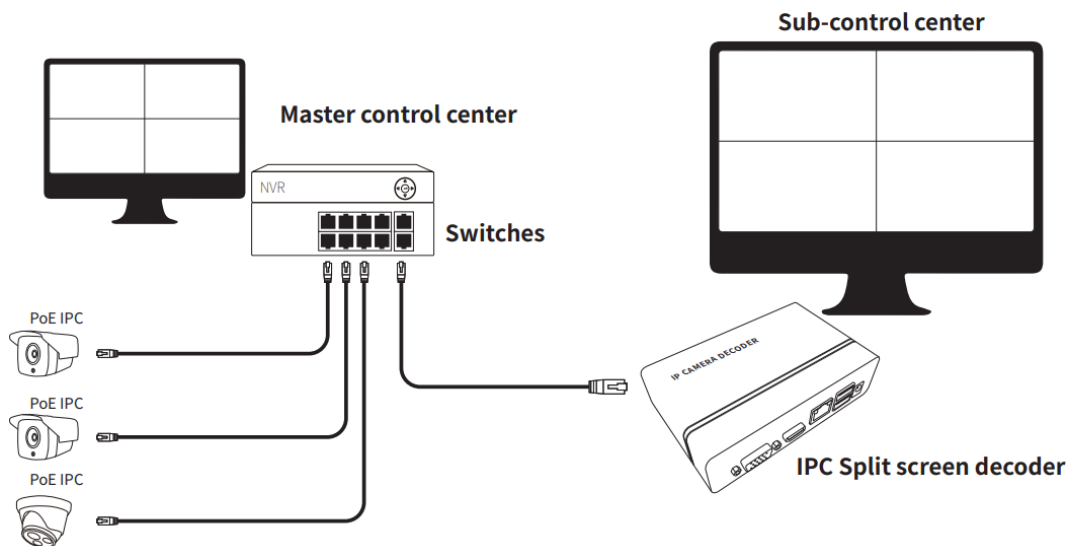
© ND7016

Decoding 16 channels

Contents

- [1 Use application](#)
- [2 Installation And Use](#)
- [3 Reminder](#)
- [4 Packing list](#)
- [5 Documents / Resources](#)
- [6 Related Posts](#)

Use application



Installation And Use

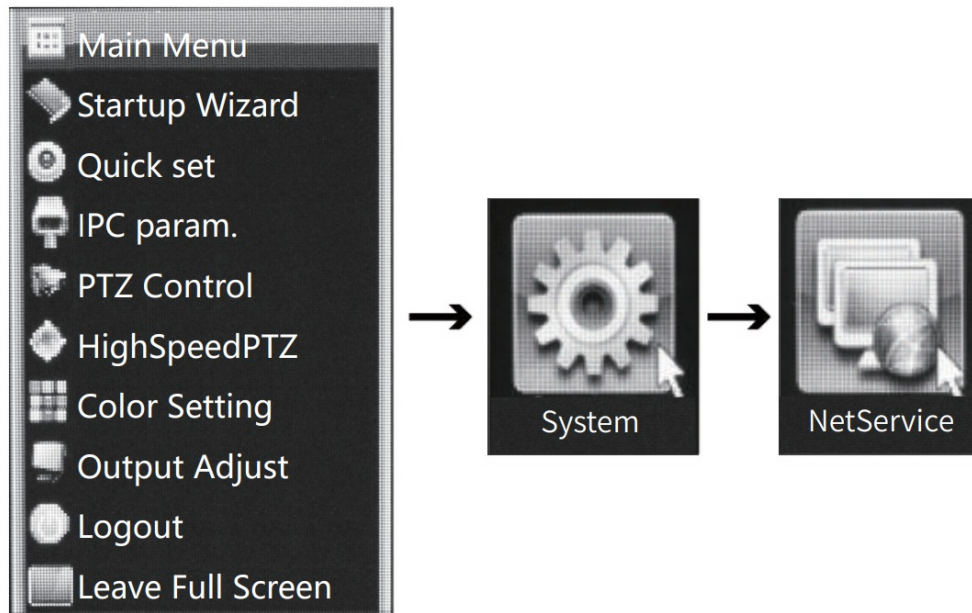
① Device access

IPC Split screen decoder, through a network cable to access networked PoE/Core network switch Connect to the corresponding display via VGA or HDMI interface for intelligent split-screen display USB mouse, then sub-control center system operation can be performed.

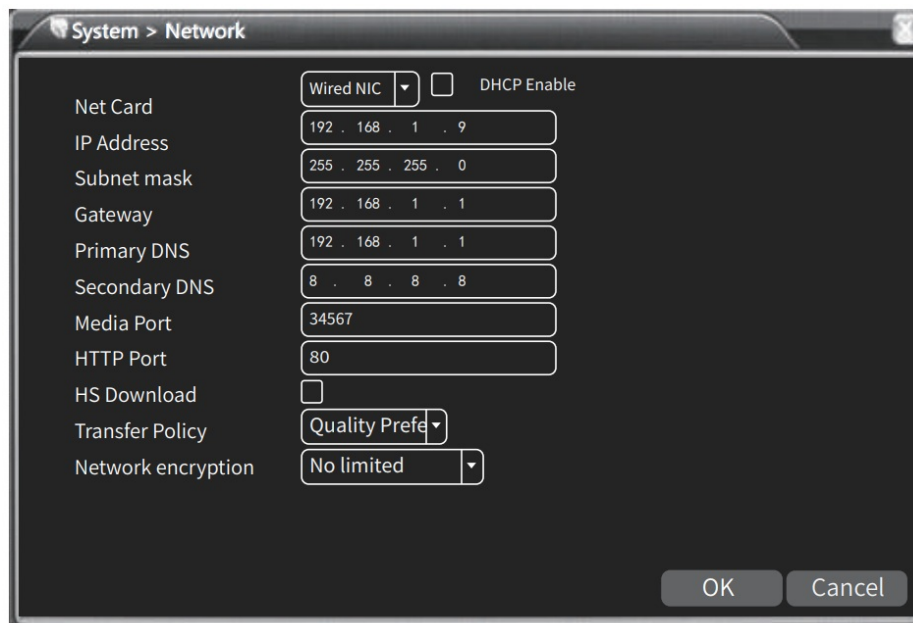
IPC Split screen decoder IP address setting

Enter the IPC split-screen decoder operation interface, right-click the mouse to operation menu, select click Main menu (user name: admin password: empty) Enter [System]

Select [NetService]

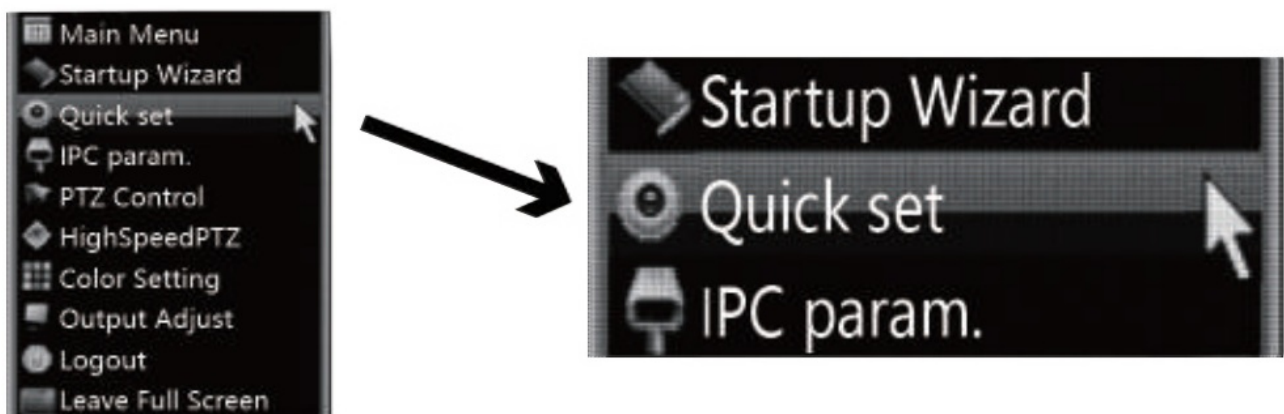


Go to [Network Settings] and change to the IP address of the same network segment.

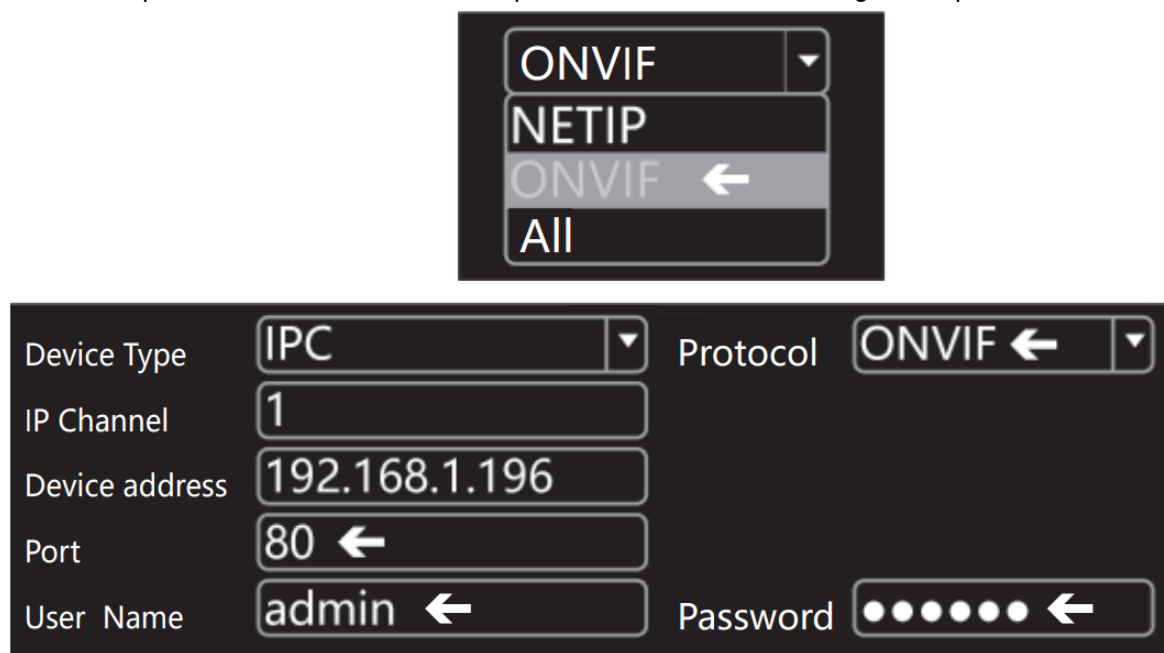


IPC Split screen decoder System Setting

Enter the IPC split-screen decoder operation interface, right-click the mouse to the operation menu, select click [Quick set] Enter [Digital Channel Configuration]. Main Menu



According to the desired screen, add and delete IPC addresses, and enter [Digital Channel Configuration] to select [ONVIF]select an IPC channel, manually add the protocol to [ONVIF], and change the port to [9988] or [80], the username and password are the IPC account password and the IPC setting is completed.



Click [Search] to select the IPC that has been set, click [Quick set] to complete the setting, click [Apply] can complete the IPC split-screen display.

Reminder

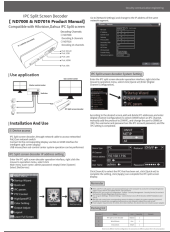
- When adding IPC will appear user password, please go to the computer to access the corresponding brand page to access the IPC and obtain the IPC user password.
- Hikvision IPC you can go to [Configuration – System – Security Management – Security Service] to uncheck the function [Enable illegal login lock]. then save it.
- You can go to [Settings – Network Settings – Connections] to turn off the function [ONVIF Validation] and save it.
- After the sub-control room corresponding camera, IP address is added, the system operation password should be increased. Non-management personnel is not allowed to adjust the screen at will.
- Power adapter requirements: DC 12V1A, DC is 5521 interface, this device does not include a power adapter.

Packing list

Number	Name	Unit Quantity		Remark
1	IPC Split screen decoder	Station	1	
2	Wired Mouse	One	1	
3	Instructions	Share	1	

Note: Due to different machine configuration, the accessories are different, please refer to the actual product.

Documents / Resources



[iTOONER ND7008 IPC Split Screen Decoder](#) [pdf] User Manual
ND7008, IPC Split Screen Decoder