

[Skip to content](#)

Manuals+

User Manuals Simplified.

iTECH ITFSQ21 Smart Watch User Manual



[Home](#) » [iTech](#) » iTECH ITFSQ21 Smart Watch User Manual

Contents [hide](#)

[1 iTECH ITFSQ21 Smart Watch](#)

[2 WHAT'S IN THE BOX?](#)

[3 SET UP YOUR SMARTWATCH](#)

[4 BASICS](#)

[5 Changing Watch Faces](#)

[6 Apps And Features](#)

[7 Additional Features](#)

[8 REGULATORY AND SAFETY](#)

[9 UPDATE, RESTART, AND ERASE](#)

[10 Documents / Resources](#)

[11 Related Posts](#)

iTECH

iTECH ITFSQ21 Smart Watch



“This iTech Wearables smartwatch is NOT a medical device. This device and related software and applications are NOT intended for use in the diagnosis of disease or other conditions, or in the cure, mitigation, treatment or prevention of disease. Users should NOT interpret or take clinical action based on the device output without consultation of a qualified healthcare professional.”

WHAT'S IN THE BOX?

iTech Fusion 2 Smartwatch User Guide:

Everything you need to know about the iTech Fusion 2 Smartwatch.

What's in the box?

Your iTech Fusion 2 Smartwatch box includes:

- iTech Fusion 2 Smartwatch (Color and material vary)
- Clamp Charging Cable



The interchangeable straps on the iTech Fusion 2 Smartwatch come in a variety of colors and materials. Additional straps for the iTech Fusion 2 Smartwatch are sold separately. Refer to proper URL or QR Code for additional bands (that are the proper size).

Charging Your Smartwatch

A fully charged iTech Fusion 2 Smartwatch has an extended battery life of up to 15 days (standby time).

Battery life and charge cycles vary based on usage.

1. Plug the charging cable into the USB port on your computer or a UL-certified USB wall charger. We recommend using the USB port on your computer.
2. Insert the smartwatch into the appropriate charging cable section. A charging screen appears on the screen to indicate that your smartwatch is charging.

Note: Your iTech Fusion 2 Smartwatch takes about 1-2 hours to fully charge.



Note: Both the iTech Fusion 2 Square and Round Smartwatches do share the same charging mechanisms.

SET UP YOUR SMARTWATCH

The free iTech Wearables App is compatible with most iPhones and Android Phones. A smartphone is required for call, text, and smartphone app notifications.

To Get Started:

Find the iTech Wearables App on one of the locations below, depending on your smartwatch or smartphone. Search

'iTech Wearables'.

METHOD 1



Can be found for free on iOS/Apple devices via the Apple App Store.

METHOD 2



Can be found for free on Google/Android devices the Google Play Store.

METHOD 3



You also have the option of scanning this QR code with your phone camera or an app to access a link to the app.

SYSTEM REQUIREMENTS

(Android 9.0 and up)
(iOS 13.0 and up)

Make sure your phone's bluetooth is turned on and enabled by going into your device's settings and turning on the bluetooth setting.

Note: Do

not use your mobile device's bluetooth pairing to pair to the watch. To properly connect your iTech Wearables smartwatch, follow the pairing instructions within the mobile application. If you have already connected your phone to the smartwatch disconnect and "forget" the bluetooth connection prior to setting up your watch through the application.

For more information, manuals or application information, please visit the Help Center at <https://www.itechwearables.com/>

***YOUR DEVICE WILL ONLY WORK WITH THE ITECH WEARABLES APP ACCESSED BY THE QR CODE ABOVE.**

Download and install the iTech Wearables App: The application will ask for permissions once installed and your account has been set up (New Users). We highly encourage the user to allow all notifications & pairing access to their smartphones for complete functionality.

Android Users: You will be asked to allow the iTech Wearables App to access information in your device's native settings once your account has been set up. Not enabling these settings may prevent the application from working correctly.

Once the app is installed, open it to create an account, following the on-screen prompts to help you get set up. Once your account is set up, the application will help you connect to your smartwatch (We highly encourage the user to allow all notifications & pairing access to their smartphones.)

To connect & sync your app to your smartwatch, please follow the on-screen instructions while setting up your account.

BASICS

Learn how to best navigate your iTech Fusion 2 Smartwatch.

Power On/Off Your Smartwatch

Tap and hold the screen of your smartwatch for 5 seconds until you see the iTech Fusion Smartwatch logo appear on the watch screen, indicating the watch has powered on.



On the main clock face, swipe down from the top of the screen to reveal the notification panel. Tap the 'Settings' icon here and you will be taken to the settings screen. Scroll down to 'Power off'. After tapping on this selection, the smart-watch will ask if you're sure you would like to turn off the device. Once you tap on the blue check mark, the device will power off immediately.

Motion Gesture

Allows you to rotate your wrist to turn on your watch screen. Tap the 'Menu' located on the top left of the home screen. Then tap on 'Settings'. From here tap on, 'Motion Gesture', to access this function and set it up. You can control the time in which this feature is active throughout the day. If you want this feature to always be on, set the time constraints to be 12:00AM to 12:00AM. Using this feature will consume more battery.

Brightness

Control the Brightness on your Smartwatch. From the Settings menu on your iTouch Sport, tap the brightness icon. Then tap again to begin adjusting the brightness by tapping your finger on the screen. Once you have set the brightness the way you like, tap the back button on the top left hand corner to exit and save your changes.

Changing Watch Faces



Change

your watch face from the iTech Fusion 2 Smartwatch

The iTech Fusion 2 Smartwatch comes with four interchangeable watch faces built into it. From the main clock face screen on your smartwatch, hold the center of the screen for 3 seconds to switch the clock face. Swipe from left to right to see the selections. Tap on the clock face you want. Your smartwatch will vibrate once the clock face has changed.

Change your watch face from the iTech Wearables App

Setting a Custom Watch Face: Create your own watch face! You can add your own image, format text, and put your favorite features on display.

In the iTech Wearables App, from the Watch Faces page, tap on the Custom watch face panel to begin editing. Hit Save/Done to apply.

NAVIGATION TIPS & FEATURES

Your iTech Fusion 2 Smartwatch is a full touch device, you can swipe the screen in many directions to interact.

Apps And Features

Exiting A Section Or App On A Watch

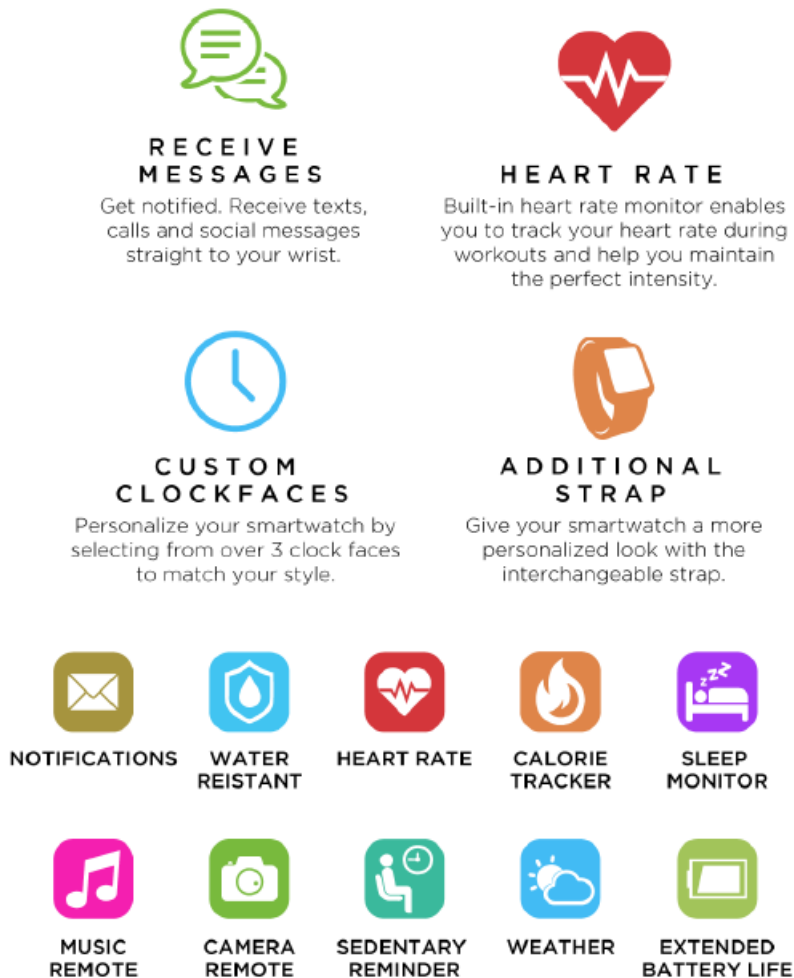
To exit an area you're in on the watch, you can swipe right on the screen. This is universally how you go back on this watch.

View Messages

On the main clock face, swipe up from the bottom of the screen to reveal your recent messages. (This is the only way to view older messages you received but may not have seen right away).

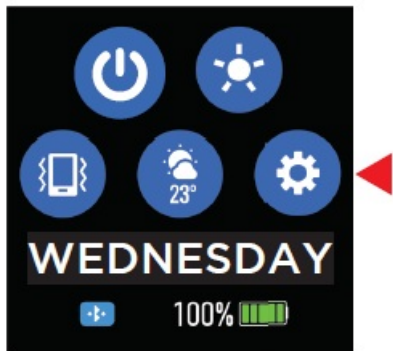
Access the Notification Panel

Like many phones, your watch has a notification panel. Your notification panel contains shortcuts that quickly take you wherever on the watch you would like to go. To view this, on your main clock face, swipe down from the top of the screen. You can turn off your watch, view weather, control vibration, and more! To exit this section, simply swipe up from your smartwatch.



Haptic Feedback Control

Your watch vibrates to alert you of any notifications or reminders you need. But sometimes if you don't want the vibration, it can become a bother. That's why you can control if you want vibration on or off for your watch. To turn off vibration on your watch quickly, on your main clock face, swipe down to reveal the notification panel. Near the 'Weather' icon, you will see a small device icon, this is the vibration control section. Tap it to turn it off/on as you need to. Shutting off vibration will also provide an even longer battery life. Swipe from right to left on the screen to navigate through the features of your watch. Simply tap the screen to activate a feature.

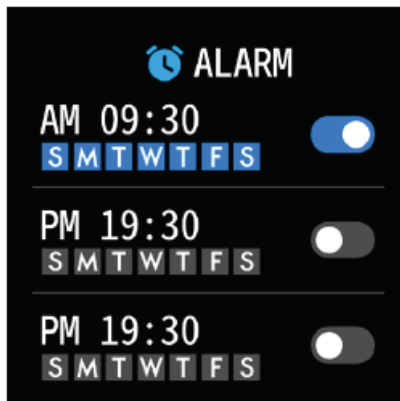


Timekeeping

Alarms vibrate to alert you at a time you have set. Set up to three alarms to occur once or on multiple days of the week via the iTech Wearables App.

Controlling Alarms On Your Smartwatch

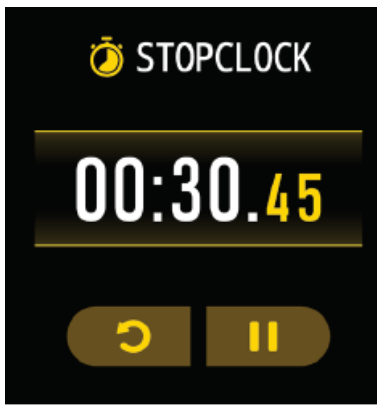
You can toggle alarms on/off right from your smartwatch as well. Swipe down from the main clock face screen to reveal the notification panel. Tap on the 'Settings' icon. Navigate to Alarms and tap on it. Here, you can see the three alarms you've set and have the ability to turn them off/on as you need. Please note: In order for alarm changes to take effect, your smartwatch needs to sync with the iTech Wearables App.



Alarm Settings

Stopwatch

You can also time events with the stopwatch feature on your iTech Fusion 2 Smartwatch. On the main clock face, swipe right and scroll down to the 'Settings' option. Tap on 'Stopwatch' on the next screen. To begin recording a time, hit the 'Play' button. To exit the stopwatch function, swipe right.



Stopwatch Settings

Notifications & Messaging

iTech Fusion 2 Smartwatch can display call, text, social media, and app notifications from your smartphone to keep you informed. The smartwatch and phone device must be within Bluetooth range of each other to receive such notifications.

Set Up Notifications

Check that the Bluetooth on your phone is on and that your phone can receive notifications (often under Settings > Notifications). Then set up notifications:

1. In the iTech Wearables App, tap the 'Menu' icon and tap settings then, go to Watch Notifications.
2. From Watch Notifications, you may select the notifications you wish to receive on your smartwatch

Note: Notification permissions differ between iOS and Android users.

Viewing Incoming Notifications

When your iTech Fusion 2 Smartwatch and smartphone are within range, notifications cause the smartwatch to vibrate. If you don't read the notification when it arrives, you can check it later by navigating to Messages on your smartwatch. To view unopened messages and notifications on your iTech Fusion 2 Smartwatch, on the main clock face screen, swipe up from the bottom of the screen to reveal the Messages screen. Tap on any message found in this section to reveal more information about it. To exit the messages feature, swipe down from the top of the screen or swipe right on the screen.

Manage Notifications

iTech Fusion 2 Smartwatch stores up to 5 notifications, after which the oldest are replaced as you receive new ones.

Turn off Notifications

Turn off all or certain notifications with the iTech Wearables App from Watch Notifications in the settings menu. You can also mute all notifications by turning on Do Not Disturb mode. Learn more about the Do Not Disturb function in the Additional Features section of the manual.

Note for Android Users The 'Other' function was created to help provide notifications from apps you want to receive information from that support hasn't been built for directly. For Android Users, while 'Other' is on, all notifications that appear within your smartphone's notification panel will be displayed by the watch.

Activity & Sleep

iTech Fusion 2 Smartwatch continuously tracks a variety of stats whenever you wear it. The information is then transferred to the iTech Wearables App every time you sync your smartwatch. We recommend syncing your smartwatch to the app at least once a day.

Some Helpful Tips: See your core stats: Steps taken, calories burned, and distance covered. Find your complete history and other information automatically detected by your smartwatch in the iTech Wearables App.

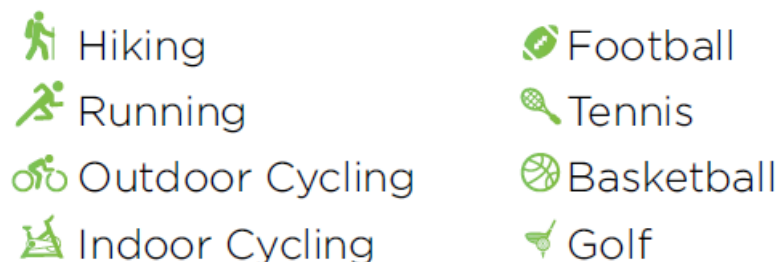
Track Daily Goals

iTech Fusion 2 Smartwatch tracks your progress towards daily goals based on the goals you set when first setting up your account. When you reach your goal, the app will send you a push notification that the goal is completed. If a step goal is achieved, your smartwatch will vibrate and show a celebratory badge.

Fitness And Exercise (Multi Sports Mode)

Track specific exercises, such as running, golf, football, basketball, and more with your iTech Fusion 2 Smartwatch. Your smartwatch is equipped with 8 sports modes. Each exercise tracks specific details such as steps, total time, average heart rate, calories and etc.

Sports modes included are:



Some Helpful Tips:

- For data to be saved, the workout/sport you do must be done actively for at least 3 minutes.
- Once you begin a sports mode, the exercise on the watch may show two pages appear (you'll notice this as two small dots will show at the middle-top of the screen), you can swipe left and right to see the data found on these pages.
- You can perform the sport either near your smartphone or away/not connected to your smart-phone. Once the smartwatch comes within Bluetooth range of your smartphone, it will automatically sync with the app and the mode will appear on your home/dashboard screen in the app.
- Sports modes should be done one at a time. After stopping one mode, ensure that the data is synced to the app first. Then start your second sports mode. Doing multiple modes at once, without syncing to the app will cause data you have acquired to be lost.
- The watch will alert you if the activity time is too short to record. Activities not performed for at least 3 minutes will not be saved to the app/watch.

You can view all of the sports modes you have done for the day as well as the calories burned doing each activity within the Calories card found on the main home page of the iTech Wearables App

Sedentary Reminder

Turn on reminders to move in the app to set a sedentary reminder alert. The sedentary reminder can be enabled in the Settings Menu by tapping on the 'Reminder To Move' selection. When enabled, this feature is active during the hours of 10:00 AM – 6:00 PM.

Set Up Notifications

Your iTech Fusion 2 Smartwatch will automatically track your time asleep and sleep stages (deep sleep, light sleep and time spent awake). To see your sleep quality score and stats, sync your smartwatch when you wake up and check the app.

Learn About Your Sleep Habits

iTech Fusion 2 Smartwatch tracks several sleep metrics including the amount of sleep you get and provides you with an overall sleep score number for that night. It will track your wake time and your light sleep time, along with deep sleep. In-app, you can tap on the Sleep card on your main home screen to see further details about your sleep history. Tapping on your sleep progress graph will allow you to see even more information by providing you with a 'Sleep Summary' for you to review.

rO2 Blood Oxygen Reader

Track your Blood Oxygen level. X-FIVE Smartwatch tracks your Blood Oxygen saturation level throughout the day. Use the Blood Oxygen app on your smartwatch to measure the percentage of oxygen your red blood cells carry from your lungs to the rest of the body. Knowing how well oxygenated your blood is can help you understand your overall health and wellness. To measure and see your real-time saturation level, navigate to the feature on your smartwatch. Swipe left on your smartwatch until you land on the SPO2 page.

Additionally, you can quickly get to this screen by swiping right on the main clock face and scrolling down to 'Blood oxygen – spO2'. Both ways take you to the same screen. Tap on the screen when at the spO2 area. The watch will then vibrate, indicating it is reading your blood oxygen level. Once completed, your watch will vibrate again and display O2 measurement.

Note: Not a medical device. This device and related software are not intended for use in the diagnosis of disease or other conditions, or in the cure, mitigation, treatment or prevention of disease. Users should not interpret or take clinical action based on the device output without consultation of a qualified healthcare professional.

Heart Rate Monitor

The iTech Fusion 2 Smartwatch tracks your heart rate throughout the day. To measure and see your real-time heart rate, navigate to the heart rate feature on your smartwatch. Swipe until you land on the heart rate page.

Additionally, you can quickly get to this screen by swiping right on the main clock face and scrolling down to 'Measure HR'. Both ways take you to the same screen. Tap on the screen when at the heart rate area. The watch will then vibrate, indicating it is reading your heart rate. Once completed, your watch will vibrate again and display your heart rate measurement

Connected GPS

For complete workout stats, recap, route and pace information, make sure to use your smartphone's connected GPS. Review your exercise history via the iTech Wearables App. The Connected GPS feature on the iTech Fusion 2 Smartwatch works with the GPS sensors of your nearby smart-phone.

To use Connected GPS from the main home page of the app, tap on the 'Menu' icon and select Running Mode. A new screen will appear with a start button will appear (iOS users – You may be asked for location permissions here – Please tap 'Allow While Using App' to proceed forward). Tap Start to begin tracking. Connected GPS mode will be enabled until you pause or completely stop it. This screen will showcase your heart rate and calories burned. You will have an option to toggle between this screen and an actual live map of your route. Once completed, you can view your distance traveled and check previous records of your routes.

Music Remote

To remotely control music from your smartwatch, navigate to the music feature on the iTech Fusion 2 Smartwatch (it is the last screen on the watch when swiping left). The music remote allows you to play/pause, skip forward, or skip to previous music from your music apps. Your iTech Fusion 2 Smartwatch is compatible with various applications such as Apple Music, Spotify, and Pandora. However, it may not support other third-party applications.

Camera Remote

To snap photos using your iTech Fusion 2 Smartwatch, navigate to the camera remote function. With the app open, navigate to the settings page and tap Camera Remote. This will launch the built-in app camera (iOS Users: Tapping on Camera Remote will advise you to open up your native camera to take pictures with your watch). To take a picture, tap on the Camera Remote icon on your smartwatch or shake your wrist and your phone will take a picture.

Additional Features

Weather

Once your smartwatch is fully paired to the app, open the iTech Wearables App. Navigate to the settings page, scroll down and tap on 'Weather'. Your location should be automatically found or you can enter your location information in manually. Once done, instantly the watch will update with the latest weather readings.

From the Weather screen on your smartwatch, you can tap the screen to view more weather data. Your smartwatch shows the weather forecast for 5 days and updates hourly (as long as you are connected with the iTech Wearables application on your mobile phone). You can also change the units of measurement for temperature here as well. The weather information is updated every two hours. If your smartwatch cannot update the weather during this timeframe, it will show no information. This normally will only happen if your phone and smartwatch aren't connected. To correct this, use the iTech Wearables application to connect your smartwatch to your phone again. From the home screen in the app, tap on the 'Menu' icon and tap 'Settings' to view more features available for your smartwatch.

Find Device

Tap Find Device under Settings to vibrate your iTech Fusion 2 Smartwatch when paired with the app.

Language

Tap Language under Settings to change the language on your smartwatch. Choose from a variety of languages.

Note: setting the language on your iTech Fusion 2 smartwatch does not change the language setting of the mobile application.

Do Not Disturb

Tap Language under Settings to change the language on your smartwatch. Choose from a variety of languages.

Time Format

Tap on Time Formats under Settings to select between 12 and 24 hour format.

Unit Format

Tap Units under Settings to change the units of measurement reflected on your Smartwatch and/or app. Choose between the metric and imperial systems of measurement for your watch. You can choose other units that you can see in app within this section as well.

Note: For Android Users When you fully connect to this smartwatch, you may see the weather as incorrect or not matching what you see from the forecast you're observing. This is due to Android now preventing some information to be sent from your phone to the watch. Follow the steps above to ensure your weather data is always updated.

REGULATORY AND SAFETY

This equipment has been tested and found to comply with the limits for a Class B digital device, pursuant to part 15 of the FCC Rules. These limits are designed to provide reasonable protection against harmful interference in a residential installation. This equipment generates uses and can radiate radio frequency energy and, if not installed and used in accordance with the instructions, may cause harmful interference to radio communications. However, there is no guarantee that interference will not occur in a particular installation.

If this equipment does cause harmful interference to radio or television reception, which can be determined by turning the equipment off and on, the user is encouraged to try to correct the interference by one or more of the following measures:

- Increase the separation between the equipment and receiver.
- Connect the equipment into an outlet on a circuit different from that to which the receiver is connected.
- Consult the dealer or an experienced radio/TV technician for help. Caution: Any changes or modifications to this device not explicitly approved by the manufacturer could void your authority to operate this equipment. This device complies with part 15 of the FCC Rules. Operation is subject to the following two conditions: (1) This device may not cause harmful interference, and (2) this device must accept any interference received, including interference that may cause undesired operation.

This equipment complies with FCC RF radiation exposure limits set forth for an uncontrolled environment. This device and its antenna must not be located or operated in conjunction with any other antenna or transmitter.

NON-MEDICAL DEVICE

This iTech Fusion 2 Wearables product is NOT a medical device. This device and related software and applications are NOT intended for use in the diagnosis of disease or other conditions, or in the cure, mitigation, treatment or prevention of disease. Users should NOT interpret or take clinical action based on the device output without consultation of a qualified health-care professional.

CAUTION

- Risk of explosion if the battery is replaced by an incorrect type
- disposal of a battery into fire or a hot oven, or mechanically crushing or cutting of a battery, that can result in an explosion ;
- leaving a battery in an extremely high temperature surrounding environment that can result in an explosion or the leakage of flammable liquid or gas ;
- a battery subjected to extremely low air pressure that may result in an explosion or the leakage of flammable liquid or gas.

UPDATE, RESTART, AND ERASE

Update Smartwatch Firmware

If there is a new firmware update available for your iTech Smartwatch, you will receive a pop-up notification to download it within the iTech Wearables App. If you do not receive said notification, tap the 'Menu' icon and then select settings. Scroll down to

Update Firmware where you will see a red dot on the Update Firmware tab, signifying that an update is available. Tap the Update button to begin updating your iTech Fusion 2 Smartwatch. Be sure that your smartwatch remains within

Bluetooth range of your phone while updating. Once your update is completed, your watch will automatically reset.

Restart Your Smartwatch

If you can't sync your iTech Fusion 2 Smartwatch, or if you have trouble with connected GPS or tracking stats, you can restart your smartwatch from your wrist. From the main clock face, swipe down to reveal the notification panel and tap on settings. When in settings, scroll down to 'Power Off' and tap on it. Tap on the blue check mark that appears next to power off your smartwatch. Allow your device a few minutes to fully shut down. Then tap and hold the screen of your smartwatch for 3-5 seconds to turn it back on to complete your restart.

Reset Your Smartwatch

If restarting the smartwatch doesn't address the issue, tap Reset option found in the power menu to reset your iTech Fusion 2 smartwatch and clear all data on it.

Wear And Care

All iTech Fusion 2 Wearable products are meant to be worn all day and night, so it's important to follow a few simple guidelines as you wear and care for your smartwatch.

To keep your band clean and your skin happy, we recommend the following tips:

1. Clean your band and wrist regularly – especially after intense workouts or sweating.
2. Rinse the band with water or wipe it with a small amount of rubbing alcohol. Do NOT use hand soap, dish soap, hand sanitizer, cleaning wipes or household cleaners, which could get trapped beneath the band and irritate your skin.
3. Always pat dry the band before putting it back on

Although the iTech Fusion 2 Smartwatch is IP67 water resistant, it is not IP68 waterproof which means you should not submerge your smartwatch in water deeper than one meter for longer than 30 minutes. We advise not to swim with your smartwatch. However, your iTech Fusion 2 Smartwatch can withstand many splashes, rain, and daily activities such as washing dishes. If your smartwatch gets wet, we advise you to remove it until dry. It is not good for your skin to wear a wet band for long periods of time

WARNING:

Not a medical device. This device and related software are not intended for use in the diagnosis of disease or other conditions, or in the cure, mitigation, treatment or prevention of disease. Users should not interpret or take clinical action based on the device output without consultation of a qualified healthcare professional.

Documents / Resources



[iTECH ITFSQ21 Smart Watch](#) [pdf] User Manual

ITFSQ21, 2AS3PITFSQ21, ITFSQ21 Smart Watch, ITFSQ21, Smart Watch

[Manuals+](#),

- [home](#)
- [privacy](#)