



# ITC Reed Horizontal Bend Installation Guide

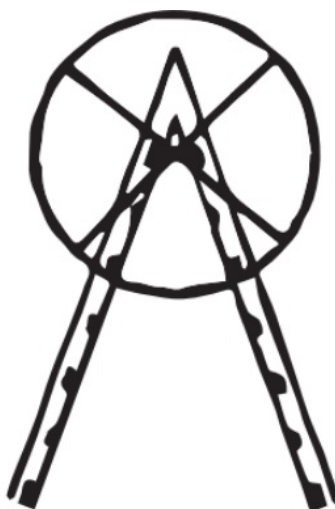
[Home](#) » [ITC](#) » ITC Reed Horizontal Bend Installation Guide 

## Contents

- 1 ITC Reed Horizontal Bend
- 2 PARTS/TOOLS NEEDED
- 3 Documents / Resources
  - 3.1 References
- 4 Related Posts



## ITC Reed Horizontal Bend



## PARTS/TOOLS NEEDED

- Flexible Light



- Mounting Channel (purchased separately)



- Power Drill (not provided)



- Butt Splice Connectors (not provided)



- #4 Flat Head Screws (not provided)



- Isopropyl Alcohol & Primer 94 (not provided)



## SAFETY INSTRUCTIONS

- Disconnect power before installing, adding or changing any component.
- To avoid a hazard to children, account for all parts and destroy all packing materials.
- It is recommended that a 5 Amp standard automotive fuse protection be added to the positive (+) input.

## INSTALLATION CONSIDERATIONS

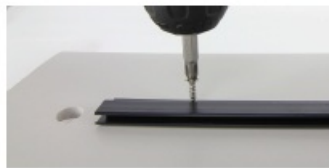
- Do not bend lighting more than necessary. It should only be bent to a 1" radius. Bending to a tight 90° angle could cause damage to the circuit
- Only bend the LED ribbon in one natural direction, do not try to bend in an unnatural direction such as twisting.
- Make sure surfaces are smooth, clean and free of dust and debris before installing this product. Failure to properly clean the surface may result in loss of adhesion.
- Rough surfaces may prevent proper adhesion. If adhesion failure occurs screw-in mounting channels may be

used for installation.

- Contact ITC sales for more information on the mounting channel: 616-396-1355 / [sales@itc-us.com](mailto:sales@itc-us.com)
- Electrical specifications: 1.42 W/Ft | 0.11 A/Ft

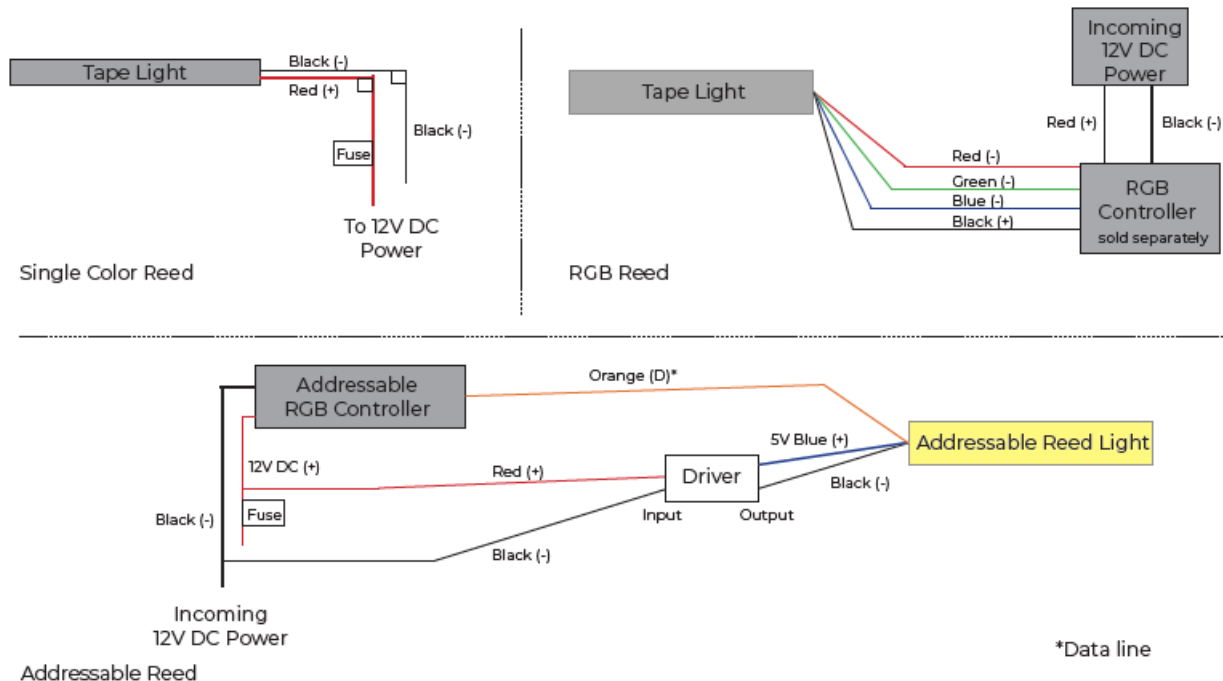
1. Determine the installation location of your tape lighting. Lights can be attached via the adhesive on the back or with a mounting channel.

Clean surface with a mixture of 50% water/50% Isopropyl alcohol. Let surface dry. Apply Primer 94 as recommended by 3M\*. Failure to follow the surface preparation guidelines will void the warranty. Mounting channels are available as screw mount. Screws should be used every 12". If there is adhesive on the back of the light, remove before installing in the channel.



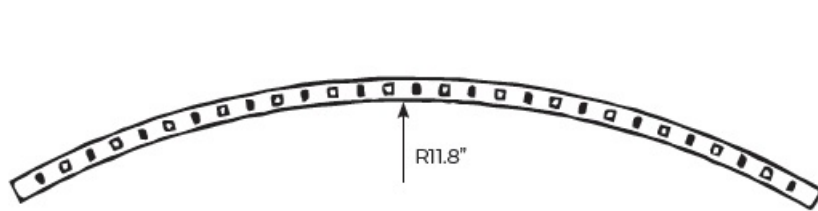
2. Wire the light based on the wiring diagrams below.

Note: Addressable Reed tape light will require one driver (part #810-00719) for every 5.5A of power used. Multiple light lengths can be wired to one driver

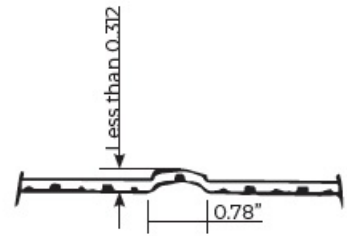


3. Please review the considerations below to ensure a successful installation.

Flexible light cannot be field cut. Field cutting the light will void the warranty



Do not horizontal bend to a radius of less than 11.8"



Do not axial bend to the height of more than 0.312" within 0.78" segment



Do not bend to a radius of less than 1/2"



Do not twist more than 90° over the length of one 24V segment / Two 12V segments



Do not bend flexible light at 90°



Do not bend right at solder joint



Only bend the wire

3030 Corporate Grove Dr. Hudsonville, MI 49426 Phone: 616.396.1355 [itc-us.com](http://itc-us.com)

For warranty information please visit [www.itc-us.com/warranty-return-policy](http://www.itc-us.com/warranty-return-policy) DOC #: 710-00125 • Rev B • 04/14/20

## Documents / Resources

	<p><a href="#">ITC Reed Horizontal Bend</a> [pdf] Installation Guide  Reed Horizontal Bend, Reed Bend, Horizontal Bend, Bend, HTLL12KK-LLLWL-04-X</p>
--	---

## References

- [Register a .US.COM domain today!](#)
- [3M Surface Preparation for 3M VHB Tape Applications](#)
- [ITC Warranty & Return Policy](#)