

[Skip to content](#)

**Manuals+**

User Manuals Simplified.

# ITC Docking Light Installation Guide

[Home](#) » [ITC](#) » ITC Docking Light Installation Guide



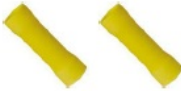


Contents [hide](#)

- [1 ITC Docking Light](#)
- [2 PARTS/TOOLS NEEDED](#)
- [3 IMPORTANT SAFETY INSTRUCTIONS. READ CAREFULLY FOR YOUR PROTECTION AND SAVE ALL INSTRUCTIONS](#)
- [4 Documents / Resources](#)

[4.1 References](#)  
[5 Related Posts](#)

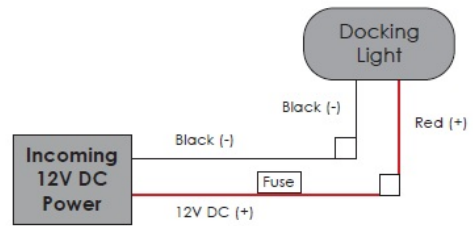
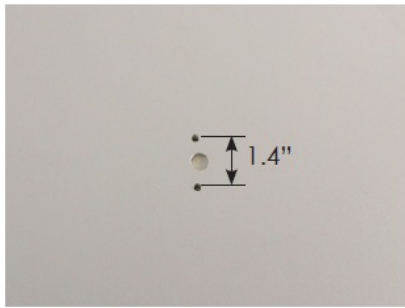


**PARTS/TOOLS NEEDED**

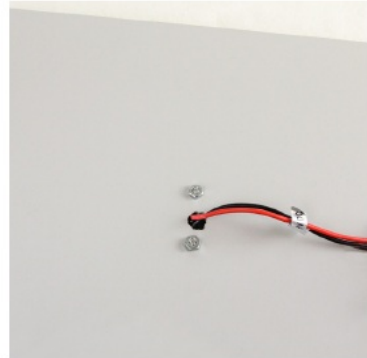
| PARTS/TOOLS NEEDED:   |   |   |  |   |
|---|---|---|--|---|
|  |  |  |  |  |
| Docking Light   | M4 Hex Nuts<br>(not provided)   | Butt Splice Connectors<br>(Not Provided)  | Power Drill  | Application Specific<br>Sealant<br>(not provided)                                     |

**IMPORTANT SAFETY INSTRUCTIONS. READ CAREFULLY FOR YOUR PROTECTION AND SAVE ALL INSTRUCTIONS**

- Disconnect power before installing, adding or changing any component.
  - To avoid a hazard to children, account for all parts and destroy all packing materials.
  - It is recommended that fuse protection be added to the positive(+) input.
  - Technical Specs: Voltage: 10 – 14V DC | Current: 0.12A | Wattage: 1.6W
1. Determine the installation location and drill a 1/2" hole for the wire. Drill two mounting holes at 1.4" on center.
  2. Using the wiring diagrams below, wire the light to the incoming 12V DC power. Test the light.



3. Feed the wires back through the hole and push the light into the mounting holes. Use application specific sealant around the light to

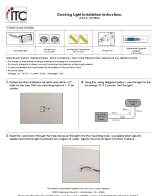


prevent any ingress of water. Tighten the nuts on back to hold it in place.

For warranty information please visit [www.itc-us.com/warranty](http://www.itc-us.com/warranty)

- 3030 Corporate Grove Dr
- Hudsonville MI 49426
- Phone: 616-396-1355 Fax: 616-396-1152 [www.itc-us.com](http://www.itc-us.com)
- [sales@itc-us.com](mailto:sales@itc-us.com) DOC# 710-00193 Revision A: 07/30/21

## Documents / Resources



[ITC Docking Light](#) [pdf] Installation Guide  
69728SS Docking Light, 69728SS, Docking Light

## References

- [Register a .US.COM domain today!](#)
- [ITC Designs that inspire, products that perform.](#)

## Manuals+

- [home](#)
- [privacy](#)