



ITC 21055 VersiControl RGB Control Pad Instruction Manual

[Home](#) » [ITC](#) » ITC 21055 VersiControl RGB Control Pad Instruction Manual 

ITC 21055 VersiControl RGB Control Pad Instruction Manual



Contents

- [1 PARTS / TOOLS NEEDED](#)
- [2 Safety Instructions](#)
- [3 INSTALL 21055 CONTROL PAD](#)
- [4 CONNECT CONTROL PAD](#)
- [5 OPERATION](#)
- [6 Support](#)
- [7 Documents / Resources](#)
 - [7.1 References](#)
- [8 Related Posts](#)

PARTS / TOOLS NEEDED

1. VersiControl RGB 4-Zone or 2-Zone Smart Pad



2. RGB Lighting (Varies)



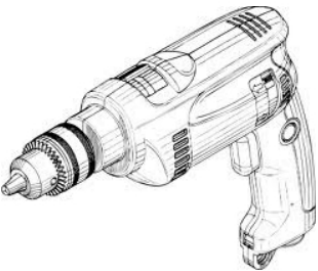
3. Mounting Screws x 2



4. 2" Hole Saw Bit (not provided)



5. Power Drill



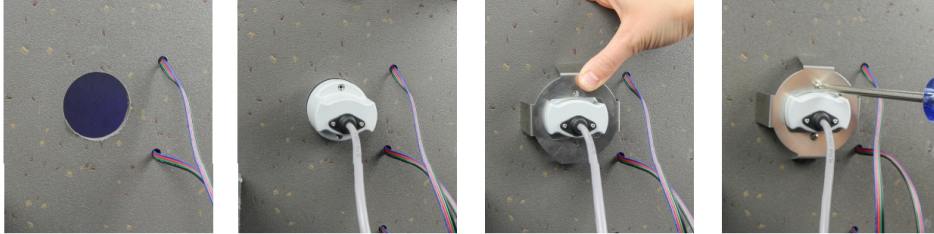
Safety Instructions

- Disconnect power before installing, adding or changing any component.
- To avoid a hazard to children, account for all parts and destroy all packing materials.
- Do not install any luminaire assembly closer than 6" from any combustible materials.

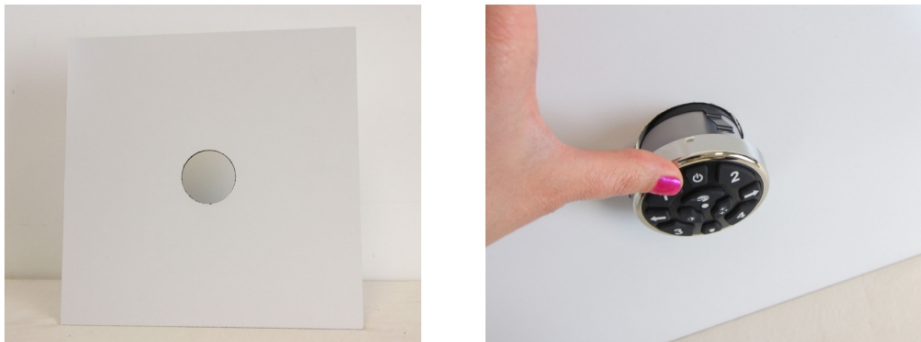
- Positive (+) inputs require a fuse if the attached wire leads are not rated to handle the max current.

INSTALL 21055 CONTROL PAD

Determine the installation location of your control pad. Note the control module comes with a 7" long cord so the control pad will need to be located near the module. Drill a 2" hole and insert the control pad. Install the mounting bracket using the two M2x8mm stainless steel #10 torx head screws provided. Do not fully torque screws until both have been partially installed.

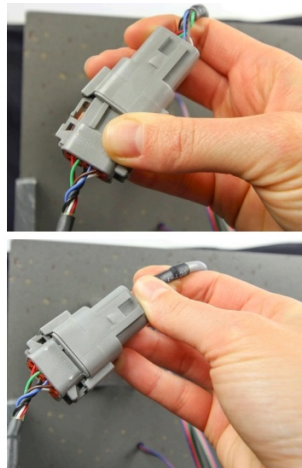
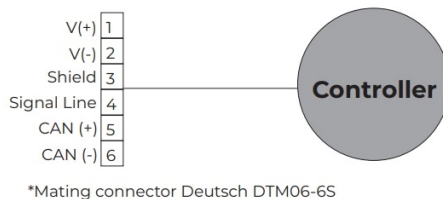


INSTALL 21057 CONTROL PAD: Determine the installation location of your control pad. Note the control module comes with a 7" long cord so the control pad will need to be located near the module. Drill a 2.125" hole and insert the control pad. Note, this version will only work with a 1/8" thick mounting surface.



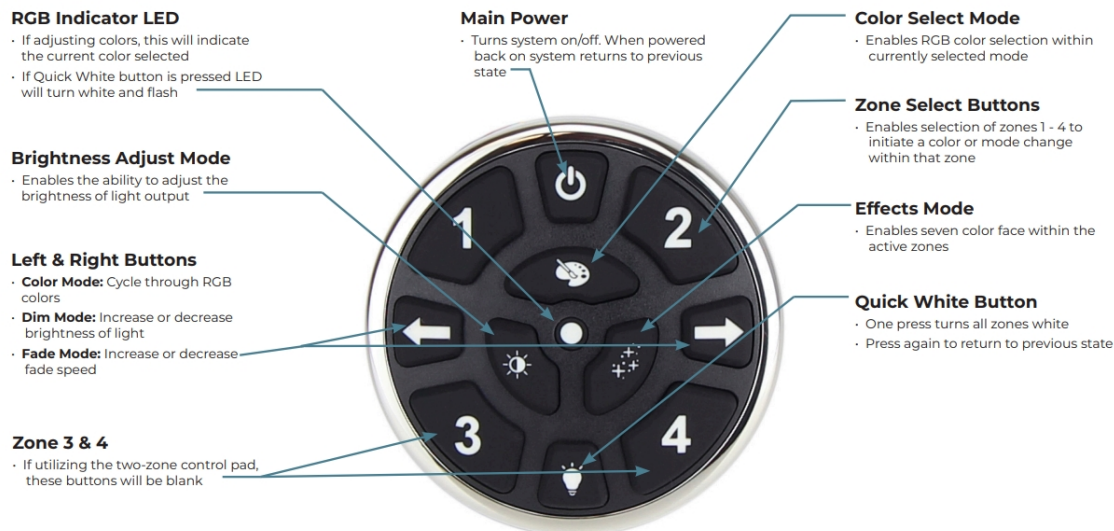
CONNECT CONTROL PAD

Insert the connector on the control pad into the connector on the module.



OPERATION

Below is the keypad overview, for more detailed operational instructions, review your owners manual or visit <http://www.itc-marine.com/product-category/lighting/versicolor-rgb/>



Note: To reset the Bluetooth passcode and clear lock zones, press and release both arrow keys at the same time.

Support

3030 Corporate Grove Dr.
Hudsonville, MI 49426
Phone: 616.396.1355
itc-us.com

For warranty information please visit www.itc-us.com/warranty-return-policy
DOC #: 710-00026 Rev E 08/10/21

Documents / Resources

	<p>ITC 21055 VersiControl RGB Control Pad [pdf] Instruction Manual 21055, 21057, 21055 VersiControl RGB Control Pad, 21055, VersiControl RGB Control Pad, RGB Control Pad, Control Pad, Pad</p>
--	--

References

- [ITC Warranty & Return Policy](#)