



# iSMA CONTROLLI iSMA-D-PA15C-B1 HMI Panel Instruction Manual

[Home](#) » [iSMA CONTROLLI](#) » iSMA CONTROLLI iSMA-D-PA15C-B1 HMI Panel Instruction Manual 

## Contents

- [1 iSMA CONTROLLI iSMA-D-PA15C-B1 HMI Panel](#)
- [2 Product Information](#)
- [3 Product Usage Instructions](#)
- [4 SPECIFICATION](#)
- [5 DIMENSION](#)
- [6 INSTALLATION GUIDELINE](#)
- [7 Documents / Resources](#)
  - [7.1 References](#)
- [8 Related Posts](#)

# iSMA

iSMA CONTROLLI iSMA-D-PA15C-B1 HMI Panel



## Product Information

- Model: iSMA-D-PA15C-B1
- Power supply: Panel power input
- Power supply adapter: Included
- Interface: Available
- Operating system: Not specified
- Display: Available
- Aspect ratio: Not specified
- Resolution: Not specified
- Ingress protection rating: Not specified
- Temperature: Not specified
- Operation humidity: Not specified
- Connectors: Not specified
- Dimension: Not specified
- Response time: Not specified
- Housing material: Aluminum alloy enclosure, color black, Bezel thickness 3 mm

## Product Usage Instructions

### 1. Installation Instruction (page 1):

- SNAP JOINT INSTALLATION: Follow the instructions provided in the user manual for snap joint installation.
- WALL-MOUNT INSTALLATION: Follow the instructions provided in the user manual for wall-mount installation.

### 2. Installation Instruction (page 2):

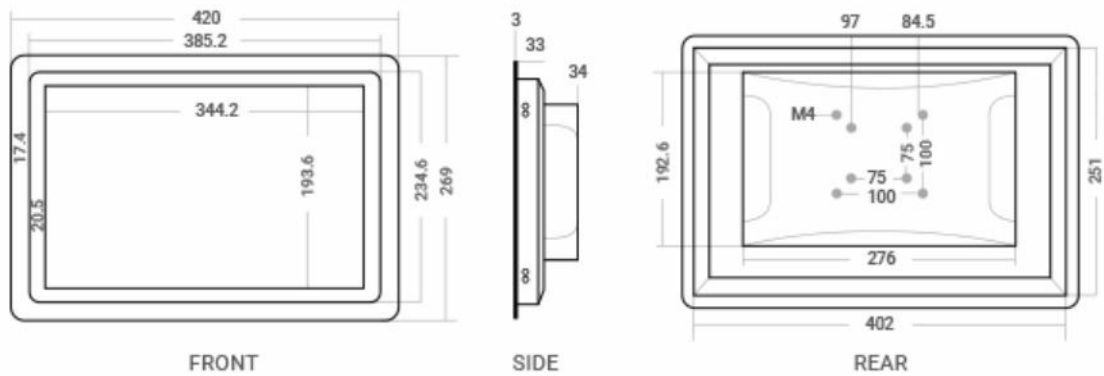
- INSTALLATION GUIDELINE: Before using or operating the device, read the instruction provided in the user manual. If you have any questions, contact the iSMA CONTROLLI Support Team at [support@ismacontrolli.com](mailto:support@ismacontrolli.com).

**Note:**

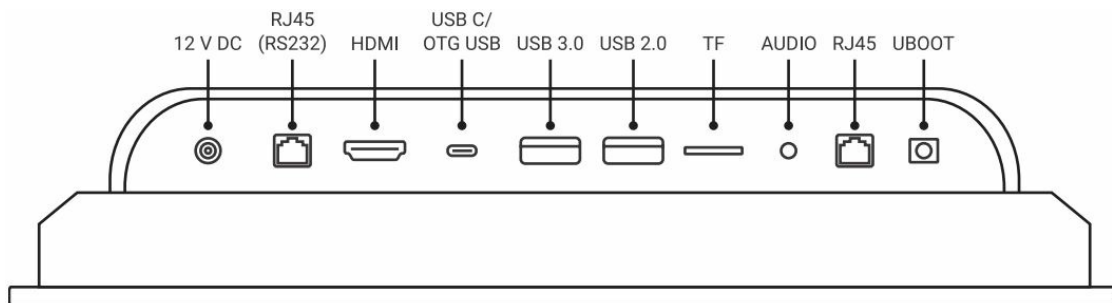
Electrical installation of this product must be done in accordance with national wiring codes and conform to local regulations. Refer to the provided Installation Guideline (1st Issue rev. 1 | 05/2022) available on [www.ismacontrolli.com](http://www.ismacontrolli.com) for more information.

SPECIFICATION	
Power supply	110-240 V AC, 50/60 Hz
Panel power input	12 V DC
Power supply adapter	EU, UK or US
Interface	IP, TF/SD, RS232 Card, USB 3.0, USB 3.0/OTG USB
Operating system	Android 7.1
Display	15,6", 10-point capacitive screen
Aspect ratio	16:9
Resolution	1920×1080
Ingress protection rating	IP65 – for front panel
Temperature	Operating: -10°C to +60°C (14°F to 140°F) Storage -10°C to +60°C (14°F to 140°F)
Operation humidity	10 to 80%
Connectors	Separable, max 2.5 mm2 (18 – 12 AWG)
Dimension	420.0×269.0×70.0 mm (16.535×10.591×2.756 in)
Response time	5 ms
Housing material	Aluminum alloy enclosure, color black, Bezel thickness 3 mm

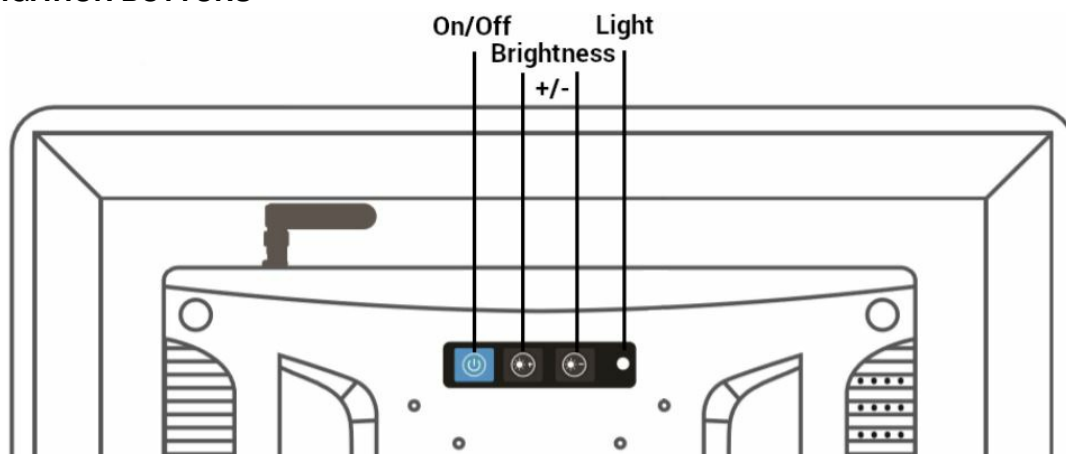
**DIMENSION**



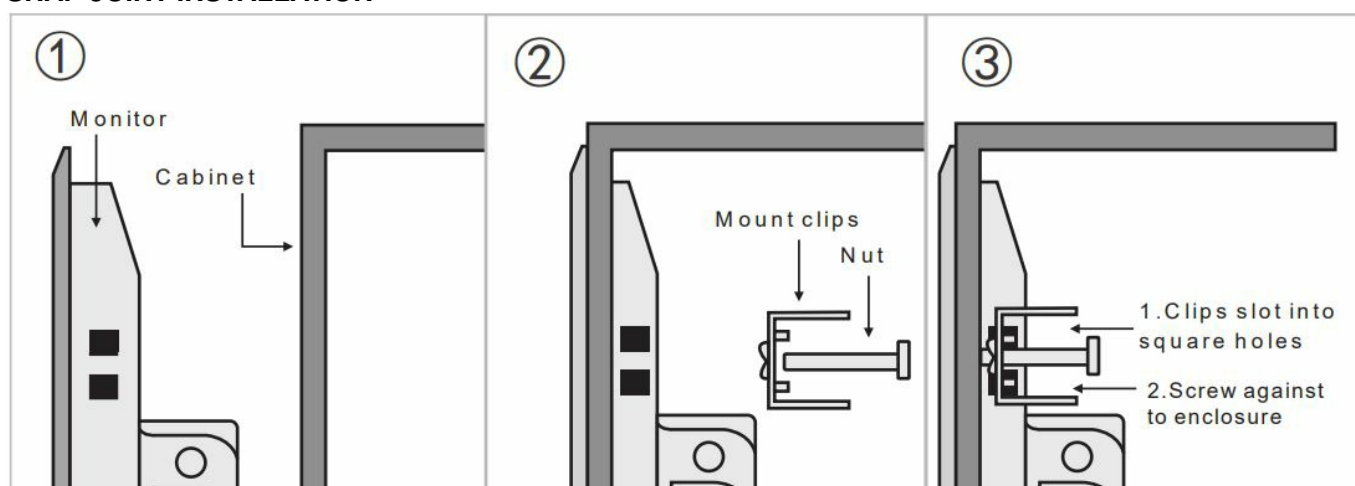
**INTERFACE**



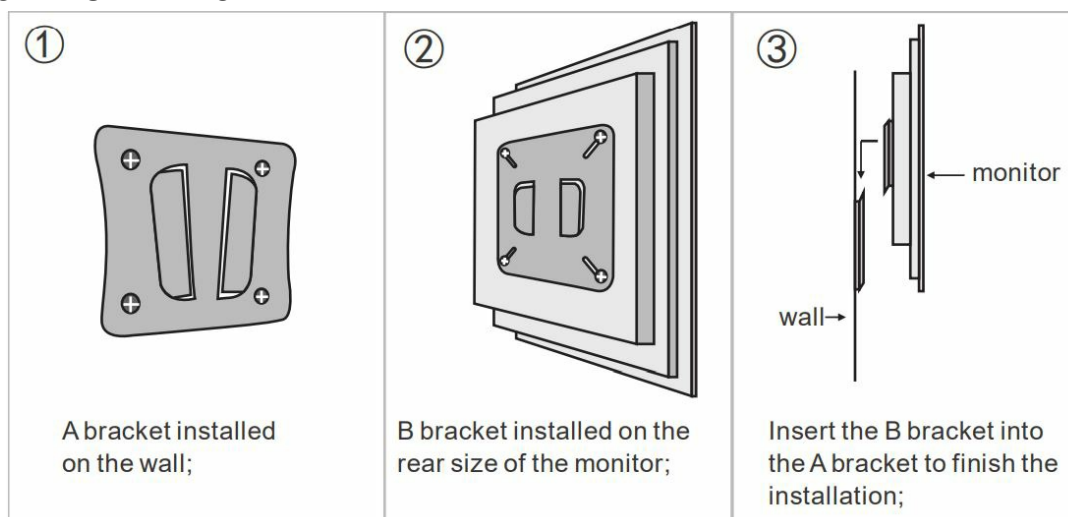
## REAR NAVIGATION BUTTONS



## SNAP JOINT INSTALLATION



## WALL-MOUNT INSTALLATION



## WARNING

- Note, incorrect wiring of this product can damage it and lead to other hazards. Make sure the product has been correctly wired before turning the power ON.
- Before wiring, or removing/mounting the product, be sure to turn the power OFF. Failure to do so might cause an electric shock.
- Do not touch electrically charged parts such as the power terminals. Doing so might cause an electric shock.
- Do not disassemble the product. Doing so might cause electric shock or faulty operation.
- Use the product within the operating ranges recommended in the specification (temperature, humidity, voltage, shock, mounting direction, atmosphere etc.). Failure to do so might cause fire or faulty operation
- Firmly tighten the wires to the terminal. Insufficient tightening of the wires to the terminal might cause fire.
- Do not place the monitor on an unstable place.
- Do not expose the monitor directly in sunlight and other heat sources.
- Do not step on the power cord or make the power cord entwined.
- Clean the monitor with dry soft fabric (volatile matter not allowed).
- Do not contact with or be exposed to inappropriate temperatures, solvents, acid, water or moisture.
- Avoid fragmentation, corrosion and any other damage to products or components (such as shell, LCD/LED panel, port, circuits etc.) caused by insects and mice or any other things inserted.
- Please place it in a suitable location, such as mounted on the wall, or hanging from the ceiling, and install it under the guidance of a professional.

## INSTALLATION GUIDELINE

Please read the instruction before use or operating the device. In case of any questions after reading this document, please contact the iSMA CONTROLLI Support Team ([support@ismacontrolli.com](mailto:support@ismacontrolli.com)).

- Before wiring or removing/mounting the product, make sure to turn the power off. Failure to do so might cause an electric shock.
- Improper wiring of the product can damage it and lead to other hazards. Make sure that the product has been correctly wired before turning the power on.
- Do not touch electrically charged parts such as power terminals. Doing so might cause an electric shock.
- Do not disassemble the product. Doing so might cause an electric shock or faulty operation.
- Use the product only within the operating ranges recommended in the specification (temperature, humidity, voltage, shock, mounting direction, atmosphere, etc.). Failure to do so might cause a fire or faulty operation. Firmly tighten the wires to the terminal. Failure to do so might cause a fire.
- Avoid installing the product in close proximity to high-power electrical devices and cables, inductive loads, and switching devices. Proximity of such objects may cause an uncontrolled interference, resulting in an instable operation of the product.
- Proper arrangement of the power and signal cabling affects the operation of the entire control system. Avoid laying the power and signal wiring in parallel cable trays. It can cause interferences in monitored and control signals.
- It is recommended to power controllers/modules with AC/DC power suppliers. They provide better and more

stable insulation for devices compared to AC/AC transformer systems, which transmit disturbances and transient phenomena like surges and bursts to devices. They also isolate products from inductive phenomena from other transformers and loads.

- Power supply systems for the product should be protected by external devices limiting overvoltage and effects of lightning discharges.
- Avoid powering the product and its controlled/monitored devices, especially high power and inductive loads, from a single power source. Powering devices from a single power source causes a risk of introducing disturbances from the loads to the control devices.
- If an AC/AC transformer is used to supply control devices, it is strongly recommended to use a maximum 100 VA Class 2 transformer to avoid unwanted inductive effects, which are dangerous for devices.
- Long monitoring and control lines may cause loops in connection with the shared power supply, causing disturbances in the operation of devices, including external communication. It is recommended to use galvanic separators.
- To protect signal and communication lines against external electromagnetic interferences, use properly grounded shielded cables and ferrite beads.
- Switching the digital output relays of large (exceeding specification) inductive loads can cause interference pulses to the electronics installed inside the product. Therefore, it is recommended to use external relays/contactors, etc. to switch such loads. The use of controllers with triac outputs also limits similar overvoltage phenomena.
- Many cases of disturbances and overvoltage in control systems are generated by switched, inductive loads supplied by alternating mains voltage (AC 120/230 V). If they do not have appropriate built-in noise reduction circuits, it is recommended to use external circuits such as snubbers, varistors, or protection diodes to limit these effects.

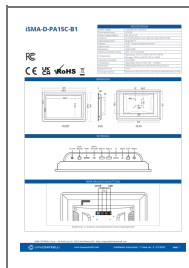
Electrical installation of this product must be done in accordance with national wiring codes and conform to local regulations.

iSMA CONTROLLI S.p.A. – Via Carlo Levi 52, 16010 Sant’Olcese (GE) – Italy | [support@ismacontrolli.com](mailto:support@ismacontrolli.com)

[www.ismacontrolli.com](http://www.ismacontrolli.com)

Installation Guideline| 1st Issue rev. 1 | 05/2022

## Documents / Resources



[iSMA CONTROLLI iSMA-D-PA15C-B1 HMI Panel](#) [pdf] Instruction Manual  
iSMA-D-PA15C-B1 HMI Panel, iSMA-D-PA15C-B1, HMI Panel, Panel

## References

- © [iSMA CONTROLLI S.p.A.](#)

