



# iSMA CONTROLLI iSMA-B-AAC20 Sedona Advanced Application Controller User Manual

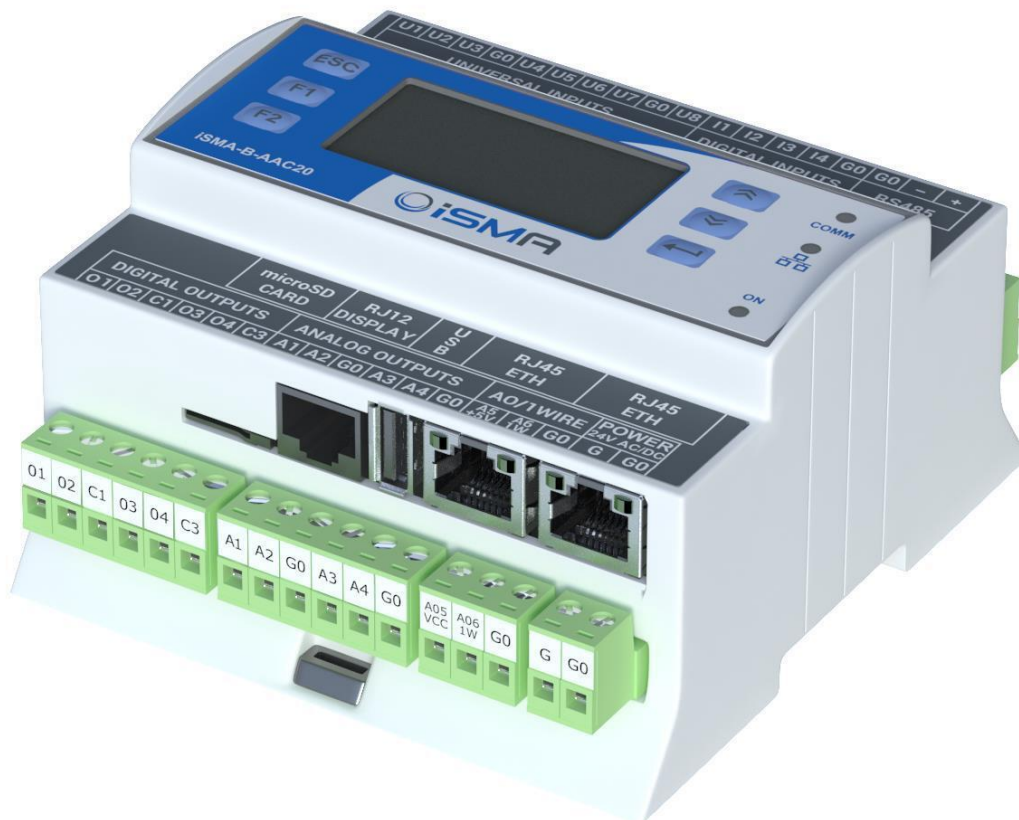
[Home](#) » [iSMA CONTROLLI](#) » iSMA CONTROLLI iSMA-B-AAC20 Sedona Advanced Application Controller User Manual 

## Contents

- [1 iSMA CONTROLLI iSMA-B-AAC20 Sedona Advanced Application Controller](#)
- [2 Introduction](#)
- [3 Installation of iSMA Mail Service Kit](#)
- [4 MailService Kit](#)
  - [4.1 OutAccount](#)
  - [4.2 EMail Alarm Recipient](#)
  - [4.3 The EMailAlarmRecipient component defines e-mail recipients.EMailAlarmRecipient](#)
- [5 Documents / Resources](#)
  - [5.1 References](#)
- [6 Related Posts](#)



**iSMA CONTROLLI iSMA-B-AAC20 Sedona Advanced Application Controller**



## Introduction

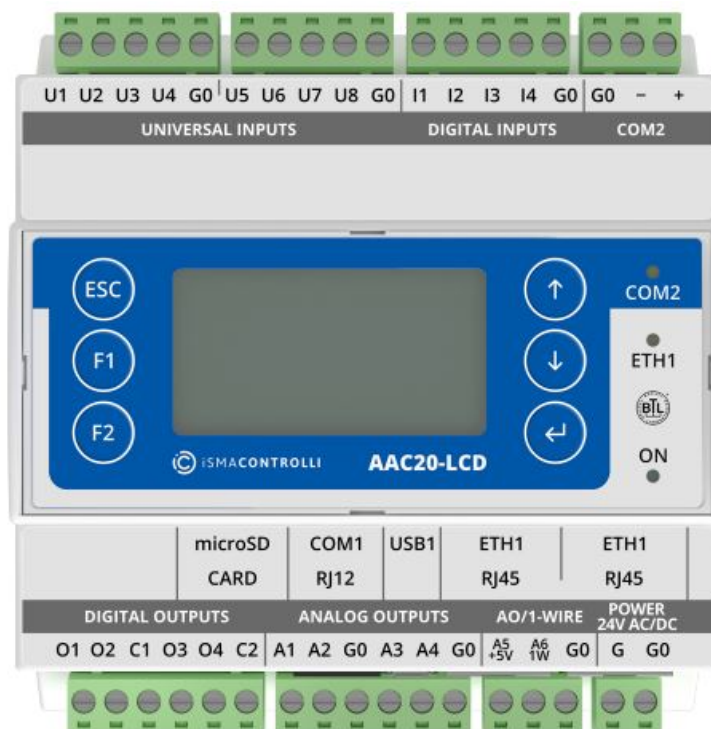


Figure 1. AAC20-LCD controller

This manual contains information about the iSMA MailService kit in the AAC20 controller. The iSMA MailService kit was developed in order to give the user a possibility to send alarm notifications via e-mail. The iSMA MailService kit can be used in all AAC20 hardware versions with all firmware versions.

## Revision History

Rev.	Date	Description
1.0	23 Feb 2018	First edition
1.1	22 Apr 2020	Company data update
1.2	28 Feb 2022	Rebranded Added information about available sockets

## Installation of iSMA Mail Service Kit

### Sockets Available in the iSMA-B-AAC20 Controller

The iSMA-B-AAC20 controller has 16 sockets for Modbus network. 3 out of 16 sockets are permanently occupied for:

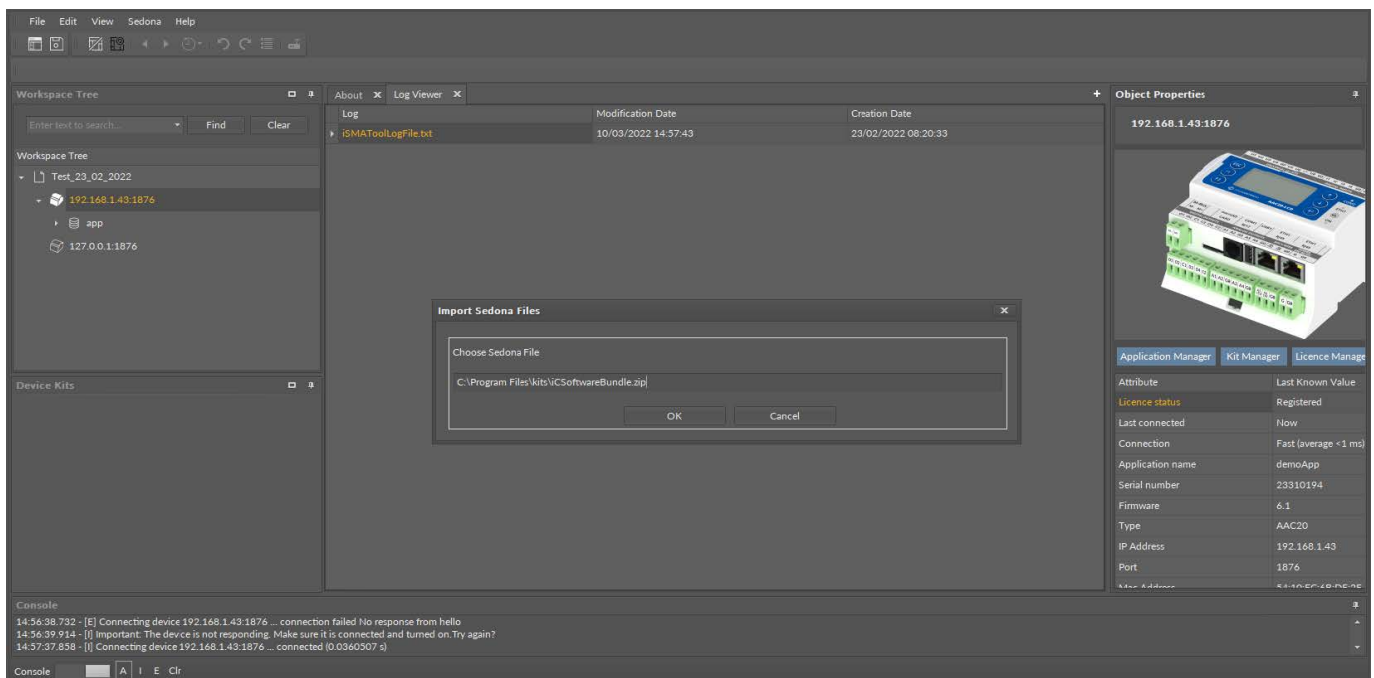
- Modbus Server
- SOX
- web server

Consequently, there are 13 sockets left to use in the device, for example, the Modbus TCP network can communicate with 13 devices with different IP addresses and connect them to application (adding more devices automatically forces them into the fault status). Also, adding any of the iSMA Weather or iSMA MailService kits occupies 1 socket per each kit (which becomes apparent after adding the kit and its components, saving the application, and rebooting the controller). The iSMA MailService kit can occupy more sockets if the mail service is configured for one account on one host—each next host occupies next sockets.

### Installing Kit

To install the iSMA MailService kit, import the kit to the iSMA Tool software (possibly as part of the package of various kits in a zip file). In order to do this, use an application from the Sedona -> Import Sedona Files. After a successful import of files, upload them to the device using the Kit Manager from the Sedona Tools package.

**WARNING!** Before programming the iSMA MailService, please check if the latest kit version is used. The latest kit is available at iSMA CONTROLLI support web site: [ismacontrolli.com](https://ismacontrolli.com).



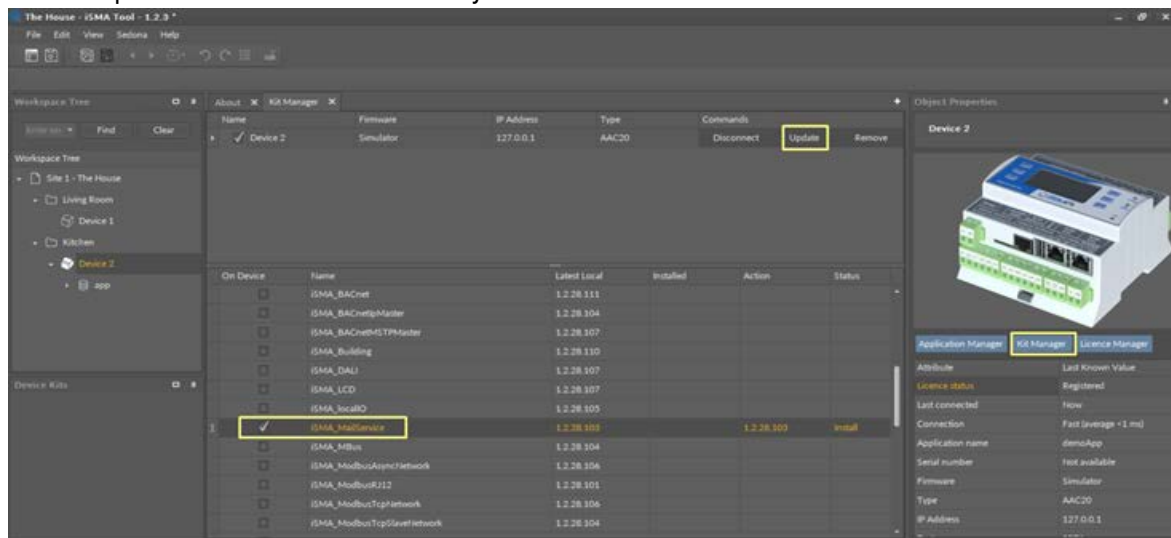
After a successful import of all packages, upload the files to your device using the Kit Manager tab, available from the Object Properties window or at the right-click on the device name in the iSMA Tool Tree window.

To install a selected kit:

**Step 1:** Open the iSMA Tool, connect to the device, and go to the Kit Manager tab, available from the Object Properties window or at the right-click on the device name in the Workspace Tree window;

**Step 2:** Select the iSMA MailService kit, then click the Update command as per the figure below;

**Step 3:** The component is installed successfully.



## Removing Kit

To remove the selected kit:

**Step 1:** Open the iSMA Tool, connect to the device, and remove all iSMA MailService kit's components from the application;

**Step 2:** Go to the Kit Manager tab, available from the Object Properties window or at right-click on the device name in the Workspace Tree window;

**Step 3:** Uncheck the iSMA MailService kit, then click the Update command;

**Step 4:** Components uninstallation was successful.

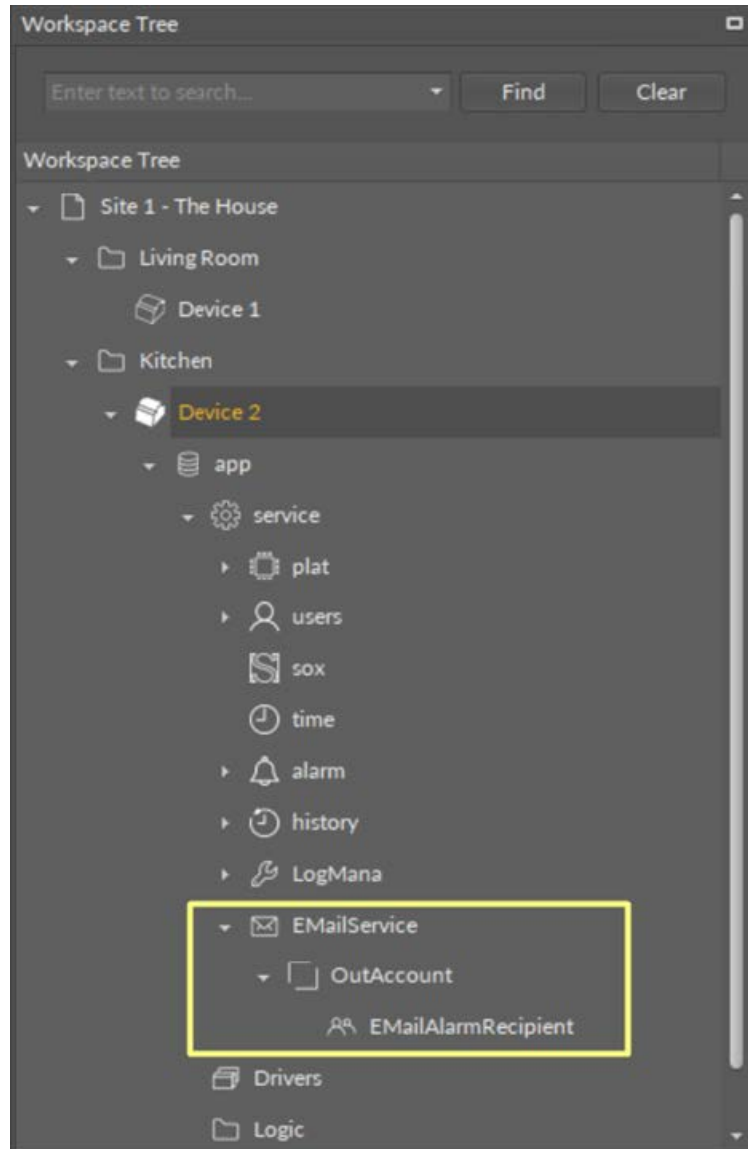
## MailService Kit

The iSMA MailService kit consists of three components:

- Email Service: main component
- Out Account: defines e-mail server account credentials
- Email Alarm Recipient: defines e-mail recipients.

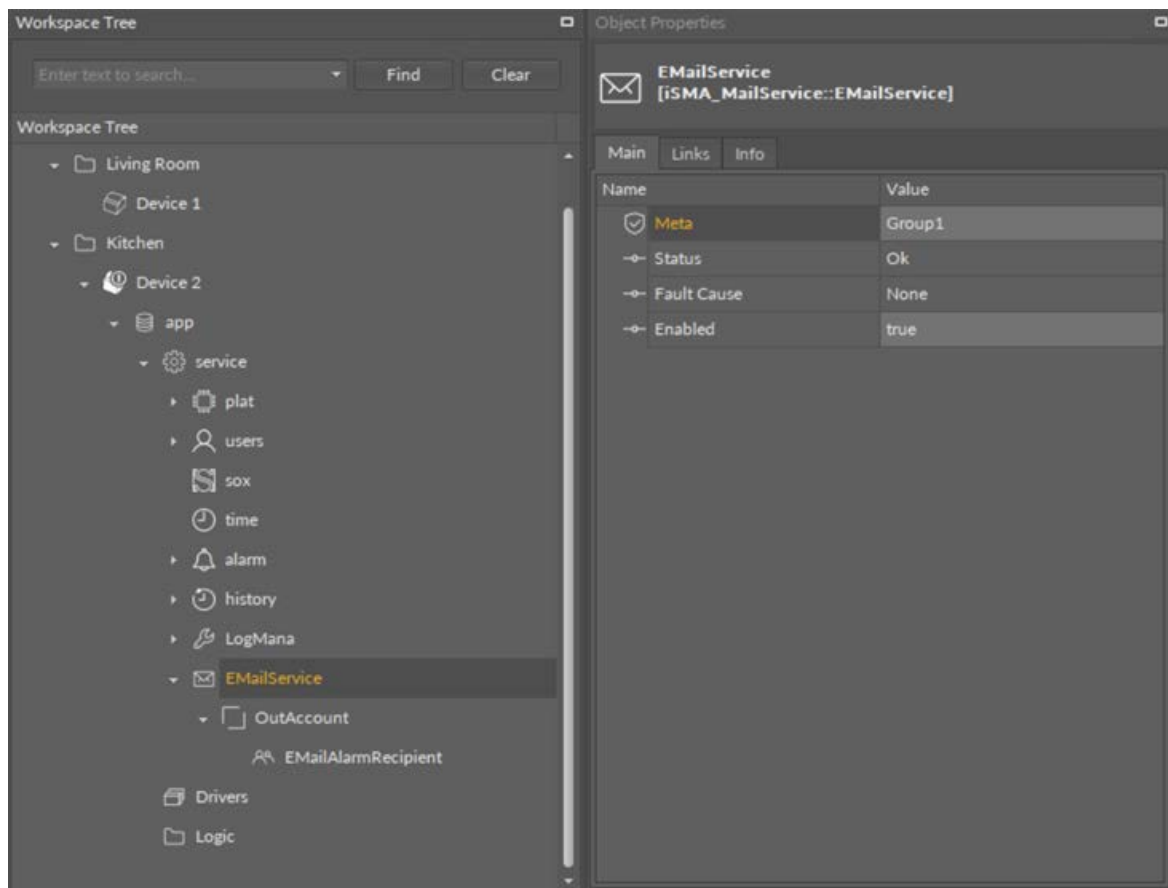
**WARNING!** Prior to starting the e-mail service on the ISMA-B-AAC20 controller, make sure that the controller's default gateway and DNS (if the Obtain DNS Server Address Automatically slot is set to false) are properly set in the plat service.

All three components should be located in a service branch one under another as per the figure below:



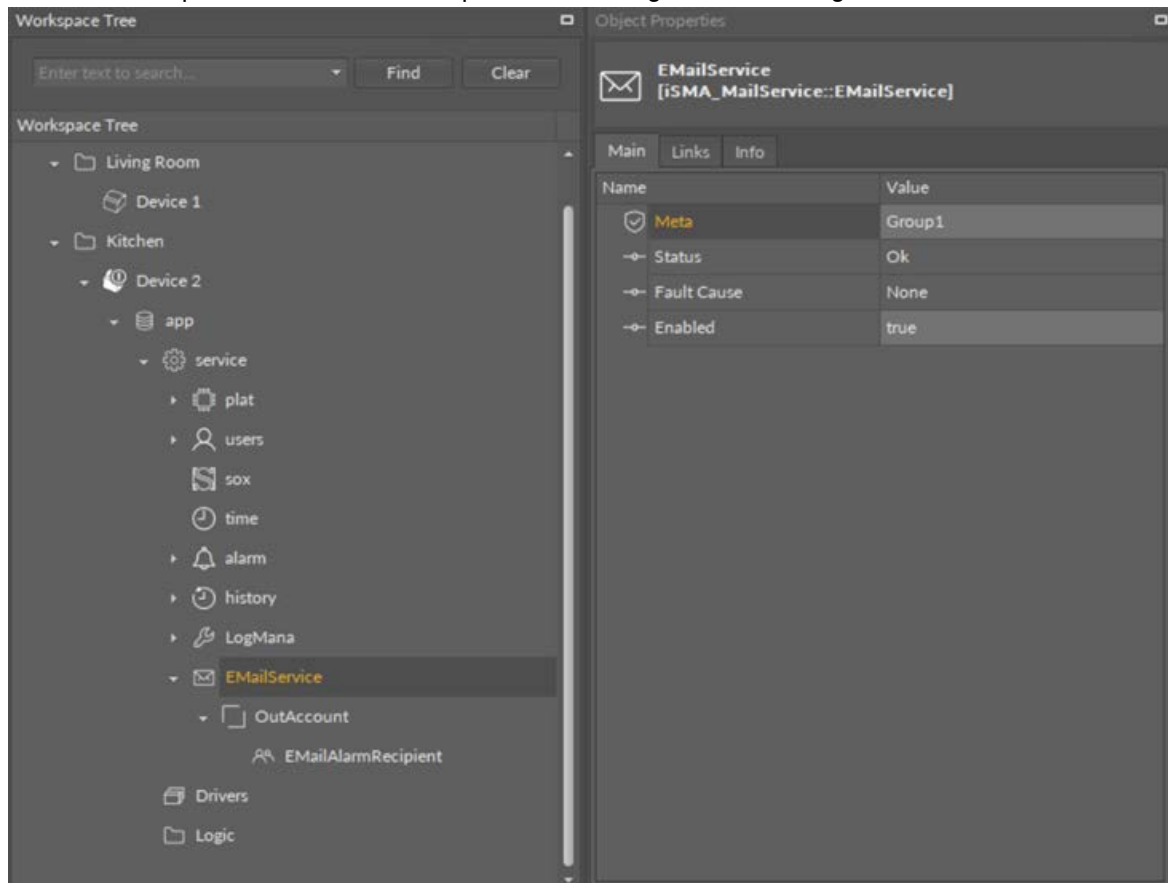
To create a new e-mail service, select the email service component from the Device Kits window, drag and drop it to the Workspace Tree, Device > app > service. In the Enabled slot choose true. To configure the parameters for a sending account, add an OutAccount component (by drag-and-drop from the Device Kits window) to the previously added EMailService component. To configure the recipient's account parameters, add the EMailAlarmRecipient component (by drag-and-drop from the Device Kits window) to the previously added OutAccount component. Fill in the To address slot with an e-mail address, which the messages will be sent to. Change the Enabled slot to true. To ensure proper working of the service, the controller must be connected to the internet.

**Note:** Only a non-encrypted e-mail server shall be used to send out alarm messages. Recommended servers are: <http://www.lycos.com> (64.98.36.139) or <http://mail.mosk.ru> (195.19.71.19). Fill in the account and password slots according to previously created credentials on the e-mail server.



## email service

The email service component is the main component, enabling the functioning of the e-mail service.

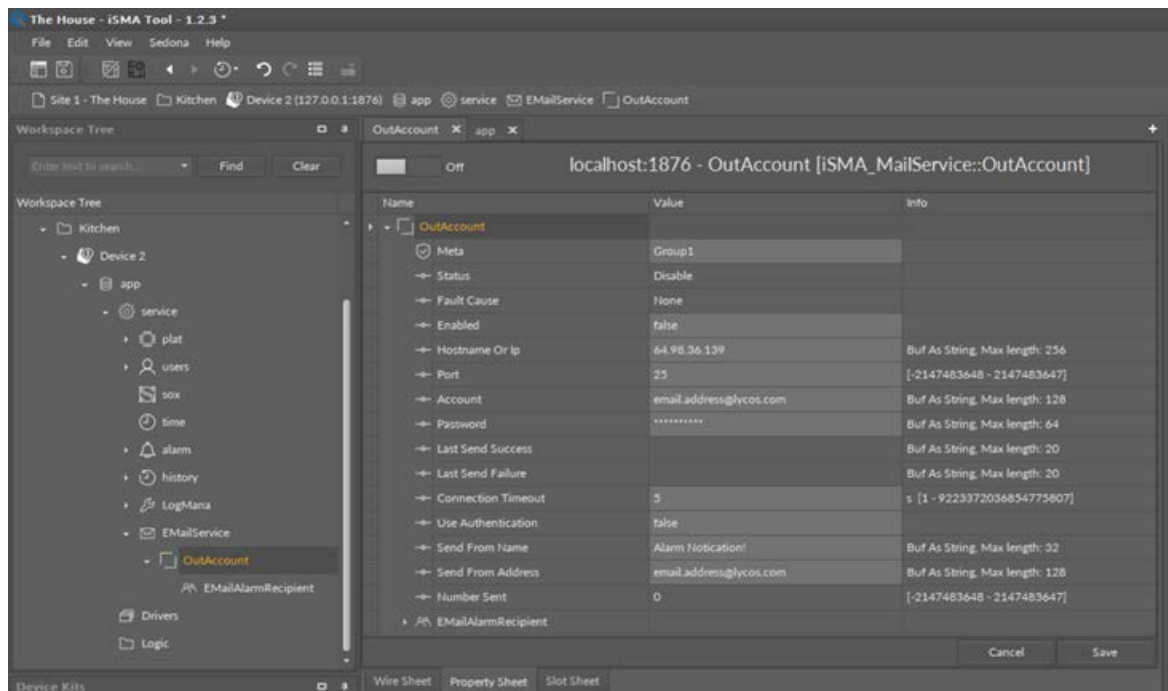


- The email service component has the following slots:
  - Status: component's status, available statuses:
    - OK: service is working properly,

- Disabled: service is disabled (the Enabled slot is in false)
- Fault
- Fault Cause: Fault cause description:
  - Note: service is working properly,
  - Duplicate network: more than one email service component is added to the controller;
- Enabled: switches the email service component on/off.

## OutAccount

The OutAccount component defines the e-mail server account credentials.  
iSMA-B-AAC20 MailService Kit User Manual



The OutAccount component has the following slots:

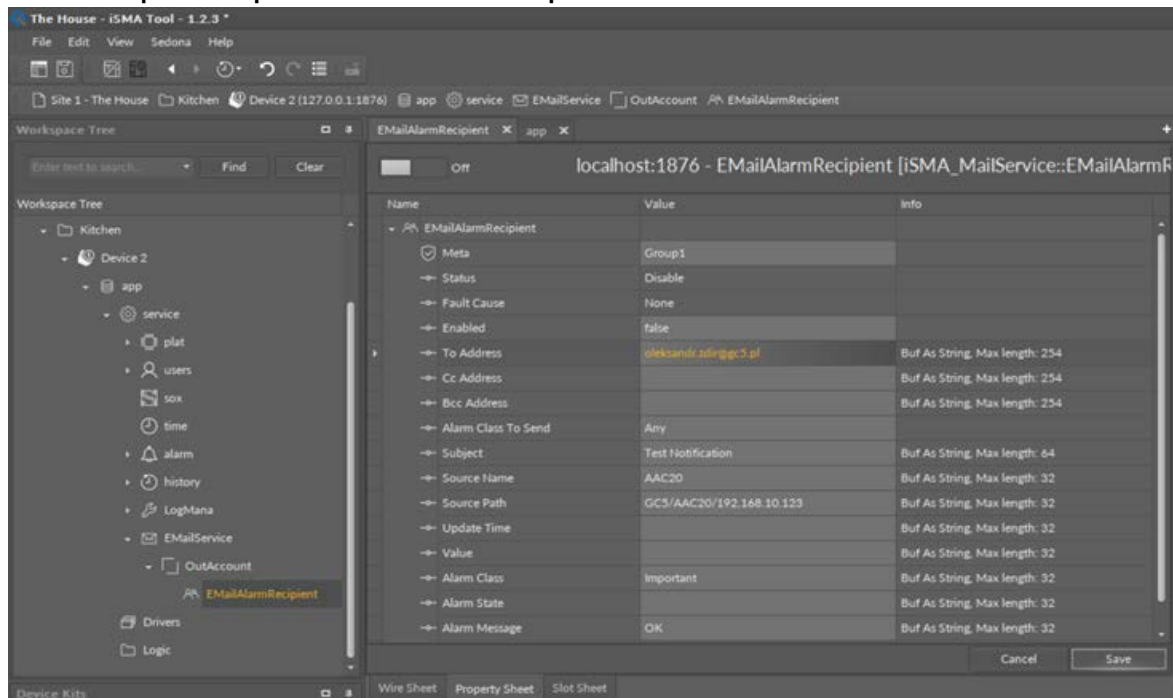
- Status: component's status, available statuses:
  - OK: component is working properly,
  - Disabled: component is disabled (the Enabled slot is in false); Fault;
- Fault Cause: Fault cause description:
- None: service is working properly,
- Not in network: the component is not placed under the EMailService component; Enabled: switches the component on/off;
- Hostname or IP: server IP address or hostname;
- Port: selection of the port;
- Account: account name on the e-mail server;
- Password: account password on the e-mail server;
- Last Send Success: date and time of a last successful notification action;
- Last Send Failure: date and time of a last unsuccessful notification action; Connection timeout: time value which restricts maximum connection time;
- Use Authentication: activation of the authentication:
  - True: active authentication process,
  - False: inactive authentication process;



- Send From Name: sender's name;
- Send From Address: sender's e-mail address; Number Sent: quantity of sent e-mail notifications.

## Email Alarm Recipient

The EMailAlarmRecipient component defines e-mail recipients.



## EmailAlarmRecipient

The EMailAlarmRecipient component defines e-mail recipients.


- Status: component's status, available statuses:
  - OK: component is working properly,
  - Disabled: component is disabled (the Enabled slot is in false); Fault;
- Fault Cause: fault cause description:
  - Could not connect: no connection could have been established;
  - Timeout: the maximum connection time has been exceeded;
  - Some Error with Alarm Database: the Alarm Db Status slot indicates database error;
  - None: service is working properly;
- Enabled: switches the component on/off;
- To Address: first recipient's e-mail address;
- Cc Address: carbon copy recipient's e-mail address;
- Bcc Address: blind carbon copy recipient's e-mail address; Alarm Class To Send: restriction by alarm class:
  - Any (default): all alarms will be sent regardless of their classes, Life Safety: only alarms with the Life Safety class will be sent, Critical: only alarms with the Critical class will be sent, Maintenance: only alarms with the Maintenance class will be sent;
- Subject: a subject for recipient's message;
- Source Name: source name information for the recipient's message; Source Path: source path information for the recipient's message; Update Time: date and time of the alarm event;
- Value: alarm value which caused the event;
- Alarm Class: alarm class information for the recipient's message; Alarm State: state of alarm value;



- Alarm Message: additional text information for the recipient's message; Alarm Db Status: alarm database status information.

**Note:** In order to send out alarm notifications, the ISMA-B-AAC20 controller needs to be equipped with a memory SD card.

## Documents / Resources

 <p>The image shows a white electronic device, the iSMA-B-AAC20 Sedona Advanced Application Controller, with a blue display screen and various ports. It is labeled 'iSMA-B-AAC20' and 'Sedona Advanced Application Controller'.</p>	<p><a href="#">iSMA CONTROLLI iSMA-B-AAC20 Sedona Advanced Application Controller</a> [pdf] User Manual</p> <p>iSMA-B-AAC20, Sedona Advanced Application Controller, iSMA-B-AAC20 Sedona Advanced Application Controller</p>
---	--

## References

- [© iSMA CONTROLLI S.p.A.](#)
- [© iSMA CONTROLLI S.p.A.](#)
- [Lycos.com](#)
- [User Manual](#)

[Manuals+](#), [Privacy Policy](#)

This website is an independent publication and is neither affiliated with nor endorsed by any of the trademark owners. The "Bluetooth®" word mark and logos are registered trademarks owned by Bluetooth SIG, Inc. The "Wi-Fi®" word mark and logos are registered trademarks owned by the Wi-Fi Alliance. Any use of these marks on this website does not imply any affiliation with or endorsement.