



# iskydance R2 WZS 10-Key CCT Zigbee 3.0 Remote Controller Instruction Manual

[Home](#) » [iskydance](#) » iskydance R2 WZS 10-Key CCT Zigbee 3.0 Remote Controller Instruction Manual 

## Contents

- [1 iskydance R2 WZS 10-Key CCT Zigbee 3.0 Remote Controller](#)
- [2 Technical Parameters](#)
- [3 Key function](#)
- [4 App Operating Instructions](#)
- [5 Remote association and scene settings](#)
- [6 Safety information](#)
- [7 Documents / Resources](#)
- [8 Related Posts](#)

# iskydance

iskydance R2 WZS 10-Key CCT Zigbee 3.0 Remote Controller



## Product Information

- Product Name: 10-Key CCT Zigbee 3.0 Remote Controller
- Model No.: R2(WZS)
- Supported Technology: Zigbee 3.0
- Wireless Range: Up to 30 meters
- Battery Type: CR2032
- Available Colors: White and black

## Features

- Designed for use with Zigbee 3.0 dual-color LED controllers or drivers.
- Built-in Tuya Zigbee 3.0 remote module enables scenario linkage and one-click execution.
- Each remote can be paired with one or more receivers.
- Powered by a CR2032 battery.
- Operates with an LED indicator light.

## Technical Parameters

- Input and Output: Zigbee 3.0
- Working Voltage: 3VDC (CR2032 battery)
- Working Current: (Not specified in the provided text)
- Standby Current: (Not specified in the provided text)
- Standby Time: (Not specified in the provided text)
- Remote Distance: (Not specified in the provided text)

## Product Usage Instructions

1. Ensure that the remote controller is within the wireless range of the LED controller or driver (up to 30 meters).
2. Open the battery compartment on the remote controller and insert a CR2032 battery.
3. Observe the LED indicator light on the remote controller to ensure it is functioning properly.

4. To pair the remote controller with a receiver, follow the pairing instructions provided by the receiver's manufacturer.
5. Once successfully paired, use the 10-key layout on the remote controller to control various functions of the connected LED controller or driver.
6. Refer to the LED controller or driver's user manual for specific instructions on utilizing the scenario linkage and one-click execution features.
7. If the battery power is low, replace the CR2032 battery with a new one.

#### **10-key/Zigbee 3.0/Wireless remote 30m distance/CR2032 battery**

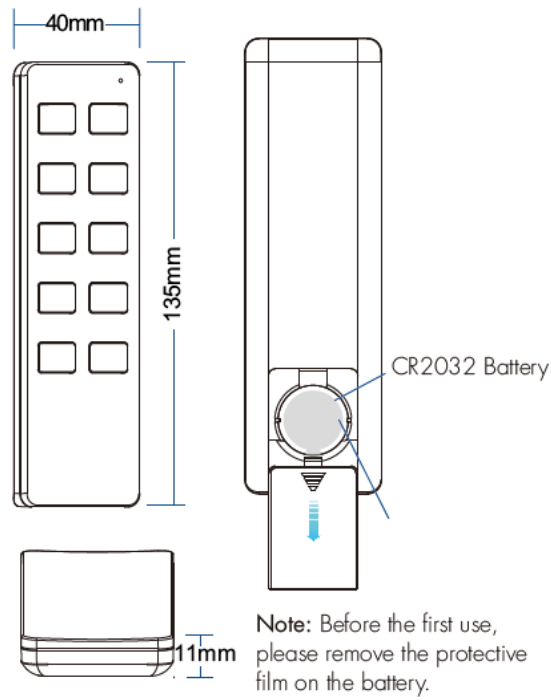
### **Technical Parameters**

Input and Output	
Output signal	Zigbee 3.0
Working voltage	3VDC(CR2032)
Working current	<15mA
Standby current	<16μA
Standby time	1 year
Remote distance	30m(Barrier-free space)

EMC standard (EMC)	ETSI EN 301 489-1 V2.2.3
	ETSI EN 301 489-17 V3.2.4
Safety standard(LVD)	EN 62368-1:2020+A11:2020
Radio Equipment(RED)	ETSI EN 300 328 V2.2.2
Certi cation	CE,EMC,LVD,RED

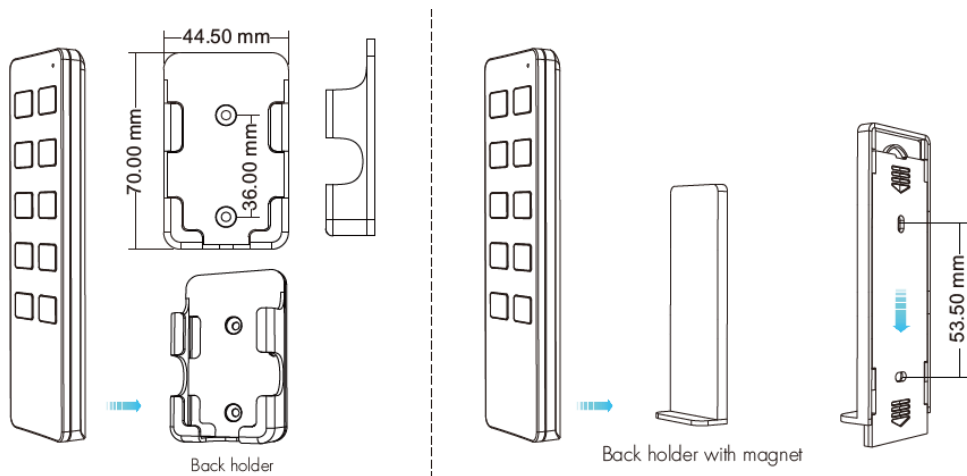
Environment	
Operation temperature	Ta: -30 OC ~ +55 OC
Package	
Size	L138x W50 x H22mm
Gross weight	0.064kg
Warranty	
Warranty	5 years

### **Mechanical Structures and Installations**



### Back holder

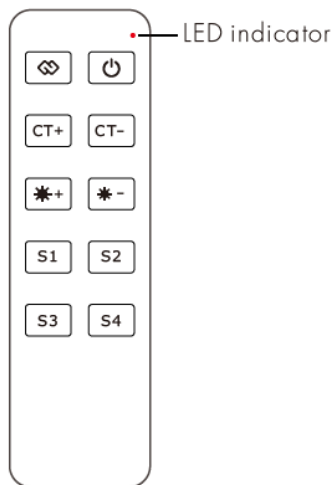
Two options are offered for selection, please fix the remote' back holder on the wall with two screws, or adhere the remote' back holder to the wall with a paster.



1. Back holder without magnet
2. Back holder with a magnet (The remote needs to be customized with built-in magnets)

### Key function

Before using the remote, please edit the scene setting through the Tuya APP first.



- : Turn on/off light.
- : Network pairing
- : Adjust color temperature, short press 11 levels, 10% step.
- : Adjust brightness, short press 11 levels, 10% step.
- : Short press to recall the scene 1-4.

Before use the remote, please edit the scene setting through Tuya APP firstly.

## App Operating Instructions

### Network pairing

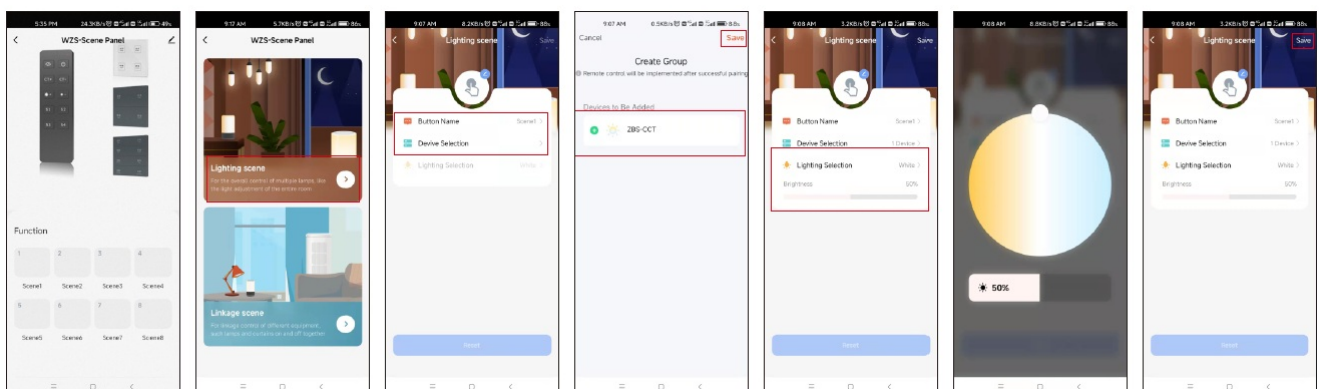
- Download the Tuya APP register an account, search, and add the Tuya Zigbee gateway device.
- Press and hold the “Network pairing” button until the LED indicator light flashes.
- Under the gateway, you can find the WZS-Scene Panel device in the Tuya APP.
- After successful network pairing, the indicator light will be on for 2 seconds and then off.
- Under the gateway, search and add one or more ZBS-CCT light devices.
- Remote unpairing: Delete the WZS-Scene Panel device from the Tuya APP.

### Remote association and scene settings

There are 8 scenes in the Tuya APP, which can be set to lighting scenes or linkage scenes. The lighting scene is used for the overall control of multiple lamps, like the light adjustment of the entire room. Linkage scene is used for linkage control of different equipment, such as lamps and curtains on and off together.

Example 1, set scene 1 for synchronous light control of the whole room:

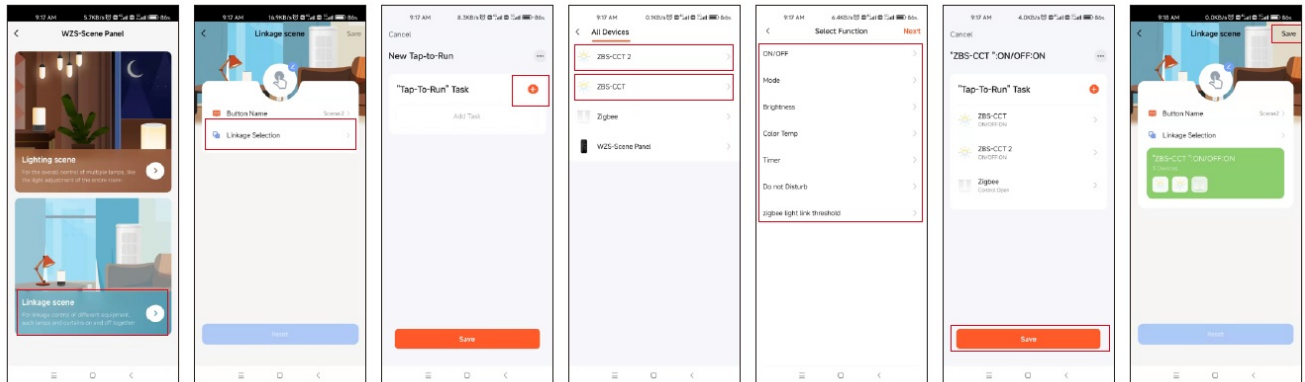
- Select Scene 1 and open the lighting scene settings.
- You can change the scene name, add one or more devices, adjust brightness and color temperature, and then save it.
- After successful setting, you can use the remote to control these lamps directly.



Example 2, Set scene 2 to set up a scenario where different lamps or curtains are controlled together with

different colors or on/off state.

1. Select Scene 2 and open the linkage scene settings.
2. You can change the scene name, add “one-click execution” tasks, select the devices that need to be linked, and save the required functions, such as ON/OFF, mode, brightness, and color temperature.
3. After successful setup, you can use the remote to directly control all linked devices to the desired scene.



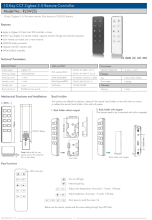
#### Note:

- The scene1-4 in Tuya APP corresponds to the scene 1-4 key on the remote.
- To delete the scene function, you can select “Reset” in the scene settings.

### Safety information

1. Read all instructions carefully before you begin this installation.
2. When installing a battery, pay attention to the battery’s positive and negative polarity.
3. After a long time without the remote control, remove the battery.
4. When remote distance becomes smaller and insensitive, replace the battery.
5. Gently handle the remote, beware of falling.
6. For indoor and dry location use only.

### Documents / Resources

	<a href="#">iskydance R2 WZS 10-Key CCT Zigbee 3.0 Remote Controller</a> [pdf] Instruction Manual R2 WZS, 10-Key CCT Zigbee 3.0 Remote Controller, R2 WZS, 10-Key CCT Zigbee 3.0 Remote Controller, 3.0 Remote Controller, Remote Controller
---	---