



iSimple BTHFS380 BLUETOOTH CASSETTE ADAPTER WITH HANDSFREE User Manual

[Home](#) » [iSimple](#) » iSimple BTHFS380 BLUETOOTH CASSETTE ADAPTER WITH HANDSFREE User Manual 

Contents

- [1 iSimple BTHFS380 BLUETOOTH CASSETTE ADAPTER WITH HANDSFREE](#)
- [2 Features](#)
- [3 INSTALLATION SETUP](#)
- [4 INSTALLATION INSTRUCTIONS](#)
- [5 CONTROL BUTTON FUNCTIONS](#)
- [6 FCC WARNING](#)
- [7 Documents / Resources](#)
- [8 Related Posts](#)



iSimple BTHFS380 BLUETOOTH CASSETTE ADAPTER WITH HANDSFREE



ABOUT THIS PRODUCT

Hands-free calling and music streaming through your car radio's cassette player! Spotify, Pandora, Google Play, YouTube Red, iTunes, or whatever else you're using.

Features

- Compatible with any car's cassette player. That's right- it's not useless after all!
- Dash-mounted push-button capability. Answer a call, pause your music, skip a track, or enable voice recognition – without taking your eyes off the road.
- Bluetooth equipped. No headphone jack? No problem! Our new CallCassette version is Bluetooth enabled.
- Flat cable design. Say goodbye to hopelessly tangled cables! Our innovative flat cable design doesn't tie itself in knots.

BOX CONTENTS



Be careful when removing all items from the packaging tray. Take care not to tug or pull on cables.

1. Bluetooth Cassette (A)
Inserts into your car radio's cassette player
2. Control Button with Mic (B)
Used to control your audio and calls
3. Button Dash-Mount (C)
Adheres to your dash. Holds control button

INSTALLATION SETUP

iSimple knows that your car might look different than featured here. Placement of product will vary per year /make/model of your vehicle and smart phone.

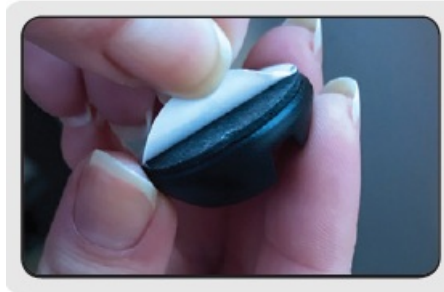
How to Charge BTHFS380

Plug the micro-USB end of the enclosed charging cable into the CallCassette (A). Plug the USB end of the BTHFS380 charging cable into a USB power source. When connected to a power source, the LED light will glow red while charging. When charging is complete, the red LED light will turn off. You're now ready to pair.



INSTALLATION INSTRUCTIONS

1. Insert CallCassette (A) into your car radio, noting "THIS SIDE UP".
Tip! If the cassette adapter cannot be loaded in "This Side Up", you can insert the cassette adapter upside down, just make sure you press the A/B button on your car radio.
2. Determine an easily accessible location for the Control Button (B). Remove the adhesive backing from the button (C) mount and attach to a clean, flat surface with the cable notch facing in the proper direction for the cable.
3. Insert the Control Button (B) into the button mount.

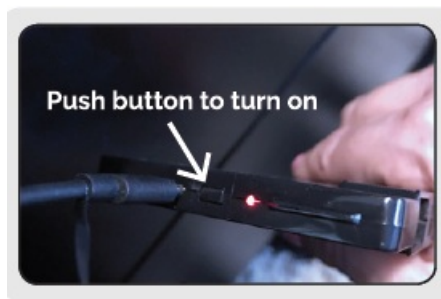


PAIRING GUIDE

Make sure that Bluetooth on your device is turned on.

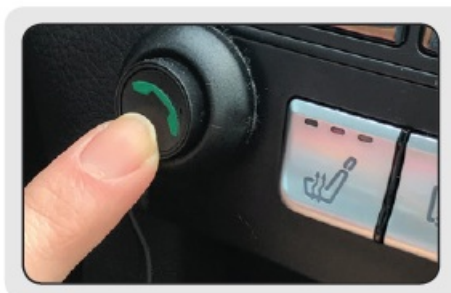
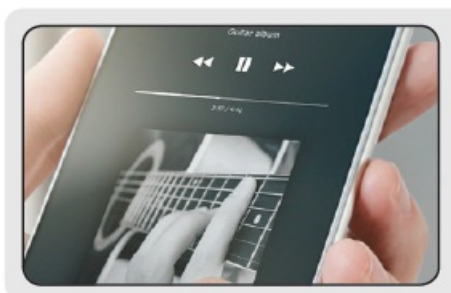
1. Turn on BTHFS380 by pressing the Power Button on the CallCassette (A). The LED light will begin flashing red/blue to indicate power is on and is ready for pairing.
2. Open the Bluetooth menu on your smartphone, and scan for available Bluetooth devices. Find "CallCassette" from the list, and select "Connect".

When a successful connection has been established, the LED light will confirm with a steady red light and then the light will turn off.



HOW TO PLAY YOUR PHONE'S AUDIO

1. Select the "TAPE" sOurce on your radio to hear music and phone calls from your phone
2. On your device, access your music/media player of choice.
3. Use the Control Button (B) for functions such as play, pause and track forward
(Performance and functions may vary depending on the device and app used.)



HOW TO PLAY YOUR PHONE'S AUDIO

CONTROL BUTTON FUNCTIONS

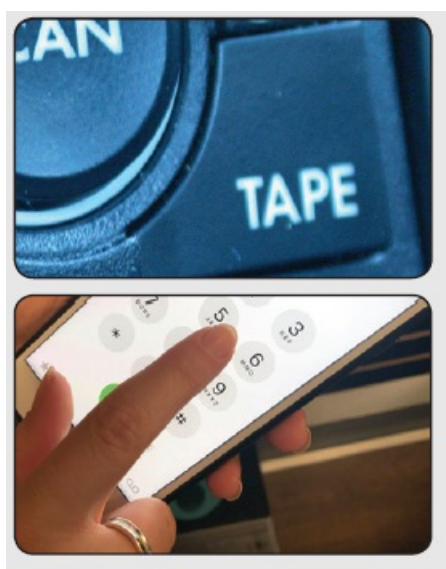
Action	Description
PLAY	Press button once
FORWARD TRACK	Press button twice
REVERSE	Press button three times
ENABLE VOICE RECOGNITION	Press button and hold

Adjust the volume using your device and radio volume.

CALLING INSTRUCTIONS

How to Make Calls Using Your BTHFS380

- Make sure your phone is paired and select the “TAPE” source on your radio to hear music and phone calls from your phone.
- To dial a phone number use your phone’s keypad or simply activate Voice Recognition by pressing and holding Control Button (B.)
- See below chart for how to accept/answer and end calls



How to Power Off BTHFS380

To power off. press the power button on CallCassette (A) for 5 seconds. The LED light will flash red and then turn off.



ABOUT AUTO-CONNECT

When powered on, CallCassette will Auto-Connect to the last device paired if the device is available

ABOUT POWER SAVE MODE

If you forget to turn it off, don't panic, CallCassette will automatically shut down after 3 minutes when Out of range of your smartphone. Your CallCassette battery life is approximately 5 hours. To preserve it, you should power off when not in use.

ABOUT LOW BATTERY WARNING

You can expect about 5 hours of playback from your CallCassette on a single charge. NOTE: When the built-in battery is low, CallCassette LED light will start flashing red about every 8 seconds

FCC WARNING

This device complies with part 15 of the FCC Rules. Operation is subject to the following two conditions: (1) this device may not cause harmful interference, and (2) this device must accept any interference received, including interference that may cause undesired operation. Any changes or modifications not expressly approved by the party responsible for compliance could void the user's authority to operate the equipment.

NOTE: This equipment has been tested and found to comply with the limits for a Class B digital device, pursuant to Part 15 of the FCC Rules. These limits are designed to provide reasonable protection against harmful interference in a residential installation. This equipment generates, uses and can radiate radio frequency energy and, if not installed and used in accordance with the instructions, may cause harmful interference to radio communications. However, there is no guarantee that interference will not occur in a particular installation. If this equipment does cause harmful interference to radio or television reception, which can be determined by turning the equipment off and on, the user is encouraged to try to correct the interference by one or more of the following measures:


- Reorient or relocate the receiving antenna.
- Increase the separation between the equipment and receiver.
- Connect the equipment into an outlet on a circuit different from that to which the receiver is connected
- Consult the dealer or an experienced radio/TV technician for help.

FCC RF exposure statement:

The device has been evaluated to meet general RF exposure requirements in portable use exposure condition without restriction.

This equipment may be reset by unintentional electrostatic discharge during operation, Exposure to direct sunlight or extreme heat may cause damage or malfunction.

Documents / Resources

 The image shows the product packaging for the iSimple BTHFS380 Bluetooth Cassette Adapter. The box is white with a red border and features the iSimple logo at the top left. Below the logo, the text 'BLUETOOTH CASSETTE ADAPTER WITH HANDSFREE' is visible. The main image on the box shows the black adapter device with a red button and a small display. Below the box, there is a small red card with the text 'BTHFS380' on it.	<p>iSimple BTHFS380 BLUETOOTH CASSETTE ADAPTER WITH HANDSFREE [pdf] User Manual</p> <p>BTHFS380, 2ATYS-BTHFS380, BLUETOOTH CASSETTE ADAPTER, CASSETTE ADAPTER WITH HANDSFREE</p>
---	--