



# ISENPENK SP-5267 Bluetooth Pro Controller for N-SW User Manual

[Home](#) » [ISENPENK](#) » ISENPENK SP-5267 Bluetooth Pro Controller for N-SW User Manual 

## ISENPENK SP-5267 Bluetooth Pro Controller for N-SW User Manual



### Contents

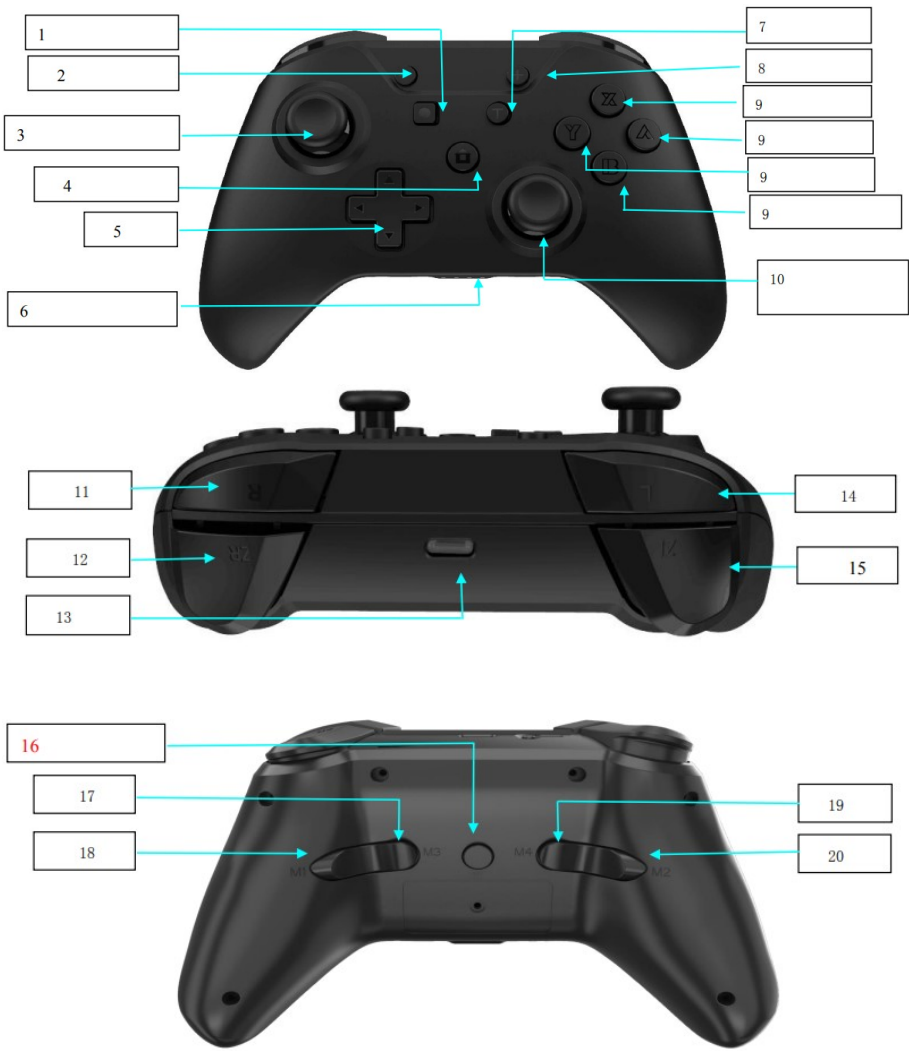
- [1 Product Description](#)
- [2 Product Index](#)
- [3 Function Description](#)
- [4 Documents / Resources](#)
- [5 Related Posts](#)

## Product Description

Our wireless controller is compatible with Switch/Switch lite/PC. This switch controller with functions of wake-up, macro programmable button, 3D sensitivity joysticks, adjustable turbo and double shock provide you with a

smoother and more realistic gaming experience.

Product Index



1. Capture button	2. Menu button
3. Left 3D Joystick/L3	4. HOME button
5. D-pad	6. LED indicators
7. TURBO button	8. Menu button +
9. Action button A/B/X/Y	10. Right 3D Joystick/R3
11. R	12. ZR
13. Type-C	14. L
15. ZL	16. SYNC button
17. M3	18. M1
19. M4	20. M2

Function Description

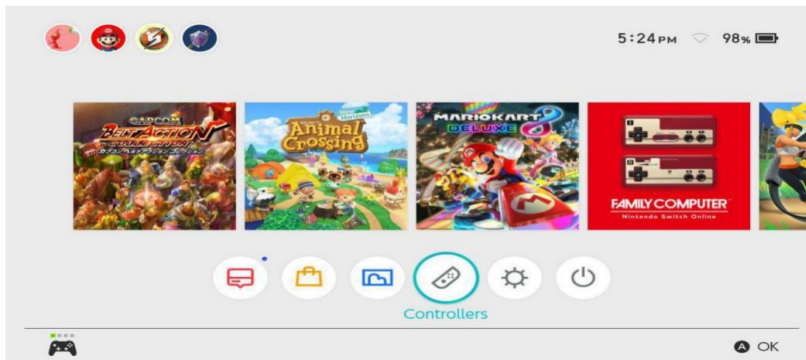
## 1. Exiting LOCK MODE

For the first use, please charge the controller with a USB-C cable before exiting the “lock mode” and the controller can work normally. (In order to avoid power consumption, the factory defaults to “lock mode” )

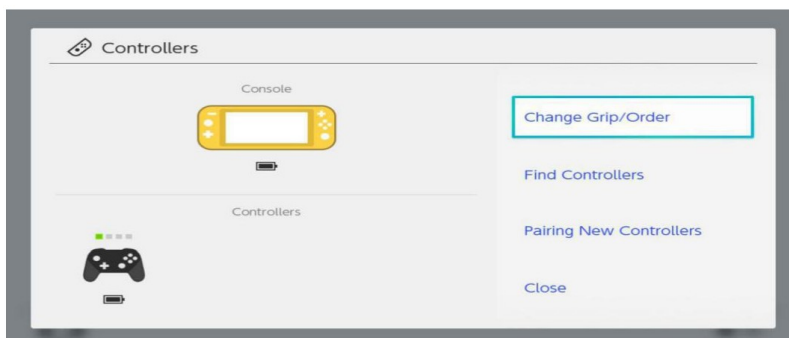
## 2. Connection way to the SW-Console:

1. **Wired connection:** By USB-C cable. Cable Connection: Just connect the controller to the console by USB-C cable directly.
2. **Wireless connection:** By Bluetooth. Bluetooth Connection: Long press the “SYNC” button on the back of the controller for 3 seconds until the LED 1-4 flashes, open the Switch console to the paired interface, the controller works after pairing succeeds and the corresponding LED keeps on; If pairing fails, the controller will automatically enter sleep mode after 60 seconds.

a) Enter the controller settings page, Select “Controllers” as below picture:



b) Select “change grip/order”, as below picture:



c) Press the “SYNC” button on the back of the controller for 3s then successful connection, as below picture:



## 3. Connection way to PC:

Connect the controller to the PC by USB-C cable, the display name of the device is Xbox 360Controller (The PC needs to be installed the Xbox 360 driver), achieve Xbox 360 functions.

## 4. Wake-Up and Reconnect:

### 1. Wake-Up:

When the console goes to a dormant state and the controller is connected with the console, press

the "HOME" button to wake up the game console.

## 2. **Reconnect:**

Press any button (except L3/R3/TURBO/M1/M2/M3/M4) to wake up the game controller, it enters reconnect state, LED 1-4 flash. If the previous pairing is not clear away, it will automatically reconnect to the console

## 5. **"SYNC" Button Operation:**

1. **Pairing State:** Press and hold the "SYNC" button on the back of the controller for 3 seconds, the LED1-4 flash to enter into pairing state.
2. **Dormant State:** In the power-on state, press once the "SYNC" button and the controller will enter into the dormant state.

## 6. **Turbo Function:**

The controller supports turbo function and turbo speed adjustment.

**a)** Turbo function: Press and hold the "**TURBO**" button and any function buttons to complete the TURBO setting.

**b)** Auto Turbo function: After the first setup is successful, please hold down the "**TURBO**" button for the second time and press any function buttons once to complete the auto TURBO setting (except for the arrow buttons).

**c)** Cancel Turbo function: Press and hold the "**TURBO**" button for 3 seconds to clear all the button burst functions.

Turbo speed adjustment: Press and hold the "TURBO" button and 3D right joystick on the controller upward and downward operations at the same time to adjust the Turbo speed. (Three gears: fast, medium and slow, and the default is slow)

## 7. **Motors Vibration Function**

You can manually turn on or off the motor vibration function in the "Setting" option on the console.

Motor Vibration adjustment: Press and hold the "TURBO" button and 3D left joystick on the controller upward and downward operations at the same time to adjust the motor vibration strength. (Four gears: 100% -70% -30% -0%, and the default is 70%)

## 8. **Macro Programmable Button: M1/M2/M3/M4**

**It can be programmed ↑/↓/←/→/A/B/X/Y/Z/R/ZL/ZR/L3/R3. The operating steps are as below:**

1. Connection to the SW console, press "TURBO" and M1(2/3/4) buttons, release and enter the M1(2/3/4) customize state.
2. Enter the M1(2/3/4) customizable state after pressing the "A" button(refer), "A" button has been customized to M1, then the A=M1 button. Follow the above steps to set the M2, M3, and M4 buttons. Clear customizable function: connection to the console, press "Y" and "B" buttons, then press "HOME" button to clear the M1(2/3/4) button customizable function.

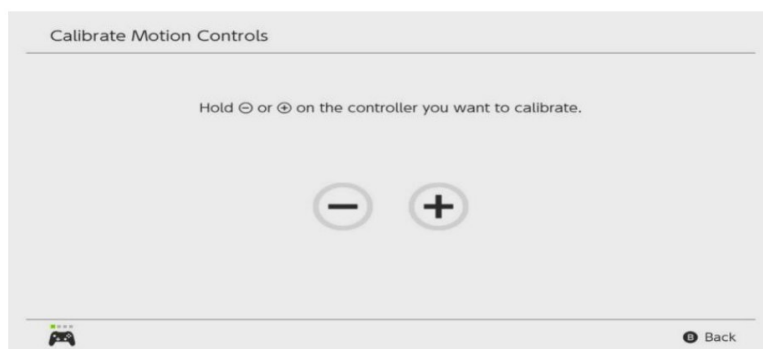
## 9. **3D Sensitivity Adjustment Function:**

Left 3D sensitivity adjustment: After connecting succeed with the console, every time when you press TURBO+L3, the Left 3D sensitivity will be changed, Low-> Middle->High->lowcircle; Right 3D sensitivity adjustment: After connecting succeed with the console, every time when you press TURBO+R3, the Right 3D sensitivity will be changed, Low-> Middle->High->lowcircle.

## 10. **Gyroscope Sensor Calibration:**

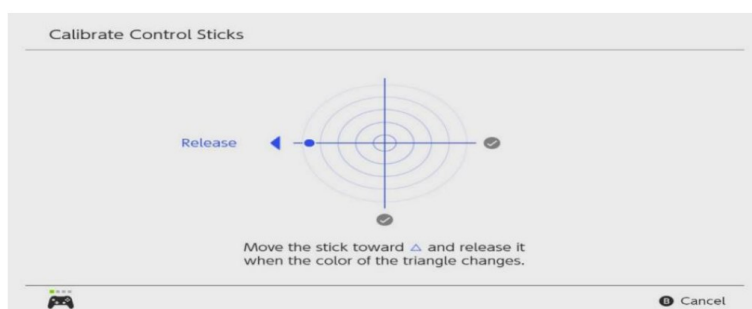
1. In the dormant state, press "B", "-" and "HOME" buttons at the same time, LED indicators to flash from left to right in the cycle, the controller enters into gyroscope sensor, then press "+" button and

then release. After 1 one second, the flash of the channel light will return to the flashingwater light, and the calibration of the gyroscope sensor is completed. Calibration screen as below picture:



## 2. 3D Joystick Calibration of SW Console

After the controller successfully connects with the console, return to the main menu, click System “Settings” to enter the Setting menu. Scroll down the Settings menu, select “Controllers and Sensors” option, scroll up the menu list and click “Calibrate joystick”, press down the stick that you want to calibrate, enter the “calibration screen”, press button “X” on the controller, the prompt menu appears, press button “A” on the controller to confirm calibration, enter the “Sticks calibration” screen, please follow the screen instructions to operate the stick UP, DOWN, LEFT, RIGHT, CIRCLE in turn. As below picture:



## 11. Battery and Indicator:

**a) Charging State:** The adapter is inserted and the channel light blinks. When fully charged, the channel light goes off. When the handle is charging in an online state, the corresponding channel light flashes slowly and lights long after it is full.

**b) Low voltage alarm:** When the battery voltage of the controller is lower than 3.3V, the corresponding channel LED indicator flashes to indicate low energy and the controller needs to be charged.

### c) Standby State:

1. When the controller is power-on, short press the “**SYNC**” button to stand by.
2. When the controller is in a pairing state, it automatically stands by if pairing fails after 60 seconds.
3. When the controller is connected to the console, it will automatically stand by if without any action for 5 minutes.

## 12. Reset Function

When the controller is abnormal, it can be reset by pressing and holding the “HOME” button for 10 seconds.

## 13. Product Parameters:

**Power supply:** Polymeric Li-ion battery

**Battery capacity** 500mAh

**Charging voltage** DC5V

**Sleep current** ≤15uA

**Working current (without vibration)  $\leq 20\text{mA}$**

**Bluetooth transmission distance :  $\leq 10\text{m}$**

**Working time: 8-10hours**

**Charging time: 2.5 hours**


**Charging current: 200MA**

**Pairing current:  $\leq 20\text{mA}$**

**Working current (with vibration):  $\leq 100\text{mA}$**



## Documents / Resources

	<p><b><a href="#">ISENPENK SP-5267 Bluetooth Pro Controller for N-SW [pdf]</a></b> User Manual SP-5267 Bluetooth Pro Controller for N-SW, SP-5267, Bluetooth Pro Controller for N-SW, Bluetooth Pro Controller, Controller</p>
---	--

Manuals+.