



iSearching iTAG Tracker User Manual

[Home](#) » [iSearching](#) » iSearching iTAG Tracker User Manual 

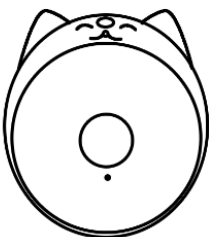
iSearching iTAG Tracker User Manual

USER MANUAL

English



iSearching



<http://www.qrtransfer.com/iSearching.html>



<https://play.google.com/store/apps/details?id=com.lenzetech.isearchingtwo>



<https://itunes.apple.com/cn/app/isearching/id>

Apple, APP Store, iPhone, iPad and iPod touch are trademarks of Apple Inc.

Google play is a trademark of Google Inc. All other trademarks used herein are the property of their respective owners.

This manual is designed to help you fully understand how to use the product for your benefit.

Contents

1 GETTING STARTED

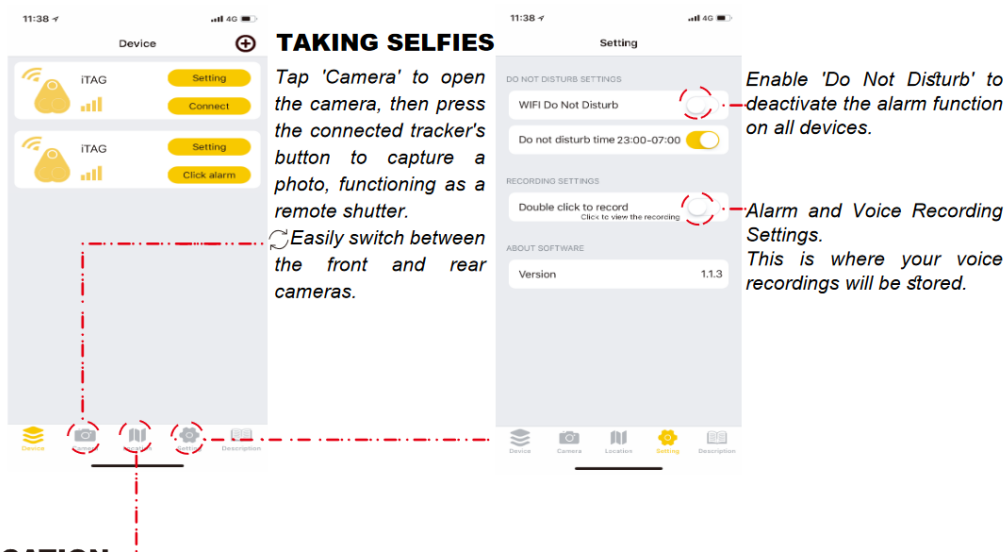
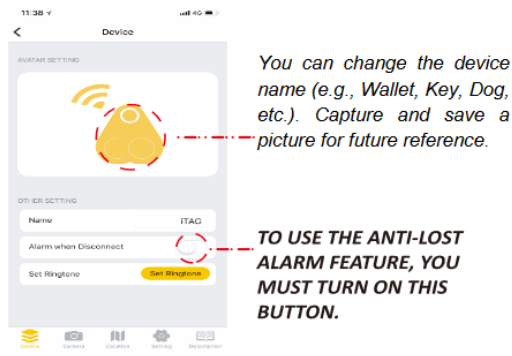
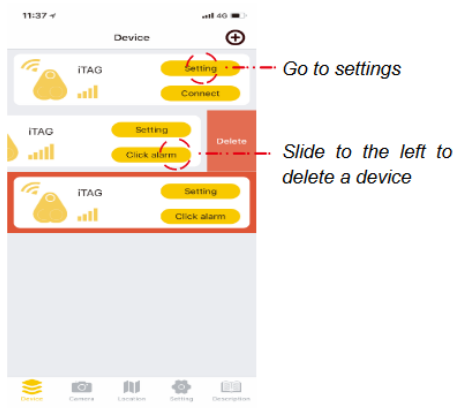
2 BATTERY REPLACEMENT

3 Documents / Resources

3.1 References

GETTING STARTED

Launch the app on your smartphone. Take a moment to check the tutorial page, and don't forget to tap 'Allow' to turn app's notifications on.



LOCATION

Location History: When you park your car, simply press the tracker's button to mark your current location on the map. To locate your vehicle, just tap 'Location History'.

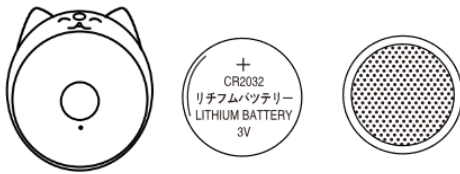
Lost History: In case you misplace your tracker, find it effortlessly in the 'Lost History.' A pin will be dropped automatically on the map, providing you with the tracker's location. Just tap 'Lost History' to access the record.

BATTERY REPLACEMENT

Battery type: CR2032

The CR2032 is a common type of standard size battery, making it easier to purchase and replace.

To replace the battery, simply open the tracker's button serving as the battery cover



FCC Warning Statement: Changes or modifications to this unit not expressly approved by the party responsible for compliance could void the user's authority to operate the equipment. This equipment has been tested and found to comply with the limits for a Class B digital device, pursuant to Part 15 of the FCC Rules. These limits are designed to provide reasonable protection against harmful interference in a residential installation. This equipment generates, uses and can radiate radio frequency energy and, if not installed and used in accordance with the instructions, may cause harmful interference to radio communications.

However, there is no guarantee that interference will not occur in a particular installation. If this equipment does cause harmful interference to radio or television reception, which can be determined by turning the equipment off and on, the user is encouraged to try to correct the interference by one or more of the following measures:

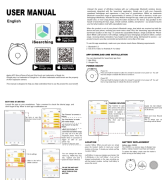
- Reorient or relocate the receiving antenna.
- Increase the separation between the equipment and receiver.
- Connect the equipment into an outlet on a circuit different from that to which the receiver is connected.
- Consult the dealer or an experienced radio/TV technician for help.

This device complies with Part 15 of the FCC Rules. Operation is subject to the following two conditions: (1) this device may not cause harmful interference, and (2) this device must accept any interference received, including interference that may cause undesired operation.

FCC Radiation Exposure Statement

The device has been evaluated to meet general RF exposure requirement. The device can be used in portable exposure condition without restriction.

Documents / Resources

	iSearching iTAG Tracker [pdf] User Manual iTAG Tracker, Tracker
---	--

References

- [User Manual](#)

[Manuals+](#). [Privacy Policy](#)

This website is an independent publication and is neither affiliated with nor endorsed by any of the trademark owners. The "Bluetooth®" word mark and logos are registered trademarks owned by Bluetooth SIG, Inc. The "Wi-Fi®" word mark and logos are registered trademarks owned by the Wi-Fi Alliance. Any use of these marks on this website does not imply any affiliation with or endorsement.