



IRONRIDGE A2 Racking Accelerated Flush Mount Instruction Manual

[Home](#) » [IRONRIDGE](#) » IRONRIDGE A2 Racking Accelerated Flush Mount Instruction Manual 

Contents

- [1 IRONRIDGE A2 Racking Accelerated Flush Mount](#)
- [2 Product Usage Instructions](#)
- [3 Racking Accelerated™](#)
- [4 Rail Selection](#)
- [5 Documents / Resources](#)
 - [5.1 References](#)
- [6 Related Posts](#)



IRONRIDGE A2 Racking Accelerated Flush Mount



Specifications

- Rail Sizes: A1 Rail, A2 Rail
- Finishes: Black-anodized, Mill
- Certifications: Listed to UL 2703
- Warranty: 25-year warranty
- External Load: A1 – 150 PSF, A2 – 180 PSF
- Rail Span Between Attachments: A1 – 4' to 8', A2 – 10' 4"
- Snow Load: A1 – 20 PSF, A2 – 30 PSF
- Wind Load: A1 – 150 MPH, A2 – 180 MPH

Product Usage Instructions

Glove-Friendly Components

Our product is designed with components that are glove-friendly for easy handling and installation.

One-Tool 1/2 System

The one-tool 1/2 system simplifies the installation process by allowing you to use a single tool for most tasks.

Fully-Certified Cable Tray

Ensure that the cable tray is fully certified before installation to maintain the system's integrity and safety.

Hassle-Free Rail Alignment

Our rail system is designed for hassle-free alignment, making the installation process smoother and more efficient.

Rail Selection

Choose between the A1 Rail and A2 Rail based on your specific load conditions. A1 Rail is suitable for most conditions, while A2 Rail is recommended for heavy-snow and high-wind regions.

Easy Hardware & Wire Placement

The design of our product allows for easy placement of hardware and wires, ensuring a tidy and secure installation.

Mobile Resources

For more detailed information and certification letters, please visit [IronRidge.com](https://www.ironridge.com).

FAQ

- **Q: What is the warranty period for the product?**

A: The product is backed by a 25-year warranty.

- **Q: How do I choose between the A1 Rail and A2 Rail?**

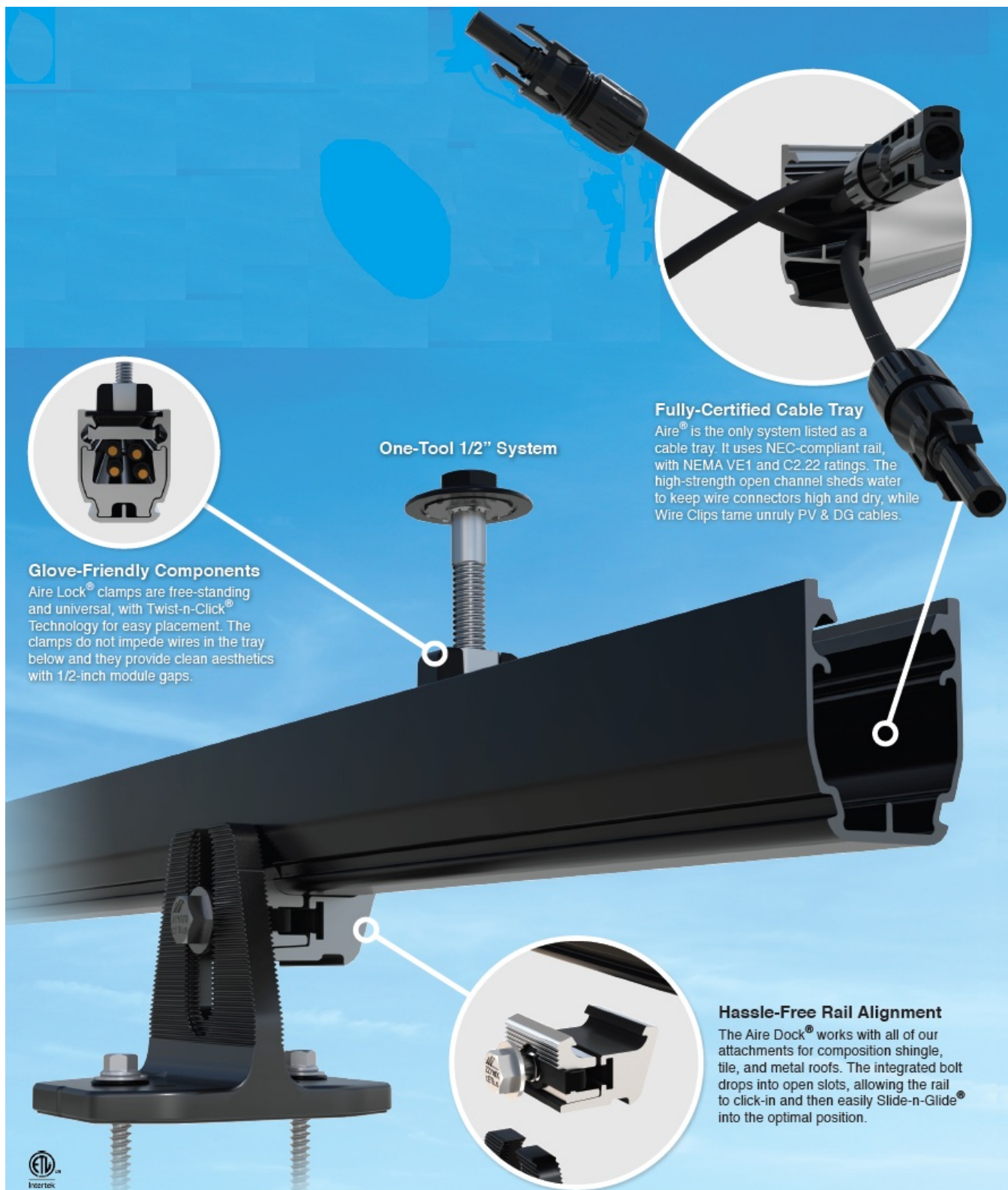
A: The A1 Rail is suitable for most load conditions, while the A2 Rail is recommended for heavy-snow and high-wind regions.

- **Q: Is the rail system listed to any certifications?**

A: Yes, the rail system is listed to UL 2703 certification.

Racking Accelerated™

Aire® is a carefully-engineered, ergonomic racking system for pitched roofs—honoring both speed and precision. Each component has been designed to enforce a quality installation that can withstand the elements. We've worked hand-in-glove with installers to provide the strongest, feature-rich, open-channel rail on the market. Two rail sizes come in black-anodized and mill finishes. Listed to UL 2703 and backed by a 25-year warranty.



Glove-Friendly Components

Aire Lock® clamps are free-standing and universal, with Twist-n-Click® Technology for easy placement. The clamps do not impede wires in the tray below and they provide clean aesthetics with 1/2-inch module gaps.

One-Tool 1/2" System

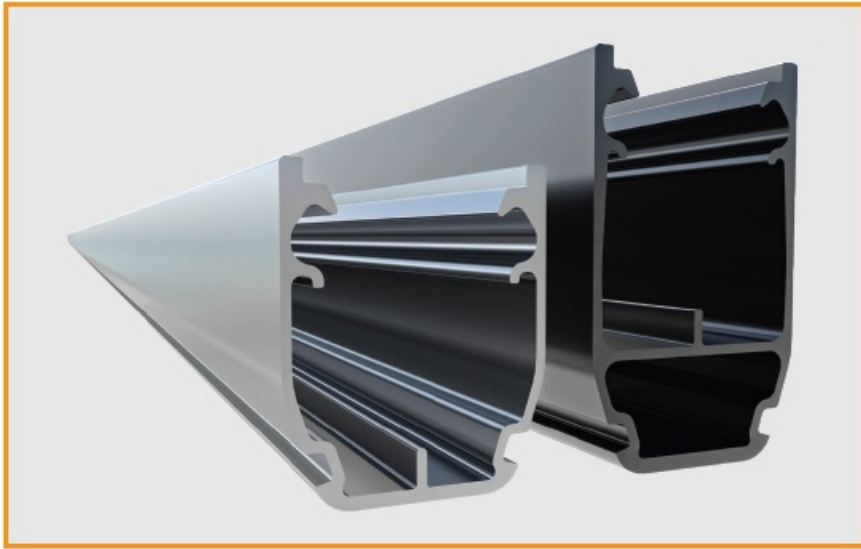
Fully-Certified Cable Tray

Aire® is the only system listed as a cable tray. It uses NEC-compliant rail, with NEMA VE1 and C2.22 ratings. The high-strength open channel sheds water to keep wire connectors high and dry, while Wire Clips tame unruly PV & DG cables.

Hassle-Free Rail Alignment

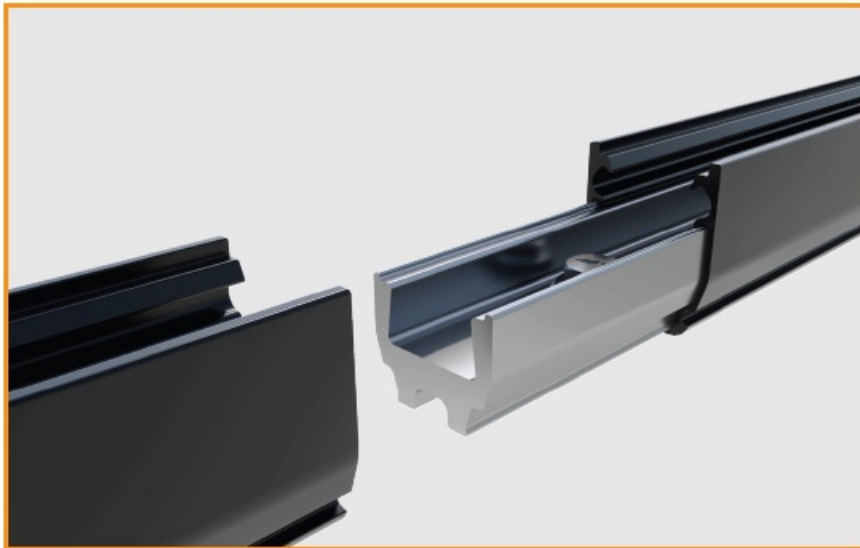
The Aire Dock® works with all of our attachments for composition shingle, tile, and metal roofs. The integrated bolt drops into open slots, allowing the rail to click-in and then easily Slide-n-Glide® into the optimal position.

Aire® Flush Mount System



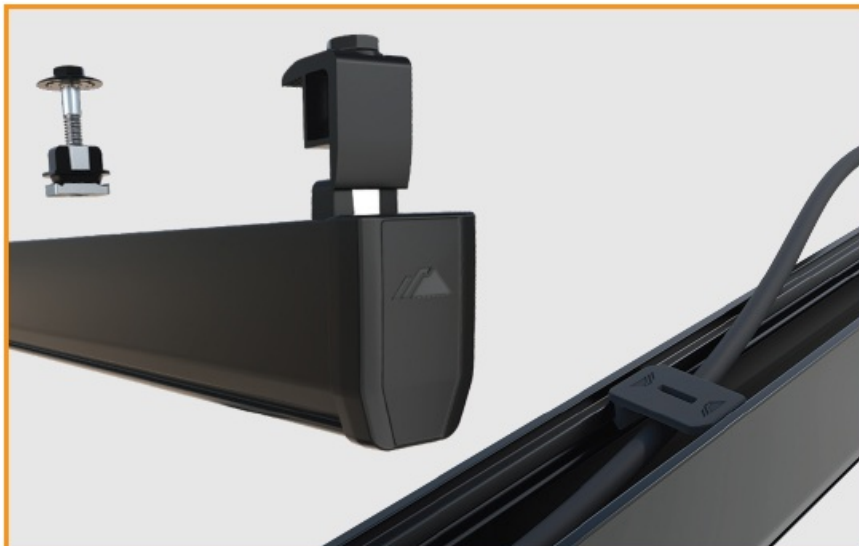
Two Optimized Aire® Rail Sizes

A1 Rail meets most load conditions, while the heftier A2 Rail is best in heavy-snow and high-wind regions.



Internal Bonded Structural Splices

Aire® Ties connect two pieces of rail together without penetrations. Its water-relief “bridge” allows drainage.



Easy Hardware & Wire Placement

Quarter turn and Aire Lock® clamps stand freely. Wire Clips press in, with a flat-head slot for quick removal.



Aesthetically-Pleasing Hidden Ends

Aire Lock® Stealth clamps module row ends. With a 15° angled bolt, rail cuts are not needed for access.

Rail Selection

The provided table* illustrates span differences for Aire® A1 and A2 Rails. It was prepared in compliance with applicable codes and standards. Values based on the following criteria: ASCE 7-16, Gable Roof Flush Mount, Roof Zones 1 & 2e, Exposure B, Roof Slope of 8° to 20° and Mean Building Height of 30 ft. Visit [IronRidge.com](https://www.ironridge.com) for detailed certification letters.

External Load		Rail Span Between Attachments				
Snow (PSF)	Wind (MPH)	4'	5' 4"	6'	8'	10' 4"
None	120					
	150					
	180	A1	A2			
20	150					
	180					
30	150					
	180					
40	180					
80	180					
120	180					

Mobile Resources



*Table is for illustration purposes only. Use approved certification letters for actual design guidance.
© 2024 IronRidge, Inc. All rights reserved. Visit www.ironridge.com or call 1-800-227-9523 for more information.
Version 1.01



[IRONRIDGE A2 Racking Accelerated Flush Mount](#) [pdf] Instruction Manual

A2 IronRidge Flush Mount, A2, IronRidge Flush Mount, Flush Mount

References

- [User Manual](#)

[Manuals+](#), [Privacy Policy](#)

This website is an independent publication and is neither affiliated with nor endorsed by any of the trademark owners. The "Bluetooth®" word mark and logos are registered trademarks owned by Bluetooth SIG, Inc. The "Wi-Fi®" word mark and logos are registered trademarks owned by the Wi-Fi Alliance. Any use of these marks on this website does not imply any affiliation with or endorsement.