



## IRONBISON IB-TRS-032 Rocker Step Running Boards Installation Guide

[Home](#) » [IRONBISON](#) » IRONBISON IB-TRS-032 Rocker Step Running Boards Installation Guide 

IRONBISON IB-TRS-032 Rocker Step Running Boards



## Contents

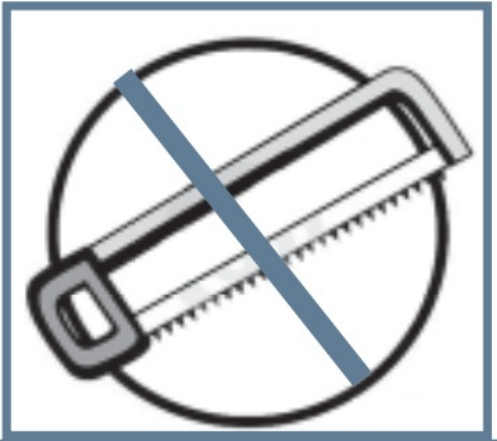
- [1 Features](#)
- [2 Torque & Tools](#)
- [3 BEFORE INSTALLATION](#)
- [4 Part List](#)
- [5 Installation Step](#)
- [6 Documents / Resources](#)
  - [6.1 References](#)
- [7 Related Posts](#)

## Features

- 60-120 min





- Cutting Not Required



- Drilling Not Required



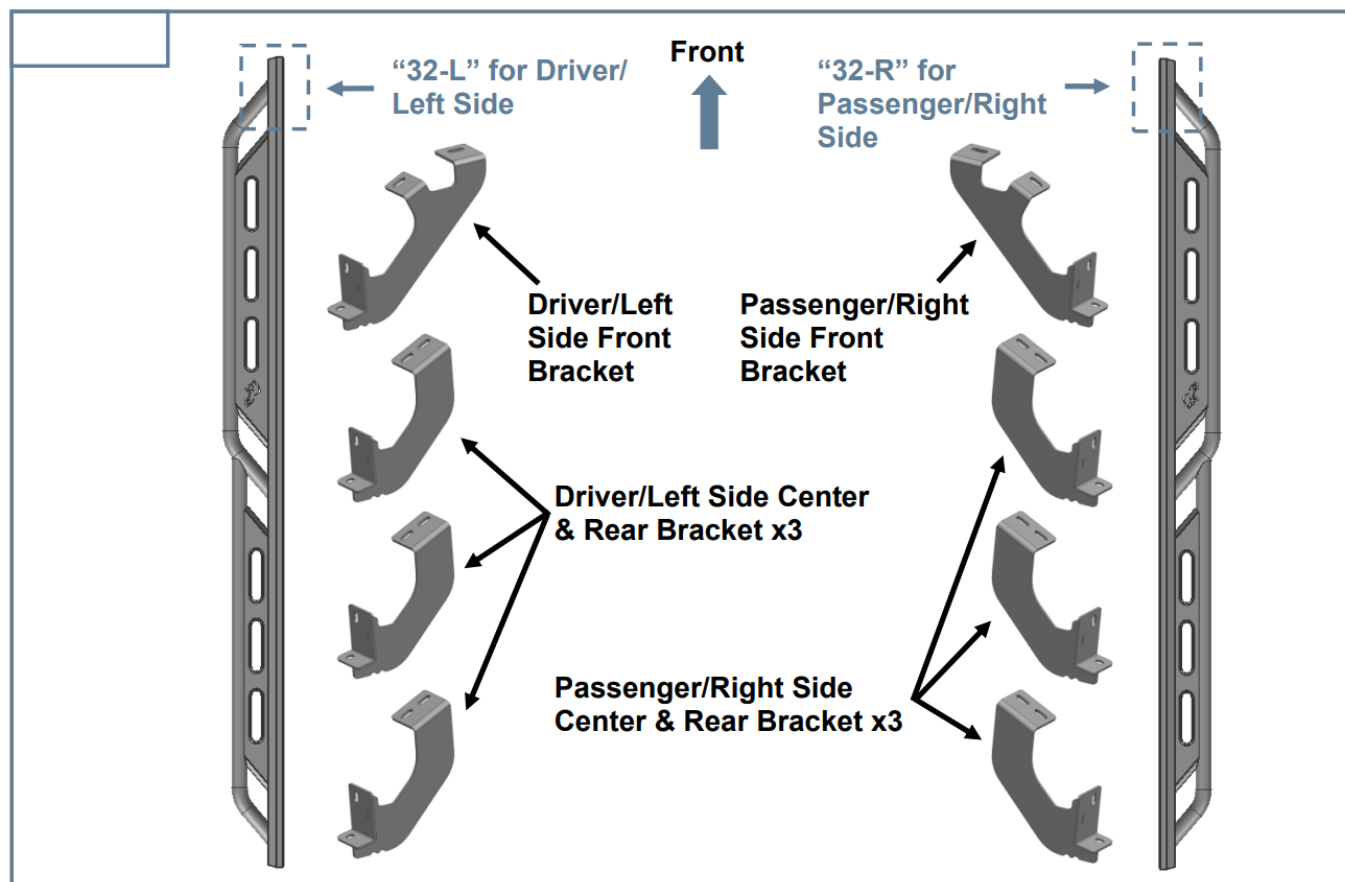
## Torque & Tools

Fastener Size	Tightening Torque (ft-lbs )	Wrench Required		Allen Wrench Required	
6mm	7-8.5		10mm		4mm
8mm	18-20		13mm		5mm
10mm	35-40		16mm		6mm
12mm	60-70		18mm		8mm

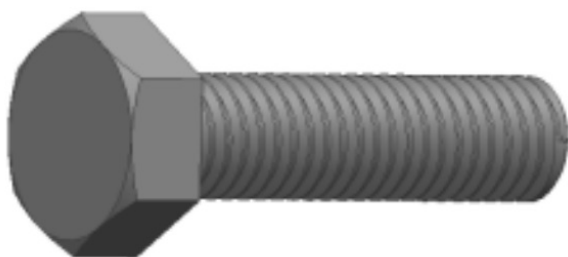
## BEFORE INSTALLATION

REMOVE CONTENTS FROM BOX. VERIFY ALL PARTS ARE PRESENT DEPEND ON THE PARTS LIST. READ INSTRUCTIONS CAREFULLY. BUMPER IS HEAVY, ASSISTANCE IS HIGHLY RECOMMENDED TO AVOID POSSIBLE INJURY OR DAMAGE TO THE VEHICLE.

## Part List



- 8mm x 30mm Hex Bolt x16



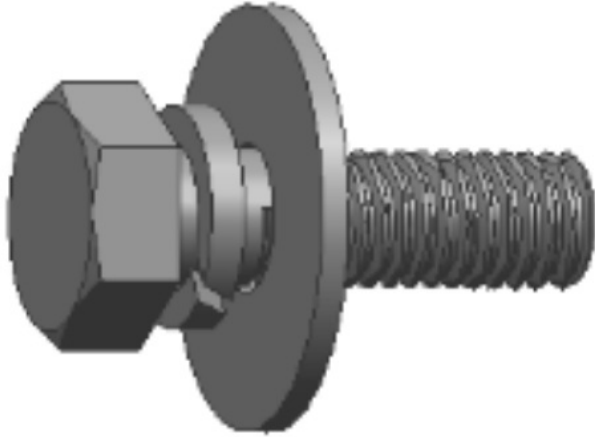
- 8mm Flat Washer x16



- 8mm Lock Washer x16



- 8mm x 25mm Combo Bolt x16



PLEASE NOTE THAT THE FOLLOWING PICTURES ARE BASED ON THE PASSENGER SIDE INSTALLATION.

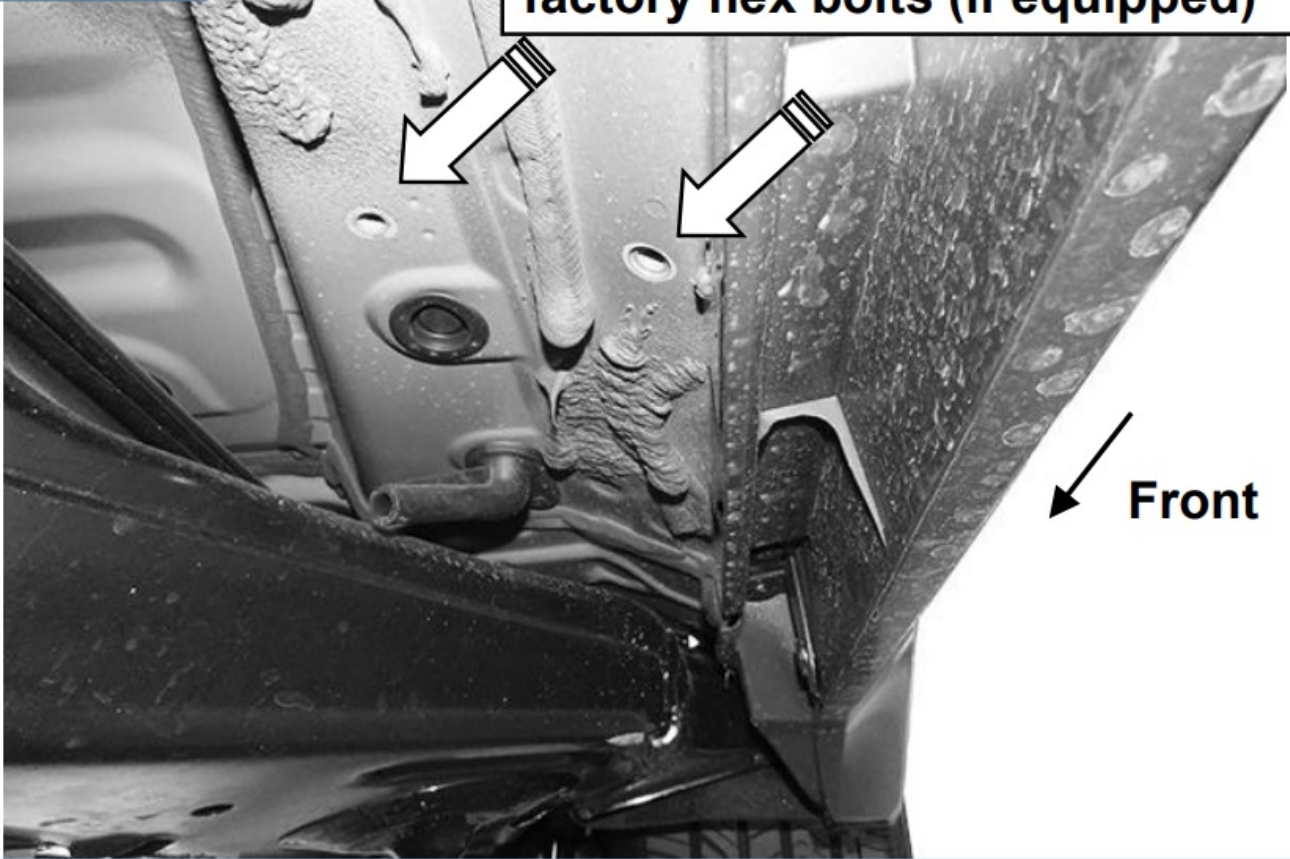
## **Installation Step**

### **STEP 1**

Starting on the Passenger/Right front of the vehicle, remove the plastic plugs, (or hex bolts), covering the threaded holes in the body panel, (Fig 1).

**FIG 1**

**Remove plastic plugs or  
factory hex bolts (if equipped)**

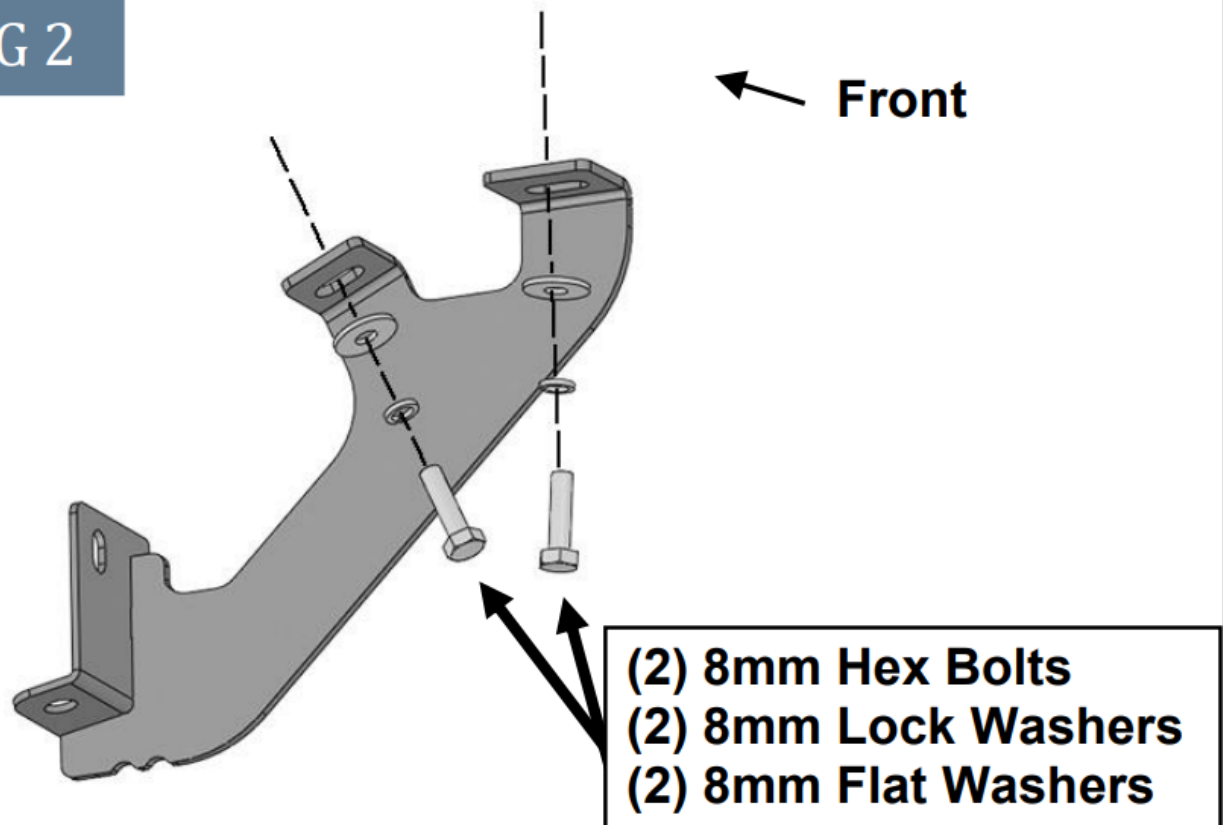


**(Fig 1) Passenger/Right side front mounting  
location**

**STEP 2**

Select the Passenger/Right Front Mounting Bracket. Attach the Bracket to the vehicle with (2) 8mm Hex Bolts, (2) 8mm Lock Washers and (2) 8mm Flat Washers, (Fig 2). Do not tighten hardware at this time.

**FIG 2**



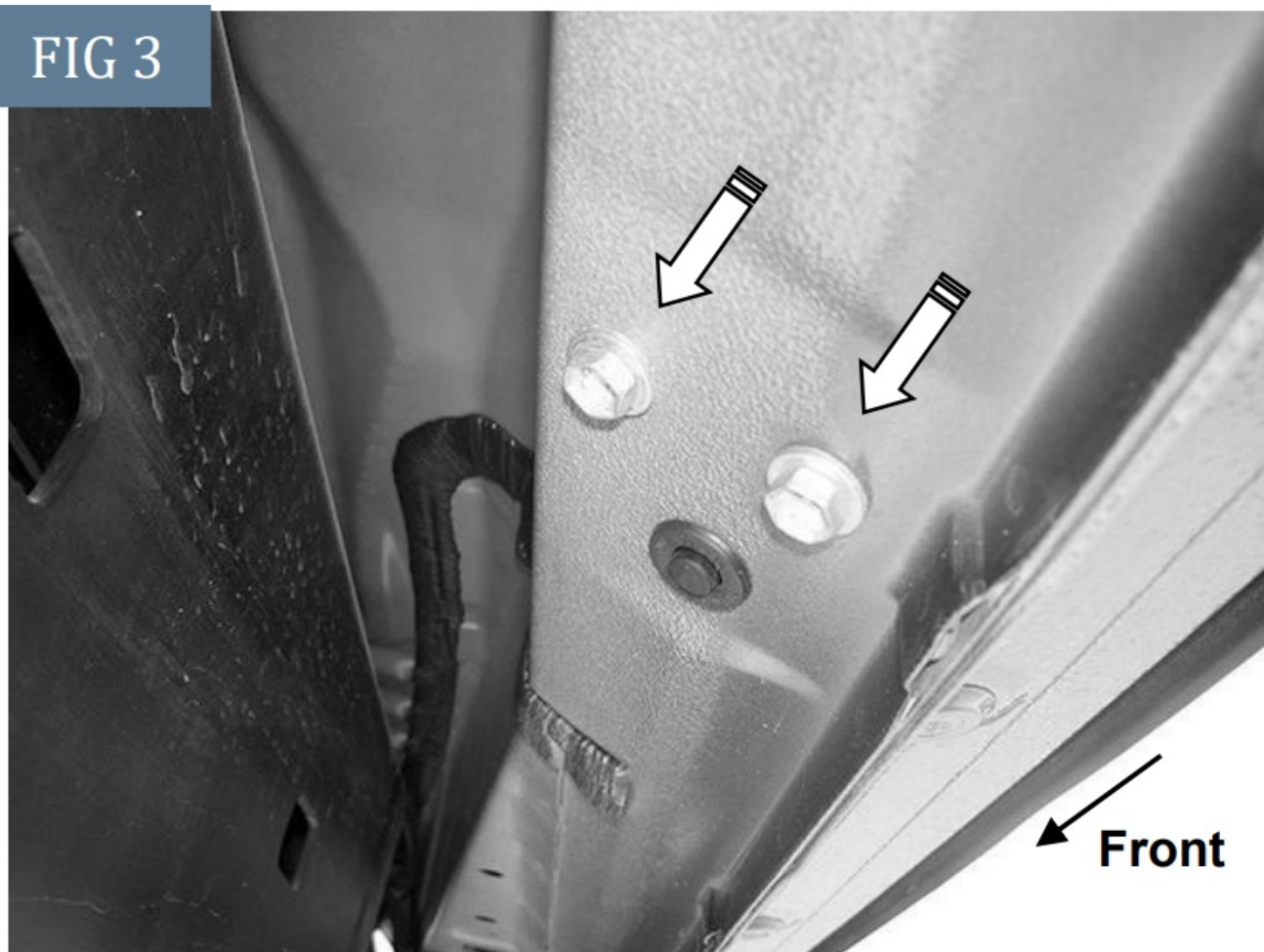
**(Fig 2) Attach Passenger/Right Front Mounting Bracket to the front mounting location**

**STEP 3**

Next, move to the 2nd mounting location, (Fig 3).

Select the Passenger/Right side Center/Rear Mounting Bracket, (Fig 4). **IMPORTANT:** The Center and Rear Brackets are the same. Repeat Step 2 to install the center Mounting Bracket, (Fig 4).

**FIG 3**

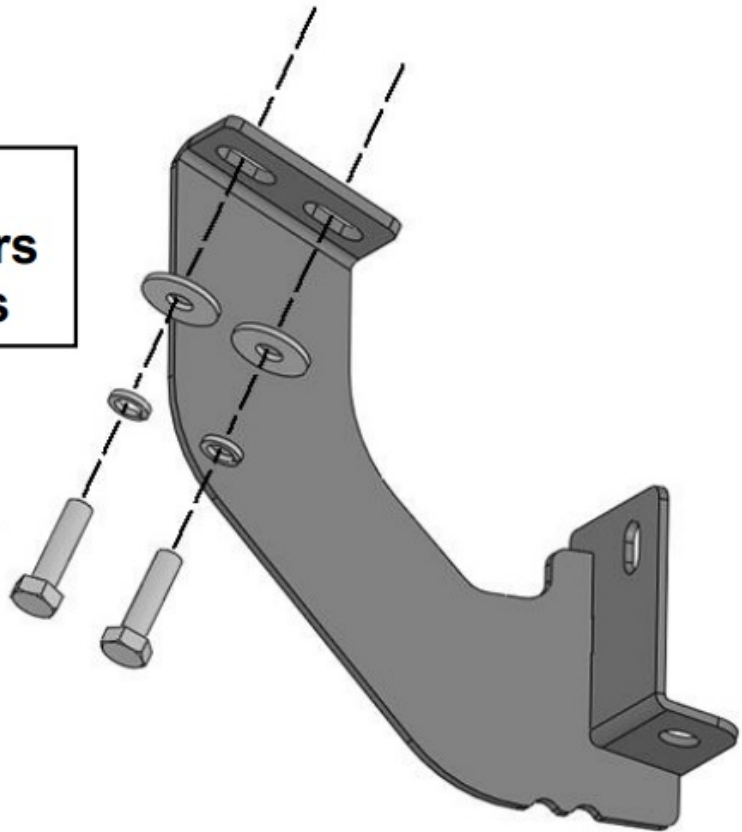


**(Fig 3) Passenger/Right center mounting location (2nd)**



**FIG 4**

**(2) 8mm Hex Bolts  
(2) 8mm Lock Washers  
(2) 8mm Flat Washers**



**(Fig 4) Attach Passenger/Right Center/Rear Mounting Brackets to the center mounting locations (2nd)**

**STEP 4**

Repeat Steps 3 to attach the (2) Passenger/Right Side Center & Rear Bracket to the (2) remaining Mounting Location.

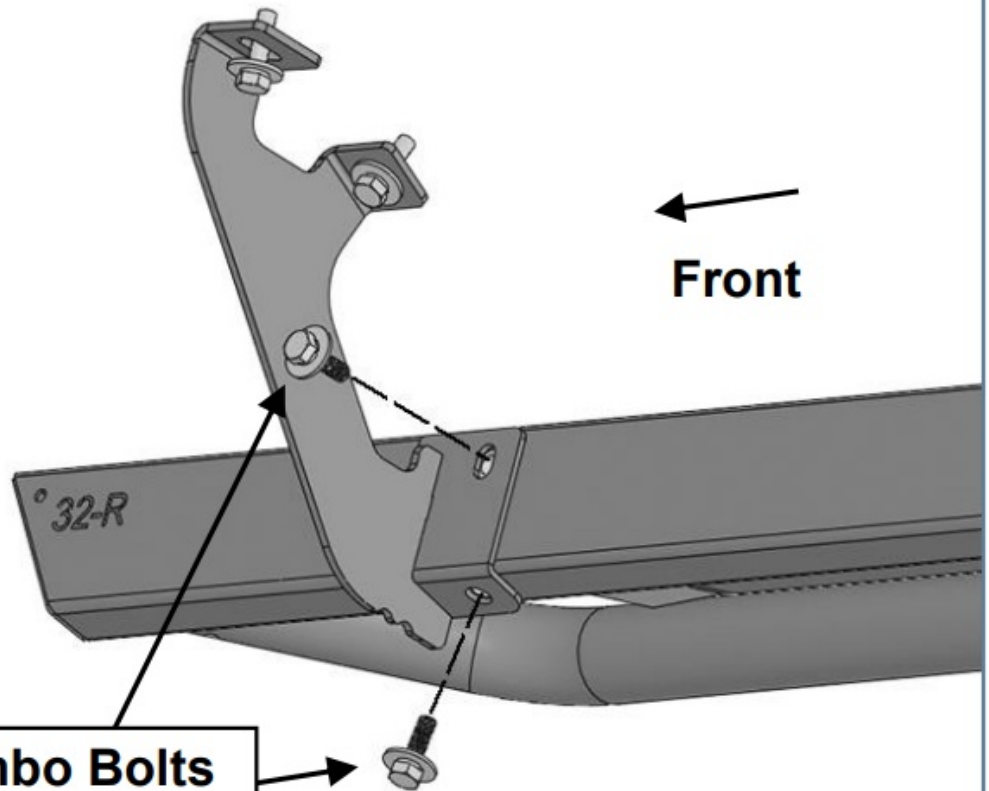
**STEP 5**

Select the Passenger/Right Rocker Step.

**NOTE:** The Passenger/Right will have a "32-R" on the front. Carefully place Rocker Step on the brackets.

**IMPORTANT:** Do not slide the Rocker Step front to back or damage to the finish may result. Attach Rocker Step to the Mounting Brackets with (6) 8mm Combo Bolts, (Fig 5). Do not tighten hardware.

**FIG 5**



**(Fig 5) Attach Passenger/Right Rocker Step to the Mounting Brackets**

**STEP 6**

Level and adjust the Rocker Step and fully tighten all hardware

**STEP 7**

Repeat Steps 1—6 to attach the Driver/Left Rocker Step.

**STEP 8**

Do periodic inspections to the installation to make sure that all hardware is secure and tight.

**Attention**

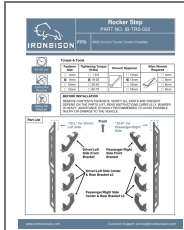
To protect your investment, do not use any type of polish or wax that may contain abrasives that could damage the finish.

Mild soap may be used also to clean the Running Boards.



---

## Documents / Resources



[IRONBISON IB-TRS-032 Rocker Step Running Boards](#) [pdf] Installation Guide  
IB-TRS-032 Rocker Step Running Boards, IB-TRS-032, Rocker Step Running Boards, Step Running Boards, Running Boards

## References

- [IRONBISON](#)
- [User Manual](#)

### Manuals+, Privacy Policy

This website is an independent publication and is neither affiliated with nor endorsed by any of the trademark owners. The "Bluetooth®" word mark and logos are registered trademarks owned by Bluetooth SIG, Inc. The "Wi-Fi®" word mark and logos are registered trademarks owned by the Wi-Fi Alliance. Any use of these marks on this website does not imply any affiliation with or endorsement.