




IRONBISON IB-TRS-030 Running Boards Instruction Manual

[Home](#) » [IRONBISON](#) » IRONBISON IB-TRS-030 Running Boards Instruction Manual 

IRONBISON IB-TRS-030 Running Boards



Contents

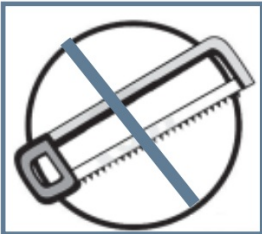
- [1 Important Information](#)
- [2 Torque & Tools](#)
- [3 BEFORE
INSTALLATION](#)
- [4 Part List](#)
- [5 Attention](#)
- [6 Customer Support](#)
- [7 Documents / Resources](#)
 - [7.1 References](#)
- [8 Related Posts](#)

Important Information

- 60-120 min





- Cutting Not Required



- Drilling Not Required



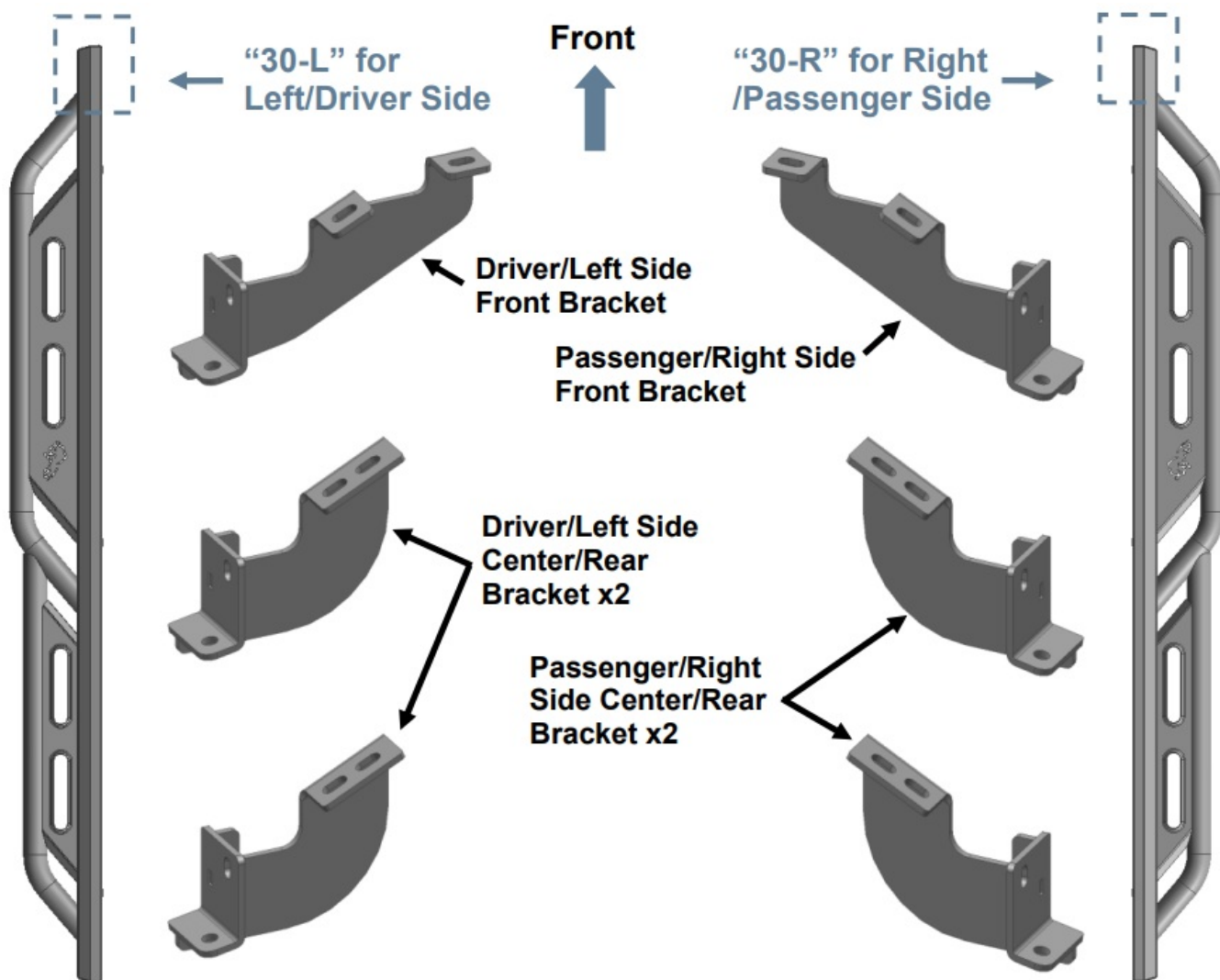
Torque & Tools

Fastener Size	Tightening Torque (ft-lbs)	Wrench Required		Allen Wrench Required	
<input type="checkbox"/> 6mm	<input type="checkbox"/> 7-8.5		<input type="checkbox"/> 10mm		<input type="checkbox"/> 4mm
<input checked="" type="checkbox"/> 8mm	<input checked="" type="checkbox"/> 18-20		<input checked="" type="checkbox"/> 13mm		<input type="checkbox"/> 5mm
<input type="checkbox"/> 10mm	<input type="checkbox"/> 35-40		<input type="checkbox"/> 16mm		<input type="checkbox"/> 6mm
<input type="checkbox"/> 12mm	<input type="checkbox"/> 60-70		<input type="checkbox"/> 18mm		<input type="checkbox"/> 8mm

BEFORE INSTALLATION

REMOVE CONTENTS FROM BOX. VERIFY ALL PARTS ARE PRESENT DEPEND ON THE PARTS LIST. READ INSTRUCTIONS CAREFULLY. BUMPER IS HEAVY, ASSISTANCE IS HIGHLY RECOMMENDED TO AVOID POSSIBLE INJURY OR DAMAGE TO THE VEHICLE.

Part List



- 8mm x 30mm Hex Bolt



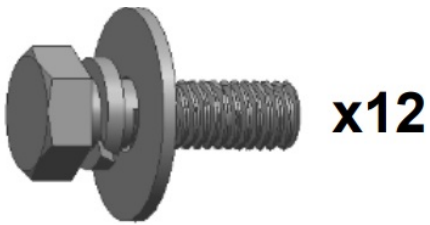
- 8mm Flat Washer



- 8mm Lock Washer



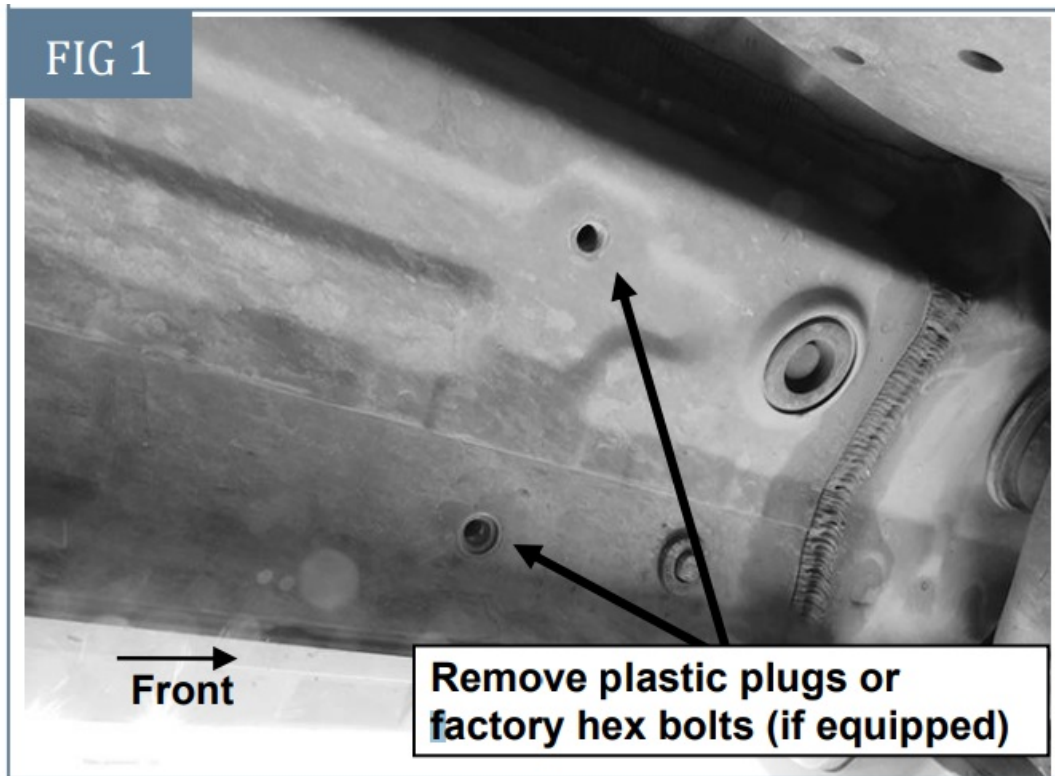
- 8mm x 25mm Combo Bolt



PLEASE NOTE THAT THE FOLLOWING PICTURES ARE BASED ON THE DRIVER SIDE INSTALLATION.

STEP 1

Starting on the Driver/Left front of the vehicle, remove the plastic plugs, (or hex bolts), covering the threaded holes in the body panel, (**Fig 1**).



STEP 2

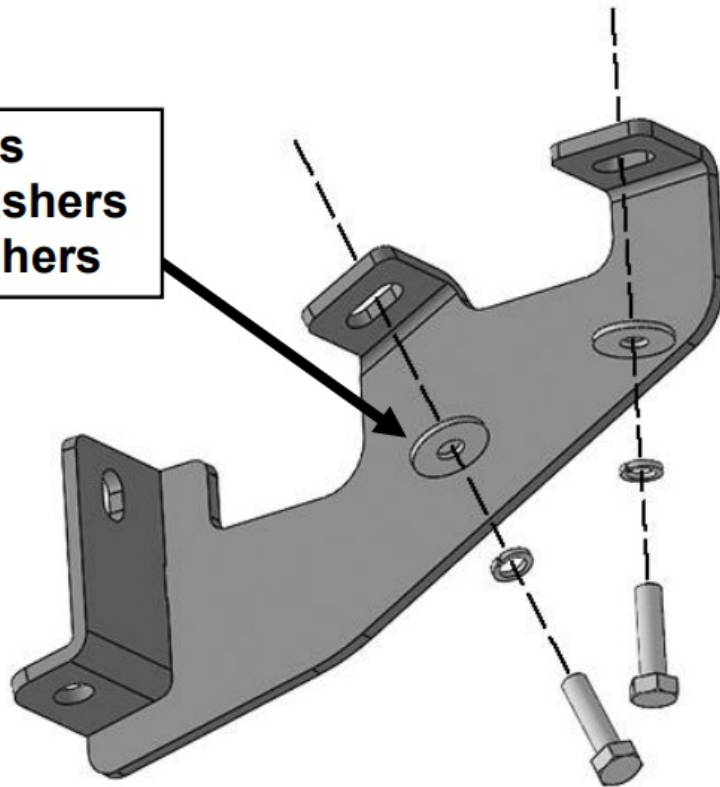
Select the Driver/Left Front Mounting Bracket.

Attach the Bracket to the front mounting location with (2) 8mm Hex Bolts, (2) 8mm Lock Washers and (2) 8mm Flat Washers, (**Figs 2**). Do not tighten hardware at this time.

FIG 2

(2) 8mm Hex Bolts
(2) 8mm Lock Washers
(2) 8mm Flat Washers

Front

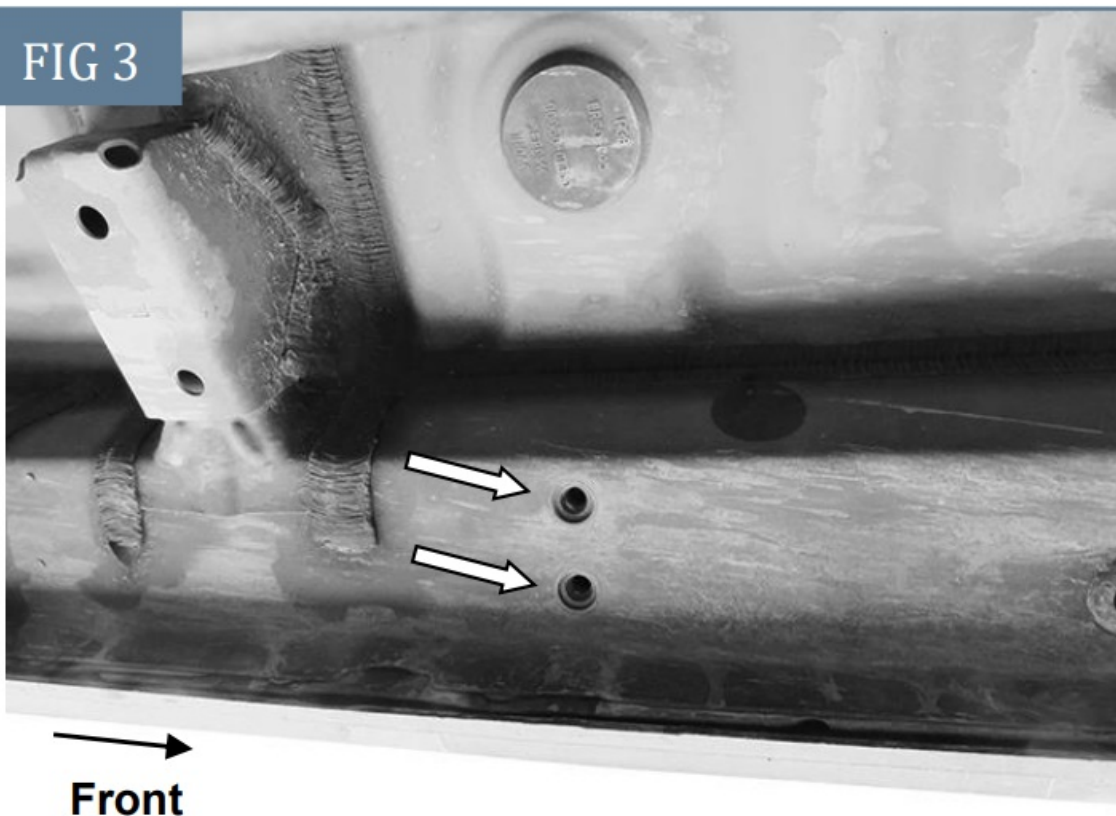


(Fig 2) Attach Driver/Left Front Mounting Bracket to the front mounting location

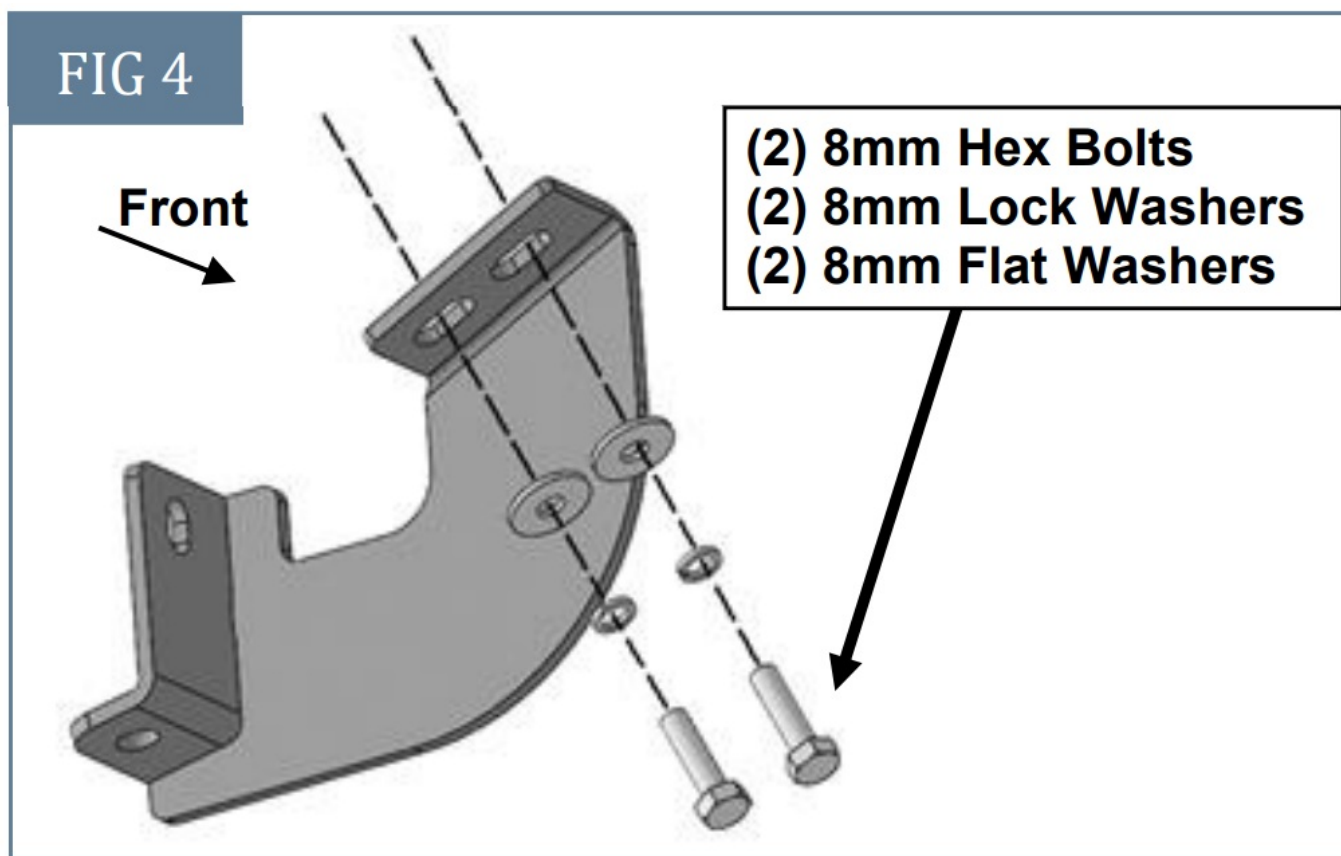
STEP 3

Move along the body panel to the center mounting location, **(Fig 3)**. Select (1) Driver/Left Center/Rear Mounting Brackets. Attach the Mounting Bracket on center mounting location, **(Fig 4)**. Do not tighten hardware.

FIG 3



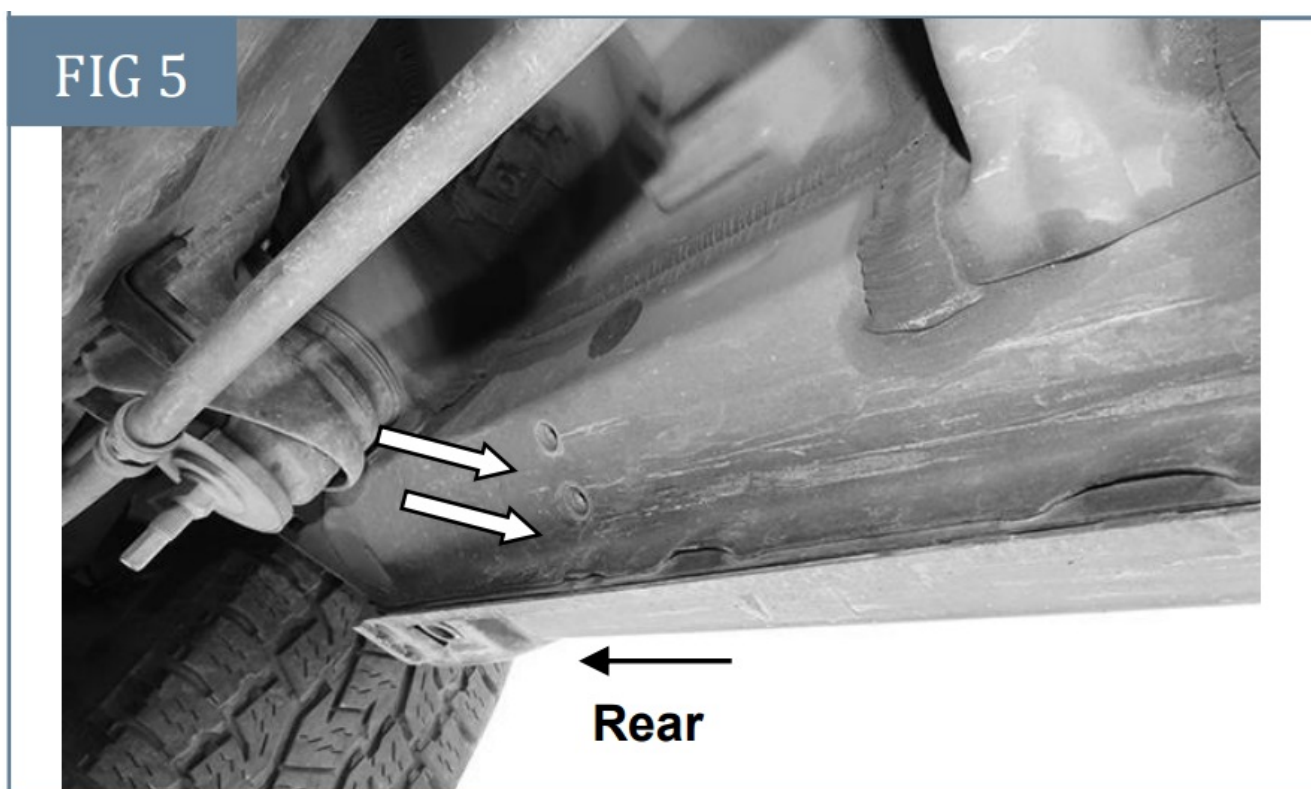
(Fig 3) Driver/Left center mounting location



(Fig 4) Attach (1) Driver/Left Center/Rear Mounting Bracket to the center location.

STEP 4

Repeat Step 3 to attach the remaining (1) Driver/Left Center/Rear Mounting Bracket to the rear location, (Fig 5). Do not tighten hardware.



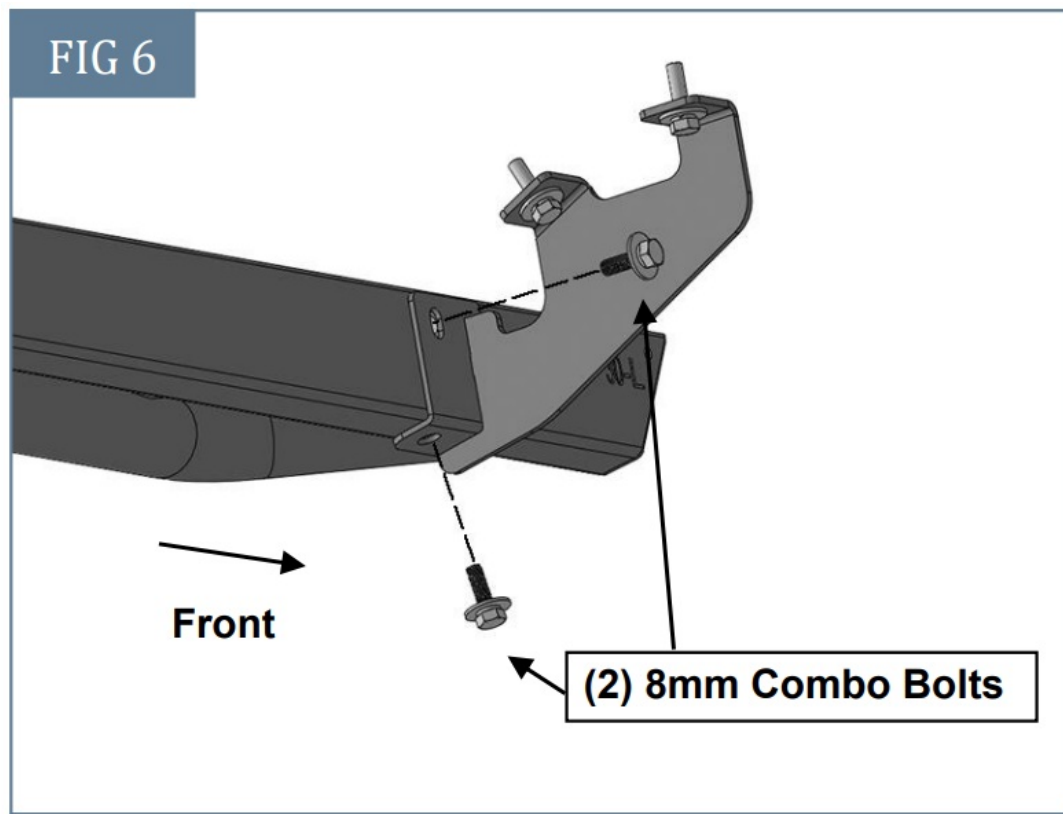
(Fig 5) Diver/Left rear mounting location

STEP 5

Select the Driver/Left Rocker Step.

NOTE: The Driver/Left Rocker Step will have a “30-L” on the front. Carefully place Rocker Step on the brackets.

IMPORTANT: Do not slide the Rocker Step front to back or damage to the finish may result. Attach Rocker Step to the Mounting Brackets with (6) 8mm Combo Bolts, (**Fig 6**). Do not tighten hardware.



(Fig 6) Attach the Driver/Left Rocker Step to the (3) Mounting Brackets

STEP 6

Level and adjust the Rocker Step and fully tighten all hardware.

STEP 7

Repeat Steps 1—6 to attach the Passenger/Right Rocker Step.

STEP 8

Do periodic inspections to the installation to make sure that all hardware is secure and tight.

Attention

To protect your investment, do not use any type of polish or wax that may contain abrasives that could damage the finish.

Mild soap may be used also to clean the Running Boards.

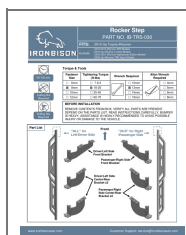
Customer Support

www.ironbisonauto.com

Customer Support: service@ironbisonauto.com



Documents / Resources



[IRONBISON IB-TRS-030 Running Boards](#) [pdf] Instruction Manual
IB-TRS-030 Running Boards, IB-TRS-030, Running Boards, Boards

References

- [IRONBISON](#)
- [User Manual](#)

Manuals+. [Privacy Policy](#)

This website is an independent publication and is neither affiliated with nor endorsed by any of the trademark owners. The "Bluetooth®" word mark and logos are registered trademarks owned by Bluetooth SIG, Inc. The "Wi-Fi®" word mark and logos are registered trademarks owned by the Wi-Fi Alliance. Any use of these marks on this website does not imply any affiliation with or endorsement.