

IRONBISON IB-FCS1-08 Front Bumper Compatible



IRONBISON IB-FCS1-08 Front Bumper Compatible Instruction Manual

[Home](#) » [IRONBISON](#) » IRONBISON IB-FCS1-08 Front Bumper Compatible Instruction Manual 

Contents

- [1 IRONBISON IB-FCS1-08 Front Bumper Compatible](#)
- [2 Torque & Tools](#)
- [3 Part List](#)
- [4 Models with parking sensors](#)
- [5 Documents / Resources](#)
 - [5.1 References](#)



IRONBISON IB-FCS1-08 Front Bumper Compatible



Torque & Tools





90-180 min



Cutting May
Required



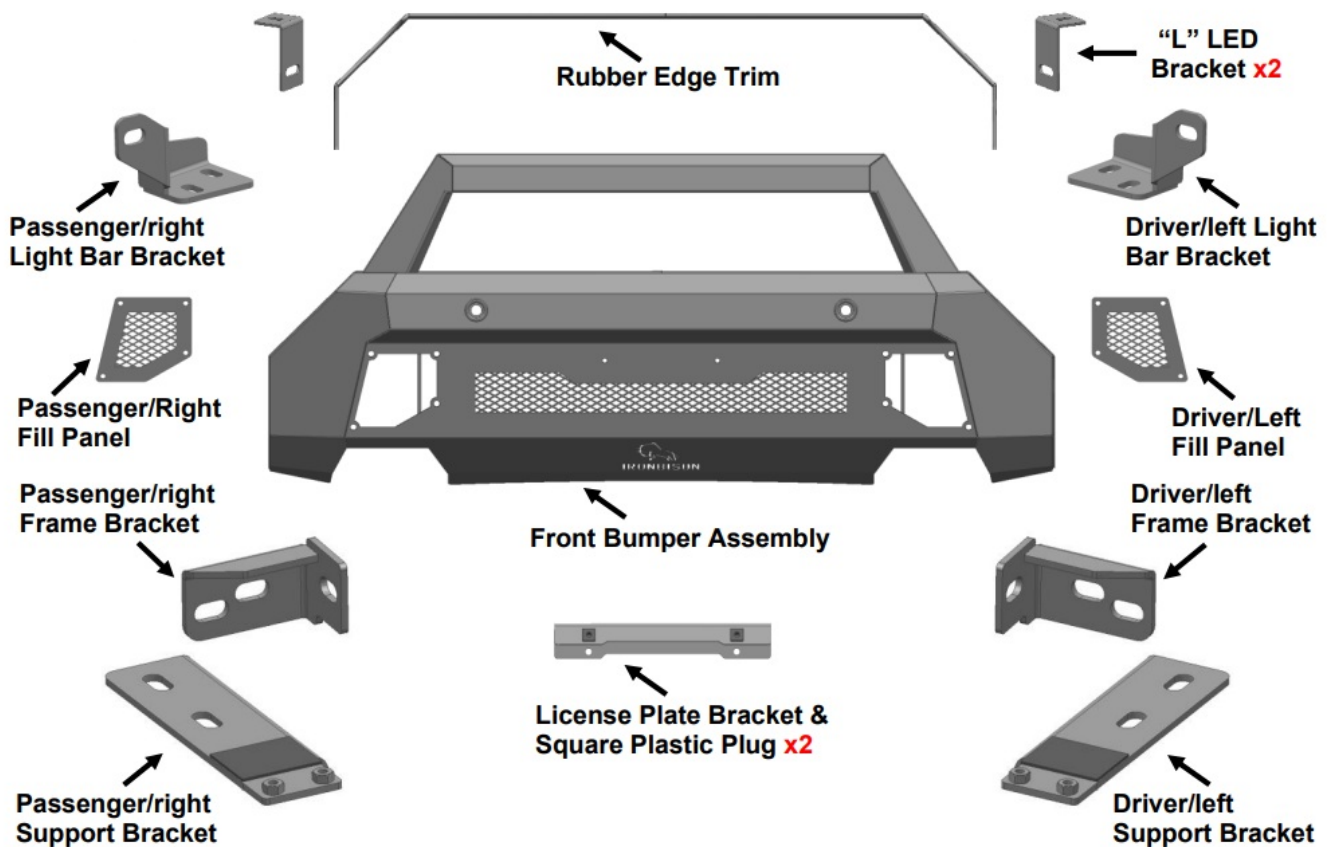
Drilling Not
Required

Fastener Size	Tightening Torque (ft-lbs)	Wrench Required		Allen Wrench Required	
■ 6mm	■ 7-8.5		□ 10mm		■ 4mm
■ 8mm	■ 18-20		■ 13mm		□ 5mm
□ 10mm	□ 35-40		□ 16mm		□ 6mm
■ 12mm	■ 60-70		■ 18mm		□ 8mm

BEFORE INSTALLATION

REMOVE CONTENTS FROM THE BOX. VERIFY ALL PARTS ARE PRESENT. READ INSTRUCTIONS CAREFULLY BEFORE STARTING INSTALLATION. THE BUMPER IS HEAVY, ASSISTANCE IS HIGHLY RECOMMENDED TO AVOID POSSIBLE INJURY OR DAMAGE TO THE VEHICLE. BUMPER IS NOT COMPATIBLE WITH ACC (ADAPTIVE CRUISE CONTROL). FUNCTION MUST BE DISABLED OR SENSOR RELOCATED.

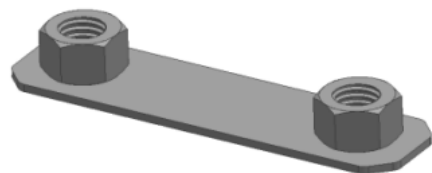
Part List



Use to attach the Bumper & Brackets to the frame

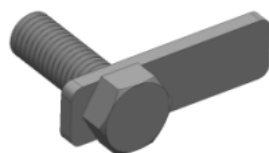
Use to attach LED

- Light Bar and Brackets to the Bumper: (Stainless Steel)



12mm Double
Nut Plate

x2



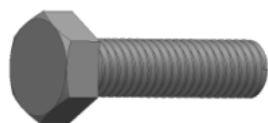
12mm Bolt
Plate

x4



12mm Plastic
Retainer

x2



12mm x 45mm
Hex Bolt

x4



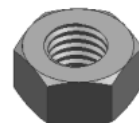
12mm Lock
Washer

x8



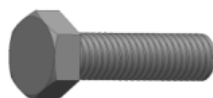
12mm x 32mm x 3mm
Flat Washer

x8



12mm Hex
Nut

x4



8mm x **25mm**
Hex Bolt

x4



8mm Lock
Washer

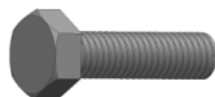
x4



8mm x **16mm**
Flat Washer

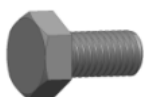
x4

- Use to attach the Mesh Fill Panels and License Plate Bracket to the Bumper



8mm x **25mm**
Hex Bolt

x2



8mm x **16mm**
Hex Bolt

x2



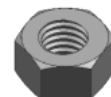
8mm x **24mm** Flat
Washer

x6



8mm Lock
Washer

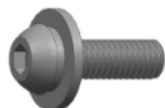
x4



8mm Hex
Nut

x2

- Use to attach the Parking Sensors on the Bumper



6mm x 20mm
Combo Bolt

x8



6mm x 20mm
Button Head Bolt

x2



6mm x 18mm
Flat Washer

x4



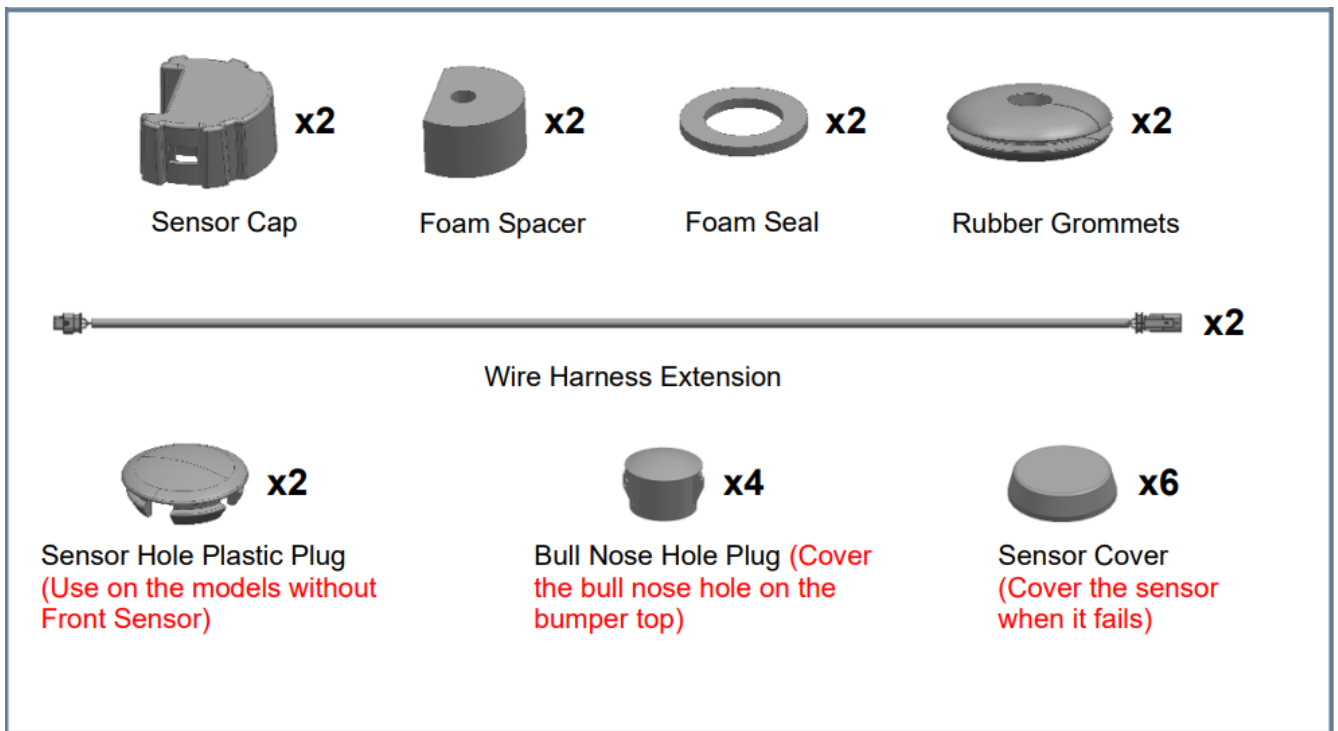
6mm Nylon
Lock Nut

x2



4mm Allen
Wrench

x1

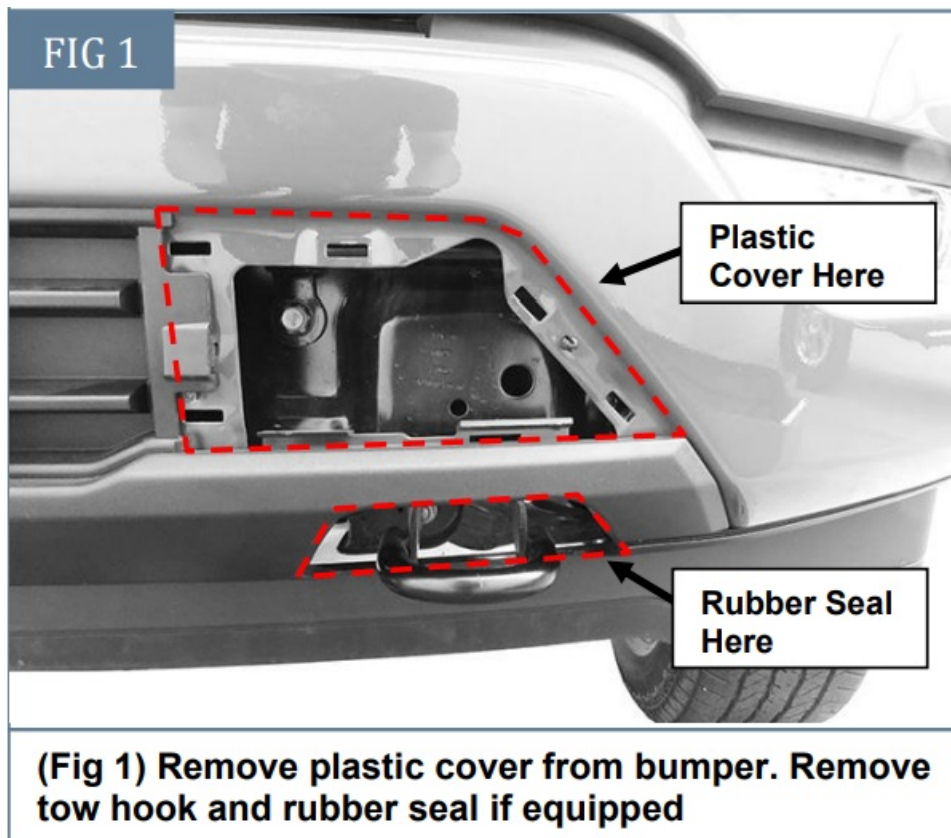


STEP 1

Remove the license plate and bracket.

STEP 2

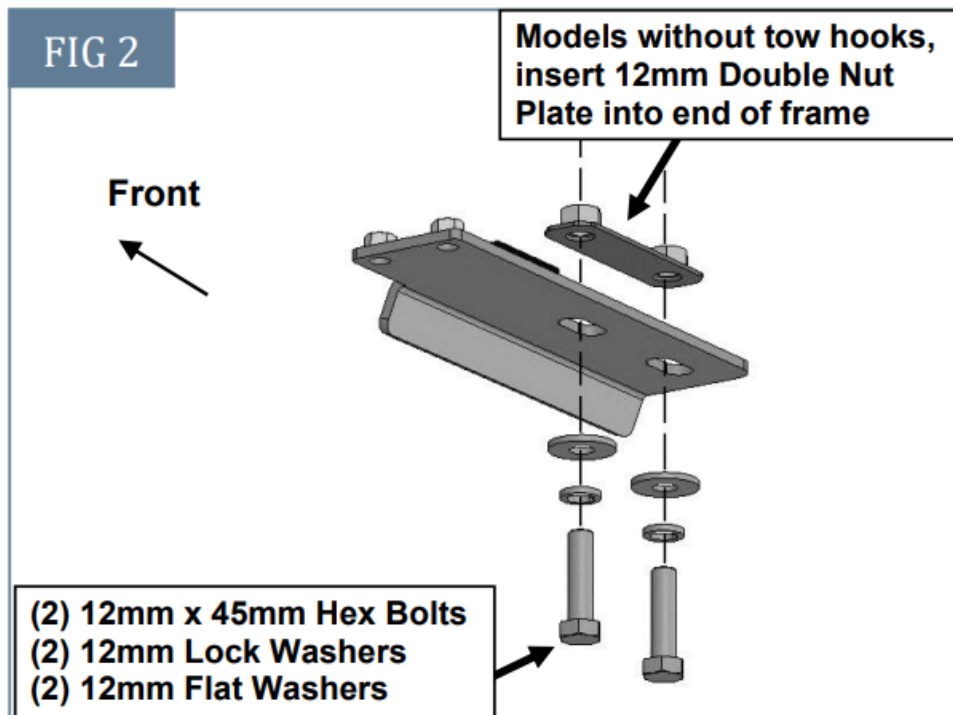
Remove the driver/left side tow hook and rubber seal, (Fig 1). On models without tow hooks, insert the included (1) 12mm Double Nut Plate into the end of the frame. Line up the Nut Plate with the holes in the bottom of the frame. (Fig 1) Remove the plastic cover from the bumper. Remove the tow hook and rubber seal if equipped.



STEP 3

Attach the driver/left Support Bracket to the bottom of the frame, between the tow hook and the frame, with the included (2) 12mm x 45mm Hex Bolts, (2) 12mm Lock Washers and (2) 12mm Flat Washers, (Figs 2 & 3). Do not

fully tighten the hardware at this time.



(Fig 2) Attach driver/left Support Bracket to bottom of frame, between tow hook and frame.

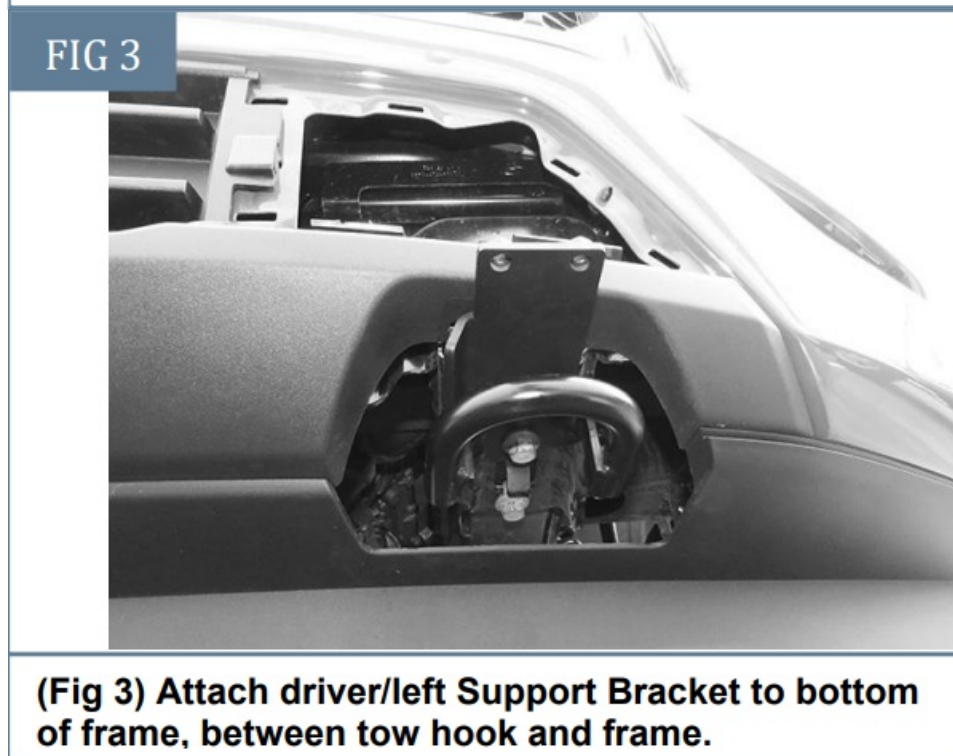
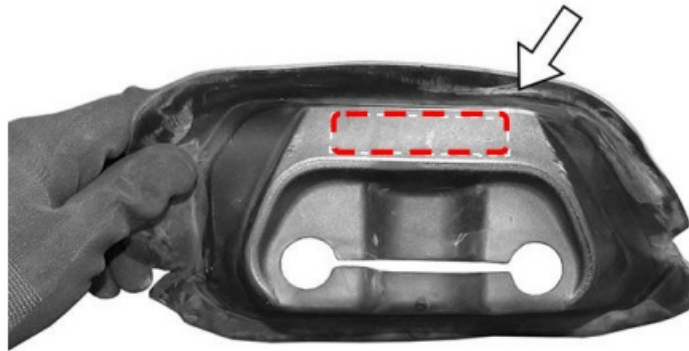


FIG 4



(Fig 4) Rubber seal must be cut to clear the Support Bracket, (arrow). Note, reinstallation optional

IMPORTANT: The rubber seal around the tow hook must be cut to clear the Support Bracket, (Fig 4). Reinstallation is optional.

STEP 4

Remove the driver/left side plastic cover from the centre of the bumper, (Fig 1). Insert (1) 12mm Bolt Plate into the hole in the inner bumper bracket. Thread (1) 12mm Plastic Retainer onto the Bolt Plate to help hold it in place, (Fig 5). **NOTE:** A plastic Retainer is supplied to help with Bracket installation. Use is not mandatory for installation.

FIG 5

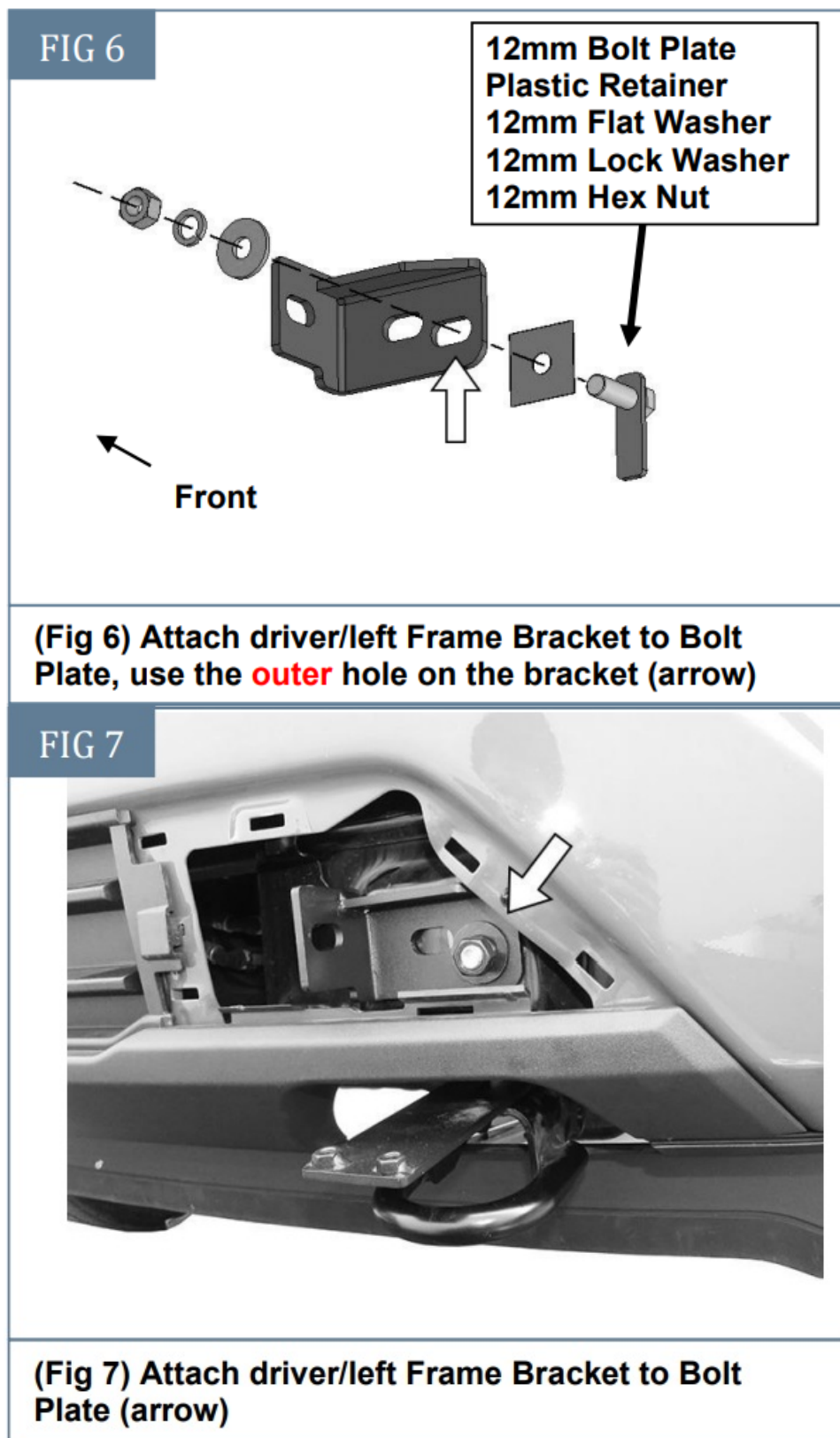


(Fig 5) Insert Bolt Plate into hole in inner bumper bracket. Thread Plastic Retainer onto Bolt Plate to hold in place

STEP 5

Select the driver/left Frame Mounting Bracket. Slide the Bracket over the Bolt Plate.

IMPORTANT: Guide the “outer” hole in the Bracket over the Bolt Plate, (Fig 6). Attach the Bracket to the Bolt Plate with the included (1) 12mm Flat Washer, (1) 12mm Lock Washer and (1) 12mm Hex Nut, (Fig 7). Snug but do not fully tighten hardware at this time.



STEP 6

Repeat Steps 2—5 to attach the passenger/right Support and Frame Brackets, (Figs 8—10).

FIG 8



(Fig 8) Insert Bolt Plate into hole in inner bumper bracket (arrow)

FIG 9

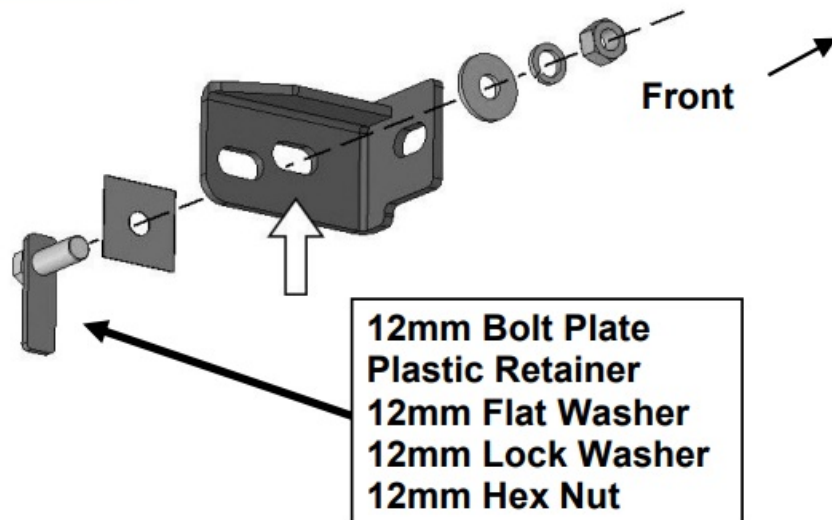


FIG 10



(Fig 10) Attach passenger/right Frame Bracket to Bolt Plate (arrow)

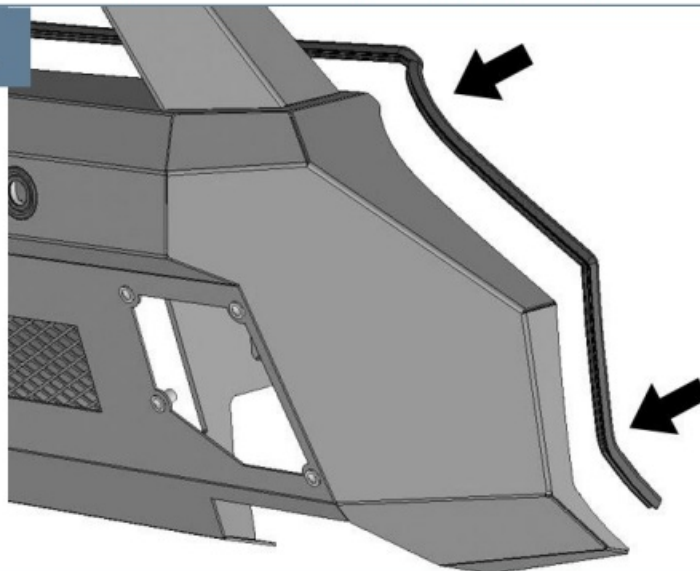
IMPORTANT: Use the “inner” hole in the passenger/right Frame Mounting Bracket to attach the Bracket to the Bolt Plate.

STEP 7

Unwrap the Bumper. Apply the included Edge Trim to the edge of the Bumper, (Fig 11).

Unwrap the Bumper. Apply the included Edge Trim to the edge of the Bumper, **(Fig 11)**.

FIG 11



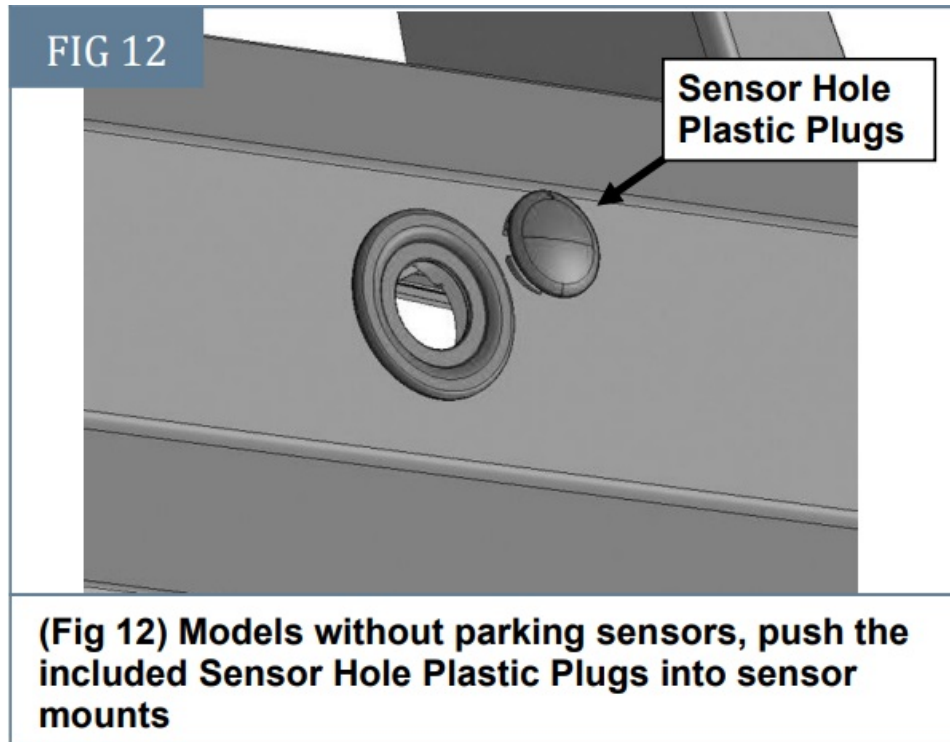
(Fig 11) Push Edge Trim onto edge of Bumper. Cut to fit Bumper

STEP 8

Determine if the bumper is equipped with front parking sensors.

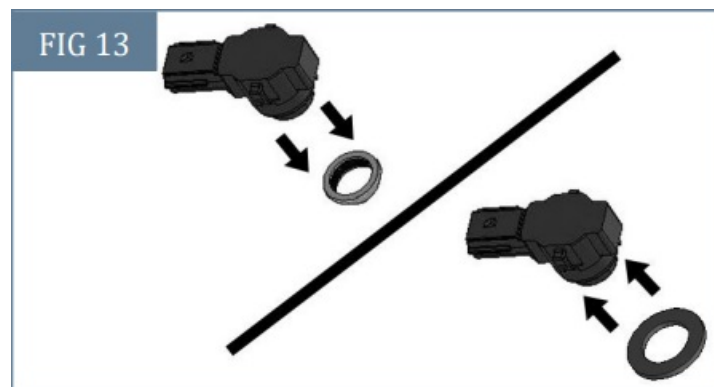
Models without sensors

- From the front of the Bumper, push the included Sensor Hole Plastic Plugs into sensor holes, (Fig 12).

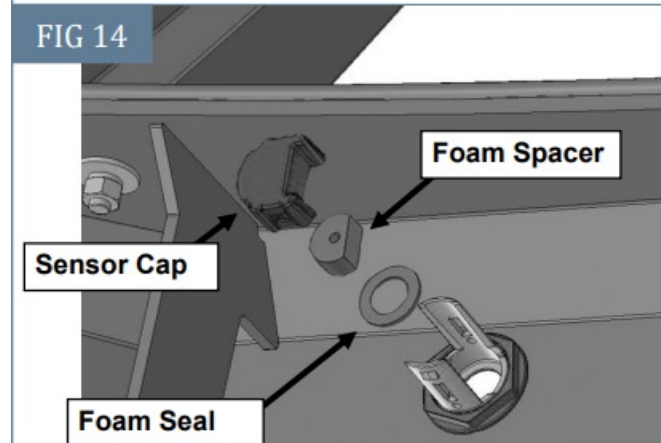


Models with parking sensors

- Unplug and remove the (2) centre sensors and holders from the plastic bumper cover.
- Remove the silicone seal from the end of the sensor, (Fig 13).
- Slide the included Foam Seal over the front of the sensor, (Fig 13).
- Insert sensor with Seal into sensor mount on Bumper, (Fig 14).



(Fig 13) Remove original silicone seal from sensor. Slide included Foam Seal over end of sensor



(Fig 14) Insert sensor assembly into the sensor mount on back of Bumper

- Place a Thick Foam Spacer over the end of the sensor.
- Push the Sensor Cap onto the sensor mount and snap it into place, (Fig 14).
- Repeat the previous Steps to install the remaining sensor.
- Slide the (1) Rubber Grommet onto (1) Wiring Harness Extension, (Fig 15).



(Fig 15) Slide Grommet onto Harness Extension. Plug Extension into factory wiring harness. Push Grommet into sensor hole in original plastic bumper cover

- Plug the Wiring Harness Extension into the bumper wiring harness.
- Push the Grommet into the hole in the truck's plastic bumper cover.
- Repeat to install the remaining Harness with Grommet.

STEP 9

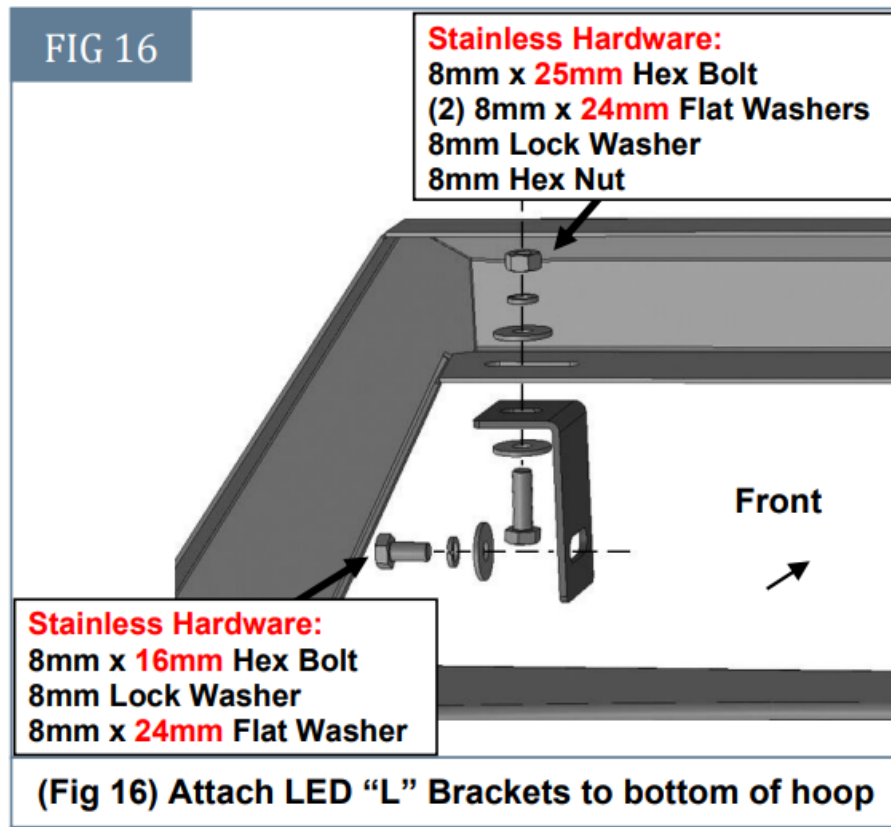
Determine if Bull Nose Hoop (preinstalled on the Bumper) will be used. NOTE: Bull Nose Hoop may interfere with

a grille-mounted camera if equipped and is not recommended for this option.

Top LED light installation with Bull Nose Hoop

(Fit 20" LED light bar, light not included; Use stainless hardware):

- Select the (1) "L" LED Brackets, (Fig 16). Attach the Brackets to the bottom of the Bull Nose Hoop with the included (2) 8mm x 25mm Hex Bolts, (4) 8mm x 24mm Flat Washers, (2) 8mm Lock Washers and (2) 8mm Hex Nuts. Leave loose at this time.



- Attach the LED light assembly to the "L" LED Brackets with the included (2) 8mm x 16mm Hex Bolts, (2) 8mm Lock Washers and (2) 8mm x 24mm Flat Washers, (Fig 16). Do not fully tighten the hardware at this time.
IMPORTANT: "L" Brackets are designed for 8mm light mounting hardware only. Modify "L" Brackets if necessary or use brackets supplied by the light manufacturer to install hardware larger than 8mm.
- Follow the light manufacturer's instructions to properly wire the light.

LED Light installation on top of Bumper, Bull Nose Hoop Removed (Fit 30" LED light bar, light not included):

- Remove the Bull Nose Hoop. Reuse the mounting hardware to attach the driver/left Light Bracket to the top of the Bumper, (Fig 17). Repeat to install the passenger/right Light Bracket.
- Attach the LED light assembly to the Brackets with the included (2) 8mm x 16mm Hex Bolts, (2) 8mm Lock Washers and (2) 8mm x 24mm Flat Washers, (stainless hardware), (Fig 16). Do not fully tighten the hardware at this time.
IMPORTANT: Brackets are designed for 8mm light mounting hardware only. Modify Brackets if necessary to install hardware larger than 8mm.
- Follow the light manufacturer's instructions to properly wire the light to the vehicle. d. If the light will not be installed, use the included (4) Bull Nose Hole Plugs to cover the mounting holes in the top of the Bumper, (Fig 17).

FIG 17

Reuse these hardware

(2) Bull Nose Hole Plugs

Front

(Fig 17) If Bullnose Hoop will not be used, reuse the hardware to attach the LED Brackets to top of Bumper or fill holes with the included Hole Plugs. Driver/left side installation illustrated

STEP 10

On models requiring a front license plate, attach the License Plate Bracket to the front of the Bumper with the included (2) 6mm x 20mm Button Head Bolts, (4) 6mm Flat Washers and (2) 6mm Nylon Lock Nuts (Fig 18). Insert the (2) Square Plastic Plugs into the square holes in the Bracket. Reuse the factory hardware to attach the license plate to the Plugs in the Bracket.

FIG 18

(2) Square Plastic Plugs

**(2) 6mm x 20mm Button Head Bolts
(4) 6mm Flat Washers
(2) 6mm Nylon Lock Nuts**

(Fig 18) Attach License Plate Bracket if required

STEP 11

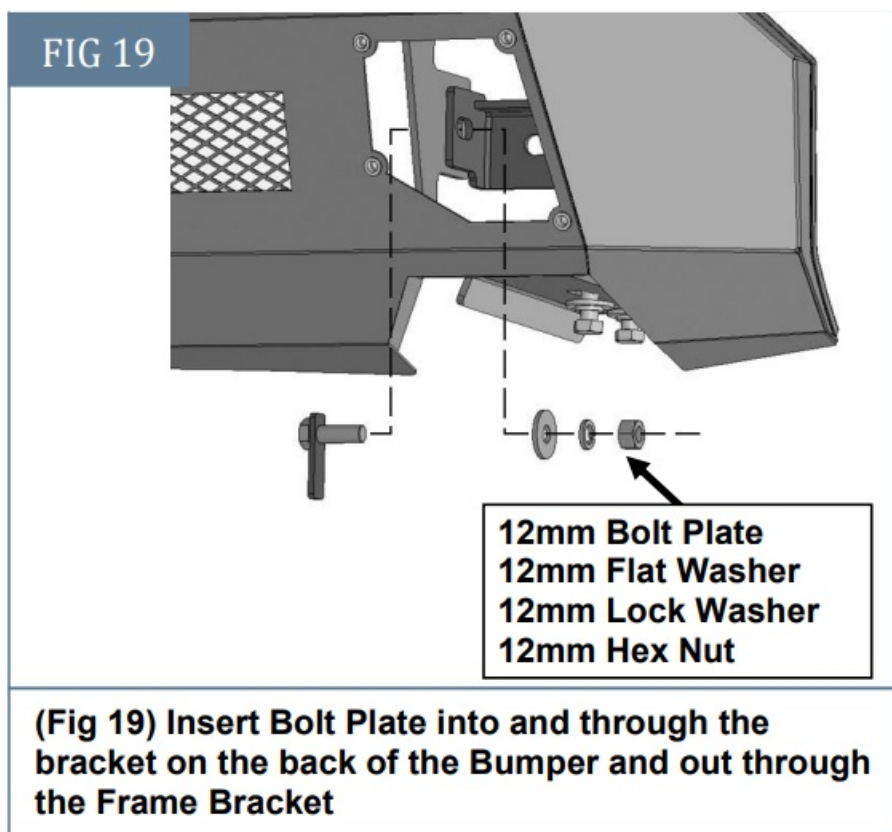
With assistance, position the Bumper Assembly up to the front of the vehicle. On models with parking sensors, plug the wiring harnesses into the parking sensors. Hold the Bumper up to the inside of the Frame Mounting Brackets. Temporarily support the weight of the Bumper.

WARNING: To avoid possible injury or damage to the vehicle, do not proceed until the bumper is fully and safely supported.

WARNING! Do not crawl under the bumper unless it is properly supported on blocks or stands or the bumper may fall.

STEP 12

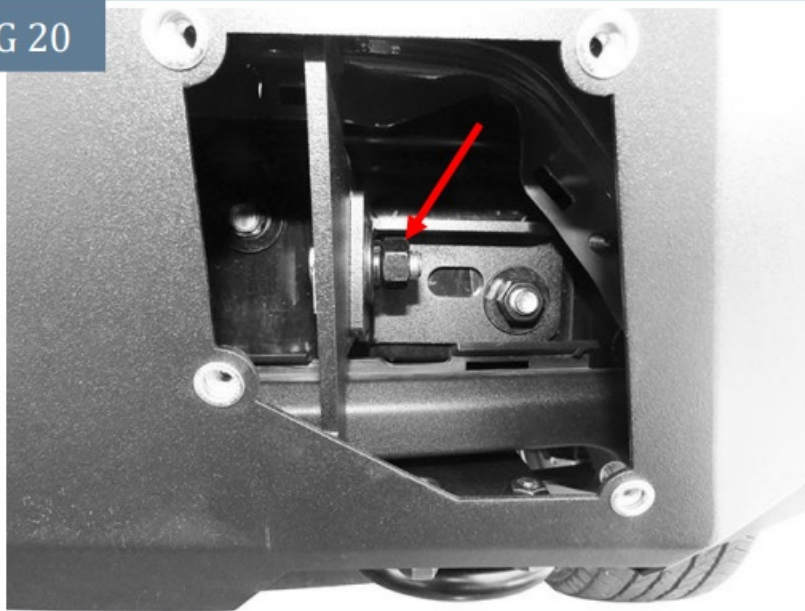
Insert (1) 12mm Bolt Plate into the opening in the Bumper. Guide the Bolt Plate into and through the back of the mounting plate on the Bumper and through the Frame Bracket, (Fig 19). Attach the Bumper and Bracket to the Bolt Plate with (1) 12mm Flat Washer, (1) 12mm Lock Washer and (1) 12mm Hex Nut, (Fig 20). Repeat this Step to attach the passenger/right side of the Bumper.



STEP 13

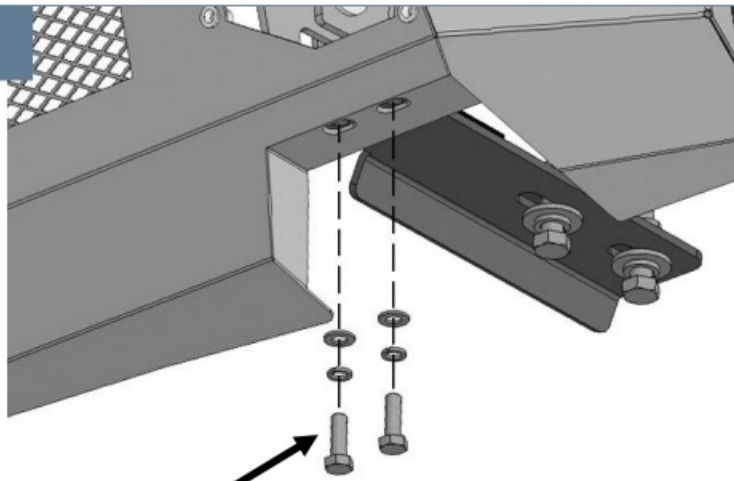
Attach the bottom of the Bumper to the driver/left Support Bracket with the included (2) 8mm x 25mm Hex Bolts, (2) 8mm Lock Washers and (2) 8mm x 16mm Small Flat Washers, (Figs 21 & 22). Repeat this Step to attach the passenger/right side of the Bumper to the Support Bracket.

FIG 20



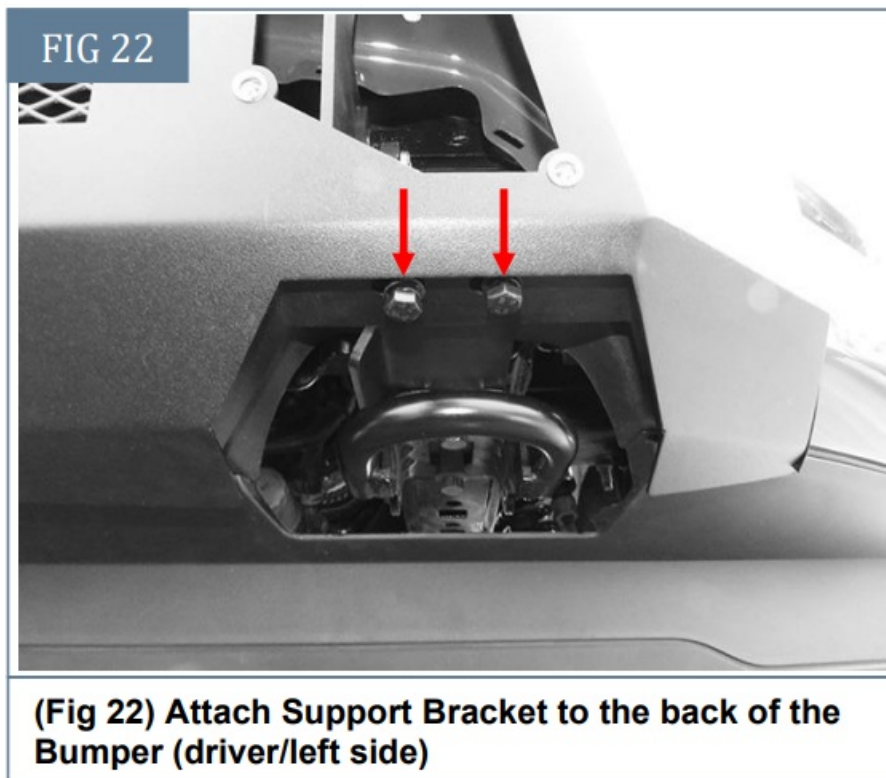
(Fig 20) Insert Bolt Plate into and through the bracket on the back of the Bumper and out through the Frame Bracket

FIG 21



(2) 8mm x 25mm Hex Bolts
(2) 8mm Lock Washers
(2) 8mm x **16mm** Flat Washers

(Fig 21) Attach Support Bracket to the back of the Bumper (driver/left side)

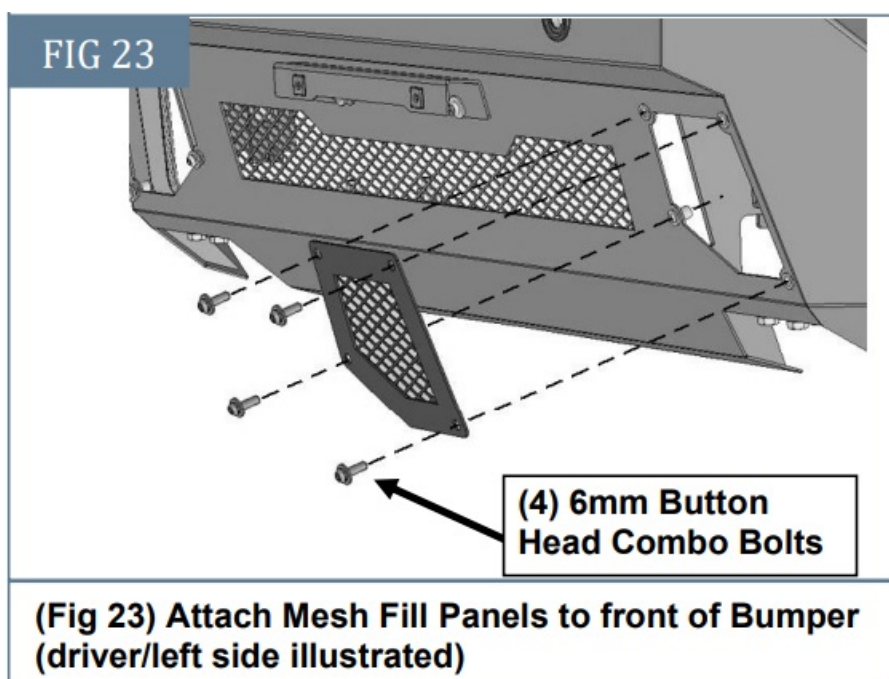


STEP 14

Level and adjust the bumper and fully tighten all hardware.

STEP 15

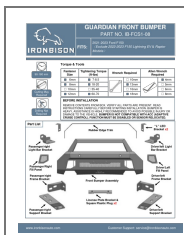
Select the driver/left Mesh Fill Panel. Attach the Panel to the front of the Bumper with (4) 6mm Button Head Combo Bolts, (Fig 23). Repeat this Step to install the passenger/right Fill Panel.



STEP 16

Do periodic inspections of the installation to make sure that all hardware is secure and tight.

Documents / Resources



[IRONBISON IB-FCS1-08 Front Bumper Compatible](#) [pdf] Instruction Manual
IB-FCS1-08 Front Bumper Compatible, IB-FCS1-08, Front Bumper Compatible, Bumper Compa
tible, Compatible

References

- [User Manual](#)

Manuals+, Privacy Policy

This website is an independent publication and is neither affiliated with nor endorsed by any of the trademark owners. The "Bluetooth®" word mark and logos are registered trademarks owned by Bluetooth SIG, Inc. The "Wi-Fi®" word mark and logos are registered trademarks owned by the Wi-Fi Alliance. Any use of these marks on this website does not imply any affiliation with or endorsement.