

IRONBISON IB-FCS1-06 Front Bumper



## IRONBISON IB-FCS1-06 Front Bumper Installation Guide

[Home](#) » [IRONBISON](#) » IRONBISON IB-FCS1-06 Front Bumper Installation Guide 

### Contents

- [1 IRONBISON IB-FCS1-06 Front Bumper](#)
- [2 Product Usage Instructions](#)
- [3 Frequently Asked Questions](#)
- [4 Torque & Tools](#)
- [5 Part List](#)
- [6 INSTALLATION](#)
- [7 Documents / Resources](#)
  - [7.1 References](#)
- [8 Related Posts](#)



**IRONBISON IB-FCS1-06 Front Bumper**



## Product Specifications

- **Product Name:** Guardian Front Bumper
- **Part Number:** IB-FCS1-06
- **Fits:** 2015-2017 Ford F150 (Exclude Raptor Models)
- **Installation Time:** 90-180 minutes
- **Cutting Required:** May be required
- **Drilling Required:** Not required

## Product Usage Instructions

### Before Installation

- Remove contents from the box and verify all parts are present based on the parts list.
- Read the instructions carefully.
- Bumper is heavy, assistance is highly recommended to avoid possible injury or damage to the vehicle.

### Step 1: Preparation

Remove the license plate and bracket. Next, remove the plastic bumper pads from the bumper. Unplug and remove the adaptive cruise control, if equipped.

### Step 2: Frame Bracket Installation

1. Remove the factory hex nuts attaching the driver/left side of the bumper to the end of the frame.
2. Attach the Frame Mounting Bracket to the inner bumper bracket and frame using the factory hex nuts. Do not fully tighten the hardware at this time. Repeat for the passenger/right side.

Step 3.1: Lower Support Bracket Installation for Models with Tow Hooks

1. If the vehicle is equipped with tow hooks, follow these steps:
1. Remove the rubber seal around the tow hook and loosen the rear mounting bolt.

2. Slide the Lower Support Bracket between the tow hook and the bottom of the frame.

3. Reinstall the front factory tow hook bolt. Do not fully tighten the hardware at this time.

4. Cut the rubber seal to reinstall over the Bracket.

Frequently Asked Questions

**Q: Is drilling required for installing the Guardian Front Bumper?**

A: No, drilling is not required for installation. However, cutting may be required in some cases.

**Q: How long does it take to install the bumper?**

A: The installation time is estimated to be between 90 to 180 minutes.

Torque & Tools



90-180 min





Cutting May  
Required



Drilling Not  
Required

Torque & Tools

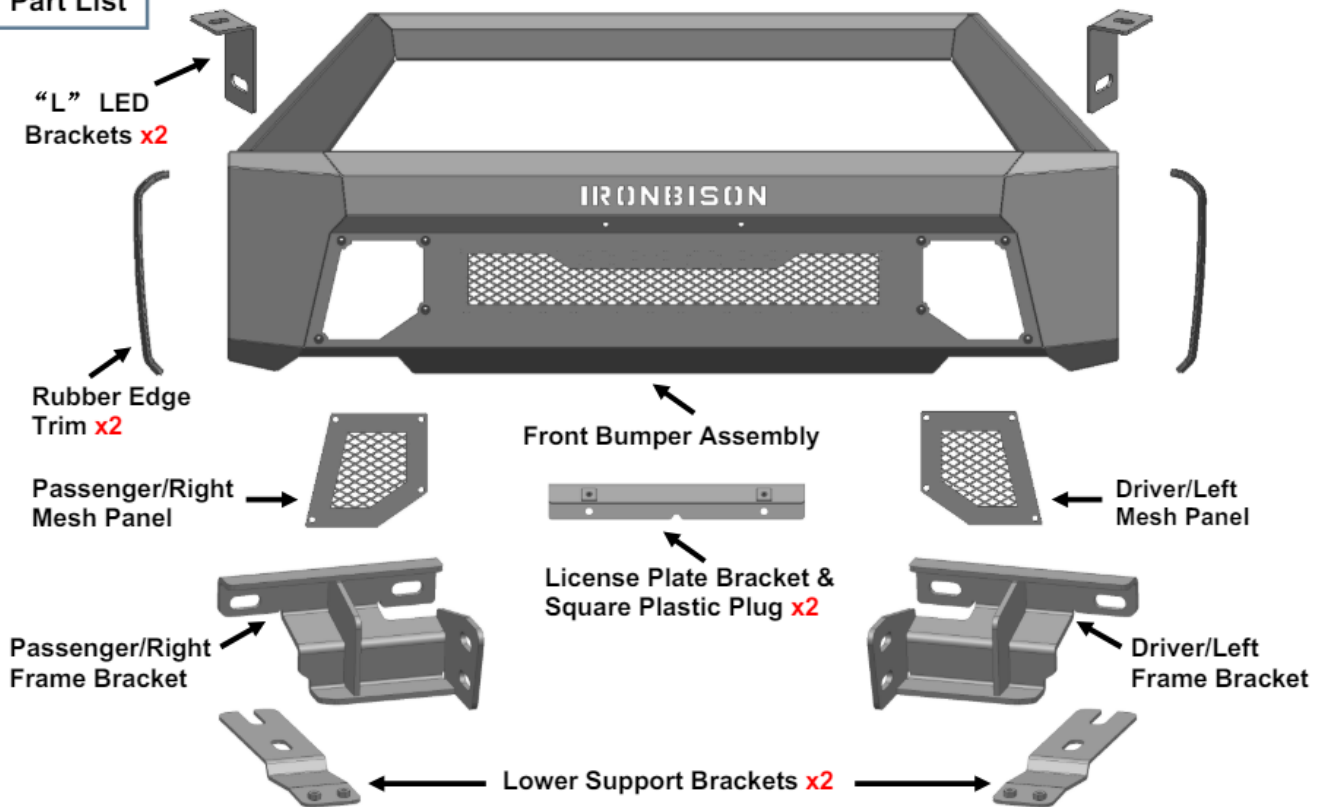
Fastener Size	Tightening Torque (ft-lbs)	Wrench Required		Allen Wrench Required	
<input checked="" type="checkbox"/> 6mm	<input checked="" type="checkbox"/> 7-8.5		<input type="checkbox"/> 10mm		<input checked="" type="checkbox"/> 4mm
<input checked="" type="checkbox"/> 8mm	<input checked="" type="checkbox"/> 18-20		<input checked="" type="checkbox"/> 13mm		<input type="checkbox"/> 5mm
<input checked="" type="checkbox"/> 10mm	<input checked="" type="checkbox"/> 35-40		<input checked="" type="checkbox"/> 16mm		<input type="checkbox"/> 6mm
<input checked="" type="checkbox"/> 12mm	<input checked="" type="checkbox"/> 60-70		<input checked="" type="checkbox"/> 18mm		<input type="checkbox"/> 8mm

**BEFORE INSTALLATION**

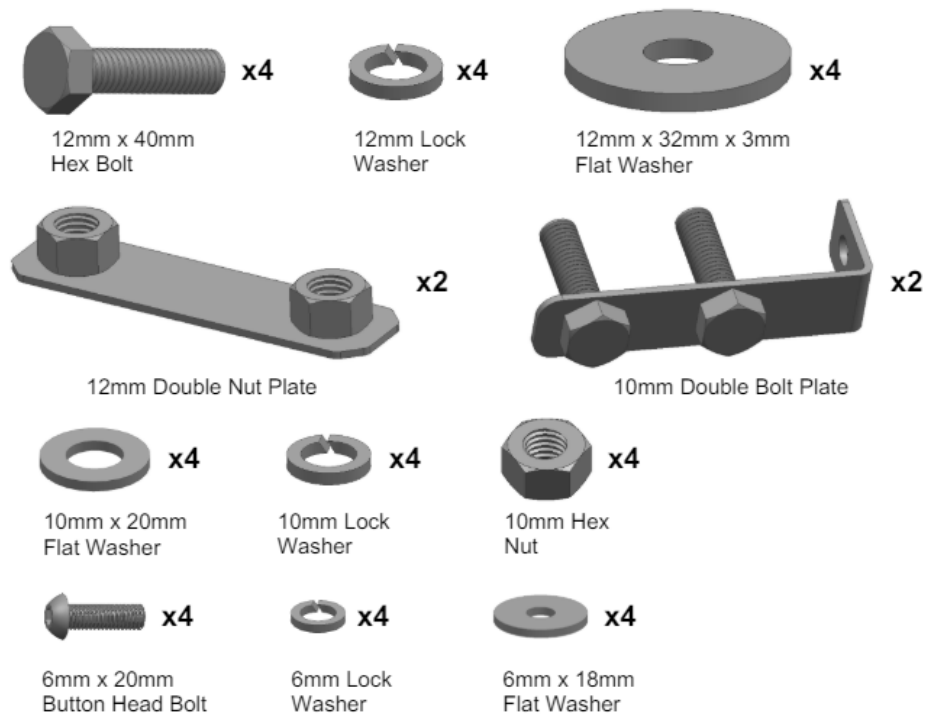
REMOVE CONTENTS FROM BOX. VERIFY ALL PARTS ARE PRESENT  
DEPEND ON THE PARTS LIST. READ INSTRUCTIONS CAREFULLY. BUMPER  
IS HEAVY, ASSISTANCE IS HIGHLY RECOMMENDED TO AVOID POSSIBLE  
INJURY OR DAMAGE TO THE VEHICLE.

Part List

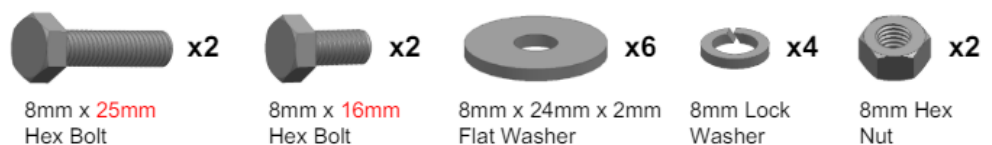
## Part List



Use to attach the Bumper and Brackets to the frame:



Use to attach LED Light Bar to the Bumper:



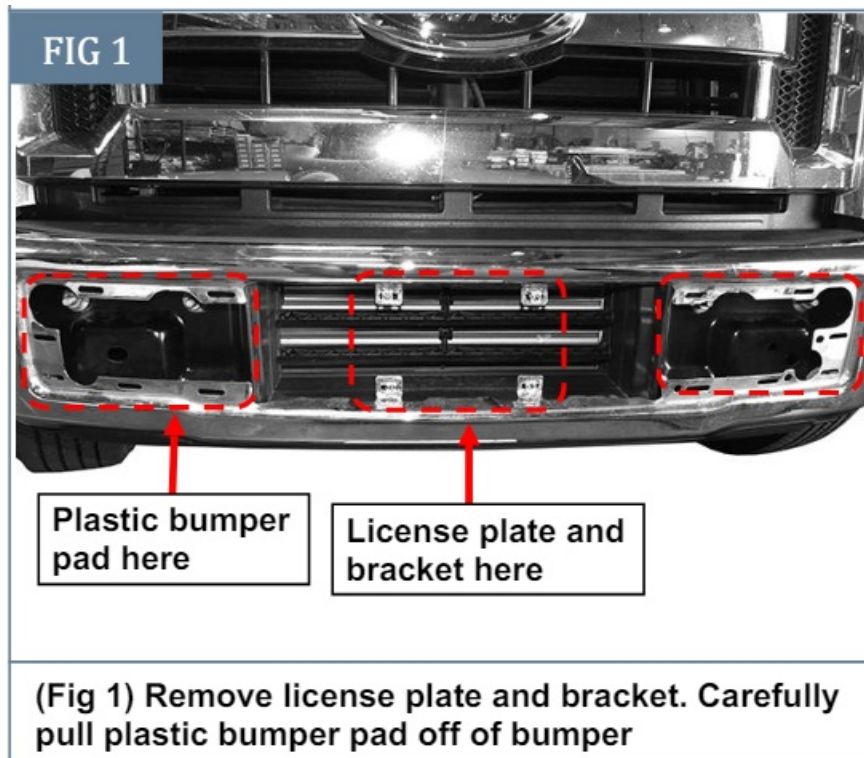
Use to attach Mesh Fill Panels & License Plate Bracket to the Bumper:



## INSTALLATION

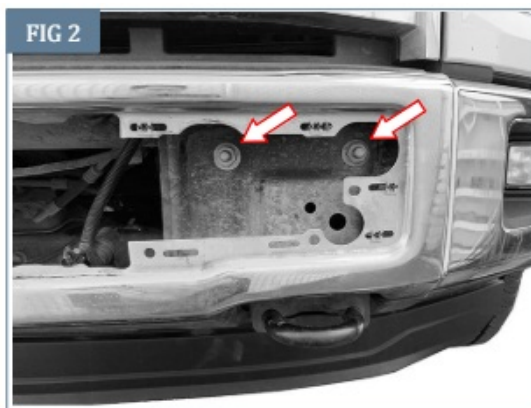
### STEP 1

Remove the license plate and bracket. Next, remove the plastic bumper pads from the bumper, (Fig 1). NOTE: Pull bumper pads straight out to release metal clips. Unplug and remove the adaptive cruise control, if equipped.

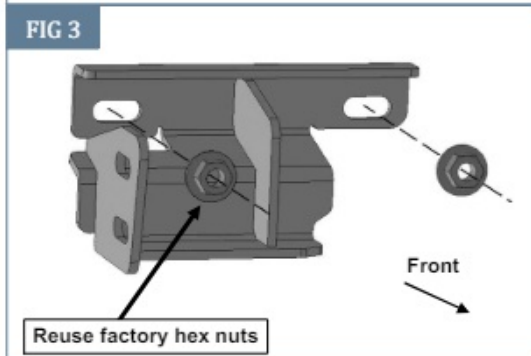


### STEP 2

Remove the (2) factory hex nuts attaching the driver/left side of the bumper to the end of the frame, (Fig 2). Select the driver/left side Frame Mounting Bracket, (Figs 3 & 4). Reuse the factory hex nuts to attach the Frame Mounting Bracket to the inner bumper bracket and frame. Do not fully tighten hardware at this time. Repeat this Step to install the passenger/right Frame Bracket.



(Fig 2) Remove (2) factory hex nuts (arrows)



(Fig 3) Reuse factory hex nuts to install Frame Mounting Brackets (driver/left Frame Bracket illustrated)



(Fig 4) Driver/left Frame Bracket installed

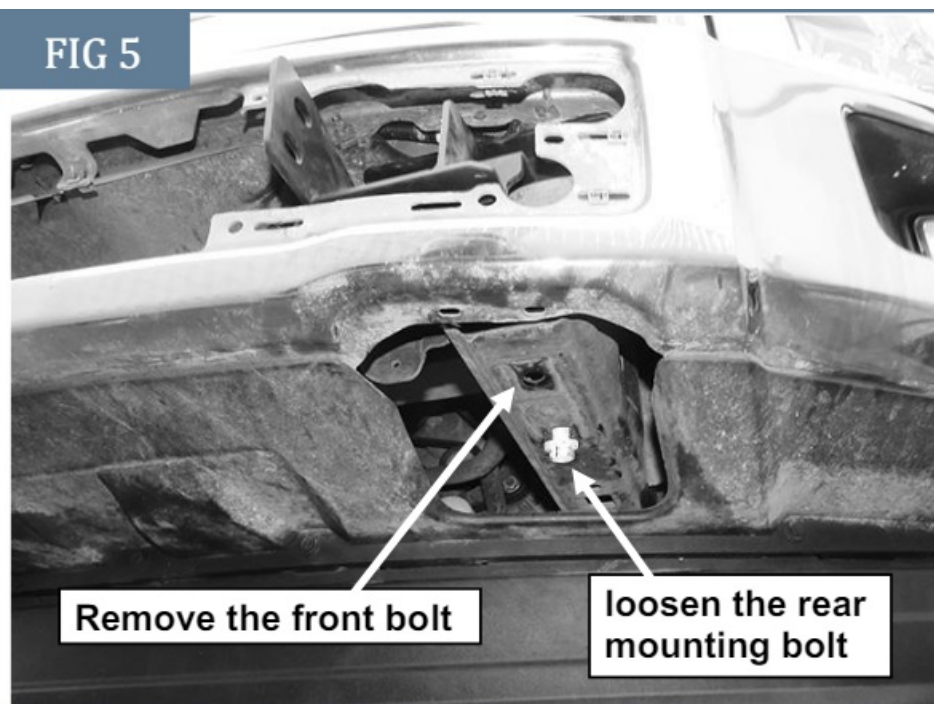
### STEP 3.1

Determine if vehicle is equipped with tow hooks to install lower Support Brackets.

#### Models with tow hooks:

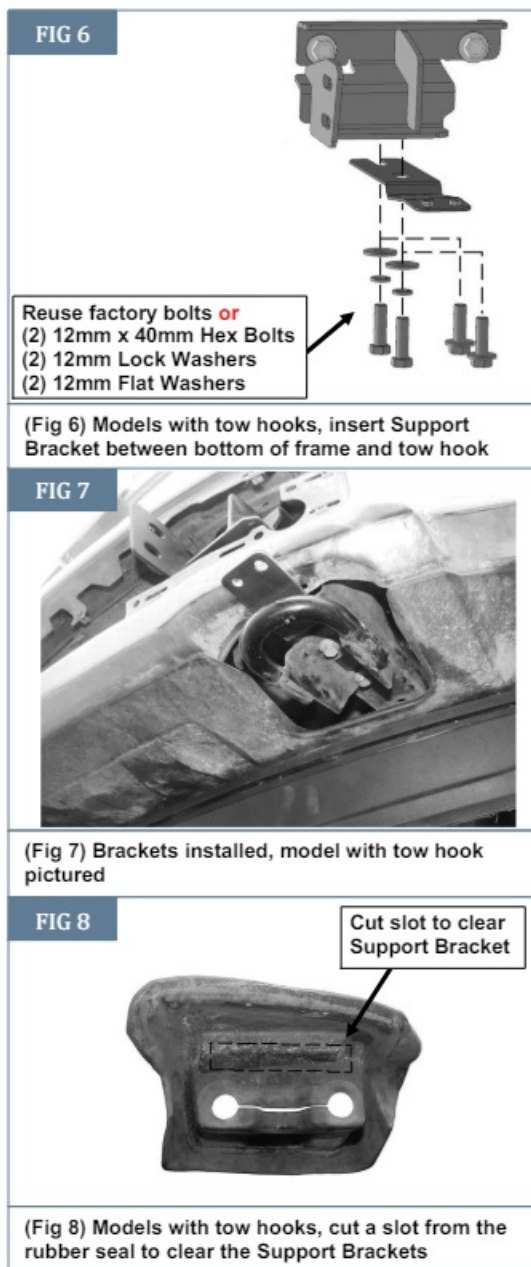
- a. Remove the rubber seal around the tow hook. Remove the front bolt but only loosen the rear mounting bolt, (Fig 5). Leave tow hook in place.
- b. Select (1) Lower Support Bracket. Slide the Support Bracket between tow hook and the bottom of the frame, (Figs 6 & 7). Reinstall the front factory tow hook bolt. Do not fully tighten hardware at this time. NOTE: Cut the rubber seal to reinstall over Bracket, (Fig 8).

**FIG 5**



**(Fig 5) Models with tow hooks, remove forward bolt, loosen but do not remove rear bolt to hold factory double nut plate in place in frame**





## STEP 3.2

### Models without tow hooks.

- a. Select the included (1) 12mm Double Nut Plate. Apply a short piece of tape, (duct or masking tape for example) to the end of the Nut Plate to act as a temporary handle, (Fig 9). Slide the Nut Plate into the open end of the frame and over the holes in the bottom of the frame, (Fig 5). NOTE: On some models, it may be necessary to loosen or remove the large hex nuts (1 per side) attaching the back of the bumper to the bumper bracket to tilt the bumper forward to insert the Double Nut Plates into the frame, (Fig 10).
- b. Select (1) Support Bracket. Use a sharp knife or hacksaw blade to cut a slot out of the lower plastic splash guard to clear the Support Bracket, (Fig 11).
- c. Slide the Support Bracket through the slot and attach the Support Bracket to the bottom of the frame and Double Nut Plate with the included (2) 12mm x 40mm Hex Bolts, (2) 12mm Lock Washers and (2) 12mm Flat Washers, (Fig 12). Do not tighten.

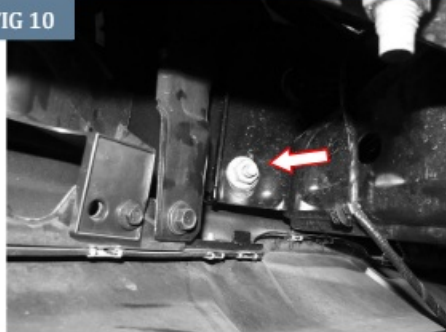


FIG 9



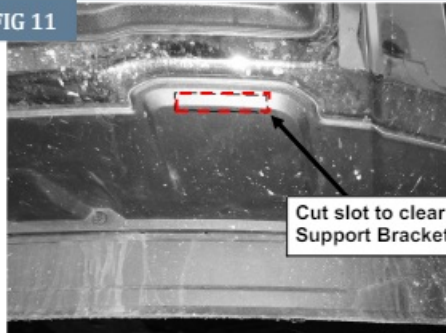
(Fig 9) If necessary, apply tape (masking, duct tape for example) to extend the reach to line up the Double Nut Plate with holes in the frame

FIG 10



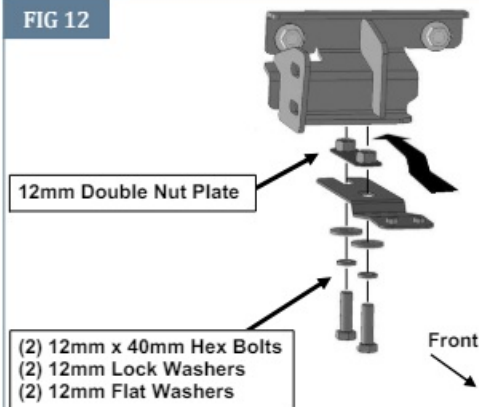
(Fig 10) loosen or remove the large hex nuts (arrow) attaching the back of the bumper to the bumper bracket.

FIG 11



(Fig 11) cut a slot from the plastic splash guard to clear the Support Brackets

FIG 12



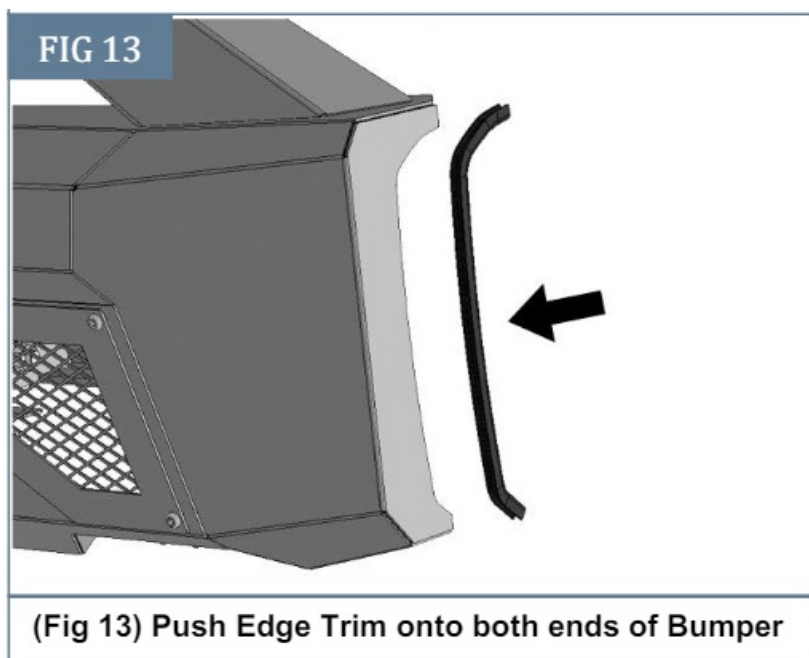
(Fig 12) Attach Support Bracket to Double Nut Plate in frame

#### STEP 4

Repeat the appropriate Step 3 to install the passenger/right Support Bracket.

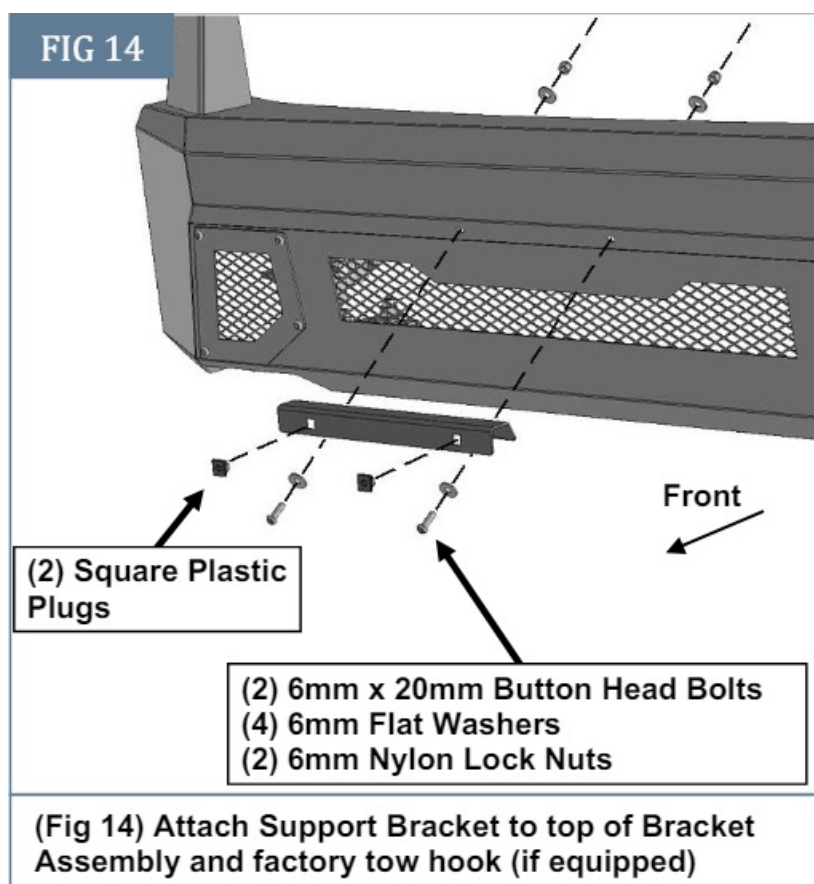
#### STEP 5

Carefully unwrap the Bumper. Attach the included Edge Trim to the sides of the Bumper, (Fig 13).



### STEP 6

On vehicles requiring front license plate, select the License Plate Bracket. Attach the Bracket to the front of the Bumper with the included (2) 6mm x 20mm Button Head Bolts, (4) 6mm Flat Washers and (2) 6mm Nylon Lock Nuts, (Fig 14). Push the included (2) Square Plastic Plugs into the square holes in the Bracket. Reuse the factory hardware to attach the license plate to the Plastic Plugs.



### STEP 7

With assistance, position the mounting tabs on the back of the Bumper up to the inside of the Frame Brackets. Temporarily support Bumper.

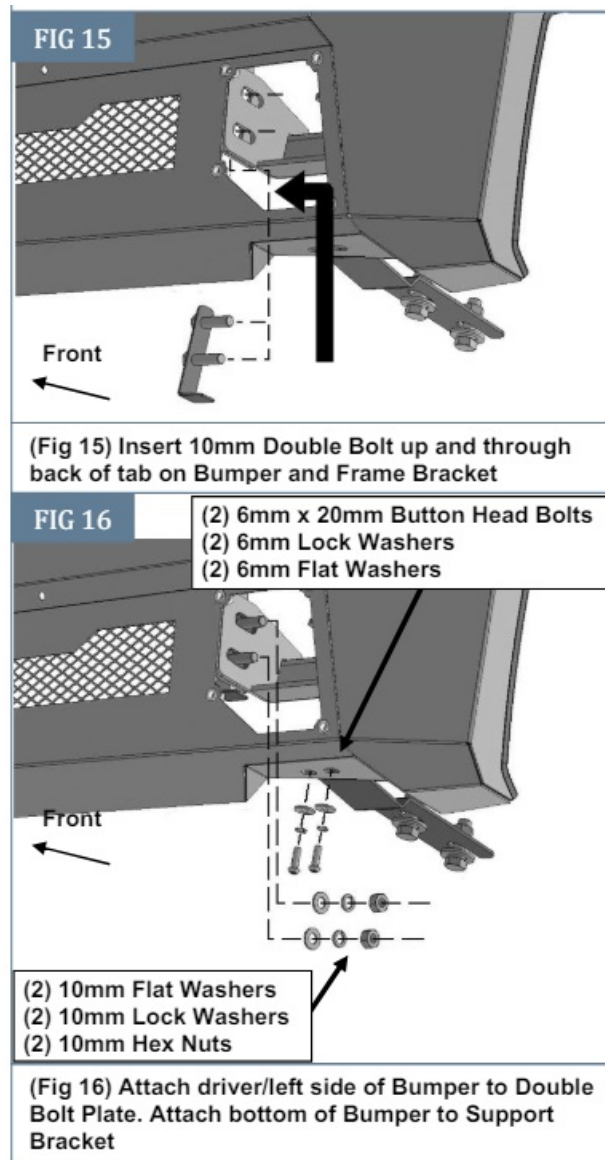
**WARNING:** To avoid possible injury or damage to the vehicle, do not proceed until the bumper is fully and safely

supported.

**WARNING!** Do not crawl under bumper unless it is properly supported on blocks or stands or the bumper may fall.

### STEP 8

Select (1) 10mm Double Bolt Plate. Insert the Bolt Plate through the outer opening in the Bumper, (Fig 15). Guide the Bolt Plate into, up and through the back of the Brackets. Attach the Bumper to the Bolt Plate with (2) 10mm Flat Washers, (2) 10mm Lock Washers and (2) 10mm Hex Nuts, ( Fig 16). Do not tighten hardware. Repeat this Step to attach the passenger/right side of the Bumper to the Bracket.



### STEP 9

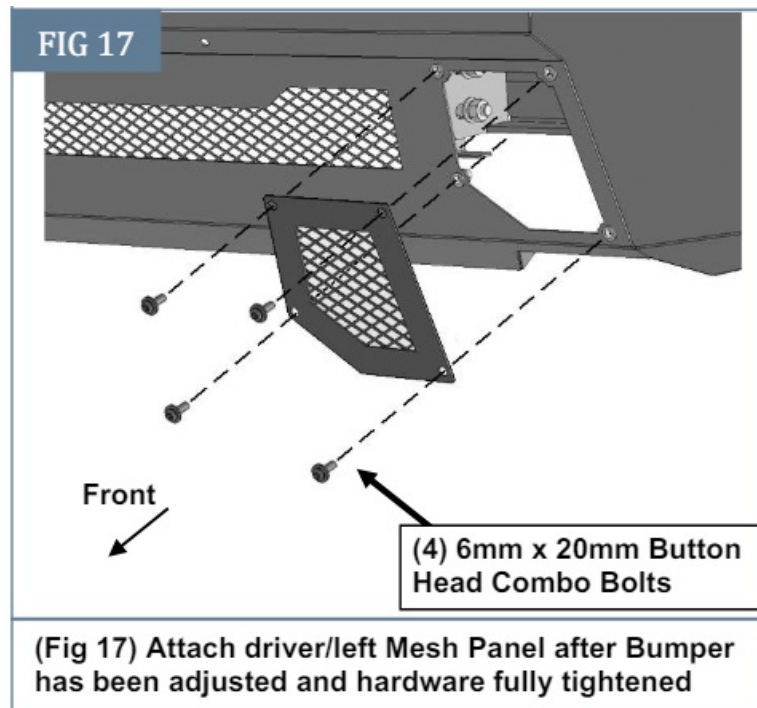
Line up the mounting hole in the driver/left Support Bracket with the holes in the bottom of the Bumper. Attach the Support Bracket to the inside of the Bumper with the included (2) 6mm x 20mm Button Head Bolts, (2) 6mm Lock Washers and (2) 6mm Flat Washers, (Fig 16). Do not fully tighten hardware. Repeat this Step to attach the passenger/right Support Bracket.

### STEP 10

Check the Bumper for level and centered on the vehicle. Adjust the Bumper as necessary and fully tighten all Mounting Bracket hardware. NOTE: If additional left-right adjustment is required, temporarily loosen the Frame Bracket hardware and slide the Brackets left or right as necessary and fully tighten Frame Bracket hardware.

### STEP 11

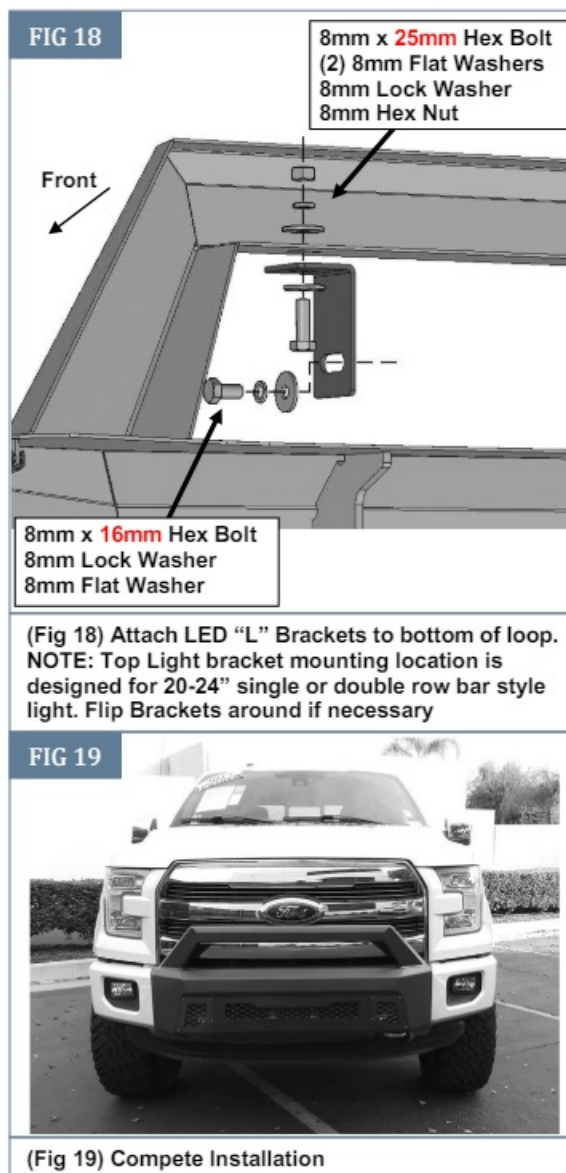
Once hardware has been fully tightened, attach Mesh Fill Panels to Bumper with the included (8) 6mm x 20mm Button Head Combo Bolts, (Fig 17)



## STEP 12

Top mounted LED light installation (optional-light not included).

- a. Select (1) LED "L" LED Bracket. Attach the Bracket to the bottom of the top hoop with (1) 8mm x 25mm Hex Bolt, (2) 8mm Flat Washers, (1) 8mm Lock Washer and (1) 8mm Hex Nut, (Figure 18). Do not tighten hardware at this time.
- b. Repeat previous Step to attach the passenger/right Bracket.
- c. Attach light to Top Brackets with the hardware included with the light or the included (2) 8mm x 16mm Hex Bolts, (2) 8mm Lock Washers and (2) 8mm Flat Washers. Adjust the width of the Brackets to the light.  
IMPORTANT: Top Light Brackets are designed to install most 20" to 24" single and double row bar style LED lights.
- d. "L" Brackets installed to the inside will accommodate a light 21-3/8" to 23-3/16" wide.
- e. "L" Brackets installed to the outside will accommodate a light 24-9/16" to 26-5/16" wide.
- f. Fully tighten top light hardware once adjusted.



### STEP 13

Do periodic inspections to the installation to make sure that all hardware is secure and tight.

[www.ironbisonauto.com](http://www.ironbisonauto.com)

## Documents / Resources

	<p><a href="#">IRONBISON IB-FCS1-06 Front Bumper</a> [pdf] Installation Guide IB-FCS1-06 Front Bumper, IB-FCS1-06, Front Bumper, Bumper</p>
--	---

## References

- [User Manual](#)

**Manuals+**, **Privacy Policy**

This website is an independent publication and is neither affiliated with nor endorsed by any of the trademark owners. The "Bluetooth®" word mark and logos are registered trademarks owned by Bluetooth SIG, Inc. The "Wi-Fi®" word mark and logos are registered trademarks owned by the Wi-Fi Alliance. Any use of these marks on this website does not imply any affiliation with or endorsement.