



IRONBISON IB-CCS1-03 Front Bumper Installation Guide

[Home](#) » [IRONBISON](#) » IRONBISON IB-CCS1-03 Front Bumper Installation Guide 

IRONBISON IB-CCS1-03 Front Bumper Installation Guide



Contents

[1 Torque & Tools](#)

[2 Torque & Tools](#)

[3 Part List](#)

[4 Documents /
Resources](#)

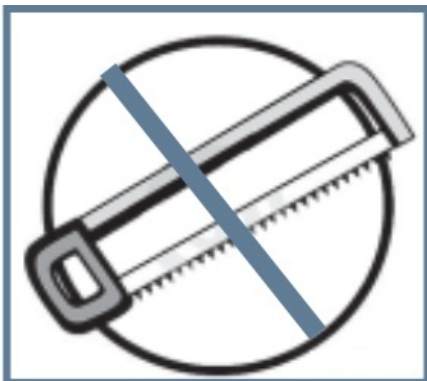
[4.1 References](#)

[5 Related Posts](#)

Torque & Tools





90-180 min



Cutting Not Required

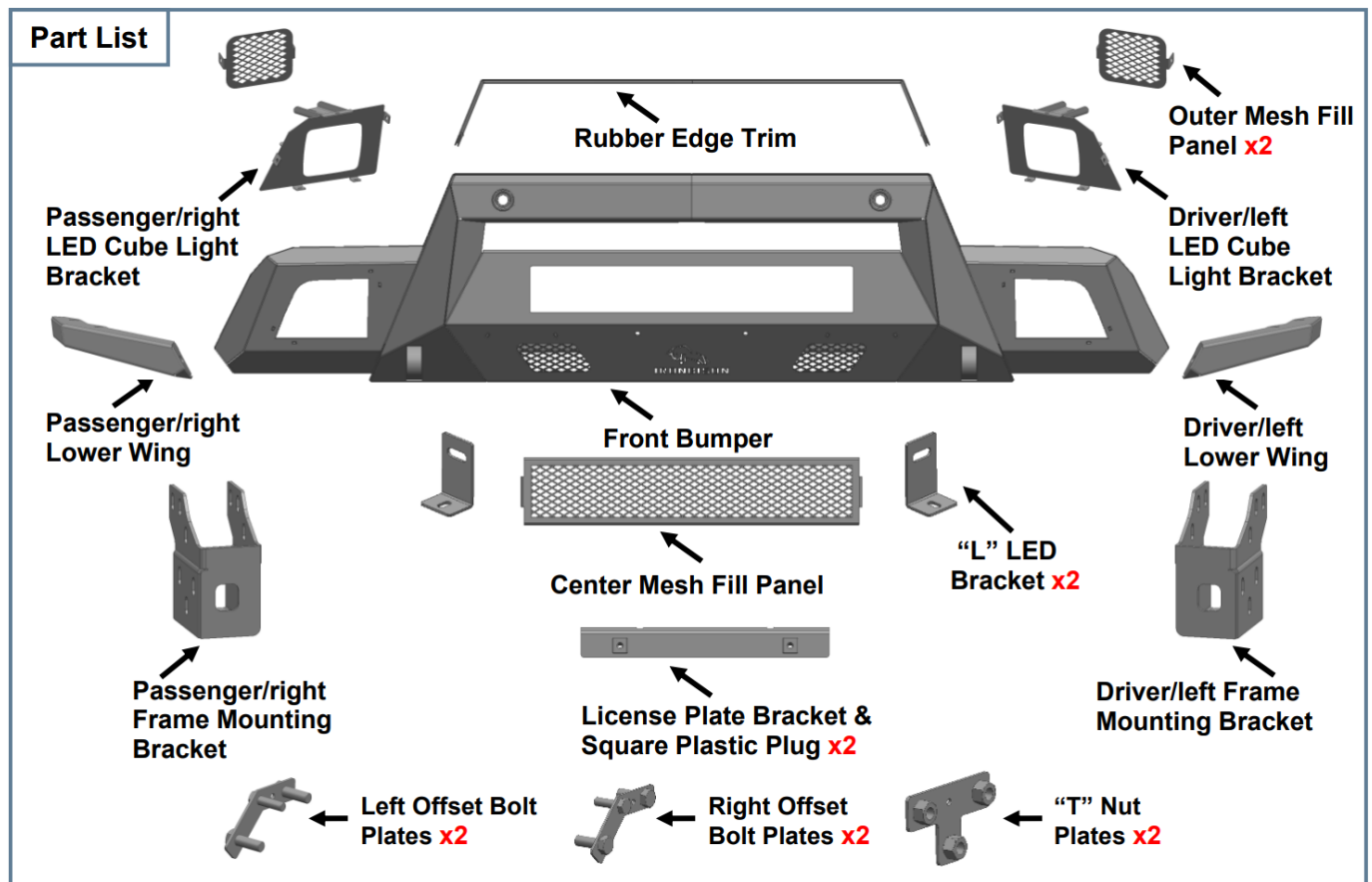


Drilling Not Required

Fastener Size	Tightening Torque (ft-lbs)	Wrench Required		Allen Wrench Required	
• 6mm	• 7-8.5		• 10mm		• 4mm
• 8mm	• 18-20		• 13mm		• 5mm
• 10mm	• 35-40		• 16mm		• 6mm
• 12mm	• 60-70		• 18mm		• 8mm

BEFORE INSTALLATION

REMOVE CONTENTS FROM BOX. VERIFY ALL PARTS ARE PRESENT DEPEND ON THE PARTS LIST. READ INSTRUCTIONS CAREFULLY BEFORE STARTING INSTALLATION. ASSISTANCE IS HIGHLY RECOMMENDED TO AVOID POSSIBLE INJURY OR DAMAGE TO THE VEHICLE.



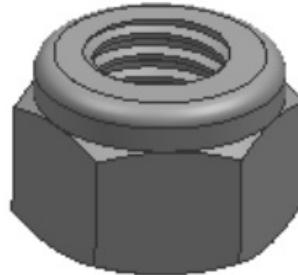
Use to attach the Frame Bracket to the frame

x8



12mm x 37mm x 3mm Flat Washer

x8



12mm Nylon x4 Lock Nut
x4 10mm x 30mm x 2.5mm
Flat Washer

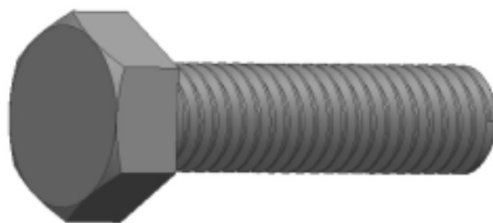
x4



10mm Nylon
Lock Nut

**Use to attach Bumper
to the Frame Bracket:**

x6



12mm x 40mm

Hex Bolt

x6



12mm Lock

Washer

x6



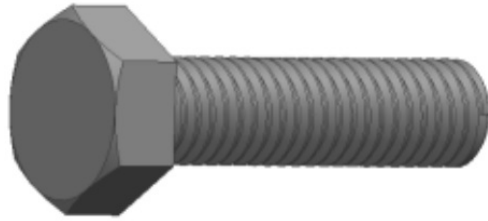
12mm x 37mm x 3mm

Flat Washer

**Use to attach Center
Mesh Fill Panel or LE
D Light Bar to the Bu
mper:**

x4

8mm x 25mm
Hex Bolt



x8

8mm x 24mm x 2mm
Flat Washer



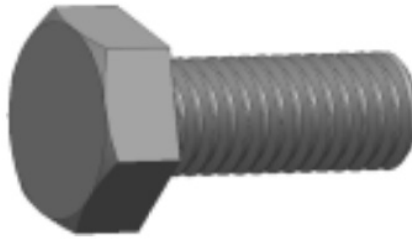
x4

8mm Lock
Washer



Use to attach the Wings to the Bumper:

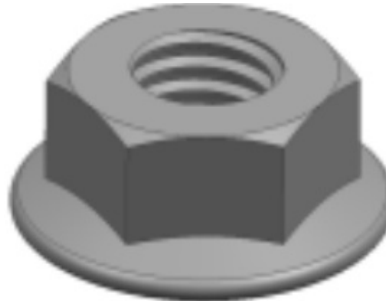
**8mm x 20mm
Hex Bolt**



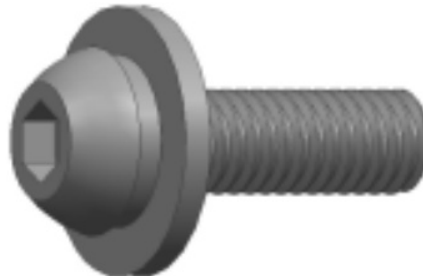
**8mm x 16mm
Flat Washer**



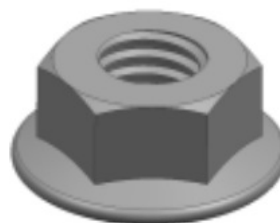
**8mm Flange
Nut**



**6mm x 20mm
Combo Bolt**

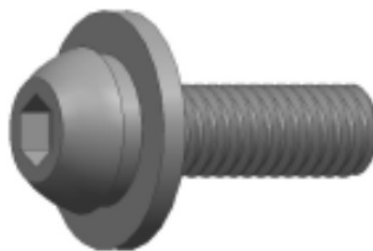


**6mm Flange
Nut**

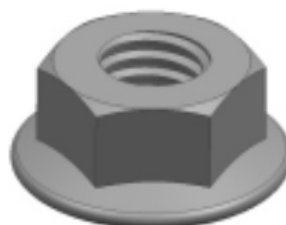


**Use to attach the LED
Cube Light Brackets a
nd Outer Mesh Fill Pa
nels to the Bumper:**

6mm x 20mm
Combo Bolt



6mm Flange
Nut



Use to attach License
Plate Bracket to the B
umper:

x2



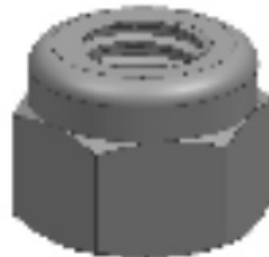
6mm x 20mm
Button Head Bolt

x4



6mm x 18mm x 1.6mm
Flat Washer

x2



6mm Nylon
Lock Nut

x1



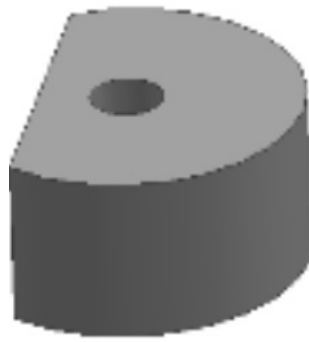
4mm Allen
Wrench

x2



Sensor Cap
x2

Use to attachhjihjuuih
yu8hu8hyu8yu8hy8y8y
8y7gy7y7y76y766 the
Parking Sensors onth
e Bumper



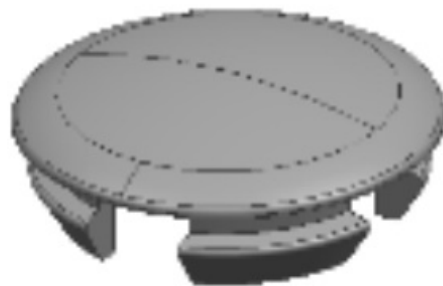
Foam Spacer
x2



Foam Seal



Wire Harness Extension
x2



Sensor Hole Plastic Plug (Use on the
models without Front Sensor)
x6



Sensor Cover (Cover the sensor when it fails)

STEP 1 Open the hood and remove the plastic cover from the top of the grille and radiator, **(Fig 1)**.

FIG 1



Remove cover and screws attaching grille

Models with grille mounted camera, unplug camera. Next, remove the screws attaching the grille to the radiator core support. Once all hardware has been removed, firmly pull the grille straight out from the vehicle to release the grille from the clips, **(Fig 2)**.

FIG 2



Remove cover and screws attaching grille

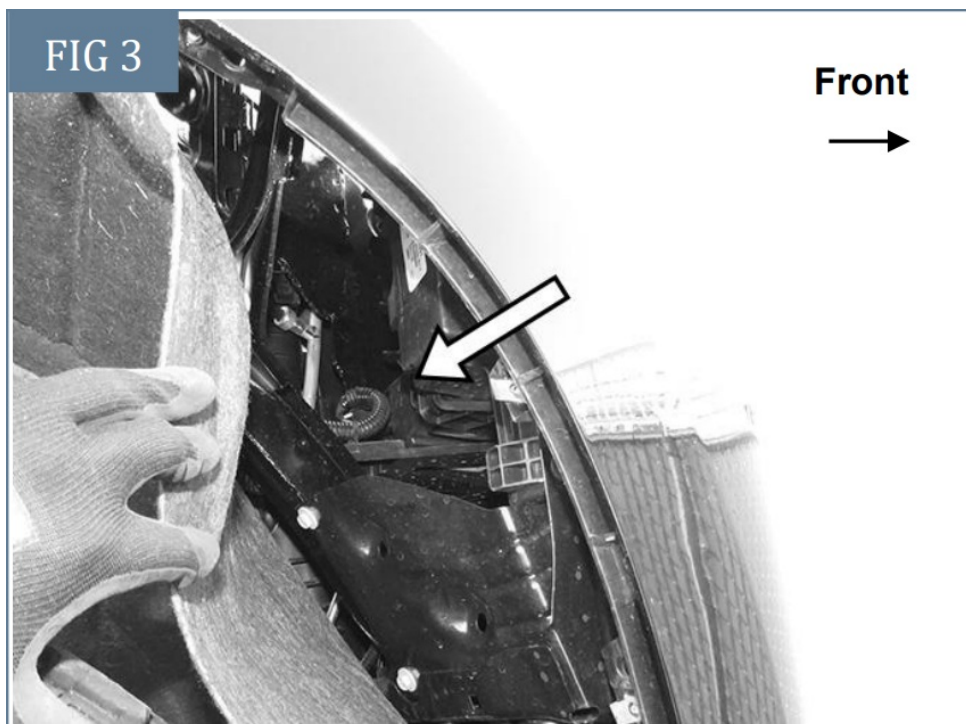
Place grille on a clean, soft surface.

(Fig 1) Remove cover and screws attaching grille

(Fig 2) Firmly pull grille straight out from vehicle

STEP 2

Remove the license plate and bracket. On models with factory fog lights and/or bumper sensors, unplug the wiring harness leading to the bumper, **(Fig 3)**.



Through the passenger/right fender liner, unplug wiring harness leading to front bumper (arrow)

NOTE: Wiring harness connector is located up and behind the passenger/right side of the bumper. Release clips attaching passenger/right fender liner to access plug for harness. Move harness away from bumper.

STEP 3

From behind the driver/left side of the bumper, remove the hardware attaching the outer bumper support to the side of the outer end of the bumper, (Fig 4).

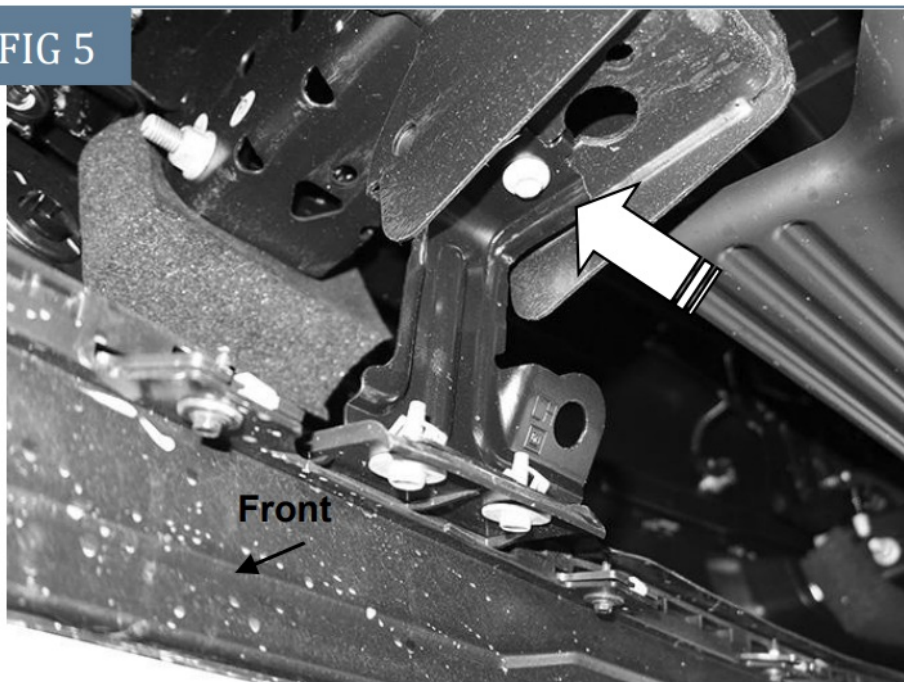


Remove the hardware attaching the outer support bracket to the bumper (arrow)

STEP 4

Locate and remove the hex bolts attaching the bottom of the bumper to the bumper bracket attached to the end of the frame, (Fig 5).

FIG 5



Remove lower bumper supports (arrow)

STEP 5

Repeat Steps 3 & 4 to remove the hardware attaching the bumper to the passenger/right bumper support and lower bumper bracket.

STEP 6

Move back to the top of the bumper. Pull back the end of the rubber cover between the bumper and the radiator to expose the bolts attaching the top of the bumper bracket to the frame bracket, **(Fig 6)**.

FIG 6



Pull back cover to locate top bumper bolts

STEP 7

Place blocks or jack stands under the front bumper to support it during mounting bolt removal. Once the bumper has been safely supported, from above, remove the bumper bolts attaching the bumper assembly to the top of the bumper bracket, **(Fig 6)**.



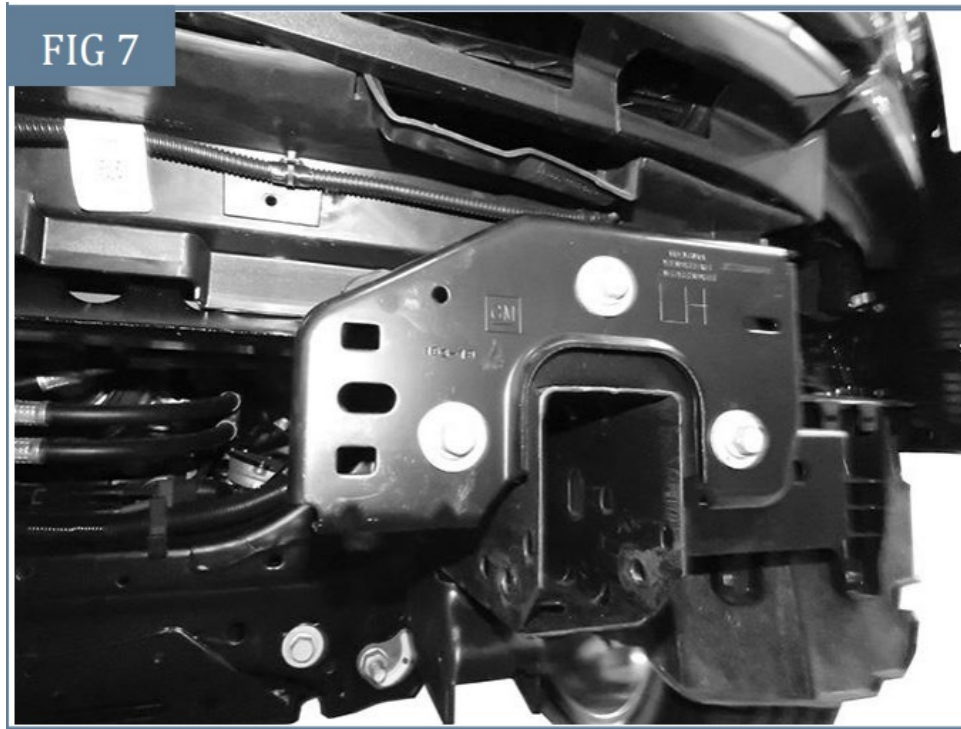
WARNING! Assistance is required to hold the bumper in place during bolt removal to prevent the bumper from falling. Carefully slide the bumper assembly with brackets off of the ends of the frame.



WARNING! Do not crawl under bumper unless it is properly supported on blocks or stands or the bumper may fall.

STEP 8

Remove both tow hooks from the end of the frame if equipped, **(Fig 7)**



Remove tow hooks if equipped

STEP 9

Select the driver/left Frame Bracket, **(Fig 8)**.

FIG 8

Center bolts:
(2) **10mm Flat Washers**
(2) **10mm Nylon Lock Nuts**

Outer bolts:
(4) **12mm Flat Washers**
(4) **12mm Nylon Lock Nuts**

(1) **Right Offset Triple Bolt Plate**
(1) **Left Offset Triple Bolt Plate**

Use (1) Left Offset and (1) Right Offset Triple Bolt Plates to attach the driver/left Frame Bracket to the frame

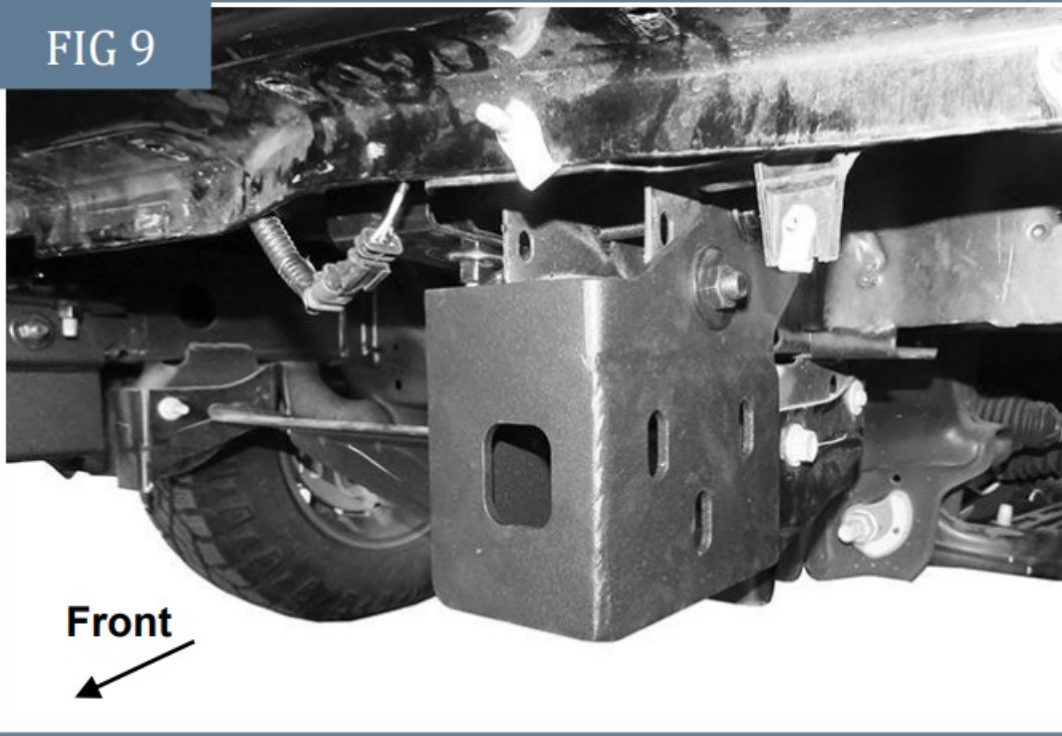
Slide the Bracket over the end of the frame. Insert (1) Left Offset Triple Bolt Plate into the end of the frame and out through the holes in the side of the frame and Mounting Bracket.

NOTE: Each Mounting Bracket will require (1) Left Offset and (1) Right Offset Bolt Plate for installation.

STEP 10

Attach the Bracket to the Left Offset Bolt Plate with the included (2) 12mm Flat Washers, (2) 12mm Nylon Lock Nuts, (1) 10mm Flat Washer and (1) 10mm Nylon Lock Nut, (**Fig 8**). Repeat to install (1) Right Offset Bolt Plate in the remaining holes in the other side of the Frame Bracket, (**Fig 9**).

FIG 9



Driver/left Frame Bracket installed

(Fig 8) Use (1) Left Offset and (1) Right Offset Triple Bolt Plates to attach the driver/left Frame Bracket to the frame

(Fig 9) Driver/left Frame Bracket installed

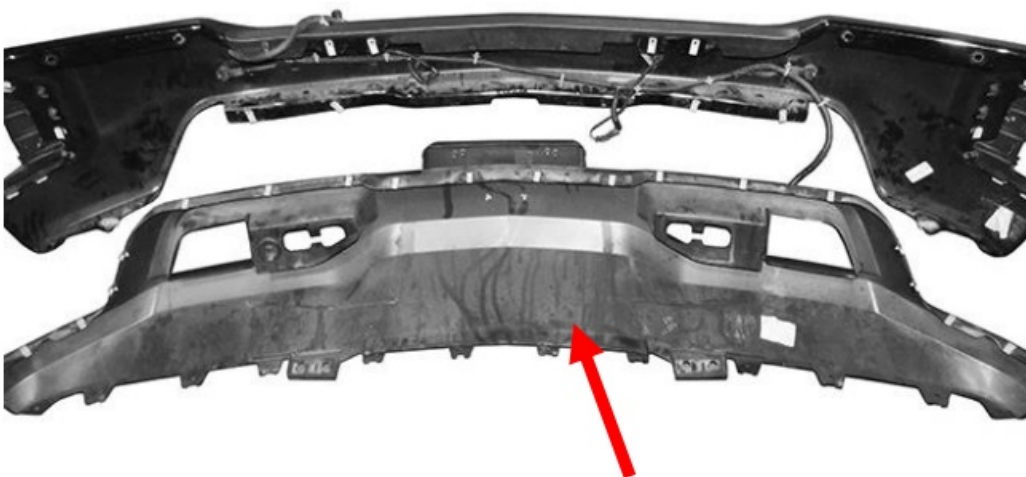
STEP 11

Repeat Steps 9 & 10 to attach the passenger/right Frame Mounting Bracket.

STEP 12

Remove the air dam. Disassemble the factory bumper to remove the lower bumper fill panel, (Fig 10).

FIG 10



Disassemble front bumper assembly to remove lower bumper insert (arrow)

NOTE: Air dam and fill panel will not be reinstalled.

STEP 13

Determine if bumper is equipped with front parking sensors.

Models without sensors:

- a. Push the included (2) Sensor Hole Plastic Plugs into the holes for sensors, **(Fig 11)**. Skip to Step 14. Models with parking sensors.
- a. Unplug and remove the (2) center sensors from the factory bumper.
- b. Select (1) sensor. Remove the silicone seal from the end of the sensor. Slide the included larger Foam Seal over front of sensor, **(Fig 12)**.
- c. Insert sensor with Seal into sensor mount on the hoop on the Bumper, **(Fig 13)**.
- d. Place Foam Spacer onto the end of sensor. Push Sensor Cap and snap onto the sensor mount, **(Fig 13)**.

Models without sensors, insert Plastic Plugs into sensor mounts on Bumper Hoop

(Fig 12) Remove original silicone seal from sensor. Slide included Foam Seal over end of sensor

(Fig 13) Push Sensor Cap into mounting sleeve

STEP 14

Reassemble the factory bumper. On models equipped with sensors, select (1) Wire Harness Extension. Push the Harness Extension through the sensor mount hole in the center of the factory bumper and plug into the inner factory harness. Repeat to insert the remaining Harness Extension.

STEP 15

Determine if factory fog lights, (if equipped), LED Cube lights, (not included), or if no lights will be installed with the Bumper.

Models equipped with and reusing factory fog lights:

- a. Leave fog lights attached to plastic mount son back of factory bumper, (Fig 14).
- b. Reinstall the factory bumper. Cube style LED light installation (not included):
 - a. Remove factory fog lights, (if equipped), from mounts on back of factory bumper, **(Fig 15)**.
 - b. Select the driver/left LED Cube Light Bracket, (Fig 16). Attach the Bracket to the back of the Bumper with the included (5) 6mm x 20mm Combo Bolts and (5) 6mm Flange Nuts.
 - c. Attach Cube Light (Not Included) to tab on top of Mounting Bracket.
 - d. Repeat previous Steps to install the passenger/right cube light Bracket and light.
 - e. **NOTE:** If lights will not be installed, attach the included (2) Mesh Fill Panels to the Cube Light Brackets with (4) 6mm x 20mm Combo Bolts and (4) 6mm Flange Nuts, **(Fig 17)**.

STEP 16

Determine if a center 20" LED light bar, (not included), or Mesh Fill Panel will be installed. Center 20" LED light bar installation (light not included).

- a. Select the (2) "L" LED Brackets, (Fig 18). Attach the Brackets to the (2) mounting tabs on the back of the bumper with the included (2) 8mm x 25mm Hex Bolts, (4) 8mm x 24mm Flat Washers, (2) 8mm Lock Washers and (2) 8mm Hex Nuts. Leave loose at this time.
- b. Attach the LED light to the "L" LED Brackets with the hardware included with the light or the included (2) 8mm x 16mm Hex Bolts, (2) 8mm Lock Washers and (2) 8mm x 24mm Flat Washers, (Fig 18). Do not fully tighten hardware at this time.
- c. Follow light manufacturer's instructions to properly wire the light.

Center Mesh Fill Panel Installation (do not install Fill Panel with light).

- a. Repeat the previous Step to install the (2) "L" LED Brackets.
- b. Attach the Center Mesh Fill Panel to the "L" LED Brackets with the included (2) 8mm x 25mm Hex Bolts, (4) 8mm x 24mm Flat Washers, (2) 8mm Lock Washers and (2) 8mm Hex Nuts, **(Fig 19)**.
- c. Push Fill Panel up against the back of the Bumper and fully tighten hardware.

(Fig 18) Attach "L" LED Brackets if installing LED center light (not included) or Center Mesh Fill Panel.

Attach License Plate Bracket to BumperSTEP 18

If front license plate is required, attach the License Plate Bracket to the holes in the Bumper with the included (2) 6mm x 20mm Button Head Screws, (4) 6mm Flat Washers and (2) 6mm Nylon Lock Nuts. Insert (2) Square Plastic Plugs into the square holes in the Bracket, (Fig 21). Reuse the factory screws to attach the license plate to the Square Plastic Plugs.

STEP 19

Reinstall the factory bumper. Plug factory harness into main harness on vehicle.

STEP 20

Reinstall the plastic grille, camera if equipped and cover removed in Step 1, **(Fig1)**.

STEP 21

Place the Bumper face down in front of the vehicle. Models with sensors, plug the Wire Harness Extensions into the (2) sensors in the Bumper, **(Fig 22)**.

(Fig 22) Models with sensors, plug Wire Harness Extensions (see Step 14) on factory bumper into the sensors installed on the Bumper.

STEP 22

With assistance, position the Bumper Assembly up to the outside of the end of the frame. Temporarily support the weight of the Bumper.

WARNING: To avoid possible injury or damage to the vehicle, do not proceed until the Bumper is fully and safely supported.

WARNING! Do not crawl under bumper unless it is properly supported on blocks or stands or the bumper may fall.

STEP 23

Line up the (3) slots in the driver/left side mounting plate on the back of the Bumper with the Frame Bracket. Insert (1) "T" Nut Plate into the back of the Frame Bracket, **(Fig 23)**. Attach the Bumper to the Frame Bracket and "T" Nut Plate with the included (3) 12mm Hex Bolts, (3) 12mm Lock Washers and (3) 12mm Flat Washers, **(Fig 24)**. Repeat to attach the passenger/right side.

Insert "T" Nut Plates into back of Frame Brackets. Attach Bumper to outside of Frame Brackets and to Nut Plates.

(Fig 24) Driver/left side of Bumper attached to Frame Bracket (Note cube light installation)

STEP 24

Level and adjust the Bumper and fully tighten all hardware.

STEP 25

Select the driver/left Lower Wing. Attach the Wing to the end of the Bumper with (1) 8mm x 20mm Hex Bolt, (1) 8mm x 16mm Small Flat Washer and (1) 8mm Flange Nut, **(Figs 25 & 26)**. Attach the top of the Wing to the bottom of the factory bumper with the included (2) 6mm Button Head Combo Bolts and (2) 6mm Flange Nuts, **(Fig 26)**. Repeat this Step to attach the passenger/right Lower Wing to the Bumper.

(Fig 25) Attach driver/left Lower Bumper “Wing” to end of Bumper and bottom of factory bumper (arrows)

(Fig 26) Attach driver/left Lower Bumper “Wing” to end of Bumper and bottom of factory bumper. Installation illustrated from behind bumper

(Fig 27) Complete installation (20” Double Row Light Bar and two LED Cube Lights are not included)

STEP 26

Do periodic inspections to the installation to make sure that all hardware is secure and tight.

IRONBISON IB-CCS1-03 Front Bumper Installation Guide

Torque & Tools

Fastener Size	Tightening Torque (ft-lbs)	Wrench Required		Allen Wrench Required	
• 6mm	• 7-8.5		• 10mm		• 4mm
• 8mm	• 18-20		• 13mm		• 5mm
• 10mm	• 35-40		• 16mm		• 6mm
• 12mm	• 60-70		• 18mm		• 8mm
BEFORE INSTALLATION					
REMOVE CONTENTS FROM BOX. VERIFY ALL PARTS ARE PRESENT DEPEND ON THE PARTS LIST. READ INSTRUCTIONS CAREFULLY BEFORE STARTING INSTALLATION. ASSISTANCE IS HIGHLY RECOMMENDED TO AVOID POSSIBLE INJURY OR DAMAGE TO THE VEHICLE.					

Part List

Use to attach the Frame Bracket to the frame	x8 nut	x8 10mm x 30mm x 2.5mm Flat Washer	x4 12mm x 37mm x 3mm Nylon Flat Washer Lock Nut	x4 12mm x 37mm x 3mm Nylon Flat Washer Lock Nut	12mm Nylon Lock Nut
Use to attach Bumper to the Frame Bracket:	x6 12mm x 37mm x 3mm Hex Bolt	x6 12mm x 40mm Washer	x6 12mm x 40mm Washer	12mm Lock Flat Washer	12mm
Use to attach Center Mesh Fill Panel or LED Light Bar to the Bumper:	x4 8mm Lock Washer	x8 8mm Lock Washer	x4 8mm Hex Nut	x4 8mm x 16mm Hex Bolt Hex Bolt	x2 8mm x 24mm x 2mm Flat Washer
Use to attach the Wings to the Bumper:	x2 8mm Flange Nut	x2 6mm x 20mm Combo Bolt	x2 6mm x 20mm Combo Bolt	x4 48mm x 20mm 6mm Flange Hex Bolt Nut	8mm x 16mm Flat Washer
Use to attach the LED Cube Light Brackets and Outer Mesh Fill Panels to the Bumper:	x14	x14 6mm x 20mm	6mm Flange Combo Bolt	Nut	
Use to attach License Plate Bracket to the Bumper:	x2 x 1.6mm Wrench	x4 6mm Nylon Flat Washer	x2 16mm x 20mm 4mm Allen Button Head Bolt Lock Nut	6mm x 18mm	
Use to attach the Parking Sensors on the Bumper	x2 Sensor Cap	x2 Wire Harness Extension	x2 Sensor Cover (Cover the models without Front Sensor) sensor when it fails)	Foam Spacer x6 Sensor Hole Plastic Plug (Foam S

STEP 1

Open the hood and remove the plastic cover from the top of the grille and radiator, **(Fig 1)**. Models with grille mounted camera, unplug camera. Next, remove the screws attaching the grille to the radiator core support. Once all hardware has been removed, firmly pull the grille straight out from the vehicle to release the grille from the clips, **(Fig 2)**. Place grille on a clean, soft surface.

(Fig 1) Remove cover and screws attaching grille

(Fig 2) Firmly pull grille straight out from vehicle

STEP 2

Remove the license plate and bracket. On models with factory fog lights and/or bumper sensors, unplug the wiring harness leading to the bumper, **(Fig 3)**.

NOTE: Wiring harness connector is located up and behind the passenger/right side of the bumper. Release clips attaching passenger/right fender liner to access plug for harness. Move harness away from bumper.

(Fig 3) Through the passenger/right fender liner, unplug wiring harness leading to front bumper (arrow)

STEP 3

From behind the driver/left side of the bumper, remove the hardware attaching the outer bumper support to the side of the outer end of the bumper, **(Fig 4)**.

(Fig 4) Remove the hardware attaching the outer support bracket to the bumper (arrow)

STEP 4

Locate and remove the hex bolts attaching the bottom of the bumper to the bumper bracket attached to the end of the frame, **(Fig 5)**.

(Fig 5) Remove lower bumper supports (arrow)

STEP 5

Repeat Steps 3 & 4 to remove the hardware attaching the bumper to the passenger/right bumper support and

lower bumper bracket.

STEP 6

Move back to the top of the bumper. Pull back the end of the rubber cover between the bumper and the radiator to expose the bolts attaching the top of the bumper bracket to the frame bracket, **(Fig 6)**.

(Fig 6) Pull back cover to locate top bumper bolts

STEP 7

Place blocks or jack stands under the front bumper to support it during mounting bolt removal. Once the bumper has been safely supported, from above, remove the bumper bolts attaching the bumper assembly to the top of the bumper bracket, **(Fig 6)**.

WARNING! Assistance is required to hold the bumper in place during bolt removal to prevent the bumper from falling. Carefully slide the bumper assembly with brackets off of the ends of the frame.

WARNING! Do not crawl under bumper unless it is properly supported on blocks or stands or the bumper may fall.

STEP 8

Remove both tow hooks from the end of the frame if equipped, **(Fig 7)**

(Fig 7) Remove tow hooks if equipped

STEP 9

Select the driver/left Frame Bracket, **(Fig 8)**. Slide the Bracket over the end of the frame. Insert (1) Left Offset Triple Bolt Plate into the end of the frame and out through the holes in the side of the frame and Mounting Bracket.

NOTE: Each Mounting Bracket will require (1) Left Offset and (1) Right Offset Bolt Plate for installation.

STEP 10

Attach the Bracket to the Left Offset Bolt Plate with the included (2) 12mm Flat Washers, (2) 12mm Nylon Lock Nuts, (1) 10mm Flat Washer and (1) 10mm Nylon Lock Nut, **(Fig 8)**. Repeat to install (1) Right Offset Bolt Plate in the remaining holes in the other side of the Frame Bracket, **(Fig 9)**.

(Fig 8) Use (1) Left Offset and (1) Right Offset Triple Bolt Plates to attach the driver/left Frame Bracket to the frame

(Fig 9) Driver/left Frame Bracket installed

STEP 11

Repeat Steps 9 & 10 to attach the passenger/right Frame Mounting Bracket.

STEP 12

Remove the air dam. Disassemble the factory bumper to remove the lower bumper fill panel, **(Fig 10)**.

NOTE: Air dam and fill panel will not be reinstalled.

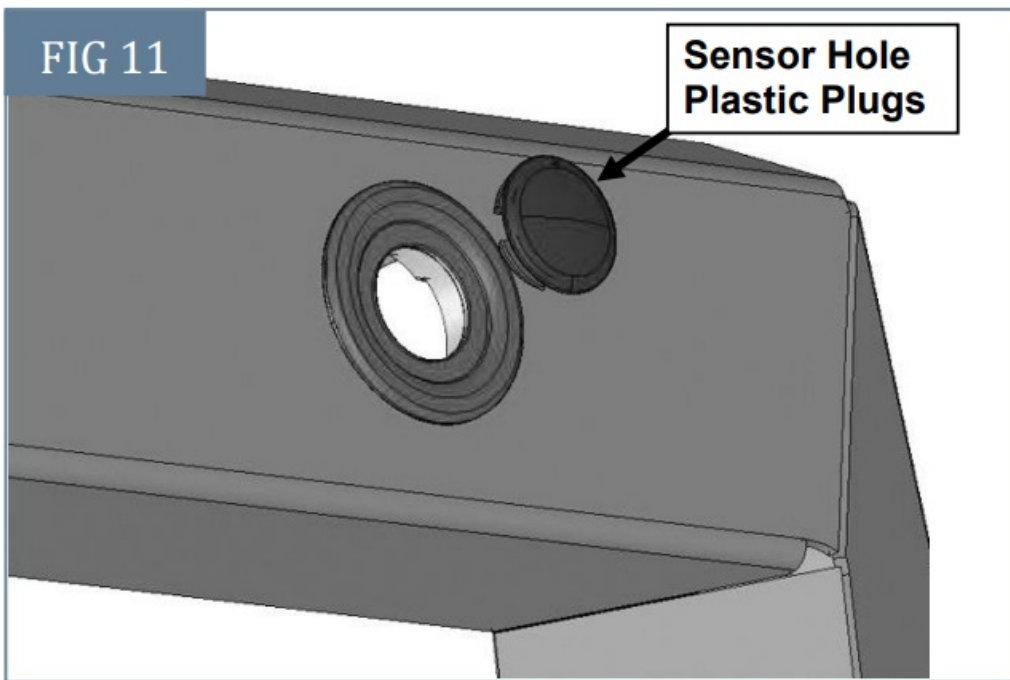
STEP 13

Determine if bumper is equipped with front parking sensors.

Models without sensors:

a. Push the included (2) Sensor Hole Plastic Plugs into the holes for sensors, **(Fig 11)**.

FIG 11



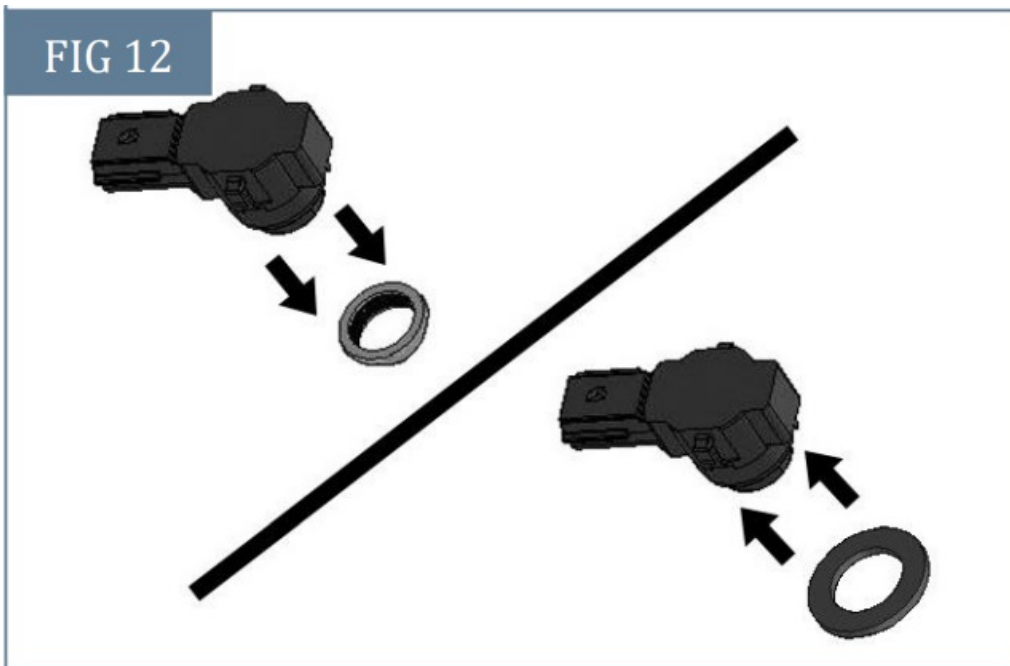
**Sensor Hole
Plastic Plugs**

Disassemble front bumper assembly to remove lower bumper insert (arrow)

Skip to Step 14. Models with parking sensors.

- a. Unplug and remove the (2) center sensors from the factory bumper.
- b. Select (1) sensor. Remove the silicone seal from the end of the sensor. Slide the included larger Foam Seal over front of sensor, (**Fig 12**).

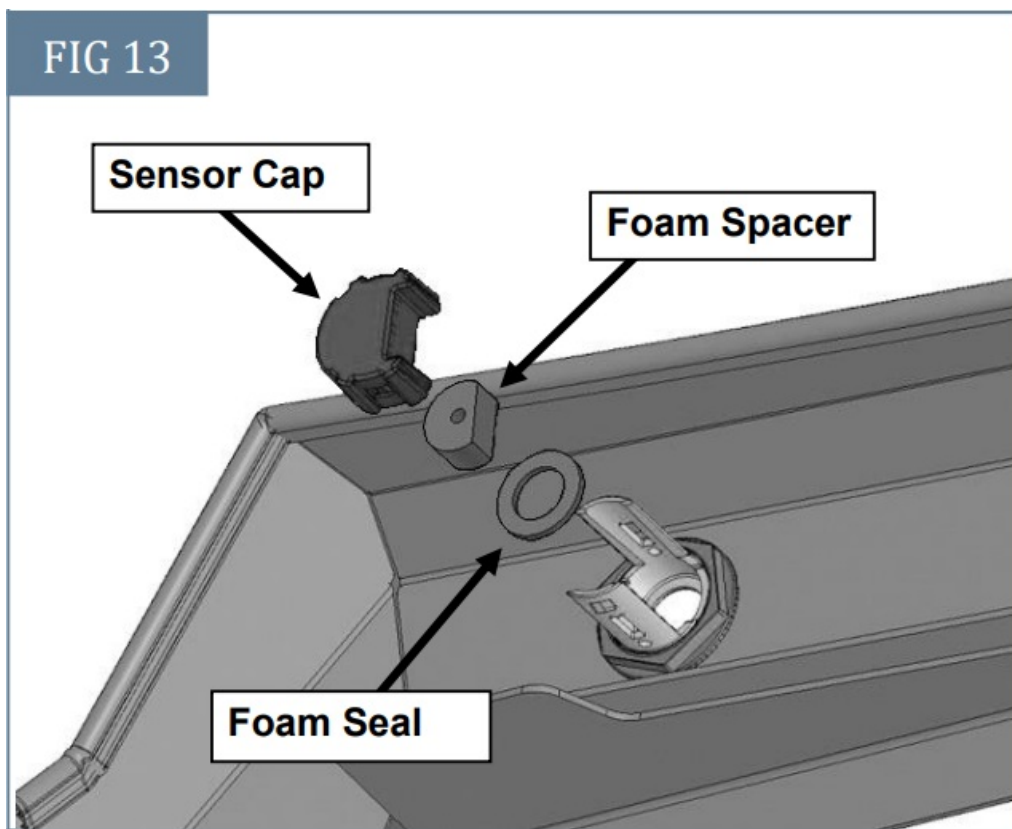
FIG 12



Remove original silicone seal from sensor. Slide included Foam Seal over end of sensor

- c. Insert sensor with Seal into sensor mount on the hoop on the Bumper, (**Fig 13**).
- d. Place Foam Spacer onto the end of sensor. Push Sensor Cap and snap onto the sensor mount, (**Fig 13**)

FIG 13



Push Sensor Cap into mounting sleeve

STEP 14

Reassemble the factory bumper. On models equipped with sensors, select (1) Wire Harness Extension. Push the Harness Extension through the sensor mount hole in the center of the factory bumper and plug into the inner factory harness. Repeat to insert the remaining Harness Extension.

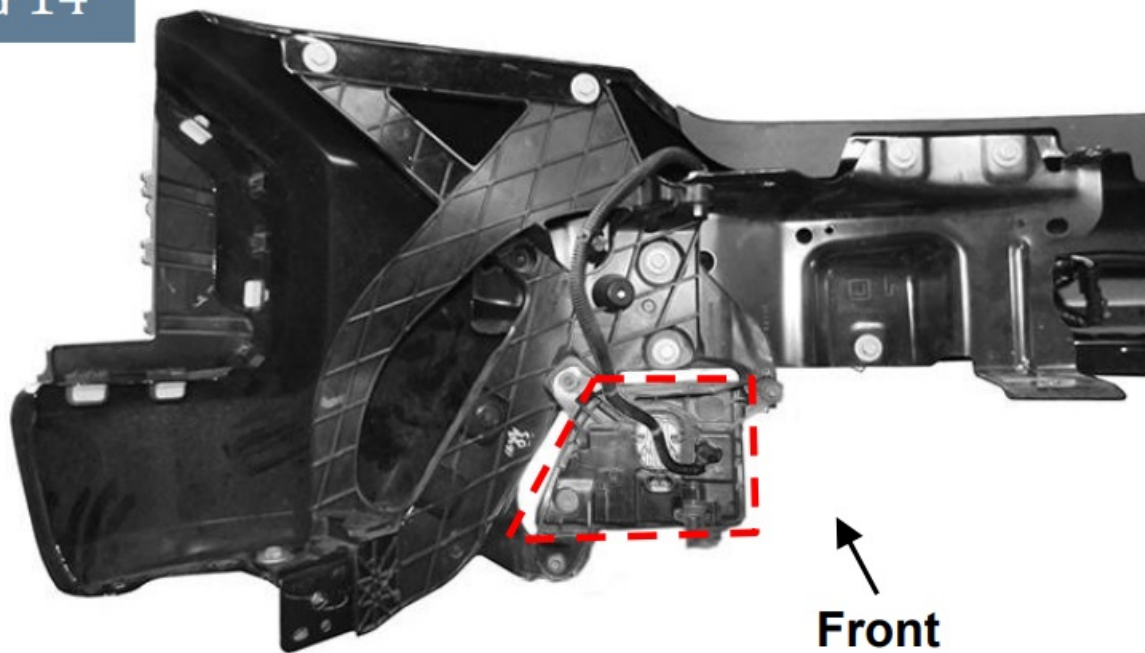
STEP 15

Determine if factory fog lights, (if equipped), LED Cube lights, (not included), or if no lights will be installed with the Bumper.

Models equipped with and reusing factory fog lights:

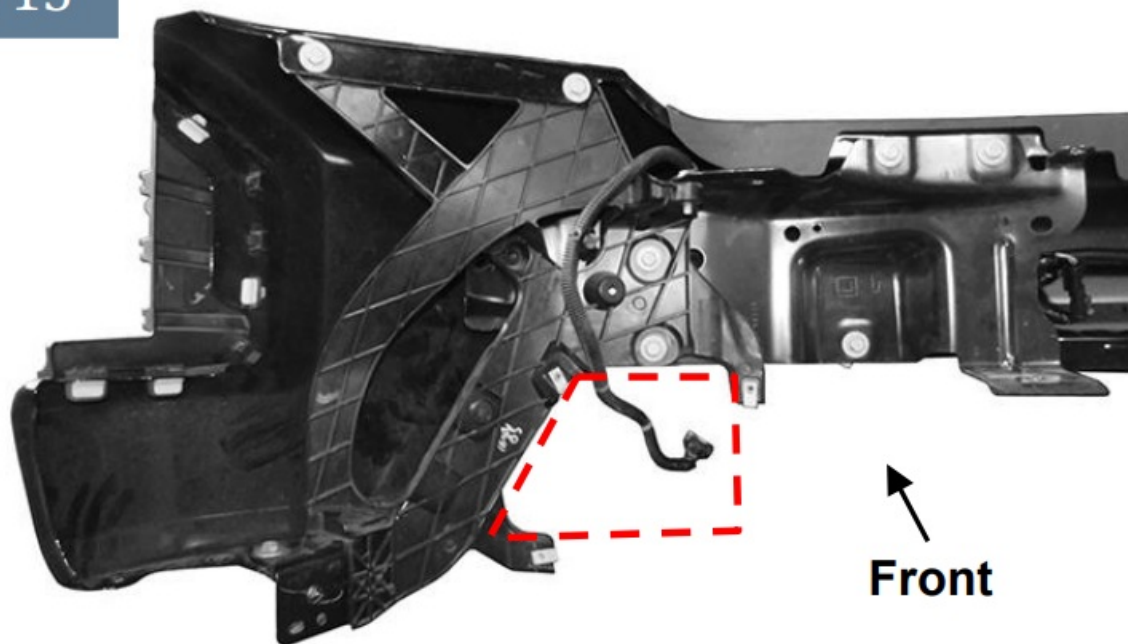
- a. Leave fog lights attached to plastic mount son back of factory bumper, **(Fig 14)**.

FIG 14



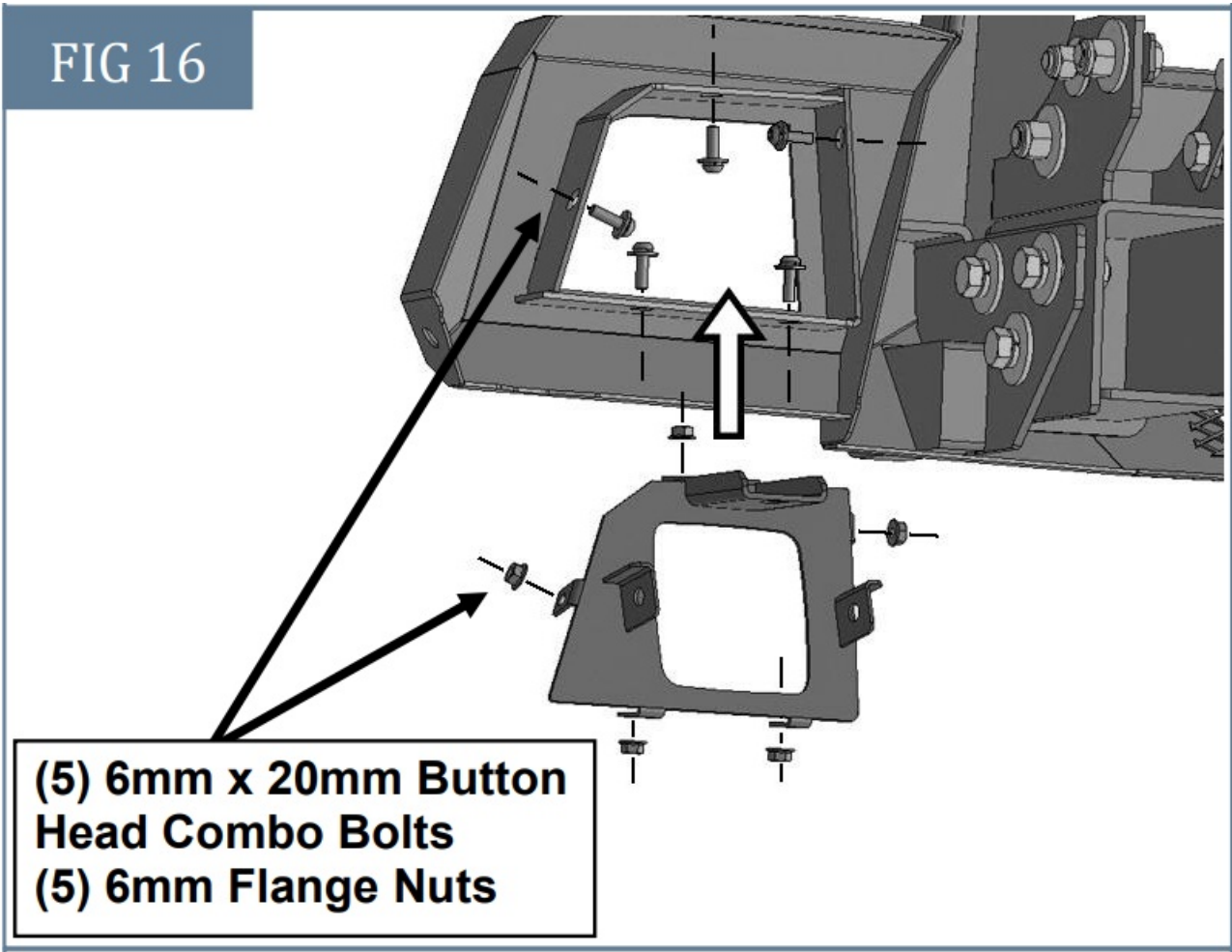
Reassemble bumper without lower bumper insert. Back of driver/left side of model with fog light pictured
b. Reinstall the factory bumper. Cube style LED light installation (not included):
a. Remove factory fog lights, (if equipped), from mounts on back of factory bumper, (Fig 15).

FIG 15



Remove factory fog light if installing LED cube style lights or Mesh Fill Panels
b. Select the driver/left LED Cube Light Bracket, (Fig 16).

FIG 16



Install driver/left LED cube light Bracket

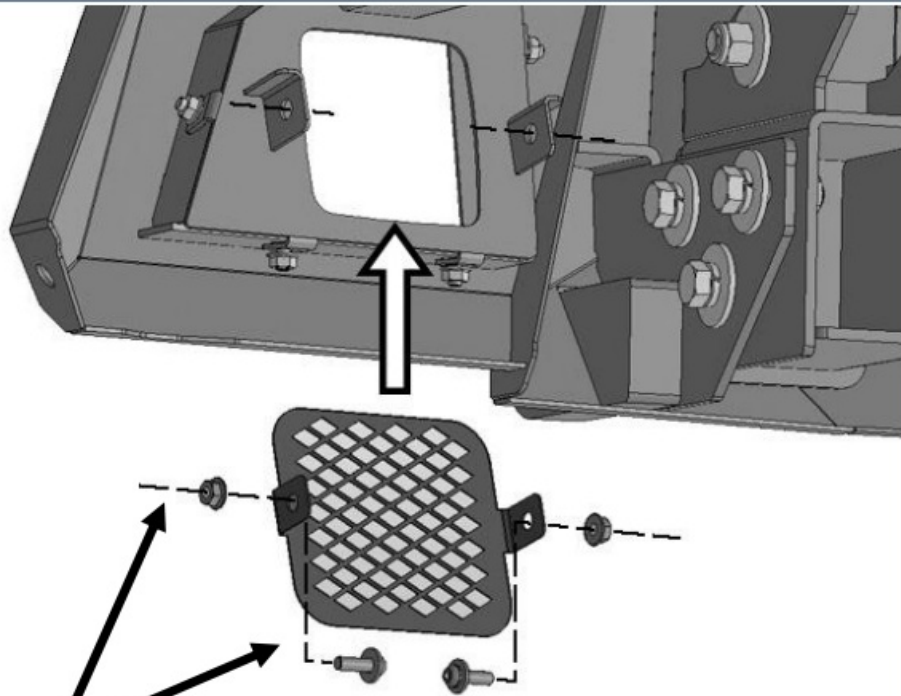
Attach the Bracket to the back of the Bumper with the included (5) 6mm x 20mm Combo Bolts and (5) 6mm Flange Nuts.

c. Attach Cube Light (Not Included) to tab on top of Mounting Bracket.

d. Repeat previous Steps to install the passenger/right cube light Bracket and light.

e. **NOTE:** If lights will not be installed, attach the included (2) Mesh Fill Panels to the Cube Light Brackets with (4) 6mm x 20mm Combo Bolts and (4) 6mm Flange Nuts, (**Fig 17**).

FIG 17



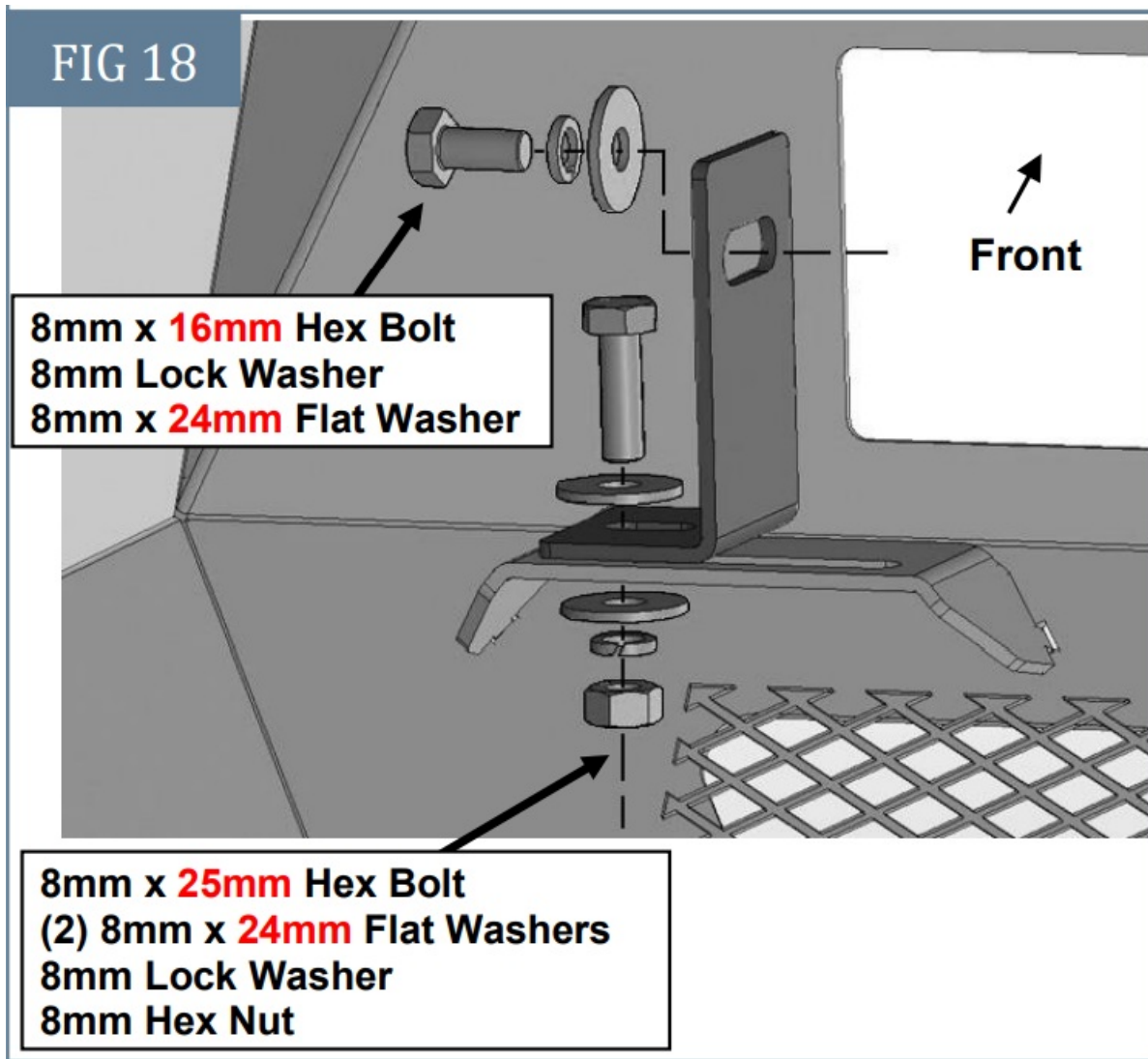
**(2) 6mm x 20mm Button
Head Combo Bolts
(2) 6mm Flange Nuts**

Attach Fill Panel to Light Bracket if no light will be installed

STEP 16

Determine if a center 20" LED light bar, (not included), or Mesh Fill Panel will be installed. Center 20" LED light bar installation (light not included).

- a. Select the (2) "L" LED Brackets, (**Fig 18**).

FIG 18

Attach “L” LED Brackets if installing LED center light (not included) or Center Mesh Fill Panel.

Attach the Brackets to the (2) mounting tabs on the back of the bumper with the included (2) 8mm x 25mm Hex Bolts, (4) 8mm x 24mm Flat Washers, (2) 8mm Lock Washers and (2) 8mm Hex Nuts. Leave loose at this time.

b. Attach the LED light to the “L” LED Brackets with the hardware included with the light or the included (2) 8mm x 16mm Hex Bolts, (2) 8mm Lock Washers and (2) 8mm x 24mm Flat Washers, (**Fig 18**). Do not fully tighten hardware at this time.

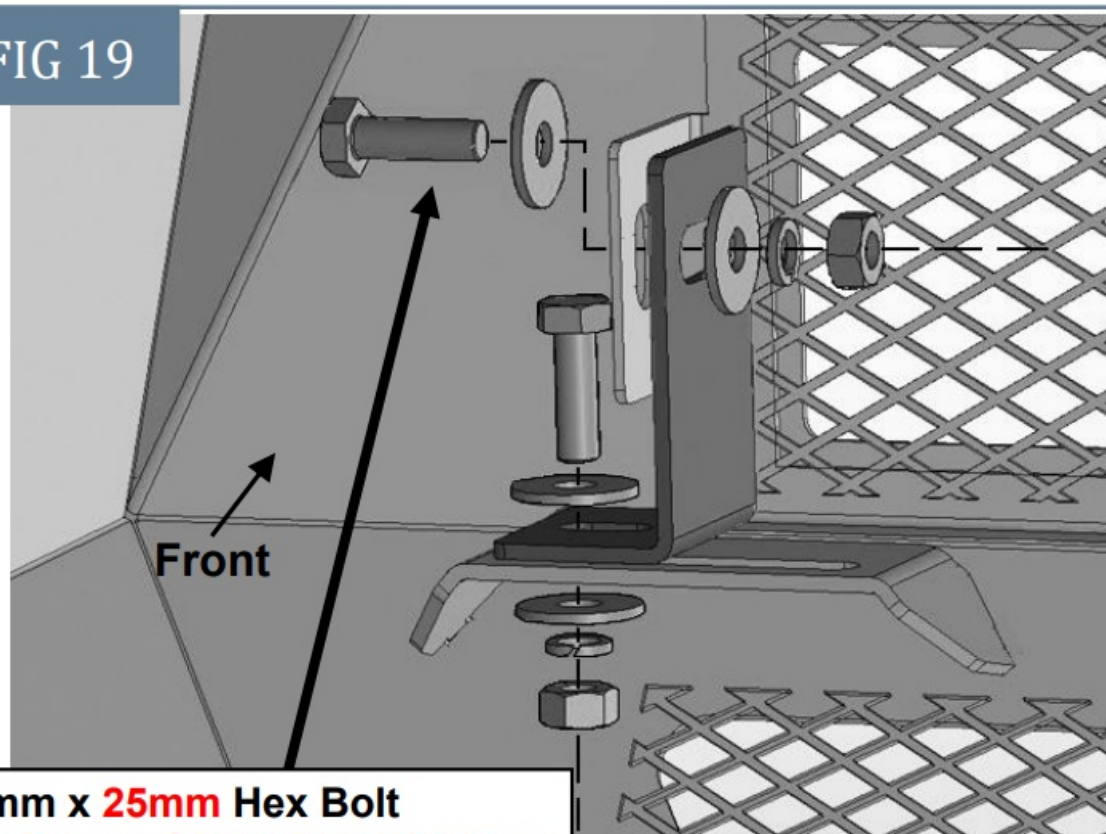
c. Follow light manufacturer’s instructions to properly wire the light.

Center Mesh Fill Panel Installation (do not install Fill Panel with light).

a. Repeat the previous Step to install the (2) “L” LED Brackets.

b. Attach the Center Mesh Fill Panel to the “L” LED Brackets with the included (2) 8mm x 25mm Hex Bolts, (4) 8mm x 24mm Flat Washers, (2) 8mm Lock Washers and (2) 8mm Hex Nuts, (**Fig 19**).

FIG 19



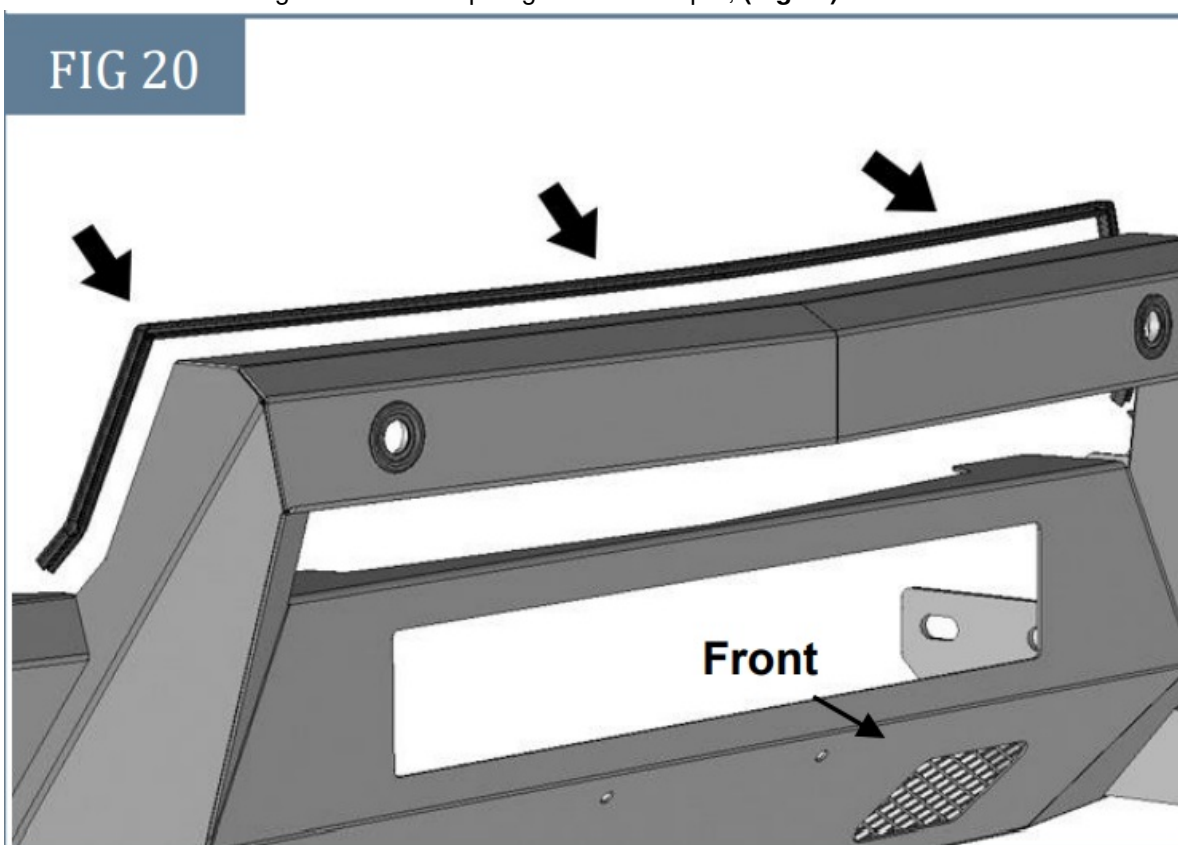
8mm x **25mm** Hex Bolt
(2) 8mm x **24mm** Flat Washers
8mm Lock Washer
8mm Hex Nut

Attach Center Mesh Fill Panel to “L” LED Brackets (Do not install Fill Panel with LED light)
c. Push Fill Panel up against the back of the Bumper and fully tighten hardware.

STEP 17

Attach the included Edge Trim to the top edge of the Bumper, (Fig 20).

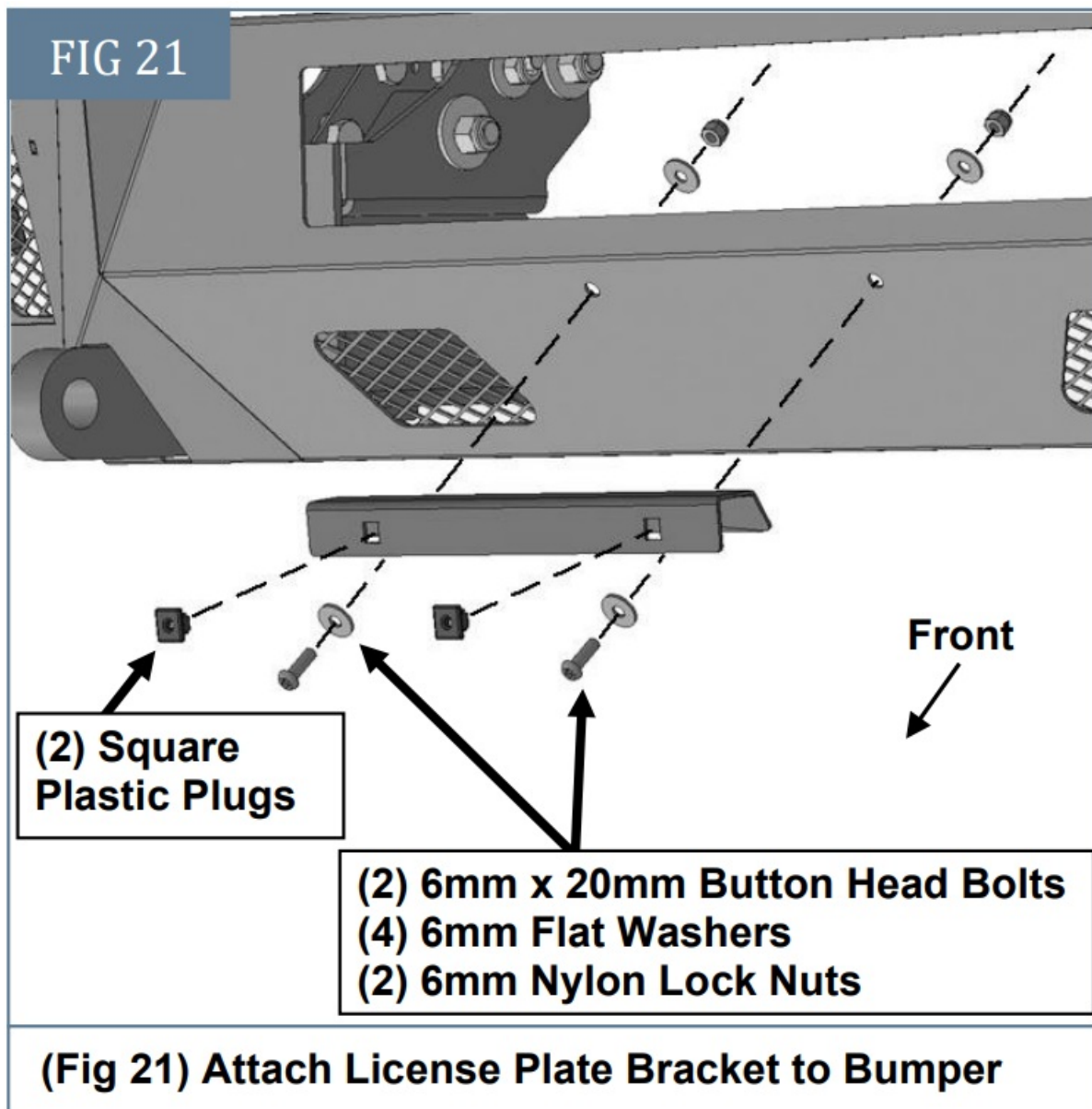
FIG 20



Apply Rubber Trim to edge of Bumper

STEP 18

If front license plate is required, attach the License Plate Bracket to the holes in the Bumper with the included (2) 6mm x 20mm Button Head Screws, (4) 6mm Flat Washers and (2) 6mm Nylon Lock Nuts. Insert (2) Square Plastic Plugs into the square holes in the Bracket, (Fig 21). Reuse the factory screws to attach the license plate to the Square Plastic Plugs.



Attach License Plate Bracket to Bumper

STEP 19

Reinstall the factory bumper. Plug factory harness into main harness on vehicle.

STEP 20

Reinstall the plastic grille, camera if equipped and cover removed in Step 1, (Fig1).

STEP 21

Place the Bumper face down in front of the vehicle. Models with sensors, plug the Wire Harness Extensions into the (2) sensors in the Bumper, (Fig 22).

FIG 22



Models with sensors, plug Wire Harness Extensions (see Step 14) on factory bumper into the sensors installed on the Bumper.

STEP 22

With assistance, position the Bumper Assembly up to the outside of the end of the frame. Temporarily support the weight of the Bumper.



WARNING: To avoid possible injury or damage to the vehicle, do not proceed until the Bumper is fully and safely supported.



WARNING! Do not crawl under bumper unless it is properly supported on blocks or stands or the bumper may fall.

STEP 23

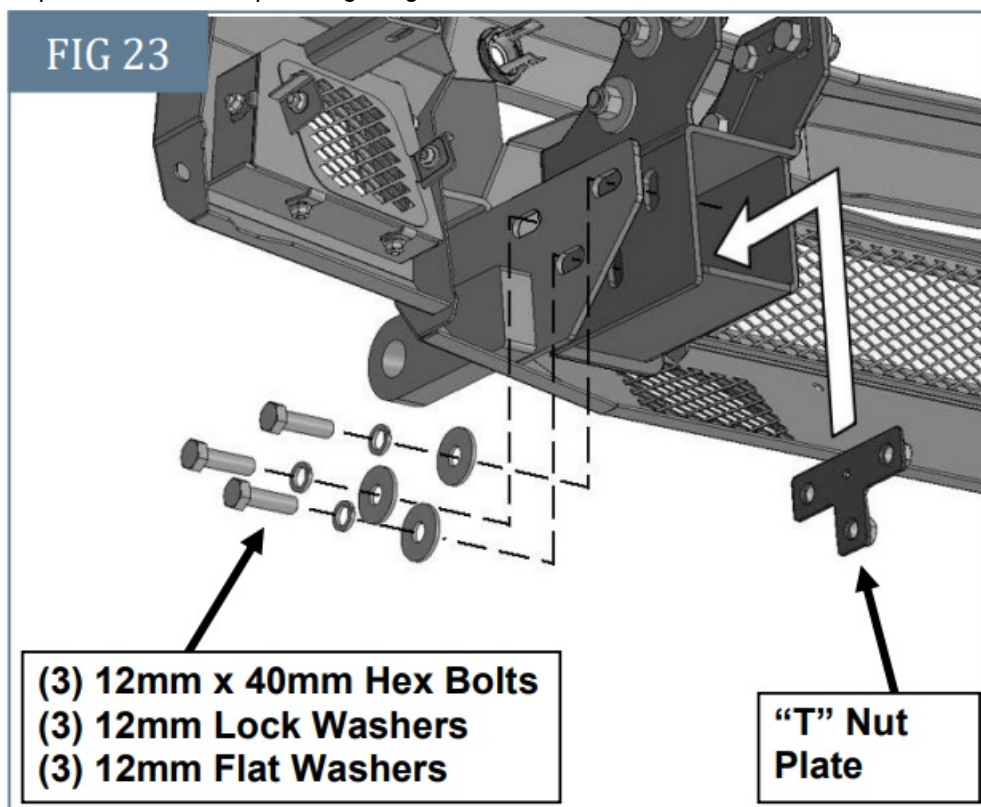
Line up the (3) slots in the driver/left side mounting plate on the back of the Bumper with the Frame Bracket. Insert (1) "T" Nut Plate into the back of the Frame Bracket, (**Fig 23**). Attach the Bumper to the Frame Bracket and "T" Nut Plate with the included (3) 12mm Hex Bolts, (3) 12mm Lock Washers and (3) 12mm Flat Washers, (**Fig 24**).

FIG 24



Driver/left side of Bumper attached to Frame Bracket (Note cube light installation)
Repeat to attach the passenger/right side.

FIG 23



Insert "T" Nut Plates into back of Frame Brackets. Attach Bumper to outside of Frame Brackets and to Nut Plates.

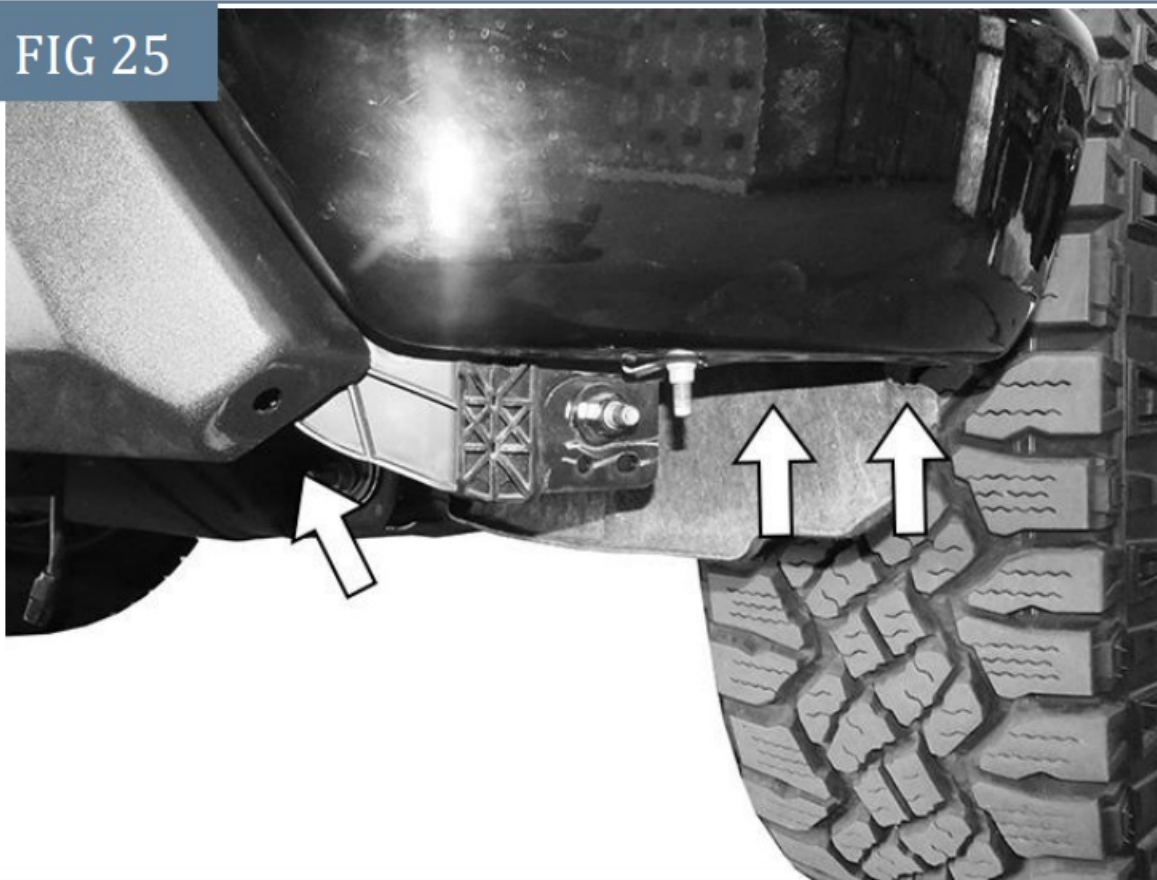
STEP 24

Level and adjust the Bumper and fully tighten all hardware.

STEP 25

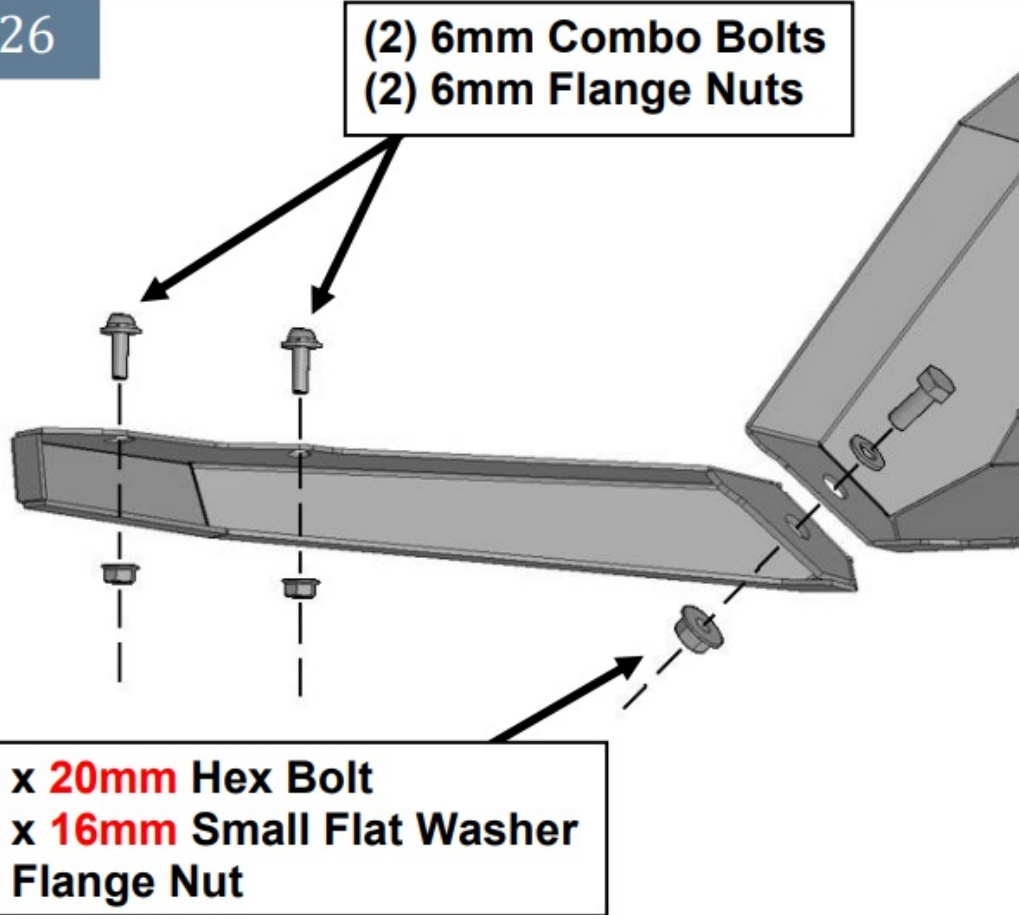
Select the driver/left Lower Wing. Attach the Wing to the end of the Bumper with (1) 8mm x 20mm Hex Bolt, (1) 8mm x 16mm Small Flat Washer and (1) 8mm Flange Nut, (**Figs 25 & 26**). Attach the top of the Wing to the bottom of the factory bumper with the included (2) 6mm Button Head Combo Bolts and (2) 6mm Flange Nuts, (**Fig 26**). Repeat this Step to attach the passenger/right Lower Wing to the Bumper.

FIG 25



(Fig 25) Attach driver/left Lower Bumper “Wing” to end of Bumper and bottom of factory bumper (arrows)

FIG 26



(Fig 26) Attach driver/left Lower Bumper “Wing” to end of Bumper and bottom of factory bumper. Installation illustrated from behind bumper

FIG 27

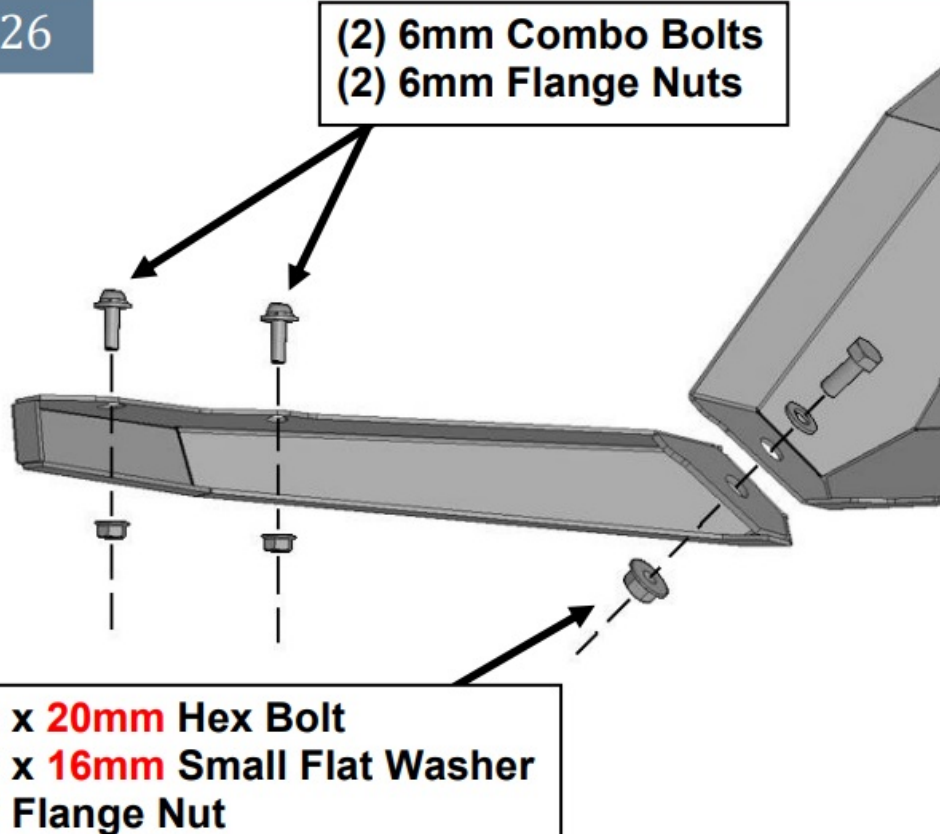


(Fig 27) Complete installation (20” Double Row Light Bar and two LED Cube Lights are not included)

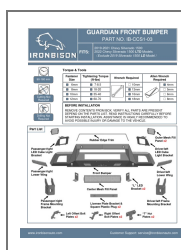
STEP 26

Do periodic inspections to the installation to make sure that all hardware is secure and tight.

FIG 26



Documents / Resources



[IRONBISON IB-CCS1-03 Front Bumper](#) [pdf] Installation Guide
IB-CCS1-03, IB-CCS1-03 Front Bumper, Front Bumper, Bumper

References

-  [IRONBISON](#)
- [User Manual](#)

[Manuals+](#), [Privacy Policy](#)

This website is an independent publication and is neither affiliated with nor endorsed by any of the trademark owners. The "Bluetooth®" word mark and logos are registered trademarks owned by Bluetooth SIG, Inc. The "Wi-Fi®" word mark and logos are registered trademarks owned by the Wi-Fi Alliance. Any use of these marks on this website does not imply any affiliation with or endorsement.