



# IRISBOND Hiru Window Eye Tracking System User Manual

[Home](#) » [IRISBOND](#) » IRISBOND Hiru Window Eye Tracking System User Manual 



**Hiru**

**The first multi-platform eye tracker in the world**



**User Manual | Quick Start Guide: Windows**

## Contents

- [1 User Manual IRISBOND Hiru Eye Tracking System](#)
- [2 How to update Hiru in Windows](#)
- [3 Documents / Resources](#)
  - [3.1 References](#)
- [4 Related Posts](#)

## User Manual IRISBOND Hiru Eye Tracking System

IRISBOND CROWDBONDING, S.L. All rights reserved.

This document, including all supporting materials, is proprietary to IRISBOND CROWDBONDING, S.L.

As this document may contain information that is confidential, proprietary, or otherwise legally protected, it must not be further copied, distributed, or displayed without the express written permission of IRISBOND CROWDBONDING, S.L.

Products that are referred to in this document may be either trademarks and/or registered trademarks of the respective owners. The publisher and the author make no claim to these trademarks.

## Contact Information

IRISBOND CROWDBONDING, S.L

## How to update Hiru in Windows

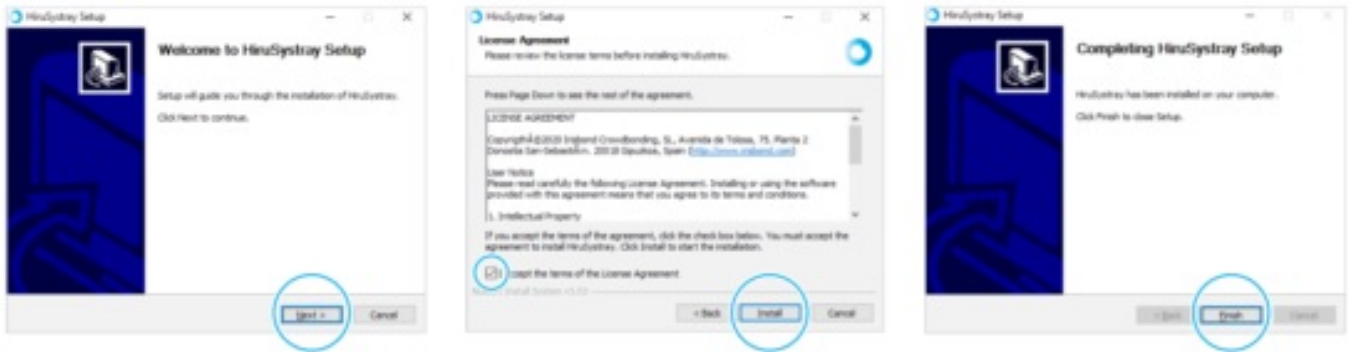
Hiru has continuous updates and new versions of firmware are released regularly. Update Hiru in Windows using our Systray app.

Download the latest version of the Systray app (below).

### Updating Hiru: Step by step

Install Systray from this link: <https://downloads.irisbond.com/systray>

Video tutorial **Update your Hiru in Windows.**

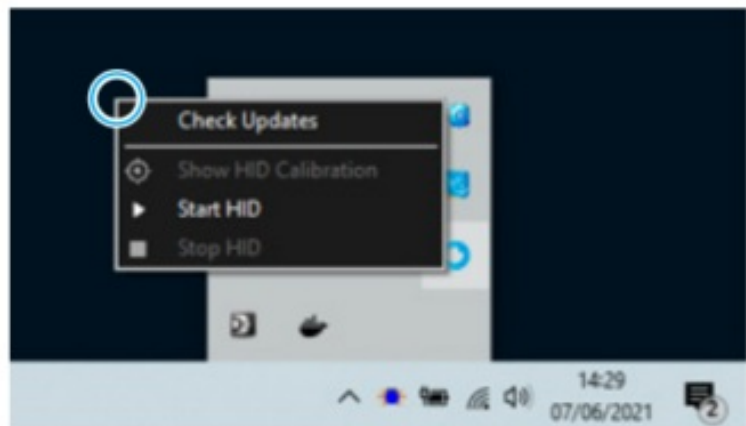
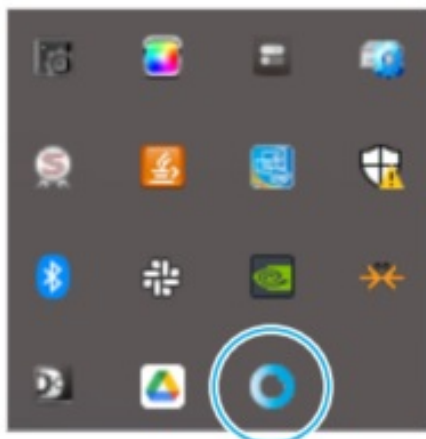


### Keep in mind

- IRISBOND's Systray App should always be installed.
- If an update is available, a notification will show up, please, DO NOT disconnect the Hiru during this process.
- If no notification is shown, please check that your device that the Focus Assistant is OFF and Notifications for Systray are ON.

The Systray icon will open in the Windows Toolbar (see image below).

If the Hiru is connected to the PC, the Systray will periodically check if there is a firmware update available. It is also possible to check for the updates by clicking on Check Updates.



Ensure the focus assistant is turned off, notifications for Systray are turned on in Windows Settings in Notifications and Actions, and be sure your WiFi is connected.

These are the notifications that you will receive once the process is started:

**Hiru update**

New update available. [Click here to update](#)

**Hiru update**

Download completed. Updating Device...

**Updating...**

**Hiru update**

Update completed. Hiru device will restart.  
Please, do not unplug the device.

Updated, do not remove the Hiru.

**Hiru update**

You already have the last Hiru update

Now, the Hiru is ready to be used!

Click **here** to check our Youtube channel and find out more about Hiru!

**CE & MDR | Technical Specifications**

**Compliance Information: CE and MDR**



**Compliance Information: CE and MDR**

MANUFACTURER	IRISBOND CROWDBONDING, SL VAT: ES-B75091058 ADDRESS: AVENIDA DE TOLOSA, 75 – 2º
APPLICABLE DIRECTIVE	COUNCIL DIRECTIVE 93/42/EEC of 14 June 1993 concerning medical devices
HARMONIZED STANDARDS	EN 55032 (2015) / AC (2016) / A11 (2020) EN 55035 (2017): UNE-EN 62471-1:2009 FCC CFR 47, Part 15, Subpart B (10-1-15 Edition) ICES-003 Issue 6 (2016)
PRODUCT	Sistema de control del ordenador con la mirada HIRU/ Eye tracking system HIRU
REFERENCE	IRISBOND HIRU
TEST CERTIFICATES	65321IEM.001 65321REM.001 65321REM.002 2251989-PHO-21-018A

The device model has been designed and manufactured in conformity with the Directive.

Eduardo Jauregui / Technical Director

#### **Declaration of conformity (MDR)**

We, Irisbond Crowdbonding Ltd, declare that the product listed below has been designed and manufactured in conformity with the Directive (UE) 2017/745:

MANUFACTURER	IRISBOND CROWDBONDING, SL ES-B75091058 AVENIDA DE TOLOSA, 75 – 2º +34 9434 96 622 <a href="http://www.irisbond.com">http://www.irisbond.com</a>
REFERENCE	IRISBOND HIRU
PRODUCT	Eye-tracking system HIRU

The aim of this declaration is a Class I Medical Device and is in conformity with the following harmonized legislation:

APPLICABLE DIRECTIVE	<ul style="list-style-type: none"><li>• Directive (UE) 2017/745 concerning medical devices, MDR.</li><li>• EMC Directive, 2004/108/EC.</li><li>• RoHS Directive, 2011/65/EU.</li><li>• FCC Rules and Regulations.</li></ul>
----------------------	---

The following harmonized standards and technical specifications have been applied:

HARMONIZED LEGISLATION	EN 55032 (2015) / AC (2016) / A11 (2020) EN 55035 (2017) UNE-EN 62471-1:2009 FCC CFR 47, Part 15, Subpart B (10-1-15 Edition) ICES-003 Issue 6 (2016)
TEST CERTIFICATES	65321IEM.001 65321REM.001 65321REM.002 2251989-PHO-21-018A

This declaration is signed on behalf of Irisbond Crowdbonding, Ltd in San Sebastián, on the 30th of April, 2021, by Eduardo Jauregui, CEO.



#### Declaration of conformity (MDR)

We, Irisbond Crowdbonding Ltd, declare that the product listed below has been designed and manufactured in conformity with the Directive (UE) 2017/745:

MANUFACTURER	IRISBOND CROWDBONDING, SL ES-B75091058 AVENIDA DE TOLOSA, 75 – 2 +34 9434 96 622 <a href="http://www.irisbond.com">http://www.irisbond.com</a>
REFERENCE	OSKOL WINDOWS
PRODUCT	This product is composed of the following elements: <ul style="list-style-type: none"><li>• Medical device; Eye-tracking system HIRU.</li><li>• Case to bundle the Irisbond HIRU eye tracker and the Surface Pro tablet (TPU material has PASSED skin sensitization and cytotoxicity tests in accordance with ISO 10993-5 and 10993-10).</li></ul>

The aim of this declaration is a Class I Medical Device and is in conformity with the following directives:

APPLICABLE DIRECTIVE	REGULATION (EU) 2017/745 OF THE EUROPEAN PARLIAMENT AND OF THE COUNCIL of 5 April 2017 on medical devices, MRD, amending Directive 2001/83/EC, Regulation (EC) No 178/2002 and Regulation (EC) No 1223/2009 and repealing Council Directive 90/385/EEC.
----------------------	---

The following harmonized standards and technical specifications have been applied:

HARMONIZED LEGISLATION	<p>HIRU:  EN 55032: 2015 / AC: 2016 / A11: 2020  EN 55035: 2017  UNE-EN 62471-1:2009  FCC CFR 47, Part 15, Subpart B (10-1-15 Edition)  ICES-003 Issue 6: 2016  OSKOL Windows:  ISO 10993-5  ISO 10993-10</p>
TEST CERTIFICATES	<p>65321IEM.001  65321REM.001  65321REM.002  2251989-PHO-21-018A</p>

This declaration is signed on behalf of Irisbond Crowdbonding, Ltd in San Sebastián, on the 30th of April, 2021, by Eduardo Jauregui, CEO.



#### Declaration of conformity (MDR)

We, Irisbond Crowdbonding Ltd, declare that the product listed below has been designed and manufactured in conformity with the Directive (UE) 2017/745:

MANUFACTURER	IRISBOND CROWDBONDING, SL ES-B75091058 AVENIDA DE TOLOSA, 75 – 2º San Sebastián, 20018 Guipúzcoa, Spain +34 9434 96 622 <a href="http://www.irisbond.com">http://www.irisbond.com</a>
REFERENCE	OSKOL iPad
PRODUCT	This product is composed of the following elements: <ul style="list-style-type: none"> <li>• Eye tracking system HIRU, medical device class I.</li> <li>• Case to bundle the Irisbond HIRU eye tracker and the iPad Pro tablet (TPU material has PASSED skin sensitization and cytotoxicity tests in accordance with ISO 10993-5 and 10993-10)</li> </ul>

The aim of this declaration is a Class I Medical Device and is in conformity with the following harmonized legislation:

APPLICABLE DIRECTIVE	REGULATION (EU) 2017/745 OF THE EUROPEAN PARLIAMENT AND OF THE COUNCIL of 5 April 2017 concerning medical devices, MDR, amending Directive 2001/83/EC, Regulation (EC) No 178/2002 and Regulation (EC) No 1223/2009 and repealing Council Directive 90/385/EEC.
----------------------	---

The following harmonized and/or unharmonized standards and technical specifications have been applied:

HARMONIZED LEGISLATION	HIRU: EN 55032: 2015 / AC: 2016 / A11: 2020 EN 55035: 2017 UNE-EN 62471-1:2009 FCC CFR 47, Part 15, Subpart B (10-1-15 Edition) ICES-003 Issue 6: 2016 OSKOL iPad: ISO 10993-5 ISO 10993-10
TEST CERTIFICATES	65321IEM.001 65321REM.001 65321REM.002 2251989-PHO-21-018A

This declaration is signed on behalf of Irisbond Crowdbonding, Ltd in San Sebastián, on the 30th of April, 2021, by Eduardo Jauregui, CEO.



## Technical Specifications

Optimum screen size	10-20"
Recommended working distance	35-80 cm.
Calibration	0, 1, 5, 9, 16 points
Selection mode	Dwell, Blink, Switch
Headbox	20 x 18 cm. at 50 cm.
Eye-tracking	Monocular and binocular
Accuracy	0.4°
Sampling rate (Frequency)	60 Hz.
Mounting	Holder, magnets, or specific adaptor for a consumer device
Operating system	Windows: 7-10 iPadOS: 13 or above Others: Please get in touch with us
Eye Tracking processing	Hiru on-chip eye-tracking technology
Minimum system requirements (laptop, PC, tablet)	<p>Eye-tracking processing is done at HIRU itself. System requirements related to the applications used with HIRU. Typically:</p> <ul style="list-style-type: none"> <li>• USB 3.0 -C</li> <li>• 1,33 GHz CPU</li> <li>• 2 GB RAM</li> <li>• 3GB + HDD Hard Disk</li> <li>• Intel Graphics, Nvidia, and others with OpenGL 2.0</li> <li>• iOS: iPad Pro</li> </ul>
Weight	115 g.
Dimensions	259 x 25 x 28 mm.
Eye-tracking technology	Dark pupil
USB connector	USB-C

See it Possible  
Avenida de Tolosa, 75. Floor 2  
Donostia San-Sebastián. 20018 Gipuzkoa  
Spain +34 943 49 66 22

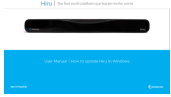
[www.irisbond.com](http://www.irisbond.com)

[info@irisbond.com](mailto:info@irisbond.com)



**Documents / Resources**





## [IRISBOND Hiru Window Eye Tracking System](#) [pdf] User Manual Hiru, Window Eye Tracking System, Hiru Window Eye Tracking System

### References

- [© IRISBOND | Eye-tracking interactivo, descubre el potencial de tu mirada](#)
- [🌐 downloads.irisbond.com/systray](https://downloads.irisbond.com/systray)