



iPOWER GXS4900RC Remote Control Generator User Guide

[Home](#) » [IPOWER](#) » iPOWER GXS4900RC Remote Control Generator User Guide 

Contents

- [1 iPOWER GXS4900RC Remote Control Generator](#)
- [2 Specifications:](#)
- [3 Product Usage Instructions](#)
- [4 FAQ](#)
- [5 Included Items](#)
- [6 Usage Instructions](#)
- [7 Documents / Resources](#)
 - [7.1 References](#)
- [8 Related Posts](#)



iPOWER GXS4900RC Remote Control Generator



Specifications:

- **Model:** GX54900RC
- **Power Output:** [Insert power output]
- **Fuel Type:** [Insert fuel type]
- **Engine Type:** [Insert engine type]
- **Weight:** [Insert weight]

Product Usage Instructions

Unpack Generator:

Remove the generator, accessories, inserts, and literature from the carton. If any item is missing or damaged, contact our productservice department at 855-888-3598.

Install the Wheel Kit:

Follow the instructions provided in the manual to install the wheel kit for easy portability.

Add Lubricant and Fuel:

Ensure you add the recommended lubricant and fuel to the generator. Follow the guidelines provided in the manual for the correct ratios and types of lubricant and fuel.

Adjust Shock-absorbing Seat:

Before operating the generator, adjust the shock-absorbing seat for proper clearance. Loosen the lock nut, adjust the seat to maintain a 3mm gap between the seat and motor bracket, then re-tighten the lock nut.

FAQ

• Can I use the generator indoors?

No, using the generator indoors can be extremely dangerous as generator exhaust contains carbon monoxide. Always operate the generator outside and far away from any living spaces.

• How do I start the generator?

Included Items



Usage Instructions

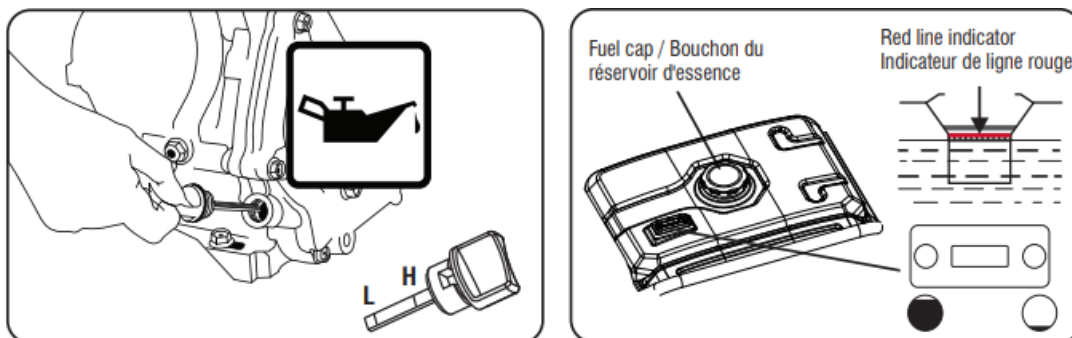
Install the wheel kit

-

Battery Cable Connection

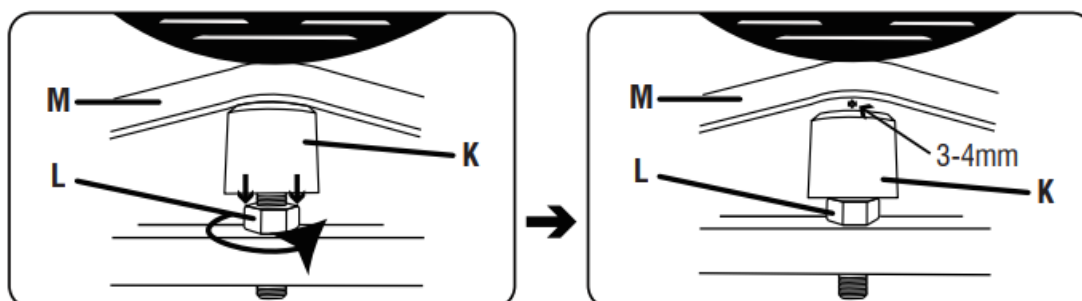
Add Lubricant and Fuel

- Use clean / fresh regular UNLEADED gasoline with a minimum 87 octane.
- Use clean / fresh regular UNLEADED gasoline with a minimum 87 octane.



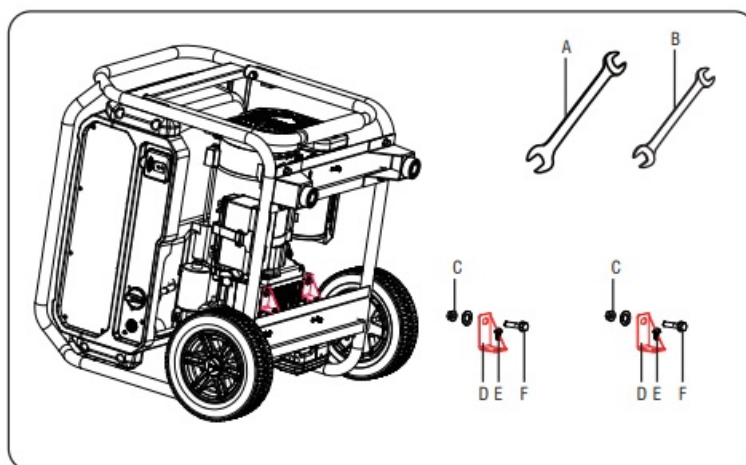
Adjust Shock-absorbing Seat

Before operating the generator, the shock-absorbing seat (cushion) must be adjusted for proper clearance. Loosen the lock nut and adjust the shock-absorbing seat so there is a 3mm gap between the top of the seat and the bottom of the motor bracket. Re-tighten the lock nut.



Removal of Shipping Support Brackets

Remove the bolt (E) with double open wrench (8mm-10mm) (B). Remove the bolt (F) and nut (C) with double open wrench (13mm-15mm) (A) and double open wrench (8mm-10mm) (B).



CAUTION Failure to remove the support brackets, can result in damage to your generator, possible personal injury and void your warranty.

Start Generator

Move generator outside to a flat, level surface, away from doors, windows and vents.

DANGER

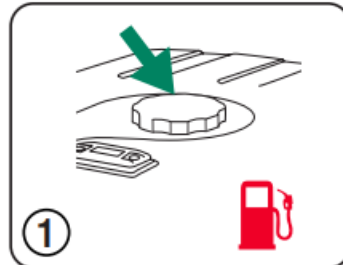
- Using a generator indoors can kill you in minutes. Generator exhaust contains carbon monoxide. This is a

poison you cannot see or smell.

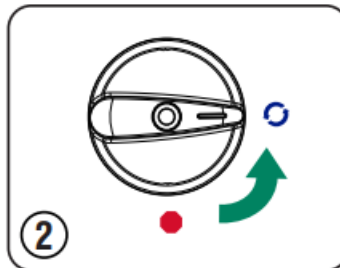
- never use inside a home or garage, even if doors and windows are open.
- only use outside and far away from windows, doors and vents.
- avoid other generator hazards. Read manual before use.

WARNING Do not overload generator or electrical cords. Consult operation manual.

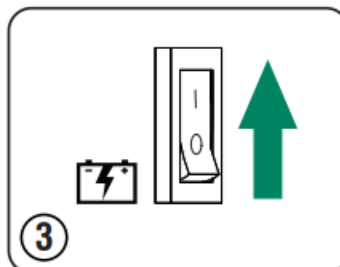
1. Add gasoline to the fuel tank.



2. Turn the starting dial switch to the position.



3. Turn the battery switch to the "ON"(I) position.

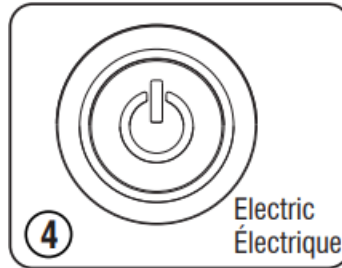
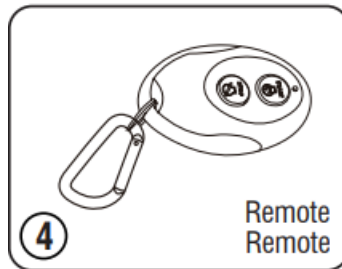


4. Remote Start

Turn and hold the REMOTE START switch for 5 seconds until the engine start.

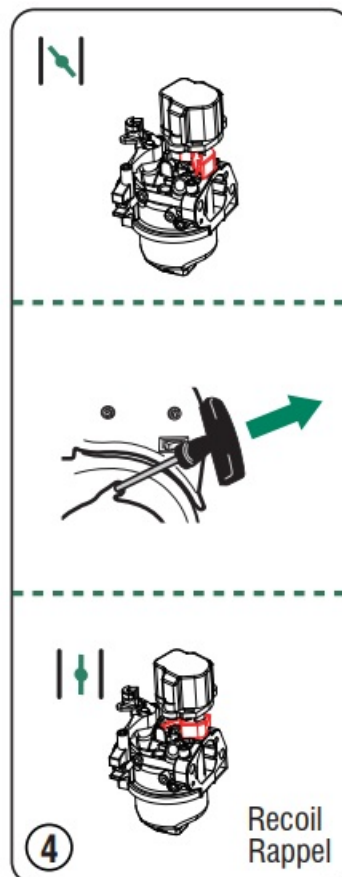
Electric Start

Turn and hold the ENGINE START/STOP switch for 5 seconds until the engine start.

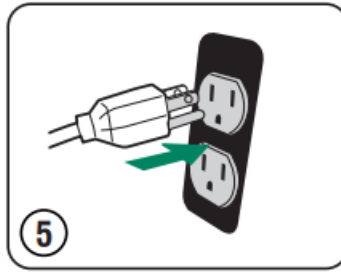


Recoil Start

- Move the choke lever to the “START” position.
- Pull recoil starter slowly until resistance is felt, then pull rapidly.
- Move the choke lever to the “RUN” position.

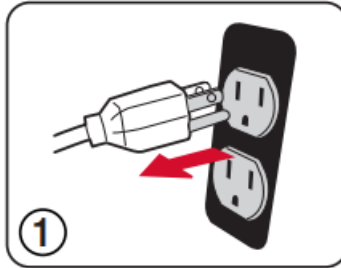


5. Plug in items to be powered, using only grounded extension cords.

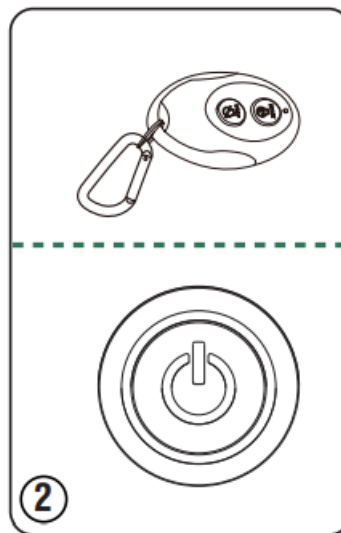


Shutdown and Storage

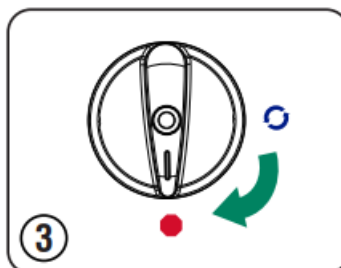
1. Remove any load from the generator.



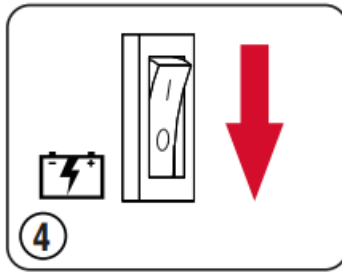
2. Push STOP on the remote start key fob for 3second.
Push and hold the START/STOP button for 3 second.



3. Turn the starting dial switch to the position.



4. Turn off the battery switch to "OFF" position.



If generator is to be stored for longer than 30 days, refer to the operator's manual for further Instruction.

Questions?

Call 855-888-3598 or email support@a-ipower.com

Documents / Resources



[iPOWER GX54900RC Remote Control Generator](#) [pdf] User Guide
GX54900RC Remote Control Generator, GX54900RC, Remote Control Generator, Control Gen
erator

References

- [User Manual](#)

Manuals+, Privacy Policy

This website is an independent publication and is neither affiliated with nor endorsed by any of the trademark owners. The "Bluetooth®" word mark and logos are registered trademarks owned by Bluetooth SIG, Inc. The "Wi-Fi®" word mark and logos are registered trademarks owned by the Wi-Fi Alliance. Any use of these marks on this website does not imply any affiliation with or endorsement.