



iPOWER AP5000 Generator User Guide

[Home](#) » [iPOWER](#) » iPOWER AP5000 Generator User Guide 

Contents

- [1 iPOWER AP5000 Generator](#)
- [2 Included Items](#)
- [3 INSTALLATION](#)
- [4 Add Lubricant and Fuel](#)
- [5 Adjust Shock-absorbing Seat](#)
- [6 Start Generator](#)
- [7 Shutdown and Storage](#)
- [8 Documents / Resources](#)
 - [8.1 References](#)
- [9 Related Posts](#)

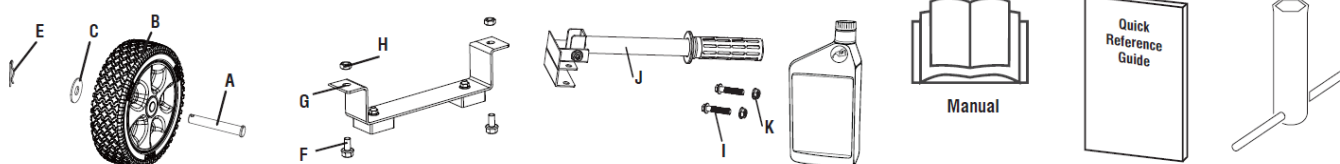


iPOWER AP5000 Generator



Unpack Generator: Remove generator, accessories, inserts and Literature from carton. If any item is missing or damaged, contact our product service department at 1-855-888-3598

Included Items



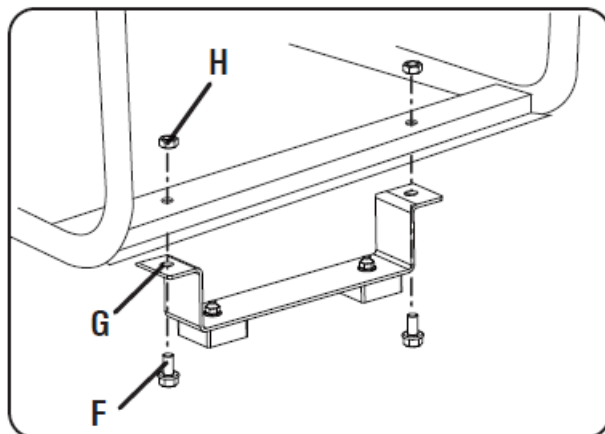
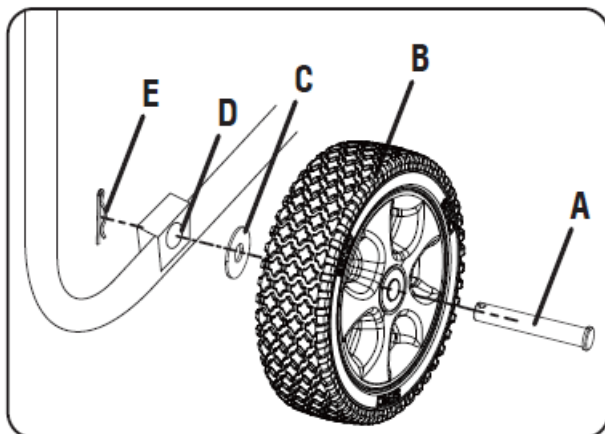
WARNING

This Quick Reference Guide is not substitute for reading the operator's manual. To reduce the risk of injury or death, user must read and understand the operator's manual before using this product. All pages references to the operator's manual.

INSTALLATION

Install the wheel kit

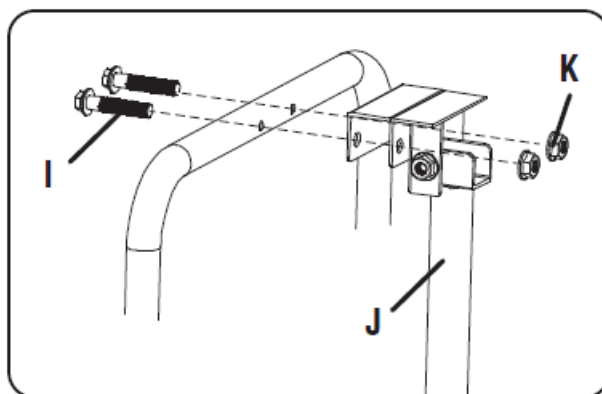
Slide the axle pin(A) through the wheel(B), flat washer(C) and mount point on the frame(D). Secure them with cotter pin(E).



Attach the support leg(G) to the generator frame with flange bolt(F)(M8X16) and flange lock nut(H)(M8).

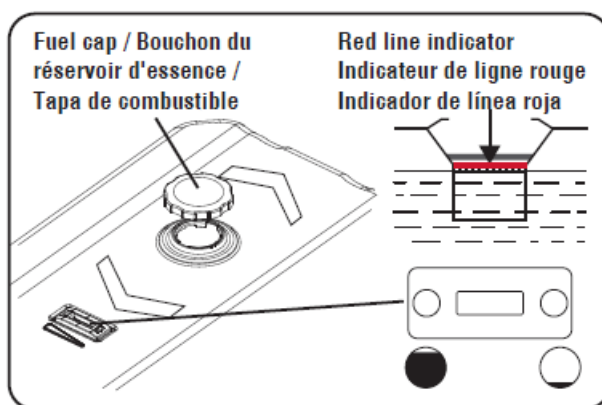
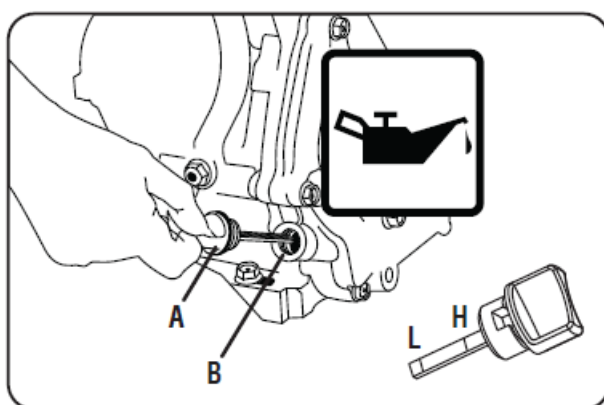
Install the Handle Assy

Unscrew bolts (I) and nuts (K) on the handle, insert bolts (I) through the handle (J) and holes on the generator frame as shown. Tighten bolts (I) and nuts (K).



Add Lubricant and Fuel

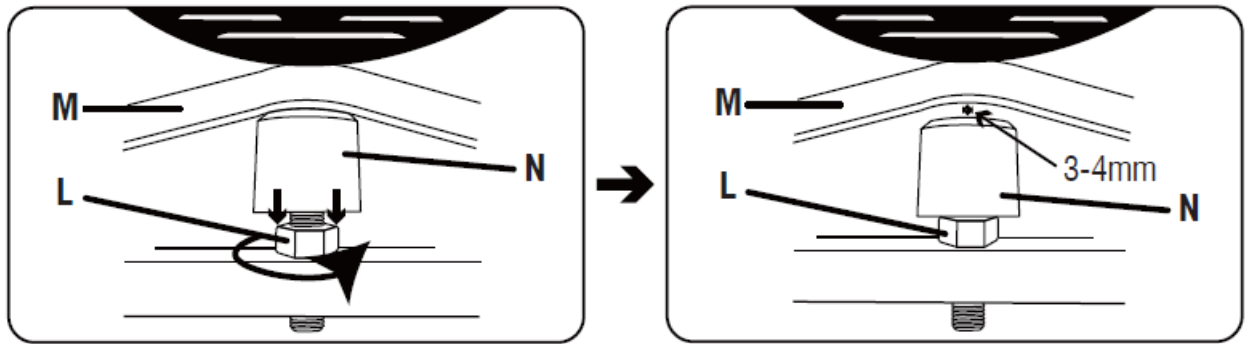
Use a funnel to pour provided engine oil into engine. Fill to the upper mark of the oil dipstick H.



Use clean / fresh regular UNLEADED gasoline with a minimum 87 octane.

Adjust Shock-absorbing Seat

Before operating the generator, the shock-absorbing seat (cushion) must be adjusted for proper clearance. Loosen the lock nut and adjust the shock-absorbing seat so there is a 3mm gap between the top of the seat and the bottom of the motor bracket. Re-tighten the lock nut.



Start Generator

Move generator outside to a flat, level surface, away from doors, windows and vents.

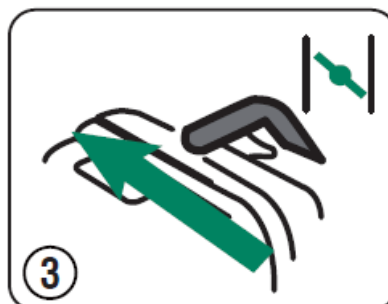
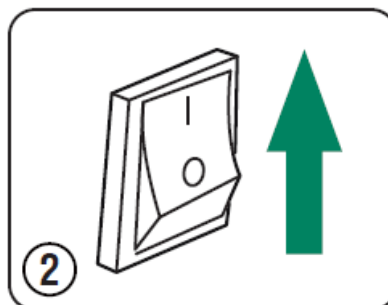
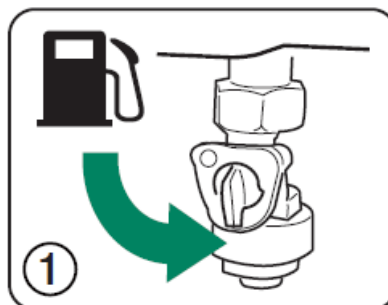
DANGER

Using a generator indoors CAN KILL YOU IN MINUTES. Generator exhaust contains carbon monoxide. This is a poison you cannot see or smell.

WARNING

Do not overload generator or electrical cords. Consult operation manual

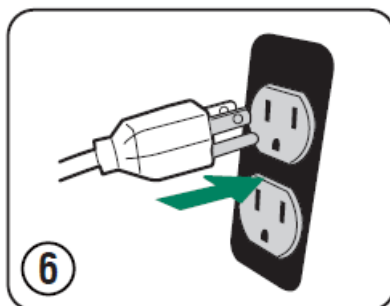
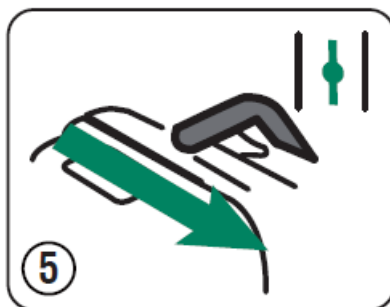
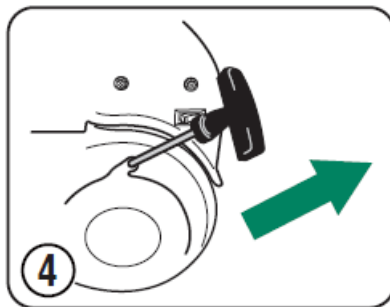
1. Turn fuel valve under tank to ON position
2. Turn engine switch located on control panel to ON position
3. Move choke lever located on engine to START position



4. Pull cord starter to start engine

5. Move choke lever to RUN Position

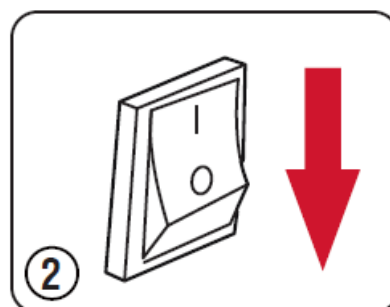
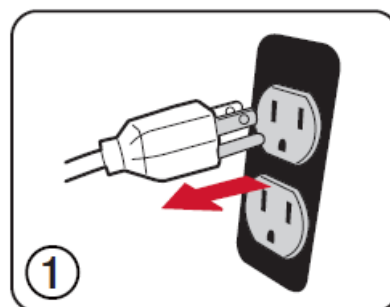
6. Plug in items to be powered, using only grounded extension cords



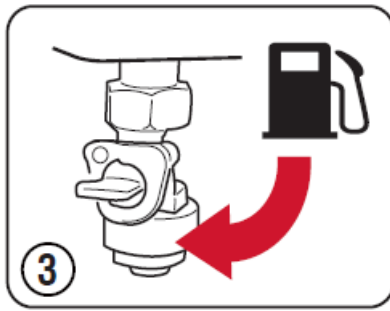
Shutdown and Storage

1. Remove any load from the generator

2. Run the generator at no load for 2 minutes and then turn engine switch to OFF position




3. Turn fuel valve to OFF(O)position



If generator is to be stored for longer than 30 days, refer to The operator's manual for further Instruction

Questions? Call 1-855-888-3598 or email support@a-ipower.com

Documents / Resources

	<p>iPOWER AP5000 Generator [pdf] User Guide AP5000 Generator, AP5000, Generator</p>
---	---

References

- [🔌 Domain Names and Web Hosting by IPOWER](#)

[Manuals+](#)