

[Skip to content](#)

Manuals+

User Manuals Simplified.

IPER CHIAVI TC421 WiFi Time Programmable Controller Instructions



[Home](#) » [IPER CHIAVI](#) » IPER CHIAVI TC421 WiFi Time Programmable Controller Instructions

Contents [hide](#)

[1 IPER CHIAVI TC421 WiFi Time Programmable Controller Instructions](#)

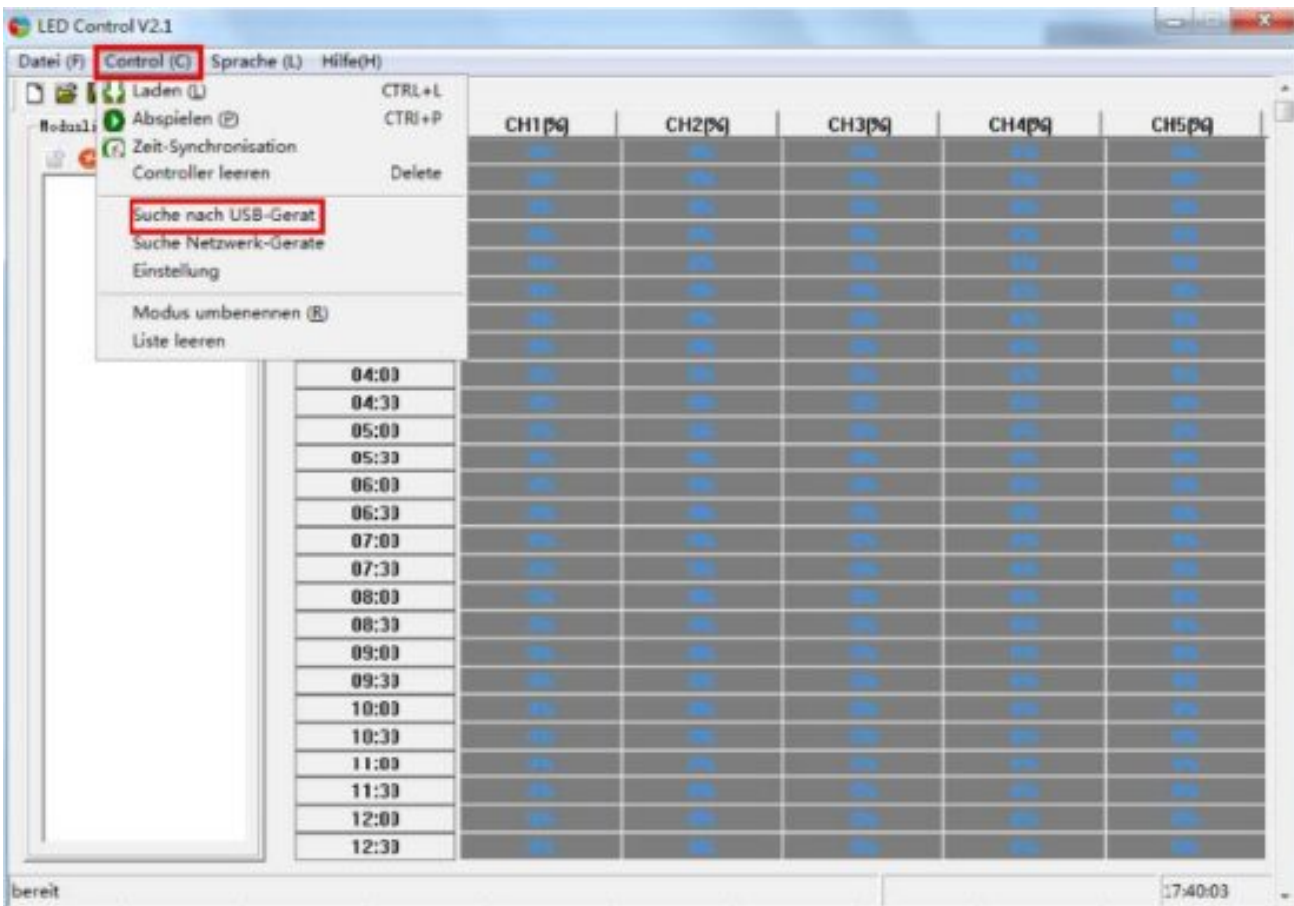
[2 Documents / Resources](#)

[3 Related Posts](#)

IPER CHIAVI TC421 WiFi Time Programmable Controller Instructions

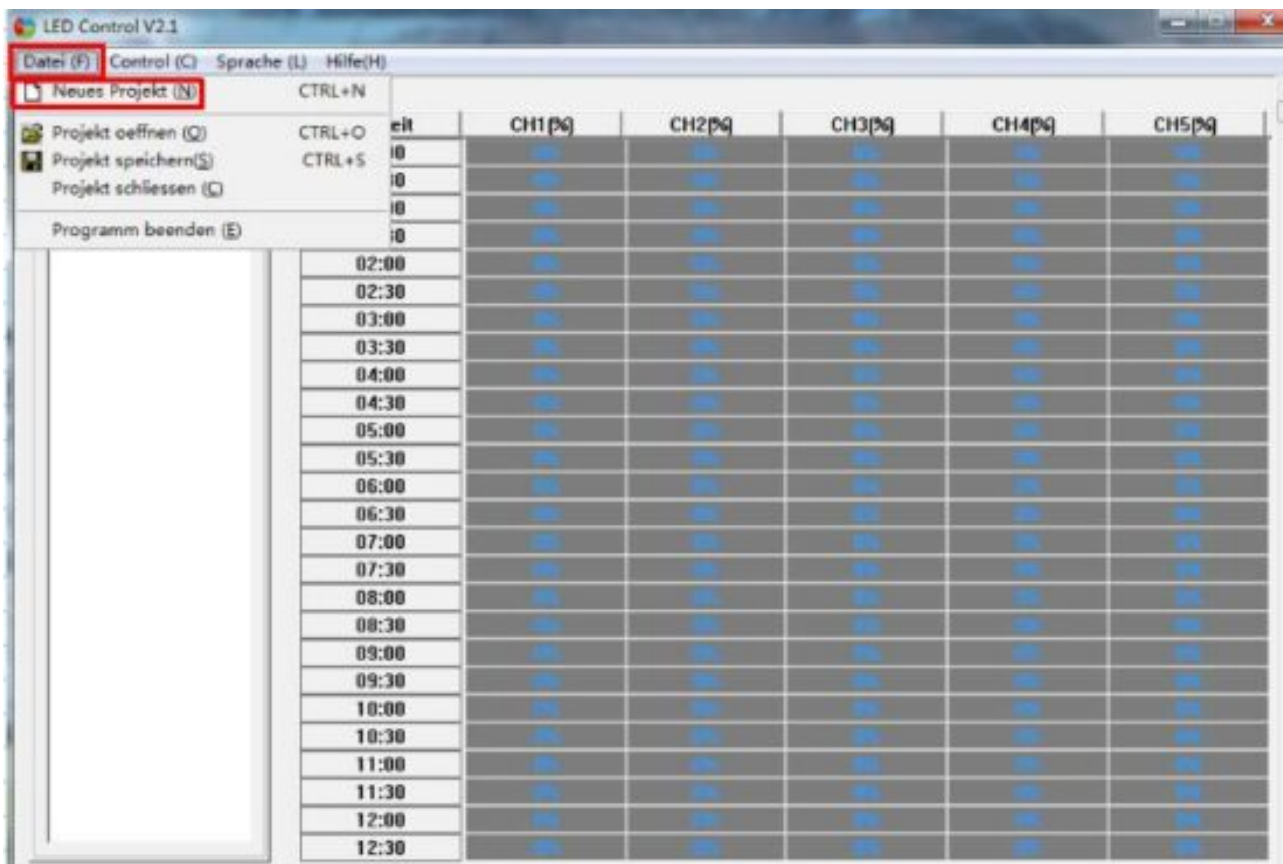


1. When using the controller on the computer for the first time or when the download mode cannot connect to the controller, the computer should be searched by the controller. Click on the "control" menu bar such as nach usb-gerat (if you have used the same controller on this computer before, you can use it without searching).



2. Set new project

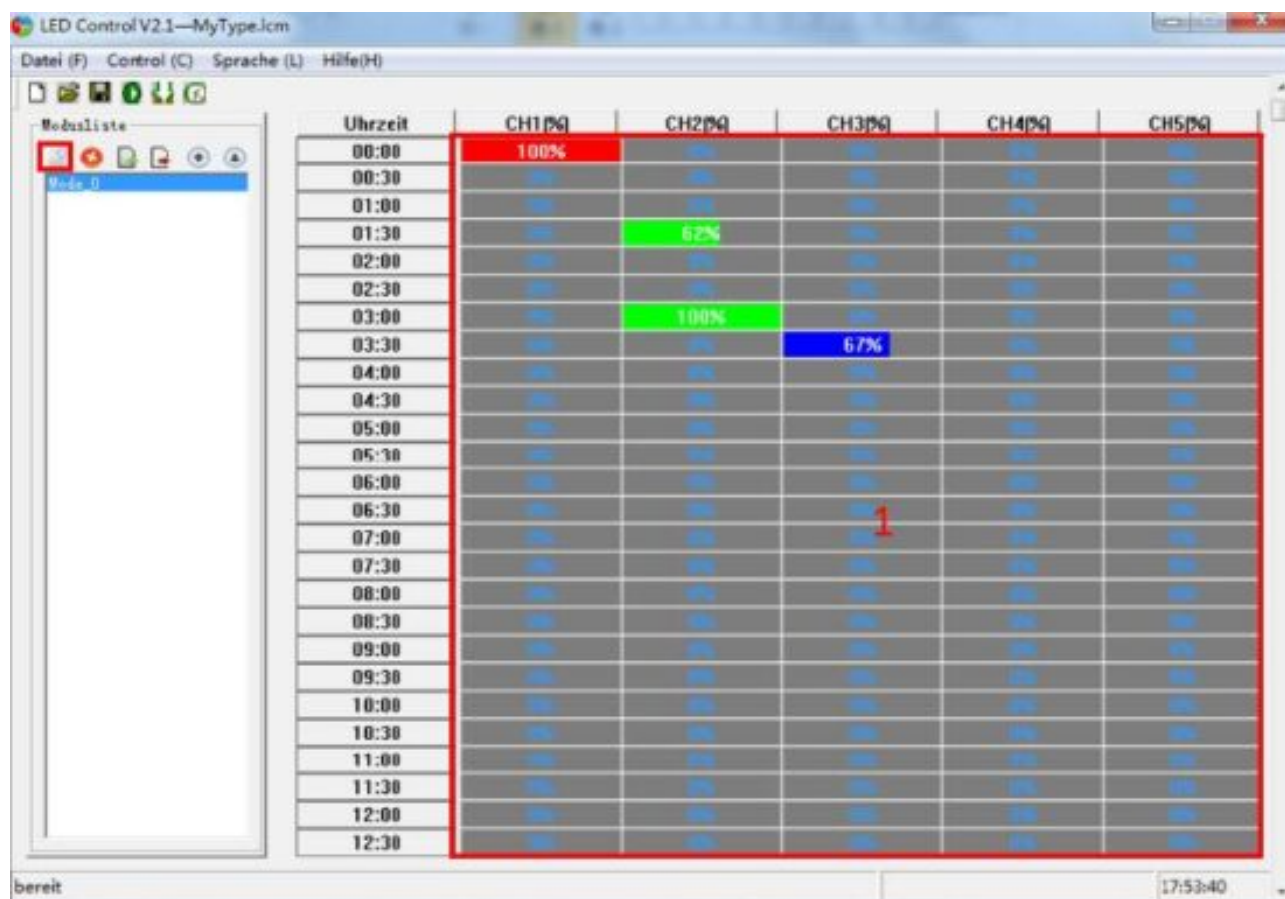
Click "Neues Projekt" under the "Datei" directory to create a new project.



3. Set up a new project

Click on the new mode icon to create a new mode, and then the mode adjust the area "1" to set the time and mode

types.



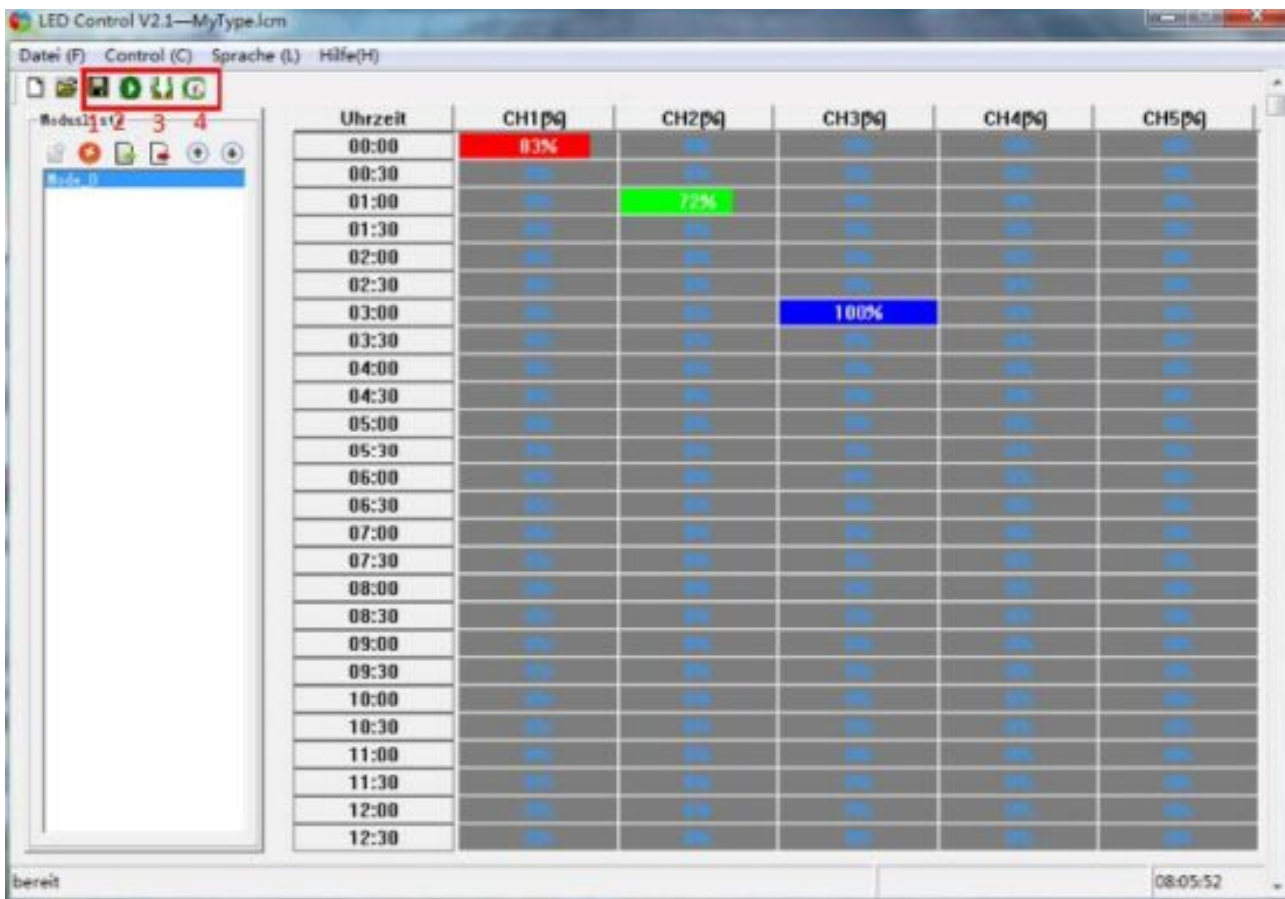
The screenshot shows the 'LED Control V2.1—MyType.lcm' application window. On the left is a 'Modusliste' sidebar with icons. The main area is a table with columns for 'Uhrzeit' (Time) and five channels 'CH1[%]', 'CH2[%]', 'CH3[%]', 'CH4[%]', and 'CH5[%]'. The table contains 25 rows of time slots from 00:00 to 12:30. Channel 1 is set to 100% (red) from 00:00 to 00:30. Channel 2 is set to 62% (green) from 01:30 to 02:30 and 100% (green) from 03:00 to 03:30. Channel 3 is set to 67% (blue) from 03:30 to 04:00. A red number '1' is next to the 06:30 time slot. The status bar at the bottom shows 'bereit' and the time '17:53:40'.

Uhrzeit	CH1[%]	CH2[%]	CH3[%]	CH4[%]	CH5[%]
00:00	100%	0%	0%	0%	0%
00:30	0%	0%	0%	0%	0%
01:00	0%	0%	0%	0%	0%
01:30	0%	62%	0%	0%	0%
02:00	0%	0%	0%	0%	0%
02:30	0%	0%	0%	0%	0%
03:00	0%	100%	0%	0%	0%
03:30	0%	0%	67%	0%	0%
04:00	0%	0%	0%	0%	0%
04:30	0%	0%	0%	0%	0%
05:00	0%	0%	0%	0%	0%
05:30	0%	0%	0%	0%	0%
06:00	0%	0%	0%	0%	0%
06:30	0%	0%	0%	0%	0%
07:00	0%	0%	0%	0%	0%
07:30	0%	0%	0%	0%	0%
08:00	0%	0%	0%	0%	0%
08:30	0%	0%	0%	0%	0%
09:00	0%	0%	0%	0%	0%
09:30	0%	0%	0%	0%	0%
10:00	0%	0%	0%	0%	0%
10:30	0%	0%	0%	0%	0%
11:00	0%	0%	0%	0%	0%
11:30	0%	0%	0%	0%	0%
12:00	0%	0%	0%	0%	0%
12:30	0%	0%	0%	0%	0%

With WIFI time programmable controller upper machine operation instruction manual

4. Download the mode to the controller

When you have set the mode, click “1 ” to save the set mode, click “4” to calibrate the time of PC and controller, and click “2” to browse the mode of the current setting. Click “3” to download the set mode to the controller.



5. File copy note

The project file and the mode file need to be copied together, otherwise the copy file is invalid. as follows:



Mode_0.lmf
LMF 文件
1 KB



MyType.lcm
LCM 文件
1 KB

The above picture My Type. l cm is the project file, and Mode x. lmf is the mode file.

Note: the PC side does not support adding the controller to the router. If you want to add the controller to the router, please add and operate the controller via the mobile phone.

Read More About This Manual & Download PDF:

Documents / Resources



[IPER CHIAVI TC421 WiFi Time Programmable Controller \[pdf\] Instructions](#)
TC421, WiFi Time Programmable Controller, TC421 WiFi Time Programmable Controller

[Manuals+](#),

- [home](#)
- [privacy](#)