

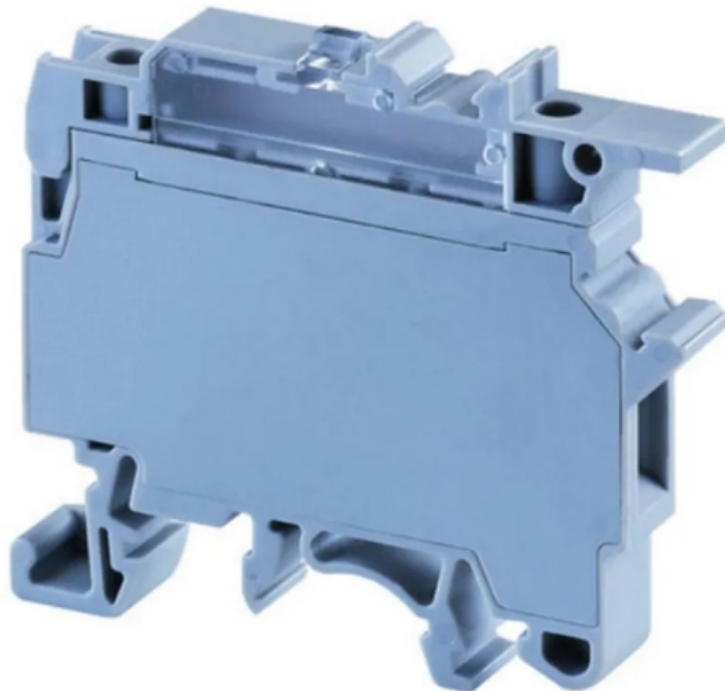


ipd CF4U Fuse Terminal Block Owner's Manual

[Home](#) » [ipd](#) » ipd CF4U Fuse Terminal Block Owner's Manual 



Product No: CF4U
CONNECTWELL CF4U FUSE TERMINAL BLOCK (ENCLOSED)
SCREW CLAMP 0.2-4mm² 800V/6.3A



Contents

[1 CF4U Fuse Terminal Block](#)

[2 Documents / Resources](#)

[2.1 References](#)

CF4U Fuse Terminal Block

INSTALLATION & ACCESSORIES > WIRING TERMINALS & DUCTS > FUSE TERMINAL BLOCKS


General Information	
Brand	CONNECTWELL
Product Type	Single Level
Technical Attributes	
Rated Current (A)	6.3
Rated Voltage (V)	800
Tightening Torque (Nm)	0.5
Physical Attributes	
Colour	Grey
Conductor Cross Section – Stranded (mm ²)	0.2 – 4
Mounting Type	DIN Rail
Screw Size	M3
Dimensions	
Dimensions (mm)	57L x 8W x 50.3H
Resources	
Product catalogue (Flipbook)	Download from here



1300 556 601

ipd.com.au

20-02-2024

	<p>ipd CF4U Fuse Terminal Block [pdf] Owner's Manual CF4U Fuse Terminal Block, CF4U, Fuse Terminal Block, Terminal Block</p>
--	--

References

-  [Electrical Products, Solutions & Accessories - IPD Australia](#)
-  [IPD Product Catalogue V17](#)
- [User Manual](#)

Manuals+, Privacy Policy

This website is an independent publication and is neither affiliated with nor endorsed by any of the trademark owners. The "Bluetooth®" word mark and logos are registered trademarks owned by Bluetooth SIG, Inc. The "Wi-Fi®" word mark and logos are registered trademarks owned by the Wi-Fi Alliance. Any use of these marks on this website does not imply any affiliation with or endorsement.