

IPC Bracket 1 Headboard Bracket



IPC Bracket 1 Headboard Bracket Instructions

[Home](#) » [ipc](#) » IPC Bracket 1 Headboard Bracket Instructions 

Contents

- [1 IPC Bracket 1 Headboard Bracket](#)
- [2 Headboard Bracket Instruction](#)
- [3 Documents / Resources](#)
 - [3.1 References](#)
- [4 Related Posts](#)

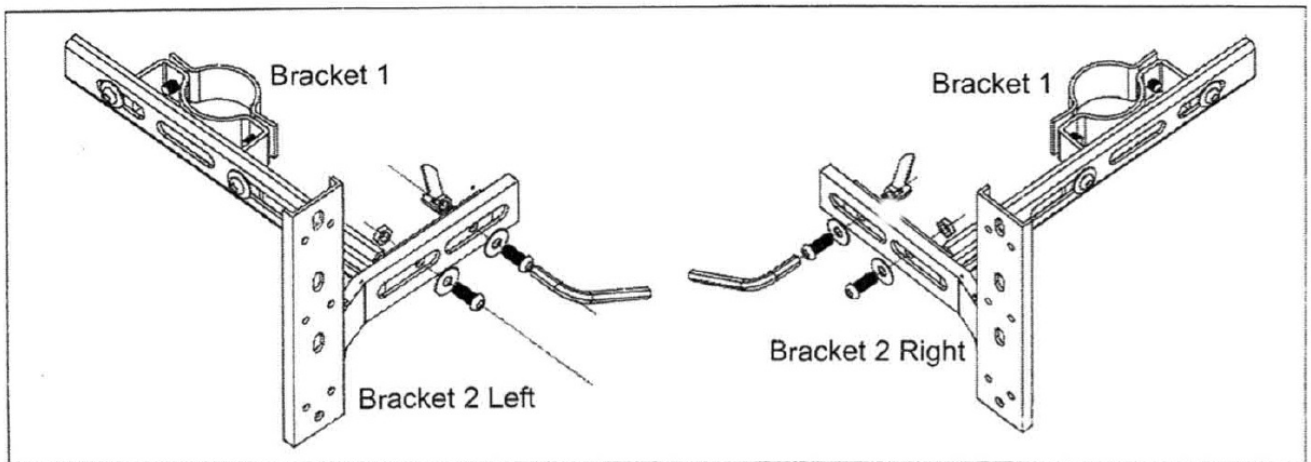
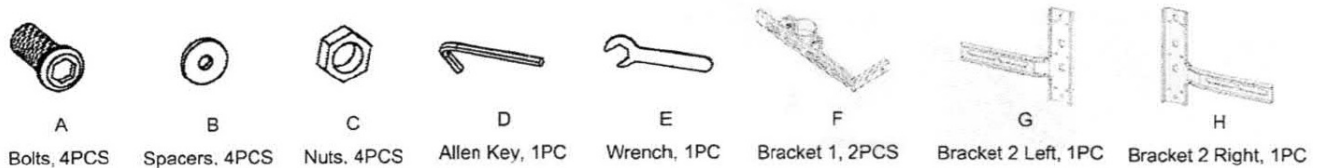
IPC

IPC Bracket 1 Headboard Bracket

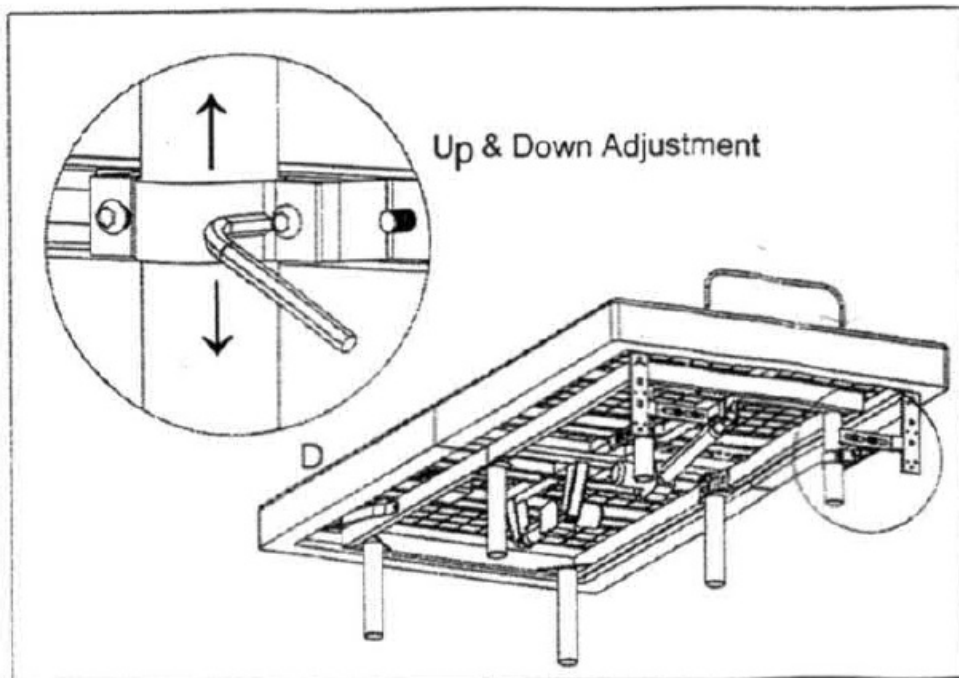


Headboard Bracket Instruction

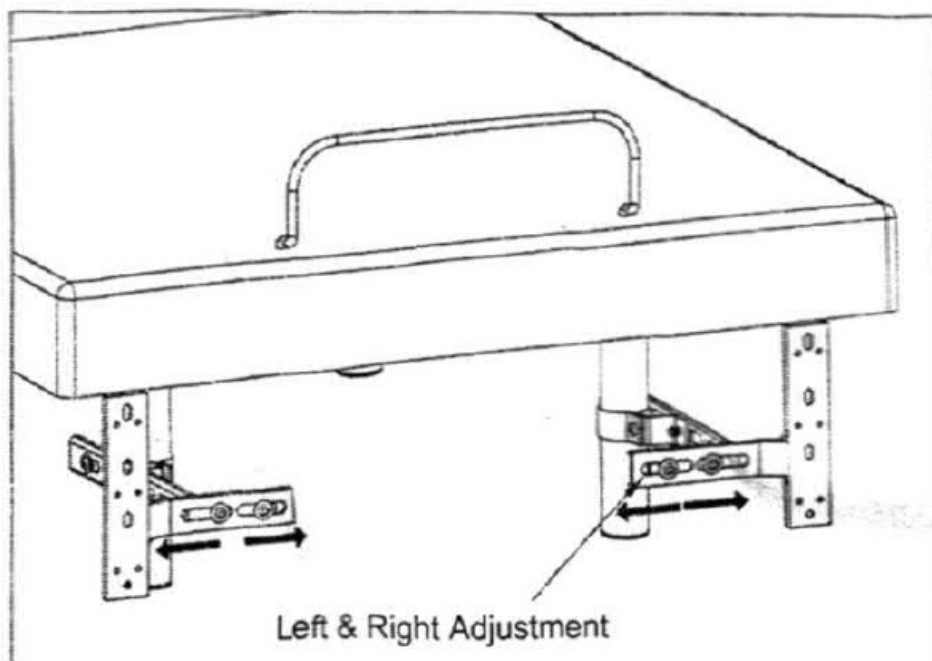
1.



Please use 2 Bolts (A), 2 Spacers (B), and 2 Nuts (C) to connect. Bracket 1 (F) and Bracket 2 (G) by Allen Key (D), but do not tighten.



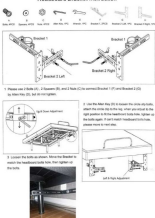
2. Use the Allen Key (D) to loosen the circle elf bolts, attach the circle clip to the leg, when you adjust to the right position to fit the headboard bolts hole, tighten up the bolts again. If can't match the headboard bolts hole, please move to next step.



3. Loosen the bolts as shown. Move the Bracket to match the headboard bolts hole, then tighten up the bolts.



Documents / Resources

	<p>IPC Bracket 1 Headboard Bracket [pdf] Instructions Bracket 1 Headboard Bracket, Bracket 1, Headboard Bracket, Bracket</p>
---	--

References

- [User Manual](#)

[Manuals+](#), [Privacy Policy](#)

This website is an independent publication and is neither affiliated with nor endorsed by any of the trademark owners. The "Bluetooth®" word mark and logos are registered trademarks owned by Bluetooth SIG, Inc. The "Wi-Fi®" word mark and logos are registered trademarks owned by the Wi-Fi Alliance. Any use of these marks on this website does not imply any affiliation with or endorsement.