

IP-INTEGRA TECHNOLOGIES Network Configurator Password Reset Application User Guide

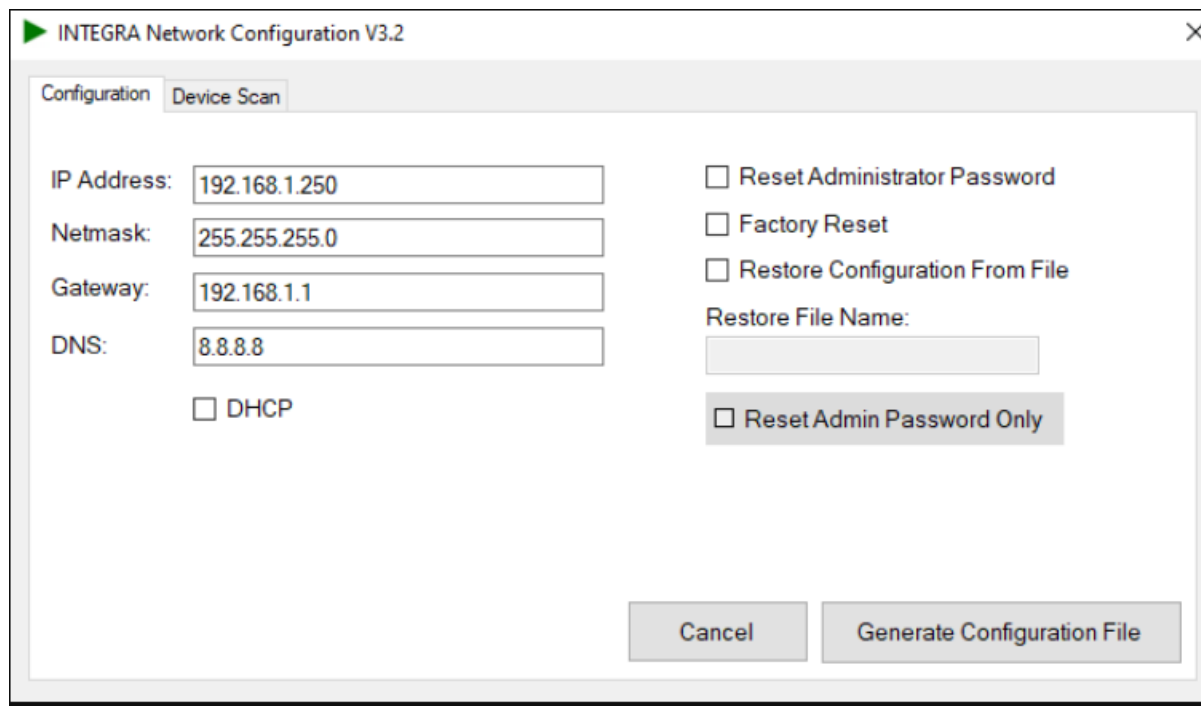
[Home](#) » [IP-INTEGRA TECHNOLOGIES](#) » IP-INTEGRA TECHNOLOGIES Network Configurator Password Reset Application User Guide 

Contents

- [1 IP-INTEGRA TECHNOLOGIES Network Configurator Password Reset Application](#)
- [2 Specifications](#)
- [3 Product Usage Instructions](#)
- [4 The Procedure](#)
- [5 Frequently Asked Questions](#)
- [6 Documents / Resources](#)
 - [6.1 References](#)
- [7 Related Posts](#)



IP-INTEGRA TECHNOLOGIES Network Configurator Password Reset Application



Specifications

- **Product Name:** IP-INTEGRA Network Configurator
- **Password Reset Method:** USB Configuration File
- **Supported Devices:** Compatible with devices requiring admin password reset

Product Usage Instructions

- **Step 1: Power Off the Device**
 - Ensure that the device for which you need to reset the password is powered off.
- **Step 2: Download and Unzip the IP-INTEGRA Network Configurator**
 - Download the IP-INTEGRA Network Configurator software from the official website and unzip the files.
- **Step 3: Run the IP-INTEGRA Network Configurator**
 - Launch the IP-INTEGRA Network Configurator software on your computer.
- **Step 4: Generate Configuration File**
 - In the Network Configurator, select “Reset Admin Password Only” and click on “Generate Configuration File”.
- **Step 5: Transfer File to USB Stick**
 - Insert a USB thumb drive into your computer and move the generated configuration file to the USB stick.
- **Step 6: Connect USB Stick to Device**
 - Remove the USB stick from the computer and insert it into the device that requires the password reset.
- **Step 7: Power On the Device**
 - Power on the device. During boot-up, the device will load the configuration file from the USB stick and restore the default admin password.

The Procedure

1. First power of the device that requires a password reset.

2. Download and unzip the IP-INTEGRA Network Configurator.
3. Run the IP-INTEGRA Network Configurator.

INTEGRA Network Configuration V3.2

Configuration | Device Scan

IP Address: 192.168.1.250

Netmask: 255.255.255.0

Gateway: 192.168.1.1

DNS: 8.8.8.8

☐ DHCP

☐ Reset Administrator Password

☐ Factory Reset

☐ Restore Configuration From File

Restore File Name:

☐ Reset Admin Password Only

Cancel Generate Configuration File

4. Tick the “Reset Admin Password Only” and click on Generate Configuration File.
5. Plug in the USB thumb stick and move the generated file to the stick.
6. Unplug the USB stick from PC.
7. Plug in the USB stick in the device that requires password reset.
8. Power on the device.

During boot-up the device will load the generated file and restore the default admin password.

Frequently Asked Questions

- **Q: Can I use the IP-INTEGRA Network Configurator for devices other than password resets?**
 - A: The IP-INTEGRA Network Configurator is specifically designed for resetting admin passwords on compatible devices.
- **Q: Do I need an internet connection to use this tool?**
 - A: No, the tool operates locally on your computer and does not require an active internet connection.

Documents / Resources

	<p>IP-INTEGRA TECHNOLOGIES Network Configurator Password Reset Application [pdf] User Guide</p> <p>Network Configurator Password Reset Application, Configurator Password Reset Application, Password Reset Application, Reset Application, Application</p>
--	---

References

- [User Manual](#)