

# iotty MLS2E102 Smart Wi-Fi Switch for Light and Gate Instruction Manual

[Home](#) » [iotty](#) » iotty MLS2E102 Smart Wi-Fi Switch for Light and Gate Instruction Manual 



**Model: E1PLUS**  
**ID: LSW2E1**  
**MLS2E102**

## Contents

- [1 Technical specifications](#)
- [2 Important notes](#)
- [3 Troubleshooting](#)
- [4 Device overview](#)
- [5 Installation steps](#)
- [6 Documents / Resources](#)
  - [6.1 References](#)
- [7 Related Posts](#)

## Technical specifications

E1 PLUS Smart Switch  
Model: E1PLUS  
ID: LSW2E1  
Input: 230 Vac  
Frequency: 50Hz  
Max 5A per RL  
Ambient temperature: 25°C

Operating temperature: from 0°C to 40°C

Only works with 2.4GHz Wi-Fi band

Frequency range: 2412-2472MHz

Maximum RF output power of the product: 17.29 dBm

RF exposure information: The Maximum

Permissible Exposure (MPE) level is calculated based on a distance of d=20 cm between the device and the human body. To maintain compliance with the RF exposure requirement, a separation distance of 20 cm between the device and the human should be maintained.

## Important notes

### Safety Precaution

Incorrect installation is dangerous or illegal. Install in accordance with all national and local codes.

Hire a professional electrician if you are not familiar or not comfortable with electrical work, or if the wiring in your electrical box looks different from the pictures.

For indoor use and dry location only.

### Installation Precaution

Neutral wire required. Input L/N should be connected to a 16 A circuit breaker, and each way output should be connected to a 5 A circuit breaker before used. Cable size: from 1,2 mm<sup>2</sup> to 2,5 mm<sup>2</sup> – select the cable size properly according to the load current.

### Multi-way (3-way via Wi-Fi)

A 3-way switch allows you to control an electrical load (lamp) from 2 different locations.

Thanks to the Multi-way feature, you can connect multiple iotty switches together through the Wi-Fi network and take control of the same light.

For more details check: [link.iotty.com/multi-way](https://link.iotty.com/multi-way)

## Troubleshooting

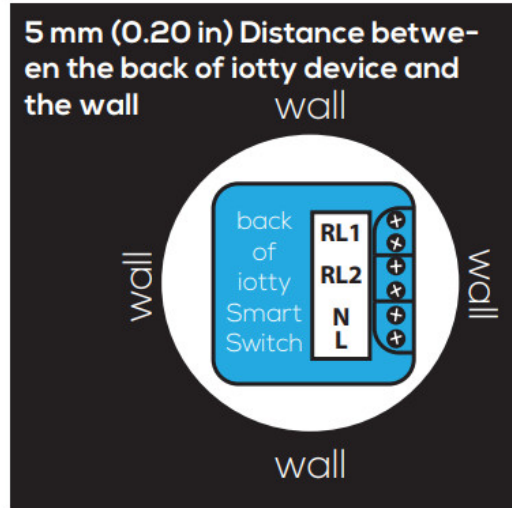
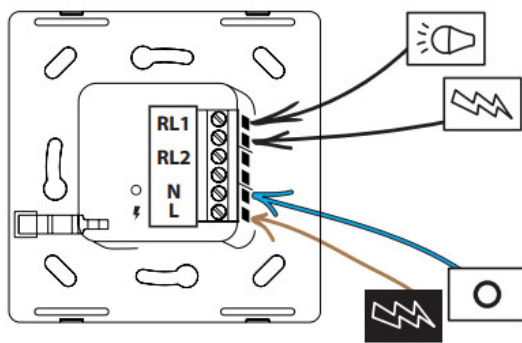
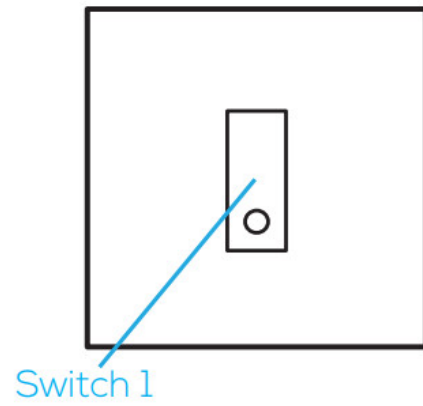
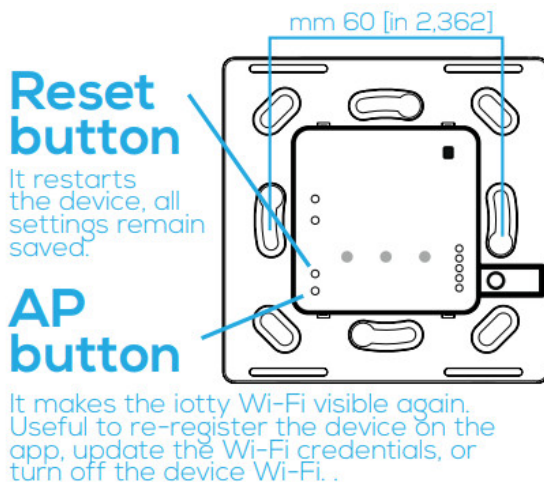
In case of network error, try these steps in order:

- Restart the router and wait a few minutes to allow all devices to reconnect OR, if the problem persists,
- With the palm of your hand, cover all the buttons and hold for a long time to restart the device OR, if the problem persists,
- Remove the faceplate and push the AP button on the switch. Repeat device registration

### Warranty

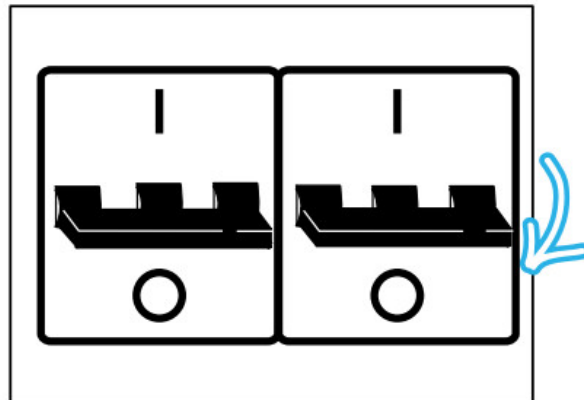
For warranty information visit us at [link.iotty.com/warranty](https://link.iotty.com/warranty)

## Device overview



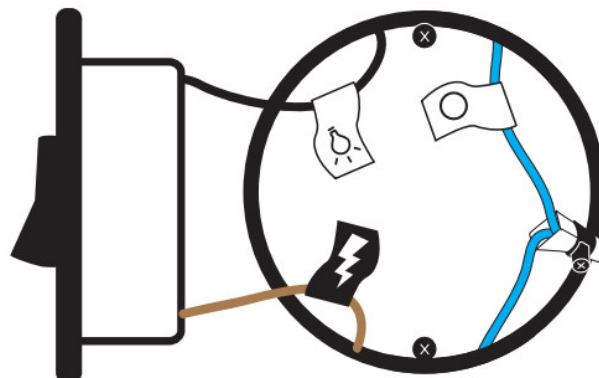
## Installation steps

1



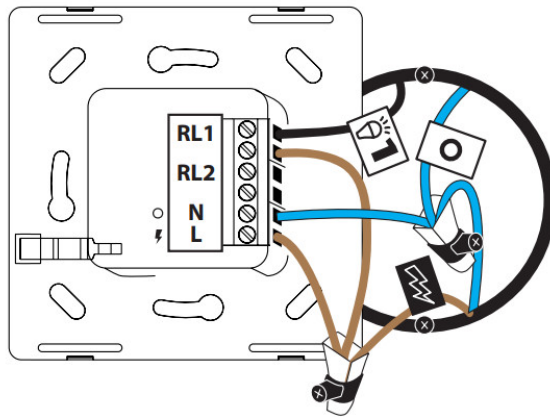
Turn off the power at the circuit breaker for the switch you are replacing.

2



Remove your old switch and label your wires.  
Remember that you must have neutral wire.

# 3



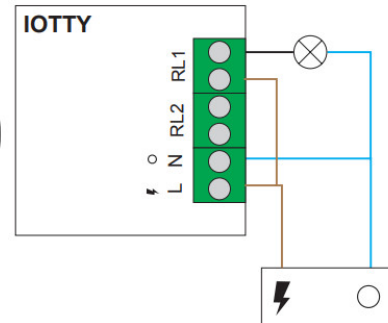
Main power supply 230 Vac

⚡ = Live/power

○ = Neutral

💡 = Load/lamp

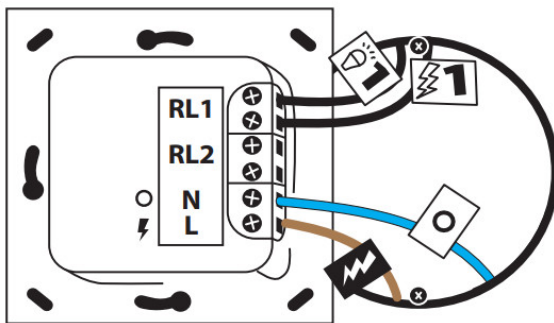
⊗ = Load/lamp



## Wire the iotty plate

Insert the power wire into terminal L. Insert the neutral wire into terminal N. Connect the wires on RL: insert the load wire in one terminal of RL and the power wire in the other terminal of RL. Repeat the operation on the other RLs if you need to use more switches. If you have a ground wire, put insulating tape or a hooded terminal to insulate it and place it into the wall box.

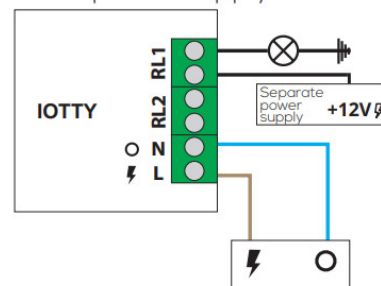
Electrical scheme for a load that operates at a different voltage from iotty device:



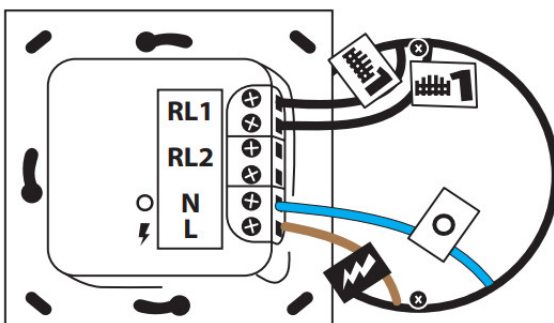
⚡ = Power

○ = Neutral

Main power supply 230 Vac



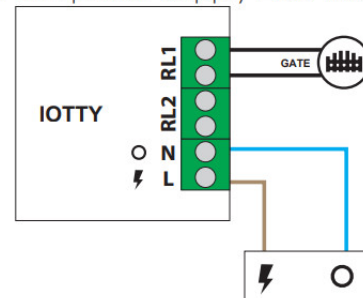
Electrical scheme for a load that needs a pulse to activate:



⚡ = Power

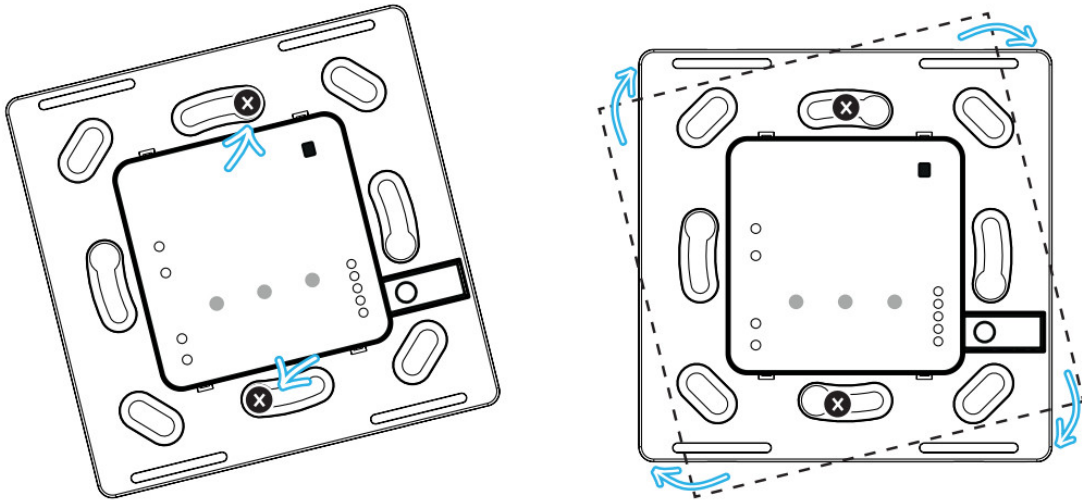
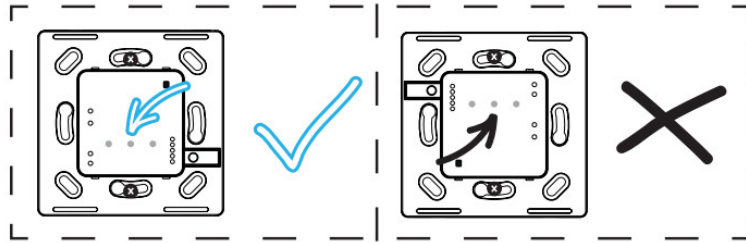
○ = Neutral

Main power supply 230 Vac



To set the switch properly, go to the iotty app, go to Device Settings and under "Switch Type" select "Pulse Switch".

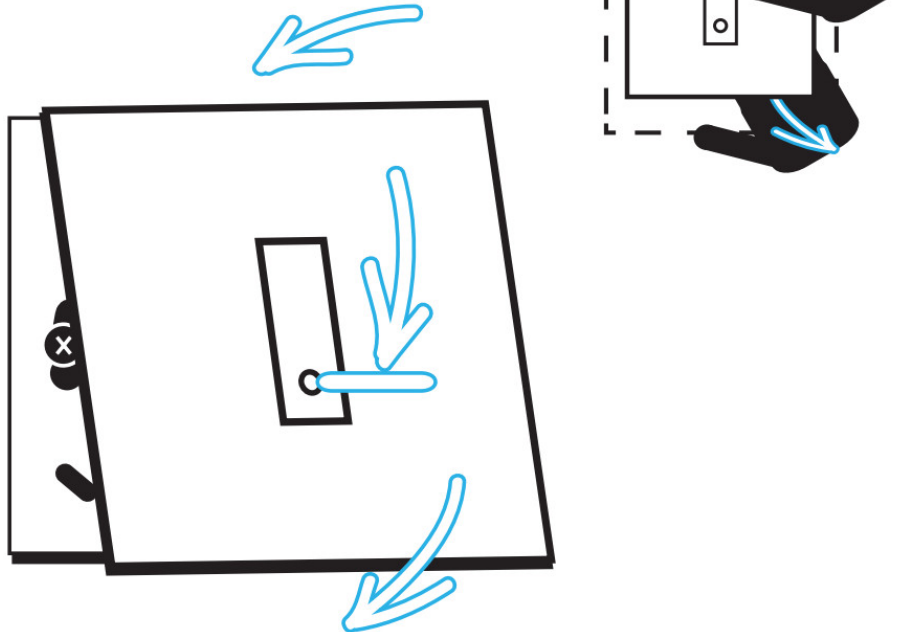
# 4



## Screw the iotty switch in

Push all the wires back into the wall box (do not push the wires using the back of the switch). Insert the device in the wall box and screw it in. Position the switch so that the AP and reset buttons are located on the left.

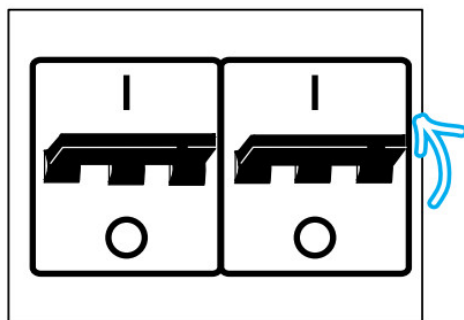
# 5



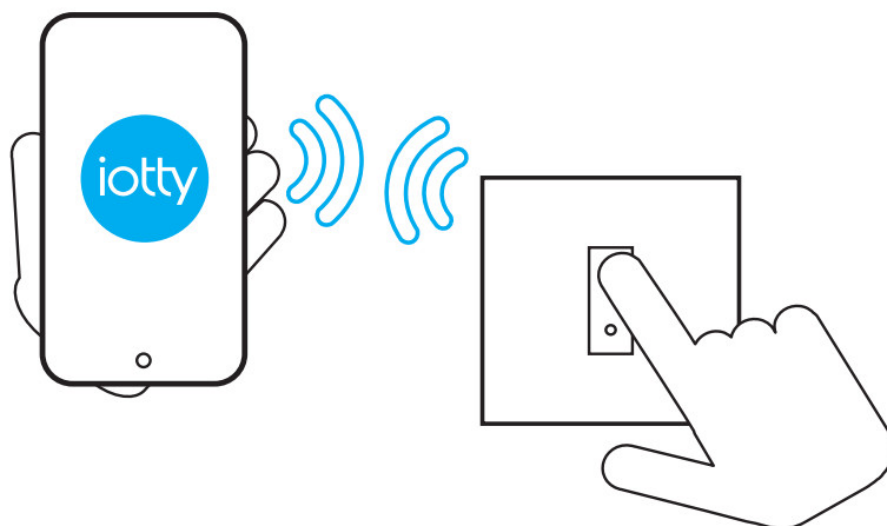
## Attach the glass faceplate

Attach the faceplate so that the little circle is located at the bottom.

# 6



<http://link.iotty.com/play-store>



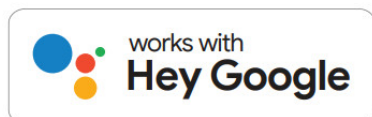
<http://link.iotty.com/app-store>



### Turn on the power and register device

Turn on the power at the circuit breaker. Check if the wiring was made correctly by tapping on the glass to turn on and off the light. Now the installation is complete and you can proceed to register the device.

iotty devices are compatible with the following integrations



If you need more information you can contact us at [support@iotty.com](mailto:support@iotty.com) or visit our FAQ section



<https://support.iotty.com/hc>

IOTTY srl  
Via Del Laghetto, 18/20

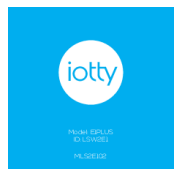
33080 Porcia (PN) – ITALY

[iotty@iotty.com](mailto:iotty@iotty.com)

[support@iotty.com](mailto:support@iotty.com)

---

## Documents / Resources



[iotty MLS2E102 Smart Wi-Fi Switch for Light and Gate](#) [pdf] Instruction Manual  
LSW2E1, MLS2E102, MLS2E102 Smart Wi-Fi Switch for Light and Gate, MLS2E102, Smart Wi  
-Fi Switch for Light and Gate, Switch for Light and Gate, Light and Gate, Gate

## References

- [iotty.com](https://iotty.com)
- [User Manual](#)

Manuals+.