



iotty E2SPLUS Smart Shades Switch User Manual

[Home](#) » [iotty](#) » iotty E2SPLUS Smart Shades Switch User Manual 

Contents

- [1 iotty E2SPLUS Smart Shades Switch](#)
- [2 Product Information](#)
- [3 Device overview](#)
- [4 Technical Specifications](#)
- [5 Important Notes](#)
- [6 Installation Steps](#)
- [7 App Integration](#)
- [8 Troubleshooting](#)
- [9 Documents / Resources](#)
 - [9.1 References](#)
- [10 Related Posts](#)



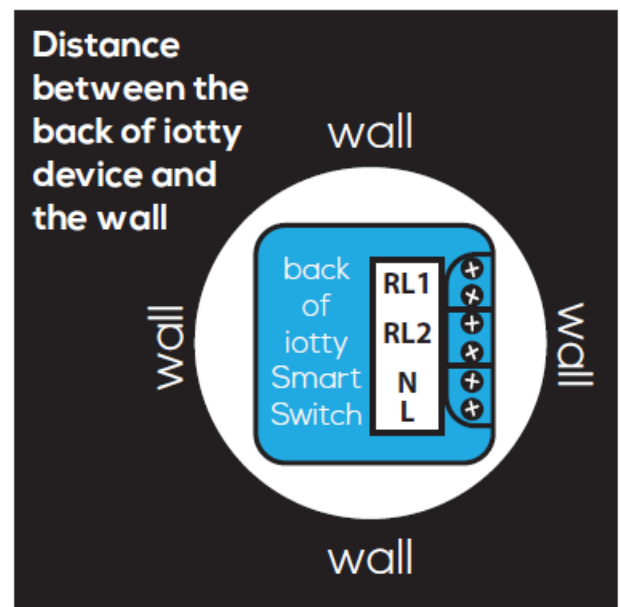
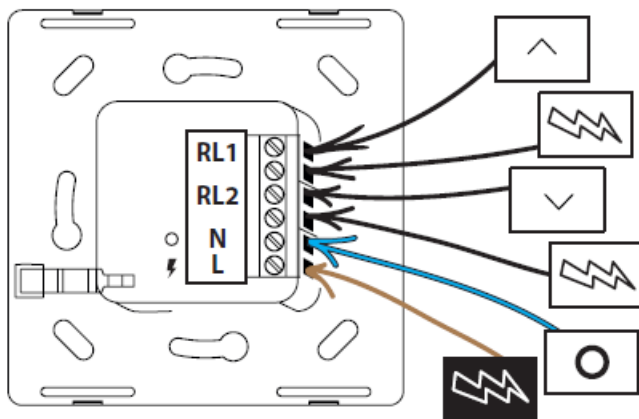
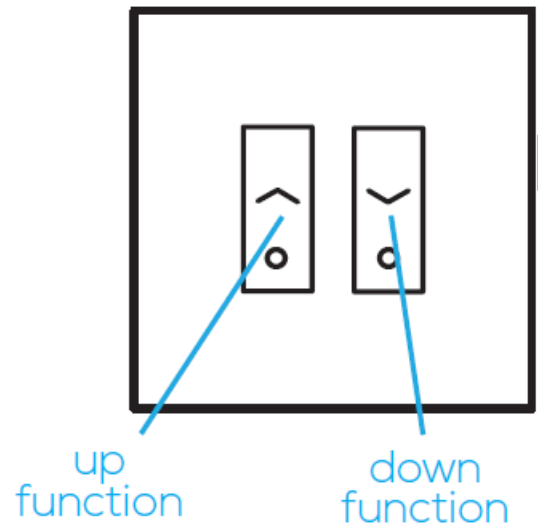
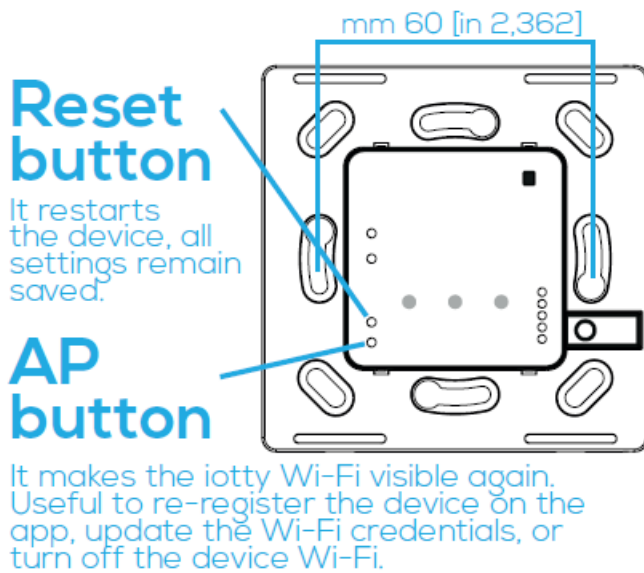
iotty E2SPLUS Smart Shades Switch



Product Information

The E2SPLUS Smart Shades Switch is designed to control rolling shutters, awnings, sunscreens or skylights with motors that have a maximum nominal consumption of 350W. It is an intelligent device that can be controlled via the iotty app and is compatible with Hey Google voice commands. This switch works only with the 2.4GHz Wi-Fi band and has a frequency range of 2412-2472MHz. It has a maximum RF output power of 17.29 dBm.

Device overview



Technical Specifications

- **Input:** 230 Vac
- **Frequency:** 50Hz
- **Max 5A per RL**
- **Cable size:** from 0.2mm² to 2.5mm²
- **Model:** E2SPLUS
- **ID:** LSW2E2S
- **Ambient temperature:** 25°C
- **Operating temperature:** from 0°C to 40°C Only works with 2.4GHz Wi-Fi band Frequency range: 2412-2472MHz
- **Maximum RF output power of the product:** 17.29 dBm
- **RF exposure information:** The Maximum Permissible Exposure (MPE) level is calculated based on a distance of d=20 cm between the device and the human body. To maintain compliance with the RF exposure requirement, a separation distance of 20 cm between the device and the human should be maintained.

Important Notes

Incorrect installation of this device can be dangerous or illegal. It is important to install it in accordance with all national and local codes. If you are not familiar or comfortable with electrical work, or if the wiring in your electrical box looks different from the pictures, it is recommended that you hire a professional electrician to install it for you. This device is for indoor use and dry location only.

Safety Precaution

Incorrect installation is dangerous or illegal. Install in accordance with all national and local codes. Hire a professional electrician if you are not familiar or not comfortable with electrical work, or if the wiring in your electrical box looks different from the pictures. For indoor use and dry location only.

Installation Precaution

Neutral wire required. Input L/N should be connected to a 16 A circuit breaker, and each way output should be connected to a 5 A circuit breaker before use.

Cable size: from 0.2mm² to 2.5mm² – select the cable size properly according to the load current.

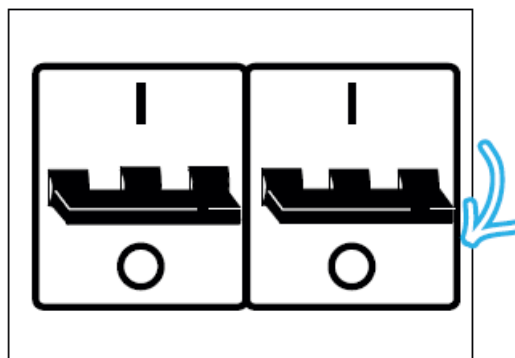
Supports

- Motors for rolling shutters, awnings, sunscreens or skylights.
- Motors with maximum nominal consumption 350W.

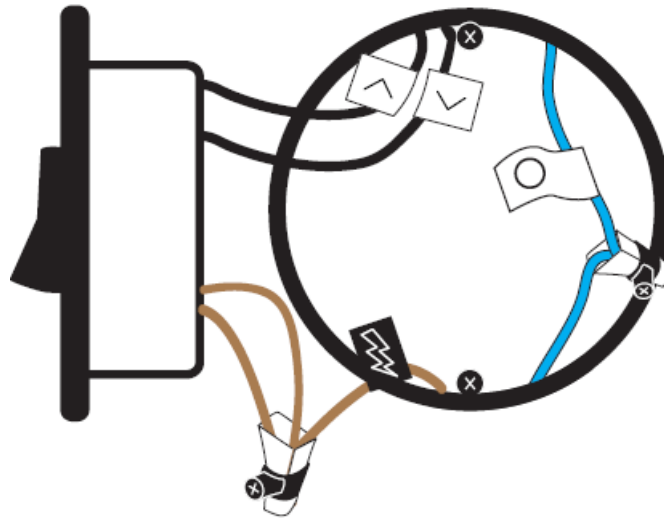
Installation Steps

- Turn off the power source.
- Connect the L/N input to a 16 A circuit breaker and each way output to a 5 A circuit breaker before use.
- Connect the neutral wire.
- Connect the phase or line to the main power supply (230 Vac).
- Connect the motor (M) to the switch.
- Attach the glass plate to the switch by inserting the small circle at the bottom of the glass into the switch and securing it in place.

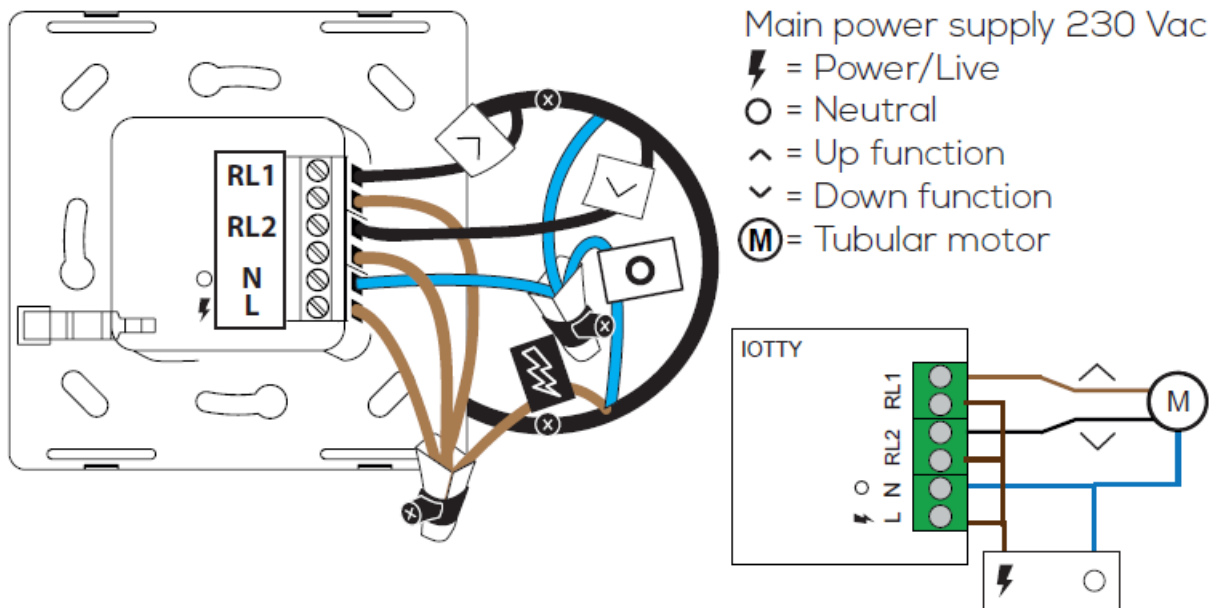
1. Turn off the power at the circuit breaker for the switch you are replacing.



2. Remove your old switch and label your wires. Remember that you must have neutral wire.

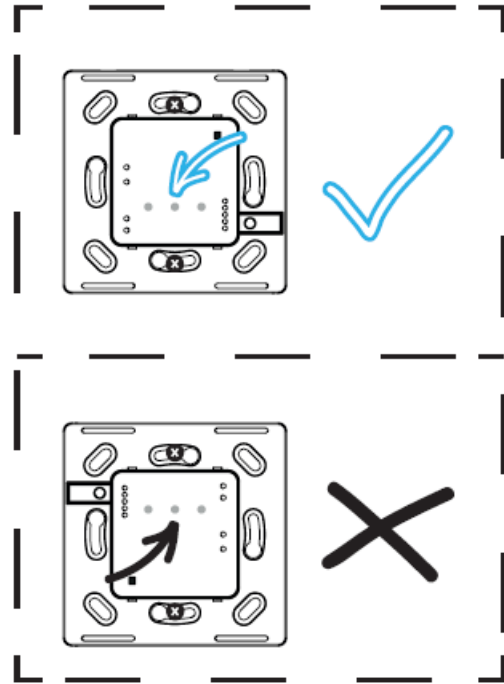
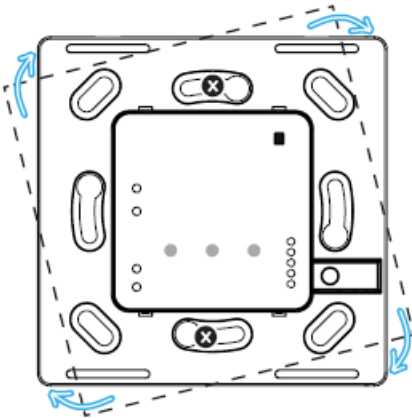
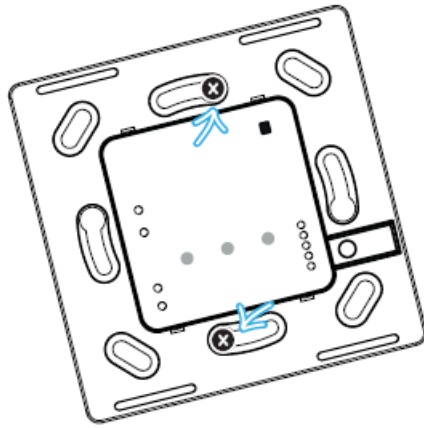


3. Wire the iotty plate



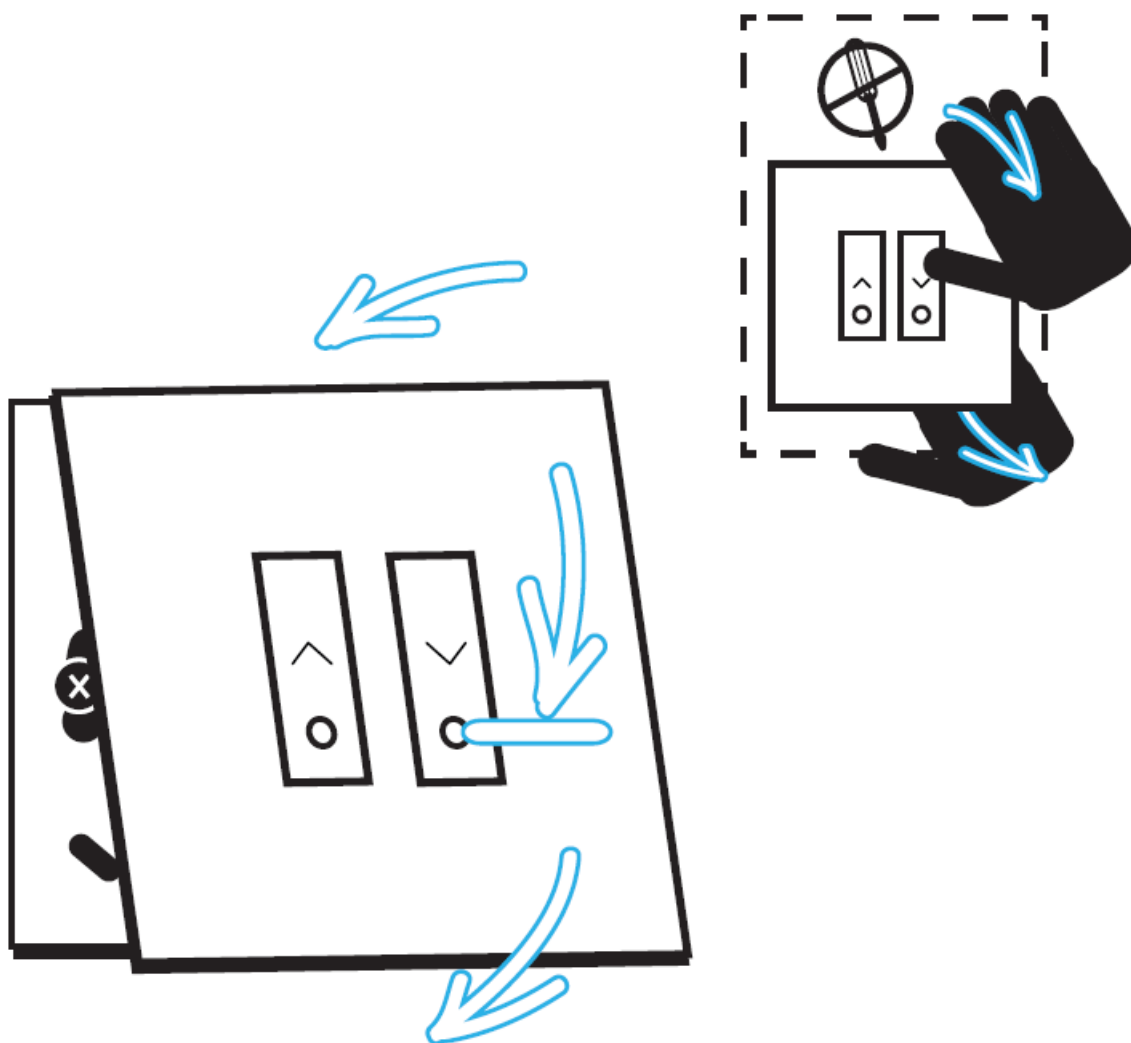
Insert the power wire into terminal L. Insert the neutral wire into terminal N. Connect the cables on RL1: plug the UP function cable into one terminal of RL1 and the power cable into the other terminal of RL1. Now RL2: plug the DOWN function cable into one terminal of RL2 and the power cable into the other terminal of RL2. If you have a ground wire, put insulating tape or a hooded terminal and place it into the wall box. Compare the wiring with the electrical scheme in the picture to be sure everything is in place.

4. Screw the iotty switch in



Push all the wires back into the wall box (do not push the wires using the back of the switch). Insert the device in the wall box and screw it in. Position the switch so that the AP and reset buttons are located on the left.

5. **Attach the glass faceplate**



Attach the faceplate so that the little circle is located at the bottom.

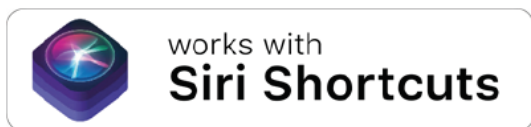
6. **Turn on the power and register device.**



Turn on the power at the circuit breaker. Check if the wiring was made correctly by tapping on the glass to activate the shade. Now the installation is complete and you can proceed to register the device.

App Integration

The iotty app can be downloaded from the App Store or Google Play. Once downloaded, follow the instructions to connect your Smart Shades Switch to your Wi-Fi network. The switch can now be controlled via the app and through voice commands with Hey Google. iotty devices are compatible with the following integrations.



If you need more information you can contact us at support@iotty.com or visit our FAQ section.



Troubleshooting

If you experience any issues with your Smart Shades Switch, refer to the troubleshooting section in the user manual or contact iotty support for assistance. Please note that this device is not intended for use with other types of motors or in locations where it may come into contact with water. In case of network error, try these steps in order:

- Restart the router and wait a few minutes to allow all devices to reconnect
OR, if the problem persists,
- With the palm of your hand, cover all the buttons and hold for a long time to restart the device
OR, if the problem persists,
- Remove the faceplate and push the AP button on the switch. Repeat device registration

Warranty

For warranty information visit us at link.iotty.com/warranty.


IOTTY srl

Via Del Laghetto, 18/20 33080 Porcia (PN) – ITALY

iotty@iotty.com

support@iotty.com

Documents / Resources

	iotty E2SPLUS Smart Shades Switch [pdf] User Manual E2SPLUS Smart Shades Switch, E2SPLUS, Smart Shades Switch, Shades Switch
---	---

References

-  iotty.com
-  iotty.com