



iotty E1PLUS WiFi Connected Smart Switch User Manual

[Home](#) » [iotty](#) » iotty E1PLUS WiFi Connected Smart Switch User Manual 

iotty E1PLUS WiFi Connected Smart Switch



Contents

- [1 Technical specifications](#)
- [2 Important notes](#)
- [3 Multi-way \(3-way via Wi-Fi\)](#)
- [4 Troubleshooting](#)
- [5 Warranty](#)
- [6 Device overview](#)
- [7 Installation steps](#)
- [8 integrations](#)
- [9 Customer Support](#)
- [10 Documents / Resources](#)
 - [10.1 References](#)
- [11 Related Posts](#)

Technical specifications

E1 PLUS Smart Switch

Model: E1PLUS

ID: LSW2E1

Input: 230 Vac

Frequency: 50Hz

Max 5A per RL

Ambient temperature: 25°C

Operating temperature: from 0°C to 40°C

Only works with **2.4GHz Wi-Fi band** Frequency range: 2412-2472MHz

Maximum RF output power of the product: 17.29 dBm

RF exposure information: The Maximum Permissible Exposure (MPE) level is calculated based on a distance of d=20 cm between the device and the human body. To maintain compliance with the RF exposure requirement, a separation distance of 20 cm between the device and the human should be maintained.

Important notes

Safety Precaution

Incorrect installation is dangerous or illegal. Install in accordance with all national and local codes.

Hire a professional electrician if you are not familiar or not comfortable with electrical work, or if the wiring in your electrical box looks different from the pictures.

For indoor use and dry location only.

Installation Precaution

Neutral wire required. Input L/N should be connected to a 16 A circuit breaker, and each way output should be connected to a 5 A circuit breaker before used.

Cable size: from 0.2mm² to 2.5mm² – select the cable size properly according to the load current.

Multi-way (3-way via Wi-Fi)

A 3-way switch allows you to control an electrical load (lamp) from 2 different locations.

Thanks to the Multi-way feature, you can connect multiple dotty switches together through the Wi-Fi network and take control of the same light.

For more details check: link.iotty.com/multi-way

Troubleshooting

In case of network error, try these steps in order:

- Restart the router and wait a few minutes to allow all devices to reconnect

OR, if the problem persists,

- With the palm of your hand, cover all the buttons and hold for a long time to restart the device

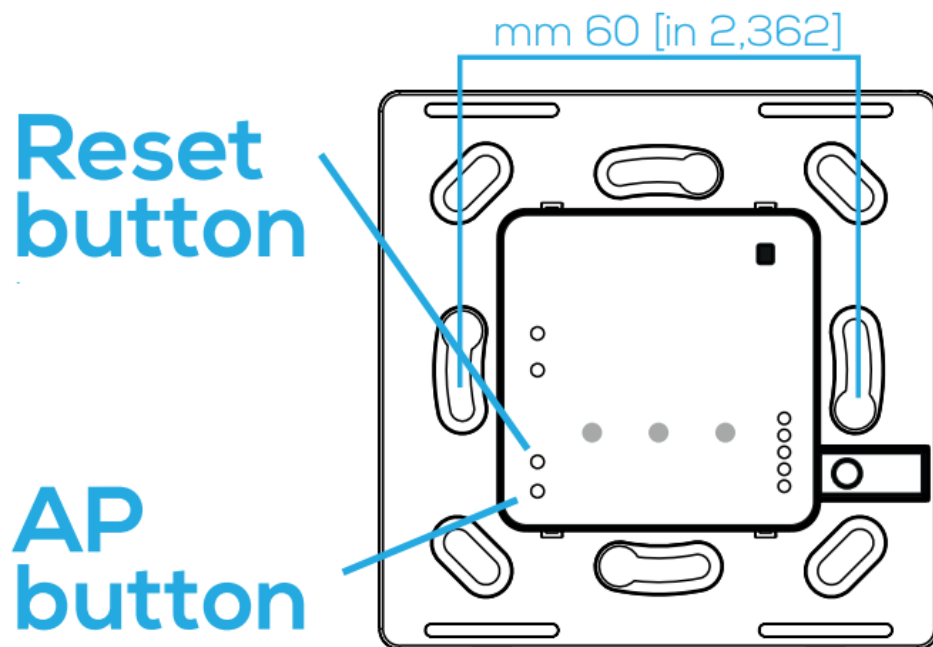
OR, if the problem persists,

- Remove the faceplate and push the AP button on the switch. Repeat device registration

Warranty

For warranty information visit us at [link.iotty.com/ warranty](https://link.iotty.com/warranty)

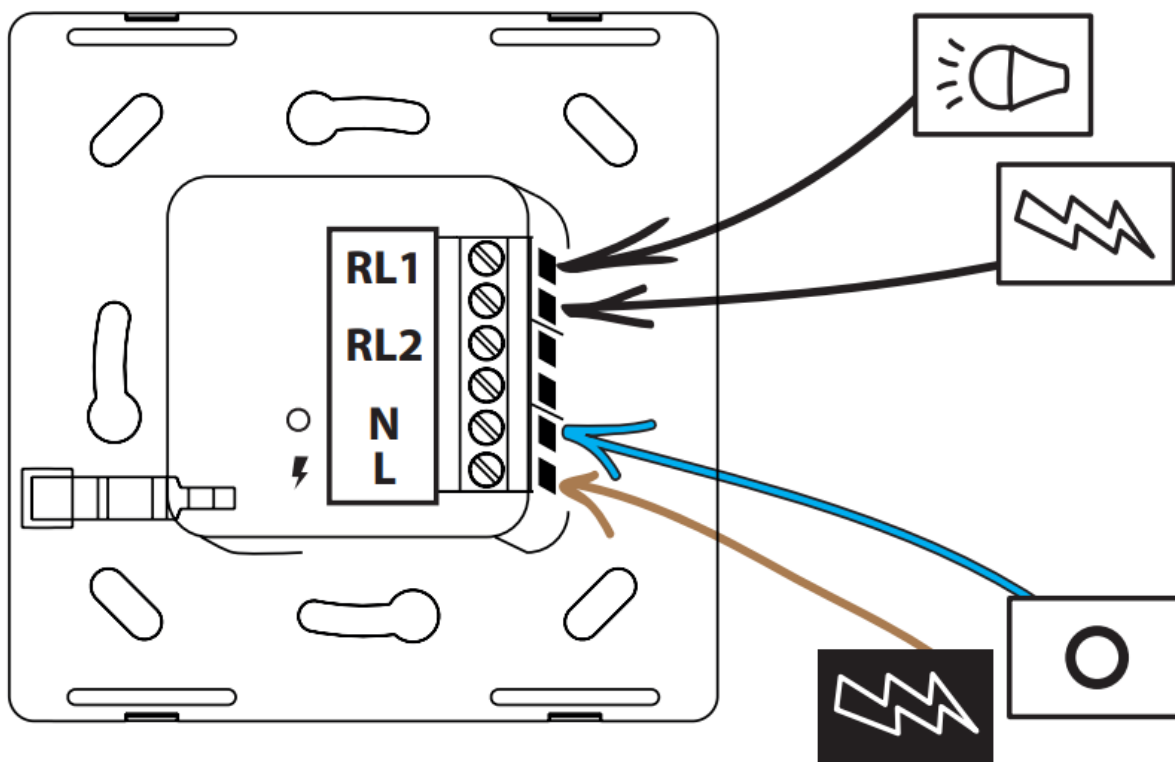
Device overview

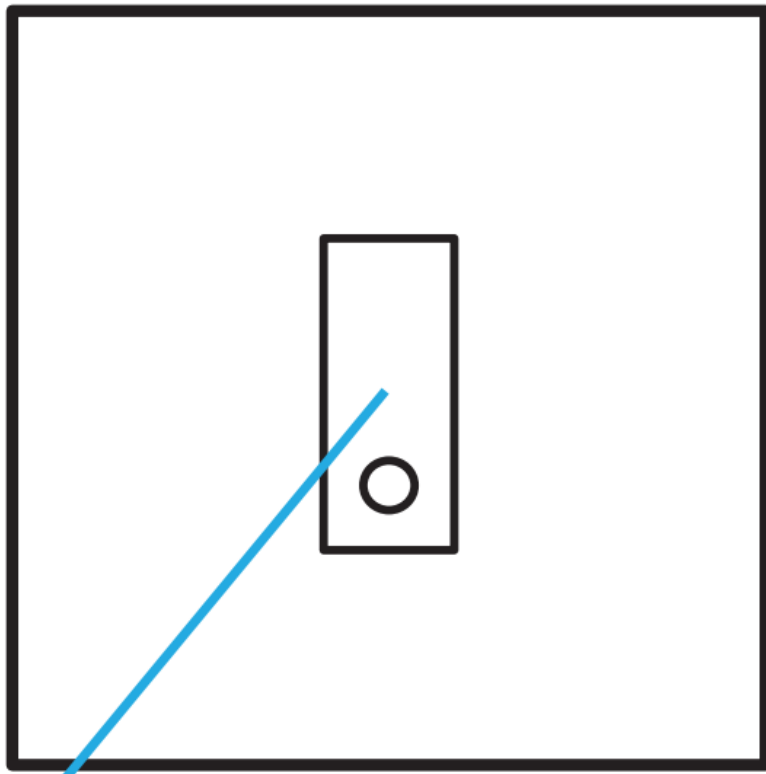


It restarts the device, all settings remain saved.

It makes the dotted Wi-Fi visible again.

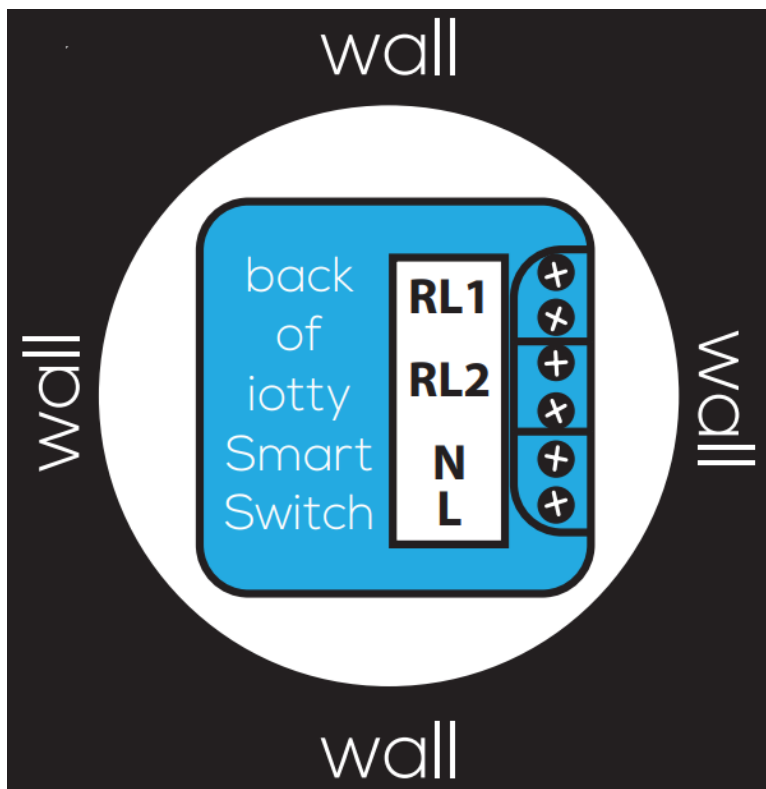
Useful to re-register the device on the app, update the Wi-Fi credentials, or turn off the device Wi-Fi.





Switch 1

5 mm (0.20 in) Distance between the back of dotty device and the wall



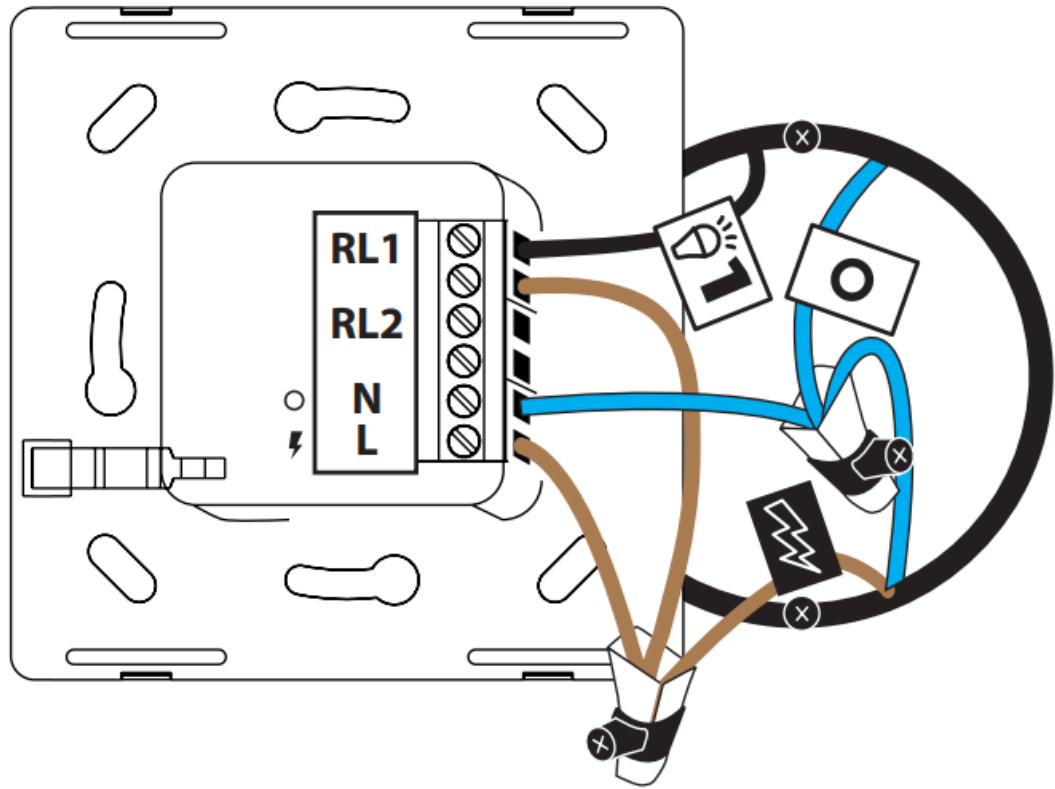
Installation steps

1. Turn off the power at the circuit breaker for the switch you are replacing.

-
- Diagram 2 illustrates a simplified circuit. A battery is connected to a circular loop. Inside the loop, there is a light bulb, a switch, and a lightning bolt symbol. A blue wire connects the switch to a terminal marked with an 'X'.

Insert the power wire into terminal L. Insert the neutral wire into terminal N. Connect the wires on RL: insert the load wire in one terminal of RL and the power wire in the other terminal of RL. Repeat the operation on the other RLs if you need to use more switches. If you have a ground wire, put insulating tape or a hooded terminal to insulate it and place it into the wall box.

3



Main power supply 230 Vac



= Live/power



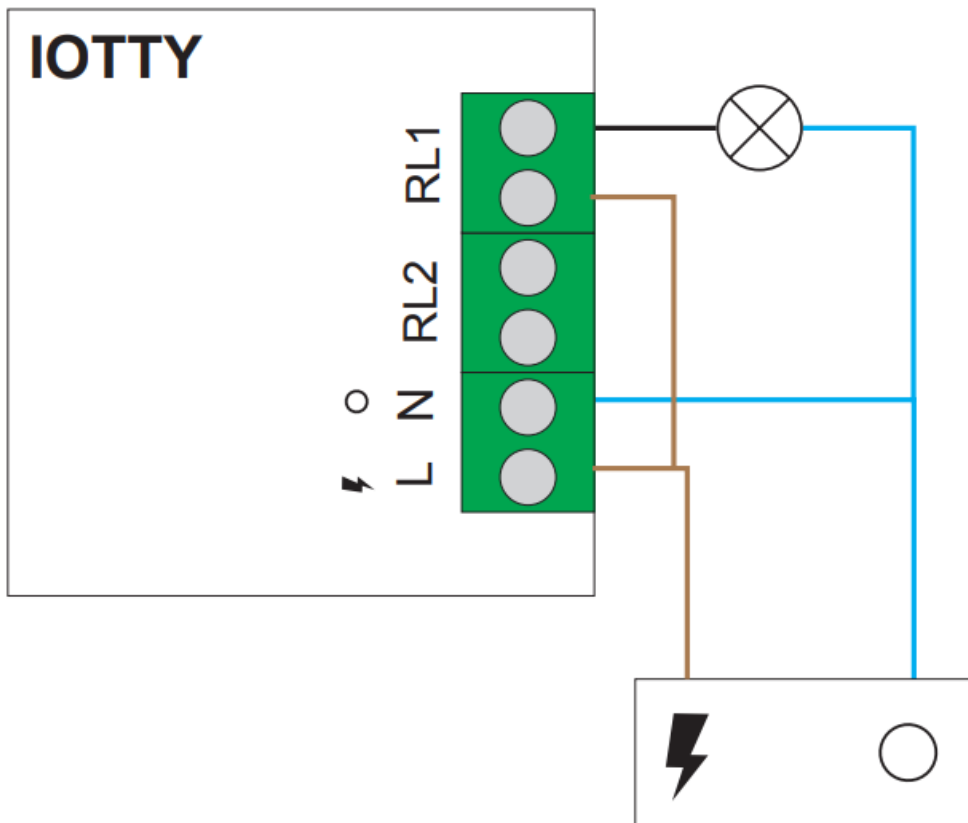
= Neutral



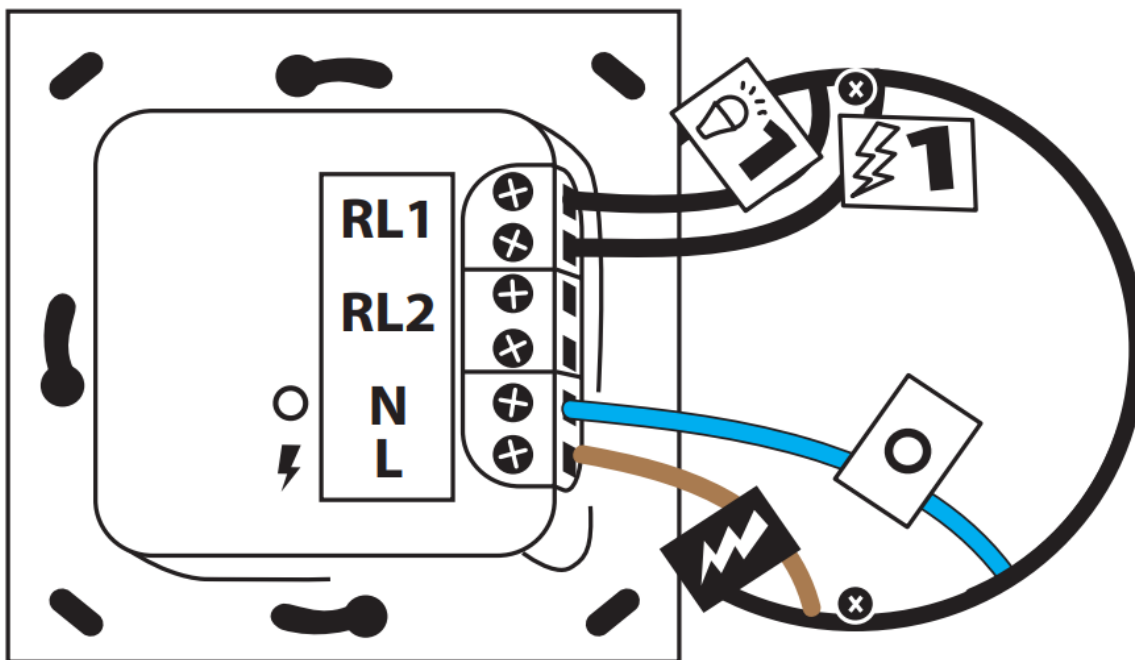
= Load/lamp



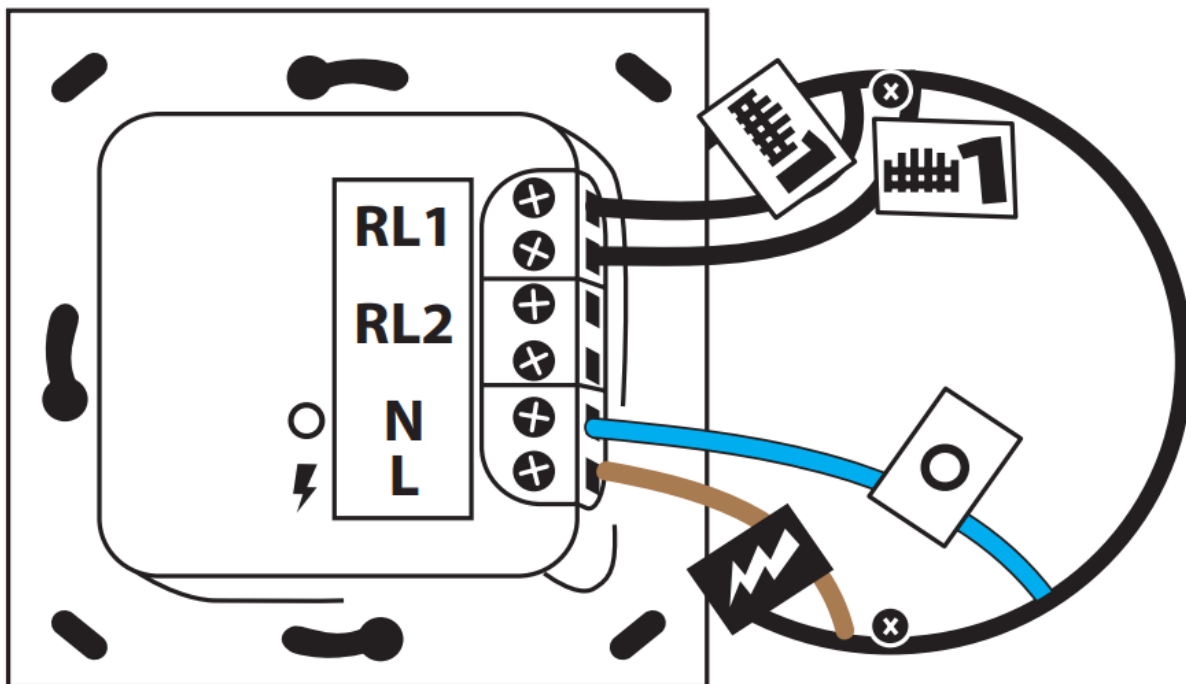
= Load/lamp



Electrical scheme for a load that operates at a different voltage from dotted device:



Electrical scheme for a load that needs a pulse to activate:

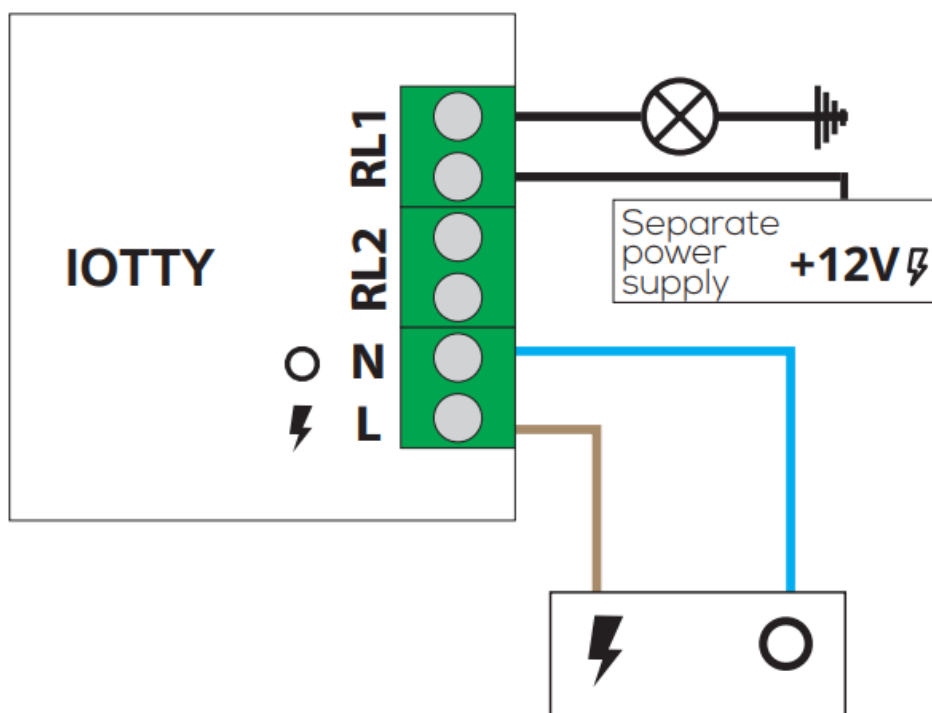


To set the switch properly, go to the dotty app, go to Device Settings and under “Switch Type” select “Pulse Switch”.

⚡ = Power

○ = Neutral

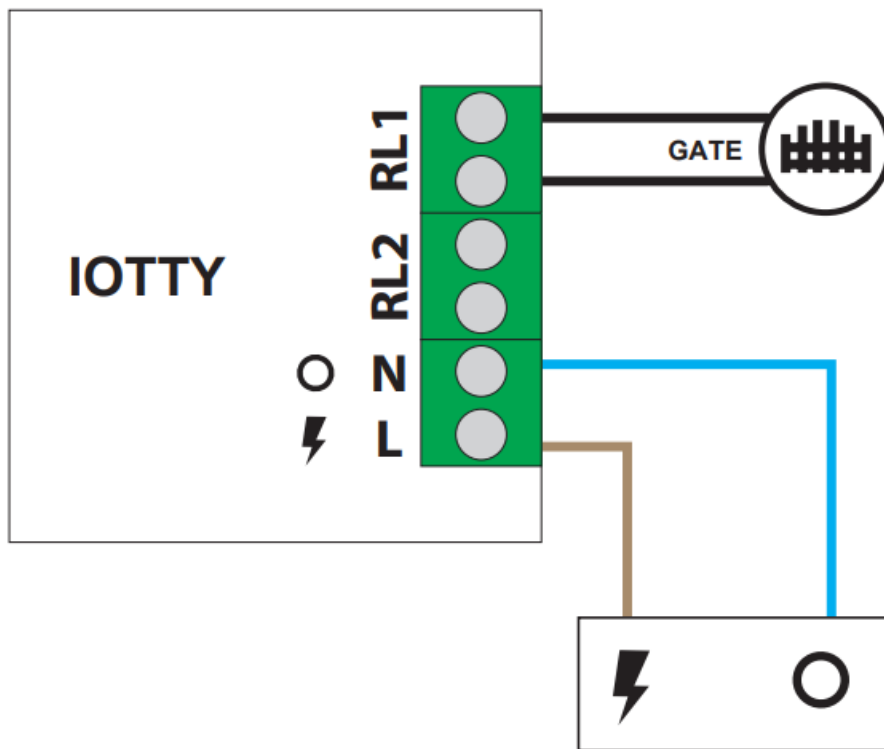
Main power supply 230 Vac



⚡ = Power

○ = Neutral

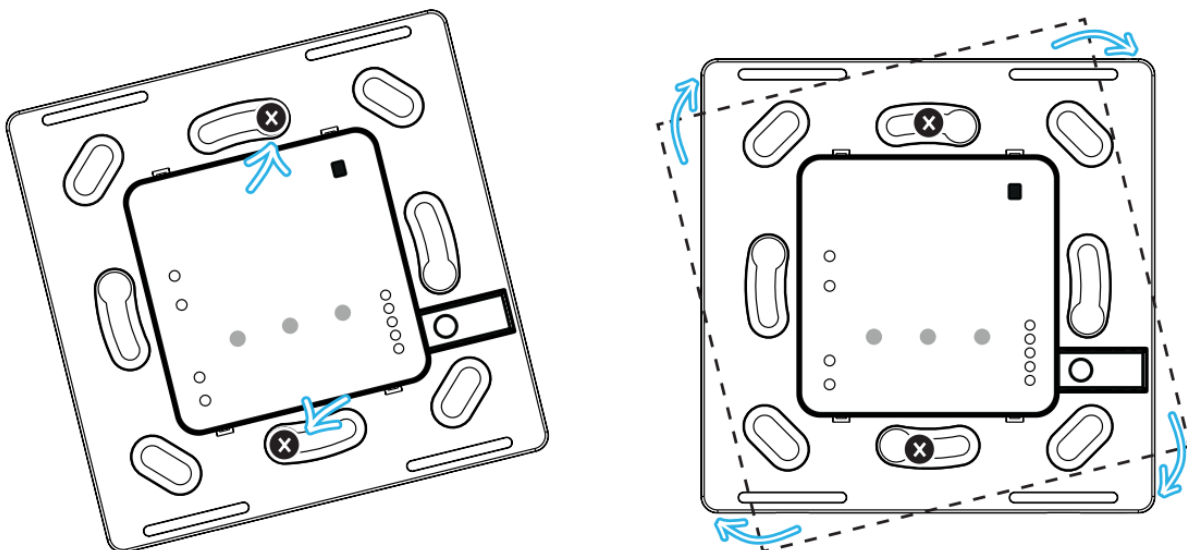
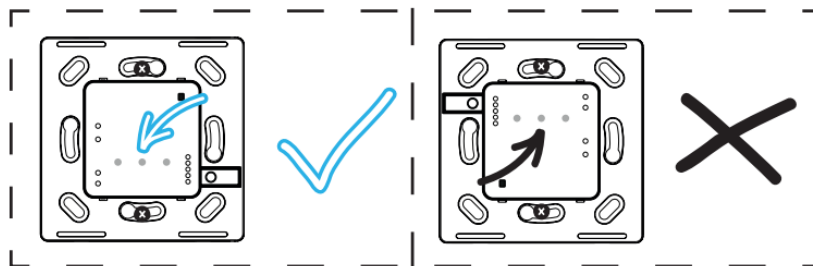
Main power supply 230 Vac



4. Screw the dotted switch in

Push all the wires back into the wall box (do not push the wires using the back of the switch). Insert the device in the wall box and screw it in. Position the switch so that the AP and reset buttons are located on the left.

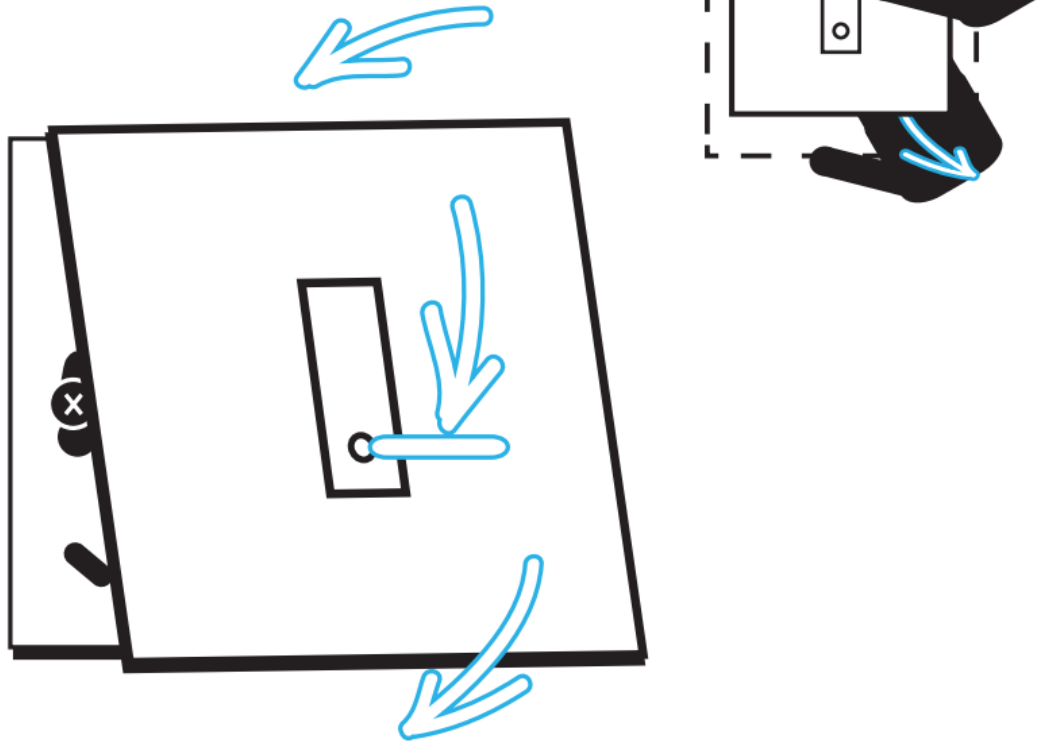
4



5. Attach the glass faceplate

Attach the faceplate so that the little circle is located at the bottom.

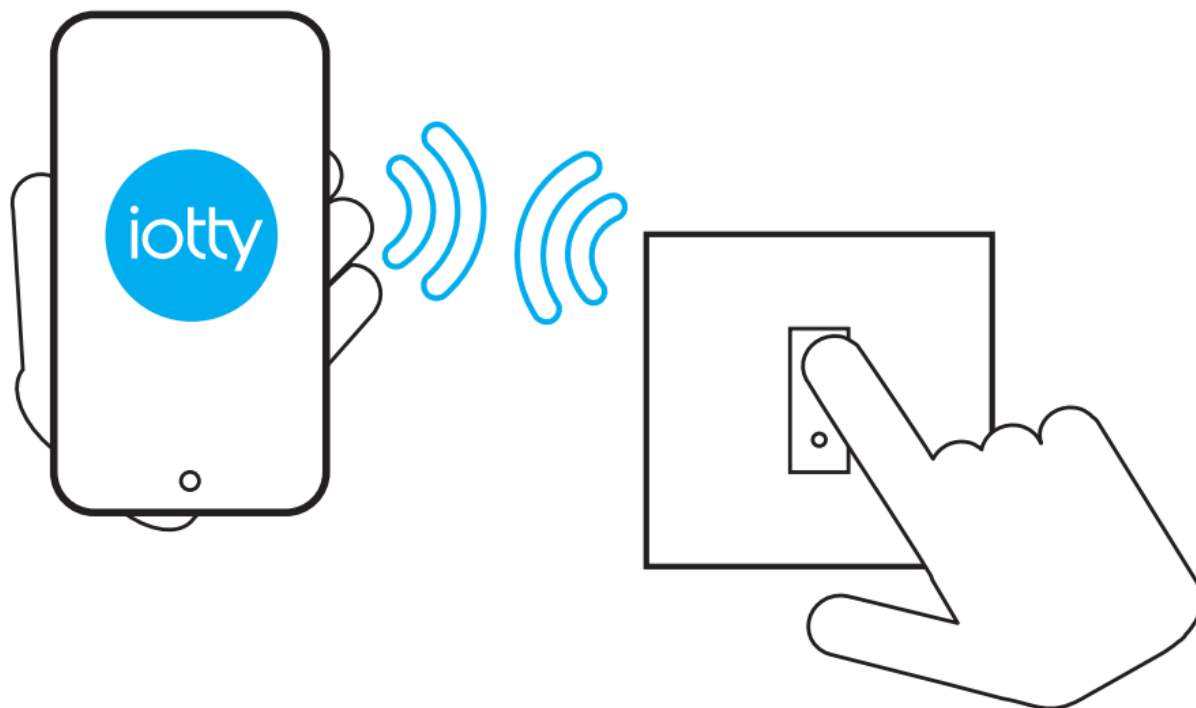
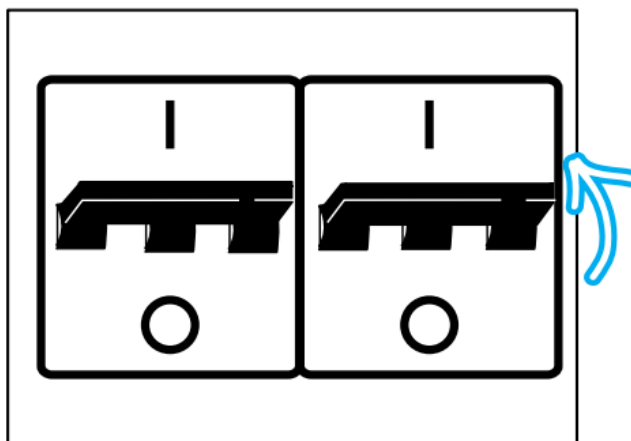
5



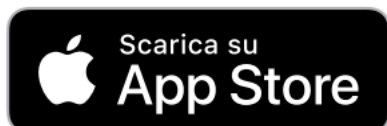
6. Turn on the power and register device

Turn on the power at the circuit breaker. Check if the wiring was made correctly by tapping on the glass to turn on and off the light. Now the installation is complete and you can proceed to register the device iotty devices are compatible with the following

6

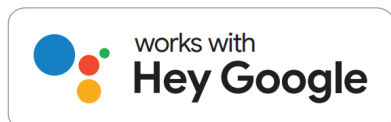


App





integrations



If you need more information you can contact us at support@iotty.com or visit our FAQ section

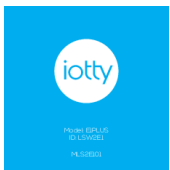


Customer Support

IOTTY sol
Via Del Larghetto, 18/20
33080 Porcha (PN) – ITALY
iotty@iotty.com
support@iotty.com



Documents / Resources



[iotty E1PLUS WiFi Connected Smart Switch](#) [pdf] User Manual
E1PLUS, LSW2E1, E1PLUS WiFi Connected Smart Switch, WiFi Connected Smart Switch,
Connected Smart Switch, Smart Switch

References

- [!\[\]\(9bf097d682561b2ffd12d57a40ca73b1_img.jpg\) iotty.com](https://www.iotty.com)
- [!\[\]\(51d3868eac81c232f6ef399d2bd16077_img.jpg\) iotty.com](https://www.iotty.com)
- [!\[\]\(a2c132b99b4fcf21fd2bcbbdcf2be642_img.jpg\) iotty.com](https://www.iotty.com)
- [User Manual](#)

[Manuals+](#), [Privacy Policy](#)

This website is an independent publication and is neither affiliated with nor endorsed by any of the trademark owners. The "Bluetooth®" word mark and logos are registered trademarks owned by Bluetooth SIG, Inc. The "Wi-Fi®" word mark and logos are registered trademarks owned by the Wi-Fi Alliance. Any use of these marks on this website does not imply any affiliation with or endorsement.