



IOGEAR GCS1932M 2 Port Display Port KVMP Switch with USB 3.0 Hub User Manual

[Home](#) » [logear](#) » IOGEAR GCS1932M 2 Port Display Port KVMP Switch with USB 3.0 Hub User Manual 

IOGEAR GCS1932M 2 Port Display Port KVMP Switch with USB 3.0 Hub



Contents

- [1 IMPORTANT INFORMATION](#)
- [2 Console Login – HyperTerminal](#)
- [3 Set baud rate](#)
- [4 Keyboard Language Layout](#)
- [5 Hotkey Settings](#)
- [6 Hotkey Switching](#)
- [7 Port Switching](#)
- [8 USB Reset](#)
- [9 Restore Default Settings](#)
- [10 Firmware Upgrade](#)
- [11 KVM Status](#)
- [12 Display Mode](#)
- [13 Documents / Resources](#)
 - [13.1 References](#)
- [14 Related Posts](#)

IMPORTANT INFORMATION

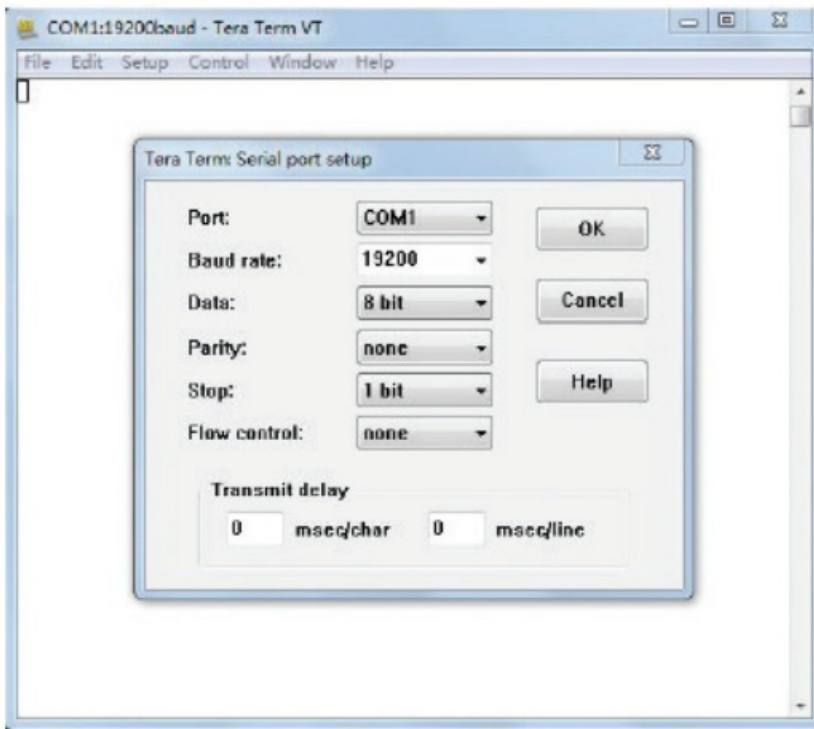
©2018 IOGEAR. All Rights Reserved. Part No. RS-232. IOGEAR, the IOGEAR logo is trademarks of IOGEAR. Microsoft and Windows are registered trademarks of Microsoft Corporation. IOGEAR makes no warranty of any kind with regards to the information presented in this document. All information furnished here is for informational purposes only and is subject to change without notice. IOGEAR. assumes no responsibility for any inaccuracies or errors that may appear in this document.

RS-232 Commands

Console Login – HyperTerminal

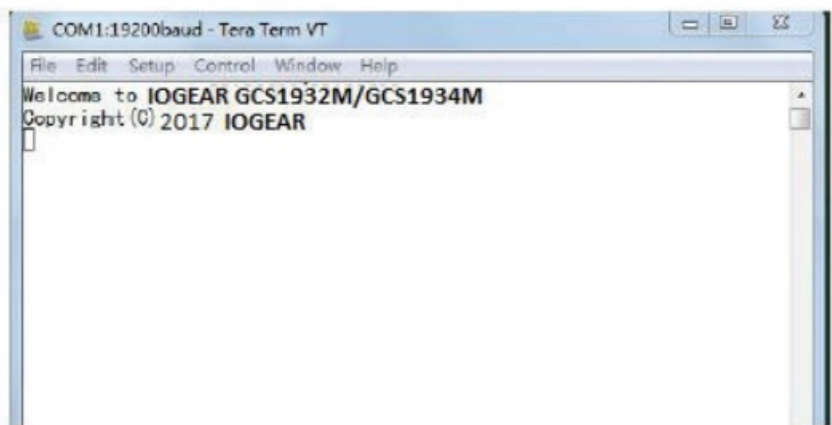
Once a physical connection from the computer to the GCS1932M/GCS1934M has been made, you can establish a HyperTerminal session using the instructions below.

1. Open the HyperTerminal application, type in “OPEN” and press enter.
2. Configure the port settings for the appropriate COM port number, then click OK.



Bits per Second: 19200, Data Bits: 8, Parity: None, Stop bits: 1, Flow Control: None.

3. When configured correctly a login prompt like the one below appears.



RS-232 Commands

After you login via HyperTerminal (see Console Login – HyperTerminal), you can use the instructions below to send RS-232 commands to control the GCS1932M/GCS1934M from a remote system.

When the RS-232 link is opened, the GCS1932M/GCS1934M will no longer accept commands from front panel buttons or most of hotkey functions (excluding mouse cursor shift and monitor layouts).

For more detailed instructions and information about each of the RS-232 commands listed below, please refer to the original GCS1932M/GCS1934M user manual.

Verification

After entering a command, a verification message appears at the end of the command line, as follows:

Response Message	Description
command OK	Command or parameter is correct.
command incorrect	Command or parameter is incorrect.

Set baud rate

The set baud rate command allows you to set baud rate to the computers connected to the GCS1932M/GCS1934M's ports. Use the Formula – to set Parameters – to create a Command.

Formula: Command + Input Command + [Enter] **Parameters:**

Command	Command
baud	Setup device baud rate

Input Command	Description
19200	baud command reserved keyword- 19200 baud rate (Default setting)
38400	baud command reserved keyword- 38400 baud rate
57600	baud command reserved keyword- 57600 baud rate
115200	baud command reserved keyword- 115200 baud rate

Enter	Description
Enter	Enter and send out command

Set Baud Rate Commands

Some available formulas for the Set Baud Rate commands are as follows: Command +N Input Command + [Enter]
To set the baud rate as 38400, type the following: **baud 38400 [Enter]** To set the baud rate as 115200, type the following: **baud 115200 [Enter]**

Note:

1. Each command string can be separated with a space.
2. The default baud rate is 19200.
3. The ASCII code for Enter is 0x0D0A.

Keyboard Language Layout

The Keyboard Language Layout command allows you to change the keyboard language layout. Use the **Formula** – to set **Parameters** – to create a **Command**.

Formula: Command + Input Command + [Enter]

Parameters:

Command	Description
layout	Change Keyboard Language Layout

Input Command	Description
en	Change the keyboard language layout to English (Default setting)
fr	Change the keyboard language layout to French
jp	Change the keyboard language layout to Japanese
ge	Change the keyboard language layout to German

Enter	Description
Enter	Enter and send out command

Keyboard Language Layout Commands

Some available formulas for Keyboard Language Layout commands are as follows: Command + Control + [Enter] To change the keyboard language layout to Japanese, type the following:

layout jp [Enter]

To change the keyboard language layout to French, type the following:

layout fr [Enter]

Note:

1. Each command string can be separated with a space.
2. The default language is English.
3. The ASCII code for Enter is 0x0D0A.

Hotkey Settings

The Hotkey Settings command allows you to enable/disable and change the hotkey used to invoke the HSM (Hotkey Settings Mode). Use the Formula -to set Parameters – to create a Command.

Formulas: Command + Input Command+ [Enter]

Parameters:

Command	Description
hotkey	Hotkey Settings Command

Input Command	Description
num	Change the HSM invoke key to: [Num Lock] + [-] (Default setting)
f12	Change the HSM invoke key to: [Ctrl] + [F12]

Enter	Description
Enter	Enter and send out command

Hotkey Settings Commands

Some available formulas for Hotkey Settings commands are as follows: Command + Input Command + [Enter] To change the HSM invoke key to [Num Lock] + [-], type the following:

hotkey num [Enter]

To change the HSM invoke key to [Ctrl] + [F12], type the following:

hotkey f12 [Enter]

Note:

1. Each command string can be separated with a space.
2. The default hotkey is num.
3. The ASCII code for Enter is 0x0D0A.

Hotkey Switching

The Hotkey Switching command allows you to change the hotkey switching mode. Use the **Formula** – to set **Parameters** – to create a **Command**.

Formulas: Command + Input Command + [Enter]

Parameters:

Command	Description
switch	Hotkey switching command

Input Command	Description
Scroll	Change hotkey switching mode to: [Scroll][Scroll]
ctrl	Change hotkey switching mode to: [Ctrl][Ctrl]

Enter	Description
Enter	Enter and send out command

Hotkey Switching Commands

Some available formulas for Hotkey Switching commands are as follows: Command + Control + [Enter] **To change the hotkey switching mode to [Scroll] + [Scroll], type the following:**

switch scroll [Enter]

To change the hotkey switching mode to [Ctrl] + [Ctrl], type the following:

switch ctrl [Enter] Note:

1. Each command string can be separated with a space.
2. The default hotkey switching setting is scroll.
3. The ASCII code for Enter is 0x0D0A.

Port Switching

The Port Switching command allows you to change from one port to another.

Formulas: Command + Input Command + [Enter]

Parameters:

Command	Description
sw	Switching Command

Input Command	Description
ixx	Input Port number xx=01-04

Enter	Description
Enter	Enter and send out command

For Example: Switching to port 2 type in **swi02** [Enter]

Note:

1. Each command string can be separated with a space.
2. The default USB reset setting is off.
3. The ASCII code for Enter is 0x0D0A.

USB Reset

The USB Reset command allows you to reset the USB connection. Use the **Formula** – to set **Parameters** – to create a **Command**.

Formulas:

Command + Input Command + [Enter] **Parameters:**

Command	Description
usbreset	USB Reset Command

Input Command	Description
on	Enable USB reset connection

Enter	Description
Enter	Enter and send out command

USB Reset Command

The available formula for the USB Reset command is as follows: Command + Input Command + [Enter] **For example, to reset the USB connection, type the following:**
usbreset on [Enter]

Note:

1. Each command string can be separated with a space.
2. The default USB reset setting is off.
3. The ASCII code for Enter is 0x0D0A.

Restore Default Settings

The Restore Default Settings command allows you to reset all of the GCS1932M/ GCS1934M's settings back to the default. Use the **Formula** – to set **Parameters** – to create a **Command**.

Formulas: Command + Input Command + [Enter]

Parameters:

Command	Description
reset	Restore KVM Default Settings

Command	Description
reset	Restore KVM Default Settings

Enter	Description
Enter	Enter and send out command

Restore Default Settings Command

The available formula for the Restore Default Settings command is as follows: Command + Input Command + [Enter] **For example, to restore all GCS1932M/GCS1934M settings back to the default, type the following:** reset on [Enter] **Note:**

1. Each command string can be separated with a space.
2. The default setting is off.
3. The ASCII code for Enter is 0x0D0A.

Firmware Upgrade

The Firmware Upgrade command allows you to enable the firmware upgrade mode. Use the Formula – to set Parameters – to create a Command.

Formulas:

Command + Input Command + [Enter] **Parameters:**

Command	Description
upgrade	Firmware Upgrade Command

Input Command	Description
on	Enable Firmware Upgrade Mode

Enter	Description
Enter	Enter and send out command

Firmware Upgrade Command

The available formula for the Firmware Upgrade command is as follows: Command + Input Command + [Enter] **For example, to enable firmware upgrade mode, type the following:** upgrade [Enter] **Note:**

1. Each command string can be separated with a space.
2. The default setting is off.
3. The ASCII code for Enter is 0x0D0A.

KVM Status

The KVM Status command allows you to display read-only information about the GCS1932M/GCS1934M's current KVM status.

Use the **Formula** – to set **Parameters** – to create a **Command**.

Formulas:

Command + Input Command + [Enter] **Parameters:**

Command	Description
status	Display KVM Status Command

Input Command	Description
on	Enable KVM Status

Enter	Description
Enter	Enter and send out command

KVM Status Command

The available formula for the KVM Status command is as follows: Command + Input Command + [Enter] **For example, to display the GCS1932M/GCS1934M's KVM status, type the following:** status [Enter]

A message similar to the one below will then appear:

hotkey: [numlock]+[-] / [scrolllock], [scrolllock] **os setting:** pc

keyboard emulation: enabled/disabled keyboard layout: English

mouse emulation: enabled/disabled monitor re-detection: enabled/disabled

Note:

1. Each command string can be separated with a space.
2. The default setting is off.
3. The ASCII code for Enter is 0x0D0A.

Display Mode

The Monitor display command allows you to configure the monitor display mode to be SST mode or MST mode. Use the **Formula** – to set **Parameters** – to create a **Command**.

Formulas:

Command + Input Command + [Enter] **Parameters:**

Command	Description
display	Configure the Monitor display mode Command

Input Command	Description
sst	sst means the both monitors are in sst mode(mirror mode).
mst	mst means the both monitors are in mst mode(multi-stream mode).

Enter	Description
Enter	Enter and send out command

Display mode Command

The available formula for the display mode command is as follows: Command + Input Command + [Enter]
For example, to configure SST mode, type the following: display sst [Enter] **For example, to configure MST mode, type the following:** display mst [Enter]

Note:

1. Each command string can be separated with a space.
2. The ASCII code for Enter is 0x0D0A.



Documents / Resources



[IOGEAR GCS1932M 2 Port Display Port KVMP Switch with USB 3.0 Hub](#) [pdf] User Manual
GCS1932M 2 Port Display Port KVMP Switch with USB 3.0 Hub, GCS1932M, 2 Port Display Po
rt KVMP Switch with USB 3.0 Hub, Display Port KVMP Switch with USB 3.0 Hub, Port KVMP S
witch with USB 3.0 Hub, Switch with USB 3.0 Hub, USB 3.0 Hub

References

- [IOGEAR :: HDMI Switch, PC to TV, Wireless Audio Video, KVM Switch, KVM, USB Switch, Video Splitter, Video Switch, KVM DVI, LCD KVM, Rackmount KVM](#)
- [User Manual](#)

[Manuals+](#), [Privacy Policy](#)

This website is an independent publication and is neither affiliated with nor endorsed by any of the trademark owners. The "Bluetooth®" word mark and logos are registered trademarks owned by Bluetooth SIG, Inc. The "Wi-Fi®" word mark and logos are registered trademarks owned by the Wi-Fi Alliance. Any use of these marks on this website does not imply any affiliation with or endorsement.