

InVidTech Vision Preview View on logout Instructions

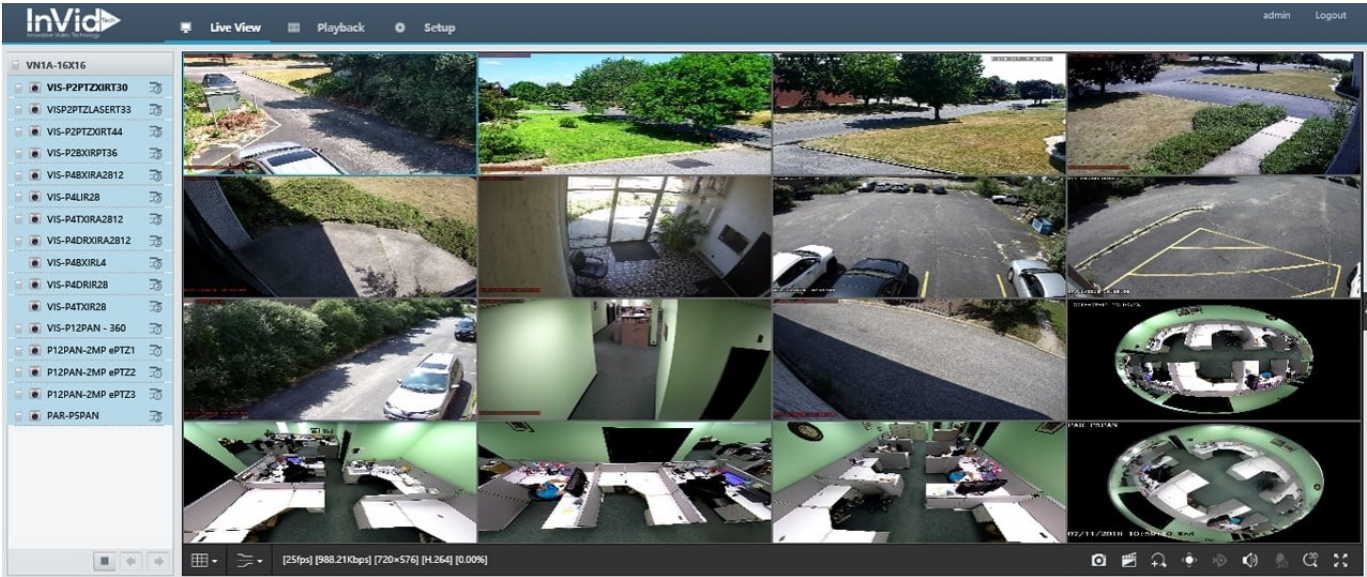
[Home](#) » [InVidTech](#) » InVidTech Vision Preview View on logout Instructions 

Contents

- 1 InVidTech Vision Preview View on logout Instructions
- 2 Vision Preview View on logout
- 3 Documents / Resources
- 4 Related Posts



InVidTech Vision Preview View on logout Instructions

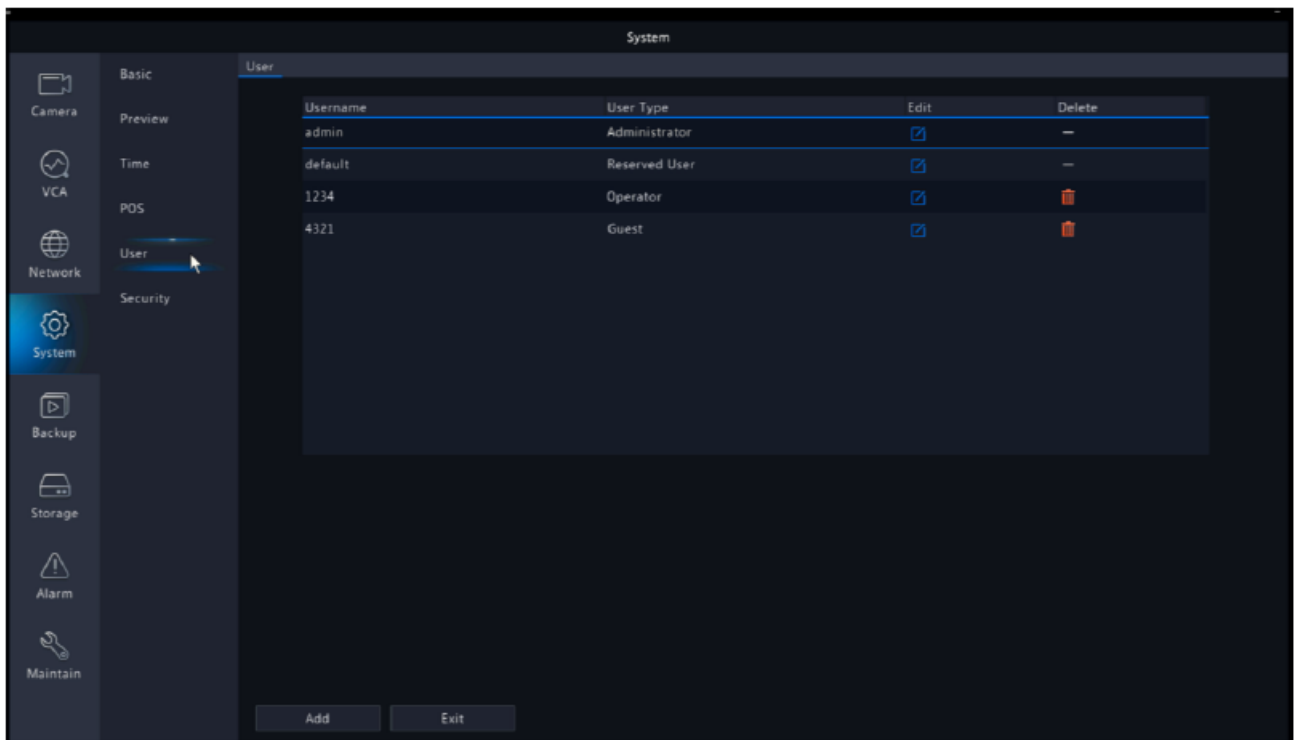


Vision Preview View on logout

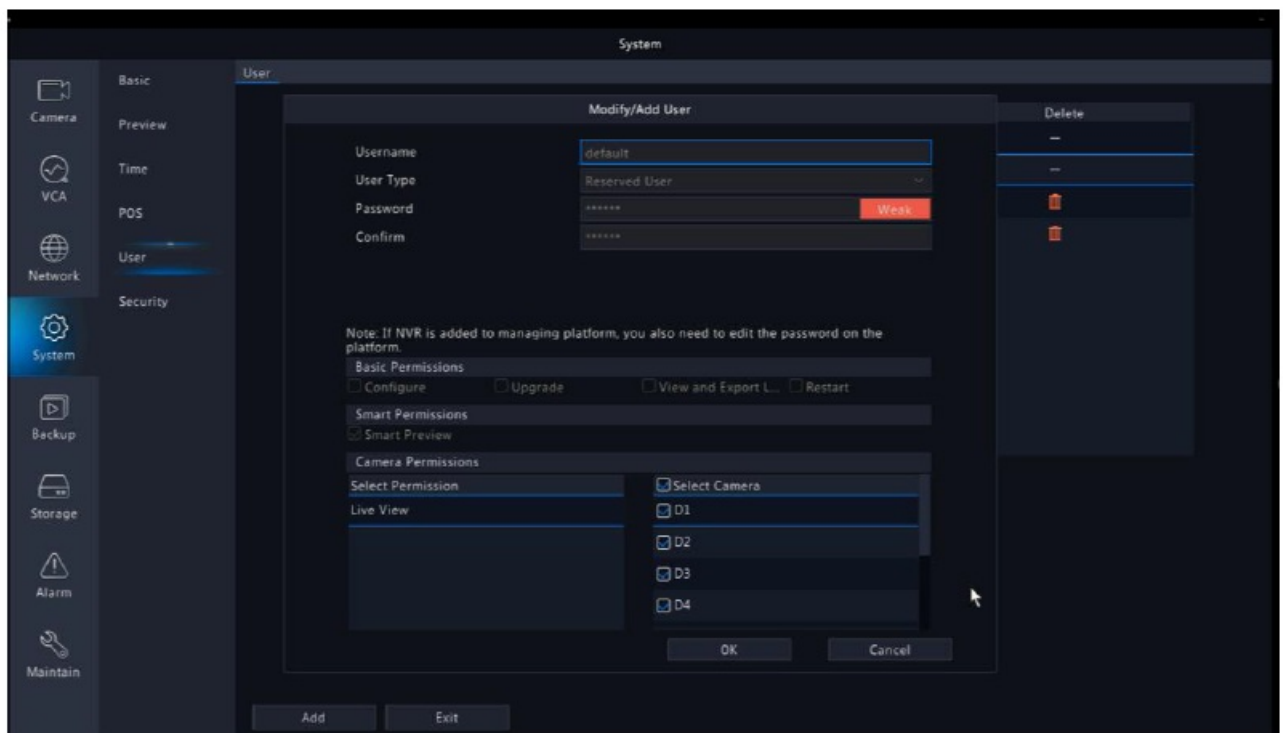
By default, the Vision recorder has all channels enabled for viewing when the unit is logged out locally, you can change that by showing none or a select few, by following the steps below.

Note, must setup sing local monitor

1. Log into the local recorder, right click and choose “Menu” then click on “System/User”



2. Then click on the pencil and paper icon on the “Default” user (you must use the admin password to access), then under “Live View” you can check or uncheck what cameras you would like to display.



Please Note: you must use the Default user; this is what it defaults to when the unit logs out.

Documents / Resources



[InVidTech Vision Preview View on logout](#) [pdf] Instructions

Vision Preview View on logout, Preview View on logout, Vision View on logout, View on logout, Vision Preview View, Preview View