



## INVENTUM IPF650R Plasmafilter User Manual

[Home](#) » [INVENTUM](#) » INVENTUM IPF650R Plasmafilter User Manual 

### Contents

- [1 INVENTUM IPF650R Plasmafilter](#)
- [2 Introduction](#)
- [3 Safety](#)
- [4 Description](#)
- [5 Installation](#)
- [6 Operation](#)
- [7 Technical data](#)
- [8 General terms and conditions of service and warranty](#)
- [9 Documents / Resources](#)
  - [9.1 References](#)
- [10 Related Posts](#)

# INVENTUM

**INVENTUM IPF650R Plasmafilter**






## **Introduction**

### **HOW TO USE THIS DOCUMENT**

1. Read this document completely. Make sure that you know and understand all the instructions.
2. Obey the safety instructions to prevent injury and/or damage to the appliance and its surroundings.
3. Do the procedures completely and in the given sequence.
4. Keep this document in a safe area for future use. This document is a part of the appliance.

### **SYMBOLS USED IN THIS DOCUMENT**

Safety symbol	Function	Description
	Warning	“Warning” means that injury or death is possible if you do not obey the instructions.
	Caution	“Caution” means that damage to the appliance is possible if you do not obey the instructions.
	Note	“Note” is used to give additional information.

## Safety

### GENERAL SAFETY INSTRUCTIONS

- Fully read the instruction manual.
- Carefully store the instruction manual for future reference.
- Only use this filter for the purposes described in the instruction manual.
- If the safety instructions and warnings are not observed, the manufacturer cannot be held liable for any resulting damage.
- Damage as a result of incorrect connection, incorrect fitting or incorrect use does not fall under the warranty.

### SAFETY INSTRUCTIONS FOR INSTALLATION

- Make sure that the filter is disconnected from the mains supply during installation. There is a risk of electric shock.
- Do not install the filter in case of damage.
- Do not put any objects into the filter.
- Only use the mains adapter that is delivered with the filter.
- Follow the installation instructions to prevent damage. If you do not follow the instructions the warranty will be void.
- Make sure that you install the filter close to the mains socket.

### SAFETY INSTRUCTIONS FOR OPERATION

- Only use the filter in combination with an extractor hood that has a grease filter with fire-retardant properties.

- Make sure that there is sufficient ventilation.
- Do not touch the filter with wet hands. There is a risk of electric shock.
- Do not block the inlet or outlet of the filter.
- Do not use the filter in case of damage.
- The appliance can be used by children of 8 years and older and persons with a limited physical, sensory or mental capacity or lack of experience or knowledge, provided they use the appliance under supervision or have been instructed about its safe use and understand the hazards involved.
- Children are not allowed to play with the appliance.
- The appliance may not be cleaned or maintained by children, unless this is done under supervision.
- Do not use the filter in a commercial environment.
- Do not use the filter to remove chemical gases (such as carbon monoxide).
- Make sure that the mains plug is freely accessible after installation of the module. The integrated mains cable cannot and must not be replaced.
- Do not allow high flames to develop under the extractor hood. Do not flambé under extractor hoods. Both can lead to a fire hazard and cause considerable consequential damage.
- Potential small black spherical particles in the packaging may have originated from the high-performance carbon filter and released during transport. These particles are harmless and can be disposed of with domestic waste. Do not use these particles for consumption. The functionality of the filter will not be affected.

## **ENVIRONMENTALLY-FRIENDLY DISPOSAL**

### ***Note***

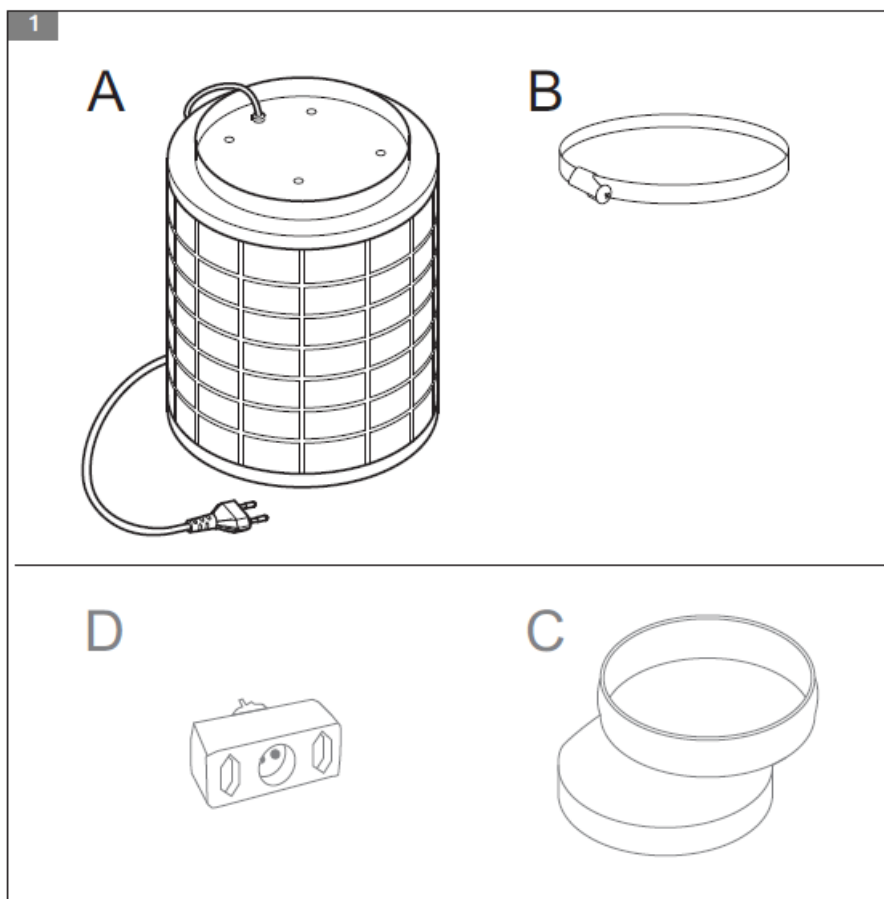
- Recycling – WEEE
- Dispose of packaging in an environmentally-friendly manner.
- This appliance is labelled in accordance with European Directive 2012/19/EU concerning used electrical and electronic appliances (waste electrical and electronic equipment – WEEE). The guideline determines the framework for the return and recycling of used appliances as applicable throughout the EU.

## **Description**

### **INTENDED USE**

- The filter is intended to be used for filtering the air.
- Do not use the filter for any other purpose than described in this document.

## **PLASMA FILTER**



- **A** Plasma filter
- **B** Hose clamp
- **C** Adaptor (sold separately)
- **D** Mains adaptor (sold separately)

**Note:** The accessories C and D can be ordered via the website: [www.inventum.eu](http://www.inventum.eu)

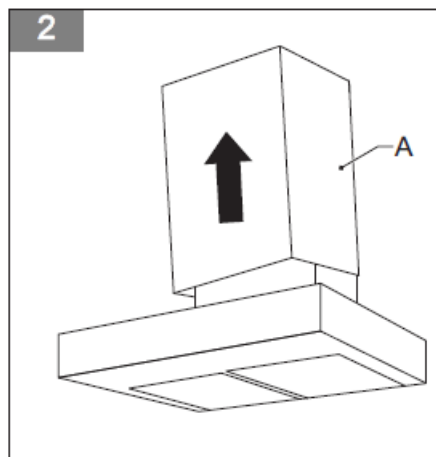
## Installation

### INSTALLING THE FILTER

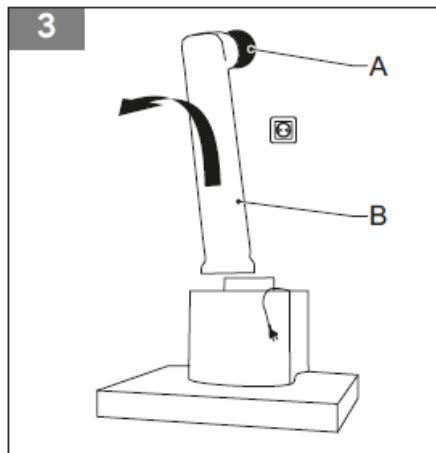
**Note:** The filter is installed directly on the motor of the extractor hood.

### Preparing the extractor hood

1. Disconnect the extractor hood from the mains supply.



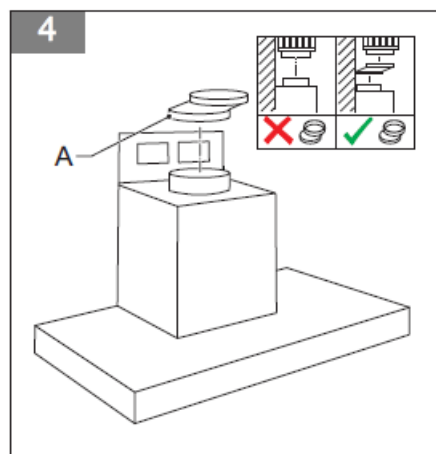
2. Remove the shaft (A) of the extractor hood (extraction) or remove the carbon filter (recirculation).



3. Remove the exhaust hose (B).

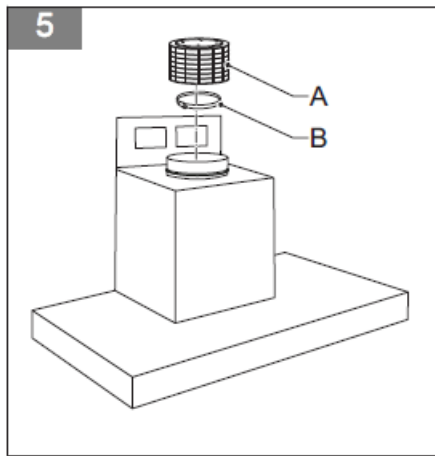
- **Caution:** Make sure that you cover the exhaust opening (A), if present.

### Installing the filter



1. If necessary, put the adaptor (A) on the extractor hood.

- **Warning:** The adaptor is only necessary when the motor of the extractor hood is too close to the wall.

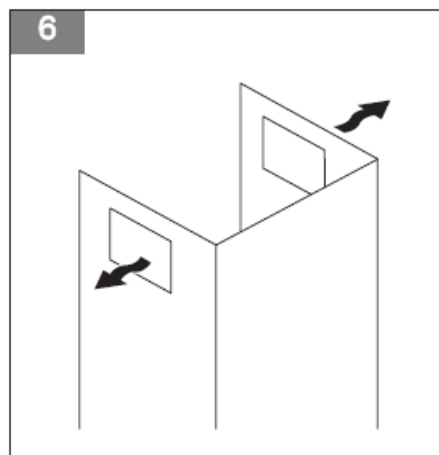


2. Put the hose clamp (B) and the filter (A) on the extractor hood or the adaptor.
3. Tighten the hose clamp.

### Connecting the filter

1. Connect the extractor hood plug and the filter plug to the mains supply or to the mains adaptor and then the mains supply.

### Finishing the installation



1. Install the shaft on the extractor hood.
2. Make sure that the shaft has sufficient openings for ventilation.

## Operation

### PREPARING FOR OPERATION

1. For optimal room air cleaning, it is imperative for your extractor hood to be adequately ventilated and adapted to the respective steam development.
2. Make sure that you activate your extractor hood at level 1 or 2 at least 10 minutes before you start cooking.

### COMPLETING OPERATION

1. Make sure that your extractor hood operates at level 1 or 2 for 15 minutes after you finish cooking.

Technical data

PRODUCT FICHE

Item	Specification
Capacity	650 m3
Features	Suitable for all extractor hoods (new / pre-installed)
	Cleaning the air and removing bad odours up to 98%
	Long lifespan
	Self cleaning
	No ozone O <sub>3</sub>
	Double filter: plasma and carbon
	Compliant to RoHS directive
Pressure loss	100 Pa per 2 m/s
Contact time / Inflow speed	depending on level of contamination
	0.1-1 sec., max. 2 minutes
Noise level	0 dB

DIMENSIONS AND MASS



Item	Specification
Diameter [mm]	150
Height [mm]	240
Diameter connection [mm]	150
Gross weight [kg]	2.6
Net weight [kg]	1.66

## ELECTRICAL SPECIFICATIONS

Item	Specification
Wattage [W]	10
Voltage [V]	210-250
Hertz [Hz]	50
Energy consumption [W]	10
Energy consumption – standby [W]	0.5

## General terms and conditions of service and warranty

We do not need to remind you of the importance of service. After all, we develop our products to a standard so that you can enjoy them for many years, without any concerns. If, nevertheless, there is a problem, we believe you are entitled to a solution straight away. Hence our products come with an exchange service, on top of the rights and claims you are entitled to by law. By exchanging a product or part, we save you time, effort and costs.

### 2-year full manufacturer's warranty

1. Customers enjoy a 2-year full manufacturer's warranty on all Inventum products. Within this period, a faulty product or part will always be exchanged for a new model, free of charge. In order to claim under the 2-year full manufacturer's warranty, you can either return the product to the shop you bought it from or contact the Inventum customer service department via the form at '<https://www.inventum.eu/service-aanvraag>'.
2. The 2-year warranty period starts from the date the product is bought.
3. In order to claim under the warranty, you must produce a copy of the original receipt.
4. The warranty applies only to normal domestic use of Inventum products within the Netherlands.

## 5-year Inventum warranty

1. Inventum offers a 5-year warranty on most large domestic appliances and a selection of small domestic appliances. This 5-year Inventum warranty consists of a 2-year full manufacturer's warranty, extended by a further 3-year warranty. The only thing you need to do to qualify for the 3-year extended warranty is to register the product within 45 days of purchase. You can read more about registering the product in the following paragraph.
2. In accordance with the 5-year Inventum warranty provisions, a faulty product or part will always be exchanged for a new model during the first 2 years under the warranty. During the 3rd to 5th year under the warranty, you will only pay the costs of exchange. The current costs of exchange are listed at '<https://www.inventum.eu/omruilkosten>'.
3. In order to claim under the 5-year Inventum warranty, you can either return the product to the shop you bought it from or contact the Inventum customer service department via the form at '<https://www.inventum.eu/serviceaanvraag>'.
4. The 5-year warranty period starts from the date the product is bought.
5. In order to claim under the warranty, you must produce a copy of the original receipt.
6. The warranty applies only to normal domestic use of Inventum products within the Netherlands.

## Product registration

1. The 3-year extended warranty is easy to obtain, free of charge, by registering the product within 45 days of purchase, via the website '<https://www.inventum.eu/garantie-registratie>'. If you did not register the product within 45 days of purchase, you can still do so up to 2 years after the purchase date. However, there will be a charge. The one-off registration charge is € 89 for each separate product. Registration is possible only for products that are subject to the 5-year Inventum warranty. Whether the product qualifies for the 5-year Inventum warranty is stated in the product user manual and in the product information sheet, on Inventum's website.
2. The warranty period always starts from the date the product is bought. If the product is registered for the extended warranty at a later date, the warranty period still starts from the original date of purchase.
3. The 3-year extended warranty can only be applied for if you are in the possession of a copy of the original receipt and the Inventum 5-year warranty certificate.

## Large domestic appliances

1. Breakdowns or faults in large domestic appliances (separate and built-in white goods) can be registered via the form at '<https://www.inventum.eu/service-aanvraag>', by calling the Inventum customer service department or in the store where you bought the device. The telephone number of the customer service department can be found at '<https://www.inventum.eu>'.
2. In the event of breakdowns or faults in large domestic appliances, Inventum will have the option to have a service engineer inspect the faulty device onsite at the customer in the Netherlands and to carry out repairs, there and then. The Inventum customer service department can also decide to have the device exchanged.
3. If you suffer a breakdown or fault in a large domestic appliance during the first 2 years from the date of purchase, Inventum will not charge any costs for the exchange, call-out or for parts and labour.
4. If you registered the product as described before at '<https://www.inventum.eu/garantie-registratie>' and you

subsequently report a breakdown of a large domestic appliance in the 3rd to 5th year of the date of purchase, the 5-year Inventum warranty applies and the device will be repaired or exchanged, free of charge. In the event of a repair or exchange of the device, you only pay the costs of exchange. The current costs of exchange are listed at '<https://www.inventum.eu/omruilkosten>'. If you did not register the product, the 3-year extended warranty does not apply.

5. When reporting a breakdown or fault, a service engineer will contact the customer within 1 working day in order to make an appointment. When the report is made in a weekend or during a public holiday, this will be the next working day.
6. If you report a breakdown or fault via the form at '<https://www.inventum.eu/service-aanvraag>', you will be kept informed of the progress via mobile messages and e-mail.
7. The warranty period starts from the date the product is bought.
8. In order to claim under the warranty, you must produce a copy of the original receipt and the Inventum 5-year warranty certificate.
9. The warranty applies only to normal domestic use of Inventum products within the Netherlands.

### **Breakdowns or faults outside the warranty period**

1. Breakdowns or faults in small or large domestic appliances outside the warranty period, can be reported to the costumer services department via the form at '<https://www.inventum.eu/service-aanvraag>' or by calling the costumer services department.
2. The costumer services department may ask you to send the product for inspection or repair. The costs of dispatch will be at your expense.
3. The inspection to establish whether repair is possible involves a charge. You need to grant your permission for this, in advance.
4. In the event of a large domestic appliance, Inventum, at your request, can send out a service engineer. In that case, you will be charged the call-out costs, as well as parts and labour.
5. In the event of an instruction to repair, the repair costs must be paid in advance. In the event of a repair by a service engineer, the costs of the repair must be settled with the engineer onsite, preferably by means of PIN payment.

### **Warranty exclusions**

1. The following is excluded from the aforesaid warranties:
  - normal wear and tear;
  - improper use or misuse;
  - insufficient maintenance;
  - failure to comply with the operating and maintenance instructions;
  - unprofessional installation or repairs by third parties or the customer himself;
  - non-original parts used by the customer;
  - use for commercial or business purposes;
  - removal of the serial number and/or rating label.
2. In addition, the warranty does not apply to normal consumer goods, such as:
  - dough hooks, baking tins, (carbon) filters, etc.;
  - batteries, bulbs, carbon filters, fat filters, etc.;

- external connection cables;
  - glass accessories and glass parts such as oven doors;
  - and similar items.
3. Transport damage not caused by Inventum is also excluded. Therefore, inspect your new device before starting to use it. If you detect any damage, you must report this to the store where you purchased the product within 5 working days, or to the Inventum customer service department via the form at '<https://www.inventum.eu/serviceaanvraag>'. If transport damage is not reported within this period, Inventum does not accept any liability in this respect.
4. The following are excluded from warranty and/or replacement: faults, loss of and damage to the device as a result of an event that is normally insured under the home contents insurance.

### **Important to know**

1. The replacement or repair of a faulty product, or a part thereof, does not lead to an extension of the original warranty period.
2. Parts that have been replaced, packaging material and exchanged devices are taken back by the service engineer and become the property of Inventum.
3. If a complaint is unfounded, all costs arising from it will be at the customer's expense.
4. Following expiry of the warranty period, all costs of repair or replacement, including administration costs, dispatch and call-out charges, will be charged to the customer.
5. Inventum cannot be held liable for damage as a result of devices built in incorrectly.
6. Inventum cannot be held liable for damage caused by external events, unless this liability arises from mandatory statutory provisions.
7. These warranty and service provisions are governed by Dutch law. Disputes will be settled exclusively by the competent Dutch court.

### **Inventum Huishoudelijke Apparaten B.V.**

- Postbus 5023 6802 EA Arnhem
- [www.inventum.eu](http://www.inventum.eu)
- Insta: [instagram.com/inventum1908](https://www.instagram.com/inventum1908)
- FB: [facebook.com/inventum1908](https://www.facebook.com/inventum1908)
- Youtube: [youtube.com/inventum1908](https://www.youtube.com/inventum1908)

IPF650R/01.1122

Modifications and printing errors reserved.

### **Documents / Resources**

 <p><b>INVENTUM</b> model 1908</p> <p>• Gebruiksaanwijzing 5-11 • Garantievoorwaarden 12-13 • Technische specificaties 14-15 • Garantievoorwaarden 16-17 • Garantievoorwaarden 18-19</p>	<h2><a href="#">INVENTUM IPF650R Plasmafilter</a> [pdf] User Manual</h2> <p>IPF650R Plasmafilter, IPF650R, Plasmafilter</p>
---	---

## References

-  [Inventum \(@inventum1908\) • Instagram photos and videos](#)
-  [Inventum Huishoudelijke Apparaten - Altijd 5 jaar garantie!](#)
-  [Inventum Huishoudelijke Apparaten - Altijd 5 jaar garantie!](#)
-  [Inventum Huishoudelijke Apparaten - Altijd 5 jaar garantie!](#)