



inventor EU-OSK105 Dehumidifiers WiFi Function User Manual

[Home](#) » [inventor](#) » inventor EU-OSK105 Dehumidifiers WiFi Function User Manual 

Contents

- [1 inventor EU-OSK105 Dehumidifiers WIFI Function](#)
- [2 SPECIFICATION](#)
- [3 PRECAUTIONS](#)
- [4 DOWNLOAD AND INSTALL APP](#)
- [5 USER REGISTRATION](#)
- [6 NETWORK CONFIGURATION](#)
- [7 HOW TO USE THE APP](#)
- [8 SPECIAL FUNCTIONS](#)
- [9 Documents / Resources](#)
 - [9.1 References](#)
- [10 Related Posts](#)



inventor EU-OSK105 Dehumidifiers WIFI Function



DECLARATION OF CONFORMITY

Hereby, we declare that this unit is in compliance with the essential requirements and other relevant provisions of Directive 2014/53/EU.

A copy of the full DoC is attached.

SPECIFICATION

- **Model:** EU-OSK105

- **Standard:** IEEE 802. 11b/g/n Antenna Type: Printed PCB Antenna
- **Frequency:** 2400~2483.5 MHz
- **Operation Temperature:** 0°C~45°C/32°F~113°F Operation Humidity: 10%~85%
- **Power Input:** DC 5V/300mA
- **Maximum Transmitted Power:** <20dBm

PRECAUTIONS

- Applicable system: iOS, Android. (Suggested: iOS 9.0 or above, Android 6.0 or above)
 - Please keep you APP up to date with the latest version.
 - Due to special situation may be occurred, we explicitly claims below: Not all of the Android and i OS system are compatible with APP. We will not be responsible for any issue as a result of the incompatibility.
- **Wireless safety encryption**
 Supported Wi-Fi band: 2.4GHz
 Smart kit only support WPA-PSK/WPA2-PSK encryption and none encryption .
 WPA- PSK/WPA2-PSK encryption is recommended.
- **Cautions**
 - Due to different network situation, control process may return time-out sometimes. If this situation occurs, the display between board and App may not be the same, please do not feel confused.
 - Smart Phone camera needs to be 5 million pixels or above to make sure scan QR code well.
 - Due to different network situation , sometimes , request time-out could happen, thus, it is necessary to do network configuration again.
 - The APP system is subject to update without prior notice for product function improvement. The actual network configuration process may be slightly different from the manual, the actual process shall prevail.
 - Please Check The Service Website For More information.

DOWNLOAD AND INSTALL APP

CAUTION: The following QR Code is only for downloading the APP. This is different from the QR code the SMART KIT has on it.



Android



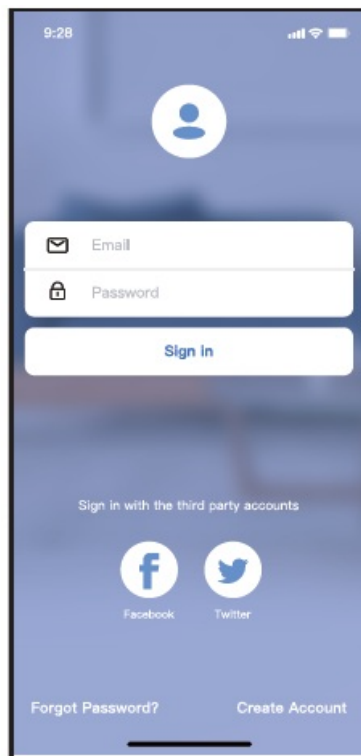
iOS

- Android Phone users: scan Android QR code or go to google play, search «Inv matell» app and download it.
- iOS users: scan iOS QR code or go to APP Store, search «Inv matell» app and download it.

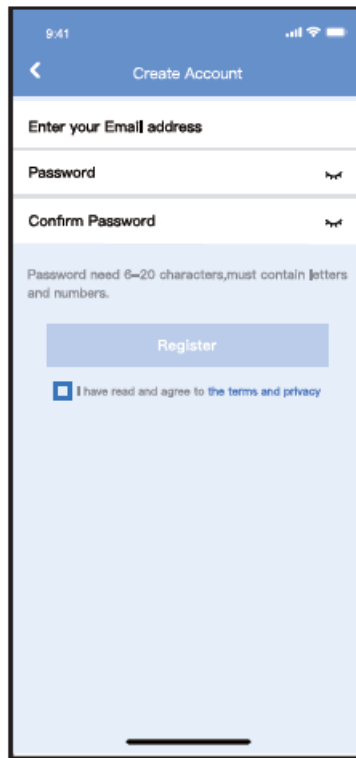
USER REGISTRATION

- Please ensure your mobile device is connected to Wi-Fi router. Also, the Wireless router has already connected to Internet before doing user registration and network configuration.
- You can log in with the third party accounts.

1. Click «Sign up»



2. Enter your email address and password, and then click «Registration»



NETWORK CONFIGURATION

Cautions

- It is necessary to forget any other local / nearby networks and make sure the Android or i OS device is connected to the Wireless network you want to configure.
- Make sure during the configuration to keep your mobile data connection turned off
- Make sure the Android or i OS device Wireless function works well and can be connected back to your original Wireless network automatically.

Kind reminder:

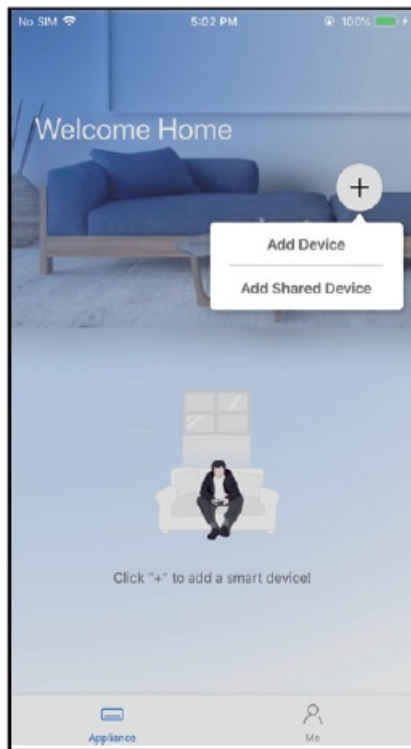
User must finish all the steps in 8 minutes after powering on AC, otherwise you need to power on it again.

Add New Device

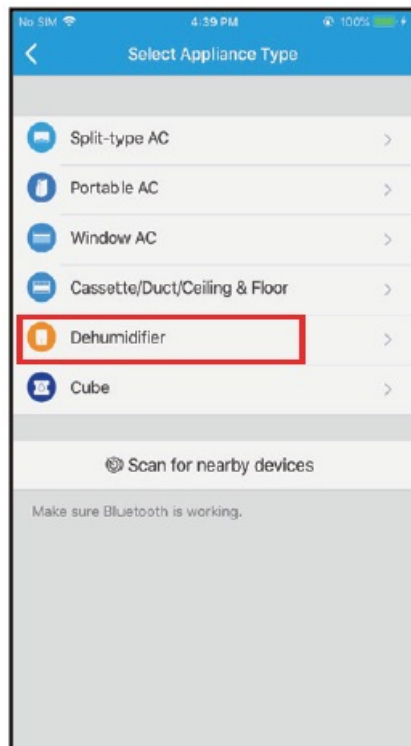
1. Make sure your mobile device has already been connected to the Wireless network which you want to use. Also, you need to forget other local / nearby Wireless networks in case it influences your configuration process.
2. Disconnect the power supply of the dehumidifier for 5 minutes.
3. Connect the power supply of the dehumidifier and press and hold the «FILTER» button for more than 3 seconds (the required button might be different, kindly advise the User Manual of your unit).
4. When the dehumidifier displays “AP”, it means that the dehumidifier wireless has already entered into “AP” Mode.

Manually Add New Device

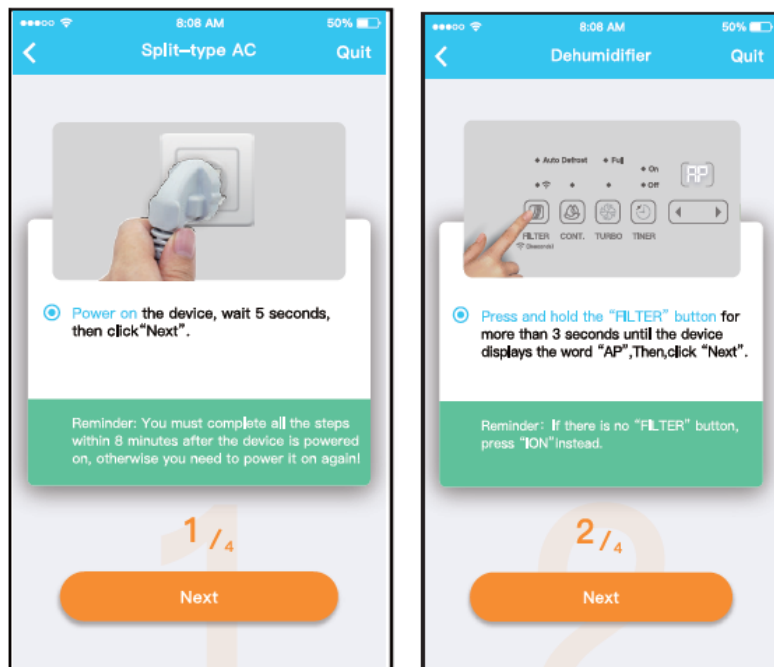
5. Press “ + Add Device ”



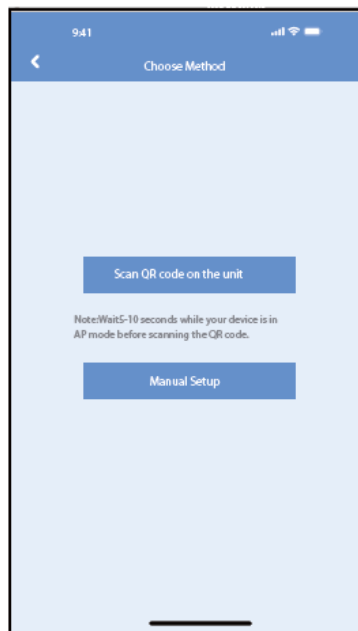
6. Select the appliance you are setting up



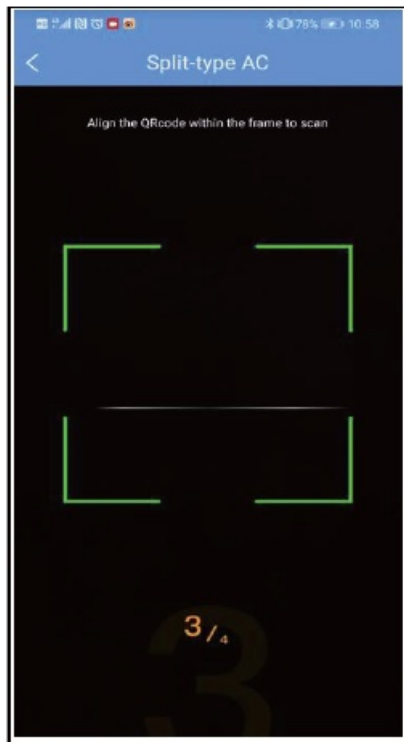
7. Follow the above steps to enter “AP” mode.



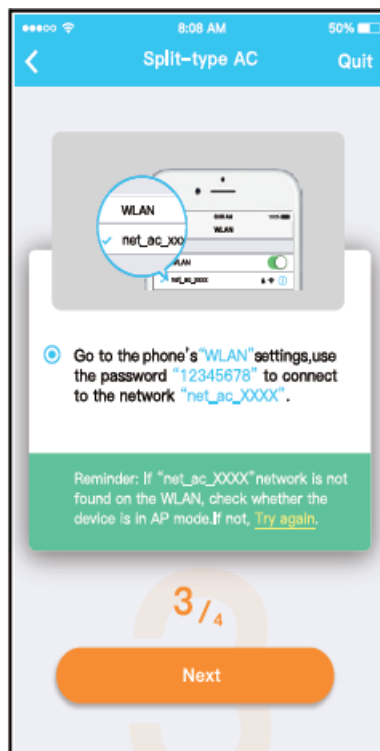
8. Choose the network configuration method.



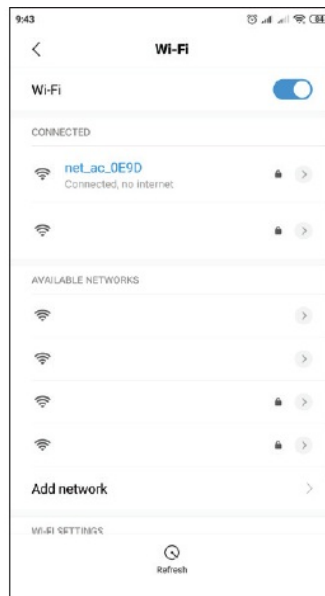
9. Scan the QR code



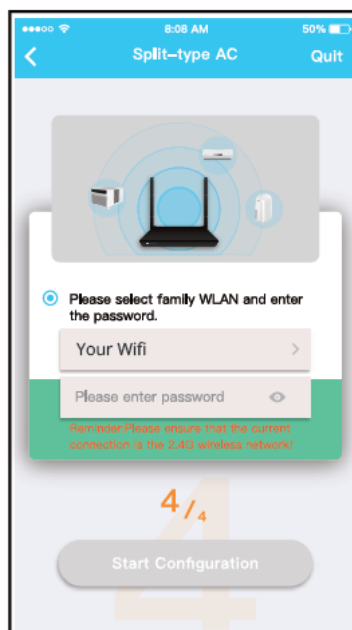
Or choose the “Manual Setup” method.



10. Find the network «net_XX_XXXX» and press to connect to it. Use password «12345678» to connect and return to INV mate II. Press «Next».



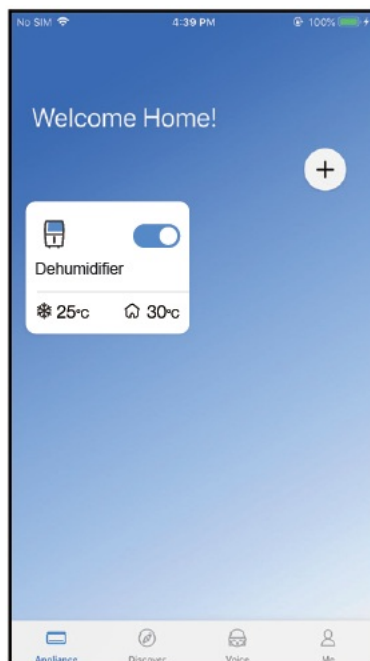
11. Please enter your Wi-Fi password.



12. Network configuration is successful.



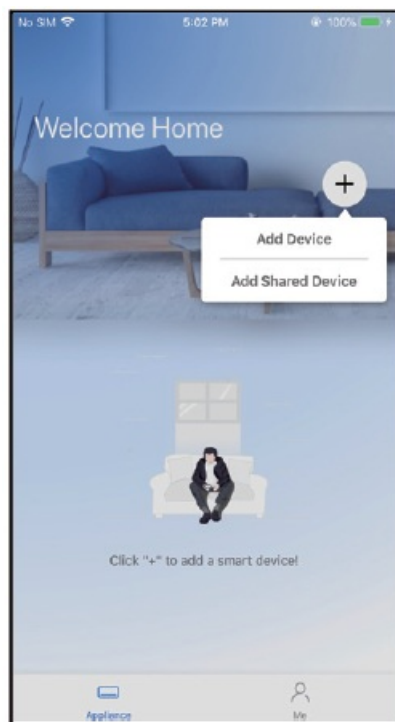
13. Configuration Success, you can see the device on the list.



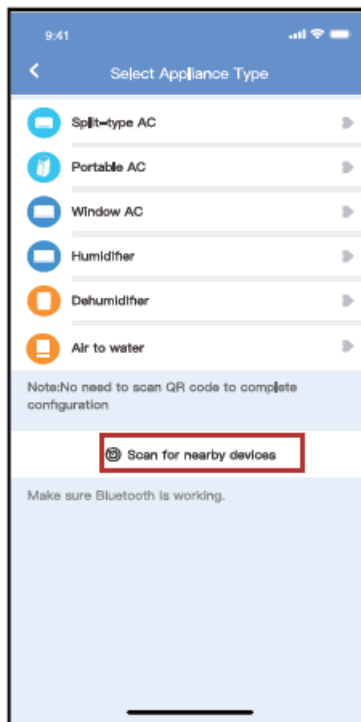
Add New Device with Bluetooth Connection:

Note: Make sure the Bluetooth of your mobile device is working.

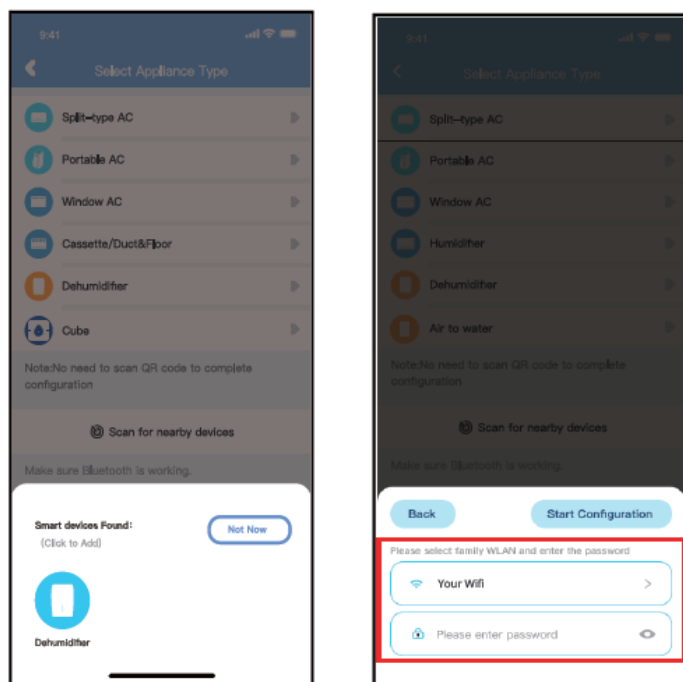
1. Press “+ Add Device



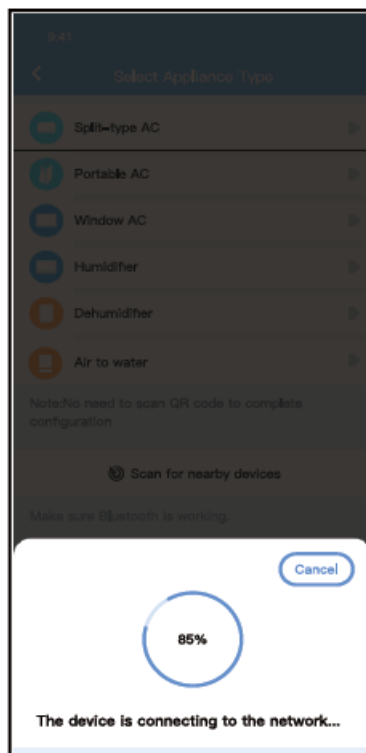
2. Select Scan for nearby devices



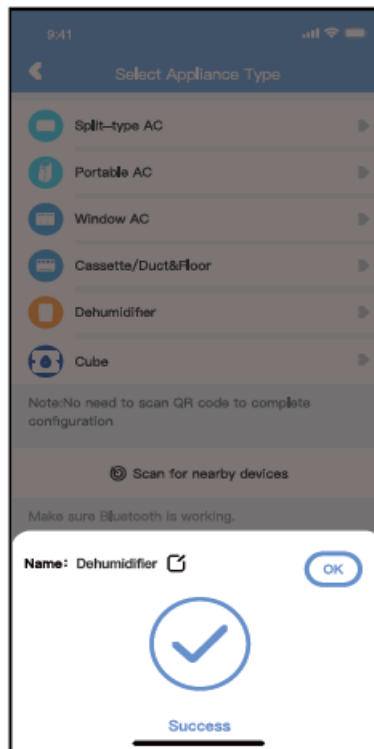
- Wait for your unit to appear in the list. Select the device to add it. Select your home Wi-Fi and enter the password.



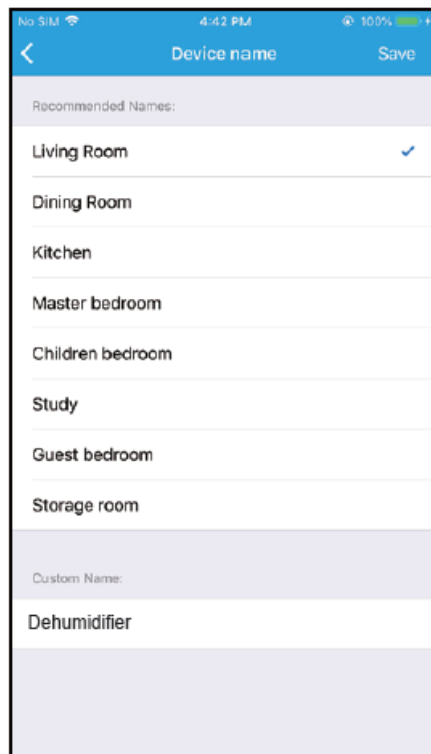
- Allow a few moments for the device to connect.



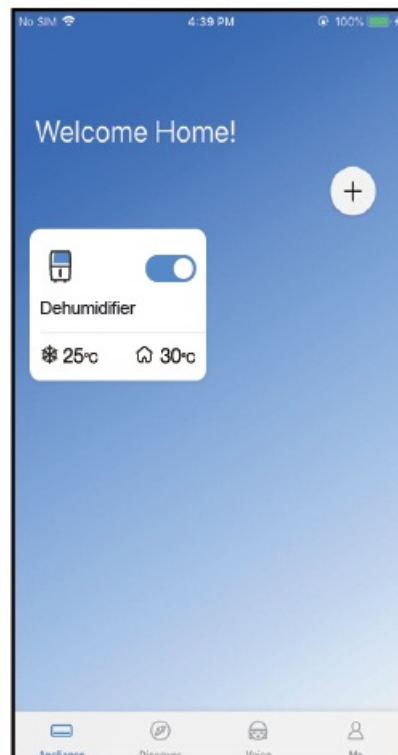
5. Network configuration is successful.



6. Select the displayed name of your device from the recommended, or name you device.



7. Configuration Success, you can see the device on the list.



NOTE:

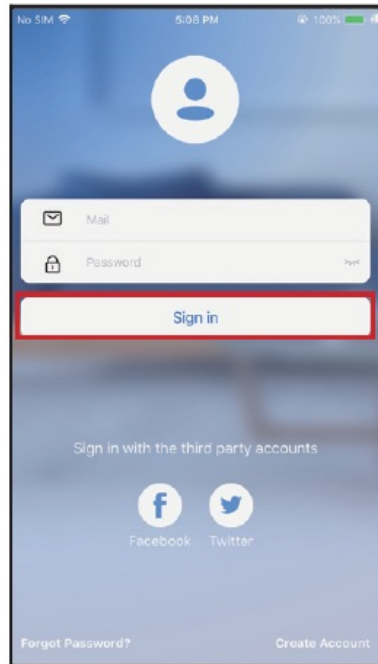
- When finishing network configuration, APP will display «success» on the screen.
- Due to wireless nature, it is possible that the device status still display “offline” . If this situation occurs, it is necessary to pull down to refresh the device list on the APP and make sure the device status appears “online”. Alternatively, you can turn off the dehumidifier and router power for 5 minutes and turn on it again, the device status will appear “online” after a few minutes.

HOW TO USE THE APP

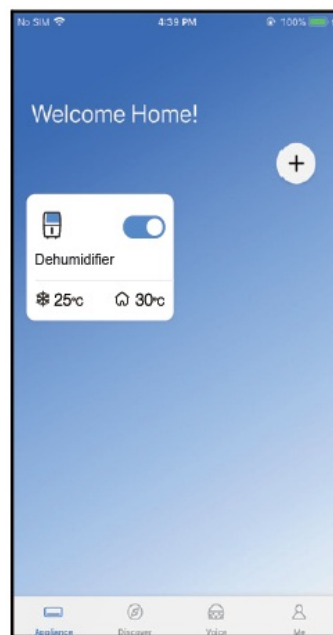
Please ensure both your mobile device and dehumidifier are connected to the Internet before using «INV matell» to control the dehumidifier via internet.

Please follow the next steps:

1. Click «Sign in»



2. Choose the air conditioner.



3. User can control the dehumidifier's on/off status, operation mode, target humidity, fan speed and so on.



NOTE:

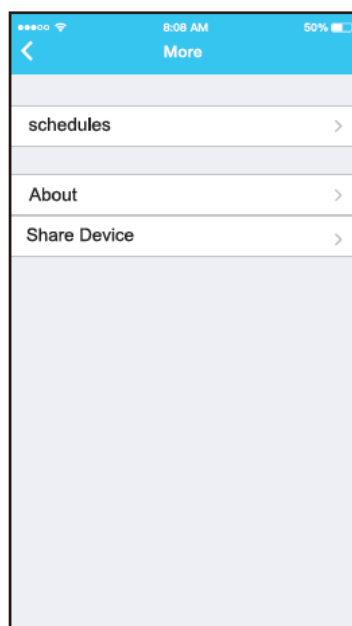
Not all the functions of the APP are available on the dehumidifier. For example: ION, Fresh functions. Please check the user manual of your dehumidifier for more information.

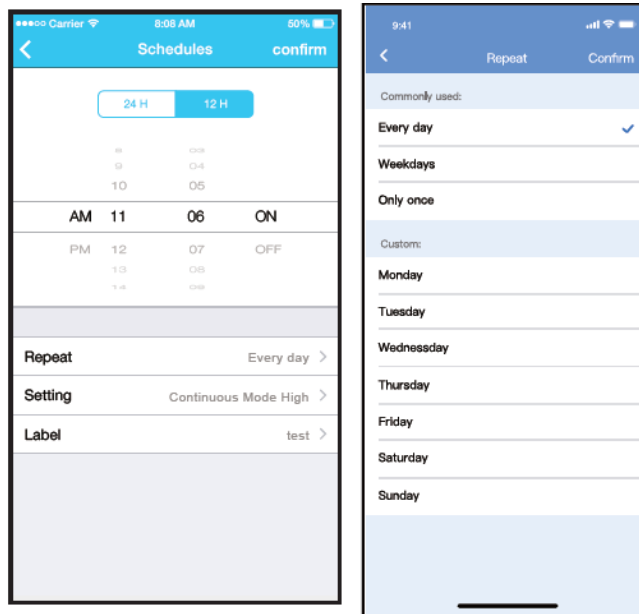
SPECIAL FUNCTIONS

NOTE: If the dehumidifier does not support any of the following functions, the function will not appear in the function list.

- **Schedule**

When setting the timer function, user can program a timer to turn on and/or off the AC on a specified time. The timer can be selected to repeat weekly on any or all days of the week.

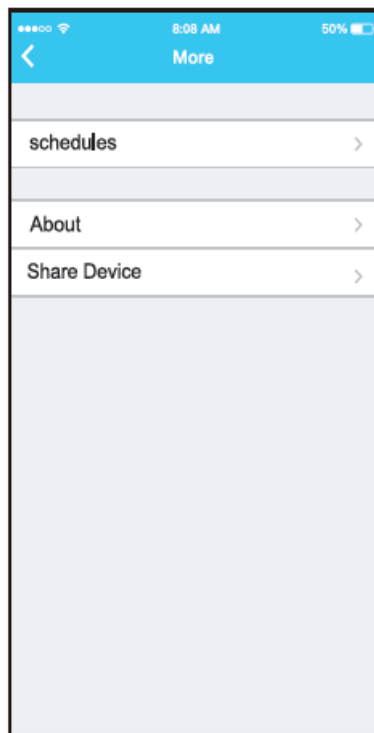




- **Share Device**

The dehumidifier can be controlled by multiple / additional users at the same time by Share Device function.

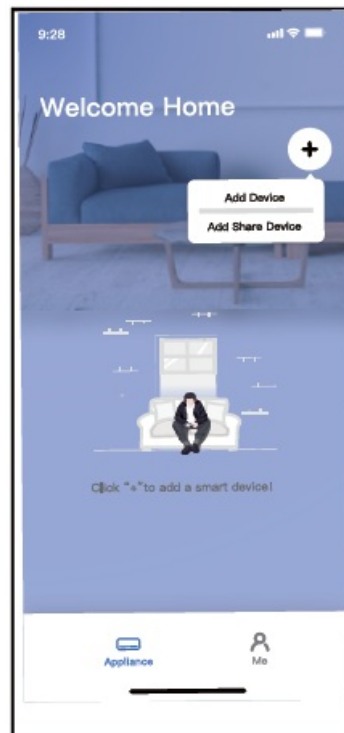
1. Click «Share Device»



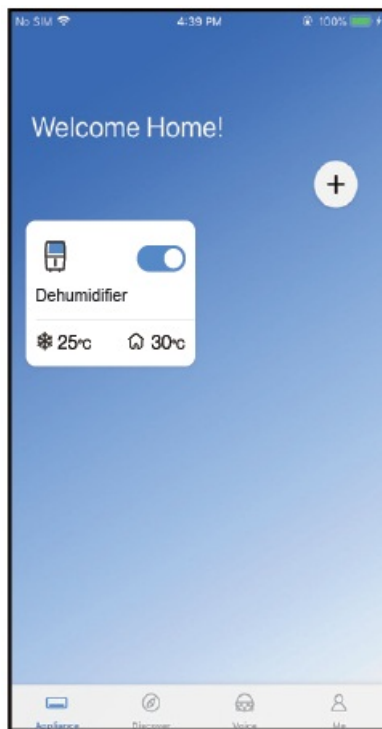
2. Let the other user(s) scan the displayed QR code.



3. Click «Add Share Device» and scan the QR



4. The device is successfully shared.

**CAUTIONS:****FCC ID: 2ADQOMDNA21****IC: 12575A-MDNA21**

This device complies with Part 15 of the FCC Rules and Industry Canada's license-exempt RSSs.

Operation is subject to the following two conditions:

1. This device may not cause interference; and
2. This device must accept any interference, including interference that may cause undesired operation of the device .

Only operate the device in accordance with the instructions supplied.

Changes or modifications to this unit not expressly approved by the party responsible for compliance could void the user's authority to operate the equipment. This device complies with FCC radiation exposure limits set forth for an uncontrolled environment. In order to avoid the possibility of exceeding the FCC radio frequency exposure limits, human proximity to the antenna shall not be less than 20cm (8 inches) during normal operation.

NOTE: This equipment has been tested and found to comply with the limits for a Class B digital device, pursuant to part 15 of the FCC Rules. These limits are designed to provide reasonable protection against harmful interference in a residential installation. This equipment generates, uses and can radiate radio frequency energy and, if not installed and used in accordance with the instructions, may cause harmful interference to radio communications. However, there is no guarantee that interference will not occur in a particular installation. If this equipment does cause harmful interference to radio or television reception, which can be determined by turning the equipment off and on, the user is encouraged to try to correct the interference by one or more of the following measures:

- Reorient or relocate the receiving antenna.
- Increase the separation between the equipment and receiver.
- Connect the equipment into an outlet on a circuit different from that to which the receiver is connected.
- Consult the dealer or an experienced radio/TV technician for help.

RED Declaration of Conformity (DoC)

Unique identification of this DoC: 20220906005

We, INVENTOR A. G. ELECTRIC APPLIANCES S.A. declare under our sole responsibility that the product:

product name: Smart Kit, PWR-WIFI-30L, PWR-WIFI-50L, PR-ION-20L

trade name: INVENTOR

type or model: EU-OSK105

relevant supplementary information: N/A

(e.g. lot, batch or serial number, sources and numbers of items)

to which this declaration relates is in conformity with the essential requirements and other relevant requirements of the RE Directive (2014/53/EU). The product is in conformity with the following standards and/or other normative documents:

HEALTH & SAFETY (Art. 3(1)(a)): EN 62311:2008, EN 50665:2017, EN 62368-1:2014/A11:2017

EMC (Art. 3(1)(b)): EN 301 489-1 V2.2.3: 2019,

EN 301 489-17 V3.2.4 :2020

SPECTRUM (Art. 3(2)): EN 300 328 V2.2.2 :2019

OTHER (incl. Art. 3(3) and voluntary specs): N/A

(Title and/or number and date of issue of the standard(s) or other normative document(s))

Limitation of validity (if any): N/A

Supplementary information: N/A

Notified body involved: N/A

Technical file held by: INVENTOR A.G. ELECTRIC APPLIANCES S.A.

Place and date of issue (of this DoC): Athens, Greece/ 09 June 2022

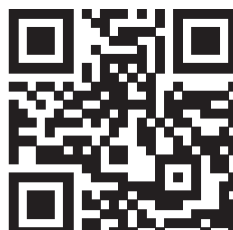
Signed by or for the manufacturer:

INVENTOR A.G. ELECTRIC APPLIANCES S.A.
2,THOUKIDIDOU STR. & 24th KM NATIONAL ROAD
ATHENS - LAMIA
14565 AG STEFANOS - ATHENS - GREECE
TEL: +30 211 300 3333 - FAX: +30 211 300 3333
VAT No: EL 095554670 - GEMI: 005861001000
Website: www.inventor.ac

Name (in print): Georgia Lazaridou

Title: Product Director

Company will not be liable for any issues and problems caused by Internet, Wireless Router and Smart Devices. Please contact the original provider to get further help.



All the pictures in the manual are for explanatory purposes only. The actual shape of the unit you purchased may be slightly different, but the operations and functions are the same.

The company may not be held responsible for any misprinted information. The design and the specifications of the product for reasons, such as product improvement, are subject to change without any prior notice.


Please consult with the manufacturer at +30 211 300 3300 or with the Sales agency for further details. Any future updates to the manual will be uploaded to the service website, and it is advised to always check for the latest version.



Scan here to download the latest version of this manual.

www.inventorairconditioner.com/media-library

Documents / Resources

	<p>inventor EU-OSK105 Dehumidifiers WiFi Function [pdf] User Manual EU-OSK105, Dehumidifiers WiFi Function, EU-OSK105 Dehumidifiers WiFi Function, WiFi Function</p>
---	--

References

- [Κλιματιστικά Inverter WiFi, Ψυγεία, Αφυγραντήρες, Air Conditioners - Inventor](#)
- [Biblioteca media - Inventor](#)
- [Αρχεία και Υποστήριξη - Inventor](#)
- [Media Library & Support - Inventor](#)
- [Bedienungsanleitungen - Inventor appliances](#)