



## inventor AR Series Air Conditioning System Remote Controller User Manual

[Home](#) » [inventor](#) » inventor AR Series Air Conditioning System Remote Controller User Manual 

### inventor AR Series Air Conditioning System Remote Controller User Manual



## Contents

### 1 Remote Controller Specifications

#### 1.1 Quick Start Guide

#### 1.2 SPECIAL NOTE

### 2 Handling the Remote Controller

#### 2.1 Inserting and Replacing Batteries

#### 2.2 TIPS FOR USING REMOTE CONTROL

#### 2.3 NOTES FOR USING REMOTE CONTROL

### 3 Buttons and Functions

### 4 Remote Screen Indicators

### 5 How to Use Basic Functions

#### 5.1 Setting the TIMER

#### 5.2 TIMER ON & OFF setting (example)

### 6 How to Use Advanced Functions

### 7 Support

### 8 Documents / Resources

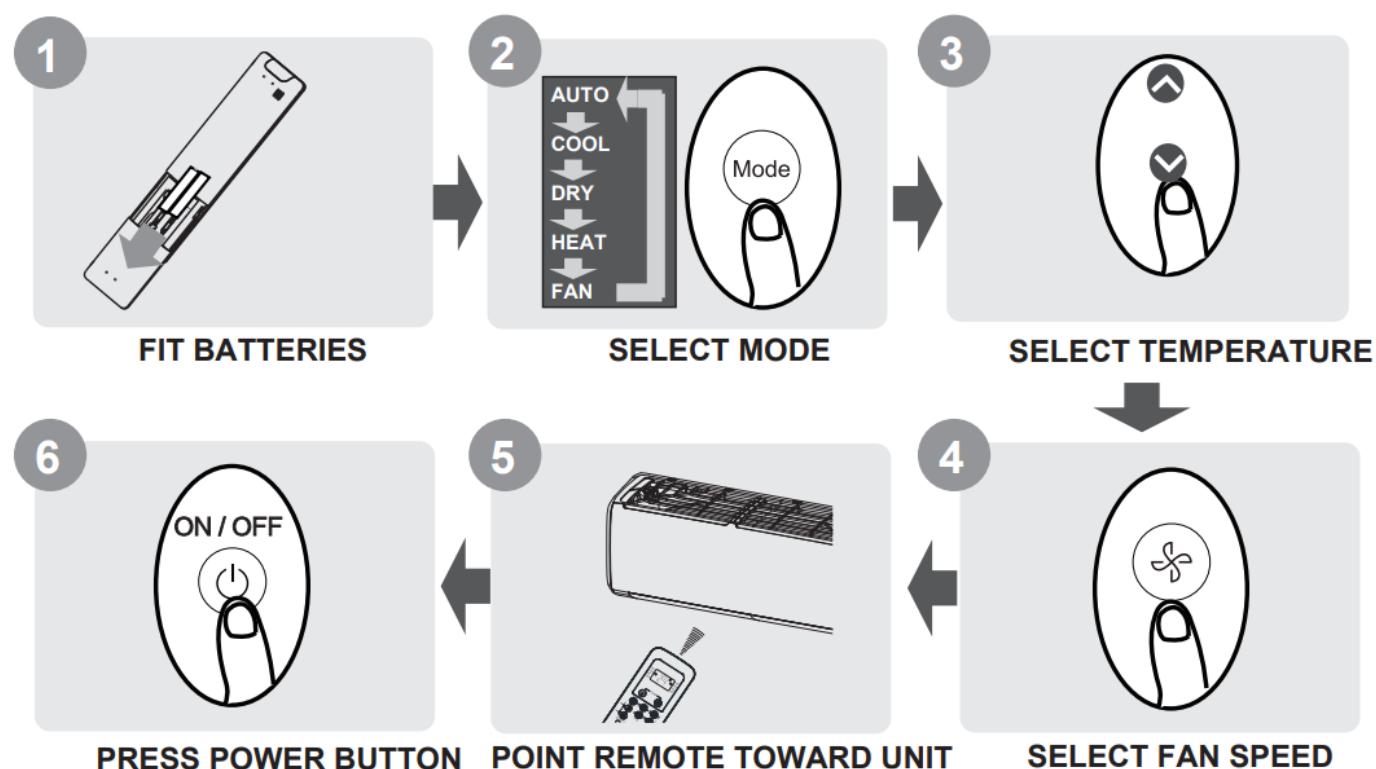
#### 8.1 References

### 9 Related Posts

## Remote Controller Specifications

Model	RG10B1(D)/BGEF
Rated Voltage	3.0V( Dry batteries R03/LR03×2)
Signal Receiving Range	8m
Environment	-5°C~60°C(23°F~140°F)

## Quick Start Guide



## **NOT SURE WHAT A FUNCTION DOES?**

Refer to the How to Use Basic Functions and How to Use Advanced Functions sections of this manual for a detailed description of how to use your air conditioner.

## **SPECIAL NOTE**

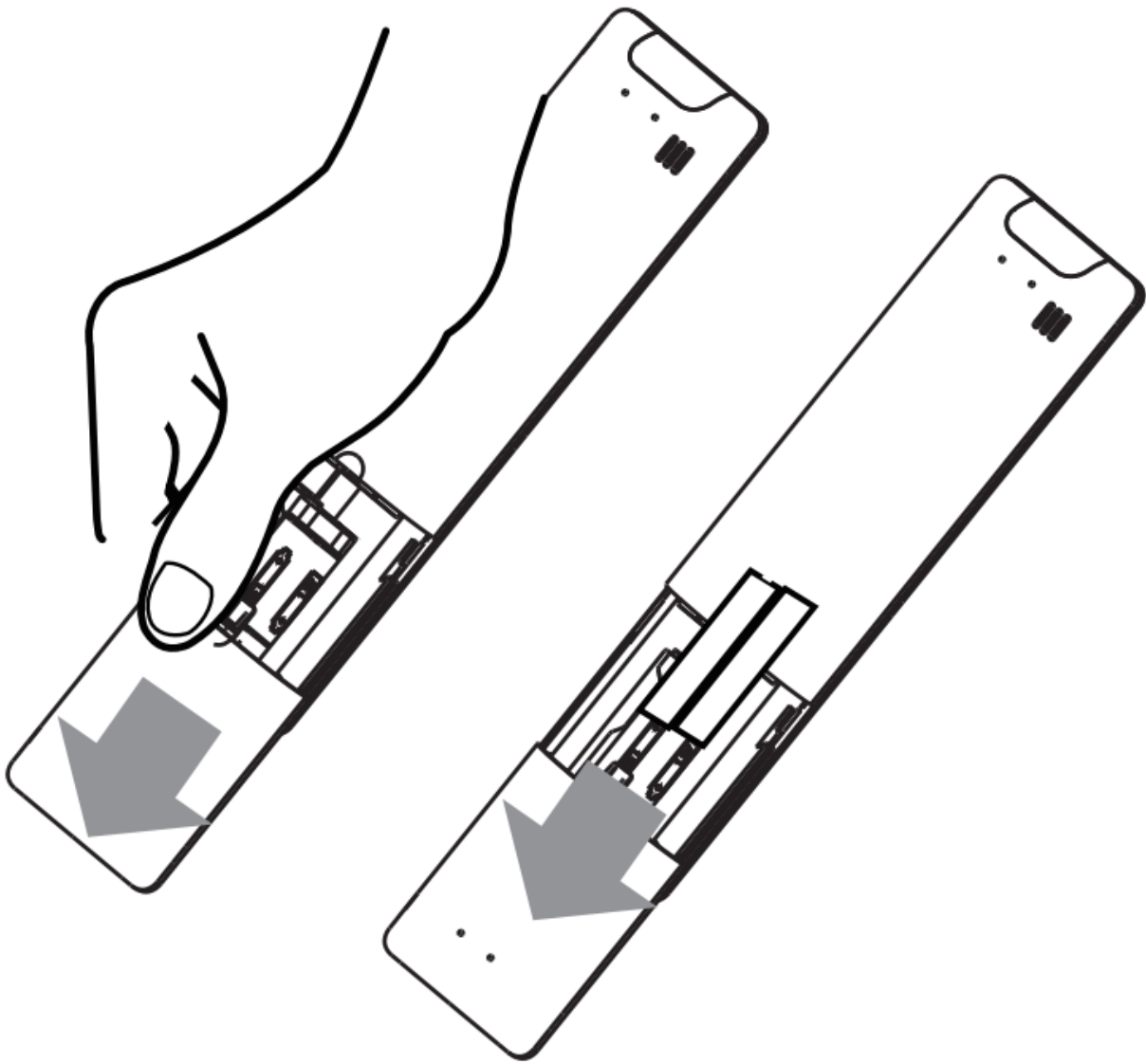
- Button designs on your unit may differ slightly from the example shown.
- If the indoor unit does not have a particular function, pressing that function's button on the remote control will have no effect.
- When there are wide differences between "Remote controller Manual" and "USER'S MANUAL" on function description, the description of "USER'S MANUAL" shall prevail.

## **Handling the Remote Controller**

### **Inserting and Replacing Batteries**

Your air conditioning unit may come with two batteries(some units). Put the batteries in the remote control before use.

1. Slide the back cover from the remote control downward, exposing the battery compartment.  
Insert the batteries, paying attention to match up the (+) and (-) ends of the batteries with the symbols inside the battery compartment.  
Slide the battery cover back into place.



#### **BATTERY NOTES**

For optimum product performance:

- Do not mix old and new batteries, or batteries of different types.
- Do not leave batteries in the remote control if you don't plan on using the device for more than 2 months.

#### **BATTERY DISPOSAL**

Do not dispose of batteries as unsorted municipal waste. Refer to local laws for proper disposal of batteries.

#### **TIPS FOR USING REMOTE CONTROL**

- The remote control must be used within 8 meters of the unit.
- The unit will beep when remote signal is received.
- Curtains, other materials and direct sunlight can interfere with the infrared signal receiver.
- Remove batteries if the remote will not be used more than 2 months.

#### **NOTES FOR USING REMOTE CONTROL**

The device could comply with the local national regulations.

- In Canada, it should comply with CAN ICES-3(B)/NMB-3(B).
- In USA, this device complies with part 15 of the FCC Rules.

**Operation is subject to the following two conditions:**

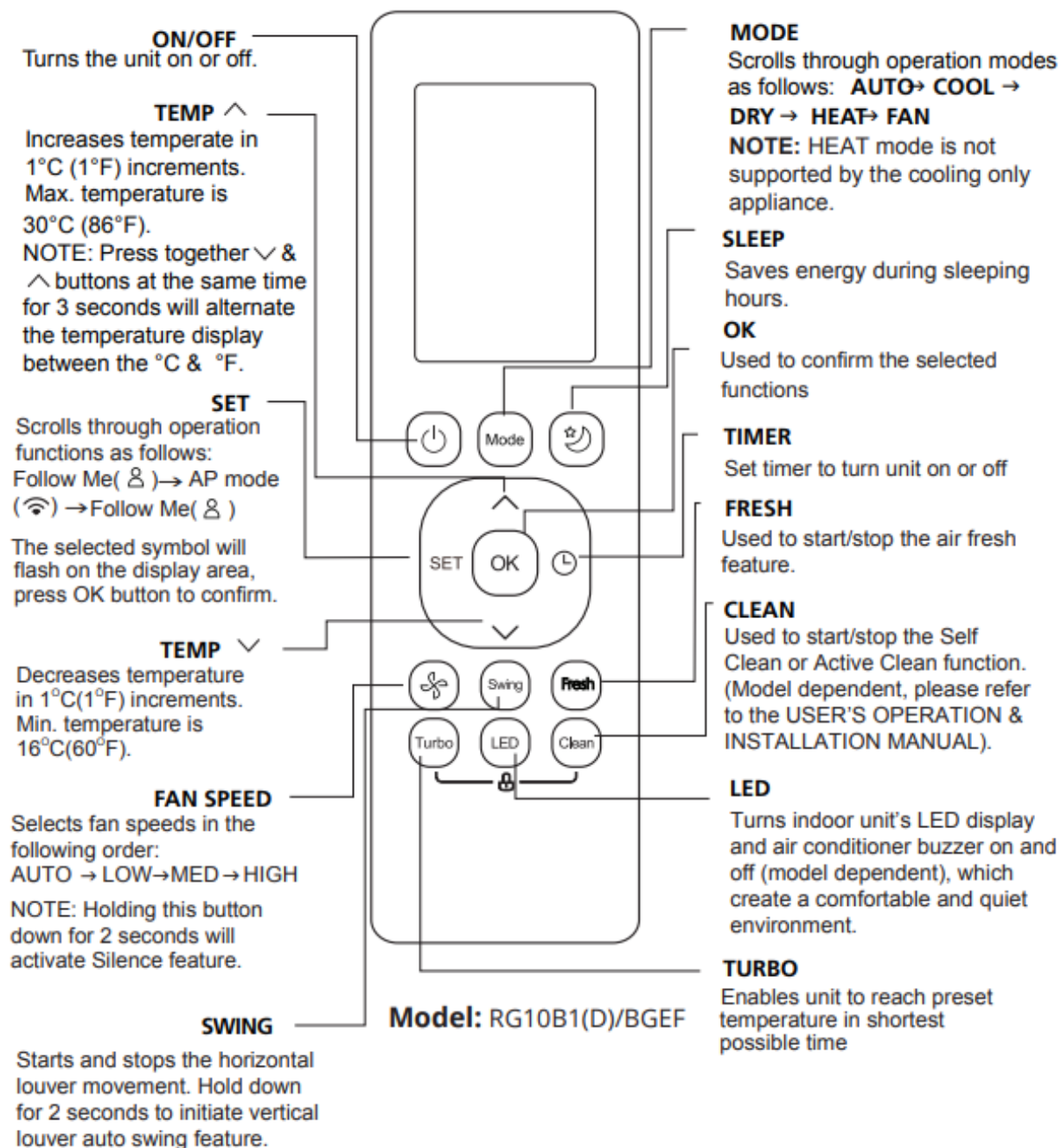
1. This device may not cause harmful interference, and
2. This device must accept any interference received, including interference that may cause undesired operation.

This equipment has been tested and found to comply with the limits for a Class B digital device, pursuant to part 15 of the FCC Rules. These limits are designed to provide reasonable protection against harmful interference in a residential installation. This equipment generates, uses and can radiate radio frequency energy and, if not installed and used in accordance with the instructions, may cause harmful interference to radio communications. However, there is no guarantee that interference will not occur in a particular installation. If this equipment does cause harmful interference to radio or television reception, which can be determined by turning the equipment off and on, the user is encouraged to try to correct the interference by one or more of the following measures:

- Reorient or relocate the receiving antenna.
- Increase the separation between the equipment and receiver.
- Connect the equipment into an outlet on a circuit different from that to which the receiver is connected.
- Consult the dealer or an experienced radio/TV technician for help.
- Changes or modifications not approved by the party responsible for compliance could void user's authority to operate the equipment.

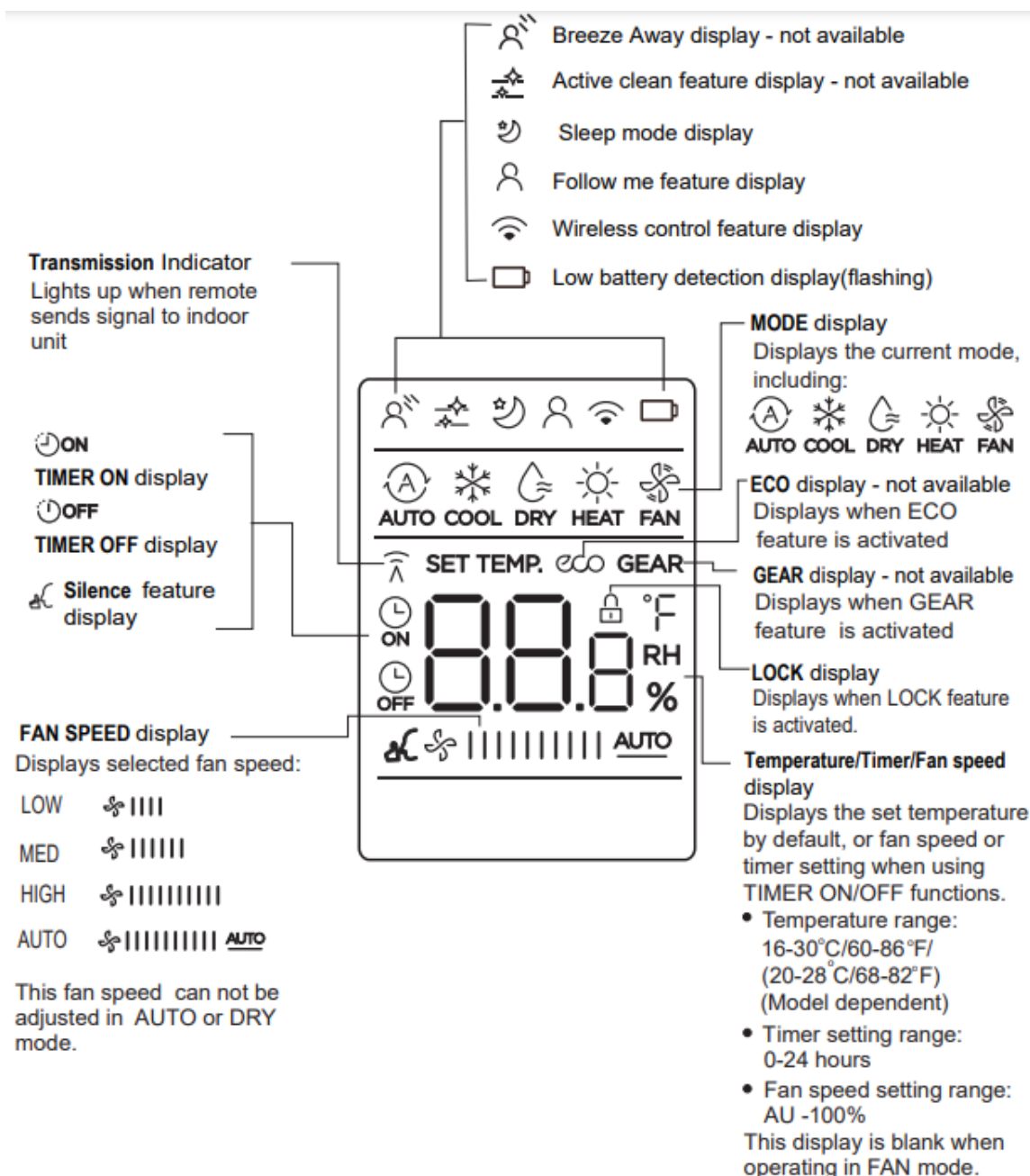
## **Buttons and Functions**

Before you begin using your new air conditioner, make sure to familiarize yourself with its remote control. The following is a brief introduction to the remote control itself. For instructions on how to operate your air conditioner, refer to the How to Use Basic Functions section of this manual.



## Remote Screen Indicators

Information are displayed when the remote controller is power up.



### Note:

All indicators shown in the figure are for the purpose of clear presentation. But during the actual operation, only the relative function signs are shown on the display window.

## How to Use Basic Functions



### ATTENTION

Before operation, please ensure the unit is plugged in and power is available.

### AUTO Mode

Select AUTO mode



Set your desired temperature



Turn on the air conditioner

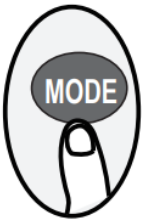


**NOTE:**

1. In AUTO mode, the unit will automatically select the COOL, FAN, or HEAT function based on the set temperature.
2. In AUTO mode, fan speed can not be set.

**COOL or HEAT Mode**

Select COOL/HEAT mode



Set the temperature



Set the fan speed



Turn on the air conditioner



**NOTE:** In DRY mode, fan speed can not be set since it has already been automatically controlled.

**DRY Mode**

Select DRY mode



Set your desired temperature

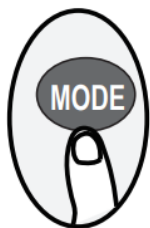


Turn on the air conditioner



**FAN Mode**

Select FAN mode



Set the fan speed



Turn on the air conditioner



**NOTE:** In FAN mode, you can't set the temperature. As a result , no temperature displays in remote screen.

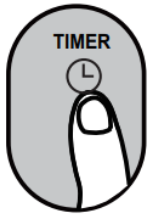
**Setting the TIMER**



**TIMER ON/OFF – Set the amount of time after which the unit will automatically turn on/off.**

### TIMER ON setting

Press TIMER button to initiate the ON time sequence.



Press Temp. up or down button for multiple times to set the desired time to turn on the unit.

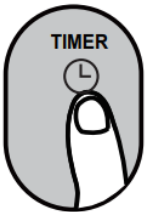


Point remote to unit and wait 1sec, the TIMER ON will be activated.



### TIMER OFF setting

Press TIMER button to initiate the OFF time sequence.



Press Temp. up or down button for multiple times to set the desired time to turn off the unit.



Point remote to unit and wait 1sec, the TIMER OFF will be activated.

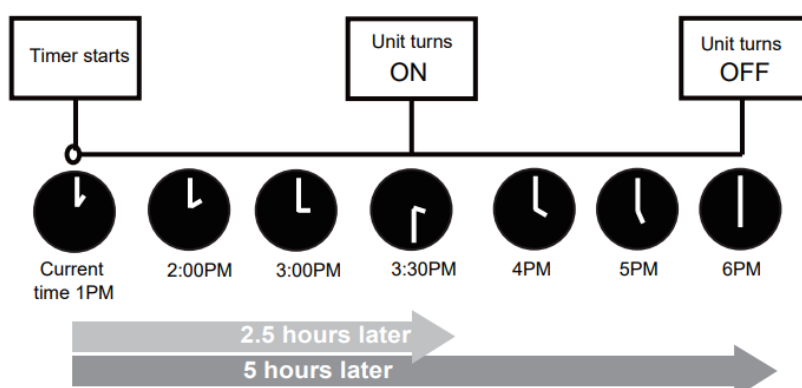
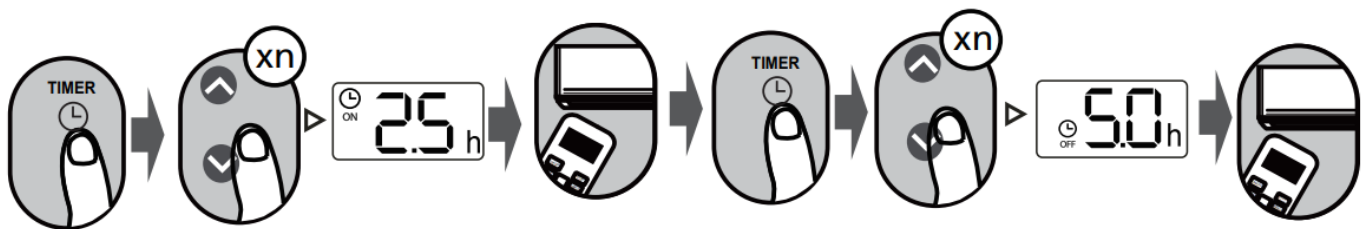


### NOTE:

1. When setting the TIMER ON or TIMER OFF, the time will increase by 30 minutes increments with each press, up to 10 hours. After 10 hours and up to 24, it will increase in 1 hour increments. (For example, press 5 times to get 2.5h, and press 10 times to get 5h.) The timer will revert to 0.0 after 24.
2. Cancel either function by setting its timer to 0.0h.

### TIMER ON & OFF setting (example)

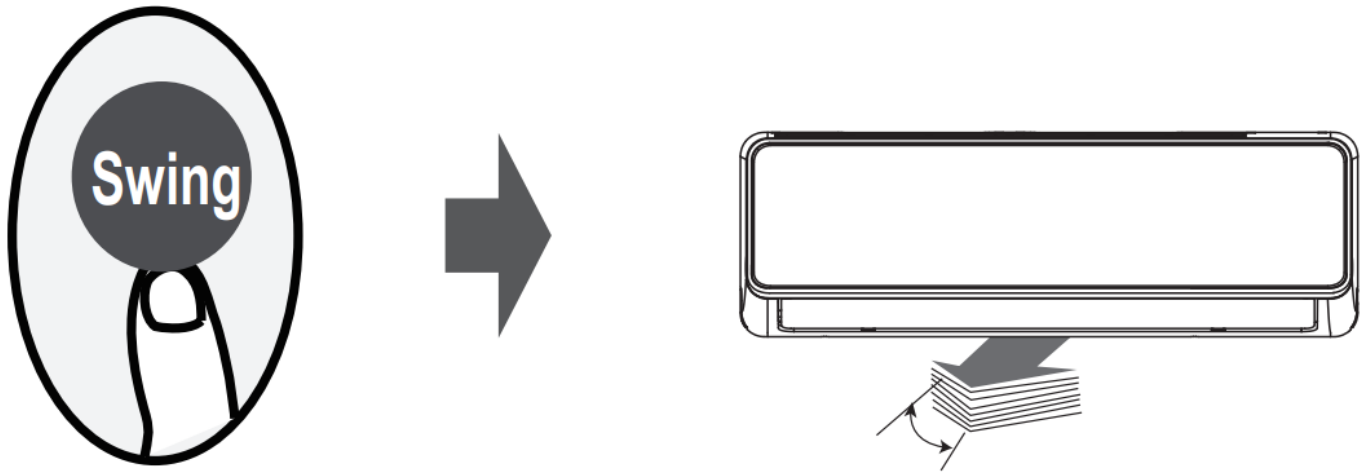
Keep in mind that the time periods you set for both functions refer to hours after the current time.



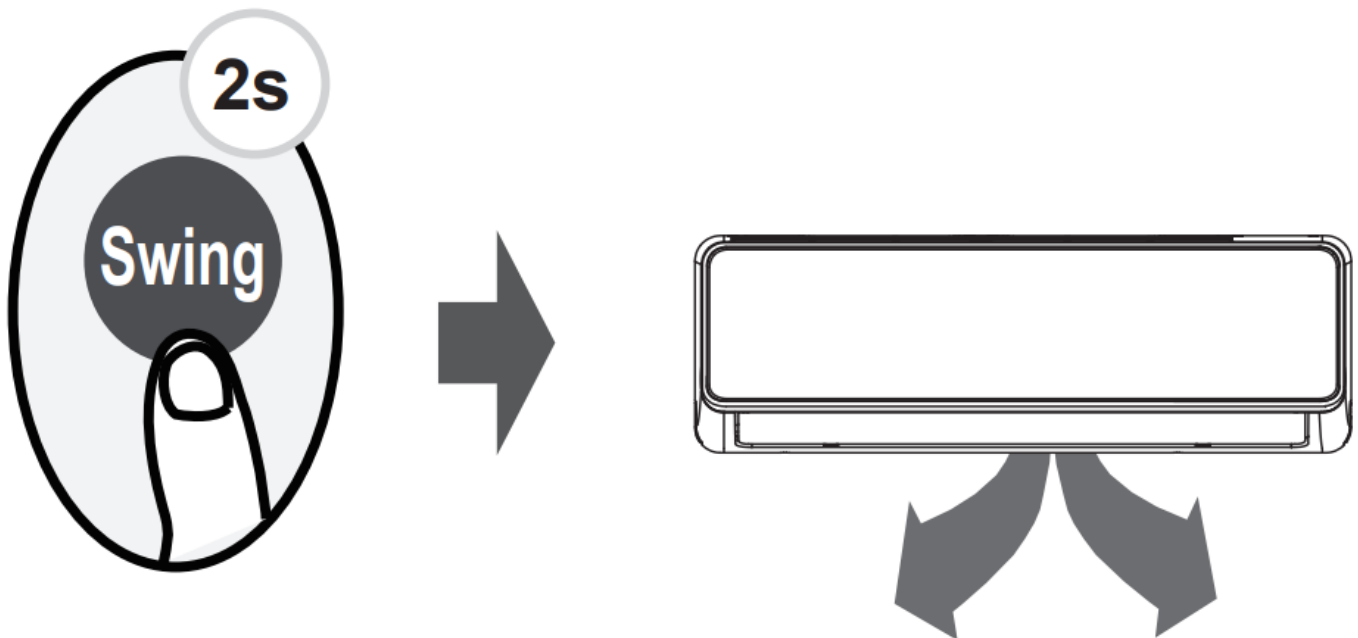
Example: If current timer is 1:00PM, to set the timer as above steps, the unit will turn on 2.5h later (3:30PM) and turn off at 6:00PM.

## How to Use Advanced Functions

### Swing function

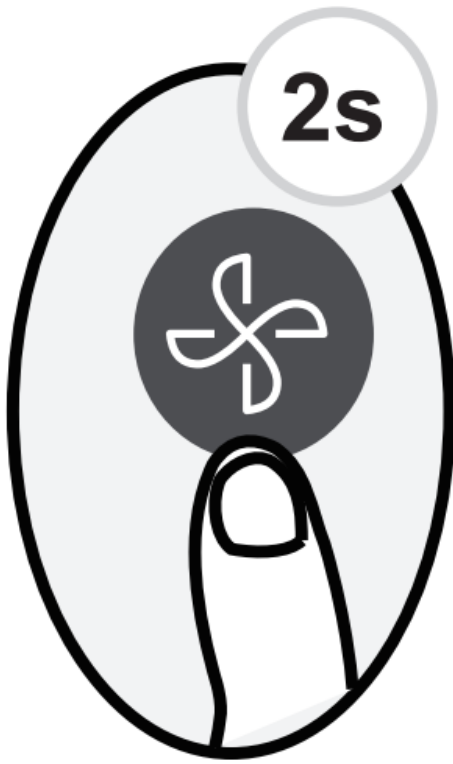


### LED DISPLAY



Press this button to turn on and turn off the display on the indoor unit.

### Silence function



Keep pressing Fan button for more than 2 seconds to activate/disable Silence function.

Due to low frequency operation of compressor, it may result in insufficient cooling and heating capacity. Pressing ON/OFF, Mode, Sleep, Turbo or Clean button while operating will cancel silence function.

#### **8°C function**

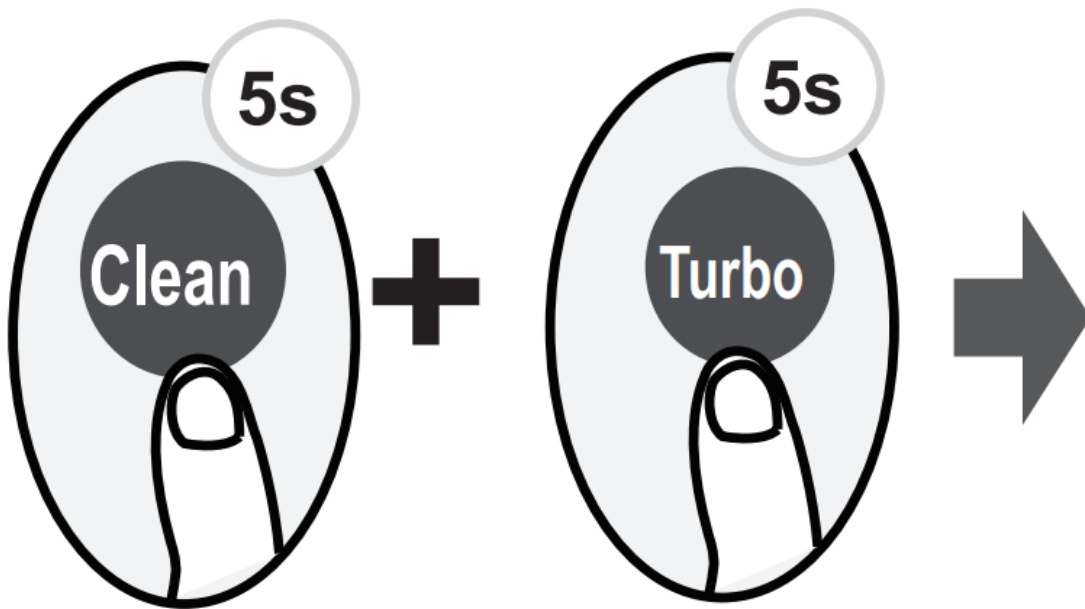
Press this button 2 times during one second under HEAT Mode and setting temperature of 16 C/60 F or 20 C/68 F.



The unit will operate at high fan speed (while compressor on) with temperature automatically set to 8°C/46°F.

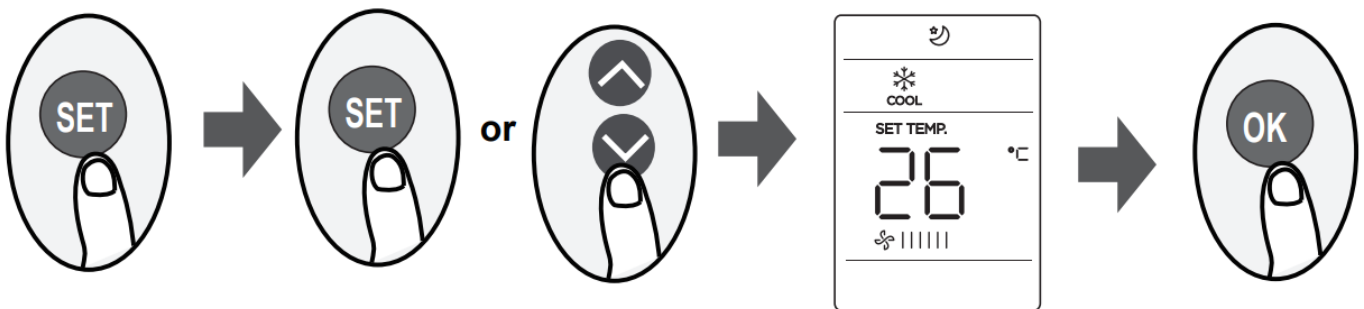
Pressing On/Off, Sleep, Mode, Fan and Temp. button while operating will cancel this function.

#### **LOCK function**



Press together Clean button and Turbo button at the same time more than 5 seconds to activate Lock function. All buttons will not response except pressing these two buttons for two seconds again to disable locking.

#### SET function



- Press the SET button to enter the function setting, then press SET button or TEMP or TEMP button to select the desired function. The selected symbol will flash on the display area, press the OK button to confirm.
- To cancel the selected function, just perform the same procedures as above.
- Press the SET button to scroll through operation functions as follows:

Sleep(  ) Follow Me(  ) AP mode(  )

#### Sleep function( ) :

The SLEEP function is used to decrease energy use while you sleep (and don't need the same temperature settings to stay comfortable). This function can only be activated via remote control. For the detail, see sleep operation in USER'S MANUAL.

**Note: The SLEEP function is not available in FAN or DRY mode.**

#### FRESH:

When the FRESH function is initiated, the ion generator are energized and will help to purify the air in the room.

## Follow me function( ):

The FOLLOW ME function enables the remote control to measure the temperature at its current location and send this signal to the air conditioner every 3 minutes interval. When using AUTO, COOL or HEAT modes, measuring ambient temperature from the remote control (instead of from the indoor unit itself) will enable the air conditioner to optimize the temperature around you and ensure maximum comfort.

**NOTE:** Press and hold Turbo button for seven seconds to start/stop memory feature of Follow Me function.

- If the memory feature is activated, **On** displays for 3 seconds on the screen.
- If the memory feature is stopped, **OF** displays for 3 seconds on the screen.
- While the memory feature is activated, press the **ON/OFF** button, shift the mode or power failure will not cancel the Follow me function.

## AP function( ) :

Choose AP mode to do wireless network configuration. For some units, it doesn't work by pressing the SET button. To enter the AP mode, continuously press the LED button seven times in 10 seconds.

## Support

All the pictures in the manual are for explanatory purposes only. The actual shape of the unit you purchased may be slightly different, but the operations and functions are the same. The company may not be held responsible for any misprinted information. The design and the specifications of the product for reasons, such as product improvement, are subject to change without any prior notice.

Please consult with the manufacturer at +30 211 300 3300 or with the Sales agency for further details. Any future updates to the manual will be uploaded to the service website, and it is advised to always check for the latest version.

Scan here to download the latest version of this manual.

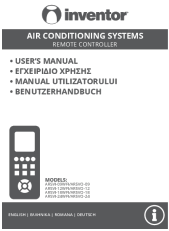
[www.inventorairconditioner.com/media-library](http://www.inventorairconditioner.com/media-library)



**Manufacturer:** INVENTOR A.G. S.A.  
24th km National Road Athens – Lamia & 2 Thoukididou Str.,  
Ag.Stefanos, 14565  
**Tel.:** +30 211 300 3300,  
**Fax:** +30 211 300 3333  
[www.inventor.ac](http://www.inventor.ac)



## Documents / Resources

	<p><a href="#">inventor AR Series Air Conditioning System Remote Controller</a> [pdf] User Manual AR5VI-09WFI, AR5VO-09, AR5VI-12WFI, AR5VO-12, AR5VI-18WFI, AR5VO-18, AR5VI-24WFI , AR5VO-24, AR Series Air Conditioning System Remote Controller, AR Series, Air Conditioning System Remote Controller, Air Conditioning System, Remote Controller</p>
---	--

## References

- [Κλιματιστικά Inverter WiFi, Ψυγεία, Αφυγραντήρες, Air Conditioners - Inventor](#)
- [Biblioteca media - Inventor](#)
- [Αρχεία και Υποστήριξη - Inventor](#)
- [Media Library & Support - Inventor](#)
- [Media Library & Support - Inventor](#)