

intratone 32-0004 Modular Intercom Label Module Instructions

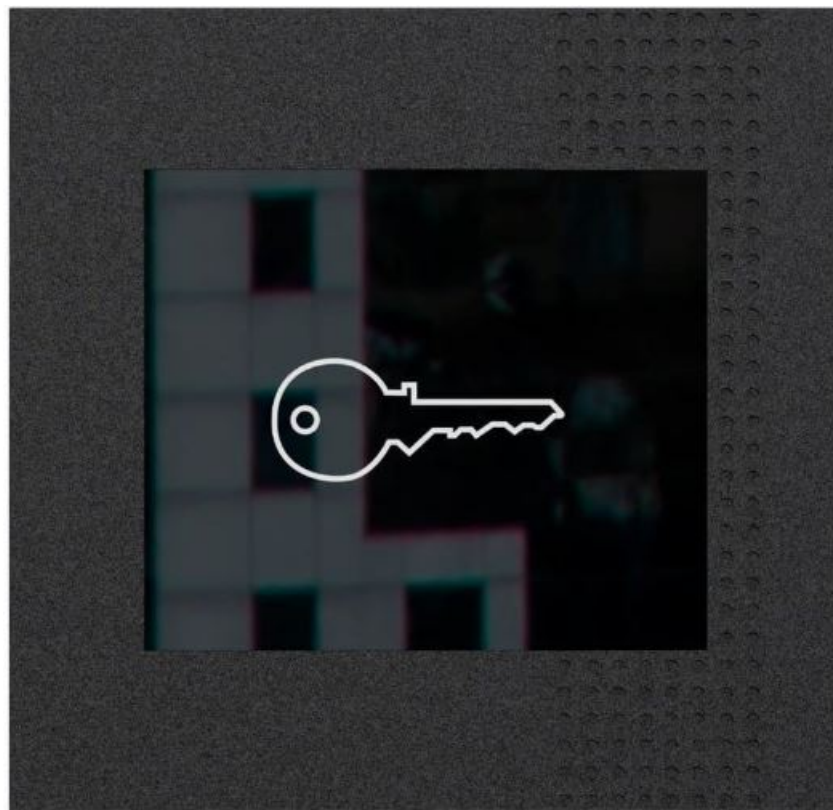
[Home](#) » [intratone](#) » intratone 32-0004 Modular Intercom Label Module Instructions 

Contents

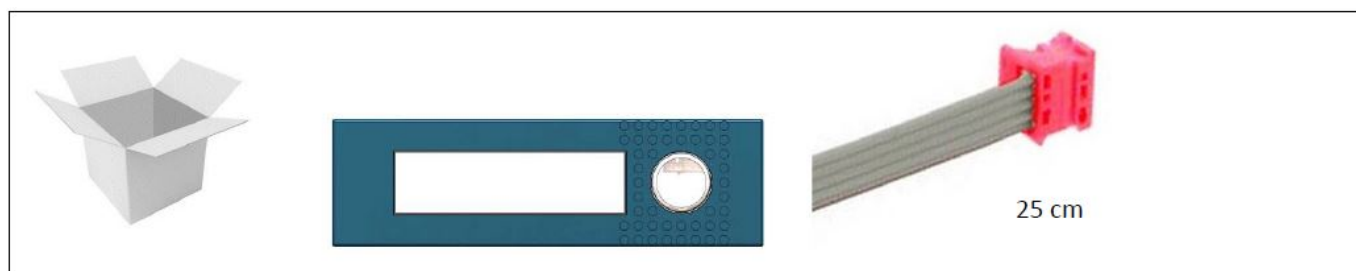
- 1 intratone 32-0004 Modular Intercom Label Module
- 2 WHAT IN THE BOX
- 3 Dimensions
- 4 Wiring than 28 to 220 labels
- 5 Numbering of the buttons
- 6 Warranty operating guarantees
- 7 Documents / Resources
 - 7.1 References



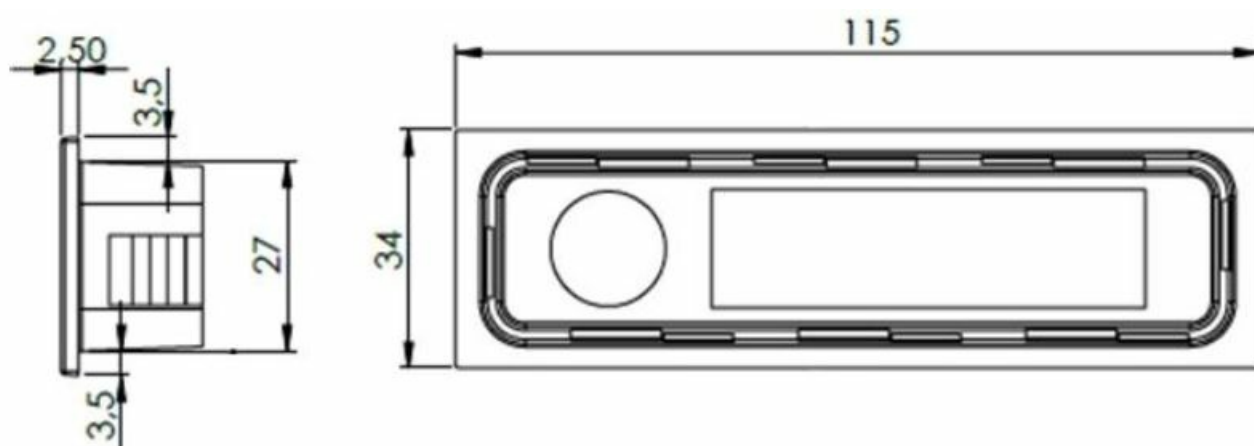
intratone 32-0004 Modular Intercom Label Module

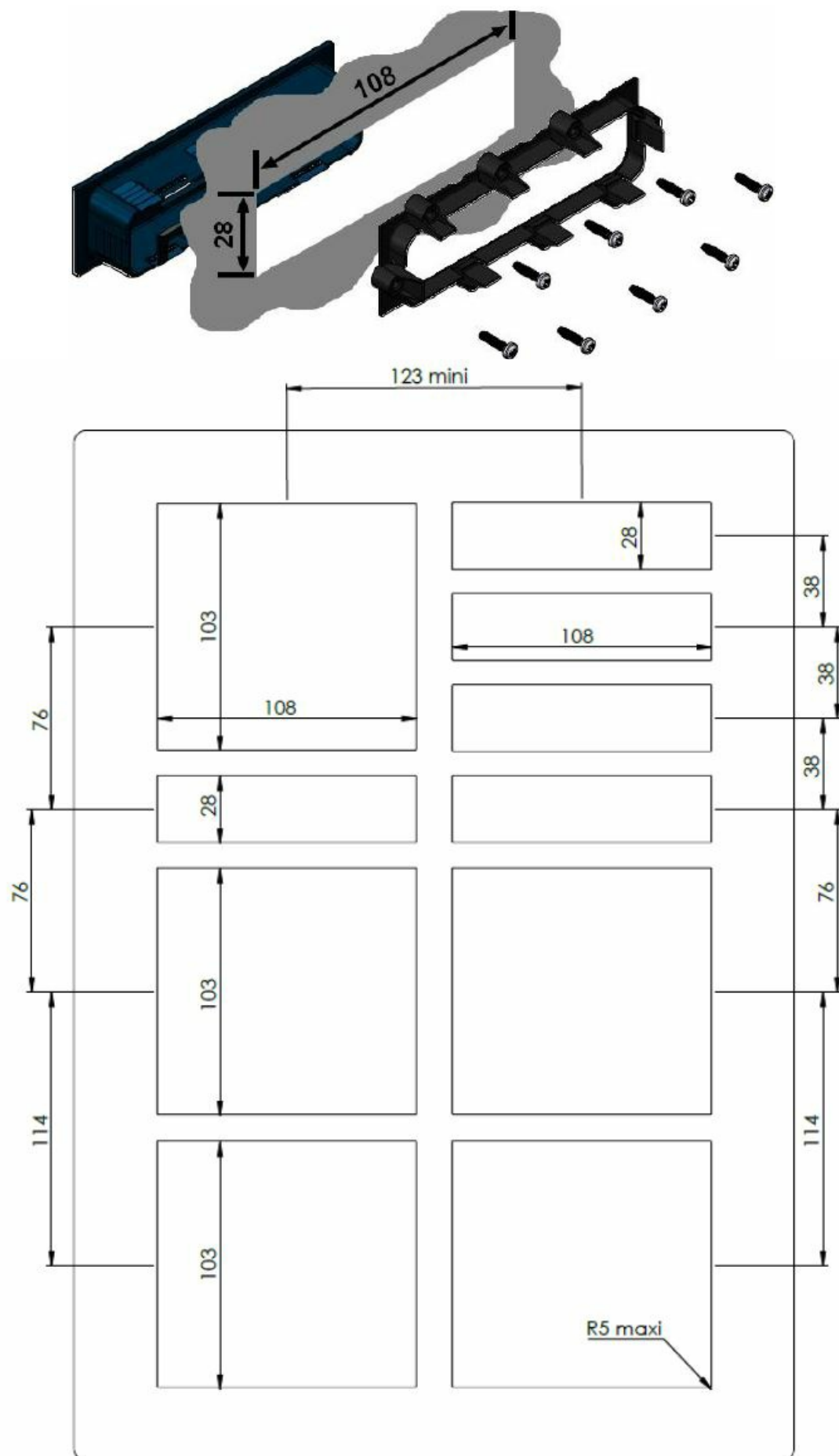


WHAT IN THE BOX



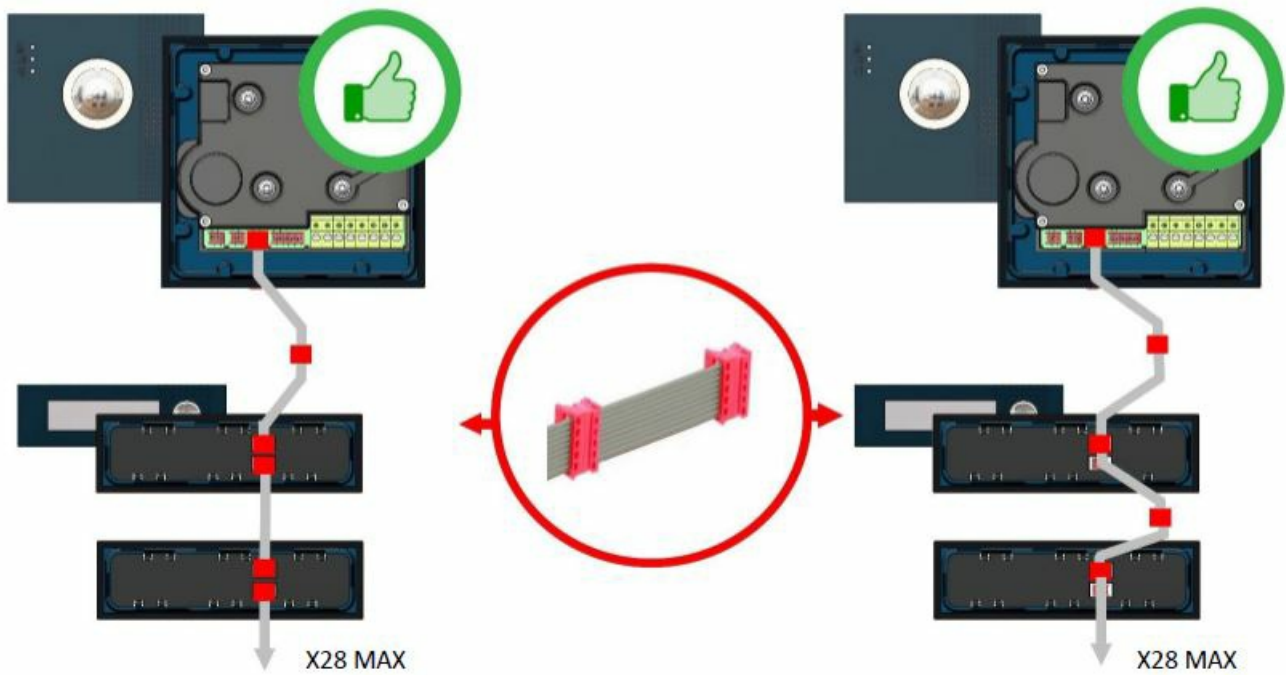
Dimensions



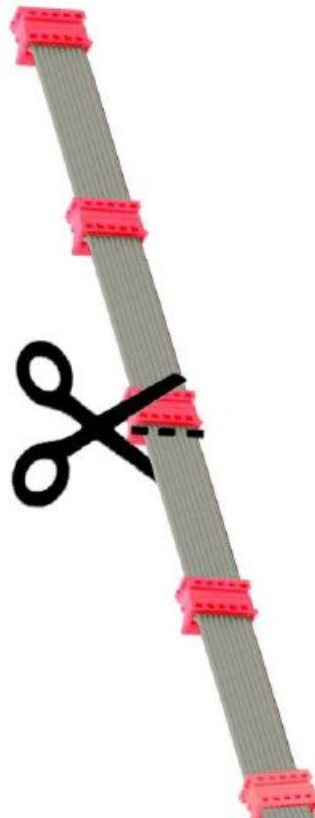


- Support: Thickness 8 mm maximum. Push the rear support in as far as possible, then adjust the tightening with the screws. Check that all notches in the frame are in place.
- Space between two modules (example)

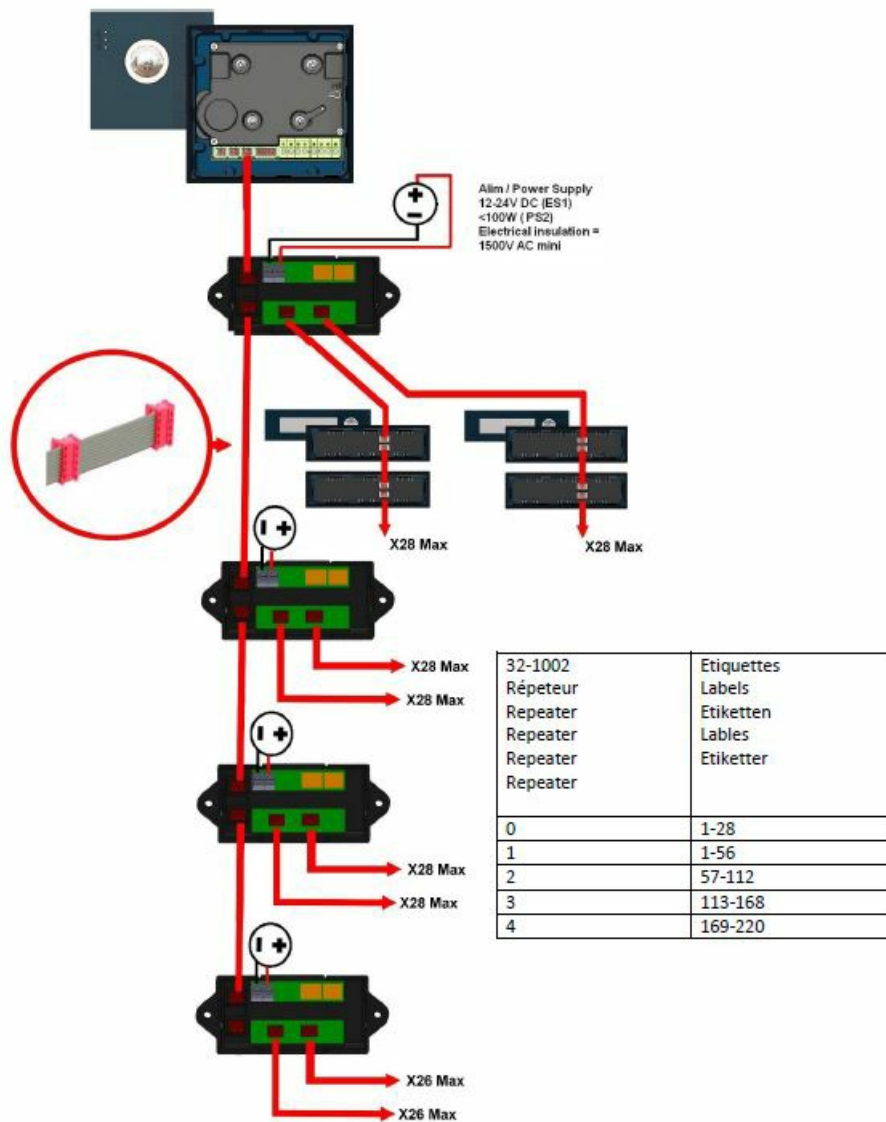
Connection to the camera module (32-0003)



- For lengths over 25 cm, you can use additional cables ref 32-1001. Cut the flat cable to the desired length. It is not necessary to connect all the connectors.



Wiring than 28 to 220 labels



Numbering of the buttons

- We must define the number of each label, this number will be useful in the management site www.intratone.info.
- At the back of the camera module, there is an "Init" button. Press it for X seconds.
- All screens will show "???" . Press the label keys in the desired order from first to last. 30 seconds of inactivity close the configuration.

1

If this is a new installation, please follow the instructions of the camera module 32-0003.

2

If you wish to add a label to an existing installation: Select the desired residence.

3

Go to your access

	Name	connected	Fobs	Events list
	dita		0	View

4

To add or remove labels, choose "Personalize your dita turntable"

Personalise your Dita deck

[Customise](#)

Remember to save your changes.

5

Then configure the labels:

Define the door label(s)

[Setup](#)

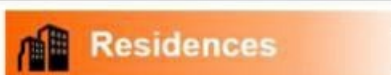
Choose the apartment to connect.

Repeat for all labels



6

Update the residence



[Update](#)

Warranty operating guarantees


- The VIDEO INTERCOM WITH DIGITAL NAME is guaranteed within a temperature range of -20°C and +60°C and at a relative humidity level not exceeding 70%. It must be installed according to the Top/Bottom directions given in these instructions and on the device. The installation must be carried out by qualified personnel with the necessary knowledge for a safe assembly of the equipment.
- This kit includes the necessary elements to ensure a safe installation of the equipment. Finland, Norway, Sweden: Do not install outside because of extreme temperature.

End-of-life recycling of the product



- The VIDEO INTERCOM WITH DIGITAL NAME and its accessories must not be discarded with unsorted municipal waste but must be disposed of via the WEEE (Waste Electrical and Electronic Equipment) collection and recycling system.

Simplified declaration of conformity

-  The undersigned, COGELEC, declares that access control type radio equipment for collective housing complies with Directive 2014/53 / EU (RED). The full text of the EU Declaration of Conformity is available at the following internet address: <http://www.intratone.fr/documentation>. <http://certificates.intratone.com/>. www.intratone.info.
-

Documents / Resources

	<p>intratone 32-0004 Modular Intercom Label Module [pdf] Instructions 32-0004, 32-0004 Modular Intercom Label Module, Modular Intercom Label Module, Intercom Label Module, Label Module, Module, 32-0003</p>
---	---

References

-  [Cogelec :: certifications](#)
-  [Documentations - Intratone](#)
-  [Intratone - Site de gestion](#)
- [User Manual](#)