

Contents [[hide](#)]

- [1 INTRACOM M7153 Wireless Mouse](#)
- [2 Specifications](#)
- [3 Product Using Instruction](#)
- [4 FCC Statement](#)
- [5 Frequently Asked Questions](#)
- [6 Documents / Resources](#)
 - [6.1 References](#)

INTRACOM

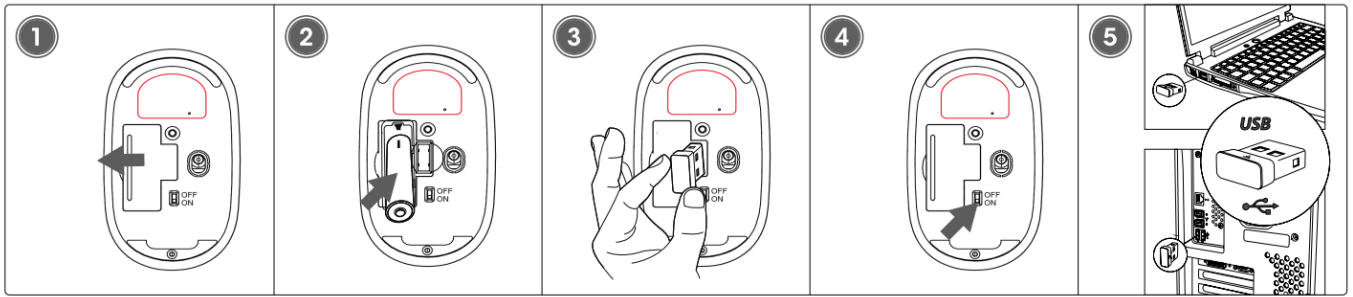
INTRACOM M7153 Wireless Mouse



Specifications

- Model: M7153
- Compliance: Part 15 of the FCC Rules
- RF Exposure Compliance: Yes

Product Using Instruction



1. Open battery cover
2. Remove USB receiver
3. Insert battery.
4. Close battery cover. Turn on the mouse
5. Insert USB receiver into available port on computer.

The computer operating system will automatically detect the device and install the proper driver(s).

NOTE: If the computer doesn't detect the mouse, check the USB connection and the USB compatibility of your operating system (Windows XP/ Vista/7/10/11, macOS, Linux, and Chrome OS).

For specifications, go to manhattanproducts.com.

REGULATORY STATEMENTS

CE/UKCA

The frequency band used for this product is 2402 – 2480 MHz. The maximum emitted transmission power is 5.89 mW E.I.R.P. This device complies with the requirements of CE RED 2014/53/EU (UKCA Radio Equipment Regulations 2017). The Declaration of Conformity for is available at:

support.manhattanproducts.com/barcode/

FCC Statement

Warning:

This device complies with Part 15 of the FCC Rules.? Operation is subject to the following two conditions:

1. this device may not cause harmful interference, and
2. this device must accept any interference received, including interference that may cause undesired operation.

Changes or modifications not expressly approved by the party responsible for compliance could void the user's authority to operate the equipment.

NOTE: This equipment has been tested and found to comply with the limits for a Class B digital device, pursuant to Part 15 of the FCC Rules.? These limits are designed to provide reasonable protection against harmful interference in a residential installation.? This equipment generates, uses and can radiate radio frequency energy and, if not installed and used in accordance with the instructions, may cause harmful interference to radio communications. However, there is no guarantee that interference will not occur in a particular installation. If this equipment does cause harmful interference to radio or television reception which can be determined by turning the equipment off and on, the user is encouraged to try to correct the interference by one or more of the following measures:

- Reorient or relocate the receiving antenna.
- Increase the separation between the equipment and receiver
- Connect the equipment into an outlet on a circuit different from that to which the receiver is connected.
- Consult the dealer or an experienced radio/TV technician for help

NOTE: This device and its antenna(s) must not be co-located or operate in conjunction with any other antenna or transmitter The device has been evaluated to meet general RF exposure requirement.

North & South America

IC Intracom Americas
550 Commerce Blvd.

Oldsmar, FL 34677, USA

Asia & Africa

IC Intracom Asia

4-F, No. 77, Sec. 1, Xintai 5th Rd.

Xizhi Dist., New Taipei City 221, Taiwan

Europe

IC Intracom Europe

Löhbacher Str. 7

D-58553 Halver, Germany

All trademarks and trade names are the property of their respective owners. © IC Intracom. All rights reserved. Manhattan is a trademark of IC Intracom, registered in the U.S. and other countries.

NOTE: If the computer doesn't detect the mouse, check the USB connection and the USB compatibility of your operating system (Windows XP/ Vista/7/10/11, macOS, Linux, and Chrome OS). For specifications, go to manhattanproducts.com.



For additional benefits:

Scan to register your product warranty



or go to: register.manhattanproducts.com/r/180788

Frequently Asked Questions


- **Q: What should I do if the device causes interference?**

- A: If the device causes interference, try repositioning it or moving it away from other electronic devices. If the issue persists, contact customer support for further assistance.

- **Q: How can I ensure compliance with RF exposure requirements?**

- A: To ensure compliance with RF exposure requirements, avoid prolonged close contact with the device and follow any usage guidelines provided in the user manual.

Documents / Resources

	INTRACOM M7153 Wireless Mouse [pdf] Instructions M7153, M7153 Wireless Mouse, Wireless Mouse, Mouse
---	--

References

- [🌐 Manhattan Products: HDMI Adapters, Cables, TV Mounts, Barcode Scanners](#)
- [🇩🇪 Produktgarantie – Manhattan Deutschland](#)
- [🇩🇪 Manhattan Products Account and Product Registration](#)
- [User Manual](#)

💎 INTRACOM, M7153, M7153 Wireless Mouse, mouse, Wireless

📁 INTRACOM Mouse

—Previous Post

[INTRACOM K2213BW Wireless Keyboard Instructions](#)

Leave a comment

Your email address will not be published. Required fields are marked *

Comment *

Name

Email

Website

☐ Save my name, email, and website in this browser for the next time I comment.

Post Comment

Search:

e.g. whirlpool wrf535swhz

Search

[Manuals+](#) | [Upload](#) | [Deep Search](#) | [Privacy Policy](#) | [@manuals.plus](#) | [YouTube](#)

This website is an independent publication and is neither affiliated with nor endorsed by any of the trademark owners. The "Bluetooth®" word mark and logos are registered trademarks owned by Bluetooth SIG, Inc. The "Wi-Fi®" word mark and logos are registered trademarks owned by the Wi-Fi Alliance. Any use of these marks on this website does not imply any affiliation with or endorsement.