

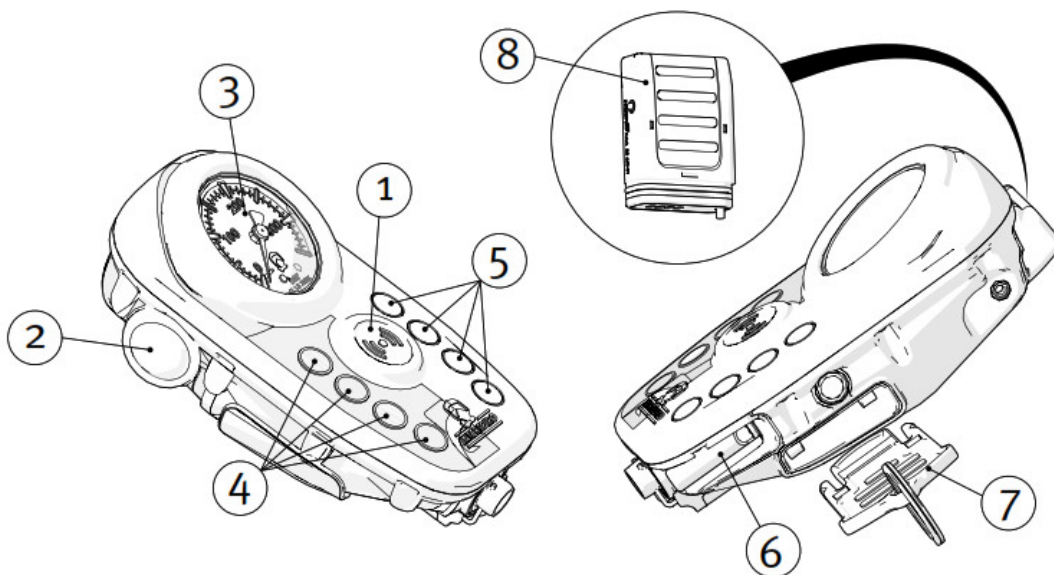


INTERSPIRO Personal Alarm Control Unit User Manual

[Home](#) » [INTERSPIRO](#) » INTERSPIRO Personal Alarm Control Unit User Manual 



PAC – Personal Alarm Control unit User manual



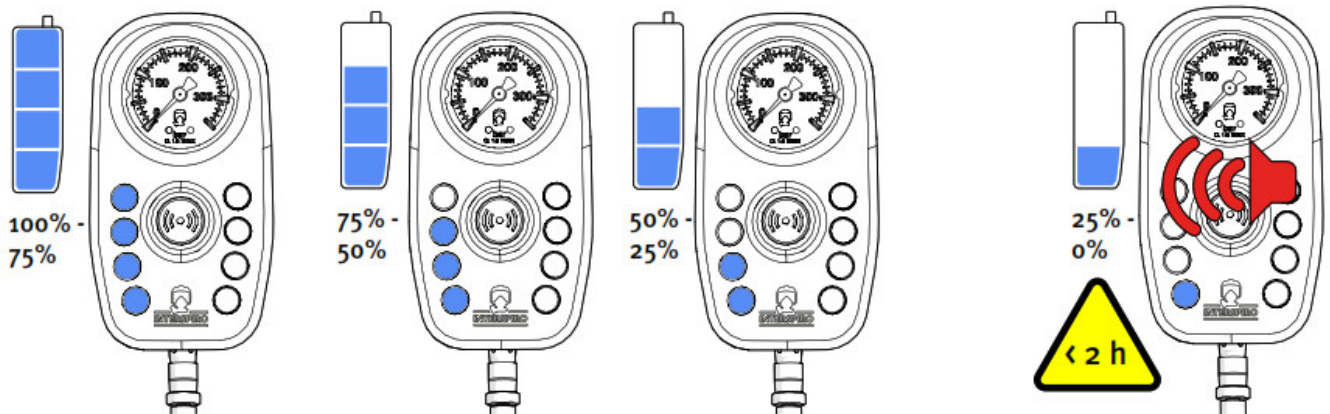
1. Alarm button
2. Mode button

3. Pressure gauge that is after glowing and illuminated by LED light
4. LED lights left side
5. LED lights right side
6. Whistle (alarm for low pressure)
7. Tally key (optional)
8. Battery pack

Contents

- [1 Battery](#)
- [2 Battery replace](#)
- [3 Battery replacement](#)
- [4 Assembly instruction](#)
- [5 Cylinder pressure](#)
- [6 Turn the unit off](#)
- [7 Pressure gauge backlight](#)
- [8 Cleaning](#)
- [9 Motion alarm](#)
- [10 Approvals](#)
- [11 Safety notice](#)
- [12 Documents / Resources](#)
- [13 Related Posts](#)

Battery





The battery status can only be checked when the unit is off. When the PAC is on it will make an alarm when the battery level drops below 2 hours of usage.

When the battery warning has been activated, the PAC can not be started before the battery pack has been replaced.

Battery replace

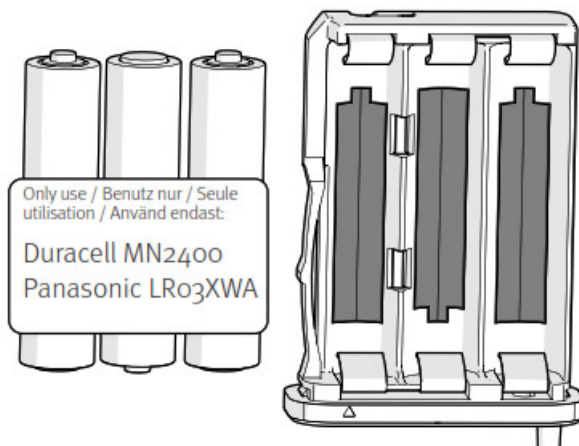
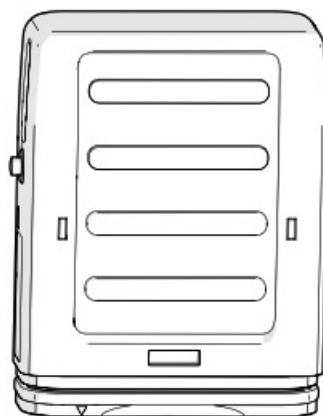
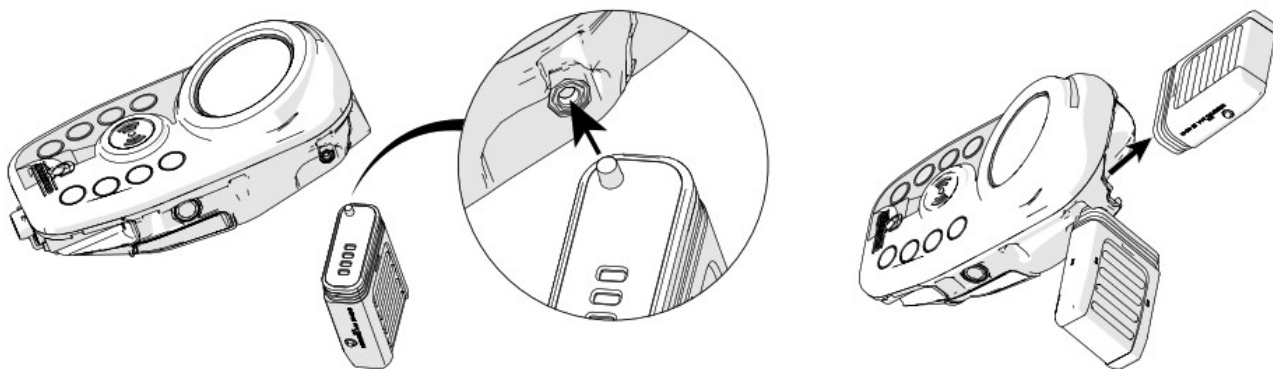
The PAC is powered by a battery pack that includes three AAA batteries. Use the pin on the new battery pack (or a similar pointy object) to push in the pin on the installed battery pack. Pull out the old battery pack. Open the battery pack and replace the batteries.

WARNING! Batteries must only be changed in an area known to be nonhazardous. Do not mix battery manufacturers or old with new batteries. Interspiro assumes no liability for mechanical, electrical or any other type of battery failure. Cold conditions during storage and use will decrease battery life.

Battery replacement

The PAC is powered by a battery pack that includes three AAA batteries. Use the pin on the new battery pack (or a similar pointy object) to push in the pin on the installed battery pack. Pull out the old battery pack. Open the battery pack and replace the batteries.

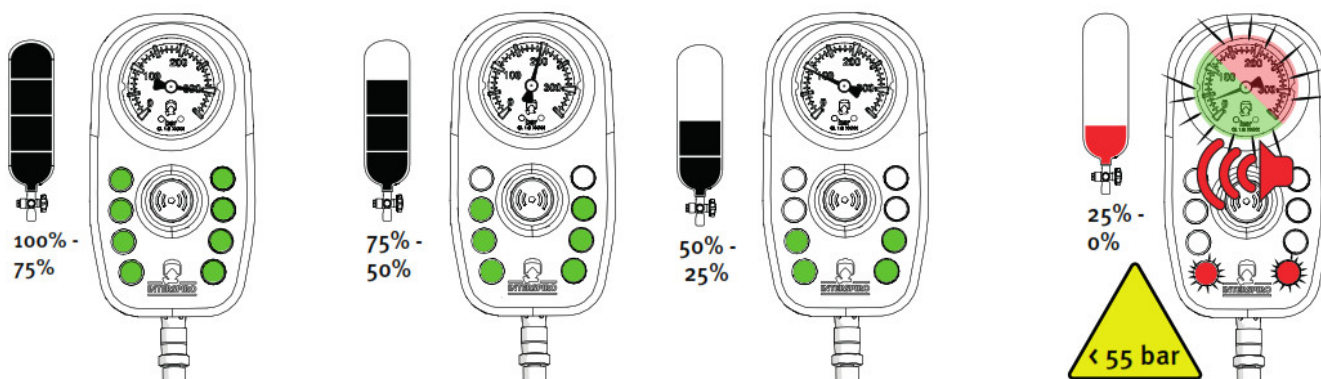
WARNING! Batteries must only be changed in an area known to be nonhazardous. Do not mix battery manufacturers or old with new batteries. Interspiro assumes no liability for mechanical, electrical or any other type of battery failure. Cold conditions during storage and use will decrease battery life.



Assembly instruction

Follow the assembly instruction 55187 to assemble the PAC on the SCBA. Warning! The installation may only be performed by a service technician certified by Interspiro

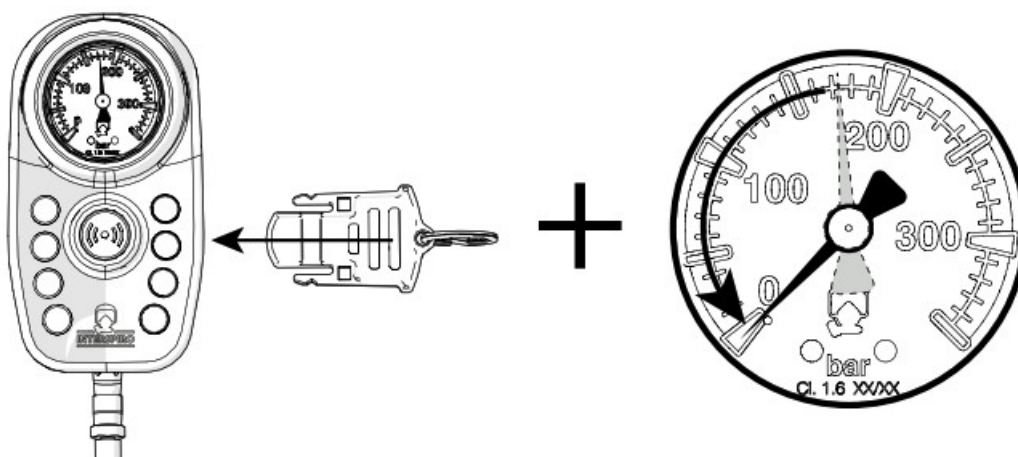
Cylinder pressure



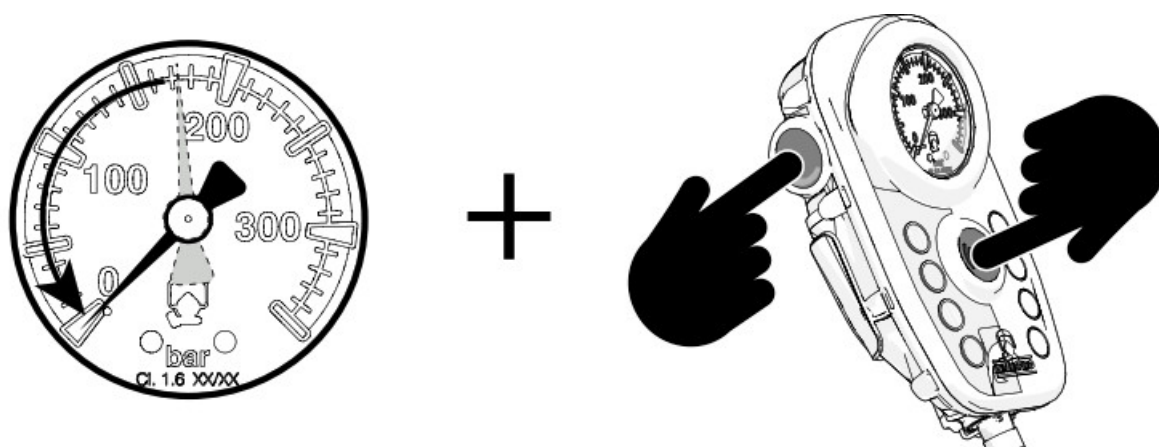
Turn the unit off

With Tally key

Insert the Tally key and depressurize the SCBA.



Depressurize the SCBA to 0 bar and then press the mode button and alarm button at the same time.

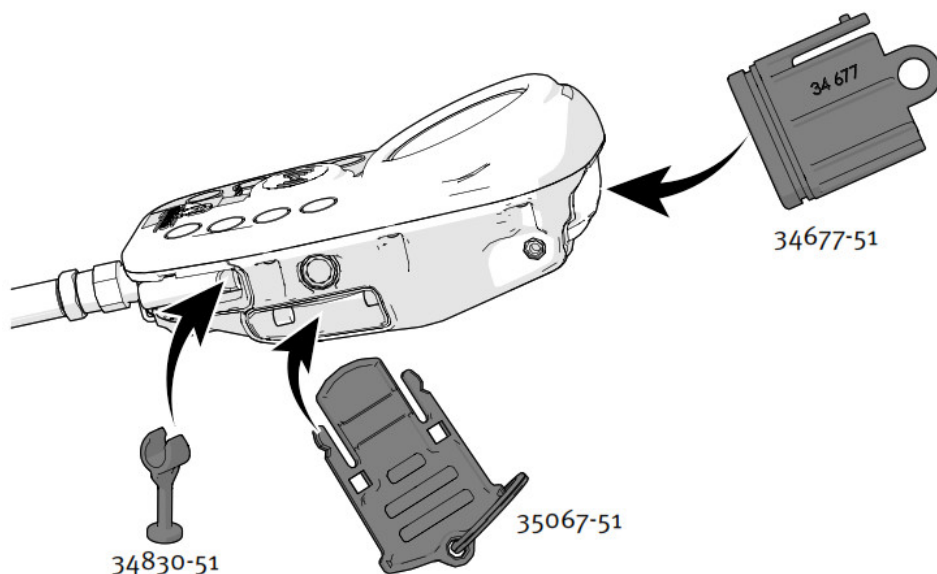


Pressure gauge backlight



Cleaning

The PAC can be cleaned together with the SCBA according to the washing instructions for the SCBA. Remove the battery pack. Insert the Tally key and the washing plug for battery and whistle. Clean the PAC in a washing machine or by hand at a maximum 55 °C. After cleaning: Remove the washing plugs and the Tally key and dry the PAC together with the SCBA. Clean the battery pack with a cloth.



Motion alarm

Pressure started version: The unit is activated when it is pressurized. Version with Tally key: The unit is activated when the Tally key is removed. If the Tally key is inserted the motion alarm is deactivated. Both versions: If no movement is detected during 20 seconds, the pre-alert activates with a beeping sound once per second. Move the unit to deactivate the pre-alert. If the pre-alert is not deactivated within 10 seconds, the full alarm will start with the LEDs flashing and a high pitch alarm sound. When the unit is activated, the full alarm can be started at any time by pressing the alarm button. To shut off the full alarm: Pressure started version: Press the mode button and

the alarm button at the same time.
Version with Tally key: Insert the Tally key and then remove it again.

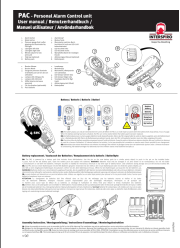
Approvals

PAC is certified as a component of the CE marked Incurve and QSII SCBA according to Regulation (EU) 2016/425 on Personal Protective Equipment.

Safety notice

The product must only be used with other approved Interspiro products. The apparatus must be maintained, serviced, and tested as described in this user manual, Interspiro service manuals, and Interspiro test instructions. Interspiro is not responsible for combinations of products unless put to market by Interspiro or changes or adaptations made to the product by a third party. Changes to this document – necessitated by typographical errors, inaccuracies of current information or improvements, and changes of equipment – may be made at any time without prior notice. Exposure to extreme conditions may require different procedures rather than those described in this manual. The guarantees and warranties specified in the conditions of sale are not extended by this Safety notice. To maintain the functionality and properties of the PAC unit during the entire expected lifetime, only use cleaning agents; BA Decon, Rescuclean P1, or Rescuclean P2. Do not use alcohol or other organic solvents.

Documents / Resources

	<p>INTERSPIRO Personal Alarm Control Unit [pdf] User Manual 55185D91, Personal Alarm Control Unit, Alarm Control Unit</p>
--	--